



# Reporter

News and Views from around the area

Volume 1 Issue 7

September 2009

[www.milbornestandrew.org.uk/reporter](http://www.milbornestandrew.org.uk/reporter)

Milborne St. Andrew

## Welcome to . . .

. . . The Fox family, Andy, Sarah, Lily and Ronnie from the Royal Oak



. . . Anne Purdy, the new Headteacher at Milborne St. Andrew First School



. . . Seven babies born this year in the village see page 12

Win £50 see page 7

Caron Redding and

## VOYAGER TAXI

Would like to welcome  
Andy, Sarah, Lily and Ronnie Fox  
to the Royal Oak  
and  
wish them all success in their new venture.  
Voyager Taxi – call 07833 170824

## Milborne St. Andrew Wednesday Social Club

Coach outing to see HMS PINAFORE at POOLE LIGHTHOUSE  
THURSDAY MATINEE, 29th October, 2009  
BOURNEMOUTH Gilbert and Sullivan Operatic Society are  
presenting HMS Pinafore. The Wednesday Club have reserved a  
number of seats for the 2.30 pm performance all are welcome.

Cost: £11 per ticket. Coach: £6.00 for Members. £7.00 for non-Members.

Departure times to be confirmed when booking. For further  
details, please contact Margaret Evans Tel: 01258 450518.

The Village Lunch Committee is pleased to invite you to a

## HARVEST LUNCH

To be held at the Village Hall on  
SUNDAY 27th SEPTEMBER at 12.30pm  
Roast Dinner : Pudding : Tea/Coffee : Mints  
£5.00 per head (children £2.50)

BOOKING ESSENTIAL!

Tickets available from the Drop-In Centre at the  
Village Hall from Friday 4th September  
Margaret Kirk 837749 or Melva Coe 837453

The views expressed in this magazine are not necessarily  
those of the *Reporter* team.

### Advertise with the Milborne St Andrew *Reporter*

Distributed to over 500 homes 11 times each year

Full page £150.00 p.a / £20.00 per issue

Half page £100.00 p.a. / £15.00 per issue

Quarter page £60.00 p.a. / £8.00 per issue

Eighth page £40.00 p.a. / £5.00 per issue

Back page £200.00 per annum

Community events at the Village Hall will be advertised free of charge  
Other community events at half the above rates

Advertising copy **MUST** be received by the 14th of this month

reporter.ads@milbornestandrew.org.uk

Advertisers will also be listed in the Business Directory at  
www.milbornestandrew.org.uk

# Michael Howells

(Plastering Contractor)

## PLASTERING ON REPUTATION

- Family Business with Excellent References
- All Aspects of Plastering Undertaken
- New Builds to Renovations
- Specialists in Traditional Lime Mortars

**Tel: 01258 839231**  
**Mob: 07876 140466**

20, St Andrews View  
Milborne St. Andrew  
DT11 0GA

## Two new members for the *Reporter* team

WHEN we first decided to become involved with keeping some sort of publication in the village, a team was assembled, only four of us to start, but quickly others joined us. Recently we have said goodbye to Debbie Bennion and Margo Kirk (who did all the hard work to get new advertisers, and was the point of contact for advertising queries). Needless to say we are very appreciative of all their hard work.

We are really pleased to announce that Sue Marsh and Ed Richards have decided to join us. They bring different talents, which is excellent. Sue runs the Friendly Art Group which meets twice a month, she enjoys walking and yoga/pilates, whilst Ed writes the regular "doggy" column and was kind enough to stand in on our team in the Village Quiz, an evening of giggles, wine, and appalling scores on our team – we have great fun!

Thank you to you both for deciding to get involved.

### Your *Reporter* Team

Ed Frost, Sue Gould, Heather V. Hogg,  
Kelvin Kinkaid, Sue Marsh, David Payne,  
Marion Regan and Ed Richards

Advertising and General Enquiries: Ed Frost 01258 837921  
News and Features: Sue Gould 01258 837575  
Finance and Photography: Heather V. Hogg 01258 837392

Copy for the next issue **MUST** be received by the 21st of this month

Enquiries and copy to: reporter@milbornestandrew.org.uk  
E-copy as .doc or .pub files, pictures as .jpg or .pdf files please  
Paper copy to Sue Gould at 28 Stileham Bank DT11 0LE

## Ladybirds – End of another school year

THIS year has been an active year at Ladybirds for children and adults. During the last term we have grown flowers, beans and strawberries outside the Hall. Of course we made sure they were watered well – and everything else. We cooked the beans, measured our sunflowers, watched the bees and ladybirds and ate strawberries. For our summer outing we spent a lovely hot day at the Sealife Centre in Weymouth. Liz got soaked on the crocodile ride as the child sitting in front of her ducked at the moment they splashed down. Then all got wet again in the water play area.

On our last day we held a party inviting along mums and dads and younger children. The weather was good enabling us to take part



in sports activities on the field. We had a bouncy castle and played games, made butterflies and had party food. The presentations were made to all the adults who put in so much effort to make us successful. Thank you.

We would like to say a sad farewell to all those going on to school – 15 this year – and wish them all the best on the next stage of their education. This means we will start back in September with a low number of children, so if your child is age 2 years 6 months come along and see us or phone Ruth on 07905 358299 or Liz on 01258 839117. School term begins on 7th September.

*Liz Dyer*

## Milborne Friendly Art Group



The Art Group enjoyed a social get together for a BBQ in our organiser's garden on the 25th July. The weather was kind to us for a change and although it got a bit chilly as the evening went on Sue had plenty of coats for us to borrow. (hope she got them all back)! The food was great and it made a nice change for us all to chat without feeling guilty for not getting on with our painting. Many thanks again to Sue for all her hard work in keeping the Group focused during the year and

for the use of her lovely garden for the BBQ.

The Members of MSA Friendly Art Group had an interesting evening on 22nd July with visiting Artist Audrey Young. She encouraged us to try our hand at drawing or painting people in different poses but keeping



them in proportion at the same time, not an easy task! It was good to tackle something new and we are looking forward to another visiting Artist, Jenny Trotman coming to give us a demo/workshop on 21st October, this will be on using Indian Ink in pictures. If any non-members would be interested in joining us for this demo or just to come along to our twice monthly meetings, further details can be obtained from Sue Marsh on 837414.

*Elaine Anthony*



## Milborne Ladybirds Playgroup

registered charity no. 1087441

We are a friendly community based pre-school, offering a safe, fun, learning environment. We have a band of enthusiastic staff who help your children to learn through play, allowing children to enjoy achieving their potential.

"...children are helped to feel secure by 'friendly and caring' staff."

Ofsted report 2007

Opening times:

Early birds 8:45 to 9:15, Session 9:15 to 11:45, Lunch Club 11:45 to 12:45



Contact Details: Ruth Evans 07905358299  
info@milborneladybirds.org.uk www.milborneladybirds.org.uk



**THE BENEFICE OF PUDDLETOWN, TOLPUDDLE AND MILBORNE WITH DEWLISH  
PART OF THE CHURCH OF ENGLAND IN THE DIOCESE OF SALISBURY**

## Celebration of Ministry

Dear Friends

If I asked you how many church ministers there are in our Benefice, I wonder what you would say? – 5 maybe, 10 possibly, 15 . . . never!

But when the Bible talks about the ministry of the church, it always talks about the ministry of all believers – not just the ones in dog collars!

1 Corinthians 12 describes the church as the Body of Christ of which all members are a part, each has their role to play, all are valuable and all minister to *that Body*. The Apostle Peter, in one of his letters talks about us as “a Royal Priesthood” and he is talking about everyone in the church, not just a few!

So in fact, according to our membership lists, there are over 200 church ministers in the Church of England in our Benefice!

Having said that of course, the Church has always recognised the need to train and set aside people, called by God, for particular tasks in his church, particularly in leadership and pastoral care.

And in this respect we have much to celebrate in our Benefice at this time . . .

Firstly, during this year, a group of 15 people from the Benefice have been training to be *Lay Pastoral Assistants (LPA's)*. Just before the summer holidays they completed their training and were formally commissioned by the Archdeacon. They will be ministering in a variety of ways around the parishes starting this Autumn. *In Milborne and Dewlish, our LPA's are Eva Stockley, Eric and Janet Austen, and Sue Britton and I hope that, as they begin their ministry as LPA's among us you will welcome and support them wholeheartedly.*

Secondly, we have been very blessed to have *Rev Sarah Godfrey* with us over the last four years as she completed her ordination training. Sarah came to us as a newly ordained deacon in 2005, and has been a Curate in Training with us over the last 4 years. Now, however, her formal training is over, and I am delighted to say that she will be staying with us as Associate Priest in the Benefice! As many of you will know, Sarah gives her time freely and receives no remuneration for her hard work apart from some expenses.

So on Saturday 10th October, Sarah will be receiving her new *Licence from the Bishop at Salisbury Cathedral as Associate Priest* in our Benefice, and the next day we will be having a *Service of Thanksgiving and Celebration* with her here in *Milborne at 6pm I know that many people have been blessed by Sarah's ministry* among us and I do warmly invite you to come and join the festivities that evening.

But in all these celebrations, we must not forget that we are all called to minister in the Body of Christ. Furthermore, God could be calling you to a *particular ministry in His church, so as we celebrate our new LPA's and our new Associate Priest*, let us also be open to what God might have in store for each of us!  
Yours in Christ

## CHURCH SERVICES – September 2009

THURSDAY 3rd September  
12.00 Lunch-time Communion Milborne

6th SEPTEMBER – Trinity 13  
9.30am Harvest Celebration! Tolpuddle  
*Please bring non-perishable goods to donate to Dorchester Women's Refuge*

9.30 Family Communion Milborne  
11.00 Holy Communion Puddletown  
*With Sunday Seekers and Creche*  
11am 1662 Morning Prayer Dewlish

THURSDAY 10th SEPTEMBER  
12.00 Lunch-time Communion Puddletown

13th SEPTEMBER – Trinity 14  
8.15am 1662 said Communion Service Puddletown  
9.30 1662 Morning Prayer Tolpuddle  
9.30 Parish Communion Milborne  
11.00 Family Service Puddletown  
11.00 Family Communion Dewlish

THURSDAY 17th SEPTEMBER  
12.00 Lunch-time Communion Dewlish

20th SEPTEMBER – Trinity 15  
9.30am Family Communion Tolpuddle  
9.30 1662 Said Communion Milborne  
11.00 1662 Morning Prayer Puddletown  
11.00 Holy Communion Dewlish  
4.00pm Milborne Praise! Milborne Village Hall

THURSDAY 24th SEPTEMBER  
12.00 Lunch-time Communion Tolpuddle

27th SEPTEMBER – Trinity 16  
9:30am Holy Communion Tolpuddle  
9:30 Milborne Harvest Festival! Milborne  
*Please bring Harvest produce which will be distributed around the village*  
11.00 Family Service Dewlish  
11.00 Harvest Festival! Puddletown  
*Followed by Bring and Share Lunch!*

Church Cleaning – w/e Saturday  
5th Sept Ed and Rose Frost  
12th Sept Sue Lee and Val Hodges  
19th Sept Mary Bennett and Pat Tribe  
26th Sept Sue Lucas and Carolyn Martin  
Flowers  
Sept 5th and 12th Eve Richardson  
Sept 19th Pat Tribe  
Sept 26th (HARVEST) All please

## MILBORNE ST. ANDREW CHURCH NOTES

Keeping the service(s) going

THE Summer holiday has passed very quickly but at least it has given everyone who works so hard for St. Andrew's Church time to relax and renew our strength after a very busy year.

We have managed to have some form of service at our church each Sunday during August. The first Sunday we welcomed Patrick Evans to conduct Family Communion and, although we each did something towards the service, it was just amazing how everything came together – the readings and hymns all had a special link almost

as if we had sat down and planned it together! The saying, “God works in mysterious ways” certainly seemed to come true on this day.

Sarah took the service on 16th August, which was a Family Service with a difference. The children took part in the readings and prayers. We experienced floating flowers with our own inscriptions on while we sang hymns.

Our two Complines during August were taken by Pat and Eva. These are very simple, quiet services consisting of readings and

prayers with two hymns. As we write, plans are going ahead for Sunday, 30th August, when we will be holding a Farm Service at Coles Farm by kind permission of June and Alan Maitland. This is a benefice service to which congregations from Puddletown, Tolpuddle and Dewlish are invited to join us.

We hope all those who attended our holiday programme of services thoroughly enjoyed them.

The Milton Abbas Georgian Street Fair proved to be very successful; the weather was perfect and we raised £320 for church funds. We hope that the Five Churches Fete to be held at Athelhampton House on August Bank Holiday Monday (12 noon – 3pm) will also be a successful event for the benefice. This is a very **difficult time to be trying to raise money of course. St. Andrew's** share will be used mainly for the upkeep of the church at a time when we hope to improve facilities within the church itself. Needless to say, this will require a great amount of fund-raising too.

*Eva Stockley*

Join the brambles offensive!

**IS there anyone willing to help with two major jobs in St. Andrew's churchyard?** Brambles on the field side of the churchyard are smothering two small trees and need cutting back (bring your own secateurs and gloves please). The compost heap at the back of the churchyard needs digging out and re-making (bring your own fork and spade/shovel and a sack if you would like some free compost – there should be some good stuff at the bottom!).

The proposed date for these jobs is Saturday, 3rd October, from 10am onwards, weather permitting. Home-made cake and tea, coffee or squash will be provided for all helpers. Please let Pat Tribe (Tel: 837684) know if you are able to help.

Historic Churches Trust Sponsored Cycle Ride

A reminder that this takes place on Saturday, 12th September, between 10am and 6pm. It is not too late to take part! Anyone interested can obtain full details and forms from Dave Payne (Tel: 837700) or me ('phone number as above).

*Pat Tribe*

## A Dewlish date for your diary

A special coffee morning with stalls and a raffle will be held at Parsonage Farm, Dewlish, the home of Sue Britton, on Thursday, 17th September. All proceeds will be devoted to church funds.

*Daphne Burg*

## Church Contacts

Vicar	Benny Hazlehurst	01305 848216
	Sarah Godfrey	01258 839067
Milborne St. Andrew	Church Wardens	
	Eva Stockley	01258 837468
	Pat Tribe	01258 837684
Dewlish	Jim Burg	01258 837466
	Sue Britton	01258 837218

[www.milbornestandrewChurch.org.uk](http://www.milbornestandrewChurch.org.uk)

## Roger's Rant

Dear Friends

All the money is in and the bills paid!

We have made a profit of £262.35 which has been split equally between the Dorset & Somerset Air Ambulance, The Royal Life Boat Institute and next year's Rant.

Thank you again for all those who helped and to those who came and gave generously.

Regards

Roger & Alice

PS next year's Rant will be on 2nd to 4th July 2010

## 'A picture opportunity'

IT'S said that 'a picture is worth a thousand words' and if that is the case then Jane Ferentzi-Shepherd's talk to WI members in July about old photographs spoke volumes. Jane inherited a box of old photos about 25 years ago. Because she didn't know who many of the people in them were, or even in some cases the places shown, she was encouraged to research her own family history with a view to identifying some of those faces and places. She showed us examples of early photos – wedding and family groups, studio photos, postcards, school line-ups, etc. All contained clues to dating, e.g. hairstyles, fashions, even family groups without the husbands (maybe they were away at war). Certainly many of us have our own collections and Jane spent some time looking at a sample of those we had brought along and talked us through the things to look for. All in all, a really fascinating insight into social history.



Take a look at this picture of some of our members enjoying a day out at Royal Ascot – it's not hard to date this one!

After the summer break we look forward to catching up at our meeting on Thursday 10th September, when Mrs A Williams will talk about 'Ribbons, Roses and Flowers'. If you haven't been to one of our meetings before, why not give us a try and come along. You will be very welcome.

*Pat Bull*

**TOLPUDDLE TWITTERERS PRESENT**  
**FOR ONE NIGHT ONLY!!**

**AN EXTREMELY RARE APPEARANCE OF**  
**“6 NIGHTINGALES AND A LARK”**

**SATURDAY 10<sup>TH</sup> OCTOBER 2009**  
**ST JOHN'S CHURCH, TOLPUDDLE**  
**STARTING AT 7.30p.m.**

**PERFORMING A CHOICE SELECTION OF SONGS**  
**FROM CLASSICAL THROUGH TO POP,**  
**WITH MUSICAL DIRECTOR LINDA BROWN**

**IN AID OF ST JOHN'S CHURCH AND**  
**TOLPUDDLE OPEN SPACE**

**TICKETS £6, TO INCLUDE A GLASS OF WINE &**  
**CANAPES (CHILDREN UNDER 12 FREE) AVAILABLE**  
**FROM**  
**MARION BISHOP 848427, SUE CHAPMAN 848053**  
**JULIE LEWIS 07866678358, NICKI BRUNT 848383**



- LOCAL OR DISTANCE
- DOCKS AND AIRPORT TRANSFERS
- DAYTIME ~ EVENINGS
- WEEKENDS ~ BANK HOLIDAYS

SPACIOUS VEHICLE SEATS UP TO  
6 PASSENGERS IN COMFORT

PHONE OR TEXT:  
CARON REDDING 07833 170824

EMAIL:  
caron\_redding@hotmail.co.uk  
caronredding@mobileemail.vodafone.net

## ABBEY SWIMMING CLUB

The Club is based at Milton Abbey School,  
Milton Abbas, which has a  
25 metre indoor swimming pool.

Membership is open to anyone. Members range in age from less than a year to over 80. This is a social and friendly club. Join us and keep fit.

The pool is hired for 4 sessions a week. Lifeguards supervise all sessions. RLSS National Lifeguard and Bronze Medallion courses are available as well as swimming lessons for adults and children.

### Annual Membership

Adults £80. Senior Citizens £60. Juniors (17 and under) £28 as part of a family, £45 individual.  
Children (3 and under as part of a family) free.

### Club Sessions

Tuesdays: 7.00 pm – 9.00 pm  
Fridays: 7.30 pm – 8.30 pm  
Saturdays: 10.00 am – 12.00 noon  
Sundays: 8.00 am – 9.00 am

Come to the pool during any club session for a free swim and pick up an Application Form or contact Robert (01258 880192) or Pat (01258 880601).



## HEALTHY PETS LTD

Come and see us for full dietary advice  
plus friendly service  
Full range of foods, treats and toys  
for your faithful friends  
Specialist in wild bird food

DELIVERIES TO YOUR  
AREA EVERY FORTNIGHT

website - [www.healthypetsblandfordltd.co.uk](http://www.healthypetsblandfordltd.co.uk)

Unit One, Milldown Business Centre  
Shaftesbury Lane, Blandford, DT11 7TD

e-mail - [dave.healthypets@btconnect.com](mailto:dave.healthypets@btconnect.com)

**Tel: 01258 459066**

**Southfield**  **xl** **vets**  
VETERINARY CENTRE A MEMBER OF XLVETS UK LTD

South Walks, Dorchester, Dorset, DT1 1DU  
Telephone: 01305 262913  
[info@southfieldvet.co.uk](mailto:info@southfieldvet.co.uk)

*"The practice that always provides first class care for  
your animal companions – large and small"*



Morning, afternoon and evening appointments  
Well equipped modern facilities  
Very experienced dedicated small and large animal vets

We also offer appointments in the following specialist areas:-  
Problem skin conditions • Acupuncture  
Homeopathy • Behavioural problems

With the cost of living escalating, our clients can also benefit from membership of our Southfield Pet Health Plan which spreads the payments and reduces the cost of their pet care with convenient monthly direct debit payments and gives discounts on additional services.

[www.southfieldvet.co.uk](http://www.southfieldvet.co.uk)

**24 HOUR EMERGENCY SERVICE**

# Royal Oak re-opens – “We’re in it for the long haul”

Ed Richards reports

THE doors of the rejuvenated Royal Oak pub will be thrown open to the public by new landlords Andy and Sarah Fox on Friday 4th September at 5.00pm.

**The building has undergone an overhaul and the couple’s vision for a community-focused pub, serving good food, within an informal ambience looks set to ensure the Royal Oak’s future.**

This follows a highly-publicised saga with former owners Hall & Woodhouse. The Blandford brewery removed the Royal Oak from the market just hours before the Fox’s were due to sign on the dotted line, causing outrage amongst Milborne residents.

Only weeks following this, Mr and Mrs Fox are now the licencees with a ‘tenancy-protected’ lease. This means, Andy Fox says, “that we can stay as long as we want to stay. They can’t throw us out – ever”.

The couple says that relations are “fine” with Hall & Woodhouse now – following the initial setback, Andy and Sarah have respect for the brewery in the way that they have compromised with them. Hall & Woodhouse have invested money in the redevelopments, yet the Fox’s retain control over the pub’s destiny. Their only tie is to have three Badger ales, “everything else is free trade”, Sarah says, “that gives us the chance to have autonomy to do what we want to here”.

Matt Kearsey, Tenanted Director of the brewery is “delighted that Andy and Sarah have become the new landlords – I know they have exciting plans for the business”.

These plans include returning the pub to its original layout by re-installing the doorway that links the Sports bar with the main bar. Previously, drinkers would have had to venture onto the main road to get from one bar to the other. They hope to turn the pub ‘around’ completely, with the main entrances being from the car park and garden, although the door on Dorchester Hill would still remain. The restaurant area – segregated from the other bars – will also cease to be. As Sarah says, “we don’t want it to be stuffy like that”, diners can sit anywhere to eat.

Following this theme of informality, they aim to serve unpretentious, “good pub grub” with locally-produced foods being used as much as possible. Good coffee and tea and homemade cake will also be available throughout the day, which the Fox’s hope will bring in customers that Milborne hitherto hasn’t provided for.

The menu will include snacks such as doorstep sandwiches and jacket potatoes, starters such as West Country crab cakes and Stilton and leek tart to main courses such as cod and chips, Cajun chicken or Andy’s own recipe, homemade burgers. Vegetarian and children’s options will also be available – and this doesn’t mean just chicken nuggets for the kids. Having two young children, Lily and Ronnie, the Fox’s know the problems of eating out as a family. Sarah says, “We know what a nightmare it can be going out with young children”, so there will be an imaginative menu for them, “but not at a stupid price”.

Mini ploughman’s, cheese on toast and mini homemade burger will be on the menu, with desserts such as ‘build your own’ ice cream sundae to follow, which is sure to become a favourite. They also will provide books to help keep children entertained, as well as providing play equipment in the garden – now that the Royal Oak has a garden.

The mass of brambles, shrubs and trees of a month ago – “a jungle” – is now a beautiful lawned and landscaped garden. The trees have been thinned out to provide a large, inviting area which can now be accessed from the main pub.

The biggest problem the couple has encountered in readying the

pub for launch day has been “the mountain of junk from the last ten years” that has accumulated at the Royal Oak. They say that they completely underestimated the extent of this. Three skips gobbled up a lot of it, but a bonfire was necessary to dispose of timber materials. Andy and Sarah have offered profuse apologies for the nuisance this may have caused, especially to their nearest neighbours.

From within this junkpile, there have been some ‘finds’, most

notably some “lovely pictures that probably haven’t seen the light of day for years”, Sarah says. These will be displayed in the bar. The two-legged china horse, found in a drawer in the skittles alley, probably will not be put on show.

The Royal Oak has seen a high turnover of landlords during recent years, all failing to make the pub a success. How do Andy and Sarah see themselves as bucking this trend? “We’re in it for the long haul and I think no one else that’s been here has had that incentive because of the terms of their lease”, they say. “Being involved in the village –and that we care. It’s our home and our children’s home”, they say, will contribute to the pub’s success. They have already expressed an interest in running a beer tent at next year’s May Fayre. Andy and Sarah also would like suggestions for a new name with village connections for one of the draught ales that they’ll serve, offering a £50 voucher for the winning suggestion.

They hope to provide a service that makes

people want to return. Andy says, “I think if people try it, they’ll like it. It’s completely different to what it has been like”. But he is under no illusion. “It’s down to us to make people want to come back – hopefully, we’ll be able to do that”. Hall & Woodhouse are also very optimistic for the pub’s future. Matt Kearsey says that the brewery will work with the couple “to re-establish the pub as one that both the village and Hall & Woodhouse can really be proud of”.



Soon to disappear!

## ‘Milborne Ale’ Competition

### Win £50.00

HALL & Woodhouse have given permission to Andy and Sarah to re-badge the Sussex ale as a ‘house’ beer. A £50 voucher to be spent at the Royal Oak is up for grabs for the most apt suggestion, as picked by the Fox’s. It’s suggested that the new name will have some Milborne or local connection.

Sussex ale is a well-balanced beer with fruity, hoppy cereal and biscuity notes with an alcohol content of 3.5% ABV.

Please post your entries with your name and telephone number in the Competition Box in the pub.

Closing date Monday 21st September .

**PS** We are putting together a website for the pub and would like to add a bit on the history of the Royal Oak. In time I hope to be able to research this a little myself and add to it, however we are a bit up against it on time at the moment and wondered if any of you know any useful or interesting historical facts about the pub? Anything that you think may be of interest would be appreciated.

As a starter I have been told the building dates from 1741 . . . any ideas if this is true?

Kind regards, Sarah

# Come to The Show!

WE are hoping to see everyone in the village at The Show in the Village Hall on Saturday 12th September from 2 - 4pm. There you will be asked to choose the best in every category of flowers, produce and photograph and your votes will decide the winners. Competitions for largest and heaviest items will also be held, with a grand Weighing Master (or Mistress!) and all details of the categories, which we would like you *all* to enter, are to be found in the Post Office and the Londis Store.

In addition to the competitions there will be delicious teas to refresh you after the efforts of your voting, and displays by village artists and a craft exhibition. A valuable raffle will offer splendid prizes, including fully planted hanging baskets for your winter garden.

Please deliver items for the competition to the hall from 11am to 12 noon on the day. Please help to make this a splendid celebration of what we can do and what we grow in Milborne St. Andrew.

*Shirley Dunkley*

## Horticultural Society Report

GARDEN Club members have been out and about on days blessed by sunny weather. In July about 20 members made a tour of five gardens on Portland including a modern dry garden at Portland Castle, marine plants grown on Chesil beach, the Chesil Community Garden built in an old council road depot, two private gardens packed with a wide range of interesting plants, and Pennsylvania Castle, a large garden with a huge man-made waterfall and wonderful views. A picnic lunch was much enjoyed up by the Heights overlooking the bay. Later that month we enjoyed a coach trip to Cothay Manor in Somerset where we saw the gardens and were given a tour of the very interesting 15th century manor house.

August saw us visiting members' gardens to see what was growing, and later our annual summer supper was hosted by Steve and Helen Lord.

*John Wright*

GET READY FOR  
**THE SHOW**  
at the Village Hall  
on Saturday September 12th

 \* Prizes for  
\* Flower arrangements  
and Single Blooms

 The **HEAVIEST**

 The **LONGEST**

 **PHOTOGRAPHY**

and a  
**Children's Section**  
EVERYONE CAN ENTER



**WOODS**  
(DORCHESTER) LTD

# Funeral Directors

Established in Dorchester since 1878

**Monumental Masons**

AVAILABLE 24 HRS A DAY

Paul R. Gawler M.B.I.E. Dip.F.D. M.B.I.F.D.

Peter Lemm Dip.F.D. M.B.I.F.D.

DORCHESTER 01305 250425

WEYMOUTH 01395 759812








# designer Gardens

Professional Garden Designer - designing and creating beautiful gardens and landscapes


 Creative and practical designs to suit all styles of garden

 Project management from design to completion

Give me a call to discuss your requirements:

**Maureen Lock**  
16 Huntley Down  
Milborne St Andrew

 Construction by experienced quality landscapers

 Planting schemes and border designs

t: 01258 837929 m: 0778 660 8776 e: maureen@designergardens.biz



## In your Garden Seasonal notes and tips from Maureen Lock of *Designer Gardens* Autumn Colour

AUGUST is always a difficult time in the garden for colour – most of the lupins, delphiniums and poppies are over and we await the colours that September can bring. Of course, plants like Rudbeckia, Echinacea and dahlias look great in August, as do some of the later flowering shrubs such as Hydrangeas – but you do have to plan what comes into flower during the year. This can be difficult with a small garden as one of everything can make the garden look bitty and messy. You can help this by choosing a colour scheme so even if plants flower at different times, they follow a plan – look at the colour wheel and decide whether you want blues, mauves/deep pinks and whites brightened up with a touch of yellow – a pastel scheme; or a hot scheme using reds, oranges and yellows.

Remember that reds will jump out at you in the border and dark colours recede. Whites and other pale colours look great in the evening as you can actually see them. I always think that pastel colours always work well with our pearlescent skies.

You can extend the interest in your garden by using lighting in the borders. As the nights start to draw in, it is great to look out and see the plants lit up through the window. Now, lighting is a whole subject in itself and needs to be planned carefully – so take a look at your borders and consider which plants would look best illuminated. More about this next time.

September is the time when the ornamental grasses that come into their own; their colours and soft forms arch and wave over other plants

in the border. The ponytail grass *Stipa tenuissima* looks particularly good when planted in small groups and just makes you want to get outside and touch it. Grasses need to be planted in blocks of at least three to give the greatest effect. When the grasses start to flower – their yellow and gold colours are at their most spectacular and they mingle well with the autumn colours of Sedums, blue asters, purple Echinacea and bright yellow Rudbeckia. It is the deciduous grasses that provide the most spectacular autumn colours.



**Grasses are easy to care for. You don't need to** cut them back until February–March which adds to the seasonal interest in the garden throughout the winter. Keeping the stems also protects the roots from winter damage as well as looking great

if there is a frost. Leaving the heads of sedums and echinacea over the winter will also add to the texture and form in the border.

Grasses are happy to be grown in pots as long as they are kept fed and watered just as you would any other plant. Put them in a good quality compost and add a slow acting fertiliser such as Osmocote, if not they will need to be fed when actively growing. Every now and again they will need to be repotted and split up – it is always a good idea to do this before the plant gets completely pot bound, or you may end up losing the plant and the pot!

Good places to see grasses at their most spectacular in the late summer are Knoll Gardens near Stapehill in Dorset and Lady Farm near Bristol in Somerset.

### ALTERATIONS AND REPAIRS

For a friendly service at competitive prices

Also available to make curtains, outfits for special occasions, including bridal wear



Call Sandra

01258 837637

### AVAILABLE NOW

Small bale hay suitable for stable or pets  
£2.50 delivered to local area  
(within 5 miles of Milborne St Andrew)

£2.00 a bale  
pick up from barn in nearby village

Ring or text Andy on:  
07899 976679

# Did you meet . . . Margaret Evans

PERHAPS my only claim to fame is the fact that I was born in Stratford, London, and I guess the foundations of my first home could lie somewhere under the 2012 Olympic stadium.

When bombing of London started in earnest in 1940, instead of we three children being evacuated to a safer place, my recently widowed Grandfather suggested we live with him in Solihull, then in Warwickshire.

As a 13 year old schoolgirl, I had a 'crush' on a young man in R.A.F. uniform who sometimes attended the Congregational Church with his parents, (as my family did) before having to rush off to the barracks where he was stationed. After demobilisation, we got to know one another and were married in 1952.

We had two homes in South Wales, the first in Barry and then in Dunvant, a village similar to Milborne St. Andrew, 5 miles from Swansea. It was in Barry I had my most embarrassing moment, I had bought a tin of white paint, I was carrying this, also carrying my year old daughter Catherine. Somehow I dropped the tin of paint, the lid flew off and white paint was spilt all over the pavement and me. Although the owner of the shop where the paint had spilt was very kind to us, I dreaded going along that street and it took months for the splashes to fade.



We came to Milborne St. Andrew in 1991 to be nearer our daughter who had settled in Bere Regis with three small children, and I've really enjoyed my time here. I've tried to get involved in village life and it's been good to see the village develop and grow, especially the last few years with the sports centre, and village hall improvements. My working life involved secretarial duties and I joined the village hall trustees as their secretary in 1998. I've enjoyed being a member of The Milborne Players, W.I. and Wednesday Social Club as well as supporting the Village Hall Trustees. I've made a lot of good friends over the years and for their friendship and support I have been most grateful.

Now it's on to pastures new, I've decided I'd like to live in Blandford Forum, and by the time you read this, hopefully I'll be settled in my new home. When you get my new address and telephone number, please come and see me and we'll have a cuppa and chat.

P.S. Want to know my pet hates? Dog walkers who refuse to pick up their dog's poo and drivers who rush through the village defying the speed regulations. My philosophy in life, love God, and treat your neighbours as you would wish to be treated, then there would be no hurt.

## HEALTHY EATERS – Friendly Weight Loss Support Group

WE meet every Thursday at 7.00pm in the Committee Room at the Village Hall. Joining fee is £5.00 and first night free. Thereafter £1.00 a week. No charge for absenteeism. Total confidentiality guaranteed. After expenses, hire of hall etc proceeds to The Surgery, Milton Abbas.

**BUSY BEES**  
MILBORNE ST ANDREW UNDER 5'S PLAYGROUP  
**THURSDAY**  
**9:30-11:30**  
MILBORNE SPORTS PAVILLON

IF YOU HAVE A BABY, TODDLER OR PRE-SCHOOL CHILD, COME AND ENJOY WARM FRIENDLY COMPANY WHILST YOUR LITTLE ONE PLAYS WITH TOYS AND INTERACTS WITH OTHER CHILDREN.

DRINKS AND SNACKS PROVIDED

**£1:50 / SESSION**

CONTACT: RUTH 07905358299  
BUSYBEES@EVANS-FAMILY.UK.COM

## Sohani Gonzalez

B.A., M.C.H., R.S.Hom

Registered Homeopathic Practitioner with over 25 years experience in Sussex, London and Dorset

- Nutritional and Dietary advice
- Allergy Testing

Homeopathic medicine is over 200 years old. It is popular worldwide because of its effectiveness, safety and its ability to treat all kinds of physical and emotional problems.

Consultations available in the Blandford Forum and Dorchester areas

Please call for an initial appointment

**01258 839043**

[www.sohani-homeopathy.com](http://www.sohani-homeopathy.com)

# CHRIS COWELL

## Master Thatcher



Small Patches to Complete Renovations

**Tel: 01305 853010**  
**Mob: 07770 774431**

email: [chris@chriscowell-thatching.co.uk](mailto:chris@chriscowell-thatching.co.uk)



**Greenways Tree Care  
and  
Garden Services**  
(fully insured)



Felling  
Reductions  
Pruning  
Stump Grinding  
Hedges  
Lawn Maintenance  
Turfing  
Strimming  
Garden Fencing  
Chippings available

**Tim Moore**  
01258 837124  
07968 154708

20 years experience  
Free estimates and advice  
Dewlish, Dorchester

# The Oak

at Dewlish

A traditional village  
pub where you will always be  
offered a warm welcome in a  
friendly atmosphere.

Enjoy well-kept real ales and good,  
home-cooked food made from local  
produce.

Children are welcome.

Traditional Jazz and Dixieland  
music at 8.00pm on the last  
Thursday of every month.

Telephone 01258 837352

Dewlish Village, Dorset. DT2 7ND

# GRASSBY FUNERAL SERVICE



*Still a family run business,  
serving the local community  
since 1861*

CHAPEL OF REST

24 HOUR SERVICE

PRE-PAYMENT PLANS

**8 PRINCES STREET, DORCHESTER**

Tel: 01305 262338

Email: [info@grassby-funeral.co.uk](mailto:info@grassby-funeral.co.uk)

**MEMORIAL MASONRY**

*Memorial Showroom at  
16 Princes Street, Dorchester*

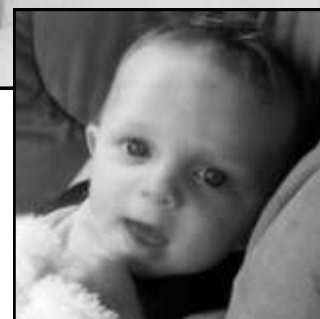


[www.grassby-funeral.co.uk](http://www.grassby-funeral.co.uk)



## Baby Boom in Milborne St. Andrew

Babies born in the last five months: *Left to right:* Brooke Savannah Howells; Finley Alexander Carpenter; Samuel John Richards; Elizabeth Emmie Mellor; Myles Henry Stewart; Brooke Louise Young. *Inset:* Born in January; Connor McLaren Young.



### **GERRY'S PLANTS**

Shrubs, Perennials, Climbers,  
Summer and Winter Bedding  
plus lots more sundries

**B&B also available**

Come and see them at

12 The Rings  
Milborne St Andrew

**Tel: 01258 837386**

Large Beer  
Garden

11 En Suite  
Letting Rooms

Private Parties  
Welcome

Function Room  
Available



**The Fox Inn**

**Ansty**

**\*\* Our Next Curry Night is Thurs. 24<sup>th</sup> September! \*\***  
*Booking Essential!*

Proud to be Serving Local Beef from Melcombe Park Farm

Every Fri & Sat Night through the Summer  
Seafood Supper Menu at £25.00 per person  
to run alongside our usual a la carte menu

Every Monday and Tuesday Lunch  
2 Course Lunch just £7.95 per person!

For reservations please call 01258 880328 or drop in and see us

Ansty Dorchester Dorset DT2 7PN

[www.anstyfoxinn.co.uk](http://www.anstyfoxinn.co.uk)

[www.treeguy.co.uk](http://www.treeguy.co.uk)



## Chris Baxter Arborists

*Caring for Dorset trees*

Pruning & felling carried out to BS3998 standard, tree planting and aftercare, hedgework and stump grinding, emergency tree work & mobile sawmill, tree surveys, arboricultural consultants BS5837 standard.

ND Arb. NCH Arb. NPTCs  
First Aider at Work, Aerial Rescue, Fully Insured

01258 453 299 or 01202 779 264  
Office 8.30-12.30 pm Mon-Fri  
[treeguy@btinternet.co.uk](mailto:treeguy@btinternet.co.uk)

## LOGS

£60.00 per load

contact

Mark Revell  
Milborne St. Andrew  
837 536

ROY MORBY  
Painter, Decorator



57 Hopsfield  
Milborne St Andrew  
Blandford Forum  
Dorset DT11 0LO  
Tel: 01258 837125

## Wild Art Club exploring wildlife

WILD Art Club this summer have been making the most of the sunny weather exploring wildlife in the school grounds. The children chose to spend sessions in the wildlife area, pond dipping, looking at insects, plants and sitting in the shade drawing what they found.



The pond is full of life, with Palmate newts in abundance, dragonflies and of course frogs as well as numerous other creatures that most of the children can identify.

The slow worms have disappeared, but we do have an enormous ant colony under the carpet, which may be the reason!

In May we found a nest full of chicks in a gate post, possibly a robin, but we tried not to disturb them and after half term they had fledged.

On wet days we have explored the Jurassic coast with a touch display of shells and fossils for the whole school to study. The children have

created pictures using pastels, paint and crayons and made clay models of sea creatures. We have built a large model of a Tawny owl out of papier mache and mod-



rock, which was messy, but therapeutic for the adults, the clearing up took a while and however big the aprons there is always a lot on the children! tawny owl will be on show in the autumn when the whole school will be involved in the Tree project again with Rachel Palmer.

Rachel Palmer and the Dorset Branch of the I.T.F. are organising a fancy dress competition open to all children at the Oak Fair at Stock

STOCK GAYLARD  
OAK FAIR  
[www.stockgaylard.com](http://www.stockgaylard.com)  
Tree Folk Fancy Dress Competition



Sat. 29<sup>th</sup> Aug.  
Children's Area  
I.T.F.  
Judging at 2pm  
Entry £2 on the day

Tree Fairies,  
Elves,  
Gnomes or  
Woodland animals  
Judging criteria and most original costumes

Gaylard on 29th August and I have attached a poster with artwork by Natalie Park.

I would like to thank my helpers who bring so much extra to Wild Art Club, Amanda Valentine, Vanessa Clarke, Rick Saunders and Pat Tribe, who hopes to be back in September.

Lastly "Good Luck" to Natalie and Emily (my longest serving members of Wild Art Club) and to Leah Clarke who

won the prize for growing the best apple trees in the Schools project, they are all off to Puddletown to expand their knowledge and experience.

Wild Art Club starts on the 8th September and is open to all children from years 1 to 4.

Mary-Ann Featherstone

## June and July weather in our village

JUNE was the fourth consecutive month with lower than average rainfall. 41.6mm of rain fell during the month which was 73% of average. 22.1mm of that rain fell with a thunderstorm on the 6th and another thunderstorm on the 25th resulted in 11.2mm of rain.

Although the growing season had been quite dry up until then, the total rainfall for the first half of this year was 91% of average. There was a hot and dry start to July but the weather pattern changed to a more showery airflow on 5th and this weather pattern continued for the rest of the month. Total rainfall for July was 111.4mm which was 228% of the average for that month and made it the second highest July rainfall in Milborne for 39 years. There was 114.7mm of rain in July 1978.



The weather pattern around the middle of July is often an indicator as to the weather pattern for the rest of

the summer which is probably why the tale of St. Swithin has persisted for centuries. I recorded a trace of rain on St. Swithin's Day (15th July) which meant, if Weather Lore is to be believed, it would rain for the next 40 days. So far it has rained on 23 days out of 31 since St. Swithin's day. The Met. Office claim the tale to be a myth as it has been put to the test on 55 occasions and on no occasion has 40 days of rain followed a wet St. Swithin's Day. The Poet and Dramatist John Gay was aware of the tale as a myth in the 18th century and was prompted to write:

"Let not such vulgar tales debase the mind,  
Nor Paul nor Swithin rule the clouds and wind".

*Pluvius*

## Rainbow Pre-School

*12 The Business Centre  
East Luccombe, Milton Abbas*

**high quality pre-school education for 2-5 year olds**

*open 5 days a week  
morning and afternoon sessions  
open through school holidays  
qualified and experienced staff  
who are dedicated, caring, enthusiastic  
set in open countryside  
easy parking outside play area*

\*\*\*\*\*  
Come and see what makes Rainbow special...  
To find out more and arrange a visit please speak to  
Verina or Denise: **01258 880795**  
We are open Monday-Friday am & pm  
Now booking places for September...  
\*\*\*\*\*

Rainbow Pre-School, Luccombe Farm, Milton Abbas  
01258 880795

Reg. Charity no. 1027657 Ofsted no. EV363567

## MAGNA WINE COMPANY

*Affordable Italian Wines*

<p><b>White</b> Pinot Grigio Trebiano Chardonnay</p>	<p><b>Rosé</b> Pinot Blush</p>	<p><b>Red</b> Merlot Montepulciano Valpolicella</p>
--	------------------------------------	---

£15:00p per ½ Case (Six Bottles) i.e. £2.50p per bottle with free local delivery  
Call Richard on: 01258 880571 or email [order@magnawine.co.uk](mailto:order@magnawine.co.uk)

### *Everyday wines for an everyday price*

## *Domestic Appliance Repairs*

LOCAL  
(Bere Regis)

# 01929 462222

No call-out charge  
No charge if the equipment proves  
uneconomical to repair

## Martin Dare

### ENGRAVING AND ROSETTES

*A large range of trophies, tankards, signs,  
medals, glassware, gifts and rosettes*

**A quality local engraving service**

telephone: 01305 848448  
email: [engraving@martindare.co.uk](mailto:engraving@martindare.co.uk)  
www.martindare.co.uk

# It's a dog's life . . .

YOU could be forgiven for thinking that Emma Northover has a multitude of dogs – she can often be seen around Milborne and surrounding villages walking a variety of dogs at all times of the day. But the fact is, Emma is a life-saver for very many dog owners. Going on holiday? Emma will house-sit your pooch. Out at work all day? Emma will pop in to let your hounds out so that they can uncross their legs, or take them for a good walk.

She has just done a two week house-sit for holidaying clients though, surprisingly, this is a quieter period for looking after dogs whilst owners are away. With the economic climate and people having less money in their pockets, Emma has been keeping busy with lots of 'one-off' jobs, with people going out for the day rather than going away. This is all on top of her regulars – she walks up to seven different owners' dogs, which can mean seven hours of walking! She mainly has local clients in Milborne and surrounding villages but has walked dogs for people as far as Buckland Newton.

Professional dog walkers have had a bad press of late, with some councils imposing a limit on the number of dogs that can be walked by one person on their land. On Hampstead Heath, it is not uncommon for up to 14 dogs to be under the 'control' of one person. Emma, who has a National Diploma in Animal Management taken at Kingston Maurward, would never entertain walking more than one owner's dogs, unless she was absolutely sure that they all mixed well (and of course that the owners consented).

She says "I don't see how you can give the attention to each of them – if there is a problem, you only have to worry about that one thing". As

an example, Emma says that one of 'her' dogs she was walking recently cut its paw on broken glass whilst in a stream in Bere Regis. As it was, she could get back to the owner's house quickly. Had she had a pack of dogs this wouldn't have been so simple.

But this kind of problem is thankfully quite rare for Emma. The lot of the professional dog walker seems to be hampered more by our wonderful weather. Earlier this year when much of Dorset was covered

in snow, Emma was house-sitting at Crawthorne looking after two dogs and horses. She was snowed in, "I couldn't get out at all – my mum had to come and get me [in her 4x4] every day" so Emma could walk her other clients' dogs in Milborne and around.

On another occasion she arrived in Melcombe Bingham, but stopped at the ford. "It was completely

flooded, I had no way of getting my car through – I had to walk through and it went over the top of my wellies! But the owners were away for the whole day, so I had no choice – the dogs would've been left all day otherwise".

Her latest house-sitting has involved a weightier problem though – the owner had allowed the Doberman run of the house, including upstairs. Emma awoke one morning to find that her bed space had narrowed considerably . . . then she realised that she'd been joined at some point overnight by her canine charge!

Emma Northover can be contacted on 07964 472763 and 837620

Ed Richards



**Magna**  
COMMUNICATIONS LIMITED

## ADMIN ASSISTANT

Milborne St Andrew  
Full or part time

*If you can tick these boxes.....*

- |               |                          |                                    |                          |
|---------------|--------------------------|------------------------------------|--------------------------|
| Reliable      | <input type="checkbox"/> | Cool headed                        | <input type="checkbox"/> |
| Organised     | <input type="checkbox"/> | Good telephone manner              | <input type="checkbox"/> |
| Quick learner | <input type="checkbox"/> | Office experience                  | <input type="checkbox"/> |
| Team player   | <input type="checkbox"/> | At home with Word, Excel & Outlook | <input type="checkbox"/> |

*... we'd like to hear from you.*

Call Sharon Parfitt on 0771 320 9869  
or email on [sharon.parfitt@magna-communications.com](mailto:sharon.parfitt@magna-communications.com)

# Community Contacts

## Councils

Environment Agency Floodline		0845 9881188
North Dorset District Council	Cllr Michael Cox	01258 881396
Parish Council – Dewlish	Clerk: Pat Gubbins	01258 881348
	Chair: Mike Claydon	01258 837314
Parish Council – Milborne St. Andrew	Clerk: Colin Fletcher	01258 450639
	Chair: Simon Curtis	01258 839000

## General – Adult

Drop-in Centre – POPP	Rose and Ed Frost	01258 837921
IT Club (Connecting Dorset)	Sue Gould	01258 837575
Ladies Group – Dewlish	Judith Bridgen	01258 837157
Memory Lane Swing Band	Bob Boorman	01258 839077
Wednesday Social Club	Margaret Evans	01258 450518
Women's Institute	Heather Hogg	01258 837392

## General – Youth

Beavers and Cubs	Sue Mullett	01258 839076
Hazelnuts out-of-school club	Hazel Barrett	01305 848588
Ladybirds (Playgroup)	Marion Bishop	01305 848427
Ranger Guides	Adrienne	07870 887049
Scouts	Jim Burg	01258 837466
Under 5's Group – The Busy Bees	Jane Williams	01258 839291
Youth Club age 8 – 14 yrs	Sallie Maitland-Gleed	01258 837442

## Police

Police – Non-emergency contact		01202 222222
Community Beat Officer	PC Dave Mullins	01202 223003
		07825 521850
Community Beat Officer (Dorch)	PC Charlie Dale	01305 222222
Community Service Vehicle	CSO Angie Partridge	01202 226000
Safer Neighbourhood Team		
Blandford Rural South	PC Dave Mullins and PCSO Luke Goddard	01202 223003 or 07825 521850

Or email [blandfordruralsouthSNT@dorset.pnn.police.uk](mailto:blandfordruralsouthSNT@dorset.pnn.police.uk)

## School

Milborne 1st School		
Headteacher:	Anne Purdy	01258 837362
Chair Govs:	George Legg	
Friends of School chair:	Sally Taylor	

## Special Interest

Bellringers	Pip Bowell	01258 837329
Food & Wine Society	Tony Dyer	01258 837061
Healthy Eaters	Heather Gipps	01258 837058
Horticultural Society	Shirley Dunkley	01258 837446
MSA Friendly Art Group	Sue Marsh	01258 837414
Milborne Players	Roy Sach	01258 837033

## Sport

Round Robin Ramblers	Steve Lord	01258 839222
Abbey Swimming Club	Pat Cowan	01258 880601
Adult Tap Dancing Milton Abbas	Libby Goodchild	01305 268029

If you would like to be added to this list, then contact the Reporter

Archers – Crossways	Michelle Jones	01258 837045
Athletics – Junior	David Pearson	01258 837057
Badminton	David Payne	01258 837700
British Horse Society (Dorset)	Carol Shoopman	01258 880318
Circuit Training and Pilates	Claire Barratt	01929 554999
		07946 732769
Cricket – Dewlish	Elaine Kellaway	01258 837696
Cricket – Junior (11 – U13)	Derek Lamb	01258 880523
Cricket Club – Milton Abbas	Derek Lamb	01258 880523
Football – Adult	Paul Morgan	01258 837619
Football – Reserve Team	Andy Draper	07824394436
Football – Under 15s	Grant Taylor	07879841518
Football – Under 11s	Daryl Sims	01258 881397
Modern Sequence Dancing	Grace Davies	01258 837261
Running Group	Anne-Marie Pearson	01258 837057
Skittles – Dewlish	Frank Ross	01258 837366
Sports Club		
Chairman:	John Sanderson	01258 837049
Bookings:	Jenny Balcon	01258 837121
Table-tennis (over 50's)	Geoff Hodgson	01258 837472
Tap Dancing for Men and Women		01258 880523
Yoga	Sue Chapman	01305 848053

## Village Hall

Dewlish		
Chairman:	Alex Carter	01258 837312
Sec:	Paul Prickett	01258 839097
Milborne St Andrew		
Chairman:	Richard Lock	01258 837929
Caretaker/Booking Sec:	Alison Riddle	01258 837030

## Assistant secretary wanted

MILBORNE St. Andrew Village Hall committee are looking for an assistant secretary to work with the present secretary Margaret Evans. It is a most interesting post among keen and enthusiastic members of the village working for the good of the hall. Meetings are on the third Thursday of the month 7.30pm in the committee room. Please contact Margaret on (01258) 450518 if you would like to be a member of this team.

## Computer Drop-in session restarts Monday 14th September from 7.00 to 8.00pm

A new academic year, a new time and a new face! Mark Dyer is to be helping me this year, thanks Mark! We will be open at 7pm and the sessions are for one hour starting on Monday 14th September. Anyone who wants to can pop in, there is free access to the internet via a broadband link. I will be opening until the end of October (half term) at this new time, as feedback has indicated that our original, earlier time was not really very convenient for lots of people.

Just a thought, if you want to come and do your homework or research, bring a memory stick to save your work, or I have some that can be purchased (£1.99). If you have any questions, just give me a ring – Sue Gould 01258 837575.



# Community Events Diary

Add your event to this diary by contacting the *Reporter* – tel: 01258 837921 or email: reporter@milborneandrew.org.uk

## September

Wednesday 2nd	Wednesday Club Mystery Trip
Friday 4th – Saturday 5th	Milborne Players Caught in the Net. VH 7.30pm
Tuesday 8th	Wild Art Club restarts – see page 13
Wednesday 9th	MSA Friendly Art Group VH CR 7 – 9pm Badminton Club restarts MSA First School 7 – 9pm – see page 31
Thursday 10th	WI Ribbons, Roses and Flowers by Mrs Williams
Saturday 12th	Dorset Historic Churches Annual Cycle Ride Horticultural Society The Show VH 2 – 4pm
Monday 14th	Computer Drop-in restarts VH CR 7 – 8pm
Thursday 17th	Dewlish Coffee Morning – see page 5
Saturday 19th	Food and Wine Sturminster Cheese Fair Food and Wine Purbeck Vineyard Visit Corfe Castle
Monday 21st	Royal Oak Closing date for Competition to win £50
Wednesday 23rd	MSA Friendly Art Group VH CR 7 – 9pm
Thursday 24th	Horticultural Society The Importance of Plant Selection in New Developments. Mr Harris NDDC VH 7.30pm
Sunday 27th	Harvest Lunch VH 12.30pm – see page 2
October	
Friday 2nd	Moviola Last Chance Harvey VH
Saturday 3rd	Church Yard clean-up 10am – see page 5
Wednesday 21st	MSA Friendly Art Group VH CR 7 – 9pm – see page 3
Thursday 29th	Wednesday Social Club Coach outing to see HMS Pinafore at Poole Lighthouse – see page 2

## Regular Bookings at the Village Hall

Computer Club Monday 6.15 – 7.15pm CR (term time only)  
 Ladybirds Playgroup Monday – Fri 8.45am – 1pm MH (term time only)  
 Players every Monday 8 – 10pm MH  
 Village Hall Committee meetings 2nd Monday of month  
 ABC Line dancers every Tuesday 7.30 – 10pm MH  
 Scouts Beavers/Cubs Tuesday 5.45 – 7.15pm MH/CR (term time only)  
 Exercise and Relaxation Class Wednesday 1.15 – 2.45pm MH (term time only)  
 MSA Friendly Art Group 2nd and 4th Wednesday 7 – 9pm CR  
 Wednesday Club 2nd Wednesday 2.30 – 4.30pm MH  
 Horticultural Society 4th Thursday 7.00 – 10pm MH  
 Healthy Eaters every Thursday 7.00 – 8.00pm CR  
 Karate every Thursday 5.10 – 6.40pm MH  
 WI every 2nd Thursday 7 – 10pm  
 POPP Drop-In every Friday 10am – 12 noon CR  
 Youth Club every other Friday 6.30 – 8.30pm MH (term time only)  
 Sequence Dancing 3rd Saturday 7.30 – 10.30pm MH  
 Village Lunch Last Saturday of the month 11am – 2.30pm MH/CR  
 Milborne Praise! 3rd Sunday 3.30 – 5.30pm MH  
 Moviola and supper about every 6 weeks, look out for the posters, 6.30 – 10.30pm MH/CR  
 Artsreach Events – look out for the posters.

Check Village Hall Notice Board for any other events that are one off for you to join in with.

## Regular Bookings at the First School

Pilates Monday 7.00 – 8.00pm (term time only)  
 Yoga Tuesday 6.15 – 7.45pm (term time only)  
 Badminton Wednesday 7.00 – 9.00pm (term time only)  
 Circuit Training every Thursday 7.00 – 8.00pm

## “Caught in the Net”

by Ray Cooney

4th and 5th September 2009

THIS production which was originally scheduled for 3rd, 4th and 5th July but has been postponed to new dates in September. Unfortunately, Roy Sach, who was playing the pivotal role of John Smith was not well enough to perform and although Roy is now improving he has given up his role to join me as assistant Director to prepare for the new dates.


Andy Coetzee, stage manager extraordinaire and my former assistant Director will now take the role of John Smith. Luckily most of the hard work for building the set is under his belt so he is ready for another challenge.

Ray Cooney writes fast paced comedy which are a delight so don't miss out. If you haven't booked your tickets yet contact Marion Regan on 01258 837174. For further information please check out our website [www.milborneplayers.org.uk](http://www.milborneplayers.org.uk)

WE NEED YOU !!! – *Pantomime Season* is approaching again – oh yes it is, and we will be looking for actors junior and adult, a wardrobe mistress, costume makers, backstage crew, etc, to join in for February 2010. Rehearsal will start in October. We are also looking for a keyboard player/pianist/musician(s) so if any of these are your thing please get in touch. You can ring me on 01202 621547 or make contact via our website [www.milborneplayers.org.uk](http://www.milborneplayers.org.uk). More information will be available shortly.

Caroline Nobbs Director

Blandford · Dorchester · Shaftesbury · Sherborne · Weymouth · Wimborne




# Dorsetlettings

.co.uk

**Dorset's leading letting agent**

- ▶ specialists in residential lettings since 1984
- ▶ reputation built on reliability and efficiency
- ▶ experienced, ARLA trained and qualified staff
- ▶ professional advice, friendly service



24 Market Place, Blandford, DT11 7EB  
blandford@dorsetlettings.co.uk 01258 452444

ARLA  
ASSOCIATION OF  
RESIDENTIAL LETTING AGENTS

## KM Electrical Kevin McLaren Electrical Contractor



- All types of electrical work undertaken
- Extra points to full rewiring
- Test & Inspection of building wiring
- Professional, quality service

Telephone: 01258 881 439  
Mobile: 07712 646 131  
Email: km.electrical@btinternet.com

ELECSA REGISTERED MEMBER  
ECA

## INKJETS LASERS FAXFILM

# Need a new cartridge?

NO minimum order and delivered to your door





**01258 880050**

The Rural Business Centre, Winterborne Whitechurch, Blandford DT11 9AW  
Tel: 01258 880034 Fax: 01258 881448  
For info on recycling your empties, email: cashback@thecartridgefamily.co.uk

**PRINTERS ACCESSORIES MEDIA**



# COUNTY TREE SERVICES

All aspects of Tree Surgery undertaken

Commercial and Domestic  
Fully Certified and Insured

- Re-shaping
- Reductions
- Pruning
- Dismantling
- Section Felling
- Hedge Cutting
- Stump Removal
- Equipment Hire
- Land and Site Clearance
- 24 Hour Emergency Call Out

Free Estimates

Tel/Fax: 01258 837377  
Mobile: 07971 276980



**Quality Seasoned Hardwood Logs**

Various loads at £50 and £95

Free delivery throughout the area

*Wood Chippings available*

Stratford House, Milborne St. Andrew. Dorset DT11 0JA  
email: info@countytreeservices.com

www.countytreeservices.com

## A 5½ mile circular walk

From Milborne St. Andrew via Roke Barn and Weatherby Castle LEAVE the Square and cross the road towards Fairfield House on Blandford Hill. Take the new footpath and head uphill into the field at **the back of the children's playground. On entering the field head for the centre and continue ahead to the gate in the middle of the top hedge.**

Cross the road (Lane End) and take the bridgeway straight ahead, with the sports field on your left. Keeping in the same direction, walk along another field until you come to a second gateway. As you pass through here you will see another gate immediately on your right. Go through this one and turn left. With the hedge now on your left carry on for about 2½ km. You will pass through a double gate, cross over a concrete farm track and pass a wicker gate on your left.

You are now on part of the Jubilee Trail. Keep on the Trail ignoring the bridgeway on your left. After a further 450m you will come to a cross of bridgeways (see the photo of the signpost).

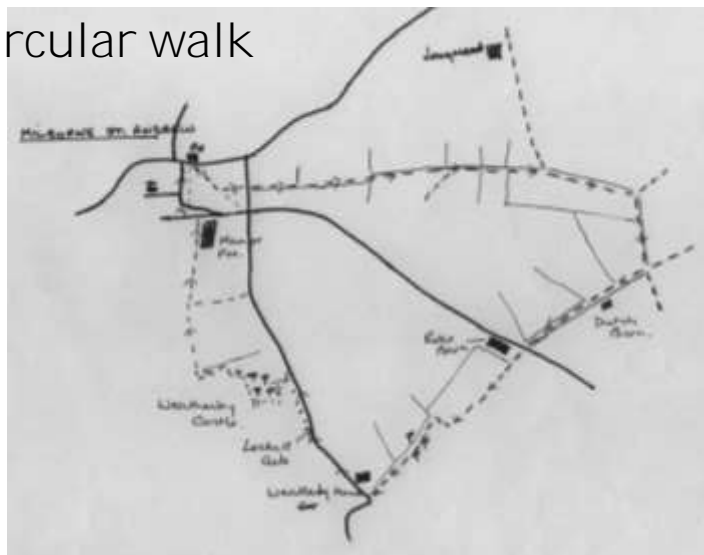


Trail and turn right. You will see a dutch barn ahead of you across the hedge. Continue down this path to the Bere Regis road, the last part of this path is between a double hedge.

Cross the road and enter the wicket gate ahead. Roke Barn is on your right. Cross this field and the steepish bank beyond

(see notes below) keep to the right of the bank and pass through a gate at the top. With the hedge and fence on your left follow the field round, bearing right. Go through the gate and with the hedge now on your right head for a small wood.

There is a clear path through this wood before you come to a grassy downhill path with a wire fence on your right. As you come out onto the road you pass Weatherby House on your right. Turn right along the road and take care as you walk a little under a kilometre to the next



stile. (It is just before the 5th telegraph pole *after* the locked gate on your left.) Over the stile and head uphill towards Weatherby Castle. Circle ¾ of the way round the castle, clockwise, when you will see a hedge ahead. Turn left down alongside this hedge to a stile at the bottom.

Immediately cross another stile and continue along the field with the hedge on your left. This leads you to the end of Snag Lane. Continue ahead along the farm track to Manor Farm. Cross over the Grove and take the short path to your left back to the Causeway and the Square. Notes: The field alongside Roke Barn has no proper path – if cropped follow the tractor tramlines. The steep bank at the top is very badly overgrown, but has been reported to the Rights of Way Department. Weatherby Castle – A small Iron Age Hill Fort. Seven acres in size, the obelisk in the centre was erected by Edmund Morton-Pleydell in 1761.

*Anne Snape*

## Pottery comes to Milborne St Andrew

Starting Wednesday 16th September  
1900 till 2130 each night

Structured course of 12 lessons for beginners learning all the basics in  
throwing stoneware pottery.

Experienced potters welcome as well.

Also Handbuild pottery where only your imagination limits you in what you can do.

Cost £96 for 12 weeks (equivalent to £8 a night)  
Full glazing service included at a cost of just 50p per item.

We have 6 modern potters wheels and each student has their own wheel.  
**No sharing.**

For details please ring 01305 788278 or 07868726296  
See website at [www.hundred-aker-woodpottery.co.uk](http://www.hundred-aker-woodpottery.co.uk)  
or email [david@hundred-aker-wood.freemove.co.uk](mailto:david@hundred-aker-wood.freemove.co.uk)

## Beauty and Massage Therapy

For all of your beauty and massage therapy requirements  
contact Jo at

# Spoilt Rotten

Treatments for both ladies and gentlemen include Swedish Massage, Waxing, Manicures, Pedicures, Makeup, Facials, Airbrush Tanning and many more procedures.

Fully insured and qualified treatments

**Telephone 01258 837014**

Stag House, The Square,  
Milborne St Andrew, DT11 0JF

# A P K

## Kitchen and Bathroom Installations

*Wet Rooms, Special Needs Bathrooms,  
Wall and Floor Tiling, Plastering,  
Laminate Floors.*

**Call for a free quotation**

Telephone: 01202 716877

Mobile: 07596 918269

Email: [a\\_p\\_k@hotmail.co.uk](mailto:a_p_k@hotmail.co.uk)

# WHISTLEJACKET

## EQUINE VETERINARY SURGERY



Based in Milton Abbas our services include:

- Routine small animal work
- Modern Operating Theatre
- Knockdown/Recovery complex
- Fully Equipped Laboratory
- BEVA approved centre for Artificial Insemination
- Arthroscopy
- Radiography
- Ultrasound
- ECG
- Endoscopy
- Shockwave Therapy
- Dentistry
- Riding School Inspection
- Worming programmes and worm egg counts

We also provide a 24 hour EMERGENCY service

tel: 01258 881 777

24 hr Emergency tel: 07000 944 785

fax: 01258 881 778

[www.whistlejacketvet.co.uk](http://www.whistlejacketvet.co.uk)

email: [whistlejacketequine@hotmail.co.uk](mailto:whistlejacketequine@hotmail.co.uk)

An integral part of our rural community



## LETTERS TO THE REPORTER

### 'Townies' and residents of Milborne St Andrew

I wonder who the some townies are, that June Maitland is referring to in issue 6 of the Reporter that she says she would like to change.

By using the word some she has made anyone who has not lived in the village for as long as her to feel it could be them. This would apply especially to those who have embraced the village, and are getting actively involved in the many wonderful, old and new activities that are now available for all the inhabitants of our village to benefit from. I can only assume that it must be some of the newer activities that do not meet with her approval. Which would she most not like to see not running?

For example would it be Ladybirds, which runs every day in the school terms, for the benefit of all the villagers and, I believe, was the result of a lot of very hard work of some of new inhabitants [The so called Townies] there was no self interest for one of these so called Townies, as he has no children of an age to benefit from it.

There are many wonderful clubs and societies etc, that are available to all the inhabitants of our village, which are only successful because of they are run and well support by a cross section of *Milborne's inhabitants*.

Please don't let anyone change that, *it's the inhabitants of anywhere who make it what it is*, and we should be very grateful and proud that our village is so proactive.

John Gipps

I read the July/August edition of the Reporter with interest, but was taken aback by the comments made by June Maitland regarding 'Townies'. *Being born in London both my wife and I must certainly be classed as 'Townies'*. We moved here 10 years ago to make it our home and felt that in that time we have *made, like many other 'Townies' who have moved here, a positive contribution to village life. Indeed many of the groups and societies, which go to making the community spirit of this village so good, are as a result of 'Townies' running or participating in them. Just a look at the*

community contacts page in the Reporter magazine will show how positive an *impact we 'Townies' have had on the village*. Change will happen, it is inevitable, what matters is that change should be tackled sensitively and be for the benefit of all the community. Comments such as the sweeping statement from June just go to divide the community. Elaine and Peter Anthony

*Being a so called townie (although I've been in the village nine years) I found June's comment a little sad. As Christians aren't we supposed to love our neighbours!*

Also whilst I cannot claim to do much in the village apart from supporting a few events, it seems to me that a lot of the movers and shakers that put on events and raise funds for the village are the so called townies. C'mon June give us a chance most of us do try and integrate. Chris Nowell

Does Mrs Maitland think that everyone *who moves into this village is a 'Townie'*? I, like her, was born in a large town but have then lived in a village for most of my adult life. I note that she is from Bournemouth - *doesn't that make her a Townie too*. And - *what is this 'rural life' that she doesn't think should change and who changed it anyway; the Townies, the farming community or the country landowners?*

It is inevitable that change will happen and who has the right to say who makes *those changes and who doesn't*. What does it matter where people come from? Surely the most important thing is that they want to be part of a community, and to make life better for themselves and those around them.

Since living in this village, it would appear to me that it is the so-called newcomers that keep all the societies going, and those people that have lived in *this village for most of their lives don't want to be involved*. If Mrs Maitland *doesn't want to get involved with the village then it is easy - just don't get involved - stay at home, then you won't have to encounter anyone else in the village, especially TOWNIES*. Name and address supplied

*I am a "Townie" as mentioned in the last edition, and moved here from a busy, noisy, untidy, un-friendly large town some nine years ago.*

Can I just say that I did not come to *"change" the village way of life* - I came to embrace, enjoy and respect it. I came to walk in the beautiful countryside, to integrate with the village residents and to be amazed by its friendliness and will to succeed. Some of us Townies do not want anything changed but understand the

need to move forward as well - so please *don't tar us all with the same brush!*  
Melva Coe

Grumpy B

It is one thing (OK) for Grumpy B to look at life from the flip side but quite another to join the merry band of whiners we seem to have around us. On this occasion Grumpy is completely out of touch with reality and offers no real solution. She is *obviously not a 'local' or she would have known about Sargents Dairy and would have given a plug for a 'local' Dorset dairy, delivering local milk and other produce to our doorstep*. Take a walk around the village between 4 and 6am and you might spot the fastest milk cart in the west.

*The milk is fresh and certainly won't last the week that the inferior supermarket stuff does*. 01305 784284 for your fresh pinta is what old Grumpy should have reported.

However we do live in an age where things have changed. I expect that you could count on one hand the number of people now living in the village with the *occupation tag 'Agricultural Operative' (taken from the back of a tractor not a Dustcart!)*. Mechanised farm machinery (including the obligatory Range Rover Vogue) has driven the hordes of lowly paid agricultural workers, complete with doffed cap and the obligatory straw in mouth into more highly paid jobs and a better standard of living.

### **A possible solution to Grumpy B's problem**

I suppose one solution would be for the Parish Council to invest in some inflatable cows, Court offenders on Community Pay-back could then be used to blow the things up and keep moving them around to make the whole scene idyllic.

It would not be the usually quoted *"drain on the ratepayers"* because those on unemployment benefit could also be conscripted into a modern day Land Army and forced onto the land to work for peanuts.

Yes we do live in a rural community but in modern times and we love it, even the itinerant townies do. Why move here *if you didn't and yes it is important to make life easier, safer, comfortable and more locally sustainable?* So come on Grumpy, stick to what you are good at looking at life from the flip side with your tongue firmly in your cheek. And one more thing!

Why was it necessary for the Village Hall to pander to negative public reaction by *taking down the People's Millions Cheque for £50,002.00 just because it stuck in some people's craw that a positive achievement was being highlighted?* We *all voted for the bid . . . didn't we?*

Name and address supplied

The background of the poster features three black silhouettes of people in various line dance poses against a light grey background. The silhouettes are positioned behind the text, creating a layered effect.

# ***ABC STEPPIN IN LINE***

**LINE DANCE CLASS FOR BEGINNERS**

***FUN AND EXERCISE FOR ALL AGES***

**STARTING TUESDAY 8TH SEPTEMBER**

**FROM 7.30 TO 8.30**

**AT**

**MILBORNE ST ANDREW**

**VILLAGE HALL**

**ENTRY £2.50 PER PERSON**

**CONTACT BOB AND CAROL ON**

**01305 852026**

# Village Hall Trustees go ballistic

NO, this has nothing whatsoever to do with the recent abuse of the under 12's play equipment at the rear of the hall by the usual group, (damage to the tune of £700 this time!); the underage drinking and indiscriminate litter dropping on the playing field, or the young men who for some reason see the need to hang around the same under 12's children's play equipment and use it as some form of macho assault course training. We don't pander to the 'lowest common denominator' approach to life, if we did, nothing would get done. This is about the positive improvements being made to the Village Hall facilities for the benefit of the majority of people within the community.

Double Lottery winners

We must be in a pretty unique position of having two Big Lottery grants running at the same time. Currently we have the following grants in motion: £51,002.00 'People's Millions': £9,500.00 Big Lottery 'Awards for All': £16,000.00 'Playbuilder Scheme' (Children's Play equipment) and now £46,500.00 from the NDDC 'Liveability Board'. Anyone out there good at arithmetic?

So what does all this mean at a time when we are constantly being told that funding streams are drying up? Well, if you one of those who rolls over and gives in at the first opportunity; if you don't like progress; if you are of a mindset of "oh it will never happen in Milborne"; and you are not actively promoting and trying to achieve improvements for the village - THEN DON'T READ ON!

The Trustees adopt a 'we can do' positive approach to the management of the Hall and are working to achieve the outcomes of two Village Hall surveys conducted in the village and very soon, the outcome of the Parish Plan. We will help user groups whenever we can and indeed helped the Scouts achieve their funding of £500 through the Grassroots Grant. Well done Mike and Sue and Co.

So what is happening?

Well, like a swan, most of the work to date has been going on out of sight but no more. A shell of an extension to the committee room and the main hall has now appeared and this will drastically increase the versatility of the Hall. It will have it's own toilet and kitchen facilities and the capability to store the tables, chairs and staging in the main hall if so required, be used as an anti room for either the main hall or the committee room or even as a small meeting room in it's own right! New floor coverings will be provided in the committee room and the new anti room and there should be sufficient power sockets to fit even the most demanding user requirements.

The ceiling over the stage at the rear third of the Hall has been raised and this has been such a success that A4A money is to be used to raise the remainder. So there will no longer be a need to duck when you enter the main room! New advertising 'A' boards are to be provided for users to promote their events. Still to happen in the main hall is the triangular trussing across the width of the hall and two spurs linking the rear wall required for stage curtains, lighting and side staging. To some this may look like a Mick Jagger stage set but it will be a great asset to the Players productions, fashion shows and visiting performances by Arts Reach etc.

At the back of the main hall a 'shed' has appeared but this is no ordinary shed. With a hole knocked through into the Gents toilet this is a larger space than first appears. It houses the controls for the sophisticated audio, lighting, hearing loop facilities and with the front cover removed you will see the strained faces of two 'production/sound/lighting engineers' beaver away behind a glass screen in a darkened room. But eyes front, you should be watching the production. For everyday use, a simplified audio, lighting hearing loop control system will be in place and capable of being used by any group. Nice one!

Largely undetected has been the major upgrade to the electrical system of the Hall which has resulted in a reinstatement of the

3-phase supply (required reading for the sparkies amongst you) a new fuse box and a massive tidying up of the cable runs which had grown like topsey over the years. So we have a much safer Hall, and warmer too with the replacement of the not so old gas boiler that gave up the ghost recently.

The old external paintwork (where it still hung on for grim death) has been removed . . . have you noticed the bricks? Well even though they might look appealing to some the walls are to be rendered and made waterproof. The scaffolding at the front of the hall is for the fitting of the cedar panelling to the front gable end and the old sign will be entombed in a sort of time capsule for people to marvel at when the Hall eventually falls down or is replaced with a brand spanking new one!

Outside, work is due to start on the developing of the wild flower meadow on the top field so a few diggers might appear on the horizon and new Children's play equipment is in the pipeline, quite literally. With the help of the NDDC Sports Officer, the trustees were successful at obtaining a grant of £16,000.00 from the Government Playbuilder Scheme. The equipment must be targeted at the over twelve age group and had to be chosen by the children themselves. A consultation process was undertaken and as a result a tube slide on the bank was one of the options chosen. But by far and away the most popular piece of kit was THE ZIP WIRE. As the name suggests it is a 25m aerial wire between two sets of tripods and quite simply you zip from one end to the other. Sounds like fun! We are now in the procurement stage and things should start to happen quite soon.

How many fences do you need anyway?

This new equipment will be outside of the existing fenced off area because modern thinking within the Play Industry is that you do not have a fenced off play area within an already fenced off area. In this way the play equipment can be spaced out (man) rather than crammed in to one small and out of sight space. The issue of fencing is an issue currently under active review by the trustees but for informed opinions the Dorset Community Association has a Play area supremo who will confirm this is not some 'tosh' being foisted on the community.

B Happy

Last by no means least is the NDDC Liveability grant of £46,500.00 for a multi use games area or MUGA. The People's Millions bid was called MADCAP, this one was called "B-Happy" and we are and so were the Liveability Board. The feedback we have had is that this project scored nearer the highest and the board liked it. We understand that other local bids were refused as the Board felt that the B Happy project is more valuable to more people generally, and is actually in the heart of the village.

The support of the Parish Council will be actively sought as we move through the planning process and start to make things happen but hopefully the MUGA will be big enough to play recreational tennis, basketball, volleyball, 5-a-side football, cricket, etc ON AN ALL WEATHER SURFACE all year round. Definitely a bonus and having had a 'peek' at the initial findings of the Parish Plan, well in line with the aspirations of those who took the time and effort to complete the questionnaire. What was particularly illuminating was that even timed recreational lighting was well supported even though elsewhere in the Parish Plan, street lighting was blown out of the water. So who knows, children and adults using the recreational MUGA facilities at 5pm on a November evening, weather permitting might just happen!

**That's all for now folks**

Phew, this is exhausting work, but enjoyable. For those of you that have made it this far, just a reminder that the next Moviola is LAST CHANCE HARVEY with Emma Thompson and Dustin Hoffman on the 2nd October but there is unlikely to be any supper available. "Is there a Cook in the House?"

*Richard Lock* on behalf of the Trustees of the Village Hall

# Relocation of Dog/Litter Bins

AFTER discussions between the Parish Council and North Dorset District Council officers, it has been suggested that some of the dog/litter bins in the village would be better used if they were relocated. The suggestions are as follows:

The dog waste bin at the entrance to The Rings is not often used and it could be moved down Blandford Hill to a location opposite The Old Bakery.

In Coles Lane, one bin is felt to be sufficient and the other could be relocated to double up with the one already by the Church at the Chapel Street/Church Hill junction.

The litter bin at the top of Blandford Hill at the walk through from the old carpark opposite the industrial site is not being used and it is proposed to move this to the parking bay at the bottom of the hill – outside the telephone exchange.

Also, the site for a replacement bin for the one that was burnt out some time ago in the Square is being considered and it is likely that a new bin will be provided on the corner of Milton Road.

It is hoped that these moves will help to improve the litter and dog waste problems in the village. If you have any comments, please contact the Parish Clerk, Colin Fletcher, 01258 450639.

Geoff Cherry is standing down as the Parish Tree Warden, after many years of sterling service.

This Parish Council has been shortlisted in their bid to get funding for new "street furniture".

Londis – Tony Lages has agreed to put white lines in his car park, in order that more cars will be encouraged to park off road and avoid possible accidents and congestion.

Funding for play equipment (Village Hall) for 8–14 year olds is progressing. Using the bank where possible, the idea is at present for a zip wire and other equipment. This has to be a community decision, and all village youngsters are asked to put forward their ideas, as the choice is down to them. The project has to be "done and dusted" by October 2009.

Sports Field – a container is to be used to store large maintenance equipment, it will be painted green, and hid with evergreens. Investigations are to take place as to what is happening with the "kick-about" pitch.

A question was asked about what is legal or illegal parking? And where should it be enforced. The question came up when talking about vehicles parking partly on the pavement, and questioning if it was sensible to enforce, when it was making it safer for vehicles travelling on the road.

The "Best of Dorset" Music Festival was commented on, and the consensus was that the village wouldn't have known it was going on!

The Parish Council is to approach the Village Hall Committee, with the view that they should have occasional joint meetings to be able to work collaboratively for the good of the village.

The dates of the Parish Council Meetings will be sent to the MSA Reporter for inclusion.

Finance

A quote of £170 has been entered for the Willow Tree to be cut.

The PC Insurance has just been paid for the year (£262.50 – a saving of £60 from last year by changing provider).

The MSA Reporter has repaid the start up grant of £250.

## Parish Council Meeting 24th June

TWO dog bins can be relocated, and they will be, but not sure when! The Dog Poo situation has improved at the present, the light mornings and long light evenings may be the reason (as people can be seen). Therefore any idea of using a dog warden has been shelved for the time being.

Blandford Public Toilets were vandalised on the day they opened.

PC Mullins did the speed check on 25th June at 7.30am, a couple of brave souls accompanied him when they set up at the bottom of Hopsfield, on the Milton Road.

# R & O Ball & Son

Londis Stores, High Street, Puddletown Tel: 01305 848235

Your Local Family Shop

Open 7.00am to 8.00pm Monday to Saturday, 9.00am to 4.00pm Sundays



Fresh Bread



Quality Family Butcher



All groceries  
Greetings Cards, Stationery,  
Pretty Polly Hosiery, Seeds,  
Batteries, Films, Cash Machine  
Agent for PENDOVE Dry Cleaning  
Laundry, Shoe Repairs, Video Club



Newsagents



Off licence



Tel: 01305 848526

Quality Assured - Deliveries Arranged

POST OFFICE

Open 9.00am to 1.00pm, 2.00pm to 5.00pm Monday, Tuesday, Thursday, Friday  
Wednesday and Saturday 9.00am to 12noon

Personal Banking Services for:

Alliance and Leicester, Barclays, Lloyds, Co-op, Cahoot, Bank of Ireland, Bank of Scotland, Clydesdale, Halifax, Nationwide, Northern Bank, Nat West (Step Account) and HSBC (Basic Account)







## Cheselbourne Theatre Club



Our AGM is on Monday 21st September at Cheselbourne Village Hall at 7.30 pm. Please come and support your club, air your opinions and enjoy the refreshments after the very short business meeting.

There may be some places available for the following plays: The Lady In The Van by Alan Bennett on 14th September and After Miss Julie, a version of Strindberg's classic play by Patrick Maber on 19th October. Please phone Ann if you are interested.

We now have to book for Arsenic And Old Lace by Joseph Kesselring on Monday, 16th November. This perennial favourite tells the gentle tale of two charming old ladies who poison their lodgers so that they might be spared the pains of earthly life.

If you haven't already done so, please phone Ann by 16th September to reserve your place for this play.

Ann Allum, chairman 880074; Stephen Terry, treasurer 881524;  
Chris Higgs, secretary 880073

## Wine Tasting and Quiz

MATCH (Milton Abbas Trust for Community and Heritage)

**MATCH and St. James's Fundraisers will be holding a Wine Tasting and Quiz on Saturday 26th September at 7.30pm St. James's Church.**

We welcome you to an evening of Fine Wines, tasty nibbles, good company and a fun quiz with prizes.

Tickets will be available in advance at The Post Office, Milton Abbas, or at the door. Further information from John Holden 01258 881685

## Grumpy B is on holiday

(having a miserable time)  
Back next month

## Winterborne Bakery to reopen

WINTERBORNE Bakery at Winterborne Kingston is reopening on Saturday 29th August 2009 at 9am.

My partner, and our head baker, Matt had a dreadful boating accident in July and broke his back. I am pleased to say that he will make a full recovery in due course, but at present he is out of action. However, I have been able to recruit an additional full time baker, Scott Richards, to join our team, and we will be recommencing production of fresh bread, cakes and pastries. The bakery sales counter will be open from 10am – 1pm Tues to Fri and 9am – 1pm on Saturday.

Our Poundbury shop will reopen on Saturday 5th September, and will then open Tues – Fri 9.30am to 3.30pm and Sat 9am to 2pm.

We have a growing home delivery service which includes Milborne St Andrew.

Customers can download the September product range from [www.winterbornebakery.co.uk](http://www.winterbornebakery.co.uk) and can call 01929 471966 to place orders.  
Andrew Kitchenham

## Can you remember 1976

THE scorching hot summer and drought of 1976 is the backdrop for a new novel being written by Christine Francis. The story is set in Milton Abbas, which had the country's longest spell – 45 days – without rain during that period. The story of the reunion of two estranged sisters, one living in London, the other in Milton Abbas is played out during this difficult period for the area's farmers.

Christine would love to hear from anyone from the area who has strong memories of this time. She would especially like to hear from farmers and agricultural workers who remember the difficulties the Great Drought brought to the land. She can be contacted on 07980 058104 and email [francwriting@hotmail.com](mailto:francwriting@hotmail.com) or alternatively contact the Reporter.

# COLIN J. CLOSE FUNERAL SERVICE



*A family run business,  
serving the local community of  
Blandford and surrounding district*

CHAPEL OF REST  
PRE-PAYMENT PLANS

24 HOUR SERVICE  
MEMORIAL MASONRY

**PEEL CLOSE, SALISBURY ROAD, BLANDFORD**

Tel: 01258 453133

Email: [info@close-funeral.co.uk](mailto:info@close-funeral.co.uk)

*Also at Cemetery Chapel  
Sturminster Newton*



[www.grassby-funeral.co.uk](http://www.grassby-funeral.co.uk)



## P J AIKEN LIMITED

INDEPENDENT FINANCIAL ADVISERS

4 Trinity Street, Dorchester, Dorset DT1 1TT

Telephone: Dorchester (01305) 266676

Fax No: (01305) 251569

advice@pjaiken.co.uk

### Specialists in:

Financial Planning

Investment Advice

Inheritance Tax Planning

Pensions and Retirement Advice

Life Assurance

Health Protection



*Security is Strength*

P J Aiken Limited is authorised and regulated by the Financial Services Authority

## ***P.N.GRAY***

### ***ELECTRICAL CONTRACTORS***

***AGRICULTURAL - DOMESTIC - INDUSTRIAL***

***ESTABLISHED OVER 50 YEARS***

ALL ELECTRICAL WORK UNDERTAKEN FROM  
INSTALLATIONS TO MINOR WORKS

INSPECTION AND TESTING - REWIRING AND  
MAINTENANCE

FULLY ENROLLED WITH THE BRITISH STANDARDS  
INSTITUTE FOR SELF CERTIFICATION AND  
BUILDING REGULATION PART "P"

GIVE US A CALL FOR A FREE NO OBLIGATION  
QUOTATION OR JUST SOME FRIENDLY ADVICE

**TELEPHONE: 01258-837354/01258-837270**

**MOBILE : 07774-838851**



**E-MAIL : sharongray@talktalk.net**

# Athelhampton *House & Gardens*

Visit one of the outstanding  
historic Manor houses of England  
and explore the magnificent interiors.

Set in the World famous,  
architectural Grade 1,  
gardens by the River Piddle.



Open Sunday - Thurs,  
2 Mar to 29 Oct.  
Nov to Feb, Sun only.  
Accompanied  
children under 16 Free



### *Weddings & Private Functions*

The house, gardens & catering facilities offer  
a high quality venue for weddings,  
receptions, private and corporate events.  
(Civil Marriage Licence held).



### *Luncheons & Cream Teas*

Our Topiary Restaurant serves morning  
coffee & pastries, lunches and afternoon tea &  
cake, everything made using locally sourced  
fresh ingredients. We offer a specials menu  
board, table service and a licensed bar.

*Sunday Luncheon* - Choose to dine  
either à la carte with full service, or sample  
our Carvery. Served throughout the year.



*Booking & info telephone: 01305 848363*  
*enquiry@athelhampton.co.uk*

*www.athelhampton.co.uk*  
*Athelhampton, Dorchester, Dorset DT2 7LG.*

# MILBORNE ST. ANDREW FIRST SCHOOL



Learning together, playing together;  
all for one, one for all

## SCHOOL NEWS

### The beginning of an Era: A new Headteacher



I am so delighted to be taking over as Headteacher from September 2009, and would like to join all in offering my best wishes to Tom Leech on his retirement and thanks for his hard work and dedication as Headteacher.

I join Milborne St. Andrew First School in September 2009 from a large community primary school in Norfolk where I was Deputy Headteacher. In addition to my post as deputy I had specific responsibility for the Early Years Foundation Stage and Key Stage One. I am

married with three grown-up children and one grandson and am originally from Yeovil in Somerset.

I've previously worked at Emneth Nursery School and Children's Centre as a Assistant Headteacher and Head of Inclusion specialising in Early Years Communication, working closely with multi-agencies and the local community.

I am also passionate about involving children in outdoor learning practices such as 'Forest Schools', and in addition very much enjoy taking part in research. Leading and working with others towards finding out about how children learn motivates me – especially if it involves making it more enjoyable. For example, in 2007, as part of a team working for Malawi Education Link, I travelled to Malawi with eighteen Year 10 and Year 11 pupils from Marshland High School, where I had the opportunity to teach in a rural primary school and was openly welcomed into that local community and Ngala Primary School.

OFSTED confirmed this year that Milborne St. Andrew First School is an outstanding school in which pupils make excellent progress in both their academic and personal development. I am

delighted to have been made to feel very welcome already as the newly appointed Headteacher, by all in the school and the local community. I look forward to getting to know all of the pupils and parents, working with the talented staff, governors and Friends of School, and using my skills and experience to maintain the high standards achieved. Although my availability will be slightly limited, as I will have a daily teaching commitment, I look forward to further developing new and already well established close community links.

*Anne Purdy*



*Here I am on my visit with Malawi Education Link to Ngala Primary School, Dwanga, Malawi, Central Africa*

## CONTACTS

If you require any information about the school, including admissions details for children please contact the school office.

Headteacher: Mrs Anne Purdy, Secretary, School Office: Mrs Helen Pugh

Chair of Governors: Mr George Legg, FOS Chairman: Mrs Sally Taylor

e-mail: [office@milborne.dorset.sch.uk](mailto:office@milborne.dorset.sch.uk) website: [www.milborne.dorset.sch.uk](http://www.milborne.dorset.sch.uk)

Tel: (01258) 837362 Fax: (01258) 837170

**Queen Thorne**  
LANDSCAPES  
RHS CHELSEA SILVER GILT  
[www.queenthorne.co.uk](http://www.queenthorne.co.uk)

**Purveyors of the Finest Gardens**

**01935 850848**

**Extend your home and maximise  
your outdoor space**

Consultation  
Design  
Construction  
Ground Preparations  
Water Features  
Turving & Seeding  
Planting  
Renovations  
Wild Flower  
Meadows  
Lawn Care

As seen on the **BBC**



# MOSAIC

## Dorset Wide Support for Bereaved Children, Young People and their Families

MOSAIC held their first Residential Weekend on the 11th/12th July at Leeson House, near Swanage.

The 21 children aged between 5 and 17 years attended the weekend, taking part in fun activities and meeting others who had experienced the death of someone close to them, a parent, sibling or grandparent.

During the weekend they told each other their story of what had happened and remembered the special person by making memories and lighting a candle.

They made new friends and received a Mosaic T shirt and teddy.

The parents also met other parents and Mosaic has received some lovely letters and words of thanks.

*'My daughter does not feel the 'odd one out' anymore*

*'On the way home my son talked about his dad for the first time  
in 4 ½ years'*

The weekend ended with each family releasing a balloon with a message tied to it. We are currently planning our next weekend for October.

We are always looking for volunteers to help with fundraising or to train to help at residential weekends. We are holding an Open Evening

on the 15th September from 6.30–8.30pm at Barnes Croft, Coles Lane, Milborne for anyone who would like to find out more about what we do and how they can help.

Our next fundraising event is a Ladies Afternoon Tea at the Haven Hotel, Sandbanks, Poole on the 30th September.

If you would like more information, please contact Margaret on 01258 837071 or email [info@mosaicfamilysupport.org](mailto:info@mosaicfamilysupport.org)

## Wednesday Social Club Summer Fun

July Val and Dave Andrews kindly made available their garden for the club's annual Cream Tea. We had an amazing turn-out, the weather was fantastic and so were the scones, jam and cream. It was a successful happy afternoon and from the proceeds of the entrance fee, £75.00 was donated to Mosaic.

August Mystery Trip. We had a full coach and thanks to Brian our driver, we had a beautiful evening drive around the New Forest and stopped off for supper at a pub between Ringwood and Christchurch. Once more amazingly, the weather was warm and sunny.

September 2nd Mystery Trip leaving Stileham Bank at 5.20pm Cost £6.00 members, £7.00 non-members. Food extra. Tel: Margaret Evans 01258 450518.

October 7th Start of our Autumn/Winter Programme in the village hall stating at 2.30pm. All welcome.

Peter Lindsley of Age Concern and other allied agencies will be coming to explain the work that the charity does and the benefits and services that are available to the over 50's.

Margaret kirk



**New Image**  
Unisex  
Hair Salon

ghd  
a new religion for hair

WELLA  
PROFESSIONALS

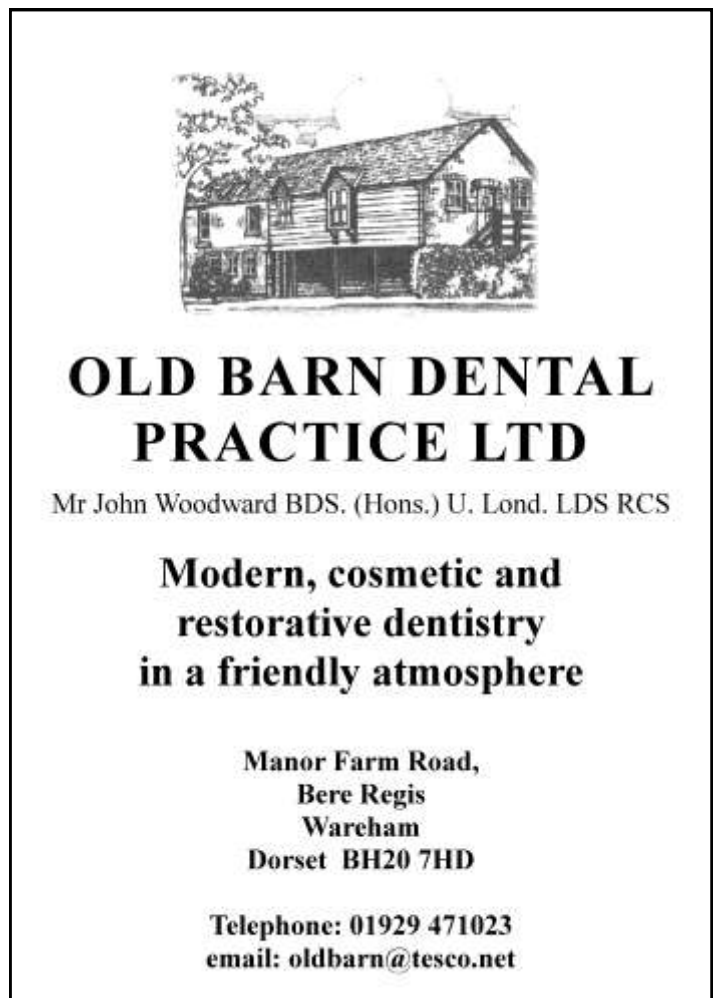
31 North Street  
Wareham  
Dorset  
BH20 4AD

01929 556933

**WANTED**  
**PROPERTY TO RENT**  
in Milborne St. Andrew or Surrounding Area  
for at least 6 months

One or two bedrooms and happy to provide  
TLC to "character" property

Please contact Jo Perry on 07790 043815 or  
email: [baronthecorner@hotmail.co.uk](mailto:baronthecorner@hotmail.co.uk)



**OLD BARN DENTAL  
PRACTICE LTD**

Mr John Woodward BDS. (Hons.) U. Lond. LDS RCS

**Modern, cosmetic and  
restorative dentistry  
in a friendly atmosphere**

Manor Farm Road,  
Bere Regis  
Wareham  
Dorset BH20 7HD

Telephone: 01929 471023  
email: [oldbarn@tesco.net](mailto:oldbarn@tesco.net)



## Smiley John Sweep

For a fast efficient service call  
**Mobile 0781 646 7975**

## Blanchards Bailey <sup>LLP</sup> Solicitors

- Wills, Trusts and Tax
- Family Law
- Personal Injury & Litigation
- Buying & Selling your home
- Elderly Clients' Services
- Commercial Property
- Mediation
- Commercial Law
- Employment Law
- Educational Law

**Bunbury House, Stour Park, Blandford Forum,  
Dorset DT11 9LQ**

**Tel: 01258 459361**

**Email: [bunbury@blanchardsbailey.co.uk](mailto:bunbury@blanchardsbailey.co.uk)**

Also in Dorchester and Shaftesbury  
**[www.blanchardsbailey.co.uk](http://www.blanchardsbailey.co.uk)**

# WORKING TOGETHER **PACT**

## Partners and Communities Together

BLANDFORD PACT PANEL – TOWN AND RURAL

NEWSLETTER NUMBER 3 – JULY 2009

Public Meeting 7th July 2009

The July public meeting saw more members of the public attending than ever before. An audience of 46 heard Safer Neighbourhood Team members and representatives from partner organisations outline the positive steps taken to help mitigate problems.

The new Town Issues voted for action over the forthcoming quarter were:-

- Speeding in Holland and Jubilee Way (188 votes)
- ASB in Salisbury and Bryanston Street (29 Votes)
- Litter in East Street (7 votes)

PC Dave Mullins went on to detail action taken on earlier issues and list the new rural issues for the period July – October 2009. These are all related to speeding and irresponsible driving in Pimperne, Iwerne Minster and Milton Abbas.

A number of speed checks in many areas have been carried out and will continue.

A PACT 'engagement' BBQ was held on Friday 31st July at Blandford skate-park. The BBQ was organised by PC Simon Evans and Melissa Fear (NDDC) in response to concerns raised by Blandford School children in a mock PACT meeting. The year seven pupils decided, in a majority vote, that the biggest concern that they had about their community was anti-social behaviour and underage drinking at the skate-park, which meant that they often felt too intimidated to go and use the facility.

A whole host of agencies attended the event which included Connexions, Shadows, Sexual health screening service, Dorset Police, Dorset Fire & Rescue, DT11 youth forum and Blandford Youth Club. Agencies in attendance were able to offer the young people practical advice and support about any concerns that they had. In addition to the BBQ a mobile climbing wall was also on offer and provided a great challenge and entertainment for the youngsters.

The event was a great success and it is estimated that around 75 young people turned out for a free burger and a chat with local agencies.

## Fair Trade in our village

IF you belong to one of the many clubs and societies in our active village, have you stopped to consider how those welcome cups of tea and coffee are sourced? Fair Trade suppliers pledge to ensure that the primary producers of tea, coffee and other products are paid a fair wage for their efforts. This in turn provides resources for poor families and communities around the world to invest in their own development.

A new Social Justice Group in Milborne St. Andrew will be encouraging all village organisations to adopt a Fair Trade policy for sourcing of their supplies where possible.

Besides focussing on global and international issues, the group will also highlight local concerns. These could include for example support for local charities and promoting volunteering in our community. The group is also keen to stimulate wider discussion of the challenges of working with the disadvantaged, the socially excluded and hard to reach groups and families.

The Social Justice Group welcomes those who would like to raise awareness and become more active locally on these issues. The group will be supported by the PCC and is open to all.

The contact for this group is Eric Austen: [austeneric@yahoo.co.uk](mailto:austeneric@yahoo.co.uk), telephone 01258 837213.

*Charlotte Seymour-Smith*

# Milborne Sports Club

# Autumn Ball

Dress code Black Tie

Friday 25th September  
Athelhampton House  
7pm until 1am

3 Course Meal, Auction, Champagne Draw

Entertainment provided by  
Dynamic Duo



★ *Sapphire* ★  
£35 per person

For Tickets Contact Mike Handley on 01258 882118

Proceeds to go to Milborne Sports Club and Local Charity  
Registered Charity No. 1091790





## Milborne Sports Football Club

DURING the post season first team manager Paul Hammond has been moving to strengthen the squad following the success last season in being promoted into league division II.

Paul will be looking to repeat another promotion while reproducing the unique football of the previous season.

**Most of last season's players have signed and have played their first friendly which was on 4th August against a very strong youthful Poole side. Milborne matched their much higher league opponents for the first twenty five minutes but were unfortunate to go into break 2-0 down. Being their first game, Milborne were looking to give all players in the squad an opportunity and although finishing up well beaten this was after the formation had been changed in the second half almost entirely. There were good performances throughout the team who continued to look to play the attractive football that is becoming a feature of the Milborne sports game.**

Against Cranborne and against much higher league opposition we came out on top with a narrow victory of 2-1. In what proved to be splendid fare for watching spectators Milborne gave a very impressive display with controlled football. Paul Myatt gave them the lead with a delightful chip over the keeper from about 25 yards that nestled in the bottom corner. Cranborne equalised with a disguised drive from the edge of the penalty area that home keeper Gifford was unable to reach. With the score 1-1 at half time Cranborne were possibly favourites to win but the Lanenders worked hard to stay in the game and despite several changes kept the same pattern of play. They were rewarded when Gifford, now playing up front for the second half, powered in to the heart of Cranborne's defence before setting up Carl McLements to slot the ball home. With even tougher friendlies lined up Milborne will be looking to continuing focusing on their style of play rather than worrying about results until the season starts.

### Reserve Side

A reserve senior team has been formed and will be playing in Dorset league IV under the leadership of stalwart Andy Draper. The team looks like having a good mixture of youth and experience and friendlies have been lined up at the time of writing.

It is particularly pleasing to see a number of villagers playing in this reserve side and especially pleasing that the three players who have developed through the Milborne youth system have now made it to the adult squad.

### Off the Field

Progress continues with the training pitch well under way and hopefully this will be ready for use by the time autumn approaches. **We are particularly grateful to Prince Charles' Duchy of Cornwall for their generous assistance in helping us prepare this training area.**

### Youth Football

The two youth teams are very able managed with long term Milborne stalwart Daryl Sims now managing the under 11s and Grant Taylor the under 15s. It is particularly pleasing to note that Grant Taylor has been awarded Dorset Football Association Manager of the Year for the second year running. Grant comments that this award reflects on the whole club as it is the back-up he receives from his fellow coaches and committee that have caused Milborne to have such a great reputation in the area.

### Spectators Required

The facilities at Milborne are some of the best in Dorset. Groundsman, Malcolm Applin, is rightly proud of what is an

outstanding pitch. With a superb pavilion available for spectators in bad weather, Milborne are keen to see more local supporters at their games where true fans are always assured of good football and a friendly welcome.  
*Mike Lathbury, Chairman*

## U11's Youth Football Open Mornings

Every Saturday from 1st August 2009 from 10am to 11am  
At Milborne St. Andrew Sports Pavilion

CURRENT and new players are invited to join Milborne Sports Youth section. We are currently looking for new players to join our **U11's team for the 2009/10 Dorset Mini Soccer League Season.** Boys and girls of all abilities are welcome. Just turn up!

If you would like any further information, or wish to register now, please feel free to contact Darryl Sims on 01258 881397

FA Chartered Club of the Year 2008 to 2009 – Dorset & South West Region.

Milborne Sports is a community club with a simple aim: for football to be fun and inclusive for boys and girls of all age, background and ability, whether at training or at matches.

## Wanted – Badminton players

BADMINTON starts again at the First School on Wednesday 9th September from 7 to 9pm. We are currently looking for male and female members over the age of 18 to join us. Our age range at present is between 18 and over 65. We play doubles and the cost is just £2 per week plus insurance to use the school. Beginners welcome. Just come along on a Wednesday and join in. *David Payne*

### 100 CLUB WINNERS

Draw Date – Monday 29th June 2009

1st prize	£100	Shirley Dunkley
2nd prize	£50	Dave Hall
3rd prize	£24	Maurice Fox

Draw Date – Monday 3rd August 2009

1st prize	£100	Pip Howell
2nd prize	£50	Pat Bull
3rd prize	£22	John Miller

Drawn approximately every 5 weeks.

Next draw on Monday 7th September

New members always welcome

## Milborne 100 Club JOIN NOW

Please make your subscription cheques payable to "M.S.A. F.C." to any of the following:

John Kane 837108; Pat Tribe 837684;  
June Maitland 837235; Brian Pitman

Proceeds shared equally between  
St. Andrews Church and the  
Milborne Football Club



# The Hambro Arms

Milton Abbas, Dorset

## Forthcoming Events

### Gourmet Evening – Saturday 12th September

After the Summer break, why not sample one of our Gourmet evenings, they have had fantastic reviews over the past year. This promises to be another very special evening. Why not get a group of friends together. There will be five mouth-watering courses, with fine wines included in the price to accompany each course. All five courses with fine wines only £39.95.

Please avoid disappointment by booking early.

Advance Reservation only

### Indian Evening Friday 25th September 2009

Crudités followed by a selection of 4 Indian dishes all served with boiled or Pillaow rice and chapatti Bread

As much as you can eat for only £11.95

### Creole Evening Saturday 17th October 2009

Our Chef will be creating an authentic Creole evening which will include a choice of 3 starters, 4 mains and 3 desert courses.

All courses for only £21.95. So why not treat yourself to something different. Advance Reservation only

### Food Service

Our normal menu will be available on the Friday and Saturday evenings. On Sunday we will be serving our normal Sunday lunch.

### Gourmet Evening

Saturday 12th September at 2009 8pm

#### To Begin...

An Assiette of Canapés

#### Antipasta

A platter of salami, olives and marinated artichoke hearts

With a glass of La Gitana sherry (Spain)

#### Fish Course

Warm local crab meat timbale, garnished with caviar and tarragon sabayon

With a glass of 'Macon-villages blanc, Cave Prisse, Burgundy (France)

#### Intermediate Course

Barford farm Blackberry sorbet

#### Main Course

Daube of beef served with spiced beetroot, French beans and chive mashed potatoes

With a glass of 'Fleurie, Laboure-Roi, Beaujolais (France)

A fish alternative is available if requested in advance

#### Desert

Baked Chocolate fondant with fresh raspberries and Dorset clotted cream

With a glass of 'Concha y Toro Sauvignon Blanc (Chile)

Coffee and mints

All five courses with wines only £39.95

Gentlemen are requested to wear jacket and ties (black tie optional)

### Creole Night

Saturday 17th October 2009

#### Starters

Crab and Brie Bisque with Parmesan Straws

Brandied Mushrooms, Red Pepper and Ham served with Crusty Roll

Crayfish Carolyn - Glazed Crayfish in a Brandy sauce

#### Main Courses

Cajun roasted Strip Loin of Beef with Sauté Green Beans and Bacon

Chicken Jambalaya

Grilled Red Snapper with Roguay Sauce and Rice

Louisiana Vegetarian Gumbo with Creole Rice (v)

#### Desserts

Banana Fritters with sweetened Clotted Cream

Almond Crunch Peach Pie with Vanilla Bean Ice Cream

Amaretto Cheesecake

All three courses only £21.95

By reservation only

*Eat, drink and sleep blissfully*

The Hambro Arms, Milton Abbas, Blandford Forum, Dorset DT11 0BP

Tel. 01258 880233 [www.hambroarms.com](http://www.hambroarms.com)