



Reporter

News and Views from around the area

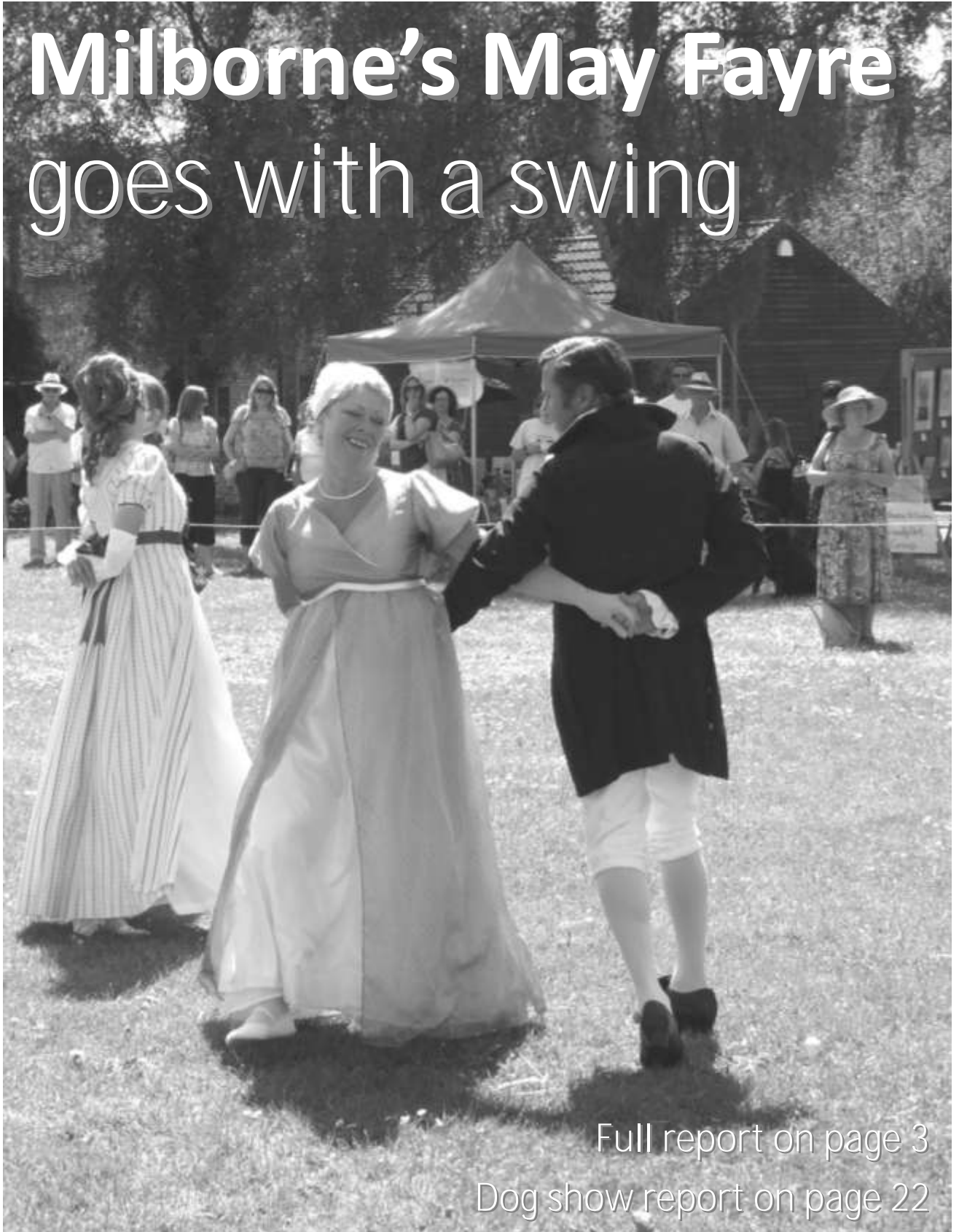
Volume 2 Issue 6

June 2010

www.milbornestandrew.org.uk/reporter

Milborne St. Andrew

Milborne's May Fayre goes with a swing



Full report on page 3

Dog show report on page 22

Food and Wine Society



A GOOD time was had by some of our members as we celebrated St. George's Day at The Royal Oak on 24th April with a suitably English menu.

Our next event is a Casino Night at Cygnets Restaurant in Weymouth where we will be trying our luck at the gaming tables and sampling some food with a 007 theme – on arrival we will be having sparkling wine with Octopussy (anyone's guess!) and for dessert Meringue with strawberries and Martini cream (shaken but not stirred!).

We have lots of other interesting events throughout the year – from wine tastings to trying out different foods and visits to restaurants. We always welcome new members – so if you like good food, good wine and good company, come and join us. Give me a call on 837929 or Helen Lord on 839222 and join in the fun.

Maureen Lock – Chairman

Local small-ads

Small ads of less than 30 words from local, private, advertisers are published free of charge

For Sale – Vinyls, a selection of 33, 45 and 78 rpms, various artists, including some boxed sets. Telephone 01258 837965 to arrange time to view.

100 CLUB WINNERS

Draw Date – Tuesday 11th May 2010

1st prize	£100	Sarah Fox
2nd prize	£50	Donna Hiscock
3rd prize	£28	Roy Sach

Drawn approximately every 5 weeks

The next draw is at 8.00pm, in The Royal Oak,

on Tuesday 15th June 2010

Anyone is welcome to attend

New members always welcome

The views expressed in this magazine are not necessarily those of the Reporter team.

Advertise with the Milborne St Andrew Reporter

Distributed to over 500 homes 11 times each year

Full page £175.00 p.a. / £25.00 per issue
 Half page £125.00 p.a. / £20.00 per issue
 Quarter page £75.00 p.a. / £10.00 per issue
 Eighth page £50.00 p.a. / £6.00 per issue
 Back page £240.00 per annum

Community events at the Village Hall will be advertised free of charge
 Other community events at half the above rates

Advertising copy MUST be received by the 14th of this month

reporter.ads@milbornestandrew.org.uk
 Advertisers will also be listed in the Business Directory at
 www.milbornestandrew.org.uk

Wednesday Social Club – May Outing

THE first Wednesday in the merry month of May, 53 of us set off for Kintbury, near Newbury. The Kennett and Avon canal was our destination and we were all looking forward to experiencing the joys of a horse-drawn barge.

Before we set off in the barge, we were introduced to Freddy the horse. Freddy who was only six years old was a lovely young shire horse. However, we were warned that because he was only a youngster he could be naughty and play up sometimes. During the journey he did hear some deer in the field and that started him running, anyway his handler soon had him under control. Whilst enjoying the tranquillity of our surroundings we all had sandwiches, tea and cake and marvelled at how smooth the barge felt as we glided effortlessly through the water. Having got back to Kintbury we all boarded the coach and made for Andover, to the garden centre. Quite a few of us bought plants and there was just time for a quick cuppa before heading back to Milborne.

Many thanks to everyone who put themselves out to ensure that we had a lovely, memorable day.

A rolling slide show of the day is available for viewing at the Friday morning Drop-in.

Dates for your diary:

Cream tea at Val and Dave's on 2nd June. Please let Val and Dave know if you are able to attend.

Mystery Trip – 7th July. Please come and join us for an evening tour of the Dorset countryside followed by a pub supper – all welcome. Please contact Margaret Evans 01258 450518.



The Village Lunch Committee is pleased to invite you all to the

JUNE VILLAGE LUNCH

To be held at the Village Hall on
SATURDAY 26th JUNE from 12.15pm

Main course : Sweet : Wine/Tea/Coffee : Mints
 £5.50 per head (children £2.75)

BOOKING ESSENTIAL!
 Tickets available from the Drop-In Centre at the Village Hall
 from Friday 4th June (10.00am to 12 noon)
 or call Melva as soon as possible to reserve tickets – 01258 837453

Your Reporter Team

Janet Allen, Kate Chastey, Ed Frost, Sue Gould,
 Heather V. Hogg, Sue Marsh, David Payne
 and Ed Richards

Advertising and General Enquiries: Ed Frost 01258 837921
 News and Features: Sue Gould 01258 837575
 Finance and Photography: Heather V. Hogg 01258 837392

Copy for the next issue MUST be received by the 21st of this month

Enquiries and copy to: reporter@milbornestandrew.org.uk
 E-copy as .doc or .pub files, pictures as .jpg or .pdf files please
 Paper copy to Sue Gould at 28 Stileham Bank DT11 0LE

Milborne May Fayre

THE hottest day of the year so far provided the perfect weather for the May Fayre last Saturday. This year's fayre was an eclectic mix of martial arts, historical dancing, a dog show and a plethora of side stalls ranging from artwork to craft stalls and face painting to plant stalls.

Fayre goers were treated to a fine demonstration from the Wessex Karate Academy who performed practice methods of goju-ryu karate. The 18-strong team were put through their paces, displaying their moves, all in full kit and voice.

Next up in the arena was Dorchester Historical Dance who specialise in old English dancing in period dress. The group performed a number of dances in stunning early 19th century costume. A wonderful spectacle for the audience, but it must have been hot for the dancers!

The fun dog show was well attended with 40 entrants from a wide variety of breeds. They competed across six classes including Best Puppy and Waggiest Tail which was won by Chuck, a Staffordshire bull terrier. Damory vet, Mr David Harding, acted as judge for the day – an unenviable task with so many entrants.

Brian Parkinson gave a running commentary on the PA system for the whole day, providing information and witty asides for all of the arena events, as well as a 'walking-talking' tour of the stalls. It was universally agreed that Brian, of the Milborne Players, gave a first class performance!

Among the many local craft stalls, were the beautiful watercolours of Ron and Dorothy Karley, depicting fungi and flowers; a wonderful display of work from the members of Milborne Friendly Art Group; Saucy Nancy's Peg Dolls and Sock Toys, cuddly toys made from (brand new!) socks. From further afield were John



Brian Parkinson gave a first class performance

and Sally Carpenter from Marlow, who offered wood turned crafts and jewellery. The WI had a new take on the tombola theme – a 'jarbola', where all the prizes came in jars, as well as running a cake stall. The Scouts provided hot dogs cooked over an open fire, and tea and cakes were a big hit in the hall, courtesy of the Swimming Club.

The organisers wish to thank all the local groups that took part and all those who attended making this year's May Fayre a big success.

Ed Richards



Wessex Karate Academy

And the answer to the question is . . .

A VERY enjoyable and somewhat competitive evening ended up with the Gardening Club not losing the plot and running out as eventual winners of the 2010 Village Quiz. Organised by the trustees, this event is not as cut throat as many think, the primary aim is to have a good time in good company, it is *not* intended to be a preliminary round for Mastermind, so hopefully we will see more teams in 2011. The questions were set by last year's winners and Tony Fox did the honours as the quizmaster. Well done to Tony and his team.

£61 was raised during the evening and this will go towards the buying of a commercial dishwasher when funds permit.

Runners up were the local Jam Tarts (W.I. to the uninitiated) and third place went to the Clangers, otherwise know as those intrepid Bellringers who sally forth most Tuesday evenings. The winning



team consisted of (left to right) Peter Dunkley, Bill Love, Hilary Baumberger and Sally Dyer and ideas are already circulating about next year's quiz format which might include more multiple choice rounds. This proved particularly successful a few years ago and is well worth thinking about again.

Moviola is another event organised by the trustees and proved to be another "Complicated" but enjoyable evening out at the movies without the long trek to Weymouth and beyond. Maggie is responsible for the programme and a meal is provided for those that want to meet up before the film. About 45 people attended the May event but unfortunately this is below the 'magic' figure of 60 which is the break even point that Moviola insist on if they are to continue to come to the village. So the old adage, if you don't use it you'll lose it applies. Luckily, at the moment, the shortfall is made up with proceeds from the food, the ice cream during the interval and the raffle and we have Jenny and Bill Preston to thank for the raffle. As a last resort the trustees step in and make up any difference because it is felt that this is a worthwhile service to maintain.

No news on the MUGA front but the planning application has been submitted, competitive quotes have been obtained and we just have to sit back and watch what happens next. The front Car Park entrance has been re-surfaced and a couple of the potholes filled so another tick in the box is due there. We did look in to resurfacing the entire car park and then to mark out the car parking spaces but at £10,000 that will have to be put on the back-burner until another grant can be obtained.

The trustees would also like to thank the residents on the Causeway who have whispered in our "shell-like" on a couple of occasions that they have seen children playing on the roof of the Hall. This is extremely dangerous as it is a fragile metal roof so the CCTV cameras have been realigned to cover the situation and the Police are now aware of this development.

We are still looking for a bookings co-ordinator and a young person to represent the views of the youth of the community and maybe at the same time gain some community award from the DoE Award scheme, for example. Now that volunteering for community work is high on the new Government's agenda we will see a flood of applicants, we wait in hope and expectation . . .

Richard Lock



**THE BENEFICE OF PUDDLETOWN, TOLPUDDLE AND MILBORNE WITH DEWLISH
PART OF THE CHURCH OF ENGLAND IN THE DIOCESE OF SALISBURY**

Ordinary Time

Dear Friends,

'Advent, Christmas, Epiphany, Lent, Easter, Pentecost, Trinity'.

Benny has a great song that he teaches the school children to help them learn the names of the seasons in the church's year. It has a very catchy tune.

Last month we celebrated Pentecost and Trinity Sunday in our churches and we are now entering what we call 'ordinary time.' This term comes from the word 'ordinal' and simply means counted time. We count the Sundays after Trinity (one to 23) all the way to All Saints Day in November.

Ordinary time is not mundane or common at all! In fact it is an extraordinary and exciting time when we will be hearing stories about the life of Jesus from *Luke's Gospel in our churches. If you come to church during this time you will see that the altar cloths are green. Green has traditionally been associated with new life and growth. In Christian tradition, green came to symbolize the life of the church following Pentecost, as well as symbolizing the hope of new life in the resurrection.*

We are privileged to live in such a beautiful part of the countryside. It means that we can recognise the changes in the seasons. I have been struck as we enter ordinary time at just how green our lanes and fields have become in the last month. The buds have opened and there are signs of new life everywhere.

In June, throughout the benefice, we have the opportunity to celebrate life and to praise and thank God for his wonderful creation and the part we play in working with him.

Milborne St. Andrew's Church is celebrating by holding an 'Open Gardens Day' on Saturday 5th June.

On the weekend of the 19th and 20th June we will be celebrating the life of *Puddletown village with a flower festival entitled 'a portrait of Puddletown'.*

On Sunday 20th June at 6.00pm there will be a 'Songs of Praise' service in Puddletown Church and on Monday 21st at 7.00pm David Illingworth will be playing 'organ fireworks', this will be followed by more singing. Look out for the posters!

Come and enjoy the gardens, the flowers and the cream teas.

Come and celebrate new life with singing.

Come and thank God for His goodness to us.

We are living in an extraordinary time!

Sarah Godfrey

**CHURCH SERVICES
June 2010**

THURSDAY 3rd JUNE
12.00 Lunch-time Communion Milborne

6th JUNE – Trinity 1
9.30am Family Communion Milborne
11.00 Holy Communion Puddletown
With Sunday Seekers and Creche
11.00 Morning Prayer Dewlish
4.00pm Tolpuddle Praise Tolpuddle
Village Hall

THURSDAY 10th JUNE
12.00 Lunch-time Communion Puddletown

13th JUNE – Trinity 2
8.15am 1662 said Communion Puddletown
9.30 Methodist United Service St Johns
Tolpuddle
9.30 Parish Communion Milborne
11.00 Family Service Puddletown
11.00 Family Communion Dewlish

THURSDAY 17th JUNE
12.00 Lunch-time Communion Dewlish

20th JUNE – Trinity 3
9.30am Family Communion Tolpuddle
and Baptism
9.30 1662 Said Communion Milborne
11.00 Holy Communion Dewlish
4.00pm Milborne Praise! Milborne
Village Hall
6.00 Flower Festival Puddletown
Songs of Praise

THURSDAY 24th JUNE
12.00 Lunch-time Communion Tolpuddle

27th JUNE – Trinity 3
9.30am Holy Communion Tolpuddle
9.30 1662 Parish Communion Milborne
11.00 Family Communion Puddletown
With Creche and Sunday Seekers
11.00 Family Pet Service Dewlish

Benefice phone calls

During Benny's sabbatical from May to September you will not be able to leave a message on the vicarage answer phone. Instead we have a benefice mobile phone. The number is: 07760 304454.

To contact Rev Sarah Godfrey, please use this number. If she is busy please leave a message and she will get back to you when she can.

The benefice office number is 01258 839190. Marion Bishop, the benefice administrator, is in the benefice office on Tuesday and Friday mornings.

Flowers – w/e Saturday

5th and 12th June Jill Harvey
19th and 26th June Sally Dyer
3rd and 10th July Helen Pugh

Church Contacts

Vicar

Benny Hazlehurst

Associate Priest

Sarah Godfrey 07760304454

Church Wardens

Milborne St. Andrew

Eva Stockley 01258 837468

Pat Tribe 01258 837684

Dewlish

Jim Burg 01258 837466

Sue Britton 01258 837218

www.milbornestandrewchurch.org.uk

Church Cleaning – w/e Saturday

5th June Victoria Bone and Lin Chatfield

12th June Ed and Rose Frost

19th June Sue Lee and Val Hodges

26th June Mary Bennett and Pat Tribe



Announcement

Mrs Phyllis Poskröbko, mother of Ann Trathen, died peacefully at home on 14th May, aged 105.

MILBORNE ST. ANDREW CHURCH NOTES

Helping the needy in Kenya

MANY PEOPLE worked hard to raise money during Christian Aid Week. This culminated with musical entertainment on the Saturday night by the Memory Lane Swing Band in the garden of Little England Cottage. Additionally, a Goons sketch was performed by members of the Milborne Players.

PCC members had great fun peeling sacks of potatoes that went towards the sausage and mash supper during the interval, supplemented by some delicious trifles – much enjoyed by everyone (it was a sell-out). A big “thank you” to Charlotte for organising the event. To date, £455 was raised from this event alone, and a further £392 has been taken via the door-to-door collections.

The Christian Aid theme was continued on the Sunday afternoon at Milborne Praise! when Sarah showed this year’s Christian Aid DVD about poor sanitation in parts of Kenya. The children then went on to make money-boxes out of toilet roll holders, which they took home to put their pennies in to help the deprived Kenyan children.

At April’s Annual Parochial Church Meeting the following were elected or re-elected: Churchwardens, Eva Stockley and Pat Tribe; Secretary, Carolyn Martin; Treasurer, Andrew Mott; PCC members, Teresa Holmes-Thompson, Sue Lucas, Derek Ross, Elizabeth Walker, Kate Williams and Linda Wright.

Plans for toilets in church finalised

At the PCC meeting on 11th May the main topic for discussion was the provision of toilets in church. The plans have now been finalised with the addition of some storage space under the west window of the north transept. The plans have been submitted to the Diocesan Advisory Committee to apply for a faculty to carry out the work.

Eva Stockley and Pat Tribe (Churchwardens)

£455 raised for Christian Aid

A GOOD time was had by all on Saturday 15th May in the garden of Little England Cottage, raising funds for a good cause. To mark Christian Aid Week, the Parochial Church Council organised a wonderful evening of musical entertainment from the noted locally based musicians of the “Memory Lane Swing Band”. Chilly though the evening was, guests were warmed up by an amusing “Goon Show” in the interval as well as by the sausage and mash supper cooked by the ladies of the PCC.



Thanks are due to all those organisations and individuals who supported this event, including Western Marquees, Abbas Cabins, The Oak at Dewlish, the United Church Dorchester, Dorchester Quakers, our own MSA Royal Oak, WI members,

Village Hall and Social Justice Group. Also the ever popular Milborne Players, whose next production is coming up soon on 11th–12th June. A total of £455 was raised for the important work of Christian Aid which helps poor people in developing countries to improve their living conditions and life chances. *Charlotte Seymour-Smith*

DEWLISH CHURCH NOTES

Importance of fund-raising efforts

MANY THANKS to all who supported us at the Spring Sale. We raised £364.91 for church funds. These fund-raising events are very important in keeping the church finances healthy, and so I am very pleased to say that we have two such events lined up for June.

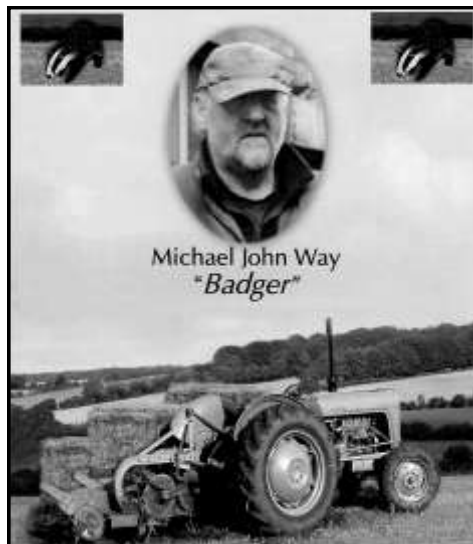
First, Mrs Audrey Penniston has kindly offered to open her delightful garden on Sunday 13th June, from 2.00–6.00pm. Audrey lives at Flower Cottage, Waterston. Teas will be available. The second event is on Thursday 17th June, when Mrs Daphne Berridge will hold a coffee morning at Shailes Farmhouse from 10.30am–12noon. Daphne also has a beautiful garden, full of wonderful scented roses.

On Sunday 4th July, we are holding our Parish Picnic on the village green – further details next month.

At our AGM Daphne Berridge resigned as Church Secretary after doing the job for many years. Thank you, Daphne, for all your hard work. Judith Bridger has taken on the job of Secretary. Although we had already been notified, Benny explained his reasons for leaving around the end of this year. We wish him and Mel well for the future.

Daphne Burg

Michael John Way



MICHAEL, known to most people as “Badger”, spent all his working life at Manor Farm, Milborne working for “Boss” Mr. Hooper alongside “Piggy” Mike Mullett. He fed the calves every morning and at weekends P.J., his nephew, helped. He loved driving his John Deere tractor (nobody else was allowed to), spending many hours working the land, sometimes chatting on his C.B. radio. He always took his dogs, first Cheeka and later her daughter Mitzzy.

Michael spent most of his time at the farm. Michael was a devoted C.B.er, his handle “Green Apple” spending well over 25 years “on the air”. He spent many long hours Dxing from Bulbarrow Hill, Windgreen and sometimes the Purbeck Hills with his faithful “furry seat cover”, Cheeka and Mizzy alongside him.

Michael was a well known face at Banger meetings, he was a regular at Matchams Park, always taking his dogs. He even had a brief career as a Banger Driver until he was “posted”, then spent the rest of the race being pushed, spun and shunted about, as his door was damaged he couldn’t get out of the car. That was his last race, he decided it was just “TOO RISKY”. He carried on going regularly to watch banger meetings at Matchams, The Mendips and Wimbleton sometimes with his brother Dave and later with girlfriend Jo and friend Archie.

Michael actually sponsored The Trophies when “Bourne Motor Racing Club” first started, where a few years later his nephew P.J. was a successful driver. Rest in peace Michael.

"The Milborne Players"
present

Charades

An evening of adult One Act Plays

11th and 12th JUNE 2010

WORK IN
PROGRESS

by

Damian Trasler



Directed by Melva Coe



Directed by Bill Preston

Milborne St Andrew Village Hall

Curtain up 7.45 pm Doors open 7.15 pm
Bar and Refreshments available

Tickets - Adults £6.50 Concessions £5.00

Contact Sid Coe 01258 837453

Also available from Londis Store M.St.A

www.milborneplayers.org.uk

Ladybirds making butterflies

THIS month Ladybirds have been studying the life cycle of butterflies. We started with the story The Very Hungry Caterpillar and have tried the foods he ate. The healthy fruits were followed by the 'less' healthy chocolate cake and cherry pie which the children enjoyed baking. The more unusual foods tried included Swiss cheese

and salami which the children tasted but not all were sure about! The photos show some of the artwork of caterpillars and butterflies. Rosie made a huge pompom caterpillar that required sticking onto a



long piece of paper – thank you Denise for the donation of the pompoms. More of our artwork can be seen by other users of the hall – a string of butterflies tied decorating the ceiling bar.

Advance notice – Ladybirds are holding an open morning on Tuesday 22nd June. Prospective parents and children are welcome to join us between 9.30 and 10.30am.
Liz Dyer – Supervisor



Milborne Ladybirds Playgroup

registered charity no. 1087441

We are a friendly community based pre-school, offering a safe, fun, learning environment. We have a band of enthusiastic staff who help your children to learn through play, allowing children to enjoy achieving their potential.

"...children are helped to feel secure by 'friendly and caring' staff."

Ofsted report 2007

Opening times:

Early birds 8:45 to 9:15, Session 9:15 to 11:45, Lunch Club 11:45 to 12:45

Contact Details: Ruth Evans 07905358299

info@milborneladybirds.org.uk www.milborneladybirds.org.uk

GET READY
for

THE SHOW

at the Village Hall
on Saturday September 11th



Fruit and Vegetable Collections

The **HEAVIEST**

The **LONGEST**

PHOTOGRAPHY

Cookery

and a

Children's Section

Everyone can enter

THE MILBORNE ST. ANDREW GARDENING CLUB

Invites you to take part in

THE SHOW

Enjoy a celebration of flowers, fruits, vegetables and Dorset Countryside
Plus exhibitions of Art and Crafts

at The Village Hall

Saturday 11th September from 2.00–4.00pm

Delicious teas available – home made cakes

Good Raffle prizes to be won

Classes in the Show

1. Individual blooms or sprays
 - a. Daisy (any type)
 - b. Dahlia
 - c. Gladiolus
 - d. Rose
2. Mixed bunch of Garden Flowers
3. Fruit and vegetables
 - a. A bowl of fruit – one variety (eg apples, pears)
 - b. A bowl of mixed fruit
 - c. A selection of mixed vegetables in a suitable container
 - d. Three vegetables of one variety of your choice (eg 3 carrots, 3 beans)
4. The Heaviest Potato
5. The Longest Runner Bean
6. Flower Arrangements
 - a. An arrangement of foliage only.
 - b. An arrangement in an unusual container
 - c. A miniature arrangement (maximum of 4" in any direction)
7. Photographs (Unmounted. Max A5 / 8" x 6")
 - a. The Jurassic Coast
 - b. My Garden
8. Cookery
 - a. Three cup cakes of any variety
 - b. A jar of Jam (any variety)
 - c. A jar of Jelly (any variety)
 - d. A jar of Marmalade (any variety)
9. **Children's Section** – To be announced

All classes are open to everyone in the village to enter. You do not have to be a member of the Gardening Club, so start growing plants and taking photos. Printed schedules including entry forms will be available from various places in the village at the end of June or beginning of July. Further details in the July *Reporter*.

Weather in Milborne St. Andrew April 2010

TOTAL rainfall in April was 45.9mm which was 76% of average but 38.3mm of that rainfall occurred in the first three days of the month with the rest of the month only receiving 7.6mm of rain. A northerly wind persisted for most of the month which coupled with low night temperatures retarded growth of plants. There has only been 4.0mm rain during May so far with the northerly air flow continuing which has not encouraged much growth either. Little rain is forecast for the rest of May so there is likely to be a rainfall deficit of around 100mm by the end of the month. The Met. Office forecast for the first two weeks in June suggest that rainfall is likely to be higher than average in all areas but other long range forecasts suggest less rainfall especially in the south. The two years with lowest April/May rainfall I have recorded were 1980 and 1976. In 1980, the June rainfall was one of the highest June rainfalls I have recorded at 136.8mm whilst in 1979, June had the lowest June rainfall I have ever recorded at 6.4mm. As things stand at the moment, we may be in for an agricultural drought.

"Maids are May when they are maids; but the sky changes when they are wives" (Shakespeare)

Pluvius

Kemp & Co.

www.kempandcoproperty.com

Contact your local office now for a
**FREE Rental Appraisal & Expert
Advice from ARLA Qualified
Specialists**

Tailored Services to Suit Your Needs
Fixed Tenant Find Fees
Free Rent Guarantee Insurance
Extensive Marketing

*Protecting You,
Protecting Your Investment*

9 Challacombe Square, Poundbury,
Dorchester, Dorset, DT1 3SX
01305 251800

Moving House?

Before you speak to an agent, speak to us.
Local, Efficient, Reliable and Independent Advice.
We will probably even save you money!

For example, **LOCAL HIPS**
(Home Information Pack)

Only **£199** + VAT

Information and conveyancing from the local expert

Dorchester area

Michelle Wilson 01305 251222

Blandford area

Mark Bellman 01258 459361

Blanchards Bailey LLP
Solicitors

A Professional and Personal Service

Please quote DP106

www.blanchardsbailey.co.uk

Offices also in Shaftesbury

Campaigning to BUY BRITISH – at the May meeting of the WI

CHAIRING her first meeting as President, Linda Wright introduced the new committee and took the opportunity to thank Heather Hogg not only for her Presidency over the last 3 years, but for her many years of loyal service to Milborne WI.

Every year WI members put forward resolutions to the National Federation which then form the basis of campaigning activities and this year the overwhelming favourite is for mandatory labelling of food with true country of origin. We are always keen to “buy British”, and remembering that the WI’s campaigns have been important, and in many instances influential, we were very happy with the final show of hands which recorded a unanimous “Yes” vote.

June Maitland reported back on an interesting Spring Council Meeting held at the Lighthouse, Poole. The highlight was a talk by Erin Pizzey, founder of the first refuge for desperate mothers and children. It was the WI and many of its groups who helped her during the first years of running the refuge; it never needed more than a quick phone call to the local WI and help was provided.

Well done to members who took part in the County Group quiz, coming second and third – and the Village Hall quiz, in which our team came second.

A group from Milborne joined other WI members from Dorset at a most enjoyable ‘Art Lovers’ Lunch’ in Bournemouth, with a delicious lunch in the company of Rupert Maas (well-known from Antiques Roadshow). An art expert and picture dealer, he gave an enlightening and thoroughly entertaining talk on Pre-Raphaelite painting. We were left hoping that County would not be long before they organised something similar again.

Coming up: *Triathlon*: walking, swimming, cycling – we are encouraged to take part in this “Challenge to WIs” initiative to get and keep fit. We are to keep a tally of what we already do, even walking the dog counts. *Swishing*: Opt for sustainable, ethical fashion, but forget “throwaway garments”. Come along to the Village Hall on Wednesday 21st July between 6.00 and 8.00pm, and swap an item(s) of clothing, shoes, accessories. *Summer supper*: will be held on Friday 18th June in Josie Wright’s garden at Brooklands. *Summer Outing*: Remembering Mrs Bryant, our enthusiastic speaker on Moreton Church and TE Lawrence as well as the Whistler windows, we will meet on Thursday 12th August at Moreton Church and Gardens where Mrs Bryant will give us a guided tour. *Photo at the tree*: Parish Pit – Tuesday 22nd June at 6.30pm (Wednesday 23rd if raining). As many as possible please for our photo.

Please come along to our next meeting on Thursday 10th June, and bring a favourite photo, one you would like to talk to us about. There will also be a talk from Christine Shaw on ‘Cape Town to Victoria Falls’. If you would like to find out more about the WI and all it does both locally and nationally, spend a sociable evening with us, we would love to see you.

Pat Bull



Sohani Gonzalez

B.A., M.C.H., R.S.Hom

Registered Homeopathic Practitioner with over 25 years experience in Sussex, London and Dorset

- Nutritional and Dietary advice
- Allergy Testing

Homeopathic medicine is over 200 years old. It is popular world-wide because of its effectiveness, safety and its ability to treat all kinds of physical and emotional problems.



Consultations available in the Blandford Forum and Dorchester areas

Please call for an initial appointment

01258 839043

www.sohani-homeopathy.com



Do you have piles of paperwork that need to be sorted?

Do you need someone to take delivery of that important parcel whilst you are at work?

The Passionate PA can help with lots of things that are on your 'to do' list!

Please contact Kate Chastey to find out more.
07787 123 122

kate@thepassionatepa.co.uk
www.thepassionatepa.co.uk

PR • Marketing • Events • Promotions
Organisation • Concierge • Administration

Business & Domestic

WOODS
(DORCHESTER) LTD

Funeral Directors

Established in Dorchester since 1878

Monumental Masons

AVAILABLE 24 HRS A DAY

Paul R. Gawler M.B.I.E. Dip.F.D. M.B.I.F.D.

Pauline J Guy Dip.F.D. M.B.I.F.D.



DORCHESTER 01305 250425



UNDER
NEW OWNERSHIP

**BERE REGIS
MOT & SERVICE CENTRE**

TEL: 01929 472205

MOTs £42.00

**MOT • SERVICE • REPAIRS
COMPUTERISED DIAGNOSTICS
FREE COURTESY CAR**

OVER 30 YEARS' EXPERIENCE

UNIT 1, TOWNSEND BUSINESS PARK,
BERE REGIS, DORSET BH20 7LA

(AT REAR OF SHELL SERVICE STATION)

GERRY'S PLANTS

Shrubs, Perennials, Climbers,
Summer and Winter
Bedding and Baskets
Soft Fruit and Vegetable Plants

B&B also available

Come and see them at

12 The Rings
Milborne St Andrew
Tel: **01258 837386**

Domestic Appliance Repairs

LOCAL
(Bere Regis)

01929 462222

No call-out charge

No charge if the equipment proves
uneconomical to repair

KMc Electrical Services Ltd
Electrical Contractor



- All types of electrical work undertaken
- Extra points to full rewiring
- Test & Inspection of building wiring
- Professional, quality service

Telephone: 01258 881 439

Mobile: 07712 646 131

Email: km.electrical@btinternet.com

ELECSA

REGISTERED MEMBER
 ECA

www.dcmtyres.co.uk
info@dcmtyres.co.uk

dcm tyres
wessex ltd

BATTERIES ALIGNMENT TYRES



Open 7 Days
High Performance - 4 X 4 - Car - Van
Your Local Independent Tyre Dealer
Best Price & Service in Dorset

Next to Homebase

01258 488667



DCM Tyres (Wessex) Ltd, Bournemouth Rd, Blandford St.Mary, Dorset,DT11 9LW

Episode One: Keeping Calm at Hillside Cottage

Episode One, in which we meet the Grumpy Old Moaner of Hillside Cottage and some of the animals that try their best to keep him calm.

THE animals of Hillside Cottage live with a very Grumpy Old Moaner. All of us animals, even the rather wild ones, appreciate the Old Moaner's hard work looking after us but his demeanour is not his best feature. He just gets so cross.



I try to live quietly with my eight sisters in the hen house and my name is Seven of Nine. All my sisters have nice names like Charlie and Clarissa – if anybody out there knows why my name makes people laugh please write and let me know because I just **Don't Get It. Not many people, or animals, share the Old Moaner's sense of humour.**

This morning the Old Moaner was in the hen house very early – just after the post man's van roared off up the lane spitting gravel over our fence and generally making far too much noise far too early – or so the Old Moaner was raging. This was odd as he was also moaning about how late the nice Mr Postie is nowadays.

The Old Moaner had no boiled rice or tasty bean shoots for us but was clasping a crumpled envelope and a screwed up letter from someone at the Hong Kong and Shanghai Bank. This made the girls nervous because we know they eat the feet of chickens in Shanghai and we wonder what they do with the rest of the animal and how legless chickens can have a productive life and realise their potential.

Anyway, The Old Moaner was raging about this letter from the Service Improvement Officer – “Service . . .” he screamed “what do they know about service. They would not know service if it came up behind and bit them on the bum. And there's no sign of improvement here anyway. They can't do a simple thing and get it right first time. “Officer” – that's not the title I'd give them. Time wasting moron more like. I know what it means to be an officer – ten years of National Service is what these jokers need.”

The Old Moaner unscrewed the missive and laid it down rather carefully in the hen house just under our favourite perch. “Add some quality to this letter from these imbeciles” he told us and left banging the door rather too loudly for such an early hour.

The Old Moaner's idea was to retrieve the letter tomorrow and send it back to the Hong Kong and Shanghai Bank with our “improvements” all over it. But this seemed very drastic to us and between us we managed to read that they were cross because too much of something called money went out and not enough came in. The solution, very simple to us bird brains, was for the Old Moaner to put more of the stuff in and then the Service Improvement Officer would be more cheerful. Simple.

So the girls and I have shredded the letter and used the bits to line our favourite laying box. Clarissa is sitting on it now trying to make a nice egg for the Old Moaner's breakfast. That should cheer him up – we hope.

As you can see, the Old Moaner has a complex and difficult philosophy that can not be easily summarised. He believes that every other person, and even some animals, are here on earth to make his life difficult; especially the Government, the Gas company, the Inland Revenue, all our rabbit friends, the mole family and people who park closer to the door than he can at Tesco.

On the other paw or claw, we animals of Hillside Cottage have a simple philosophy, easily summarised:

- A good day is when you are still alive at the end of it and have not been eaten.
- A good night is one you wake up from the next morning.
- If we animals can just help someone as we go about the daily struggle of staying alive, then we reckon we've had a good day.

I'll get one of the Labradors or the sheep dog to write the next column as this typing lark is rather hard on the beak.

Grumpy Old Moaner



Milborne St. Andrew Gardening Club

**Invitation to join the Gardening Club's
visit to West Dean Gardens**

IN JULY the Gardening Club will be visiting West Dean Gardens near Chichester. West Dean is a large garden surrounded by trees with a magnificent pergola, gazebo and summer houses, together with mixed herbaceous borders, Victorian greenhouses and a large working kitchen garden. There is a Parkland Walk and St. Roches Arboretum. The licensed restaurant offers a range of “home baked” foods.

Currently there are still some seats available on the coach so we would like to invite non-members to join us. The cost is £18.00 per person, which includes the entrance and the cost of the coach.

If you wish to join us on this visit, please ring me on 01258 837140 as soon as possible so we can be sure that the coach is filled and also there is room for all interested. Payment to be made when booking by cheque made payable to Milborne St. Andrew Gardening Club.

Venue:

West Dean, near Chichester

Date:

Tuesday 13th July 2010

Depart:

9.00am. Meeting at Londis

Village shop

Return:

Approximately 4.00pm.

We look forward to welcoming you on this trip. The members are very friendly and this should be a really good visit

Hilary Baumberg Secretary



OLD BARN DENTAL PRACTICE LTD

Mr John Woodward BDS, (Hons.) U. Lond. LDS RCS

**Modern, cosmetic and
restorative dentistry
in a friendly atmosphere**

**Manor Farm Road,
Bere Regis
Wareham
Dorset BH20 7HD**

**Telephone: 01929 471023
email: oldbarn@tesco.net**

WEATHERBURY SINGERS

PRESENT

"SONGS FOR A SUMMER EVENING"

At Ansty's Old Brewery Hall and The Fox Inn

On **Saturday 19th June** experience an evening of entertainment from the celebrated **Weatherbury Singers** of Puddletown and sample the delicious food provided by **The Fox Inn**

All for an inclusive price of £16 per head.

Begin your evening at The Fox Inn with a **tasty Hot Finger Buffet** from 6.00pm cross the road to the Hall (licensed bar available) and enjoy the uplifting sounds of the **Weatherbury Singers** at 7.30pm then return to the Fox for a **luscious dessert** after the show.

If you wish, you can miss out the food and just take in the concert at **£6 per head**.

Raffle in aid of Fortuneswell Cancer Trust, Dorchester

Deadline for ordering food tickets is **Tuesday 15th June**

Tickets from Diane Holt 01258 837310
or
Judy Cooper 01258 837120

THE RURAL 'G'

Homewatch Newsletter
Blandford Rural May 2010

Local reported crimes in April

Date	Village	Incident	Location
3rd April	Milborne St Andrew	Theft – Lead	School
4th April	Milton Abbas	Burglary – Garage – Nothing taken	Pondhead
6th April	Milborne St Andrew	Theft – Winch cable and arm	Brooklands
9th April	Milton Abbas	Theft – Sheep	Milton Abbas

Theft from vehicles still occurring

THIEVES are still targeting vehicles parked at various sites across north Dorset and the Blandford Rural North patch in particular. Over April, a total of five break-ins to motor vehicles happened with a property removed from each and every one of them. Every break was also at beauty sites that are popular amongst ramblers, dog walkers and visitors driving to car parks and pull-ins and leaving their personal belongings in the car. IF YOU GO OUT TO REMOTE SPOTS WITH YOUR VEHICLE, PLEASE DO NOT LEAVE

VALUABLES IN THE CAR OR ATTEMPT TO HIDE THEM. TAKE THEM WITH YOU OR LEAVE THEM AT HOME. Please spread the message as far and as wide as possible to eradicate these crimes. At every known popular place to go out for walks, etc, Dorset Police have placed warning signs nearby reminding the community to heed this advice. If there is **somewhere you think would benefit from a sign that doesn't currently have one**, please call in on the number below to advise us and we will place one out!

Home Security advice to reduce rural breaks

There are still a number of break-ins happening in and around the rural areas. Consider your home security and how easy it is for would-be thieves to remove your belongings from your property. Let common sense be your guide. Gravel paths and driveways are good for making lots of noise and extra external lighting can be used to flood priority areas with light (shady oil tanks or out-buildings, etc). If you are unsure, please get in touch on the number below to discuss any concerns and arrange a crime prevention survey if necessary. We can also point you in the direction of cost friendly products which may address your concerns including alarmed padlocks, out-building alarms and property marking.

The next public PACT meeting is at 7.00pm at Blandford Corn Exchange on 6th July 2010.

Anyone with information relating to any of the crimes mentioned here or on the stat sheet should contact local officers immediately on 01202 223003

EMPTY YOUR CAR!

You can do it
or the thief can do it
The choice is yours

CDs, mobile phones and handbags are
the thief's speciality so
please remove or lose them



Dorset Carpet Care is a local, family run business specialising in the cleaning and restoration of carpets, rugs soft furnishings and stone or tiled floors, in homes and businesses throughout Dorset.

We use various technologies including the latest truck-mounted hot water extraction system that can clean deeper and more effectively than other methods.

We belong to the NCCA and IICRC, which means we are fully qualified, honestly priced and our services come guaranteed.



- ✓ hot water extraction deep cleans
- ✓ removal of stains and smells
- ✓ stain protector application
- ✓ treatments for allergies and pests




Call Andrew or Joanne
on 01258 837092

www.dorsetcarpetcare.co.uk




Blandford · Dorchester · Shaftesbury · Sherborne · Weymouth · Wimborne




Dorsetlettings
co.uk

Dorset's leading letting agent

- ▶ specialists in residential lettings since 1984
- ▶ reputation built on reliability and efficiency
- ▶ experienced, ARLA trained and qualified staff
- ▶ professional advice, friendly service



24 Market Place, Blandford, DT11 7EB
blandford@dorsetlettings.co.uk 01258 452444



Large Beer Garden

11 En Suite Letting Rooms

Private Parties Welcome

Function Room Available



The Fox Inn
Ansty

Fresh Cream Teas now served every Mon to Sat
3.00 - 5.30pm

World Cup Supper
Kicking off with Saturday 12th June
England vs USA - Give us a call for details

The £5.00 Menu is still available!
Enjoy a £5.00 main course lunch every Monday - Friday

For reservations please call 01258 880328 or drop in and see us
Ansty Dorchester Dorset DT2 7PN
www.anstyfoxinn.co.uk

COLIN J. CLOSE FUNERAL SERVICE



*A family run business,
serving the local community of
Blandford and surrounding district*

CHAPEL OF REST
PRE-PAYMENT PLANS

24 HOUR SERVICE
MEMORIAL MASONRY

PEEL CLOSE, SALISBURY ROAD, BLANDFORD
Tel: 01258 453133
Email: info@close-funeral.co.uk

*Also at Cemetery Chapel
Sturminster Newton*



www.grassby-funeral.co.uk

Milton Abbas Neighbourcar



Are you over 50 or disabled?

Need transport for surgery visits and other appointments?

Milton Abbas Neighbourcar is a voluntary transport scheme covering the area served by Milton Abbas surgery. We can take you to medical appointments and social events.

Ring 01258 881709 to register and for more information.

Gardens open in Milborne

THIS year Open Gardens in Milborne is taking place on Saturday 5th June. 21 gardens will be open including six which have never been open before. There is a huge variety – large, small, paved, grassed, growing flowers, fruit and vegetables, many with unusual plants and containers, but all interesting in different ways. Owners will be there to welcome you, and discuss their plants, some will have plants for sale, and the gardens are open from 10.30am to 5.00pm. Please go first to the Village Hall to pay the £4 entrance fee, which lasts all day, and get a sticker and brochure with map.

At the Village Hall there will be other attractions: coffee and tea with home made cakes in the morning, and cream teas in the afternoon and also a good raffle.

The event is in aid of funds for St. Andrew's Church, and, unusually, the tower will be open at no extra charge. There is a simply stunning view from the top, the whole village laid out before you, so go and see if you can pick out your own house! The ascent of the tower is, unfortunately, not suitable for the disabled or unaccompanied children. Let us just hope for fine weather so that everyone can enjoy this lovely day out.

2010
OPEN GARDENS
in Milborne St Andrew
IN AID OF
ST ANDREW'S CHURCH
SATURDAY
5th JUNE
10.30 am to 5.00 pm
Adults £4 Accompanied Children - **FREE**
Morning Coffee & Cream Teas in the Village Hall
Lunches at the "Royal Oak"
GERRY'S PLANT STALL
* **RAFFLE** *
Climb the Church tower
FREE PARKING

A great start for Milton Abbas Neighbourcar

MILTON ABBAS Neighbourcar was successfully launched on 4th May.

It is one of several schemes in Dorset organised in conjunction with local GP practices offering transport to people with difficulty attending medical appointments as they do not have access to public or private transport.

Nigel Hodder has volunteered to be the Transport Coordinator for Neighbourcar. Having completed the first transfer he said "setting up something like this can be a complicated process but we have been lucky to have strong support from NHS Dorset and the team at Milton Abbas surgery. We have all worked very hard to get this off the ground and the fact that we have had fifty patients register with us already would suggest we are doing something right. When a call comes through I contact the driver who lives nearest the patient and if they can't help on that occasion I widen the net until someone says they are available to complete the journey."

Pam Lody from Winterborne Stickland, the first patient to use the new service, said "I can honestly say this new scheme is wonderful. In the past a few of us have tried to co-ordinate appointments so we travelled together. However under the new scheme, when we need a lift we just phone the co-ordinator on the dedicated line and they arrange transport for us. It is so easy and straightforward and a lot more convenient".

Users of the service pay £5 for a lifetime membership of the scheme and 45p per mile for medically related trips to the surgery, dentist or hospital. The scheme received start-up funding from the Dorset Project for Older People Partnership and has subsequently received donations from various Parish Councils. Nigel says "at 45p per mile we cannot make this scheme fully pay for itself, so we asked the Parish Councils for a modest donation to help cover our overheads such as insurance, telephone and stationery costs".

Currently there are twenty-eight drivers participating in the scheme – most of whom were previously drivers with the Friends of the Practice scheme operated by NHS Dorset.

If you would like to register as a client or volunteer to be a driver with Milton Abbas Neighbourcar, call Nigel on 01258 881709.



The photograph shows passenger Pam Lody and driver Jan Dickerson.

If you reply to one of our advertisers please mention that you saw the ad in the Milborne St. Andrew Reporter.

A traditional village pub where families are made welcome



in
Milborne St. Andrew

Lovely garden with a children's play area

Full menu available 7 days a week

Exciting and extensive children's menu

Excellent Sunday Roast 12.00-3.00pm

Separate Sports Bar

Sky Sports and ESPN

Pool and Darts

Function Room and Skittle Alley



June:

Throughout June - World Cup Frenzy

All games being shown in our Sports Bar!

Friday 4th June - Full Metal Racket - Live music from 9.30pm

Saturday 5th June - Open Mic night from 9.30pm -
own instruments essential - PA provided

Friday 18th June - Live music with Lisa Makk - from 9.30pm

Sunday 20th June - Fathers Day - Sittings at 12noon and
2.00pm with gifts for all dads - Booking required

Sunday 27th June - Royal Oak Quiz Night - 7.30pm
Please register your teams before the day.



Dog
friendly

takeaway
menu
available

tel: 01258 837 248

DORCHESTER HILL
MILBORNE ST. ANDREW
DORSET DT11 0JG

Community Contacts

More information about many community organisations can be found on www.milbornestandrew.org.uk

Councils

Environment Agency Floodline		0845 9881188
North Dorset District Councillor	Cllr Michael Cox	01258 881396
Parish Council – Dewlish	Clerk: Pat Gubbins	01258 881348
	Chair: Cllr Mike Claydon	01258 837314
Parish Council –	Clerk: Colin Fletcher	01258 450639
Milborne St. Andrew	Chair: Cllr Simon Curtis	01258 839000

General – Adult

Drop-in Centre – POPP	Rose and Ed Frost	01258 837921
IT Club (Connecting Dorset)	Sue Gould	01258 837575
Ladies Group – Dewlish	Judith Bridgen	01258 837157
Memory Lane Swing Band	Bob Boorman	01258 839077
Wednesday Social Club	Margaret Evans	01258 450518
Women's Institute	Linda Wright	01258 837255

General – Youth

Beavers	Sue Mullett	01258 839076
Cub Scouts	Jo Hewish	01305 852614
Hazelnuts out-of-school club	Hazel Barrett	01305 848588
Ladybirds (Playgroup)	Marion Bishop	01305 848427
Scouts	Jim Burg	01258 837466
Under 5's Group – The Busy Bees	Jane Williams	01258 839291
Youth Club age 8 – 14 yrs	Sallie Maitland-Gleed	01258 837442

Police

Police – Non-emergency contact		01202 222222
Community Beat Officer	PC Dave Mullins	01202 223003
		07825 521850
Community Beat Officer (Dorch)	PC Charlie Dale	01305 222222
Community Service Vehicle	CSO Angie Partridge	01202 226000
Safer Neighbourhood Team		
Blandford Rural South	PC Dave Mullins and	01202 223003
	PCSO Luke Goddard	or 07825 521850
	Or email blandfordruralsouthSNT@dorset.pnn.police.uk	

School

Milborne 1st School		
Headteacher:	Anne Purdy	01258 837362
Chair Govs:	George Legg	
Friends of School Chair:	Sally Taylor	

Special Interest

Bellringers	Pip Bowell	01258 837329
Food and Wine Society	Maureen Lock	01258 837929
Healthy Eaters	Heather Gipps	01258 837058
MSA Friendly Art Group	Sue Marsh	01258 837414
MSA Gardening Club	Sally Dyer	01258 837061
Milborne Players	Roy Sach	01258 837033
Ranters' Folk Session	Roger Harrall	01258 837371
Round Robin Ramblers	Ian Bromilow	01258 880044

Sport

Abbey Swimming Club	Pat Cowan	01258 880601
Adult Tap Dancing Milton Abbas	Libby Goodchild	01305 268029
Archers – Crossways	Sheila Ryall	01258 837504
Athletics – Junior	David Pearson	01258 837057

Badminton	David Payne	01258 837700
British Horse Society (Dorset)	Carol Shoopman	01258 880318
Circuit Training and Pilates	Claire Barratt	01929 554999
		07946 732769
Cricket – Dewlish	Elaine Kellaway	01258 837696
Cricket Club – Milton Abbas	Andy Smith	01258 880310
Cricket – Junior (U11 – U13)	Andy Smith	01258 880310
Football – Adult	Paul Morgan	01258 837619
Football – Reserve Team	Andy Draper	07824 394436
Football – Under 15s	Grant Taylor	07879 841518
Football – Under 11s	Daryl Sims	01258 881397
Modern Sequence Dancing	Grace Davies	01258 837261
Running Group	Anne-Marie Pearson	01258 837057
Skittles – Dewlish	Frank Ross	01258 837366
Sports Club		
Chairman:	John Sanderson	01258 837049
Bookings:	Jenny Balcon	01258 837121
Table-tennis (over 50's)	Sandra Shannon	01258 837253
Tap Dancing for Men and Women		01258 880523
Yoga	Sue Chapman	01305 848053

Village Hall

Dewlish		
Chairman:	Alex Carter	01258 837312
Sec:	Alex Carter	01258 837312
Milborne St. Andrew		
Chairman:	Richard Lock	01258 837929

Milborne St. Andrew Village Hall and Dorset Moviola present



Friday 4th June at 7.30pm

Tickets £5.00

From Maggie Redmill - Tel 01258 837262

Supper available at 6.30pm at additional cost

BOOKING ESSENTIAL

Community Events Diary

Add your event to this diary by contacting the Reporter – tel: 01258 837921 or email: reporter@milbornestandrew.org.uk

May
 Sunday 30th–
 Monday 31st Afternoon Tea Almshouses Reading Rooms Milton
Abbas in aid of St. James's. Also Sundays during the
 summer 2.00pm until 5.00pm.
 Sunday 30th Quiz The Royal Oak 7.30pm.
 Monday 31st Cream Teas Royal British Legion, Parish Room,
St. Mary's Church, Puddletown 2.30–5.30pm.

June
 Saturday 5th Open Gardens, approximately 20 gardens in
 Milborne will be open from 10.30am–5.00pm.
 Friday 11th–
 Saturday 12th The Milborne Players One Act Plays at Milborne St.
 Andrew Village Hall – see page 6.
 Friday 18th **Ranters' Folk Session** Sports Club 8.00pm.
 Saturday 19th Church Fete and Dog Show Briantspuddle 2.00pm.
 Saturday 26th Village Lunch – see page 2.

July
 Wednesday 7th Wednesday Club Mystery Trip – see page 2.
 Tuesday 13th Gardening Club Outing to West Dean Gardens, near
 Chichester – see page 11.
 Saturday 17th Fifth Food Festival and Classic Car Show Village
 Hall, Leigh, Nr Sherborne from 10.00am–4.00pm.
 Mat Follas, *Master Chef of 2009, will be opening the*
Fair. Entrance £2 Children Free. Proceeds to the
Leigh Village Hall and St. Andrew's Church, Leigh.

August
 Sunday 8th Village Fete in aid of Weldmar Hospicecare Trust.
 Milborne St. Andrew Village Hall and Field.
 11.00am–3.00pm – see page 20.

Regular Bookings at the Village Hall

Beavers Monday 6.00–7.15pm MH (term time only)
 Computer Club Monday 6.30–7.30pm CR (term time only)
 Ladybirds Playgroup Monday–Friday 9.15am–11.45pm (or 12.45pm
 depending on whether there is a lunch club) MH (term time only)
 Players Monday 8.00–10pm MH
 ABC Line dancers Tuesday 7.30–10pm MH
 Cub Scouts Tuesday 5.45–7.15pm MH (term time only)
 MSA Friendly Art Group second and fourth Wednesday 7.00–9.00pm CR
 100 Acre Wood Pottery Wednesday 6.00–10.00pm MH (term time only)
 Wednesday Club first Wednesday 2.30–4.30pm MH
 Gardening Club fourth Thursday 7.30–10pm MH
 Healthy Eaters Thursday 7.00–8.00pm CR
 Karate Thursday 5.10–6.40pm MH
 Village Hall Committee third Thursday 8.00–10.00pm
Women's Institute second Thursday 7.30–10.00pm
 POPP Drop-In Friday 10.00am–12 noon CR
 Youth Club every other Friday 6.30–8.30pm MH (term time only)
 Sequence Dancing third Saturday 7.30–10.30pm MH
 Village Lunch last Saturday of the month 12.15–2.30pm MH/CR
 Milborne Praise! third Sunday 4.00–5.30pm MH
 Moviola and supper about every six weeks, look out for the posters,
 6.30–10.30pm MH/CR
 Artsreach Events – look out for the posters.

Check Village Hall Notice Board for any other events that are one off for you to join in with.

Regular Bookings at the First School

Pilates Monday 7.00–8.00pm (term time only)
 Yoga Tuesday 6.15–7.45pm (term time only)
 Badminton Wednesday 7.00–9.00pm (term time only)
 Circuit Training every Thursday 7.00–8.00pm

Moviola presents "Invictus" (12A) Friday 4th June 2010

INVICTUS tells the inspiring true story of how Nelson Mandela (Morgan Freeman) joined forces with the captain of South Africa's rugby team, Francois Pienaar (Matt Damon), to help unite their country. The newly elected President Mandela knows his nation remains racially and economically divided in the wake of apartheid. Believing he can bring his people together through the universal language of sport, Mandela rallies South Africa's underdog rugby team as they make an unlikely run to the 1995 World Cup Championship match.

This film opens with images of two sports pitches. On one side of a narrow road lies a rugged patch of scrubland, where a sk-thin black kids holler as they run around playing football. On the other side, on green and tended grass overseen by a white schoolteacher, rich white boys play rugger. It is the early 90s, as exiled South Africa's ANC leader Nelson Mandela is released from Robben Island to become the country's leader. He finds himself presiding over a population of vengeful blacks and furious whites, to which he must bring about racial unity. He places upon the nation's rugby team, the Springboks, and the emblem and feel-good potential of sport, so appealing to politicians, to do just that.

Clint Eastwood's *Invictus* suggests that sport can unite a nation but leaves a number of nagging questions about apartheid and its legacy. Recreating real life is a tricky ground for filmmakers, particularly when the event is etched firmly in history. What the film loses in the element of surprise, it more than makes up for in its portrait of Mandela by delving into why he is such an extraordinary human being. *Invictus* won Oscar nominations for Best Performance by an Actor in a Leading Role, by Morgan Freeman, who's Mandela is avuncular yet unconventional, and Best Performance by an Actor in a Supporting Role, by Matt Damon, who is also compelling as Pienaar, the dedicated team captain, who comes to believe that sport has the power to bring down barriers between class, culture and race.

Alice Harrall

ROGER'S RANT 2010

2nd – 4th July

Roger's Rant aim to run a weekend that is enjoyable and fun for all the participants.

Roger's Rant believes in the promotion of traditional and contemporary acoustic folk music, song and dance, with the emphasis on taking part.

It particularly wishes to encourage young performers.

For further information

contact Roger Harrall

Tel. 01258 837371 or 07776 214813

Email: rogers.rant@gmail.com

Or visit our web page on

www.myspace.com/rogersrant

or the village web site on

www.milbornestandrew.org.uk/RogersRant

Bluebell Walk to Milborne Woods

"Trees for Dorset" Schools Project

with Mary-Ann Featherstone

"OWLS" Class set off from Milborne School heading for Milborne Woods at 9.30am on 7th May as part of the "Trees for Dorset" Schools Project and with kind permission of Mr Worrall the owner.

Once in Coles Lane the children were encouraged to look, listen and identify trees and wildlife on the way. Adults made notes on a species list for work in class later. We identified trees en route and the children recognised many of them when they reached the woods.

We noticed how an Oak tree standing alone had less leaves than the Oak trees in the woods. The children decided this could be because the woods were warmer, sheltered from the cold winds.

Our native apple and cherry trees had more subtle colours than cultivated trees from other countries. The blossom is important for bees and other insects, native trees and flowers being best as our insects have evolved with them.

We discussed the country code: follow the public footpaths unless you have permission and to leave a gate as you find it.

We talked about how some sheep had been savaged by out of control dogs and that the farmer could shoot your dog for worrying his sheep. The children were very interested and had a lot of stories of their own.

We saw buzzards, a squirrel, beetles and orange tip butterflies, which lay their eggs on garlic mustard. The bluebells were beautiful and we found orchids, discussing rare flowers as well as medicinal and poisonous plants. We heard a chiff chaff, blackbirds



and many others, which Rachel could identify, but I couldn't!

We were wood detectives and looked for man's influence on Milborne woods, discussing why pheasant



rearing and shooting can help the farmer raise money to manage the woods, also that if the woods were not managed, the farmer would not be able to spend money and time

looking after it and it would become overgrown and not as good for wildlife. The wood is coppiced and there were signs of coppicing and pollarding trees from a long time ago.

We identified ancient woodland trees and flowers, bluebells, wood anemone, primroses and polypody ferns, which grow up in the old oak trees, crab-apple, holly, hazel coppice and ash coppice.

We didn't find much rubbish, which was good.

The wind was NE we found, using a compass and it was cloudy and cold, but as we sat down for our picnic on the west side of the wood, the sun came out for 20 minutes and we suddenly found lots of insects on the move and used a bug viewer to identify a few. We used field guides for identification.

The children were really enthusiastic and uncomplaining. There was a vast amount of knowledge shared and I look forward to seeing the results of the work they do in class next week with Mrs Plant, Mrs Hewish and Miss Allen. An excellent day outside.

www.treeguy.co.uk



Chris Baxter Arborists

Caring for Dorset trees

Pruning & felling carried out to BS3998 standard, tree planting and aftercare, hedgework and stump grinding, emergency tree work & mobile sawmill, tree surveys, arboricultural consultants BS5837 standard.

ND Arb. NCH Arb. NPTCs
First Aider at Work, Aerial Rescue, Fully Insured

01258 453 299 or 01202 779 264

Office 8.30-12.30 pm Mon-Fri

treeguy@btinternet.co.uk



BUSY BEES

MILBORNE ST ANDREW UNDER 5'S PLAYGROUP

THURSDAY

9:30-11:30

MILBORNE SPORTS PAVILLON

IF YOU HAVE A BABY, TODDLER OR PRE-SCHOOL CHILD, COME AND ENJOY WARM FRIENDLY COMPANY WHILST YOUR LITTLE ONE PLAYS WITH TOYS AND INTERACTS WITH OTHER CHILDREN.

DRINKS AND SNACKS PROVIDED

£1:50 / SESSION

CONTACT: RUTH 07905358299
BUSYBEES@EVANS-FAMILY.UK.COM

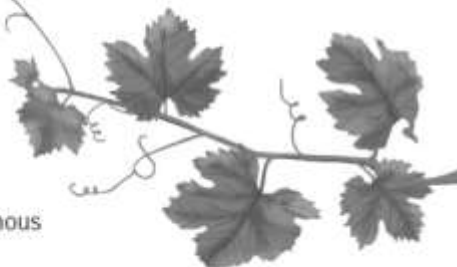


Heathcote House

GUEST
ACCOMMODATION
Tel: 01258 837219

Heathcote House is a lovely Grade II listed guest house right in the heart of Milborne St Andrew. We offer a warm welcome and friendly service, all rooms have king size beds, en-suite bathrooms and are tastefully refurbished to a very high standard.

- Aga cooked breakfast served in the conservatory under an old grape vine.
- Guests drawing room with big comfy sofas and log fires in the winter.
- A secluded garden with delightful seating areas.
- The perfect place from which to explore Dorset's unspoilt countryside and famous Jurassic coast a few miles away.



Heathcote House, Milborne St Andrew, Dorset DT11 0JG. Website: www.heathcotehouse.co.uk

ABBEY SWIMMING CLUB

The Club is based at Milton Abbey School, Milton Abbas, which has a 25 metre indoor swimming pool.

Membership is open to anyone. Members range in age from less than a year to over 80. This is a social and friendly club. Join us and keep fit.

The pool is hired for 4 sessions a week. Lifeguards supervise all sessions. RLSS National Lifeguard and Bronze Medallion courses are available as well as swimming lessons for adults and children.

Annual Membership

Adults £80. Senior Citizens £60. Juniors (17 and under) £28 as part of a family, £45 individual.
Children (3 and under as part of a family) free.

Club Sessions

Tuesdays: 7.00 pm – 9.00 pm
Fridays: 7.30 pm – 8.30 pm
Saturdays: 10.00 am – 12.00 noon
Sundays: 8.00 am – 9.00 am

Come to the pool during any club session for a free swim and pick up an Application Form or contact Robert (01258 880192) or Pat (01258 880601).

The Oak at Dewlish

A traditional village pub where you will always be offered a warm welcome in a friendly atmosphere.

Enjoy well-kept real ales and good, home-cooked food made from local produce.

Children are welcome.

Accommodation available.

Telephone 01258 837352

Dewlish Village, Dorset. DT2 7ND

MAGNA WINE COMPANY

Affordable Italian Wines

White

Pinot Grigio
Trebiano
Chardonnay

Rosé

Pinot Blush

Red

Merlot
Montepulciano
Valpolicella

£15:00p per ½ Case (Six Bottles) i.e. £2.50p per Bottle with free local delivery

Call Richard on: 01258 880571 or email order@magnawine.co.uk (Sorry but no mixed cases)

Everyday wines for an everyday price

VOYAGER TAXI



LOCAL OR DISTANCE
DOCKS AND AIRPORT TRANSFERS
DAYTIME - EVENING - WEEKENDS - BANK HOLIDAYS
SPACIOUS VEHICLE SEATS UP TO 6 PASSENGERS IN COMFORT

PHONE OR TEXT: CARON REDDING 07833 170824
EMAIL: caron_redding@hotmail.co.uk
caronredding@mobileemail.vodafone.net

IMPROMPTU

Award Winning Ladies Choir
Finalists in Radio 3 Choir of the Year 2008

In Concert

Saturday 3rd July at 7.30 pm

ST MARY'S CHURCH, PUDDLETOWN

WITH SPECIAL GUESTS: DULCIMA
Charity Concert in Aid of St Mary's Church

TICKETS: £7.00 (to include a glass of wine and canapés)

Available from:

Margaret MacLeod: 01305 848161 or Diana Wilson: 01305 848510



PJAIKEN LIMITED

INDEPENDENT FINANCIAL ADVISERS

4 Trinity Street, Dorchester, Dorset DT1 1TT

Telephone: Dorchester (01305) 266676

Fax No: (01305) 251569

advice@pjaiken.co.uk

Specialists in:

Financial Planning

Investment Advice

Inheritance Tax Planning

Pensions and Retirement Advice

Life Assurance

Health Protection



PJAiken Limited is authorised and regulated by the Financial Services Authority

Security is Strength

A date to put in your diary

ON Sunday 8th August 2010 from 11.00am-3.00pm there is going to be a village fete in aid of Weldmar Hospicecare Trust, held in the village hall and field of Milborne St. Andrew.

Formally known as Joseph Weld & Trimar Hospice and Cancer care Dorset, Weldmar Hospicecare Trust is an independent charity working in Dorset. All of our services are provided free of charge without a penny to the patient or relatives. 70% of the funds we need are raised locally; the rest is given by the NHS.

Our job is to support people in Dorset affected by cancer and other life-limiting diseases, largely at the end of life. We work both with patients and their families. We also provide respite services for people with complex long-term progressive conditions.

I work for the trust and am organising this fete in the village of Milborne to spread the word about the service we provide, raise as much money as possible for such a worthy cause as well as deliver a family fun day for all!

Stalls on the day will include wet sponge target, homemade cakes, handmade jewellery and a bouncy castle. There are also lots more fun things which will be happening throughout the day including a main arena of acts which will keep everyone entertained and also the Dorset Police will be on hand along with two police vehicles for the children.

Keep your eyes peeled for more information about the service we provide as a Trust as well as more information about this village fete, over the next few issues.

We are still looking for donations of any unwanted Books, CDs, DVDs and bric-a-brac items. If you have any that you wish to donate for the event, please bring to Joseph Weld Hospice, Main Reception, Herrington Road, Dorchester, labelled - Milborne Village Fete. Thank you.

Matt Smith



HEALTHY PETS LTD

Come and see us for full dietary advice
plus friendly service
Full range of foods, treats and toys
for your faithful friends
Specialist in wild bird food

**DELIVERIES TO YOUR
AREA EVERY FORTNIGHT**

website - www.healthypetsblandfordltd.co.uk

Unit One, Milldown Business Centre
Shaftesbury Lane, Blandford, DT11 7TD

e-mail - dave.healthypets@btconnect.com

Tel: 01258 459066



designer Gardens

Professional Garden Designer - designing and creating beautiful gardens and landscapes



 Creative and practical designs to suit all styles of garden

 Project management from design to completion

Give me a call to discuss your requirements:

Maureen Lock
16 Huntley Down
Milborne St Andrew

 Construction by experienced quality landscapers

 Planting schemes and border designs

t: 01258 837929 m: 0778 660 8776 e: maureen@designergardens.biz



In your Garden Seasonal notes and tips from Maureen Lock of *Designer Gardens* The herbaceous border

SPRING is just about behind us (hopefully), and we now look forward to those brief but colourful summer months. The typical English herbaceous border is at its best in the summer and there are plenty of gardens to visit through the National Gardens Scheme – you can find these in the NGS's Yellow Book. If you want to see a really fantastic

herbaceous border then make the trip to one of the RHS gardens at Wisley in Surrey, or Rosemoor in Devon – you will be in for a real treat.

It is the herbaceous perennial that gives us colour in the summer. Some perennials are evergreen but most will die down completely in the winter and start to emerge again in early spring. You can find a perennial for just about any situation – shady, sunny, woodland, boggy – you name it and there will be a plant to suit the conditions. Perennials will often flower more than once in the season. If you cut them down after they have finished flowering – you will more than likely be rewarded with a second show later in the summer. This applies to lupins, delphiniums, oriental poppies and many others.

When you are planning your border it is more important to consider the form of the plant – its growth habit and the shape and texture of the leaves, and then choose the colour of the flower. The flowers are soon over but it is the shape of the plant and the leaves that remain. Perennials can be used as ground cover; to fill gaps in the

border; to provide height or create soft mounds and domes.

Try and choose colours that work well with each other – for example pink and orange would not look too good together. If you look at the colour wheel you can choose colours opposite each other e.g. yellow and blue, or colours next to each other i.e. pink and mauve. Weave a

pattern through the border – I like to have a 'river' of purple alliums and blue camassia running through the shrubs, and then when these are over the purple verbena bonariensis and verbena rigida take over the mantle. At the middle to front of the border I like the pink and deep reds of the astrantia and at the very front lavender and dianthus.

For a bit of height add an obelisk to the border and cover it with roses and clematis or sweet peas. Or plant verbena bonariensis or knautia macedonica near the front/ middle of the border to add depth to the planting – its fine stems and small flowers

give it a see-through quality.

Remember though that some perennials can be a bit on the invasive side – so unless you've got the space be a bit careful with plants like solidago (golden rod), alstromeria, aegopodium podagraria 'variegatum' (variegated ground elder) and some phlox varieties. Check the label!!

Check out my new website at www.designergardens.biz
Happy gardening.



LOGS

£60.00 per load

contact

Mark Revell
Milborne St. Andrew

837 536

ROY MORBY

Painter, Decorator



57 Hopsfield
Milborne St Andrew
Blandford Forum
Dorset DT11 0LO

Tel: 01258 837125

It's a dog's life . . .

THE sun beat down, perhaps a little too hard for some of the 40 canine entrants of this year's Fun Dog Show at the May Fayre. There was a wide variety of dogs competing, from the exotic Lowchen (or 'Little Lion Dog') to a Staffordshire bull terrier, and from young pups to a thirteen year old Spaniel.

The first class, Best Veteran, was won by Bud, a nine year old Patterdale/Jack Russell terrier owned by Sarra Dellou. Picking the top three of each class was Damory Clinic vet, David Harding, who had his work cut out in the next round, Best Adult. This round had 21 dogs competing, including 2008's Best In Show, Teddy. Mr Harding finally picked out Alfie, a 19 month old cocker spaniel as the winner, owned by Margaret Macleod of Puddletown. Second place went to Blue, a whippet with Ruby, a West Highland white terrier being placed third.

The Best Puppy class proved another tricky judging task – how to separate the three best pups from fourteen? It was eventually won by Jumble, a very cute Spanish water dog, owned by Laura Henderson, who out-cuted her litter-mate Twiglet, also in the Puppy class. Afterwards, David Harding acknowledged how difficult it was, saying, "I could have picked all of them to win". Second place went to Yoji, a cocker cross, with the Lowchen taking third.

The next class proved popular, with 21 entrants trying to prove they had the Waggiest Tail. Chuck, the Staffie, owned by Simon Black wagged best and bagged top spot, beating Potter the cocker and Mojo the greyhound into second and third place. Fittingly, the winner

received some Wagg food and treats, as did all the first placed class winners.

Best Rescue Dog, kindly sponsored by Greyhound Rescue West of England, attracted eight entrants. The other seven had to go some way to beat cute puppy Clyde, the Jack Russell terrier. The pup, owned by Ray Harradine won first place, with Merlin the greyhound taking second and Rocky (Labrador) and Charlie (Jack Russell cross) third and fourth.

The last class, Temptation Alley could have been mayhem with 26 dogs lined up to walk the walk – turning their noses up at sausages, tennis balls and a 'dead rat' (it was a pheasant, Brian, but I think you knew that!) Whether it was the afternoon heat that got to them, or that they were just plain obedient, in the main, the sausages stayed uneaten. Until that is, the second round when the six best performers got to do it again – this time off-lead. This had the desired effect, with sausages being

wolfed down and three clear winners established. It was extremely close between two Labradors, Teddy and Breeze, who both walked at their handlers sides perfectly, taking no interest whatsoever in the goods on offer. Teddy, owned by Jacqui Davies, just nudged it with Geoff Hodgson's dog Breeze placed second. A highly commendable third was awarded to Oliver, the thirteen year old English springer spaniel, owned by Conal Low-Grier.

Special thanks to Brian Parkinson for providing a very entertaining commentary throughout. Also thanks to Mr David Harding of Damory Vet Clinic for his excellent eye and Wagg dog food for kindly providing prizes. And, of course, many thanks to all the entrants and their owners and handlers.

Ed Richards



Best Adult winners

Winners of "The Waggiest Tail"



Have you met . . . Melva Coe

Can you tell us a bit about yourself and your family?

I was born in Hampton Court, Surrey in 1945, went to secondary school and on to 6th form college doing a secretarial course. I was married at 19 (as we did in those days – no living together allowed!) and had our first son at 21 – and three sons by age 25. As we had our children fairly early on in marriage, we have been offspring free for over 20 years! The boys are scattered – one in Cyprus, one in the States, and the youngest remaining near to our original home for 30 years, Horsham, West Sussex,

What did you do for a living?

Following on from college, I did secretarial work, then after some years at home with the boys, worked for the national charity Action Medical Research for over 20 years. Starting as part time office worker – and moving up to Administration and Personnel Director for the whole charity – which I absolutely loved, probably because I am an obsessive organiser! We left to move to Dorset some nine years ago, and I went part time in Dorchester for a couple of years, before retiring some three years ago.

How about your time in the village?

We've lived in the village for nine years and love being here. The village, the people, the surroundings, the walks, the nearness to the sea – and the wonderful activities going on in our fairly small village. I think it puts many a town to shame! I really don't want to change anything – we came here to embrace all village life and enjoy the country. Previously



we lived in a town, which was brilliant for the boys, but always planned to move to a village for a while. We started off with a holiday home in Swanage some 20 years ago, and kept it on until we moved here. The

only change could possibly be some way of enforcing the speed restrictions in Milton Road by some of those chicanes.

Is there a downside to living here?

Only that our steep hill up Coles Lane (we live at the top) will mean that we will have to move to the outskirts of a town sometime in the next few years.

Have you got a claim to fame?

I arranged all royal visits on behalf of our charity (Prince Charles, Duke of Edinburgh, Duchess of York, Duchess of Kent). Working alongside Special Branch on day of visit and actually knowing **where the "men with the guns" were seated in the audience!** (This the **"obsessive organizer" part of me!**).

Who would be your fantasy dinner date?

As I love music so much – probably Gilbert and Sullivan, they had endless arguments about their comic operas it

would be great to be able to tell them that they will go on to be recognised as brilliant in future decades! But, thinking about it, maybe I would choose Leonard Bernstein and talk about the music for West Side Story. It would be calmer!

Do you dare to share an embarrassing moment?

One stands out when I was around six – mum had made me a lilac dress with matching pants for a small piano concert. I was so nervous and embarrassed that I never told anyone that I wanted to go to the loo – and the pants and dress eventually turned to a lovely shade of purple and "dripped" just a bit! I was hurriedly collected from the stage! Also, when visiting my middle son's new in-laws for the very first time, I asked their other daughter-in-law when her baby was due. Needless to say she was not expecting.

Have you any amazing, frightening or challenging moments in your life that you would like to share?

In 1997 my eldest son, who was a sport diver at that time, said that I should learn to dive so that I could go with him! So at the relatively late age of 52 I learned to scuba dive off Swanage pier – and passed first time! There followed an amazing 10 years of diving in many exotic places – particularly in Egypt where I went for seven consecutive years. **I've also done a parachute jump – the most frightening thing ever! Consequently I was sick all the way down! And I've trekked 90 miles through the Atlas Mountains in Morocco for the charity, which was the hardest thing I ever did!**

Can you surprise us?

Everybody knows I can talk for England! But for 10 years in Horsham I worked as a Samaritan (listening – not talking!), the very first national helpline, and ended up as Director of Training for the Branch. This meant I had to train people not to talk!

How did you get involved with the Players?

I love all live theatre, especially dance, as I spent ages from three to 19 in a dance school and used the last years helping the school with their dance routines. Also Sid and I had a brilliant 10 years in a very large musical/show society in Horsham, being in many musicals (only small parts!) with full orchestra and set with 700 customers for each of the shows – the very best of training for helping with our Players group. It has been wonderful watching all the Players get more professional, and also seeing such an increase in children (17 this year). But, apart from the Players, for the last couple of years, Sid and I have helped out at the Coffee and Computer sessions, and we are also involved with the monthly Village Lunch, I do all the secretarial bits, but Sid just eats the lunch! Oh – and I forgot – I do yoga, keep fit and belong to an indoor bowls club . . . now, have I remembered everything?

Arial view of the May Fayre



WHISTLEJACKET

EQUINE VETERINARY SURGERY

An integral part of our
rural community

Based in Milton Abbas our services include:

Modern Operating Theatre
Knockdown/Recovery complex
Fully Equipped Laboratory
BEVA approved centre for Artificial Insemination
Arthroscopy
Radiography
Ultrasound
ECG
Endoscopy
Shockwave Therapy
Dentistry
Riding School Inspection
Worming programmes and worm egg counts

We also provide a 24 hour EMERGENCY service

tel: 01258 881 777 fax: 01258 881 778

24 hr Emergency tel: 07000 944 785

www.whistlejacketvet.co.uk email: whistlejacketequine@hotmail.co.uk



Dorset Driveway Care

Local pressure washing service
for driveways, patios, walls,
conservatory roofs, soffits
and gutters etc... with care.

BEFORE

AFTER

Call Andrew on 01258 837092

**Printer, copier, fax?
The place to get it...**



• Inkjet & laser toner cartridges, faxfilm,
ribbons, paper & memPods

• Cash-Back on empty cartridges
& mobile 'phones



The Rural Business Centre, Winterborne Whitechurch, Blandford, Dorset DT11 9AW

Call: 01258 880050 or 01258 880034

e: cashback@thecartridgefamily.co.uk



Member of South Wessex Waste Minimisation Group and committed to Local Agenda 21



COUNTY TREE SERVICES

All aspects of Tree Surgery undertaken

Commercial and Domestic
Fully Certified and Insured

- Re-shaping
- Reductions
- Pruning
- Dismantling
- Section Felling
- Hedge Cutting
- Stump Removal
- Equipment Hire
- Land and Site Clearance
- 24 Hour Emergency Call Out

Free Estimates

Tel/Fax: 01258 837377

Mobile: 07971 276980



Quality Seasoned Hardwood Logs

£55 and £110

Free delivery throughout the area

Wood Chippings available

Straitford House, Milborne St. Andrew. Dorset DT11 0JA

email: info@countytreeservices.com

www.countytreeservices.com

Those bright yellow and red directional signs are all over the county again!

DORSET Art Weeks' 10th biannual event is back. May bank holiday weekend 29th May to 13th June.

It is reputedly the largest open studio in the country, one of the first starting in 1992.



Above:
'Milborne Geese'

Right:
Japonise Lotus flower



Dorset has the thumbprint of The Creators beauty; we are really privileged to live with Dorset's amazing surroundings, which I am sure has a "chicken and egg" effect on so many different creative people in the county, only one of which is art.

Milborne St. Andrew comes in the Blandford area on the art map. A western trail has been created taking in Dewlish – venue 81 Hazel Wainright; Milborne St. Andrew – venue 108 Jill Glover; Milton Abbas – venue 107 Carol Mattingley; next Winterborne Stickland – 3 venues 83 Jaqui Barrett, 84 Jo Butchell and 85 Dave Webster. Please don't be shy of exploring and looking at any of the venues and work, it is free and not intimidating.

You may see wonderful areas of Dorset you have not found before; gardens, good pubs, amazingly friendly people, beautiful art and often refreshments as a bonus. Buying a card, print or an original work is an optional blessing!

Alternatively you could cherry pick a media you like – Oils, Jewellery, Photographs, Textiles, Sculpture, Furniture, Watercolour and more.

There is so much to visit and see, even if you don't feel you are the arty type! During my visits in previous years, I have found the standard very high, diverse and interesting and greatly enjoyed the variety and enthusiasm of fellow artists.

Catalogue information can be viewed on www.dorsetartweeks.co.uk and hard copies are available from our Post Office, Libraries and tourist information centres. **You don't need to travel far as I am on your doorstep in the village!** My work is very colourful and varied: flowers, landscapes, frogs, dogs and other animals! I work mostly in watercolours. You will be very welcome.

Just follow the yellow and red!

Jill Glover

Winterborne Kingston to Combs Ditch

5–6 miles

THIS walk takes in ancient holloways, a winterborne stream, a Roman road and an early medieval boundary ditch.

Park near the church and walk east into East Street, a Roman road. The fields to the south often hold a huge roost of starlings in the winter months. After half a mile the path runs alongside a farm yard, Abbot's Court Dairy. You need to continue on the straight course of the Roman road and enter field on the right and continue eastwards to Muston Lane. Stay on the lane for a short distance and continue straight ahead into another field. Here you will have to cross a winterborne stream which may be a bit too deep for walking boots in the winter, but it dries out completely in the summer. Carry on still in a dead straight line into another field with a beetle bank on the left. This is a strip of rough grass through the middle of a crop and is designed to encourage insects that will feed on pests in the crop. Skylarks and yellowhammers are common in these fields. Walk across the track leading to the strangely-named Goschen into another field. This one has unmown margin for wildlife such as partridges. Next go through a gate (marked active badger sett), across another field and onto a track. Bear slightly left and cross into a holloway leading to Great Coll Wood. These holloways gave sheltered routes from one village to another. This one appears older than the Roman road leading to it!

Reaching Great Coll Wood bear left along the western margin, eventually reaching the medieval Combs Ditch at the northern end of the wood. This is visible as a bank at the edge of the wood and runs in a westerly direction across the fields to Little Coll Wood. Combs Ditch is one of several ancient defensive ditches in the area that were built in the Dark Ages when the country was made up of many separate kingdoms.

Turn right at the end of Great Coll Wood and follow northern edge to Rendezvous Plantation, a hazel coppice. The path enters the eastern edge of a plantation before meeting a track where you need to turn left following the northern edge of the wood until another track is reached. Turn left again and continue on to Little Coll Wood. Turn right following the northern edge of



The holloway leading to Great Coll Wood.

wood, then left around the western edge to Combs Ditch.

The final part of the walk is downhill across Muston Down. This exposed hill is often left as stubble through the winter and supports a huge population of skylarks and linnets, often hunted by merlins, our smallest falcon. After about half a mile the path turns right along a hedge then left towards a second Holloway – Muston Lane. At the bottom of the hill cross the stile on the right and walk up the hill to Hill Barn. Follow the footpath sign and diagonally cross a field to a copse. Follow the path across the track down to a stream and over a recently-repaired stile and up the hill to the village. The church tower can be seen ahead.

Bob Ford

Rainbow Pre-School

12 The Business Centre
East Luccombe, Milton

high quality pre-school education for 2-5 year olds

open 5 days a week

morning and afternoon sessions

open through school holidays

qualified and experienced staff

who are dedicated, caring, enthusiastic

set in open countryside

easy parking outside play area

NEW!! 'Stay 'n' play' on Tuesdays from 12.45-3.00pm.
Parents and carers of children from 0-5 are invited to stay
and join in a Rainbow session for £1.

Come and see what makes
Rainbow special...

Rising 5 sessions now running on Friday afternoons for
or children going to school in September.
Ring now to book your place!

Rainbow Pre-School, Luccombe, Milton Abbas 01258 880795

Reg. Charity no. 1027657

Ofsted no. EY363567

P.N.GRAY

ELECTRICAL CONTRACTORS

AGRICULTURAL - DOMESTIC - INDUSTRIAL

ESTABLISHED OVER 50 YEARS

ALL ELECTRICAL WORK UNDERTAKEN FROM
INSTALLATIONS TO MINOR WORKS

INSPECTION AND TESTING - REWIRING AND
MAINTENANCE

FULLY ENROLLED WITH THE BRITISH STANDARDS
INSTITUTE FOR SELF CERTIFICATION AND
BUILDING REGULATION PART "P"

GIVE US A CALL FOR A FREE NO OBLIGATION
QUOTATION OR JUST SOME FRIENDLY ADVICE

TELEPHONE: 01258-837354/01258-837270

MOBILE : 07774-838851



E-MAIL : sharongray@talktalk.net

GRASSBY FUNERAL SERVICE



*Still a family run business,
serving the local community
since 1861*

CHAPEL OF REST

24 HOUR SERVICE

PRE-PAYMENT PLANS

8 PRINCES STREET, DORCHESTER

Tel: 01305 262338

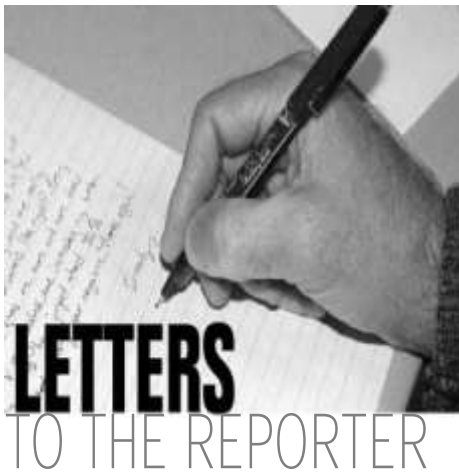
Email: info@grassby-funeral.co.uk

MEMORIAL MASONRY

Memorial Showroom at
16 Princes Street, Dorchester



www.grassby-funeral.co.uk



Dear Editor

Recently, while in the Village Hall, I studied the poster displaying the proposed MUGA. The size of which is big and will take up a large proportion of the grassed area. Is this what the village wants? Looking at the green from the Causeway it is already looks a mishmash of obstacles. The blue youth shelter and green outside gym both we were assured by the Hall Chairman were requested but I have seldom seen used. I have no criticism of the amount of effort put in applying for Grants but has this become an addiction or greed? Is the Hall continuing to apply for grants for 'improvements' without considering the legacy they are leaving future Hall users.

Who is going to pay for the upkeep and repair of all these improvements? The cost of renting the Hall has increased - is it going to continue to do so causing users to be forced out?

Name and address supplied

Dear Editor,

I wanted to write to thank the Reporter for inserting my advert last month for selling my bungalow. I was very impressed with the results of just a small advert placed in a local monthly magazine as I had several people very interested and viewings. I am hoping that this interest will result in a sale as I would love my home to go to someone who really wants to live in Milborne St. Andrew. I have really enjoyed my 10 years living here and will really miss the lovely people I have come to know but unfortunately due to my redundancy threat I have to make that painful decision to sell up, find alternative employment and downsize. I also had success with the other advert I placed *wanting a man's mountain bike and I managed to get a nice bike.* The residents of Milborne are very lucky to have such an informative, interesting and lively monthly magazine - well done to all involved, I know how much hard work you all contribute to its success.

Sue Marsh

Sponsored Cycle Rides

Thank you to all those people who sponsored me on my recent 25 mile cycle ride in aid of the British Heart Foundation. With your help I managed to collect £213.

The ride which started and finished in Wimborne attracted about 1,600 cyclist and the route which I took went as far as Witchampton before turning down the Tarrant Valley, through Shapwich and finally back to Wimborne.

Don't forget the Dorset Historic Churches Trust cycle ride on Saturday 11th September. This event takes place each year and last year over £62,000 was raised, half of which goes to the church of the cyclist. Dewlish church was only one of nine churches to achieve four-figure sums, well done Jim and team.

If you have not participated before the aim is to get sponsored for every church you visit during the day. You can go either on a bicycle, walk, or on horse back, going on your own route and at your own speed. Get together with like minded people and have an enjoyable few hours visiting some of the beautiful churches in Dorset.

Half the money you collect goes to the organisers and the other half to the church or chapel of your choice. Sponsor forms can be collected from Pat Tribe or myself, David Payne

Beauty and Massage Therapy

For all of your beauty and massage therapy requirements
contact Jo at

Spoilt Rotten

Treatments for both ladies and gentlemen include Swedish Massage, Waxing, Manicures, Pedicures, Makeup, Facials, Airbrush Tanning and many more procedures.

Fully insured and qualified treatments

Telephone 01258 837014

Stag House, The Square,
Milborne St Andrew, DT11 0JF



Providing first class care
for all your pets



Appointments available all day including
our new *early bird* appointments from 8.00am

South Walks Dorchester DT1 1DU

Tel: **01305 262913**

info@southfieldvet.co.uk www.southfieldvet.co.uk



24 hour Emergency Service

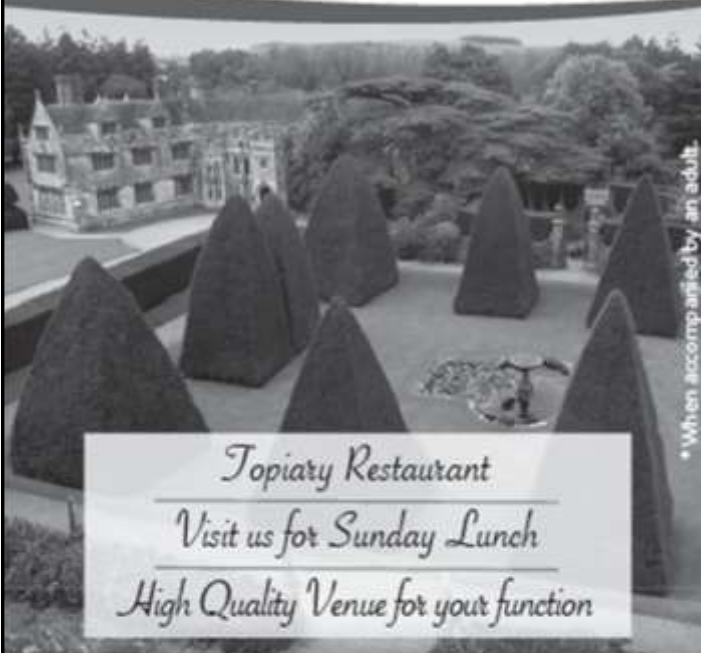


Children under 16 free entry*



Athelhampton House & Gardens

Visit one of the outstanding historic Manor houses of England

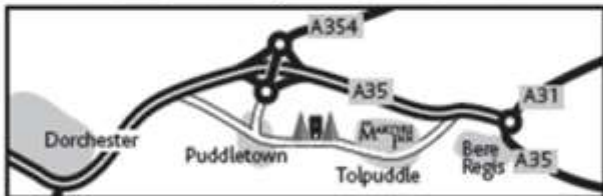


*When accompanied by an adult.

Topiary Restaurant
Visit us for Sunday Lunch
High Quality Venue for your function

Opening Times

March to October Sun to Thur 10.30am to 5.00pm
November – February Sun only 11.00am to dusk



Athelhampton, Dorchester, Dorset DT2 7LG
01305 848363 enquiry@athelhampton.co.uk

www.athelhampton.co.uk

THE MARTYRS INN TOLPUDDLE

Come and visit the Martyrs Inn and enjoy the informal atmosphere, contemporary styling, our outside large south facing patio and enjoy a leisurely drink or meal.

View our great new menu online

01305 848249

www.themartyrsinn.co.uk



Under New Management



An Englishman's home is his castle.

This was established as law by the lawyer and politician Sir Edward Coke in *The Institutes of the Laws of England*, 1628

- ◆ Do you own a property?
- ◆ Do you have children?
- ◆ Do you go on holiday?
- ◆ Do you want to protect your assets from local authority funding and Inheritance Tax?
- ◆ Are you one of 70% of the population who do not have a will?

If you can answer Yes to any of these questions, then you need a will.

Premier Wills & Probate Services can provide will services in the comfort of your own home 7 days a week, at affordable prices.

A Single Will from £50. Mirror Wills from £80.

To make an appointment with our legal advisers call:

Poole 01202 718284

Dorchester 01258 837428

or e-mail enquire@pwps.co.uk



We also specialise in Lasting Powers of Attorney, Living Wills and providing practical advice and assistance following the loss of a loved one.

Registered as a company in England and Wales no. 06899339
Registered office: 21 Church Road, Poole BH14 4DU

£5 off 1st treatment when quoting this advert

A luxury lawn is just a phone call away

- Seasonal treatments providing a lush green weed-free lawn
- Professional care at cheaper than DIY prices
- Safe for children and pets
- Local, friendly family run service backed by national resource and expertise
- Prices from £15

Greensleeves
LAWN-CARE

Quality Lawn Care at an Affordable Price
For a free quote and lawn health check call:
Freephone 0808 100 1413
Peter / Linda 01258 839255

Your LOCAL lawn care specialists www.greensleeves-uk.com



Greenways Tree Care and Garden Services

(fully insured)



- Felling
- Reductions
- Pruning
- Stump Grinding
- Hedges
- Lawn Maintenance
- Turfing
- Strimming
- Garden Fencing
- Chippings available

Tim Moore

01258 837124

07968 154708

20 years experience
Free estimates and advice
Dewlish, Dorchester

MILBORNE ST. ANDREW FIRST SCHOOL



Learning together, playing together;
all for one, one for all



SCHOOL NEWS

THE summer term started with sunshine, which was very welcome for our community Ground Force Day on Saturday 24th April. You

will have already seen a photo of some of the willing volunteers who joined us on the day on the front of last month's *Reporter*, but further thanks are needed. The village gardening club held a plant sale earlier this month and have kindly donated some plants which we will be incorporating in the landscape. Also we are very grateful to Dorset Gardens Trust who have given us a grant to enable us to buy new planters for the site. Now some of the basic repair work is completed we are also arranging some new play facilities for the children – a climbing wall and a sand pit – which will be partly funded by the monies raised when Mr Leech completed his bike ride.

The children have been out and about this term. "Owls" completed a day walk to Milborne Woods as part of their Trees for Dorset project and enjoyed the fabulous display of bluebells. "Hedgehogs" enjoyed a day trip to Kingston Maurward Gardens, a prize for the class following Louie Brown's win in the harvest picture competition in the autumn.



I'm sure many of you will have been collecting the school vouchers from Tesco during recent months. We have participated in the scheme for many years and have received equipment ranging from cricket stumps to laptops. This year our tokens must be ready for collection by Tesco on Friday 11th June and any vouchers received after that date will be wasted. Every year we receive lots of vouchers after the closing date which we can't bank, so if you have any vouchers please pop them into the school office as soon as possible and help us buy further resources for the school. We also participate in the Sainsbury Active Kids voucher scheme and Nestle box tops for books – all very welcome.

Please remember to pop into the school office if you would like any details about Mid Dorset Children's Centre. Their aim is to support parents to give their children aged 0–5 years old the best start in life by providing new learning experiences, ensuring children are safe from harm, helping families get the most from their local community and services and promoting healthy lifestyles. We operate as a contact point in the village and have details of events and flyers available for collection.



CONTACTS

If you require any information about the school, including admissions details for children please contact the school office.

Headteacher: Mrs Anne Purdy, Secretary, School Office: Mrs Helen Pugh
Chair of Governors: Mr George Legg, FOS Chairman: Mrs Angelica Cotterell
e-mail: office@milborne.dorset.sch.uk website: www.milborne.dorset.sch.uk
Tel: (01258) 837362 Fax: (01258) 837170



Queen Thorne
LANDSCAPES
RHS CHELSEA SILVER GILT
www.queenthorne.co.uk

Purveyors of the Finest Gardens

01935 850848

Extend your home and maximise your outdoor space

- Consultation
- Design
- Construction
- Ground Preparations
- Water Features
- Turfing & Seeding
- Planting
- Renovations
- Wild Flower Meadows
- Lawn Care

As seen on the **BBC**





Dorset League Two

Milborne Sports 3 Antelope 2

ON a bouncy pitch Milborne's usual passing game was made difficult in what still proved to be an enthralling encounter against uncompromising opponents. With the Lane-Enders still needing to get maximum points to keep up the pressure on their two rivals at the pinnacle of the table a close game was on the cards against a team that they had narrowly beaten at Wareham a few weeks ago. After fifteen minutes a ball over the top found Antelope's striker in a race for the ball with Wayne Gifford who came out of his area to superbly head the ball away to safety. With twenty-eight minutes on the clock Milborne replied with a driven shot from fully thirty yards by Carl Tewkesbury that seemed destined for the bottom corner of the net until the visiting custodian made a great save. Shortly after Antelope won a corner on the left flank and a quality delivery to the near post was headed with venom in to the top corner of the net to provide the visitors with a shock lead. However, Milborne did manage to equalise just before the interval when the accomplished Ed Evans delivered a bolt from the blue from twenty yards which flew in to the far top corner.

The second half began brightly for Milborne when, after fifty minutes, Tewkesbury put in Cris Pavey who seemed sure to beat the advancing keeper. However, although his first clipped shot was

saved, fortunately, the rebound fell kindly to him to calmly cross the ball for the waiting poacher Carl McClements to sidefoot home from close range. It looked as though Milborne might take the game by the scruff of the neck but midway through the half another through ball led to Antelope's front man drilling the ball in to the net. The centre pairing of Kevin Seal and the returning Cormac Lochrie then kept their attackers in check although the game still looked to be heading for a draw until the promising young pacey Josh Harman found the consistent Ross Heaton who delivered yet another fine inviting pass over the Antelope defence to find Carl McClements who gleefully thrashed the ball past the keeper from about twenty-five yards to keep him at the top of the league goalscorers chart. With only a short while to go before the final whistle there was no way back for the Antelope.

So near yet so far

DESPITE winning their last nine games in a row and scoring almost one hundred goals in the league the Lane-Enders were pipped at the post by Sturminster Marshall and Blandford Sports who both finished up with one point more than the Sports after winning their final games. Unfortunately for Milborne, draws earlier in the season cost them dearly. Indeed, they were the only team in the Dorset Leagues to lose just one game during the season, this by the narrowest of margins away at Blandford, and so they were left to rue the dropped points, this including three successive draws against mid to lower table opposition. One of the highlights of their season was an 8-3 home victory over Blandford Sports, a team who had almost seventy players signed, and including a former Leeds United player. This was matched by a victory away against Sturminster Marshall, the eventual league winners, by the slenderest of margins, with an early goal settling the proceedings. Away from home ten matches were won with one draw and one defeat whilst, at home, there were seven wins, five draws and no defeats. From this it can be seen that teams obviously like visiting Lane End and its great playing surface and the warm welcome they receive. Perhaps too welcoming bearing in mind the draws! Next season no doubt manager Paul Hammond will be looking to continue making Lane End a fortress but with a few more wins and, hopefully, support will be forthcoming on the touchline where spectators can look forward to some fine flowing football.

If promotion is achieved, Milborne can look forward to appearing in the highest league to date and this will be an achievement for a team that were languishing at the bottom of the lowest league only three seasons ago. With a reserve side having been introduced last season they are looking to continue their improvement and will welcome any players who have the right commitment and attitude to play at the highest level their ability and enthusiasm enables. For those who may have passed their playing days there are opportunities at all levels to be involved with a club that is keen to progress and also has a professional approach that bats above its village status.

Mike Lathbury, Chairman

**HASKINGS
FENCING**

Supply - Installation - Repairs
Fencing and Gates

Agricultural - Domestic - Security
Free estimates

01305 267549 / 07870 891118

25 years experience, fully insured

Open Day at Milton Abbas launches Cricket Season

THE Milton Abbas Sports Club senior cricket team got off to a fine start on Sunday 25th April with the first home game against the Dorset Wanderers.

The Sports Club launched the summer season with an open event from 12 noon for the village to see the new cycling section and try their hand at mini cricket games. We would like to thank everyone who came along and enjoyed the games and the B.B.Q. Hopefully we have kick started a few cycling and cricket members both young and old.

The senior game started at 2.30pm with the Dorset Wanderers choosing to bat first. A fine opening bowling spell from Milton Abbas

however soon had the Wanderers on the back foot and after ten overs they were 17 for 3. The Wanderers rallied in the middle order, but the winter net practise soon showed in the bowling with Stewart Rosoman and Grant Taylor both taking three wickets. Roy Sach chipped in with two wickets to leave The Wanderers all out for 111 after 35 overs.

After a fine tea Milton Abbas set about chasing the runs. First game nerves were quickly settled by new boy Ian Colmer who looked completely at ease at the crease, and breezed to an unbeaten 50 not out before retiring to allow others to finish the job. In went the under 15 lads Nick and Charlie to get some experience and then Tom House finished the game off in fine fashion by stroking three consecutive fours.

The total of 111 reached in less than 20 overs. A great result to finish off the open day. Please come along and support your village team.

Milton Abbas Under 13's Cricket

Milton Abbas v Blandford U13's - 1st league game of the season MILTON batted first, good opening bowling from Blandford restricted the scoring chances. Milton lost both openers then Ben Sach scored a very good 25 in a good partnership with Matt Handley. Milton ended up on 55. Blandford had a good opening stand with both openers scoring 13. Jack Timperley took two good quick wickets. However Blandford knocked off the runs to win by four wickets.

U13's North Dorset Cup 1st round

Milton Abbas v Shaftesbury

THRILLING Cup game, went down to the last over, with both teams in with a chance. Shaftesbury batted first on a bitterly cold evening and scored 118 for 2 in 20 overs. Good batting from Shaftesbury, Milton Abbas bowled well with Matt Handley getting both wickets.



Wanted!
Wanted!
Wanted!

Milton Abbas Sports Club
is looking to grow
its Membership



INTERESTED in Cricket? Ever tried Cricket? Come along on a Friday evening for a FREE taster session.

Friday evening is training and Juniors at 6.45pm and Seniors at 7.30pm on the sports ground above Milton Abbas, the home of Milton Abbas Sports Club. We are particularly keen to attract new junior members, but all are warmly welcomed. We have three ECB Certified coaches. Your first taster session is FREE!

For more information contact Andy Smith 01258 880310 or Colin Chastey 01258 837934.

We are also looking for cyclists

Get those bikes out of the garage or shed, dust them down and come out.

We currently hold two weekly rides. Wednesday night for about one hour from the local pub starting at 7.00pm, a great event for the whole family. Your first ride is FREE.

Sunday rides from the sports field alternate weeks of road and mtb, these are quite serious rides lasting up to three hours so technical ability, suitable bikes and fitness are required. Helmets required.

All with a CTC Mountain Bike Trail and Bikeability Certified leader.

More information and confirmation of the rides contact Adrian Goodhand 01258 880895, email cyclesafaris@btinternet.com

Wanted:

**Occasional Cleaner
for
Holiday Cottage**



We are looking for someone to assist with cleaning of a holiday cottage in the village (MSA) on an occasional basis. The job involves cleaning the cottage after guests and preparing for the next, usually on a Friday morning.

Hourly rate £8.50.

If you are interested in applying, please contact us at our email address:

p.fleetwood@btinternet.com

or call Jill Storey on (01258) 837126.

Paul & Pam Fleetwood

**Milborne 100 Club
JOIN NOW**

Please make your subscription cheques
payable to "M.S.A. F.C." to any of the
following:

John Kane 837108; Pat Tribe 837684;
June Maitland 837235; Brian Pitman

Proceeds shared equally between
St. Andrews Church and the Football Club



The Hambro Arms

Milton Abbas, Dorset

Forthcoming Events

Special Board Sunday

We are extending the promotion on Sunday evenings throughout the month of June.
We are offering 2 for price of 1 on main courses from our Specials board (the cheapest is free).

Tex-Mex Evening – Saturday June 12th

A selection of favourite Tex-Mex dishes, including nachos, ribs, chilli and enchiladas.
Come and try them all, washed down with a margarita, or a shot of tequila perhaps?
Eat as much as you like only £14.95. Reservations advisable.

Charity Quiz Sunday 13th June – Middleton Players

As usual, the event will be hosted by Graham Senior. All entry fees (£2 per person) will be donated to the charity. Please come and support this worthwhile cause.
This month's pre-quiz supper is chilli and rice. Join us from 6.30 to 7.30pm. Only £6 per person, with £1 being donated to the Charity.

Indian Curry Night – Friday 25th June

Starting from this month, on the last Friday of every month we will be offering our curry night. Sample a selection of four different homemade curries, (including Aggies extra hot one, if you dare!) with rice, poppadoms and chutneys.
Eat as much as you like only £11.95. Reservations advisable

Tex-Mex Evening

Saturday 12th June

Come and try a selection of
Tex-Mex dishes
Food from south of the Rio Grande...

To start

Nachos with melted cheese served with
spicy salsa, guacamole and sour cream

Main courses

Acapulco five bean chilli (v)

El Monterrey spicy ribs

Tijuana beef chilli

Cancún chicken enchiladas

Mexican rice

Come and eat as much as you like

Only £14.95

Reservations advisable



4th Annual Hambro Beer Festival
Friday 9th – Sunday 11th July
A date for your diary. Come and sample a
selection of real ales with an outside bar,
BBQ (weather permitting!) and live music.
More information coming soon.



Eat, drink and sleep blissfully

The Hambro Arms, Milton Abbas, Blandford Forum, Dorset DT11 0BP

Tel. 01258 880233 www.hambroarms.com