



Reporter

News and Views from around the area

Volume 3 Issue 8

September 2011

www.milbornestandrew.org.uk/reporter



Millborne St. Andrew

Shirley's super strawberry spread

See pages 3 and 21



Thanks Ed!

THE *Reporter* has said good bye to Ed Frost, the instigator of the package to save a magazine of some sort for the village. He led the team, and the look of the magazine is due in a great part to the design ideas of Ed. He also spent hours upon hours recreating many of the adverts at the beginning, and continued to design adverts through his time with us. Together with David Payne, he is responsible for how the magazine looks when it pops through your door each month.

The team now looks quite different, with several new faces, and what is more important, new ideas. Jo Perry and Josie Wright are the newest volunteers. Thank you to you both for being brave enough to join this mad band!

We have taken the decision to have the magazine printed commercially, to save the time taken to photocopy, and allowing the whole team to help in the set up each month. We are indebted to the Puddletown Benefice for allowing the use of their photocopier and hope we haven't worn it out.

So thank you to Ed and Rose Frost for all your hard work, and enjoy the free extra time.

Serial Sender's Suspended Sentence

A MALE responsible for bombarding numerous houses in Milborne St Andrew with malicious letters was charged with harassment without violence and sentenced in court. The male pleaded guilty and was given a term of 20 weeks imprisonment suspended for two years which includes a supervision requirement for 18 months. The defendant was ordered by the court to pay £85 costs to the prosecution and £200 compensation to the victim. The defendant has also been made the subject of a restraining order. Thank you to all the residents who helped with the preservation of evidence in this case. The letters retained went a long way to securing the successful prosecution of the male responsible.

FRIDAY DROP-IN coffee, cake and computers



Restarts at the village hall on
Friday 9th September 10.00am—12.00noon

Advertise with the Milborne St Andrew *Reporter*

Distributed to over 500 homes 11 times each year

Full page £175.00 p.a. / £35.00 per issue

Half page £125.00 p.a. / £20.00 per issue

Quarter page £75.00 p.a. / £10.00 per issue

Eighth page £50.00 p.a. / £6.00 per issue

Back page £240.00 per annum

Community events at the Village Hall will be advertised free of charge

Other community events at half the above rates for half page or less

Advertising copy MUST be received by the 14th of the month

msa.reporter@yahoo.co.uk

Advertisers will also be listed in the Business Directory at
www.milborestandrew.org.uk

You are all warmly invited to the popular Milborne St. Andrew

VILLAGE LUNCH

To be held on
Saturday 24th September
At the Village Hall from 12.15pm

Main Course : Sweet : Wine/Tea/Coffee : Mints
£6.00 per head (children £3.00)
BOOKING ESSENTIAL

Tickets available from the Drop-In Centre at the Village Hall
From September 9th (10.00am to 12 noon)
or call Melva or Margaret as soon as possible to reserve tickets!
01258 837453 or 837749

Welcome to . . .

Tracy, Robert and **Sara Voss** who have left Stratton to move into Stileham Bank as they "fell in love with the bungalow". They've inherited the chickens, a new experience, but Tracy said they are just so funny! And also they now have a sign outside their bungalow selling their free range eggs!

Carla Taylor and **Hayde Kirkclaid** who have moved from Salisbury with their dog Ruby now live in Stileham Bank. They enjoy walking by the sea and in the countryside.

Anne Tory, born and bred in Dorset has moved from Winterborne Whitechurch to Deverel Farm. She used to live at Ashley Barn so hasn't moved too far. Anne is very interested in anything connected with farming, horse racing, the theatre and likes to join in village events. She has already sampled the village lunch and the Wednesday Club mystery tour.

Andy and **Louise Pryer** have been married for five years and have recently moved into Hopsfield from Warmwell. They both work in Poole, but prefer the country life, in particular the towns of Dorchester and Blandford, so Milborne St. Andrew is the perfect place for them! Andy works as an electronics engineer and enjoys walking and filmmaking while Louise works in sales support and is a keen cook.

Sarah and **Michael** are busy decorating their bungalow in Bladen View.

Sue and **Laurie Benn** have moved into Little England. Sue is an animal healer treating dogs and horses, Laurie used to be a jet pilot and lecturer and still holds his pilot's licence. They are interested in gardening and village activities. They would like to know if there is a local bridge club and some information on computing.

The views expressed in this magazine are not necessarily those of the *Reporter* team.

Your *Reporter* Team

Janet Allen, Kate Chastey, Sue Gould, Heather V. Hogg,
David Payne, Jo Perry, Ed Richards
and Josie Wright

Advertising and General Enquiries: Jo Perry 01258 837957
News and Features: Sue Gould 01258 837575
Finance and Photography: Heather V. Hogg 01258 837392

Copy for the next issue MUST be received by the 14th of the month

Enquiries and copy to: msa.reporter@yahoo.co.uk
E-copy as .doc or .pub files, pictures as .jpg files please
Paper copy to Sue Gould at 28 Stileham Bank DT11 0LE

A Headmaster's Class Act – WI July

NOWADAYS, teaching does not always receive a good press, so how refreshing to have the chance to listen to the other side of the coin. Local man Rod Oakes clearly loves what he had spent most of his life doing and talked with enthusiasm and energy about his 39 years as a teacher, tracing his career back to 1967 and his teacher training days in York. What a different era then, evoking memories of the Forsyte Saga, the High Chaparral, even World Cup wins! A rugby player first and foremost, initially he had no thoughts of becoming a teacher but an accident to his arm meant he was turned down by Loughborough but accepted for teacher training at St. John's College, York. He had found his vocation. During his teaching practice with seven-year-olds in a nearby crumbling Victorian school he discovered he loved the challenge of responding to their learning needs, wherever this took him. As well as PE, he found he had an aptitude for subjects across the curriculum. His first appointment was at a boarding school in Surrey and then, back on his home patch in Leicester, he met Nelda, his future wife. They both spent enjoyable years as part of a very successful PE department. Fast forward to Dorset, and Rod and Nelda, now with two small girls, moved to Milborne where Rod took up a senior post at St. Mary's, Puddletown. Though he retired as Headmaster in 2006, Rod remains as focused and enthusiastic about teaching as he has always been.

Rod had warned us at the start that his talk would be an ideal cure for insomnia – (did I mention the 'half-twist back somersaults?') – the question and answer session at the end showed how attentive, even fascinated, we had been.

Many of our members helped Shirley Dunkley with her very successful 'Strawberry Tea' for breast cancer, and provided both refreshments and cakes. Shirley's garden proved to be an ideal venue, the sun shone and it was lovely to see so many people there. With no meeting in August members still had the chance to meet up at their annual summer outing, this year to Minterne Gardens, as well as the Dorset Show on 2nd–4th September.

We look forward to reconvening on Thursday 8th September, with 'Mutiny, Mayhem and Murder' from our speaker Shirley Critchley. Bring along a holiday souvenir for the competition.

Pat Bull

Vacancy – Village Hall

THE Trustees are looking for someone to take over the role of Secretary. Margaret Evans has done so for a good many years and following her move to Blandford now thinks that it is time to move on.

You will see from the extract of her letter to the Trustees she found the role very enjoyable and rewarding.

Dear Richard,

I am asking that you find a replacement Secretary.

I've been your secretary for a good many years. It has been a pleasure to serve the committee particularly during the last exciting years with so much improvement taking place. Please accept my congratulations on all the hard work done by the committee and best wishes for continued success.

yours sincerely

Margaret

Interested? then contact Margaret 01258 450518 to find out more.

It is a very interesting and important role and we are all hugely indebted to Margaret for the tremendous effort and contribution she has made to the effective running of the VH Charity. *The Trustees*



Milborne's summer weather report is held over until next month.



Milton Abbas and Milborne St. Andrew Surgery – 'flu clinic 2011

Date for your diary

If you are over 65, a carer, or have a chronic disease you are entitled to a free 'flu vaccination each year. Our clinic this year is on Saturday 15th October at Winterborne Whitechurch village hall. All eligible patients should receive a letter during September giving further details and times of the clinic. If you do not receive a letter in September, and think you should have a vaccination, please telephone the surgery.

100 CLUB WINNERS

Draw Date – Tuesday 5th July 2011

1st prize	£100	Malcolm Applin
2nd prize	£50	Denise Sanderson
3rd prize	£10	Rosemary Frost

Draw Date – Tuesday 9th August 2011

1st prize	£100	Sandra Northover
2nd prize	£50	Pete Jackson
3rd prize	£8	Bruce Dyer

The next draw is at 8.00pm, in The Royal Oak, on Tuesday 13th September 2011

Everyone is welcome to attend

New members always welcome. Contact June Maitland 837235 or Denise Sanderson 837049

PUBLIC NOTICE

Licensing Act 2003

Notice of Application for a Premises Licence

NOTICE is hereby given that *the Committee of Trustees of Milborne St. Andrew Village Hall* has applied to North Dorset District Council to use *the Village Hall, The Causeway, MSA, DT11 0JX*

for the provision of regulated entertainment (live music, recorded music, dancing), late night refreshment and supply of alcohol between the maximum hours of 10.00am and 12.00 midnight.

Any Responsible Authority or Interested Party wishing to make representations to this application may do so in writing to the Licensing Department, North Dorset District Council, Nordon, Salisbury Road, Blandford, Dorset DT11 7LL no later than 28th September 2011

A copy of the application may be viewed at Council Offices during normal working hours by appointment.

It is an offence knowingly or recklessly to make a false statement in connection with an application; a person is liable on summary conviction to a maximum fine being £5,000.

GERRY'S PLANTS

Shrubs, Perennials, Climbers,
Summer and Winter
Bedding and Baskets
Soft Fruit and Vegetable Plants

Come and see them at

12 The Rings
Milborne St Andrew
Tel: 01258 837386

It's all buzzing at Ladybirds

DURING June our topic was bees. We made bees using balloons and papier maché – some of you may have seen them hanging across the ceiling in the village hall. Then one sunny morning we went for a walk along Chapel Street and were shown real bee hives (no bees) by a kind resident who patiently explained all about bees and hives. From here we walked to the Grove and stood under the 'singing tree' listening and watching the bees busily collecting pollen.



We had a great summer trip to Farmer Palmers – the weather was good, there was plenty to do (including getting very wet in the water/sand area), picnic outside and happy children, parents and grandparents. As usual we had as many adults as

children on our trip proving again that Ladybirds is an experience for the whole family not just the children.

The end of the school year meant a farewell to children who will be at school in September – we wish them all the best for the future. As always they will be missed but their leaving makes way for the next intake of young children and all the excitement and challenges this provides. We also say goodbye to Kirstine and welcome Jo who steps up from being a volunteer to a 'real' member of staff. *Liz Dyer*



Milborne Ladybirds Playgroup

registered charity no. 1087441

We are a friendly community preschool with highly qualified staff who enthusiastically help children to achieve their potential through fun activities.

"Children are happy and comfortable with staff and choose from a range of activities each day."

Ofsted report 2009

Opening times:

Early birds 8:30 to 9:00, Session 9:00 to 12:00, Lunch club 12:00 to 1:00

Contact Details: Liz Dyer 01258 839117
www.milborneladybirds.org.uk

A peaceful meeting – Parish Council Meeting 20th July

I WENT to this month's Parish Council wondering what to expect. Over the last couple of months the reports reflected a lively time, with some large issues raised. But it was peaceful and dignified – what a relief! And – I was home just over an hour later. I really don't know what made it so different to previous meetings, maybe the Council were more organised, maybe there were less vocal members of the public. Three Parish Councillors sent their apologies, J Harris, D Hamilton and P Morgan, good job we have a full complement of council members now, or it could have been another “non-meeting”. Items of interest are below:

Important – you need to act now!

If you have a septic tank you need to *register it* before the end of 2011. There is no fee involved, but if the tank leaks, and it is not registered, you could be fined up to £20,000. If you have access to the internet, it can be done online. Ring the Environment Agency for more information.

The subsidising of wall and loft insulation is to be discontinued in December 2012, after that a “reclaimable loan” will be offered instead. Residents over 75 years old meeting certain criteria are exempt from this.

The Obelisk Fund

Has now been assessed for repairs. But should public money be spent on something which is on private land? It is unlikely ever to become a listed monument as it is not visible from the road, and can only be accessed from a little used footpath. The decision was made to defer any repairs, and to sound out the village residents to see what the overall view is. A report is to be presented at the Annual Parish Meeting in April or May next year. If you have a view, let the Parish Council know.

Allotments

This is the land beyond the Sports Pavilion, around the corner and abutting the main road. Having dug several test pits to assess the depth of the topsoil, and checked and discounted the suggestion that there may be old spoil on the land, and also having made tentative enquiries about any access from the main road, it has been decided to advertise and hold an initial meeting to gauge the support for any allotments on the site. This will be on Tuesday 13th September at the Sports Pavilion. (See advertisement on page 11.) *Sue Gould*

Milton Abbas Surgery – Thanks

A VERY big thank you to all of you who so kindly gave us so many jars of jam, jellies, marmalade and pickles as well as all the cakes.

As usual we sold them all, the public taste for home made goodies seems to be insatiable. We made just over £300! This will be used for equipment and such things for the surgery.

Angie Higgs and all the PPG Committee

Wednesday Social Club

July Day at Portsmouth Historic Dockyard and the Spinnaker Tower
THE flexibility of the Dockyard allowed us all to do our own ‘thing’ and we met up with some of the group for a harbour cruise around the dockyard and amazingly there were quite a few ships in port for us to see. The size of the group meant that we had to split up for the cruise. However, we all met up at the Spinnaker Tower and were greeted by the most stunning views as we sat and chatted over tea and cake.

August Evening Mystery Trip

The coach took us on a journey through North Dorset's stunning countryside it looked beautiful in the evening sunshine. We crossed the border this time and went into Wiltshire to a village near Salisbury, called “Fovant”. The ‘Emblems’ Restaurant was our destination. It commanded a wonderful view of the badges. The



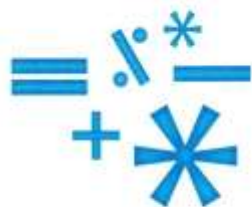
badges were carved out of the chalk hillside by troops who were stationed there at a training camp during the First World War. The badges denote their regiment or place of work as some of the men were recruited en-mass with their work-mates from their place of work. To set the scene, we had a very interesting talk on the history of the badges. We booked the entire restaurant, our meal was delicious and the evening was enjoyed by everyone. It was another ‘special event’ as we continue celebrating our 35th year.



September Outing to R.N.L.I. Poole with lunch and later, tea at Haskins Garden Centre, Longham.

Wednesday 5th October Our Autumn/Winter programme commences at the village hall from 2.00pm. Dorset Rescue Dogs will be showing us how they train their dog team for search and rescue in disaster areas all around the world.

All are warmly invited to join us at the above events. We look forward to seeing you. *Margo*



- Accountancy
- Book Keeping
- Debt Collection
- Payroll Services
- Tax Returns
- Debt Management

Hamilton Business Solutions
The perfect solution

The Nest, Milton Road,
Milborne St. Andrew
Dorset DT11 0JZ

www.hbsol.co.uk

Tel: 01258 837597

“Trees For Dorset” Bringing Schools Together – The Wild Side Of Wetherby Castle

THE Year 4 children from Milborne and Lulworth Schools, both participating in the “Trees For Dorset” Schools’ Project, came together for a walk to Wetherby Castle on 23rd June 2011, by kind permission of Mr and Mrs Frampton. The forecast was sunny intervals with a heavy shower at lunchtime and this is what we got . . . plus a bonus of a heavy shower on the way back!

The children each chose a friend from the other school and we set off through the village (a few spots of rain), with risk assessments, waterproofs, wellies all in order. We passed the old school into the Grove (the sun came out) and stopped under the “Singing Tree” the



beautiful Lime Tree that is in flower and has a sweet smell that attracts thousands of bees. While the adults divested themselves of bright green vests, the children avoided the nettles to stand under the canopy and look up. We listened . . . in silence and heard a breeze in the trees, birds and bees singing. There was an engine or two, but no-one mentioned those. A wood-pigeon was spotted by an

observant child, sitting tightly on a nest, hoping no doubt that we would soon move on!

The children are now tree experts and having identified the lime tree by the shape of its leaves, a heart shape, we moved on to identify beech, ash, hawthorn, elder and sycamore.

At the stream we stopped for a drink and explored freshwater ecology. Tadpoles, some almost frogs, basked in the warm shallow water, shoals of small fish darted past and we found a footprint in the mud. It was a water vole and Milborne is a really important site for water voles as they have declined drastically in Britain due to loss of habitat. Our stream is ideal for them, with high banks that they can tunnel into and reeds for them to eat. Water voles are often mistaken for rats, but they are herbivores and although they eat the odd cabbage, harmless.

Over the wobbly stile, by the ancient hedgerow of tall beech trees, no time to look for caddis fly larvae in the stony stream, due to rumbling tummies and a long way to the top of Wetherby Castle and our picnic site.

Through the muddy puddles, (lots of splashing!), over the next stile . . . and into a herd of cows. For some children and adults a herd of inquisitive cows can be quite a frightening sight and for some cows a herd of children, running around and shouting can be quite an exciting game, but we had a plan!

We quietly climbed the stile and grouped together with the children near the hedge and adults on the outside. The cows took no notice until they heard a tractor! Mr Mullet came and made sure everyone behaved and we all walked quietly through the field leaving the cows by the gate. Thank-you Mr Mullet.

Through the muddy gateway, a quick look at the water boatmen in the drinking trough. Marching up the hill we saw butterflies: meadow brown, small white, marbled white, small tortoiseshell and a red admiral, but the sun went in!

The lunchtime clouds gathered and the heavens opened as we rushed to the shelter of the ash trees. At least we made it! Lunch was a soggy affair, but once huddled together and eating the smiles returned and eventually the sun came out and we found a pyramidal orchid.

Walking anticlockwise (we had asked permission to explore off the public footpath) we left Milborne to the North and faced South towards the Purbecks and Lulworth. Due to Wetherby Castle being on chalk there are many rare flowers growing, if you know when and where to look. We studied a stunning bee orchid, near the path and also the horseshoe vetch, which is the food plant for the adonis

blue butterfly. We impressed on the children the need to stay on the public footpaths, unless permission is given by the landowner and also to look where you are walking . . . you may be treading on a rare flower or animal!

We circumnavigated Wetherby and took the muddy track through the woods, here you can see the old ramparts of the Iron Age fort and we imagined the Romans trying to run up the steep slopes with the Celts defending their families from above. Lastly we visited the Obelisk, built in 1761, by Edgar Morton Pleydel, when George III was on the throne. We imagined Wetherby with none of the ash trees, which now completely cover the top . . . , but that’s another story! We marched back, well some of us, and the children, though tired, did not complain, in fact I think they deserved a medal!

Mary-Ann Featherstone

Local small-ads

Small ads of less than 30 words from local, private, advertisers are published **free of charge**

For Sale – Gents mountain bike “OptimaCarrera”, 21 gear (3 x 7), dual twist grip change, 21 inch saddle tube with gel saddle, 26 inch wheels. Complete with mud deflectors, front/rear lamps, bottle cage, pump, saddle bag and accessories, plus an adjustable safety helmet. All in very good condition. £65. Contact: Sid Coe 837453.

For Sale – Car cycle carrier, suitable for carrying 2 bikes, adjustable and will fit most cars (not suitable for CitroenAX!), currently used on VW Golf hatchback. Optional number plate board. Good condition £10. Contact: Sid Coe 837453.

For Sale – Undercounter fridge £30; **Two rustic pine single bed headboards** £5 each; **Toddler’s pink inflatable castle ball pool** including 200+ balls £7.50; **Ceiling rotary fan light** £5. Phone or text 07913266230.



Thursdays 9.30 – 11.30
Sports Pavilion, Milborne St Andrew
£1.50 per session, drinks and snacks provided

If you have a baby, toddler or pre-school child, come and enjoy warm friendly company whilst your little one plays with toys and interacts with other children.

Website: www.busy-bees.org.uk
Contact: Hayley Davis 07919 156578
or Jody Moore 07855 168117



Milborne St. Andrew First School



Learning together, playing together;
all for one, one for all

School News

The summer term ended with a celebration assembly for pupils, family and friends, before a final group of Year 4 children rang the freedom bell to signal the end of the school year. The previous few weeks had included the whole school trip to Moors Valley County Park and for our Year 4s the Music For All concert. During the year they have all had the opportunity to learn the violin and this was a chance to show family and friends their talents. All the children who receive music lessons or attend dance club in school were invited to perform at the summer concert. The evening entertainment was enjoyed by all and a retiring collection allowed the school to make a further donation to Mosaic.

On a showery afternoon in July, Friends of School pulled together to host the Leavers Barbeque and Fayre. A disco for all of the children present was able to start outdoors as planned, but unfortunately the British weather forced the party goers to continue indoors. Friends of School have worked particularly hard this year, especially with the anniversary celebrations earlier in the year and the school would like to say a special thank you to all involved.

Sadly the year end also saw the announcement that Mrs Purdy will be leaving Milborne School to take up a position of lecturer in Plymouth, in which we wish her well. After a presentation at the final assembly she also had the opportunity to ring the freedom bell. The deputy headteacher Mrs Andrews will fill the role of Acting Head for the autumn term whilst the governors seek to appoint a replacement headteacher. After a restful summer holiday for all, we will look forward to welcoming staff, current and new pupils back to school for the next academic year on Wednesday 7th September.



 **Milborne First School at the heART of the community.**

Do you belong to a community group?
Do any enjoy being creative? Would you like your club to be represented in the school hall?
Then read on . . .

We would like to invite all local organisations to join in our Community Art Project...

A Year in Milborne

Each group is invited to produce a piece of art on a board (which will be provided) using any media. The boards will represent one calendar month with a link to the group's activities.
If you are interested please send a representative to our first meeting on Wednesday 14th September 2011 at 6.00pm at the school. Please contact the school office if you require further information.

Telephone 01258 837362 (after 1st September)

CONTACTS

If you require any information about the school, including admissions details for children please contact the school office.

Acting Head: Mrs Audrey Andrews **Secretary, School Office:** Mrs Helen Pugh

Chair of Governors: Mr George Legg **FOS Chairman:** Mrs Angelica Cotterell

e-mail: office@milborne.dorset.sch.uk website: www.milborne.dorset.sch.uk Tel: (01258) 837362 Fax: (01258) 837170

www.treeguy.co.uk



Chris Baxter Arborists

Caring for Dorset trees

Pruning & felling carried out to BS3998 standard, tree planting and aftercare, hedgework and stump grinding, emergency tree work & mobile sawmill, tree surveys, arboricultural consultants BS5837 standard.

ND Arb. NCH Arb. NPTCs
First Aider at Work, Aerial Rescue, Fully Insured

01258 453 299 or 01202 779 264
Office 8.30-12.30 pm Mon-Fri
treeguy@btinternet.co.uk

BERE REGIS MOT & SERVICE CENTRE

TEL: 01929 472205



(No Re-Test Fee within 10 working days)

BRAKES * EXHAUSTS

COMPUTERISED DIAGNOSTICS
LATEST EQUIPMENT FOR
MOST MAKES AND MODELS

OVER 30 YEARS' EXPERIENCE
IN THE MOTOR TRADE

Proprietor: Bill Greer
Unit 1 Townsend Business Park
Bere Regis, BH20 7LA
(At rear of Shell Service Station)

Blandford · Dorchester · Shaftesbury · Sherborne · Weymouth · Wimborne



Dorsetlettings

.CO.UK

Dorset's leading letting agent

- ▶ specialists in residential lettings since 1984
- ▶ reputation built on reliability and efficiency
- ▶ experienced, ARLA trained and qualified staff
- ▶ professional advice, friendly service



24 Market Place, Blandford, DT11 7EB

blandford@dorsetlettings.co.uk 01258 452444

P.N. GRAY

ELECTRICAL CONTRACTORS

AGRICULTURAL - DOMESTIC - INDUSTRIAL
ESTABLISHED OVER 50 YEARS

ALL ELECTRICAL WORK UNDERTAKEN FROM
INSTALLATIONS TO MINOR WORKS
INSPECTION AND TESTING - REWIRING AND
MAINTENANCE

FULLY ENROLLED WITH THE BRITISH STANDARDS
INSTITUTE FOR SELF CERTIFICATION AND
BUILDING REGULATION PART "P"

GIVE US A CALL FOR A FREE NO OBLIGATION
QUOTATION OR JUST SOME FRIENDLY ADVICE

TELEPHONE: 01258-837354/01258-837270
MOBILE : 07774-838851



ELECTRICAL CONTRACTORS
030 81106

E-MAIL : sharongray@talktalk.net

News from Milton Abbas and Milborne St. Andrew Surgery

Patient survey – We have now received the results of our annual patient survey conducted by the Department of Health. This is a survey sent to a group of patients homes. Not everyone is sent this survey but thanks to all of you who received and completed it.

Whilst our patients scored us highly and above the national average, we did note that many patients are finding it difficult to obtain a routine appointment with their usual doctor. Whilst this will never always be achievable we are reorganising our appointments system in an effort to improve access to the doctor of your choice.

This change will take place from **Monday 5th September** and will be as follows:

Normal Doctors Appointments

The doctors appointments will all be in pre-booked clinics (they will no longer take part in open surgery). This should mean that less doctor time will be taken up with the open surgery and regular appointments will hopefully become easier to obtain.

Urgent matters needing to be seen on the same day

Our Advanced Nurse Practitioner, Carol Rowland, will be available in a walk-in clinic each day between 9.00–10.30am and 4.00–5.00pm. No appointment will be needed, patients can just come to the surgery between these times.

We will be trying our best to divide all clinics between Milborne St. Andrew and Milton Abbas. You will need to telephone the surgery on the day and ask at which site the walk-in surgery is taking place on that particular day.

Milborne St. Andrew Gardening Club

We have been busy planning the Village Show to be held on Saturday 10th September, and as it looms even closer we hope that there will be plenty of folk putting in entries. Forms are available at the pub, shop and Post Office and it is not too late to enter a few things. Even if you have nothing to put in the Show, please come along and support us in the afternoon – you can help judge the entries, have a go at our Grand Raffle or have tea and try some of our home-made cakes.

We hope to put on a display of crafts, handicrafts and hobbies as well, so if anyone in the village has work they would like to show, please contact Sally (837061) or Linda (837337).

Our meeting at the end of July included a light-hearted and entertaining Quiz, with gardening questions that were not too difficult (apparently). This was won comprehensively by the dream team of Pat Tribe, Margaret Hurley and Angie Nowell.

Our next meeting will be on Thursday 22nd September, when Rob Hendley will be talking about dahlias. He is a very good speaker, so this is one evening not to miss.

Linda Harris Secretary

Milborne St. Andrew Gardening Club

invites you to take part in

THE SHOW

Enjoy a celebration of flowers, fruits and vegetables plus exhibitions of Art and Crafts

At the Village Hall

on Saturday 10th September from 2.00–4.00pm

Delicious teas available – home made cakes

Good Raffle prizes to be won

All classes are open to everyone living in the village to enter. You do not have to be a member of the Gardening Club, so start growing plants, taking photos and doing some cookery. Printed schedules, including entry forms, will be available from the Londis shop, the Post Office and The Royal Oak.

Family Announcements

60th Wedding Anniversary



Bobs and Jeff Blake of Milborne St. Andrew celebrated their 60th Wedding Anniversary on 28th July with their family, they received a card from the Queen.

Best wishes

Bryan and Sue Cooke (Son-in-Law and Daughter)

Wedding



Congratulations to Emma Johnson and Daniel King who were married Saturday 30th July. Emma has grown up in Milborne and attended Milborne First School then Puddletown Middle and finally Thomas Hardye where she met Dan. Dan is from Dorchester. They were married in St John the Baptist Church in Bere Regis and the wedding breakfast and evening reception were at Kingston Maurward. The weather was lovely and it was a wonderful day. They now live in Bournemouth with their beautiful daughter Freya. We wish them lots of love and every happiness for the future. Mum and Mark.



Cheselbourne Theatre Club



OUR **AGM** takes place on **Monday 3rd October** 7.30 pm at Cheselbourne Village Hall. All members and anyone thinking of joining are very welcome to attend this meeting, which will be followed by drinks and nibbles.

We are now booking for **Persuasion** by **Jane Austen** adapted by Tim Luscombe, on Monday 7th November. Please send money to Stephen by September 7th at the latest.

Our newsletter for the Autumn/Spring season at The Playhouse, Salisbury has been distributed to members. Anyone wanting a copy should phone Ann. *Ann Allum 880074: Stephen Terry 881524*

**Need a solicitor to help
you move house?
We can help.**

*"I'm glad that I decided to use
Blanchards Bailey again
for my conveyancing"*

Call now for
**"the utmost professionalism"
in your sale and purchase**

In the Blandford area, call:

Mark Bellman 01258 459361

In the Dorchester area, call:

Michelle Wilson 01305 217301

Regular **free advice** sessions at our Shaftesbury office
also available. Call **01747 440447** for details.

Blanchards Bailey LLP

Professional and Personal Service Solicitors

www.blanchardsbailey.co.uk
Blandford, Stairbridge, Shaftesbury and Dorchester

Please quote MS1107

Kemp & Co.

www.kempandcoproperty.com

Contact your local office now for
a **FREE** Rental Appraisal and
Expert Advice from
ARLA Qualified Specialists

Tailored Services to suit your needs
Fixed Tenant Find Fees
Free Rent Guarantee Insurance
Extensive Marketing

*Protecting You,
Protecting Your Investment*

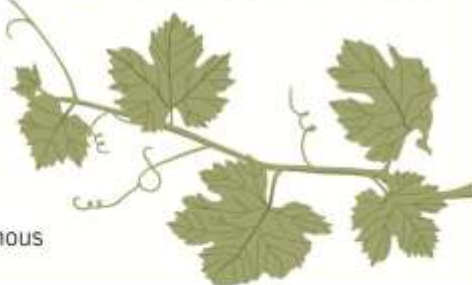
**9 Challacombe Square, Poundbury
Dorchester, Dorset, DT1 3SX
01305 251800**

Heathcote House

GUEST
ACCOMMODATION
Tel: **01258 837219**

Heathcote House is a lovely Grade II listed guest house right in the heart of Milborne St Andrew. We offer a warm welcome and friendly service, all rooms have king size beds, en-suite bathrooms and are tastefully refurbished to a very high standard.

- Aga cooked breakfast served in the conservatory under an old grape vine.
- Guests drawing room with big comfy sofas and log fires in the winter.
- A secluded garden with delightful seating areas.
- The perfect place from which to explore Dorset's unspoilt countryside and famous Jurassic coast a few miles away.



Heathcote House, Milborne St Andrew, Dorset DT11 0JG. Website: www.heathcotehouse.co.uk

B.S.T.

Building Services

Carpentry- 1st and 2nd fix
Brick and blockwork
Kitchens and bathrooms

Milborne St. Andrew

24 HR Callout

Fully insured

07808 360513

01258 837486

Building maintenance
Windows and doors
Tiling and flooring

www.bstbuildingservices.co.uk



FIRST CLASS CARPENTRY AND BUILDING WORK

And our survey said . . .

MANY thanks to the readers who returned completed questionnaires that were sent with the *Reporter* a few issues back. The results have been collated and have shown a real mix of opinion and ideas and provided useful feedback for the team. The number of returned sheets was 77, which is a little disappointing since 510 were delivered with the *Reporter*.

On a positive note though, the overall feeling towards the village magazine is overwhelmingly positive (88% of respondents), with only 4% being negative. For the remainder, it varied month to month or they had no opinion. The phrases which best summed up readers' opinion of the content were "I think it's a valuable asset to our community" (88%) and "I love the *Reporter* and read it cover to cover every month" (57%). "The content is very predictable" and "There's nothing aimed at or interesting to me" was agreed with by six respondents and two respondents respectively.

Almost all found the text and layout easy to read (97%) and the front covers are approved by most (90%). However, a large proportion of readers who replied want the cover to remain in black and white (69%) rather than see it in colour (21%), although 23% of readers say they would be willing to pay 50p if it were in colour.

As for the regular features within the pages of the *Reporter*, there are clear favourites with our readers. *Have You Met . . . ?* is enjoyed by 87% of respondents, though there were four negative votes for this regular feature. Community based content had positive ratings too from the majority; *Community Events Diary* (82%) and *Community Contacts* (78%) and *Homewatch Newsletter* (77%) and *Doctors Surgery News* (79%). Other features that were generally greeted with positive feeling were *Recipes*, *Walks*, *Letters*, *Moviola presents . . .*, *School News* and the gardening features. The *Vicar's Address* and *Church Services List* were enjoyed by just under half of respondents, although three readers specifically stated that the *Reporter* holds too much religious content.

By far the most contentious feature in the magazine is *Ask Millie* – 38 readers (49%) enjoyed her advice to villagers' problems, but 25% disagreed, reacting negatively to the column. One respondent even went as far as suggesting that we should "shoot Millie" and another said the column was a "horrid addition" to the magazine as she is "rude and not funny". Unfortunately for them, Millie will continue to attempt to solve neighbourly problems for the time being.

Other than the lynching of our agony aunt, other suggestions for improvements to the *Reporter* included those wanting to read content about the history of the village (five respondents) and also profiles on village organisations (two respondents). Short stories, travel articles, reports on controversial issues and more letters were also suggested as possible future content. Two readers suggested more articles for, and written by, young people; one other suggested features focused on the farming community and another suggested "thank you's" for those that do lots of work in the village. The *Reporter* team welcomes any submission from readers (or non-readers who may then become readers!) for future publication – please get in touch!

Another suggestion, by seven respondents, was that the *Reporter* should only publish letters when accompanied by the author's details. This was something that was recently discussed by the team and it was agreed by the majority that we continue to withhold letter writers names at their request, as long as they are supplied to the *Reporter*. It was felt that some views and opinions may not be expressed if this policy was not followed.

Together with thanks to those who completed the questionnaire, thanks also go to Kate Chastey of the *Reporter* team who compiled the survey questions and then collated and tabulated all the results. Great work, Kate!

Please note: new e-mail address for the Reporter
msa.reporter@yahoo.co.uk

DIG FOR MILBORNE



Would you like to grow your own fruit and veg? Are you passionate about being part of our active community? If the answer is even a tentative yes to either of these questions then please join us at an informal meeting on TUESDAY 13TH SEPTEMBER at 7.00pm at MSA Sports Club to discuss the possibility of The Milborne St. Andrew Allotment Corporation.



Dorset Carpet Care

cleaning with care

Dorset Carpet Care is a local, family run business specialising in the cleaning and restoration of carpets, rugs soft furnishings and stone or tiled floors, in homes and businesses throughout Dorset.

We use various technologies including the latest truck-mounted hot water extraction system that can clean deeper and more effectively than other methods.

We belong to the NCCA and IICRC, which means we are fully qualified, honestly priced and our services come guaranteed.



- ✓ hot water extraction deep cleans
- ✓ removal of stains and smells
- ✓ stain protector application
- ✓ treatments for allergies and pests



Call Andrew or Joanne
on 01258 837092

www.dorsetcarpetcare.co.uk



Beauty and Massage Therapy

For all of your beauty and massage therapy requirements contact Jo at

Spoilt Rotten

Treatments for both ladies and gentlemen include Swedish Massage, Waxing, Manicures, Pedicures, Makeup, Facials, Airbrush Tanning and many more procedures.

Fully insured and qualified treatments

Telephone 01258 837014

Stag House, The Square,
Milborne St Andrew, DT11 0JF

WOODS

(DORCHESTER) LTD

Funeral Directors

Established in Dorchester since 1878

Monumental Masons

AVAILABLE 24 HRS A DAY

Paul R. Gawler M.B.I.E. Dip.F.D. M.B.I.F.D.

Pauline J Guy Dip.F.D. M.B.I.F.D.



DORCHESTER 01305 250425



Ask Millie

– your problems solved



Last magazine's problem

In reply to the predicament of the woman who would like her daughter to move out and her mother to move in.

Millie says – The simple solution is to move your mother in and your daughter won't be able to move out quickly enough. Wouldn't that make everything easy and convenient for you? Life isn't like that. At seventy two your mother wants a little care not a new home and you need to speak firmly to your daughter to find out her reluctance to stand on her own feet. You be assertive, then she may be!

The problem of cars parking on the pavement and blocking the way for pushchairs has brought more letters in this month. The summer sunshine has tempted us out, so we walk and cars are left in very inconvenient places, narrowing the pavements, or blocking dropped kerbs or access to the bus stop. Some park in Chapel Street on Sunday so their occupants can go to church! We really are

getting too uptight about this issue. I know it's inconvenient and annoying – but we live in a village! To the car offenders who are reading this – you know who you are, so please have a little thought for your neighbours. To the rest of you – a little more tolerance. Try concentrating on things that really need attention like that nasty narrow pavement near the pub.

Dear Millie,
I'm trying to find a nice secluded walk to take my dog. I find some other dog owners are not very thoughtful when they let their dogs off the lead and I fear for my little chap actually being someone's dinner! I feel very intimidated by them and my dog runs off and won't come back.

Millie says – Your problems are twofold, both you and your dog need training. Join a dog training class, learn how to be assertive with him and other owners. Walking your dog is a good way to make new friends, so don't waste the opportunity by making it solitary.

Dear Millie
I am getting fed up with my telephone ringing and when I answer it the line either goes dead or a clearly Indian voice

telling me his name is Nigel or Peter is requesting me yet again to answer a survey on something or other. I always reply politely I'm not interested, but the phone calls keep coming.

Millie says – Any call you receive when the line goes dead is to be reported as this multiline method of calling is now outlawed. As for Nigel, the time for politeness is over. Have a powerful whistle by the phone and as soon as you identify the call blow this several times as close as possible into the receiver. This also works well for those heavy breather phone calls.

Next month's problem

Dear Millie
I am writing to see if I can get some answers from your readers. I belong to several societies in the village and I have found without exception numbers are falling. What is going wrong? My husband and I are in our forties, but the other members are at least fifteen years older. Why does no one want to join anything?

Questions and Answers to Millie and all e-mails to the Reporter at
msa.reporter@yahoo.co.uk

Letter from Australia

AT best I write to convey my younger life's recollection of Milborne St. Andrew. I trust the account perks your interest.

I was a young chap of sixteen years of age, rather a tender age by today's values but I had left home and ventured into a working life on the land. Being part of a farming training scheme run by the Methodists at North Cadbury in Somerset (Cadbury Hall no less). The departure from being a townie and a Londoner and specifically a real life Cockney and arriving at Milborne St. Andrew was a considerable change in life style. I wish to add, not an unpleasant one. The village at that time was well populated with a young teenager vital force. They had all the gifts of youth without the attached villainy of the London scene – In short they were straight off good friends from the start until my regrettable short lived stay of about four months.

I was not informed that my placement on a farm dead centre in the village by the Post Office was but to cover an absence from injury of the regular farm labourer recovering from a broken leg or some such.

The name of the farm owner was, if my memory recall is correct, was "Hancock". The residence in which I stayed for bed and meals was the house just next to the farm entrance, perhaps two homes from the Post Office; they are now all long gone as the year was late 1958.

There was one life photographic image of the village which is engraved in my mind's eye. For it encapsulates the absolute experience of Dorset which I am in eternal gratitude for the spiritual magic of your county.

Gathering early the milk herd from the farm's fields, in one specific moment I was privileged to view Heaven while still resident here on earth. The still frost covered village lay before me; for I was on the high ground. The beauty was so captivating, so complete, my wants and needs at the instance in time was staggering, totally fulfilled. Never have I since experienced such a presence of God's gift of life.

I am unsure whether your Web Site is maintained but I would sincerely hope you can read and acknowledge my sentiment from the given description.

Kind regards, Bill Stamford (now living these past 32+ years in Melbourne Australia) Bill's e-mail address is wes2001@optusnet.com.au



Dorchester

Registered Charity No. 204974

Benefits Advice Surgeries at Age Concern Dorchester

... an initiative by Dorset Welfare Benefits Partnership

Age Concern Dorchester and Dorset County Council's Welfare Benefits Team are working together to provide benefits advice and help to older people in West Dorset.

Surgeries will operate on the fourth Thursday in each month, between 9am and 12.30pm at Age Concern Dorchester, and will be by **appointment only**.

To make an appointment, please contact Age Concern Dorchester on 01305 269444 or at Rowan Cottage, 4 Prince of Wales Road, Dorchester DT1 1PW, www.acdorchester.org

Next surgery: 22nd September



Did you identify this?





OLD BARN DENTAL PRACTICE LTD

Mr John Woodward BDS. (Hons.) U. Lond. LDS RCS

Modern, cosmetic and restorative dentistry in a friendly atmosphere

Manor Farm Road,
Bere Regis
Wareham
Dorset BH20 7HD

Telephone: 01929 471023
email: oldbarn@tesco.net

Rainbow Pre-School

12 The Business Centre
East Luccombe, Milton Abbas



STAFF and trustees of Rainbow Pre-school very much regret that we are unable to re-open this term for financial reasons. We thank all past pupils and parents for their support and wish our current children well as they move on to alternative providers.

Harvest Festival

By Josie Wright

Plums red and purple reflecting the light
Piled high on the steps, what a wonderful sight.
Melons and lemons and bright tangerines,
Apricots tumbling among runner beans.
Peas in their pods and a tall sheaf of corn
With apples and pears plucked early that morn.
The eagle is polished, with wings widely spread
He peers with disdain through the grapes on his head.
Hops twining upward on lectern and pew
The grand harvest loaf on the altar to view.
The church bells are calling, as loudly they ring.
Then out peals the organ, we all start to sing,

Thank God for our harvest from home and away,
Thank God for our lives as we witness this day.

Sun shines on street fair

The sun shined down brightly on Milton Abbas on Saturday 30th July and made for a well attended and trouble free Street Fair.

With around 120 craft and commercial stalls at the Street Fair the 7,000 visitors had plenty to see and do. The Hog roast, BBQ and cream teas were enjoyed by all, along with an action packed entertainment line-up including traditional dancers, Maypole, Morris and other dancers; Straw bale tossing and singers and also a range of musicians to entertain the crowds. Police were in attendance to offer crime prevention advice and to oversee the well-marshalled bi-annual event.



Providing first class care
for all your pets



Appointments available all day including
our new *early bird* appointments from 8.00am

South Walks Dorchester DT1 1DU

Tel: 01305 262913

info@southfieldvet.co.uk www.southfieldvet.co.uk



24 hour Emergency Service



A traditional village pub where families are made welcome

in

Milborne St. Andrew

Lovely garden with a children's play area

Full menu available 7 days a week

Exciting and extensive children's menu

Excellent Sunday Roast 12.00–3.00pm

Separate Sports Bar

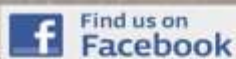
Sky Sports and ESPN

Pool and Darts

Function Room and Skittle Alley



— THE —
**ROYAL
OAK**



Now a FREEHOUSE,
come along to try our new, exciting
range of Real Ales

Sun 4th – Darts Competition

Tues 6th – Bingo

Sun 11th – Curry Night

Sun 18th – Car Boot Sale



Dog
friendly

takeaway
menu
available

tel: 01258 837 248

DORCHESTER HILL
MILBORNE ST. ANDREW
DORSET DT11 0JG

Community Contacts

More information about many community organisations can be found on www.milbornestandrew.org.uk

Councils

Environment Agency Floodline		0845 9881188
North Dorset District Councillor	Emma Parker	01258 881631
	Jane Somper	01258 471089
Parish Council – Dewlish	Clerk: Pat Gubbins	01258 881348
	Chair: Mike Claydon	01258 837314
Parish Council – Milborne St. Andrew	Clerk: Joyce Holman	01202 880512
	Chair: Janet Allen	01258 837551

General – Adult

Computer Drop-in Centre	Rose and Ed Frost	01258 837921
Computer Drop-in Sessions	Sue Gould	01258 837575
Ladies Group – Dewlish	Judith Bridgen	01258 837157
Memory Lane Swing Band	Gilly Pink	01258 837695
M.A. Neighbourcar	Nigel Hodder	01258 881709
Wednesday Social Club	Margaret Evans	01258 450518
Women's Institute	Linda Wright	01258 839255

General – Youth

Beavers	Mike Mullett	01258 839076
Cub Scouts	Mike Mullett	01258 839076
Hazelnuts out-of-school club	Hazel Barrett	01305 848588
Ladybirds (Playgroup)	Liz Dyer	01258 839117
Scouts	Mike Mullett	01258 839076
Under 5's Group – The Busy Bees	Haley Davis	07919 156578
Youth Club age 8 – 14 yrs	Sallie Maitland-Gleed	01258 837442

Police

Police – Non-emergency contact		01202 222222
Community Beat Officer	PC Dave Mullins	01202 223003
		07825 521850
Community Beat Officer (Dorch)	PC Charlie Dale	01305 222222
Community Service Vehicle	CSO Angie Partridge	01202 226000
Safer Neighbourhood Team		
Blandford Rural South	PC Dave Mullins and PCSO Luke Goddard	01202 223003 or 07825 521850

Or email blandfordruralsouthSNT@dorset.pnn.police.uk

School

Milborne 1st School		
Acting Head:	Audrey Andrews	01258 837362
Chair Governors:	George Legg	
Friends of School Chair:	Angelica Cotterell	

Special Interest

Bellringers	Pip Bowell	01258 837329
Food and Wine Society	Maureen Lock	01258 837929
Healthy Eaters	Heather Gipps	01258 837058
MSA Friendly Art Group	Elaine Anthony	01258 837089
MSA Gardening Club	Sally Dyer	01258 837061
Milborne Players	Roy Sach	01258 837033
Ranters' Folk Session	Roger Harrall	01258 837371
Round Robin Ramblers	Ian Bromilow	01258 880044

Sport

Abbey Swimming Club	Pat Cowan	01258 880601
Adult Tap Dancing Milton Abbas	Libby Goodchild	01305 268029

Archers – Crossways	Sheila Ryall	01258 837504
Athletics – Junior	David Pearson	01258 837057
Badminton	David Payne	01258 837700
British Horse Society (Dorset)	Carol Shoopman	01258 880318
Circuit Training and Pilates	Claire Barratt	01929 554999
		07946 732769
Cricket – Dewlish	Elaine Kellaway	01258 837696
Cricket Club – Milton Abbas	Andy Smith	01258 880310
Cricket – Junior (U11 – U13)	Andy Smith	01258 880310
Football – Adult	Paul Morgan	01258 837619
Football – Reserve Team	Andy Draper	07824 394436
Football – Under 15s	Grant Taylor	07879 841518
Football – Under 11s	Daryl Sims	01258 881397
Modern Sequence Dancing	Grace Davies	01258 837261
Running Group	Anne-Marie Pearson	01258 837057
Skittles – Dewlish	Frank Ross	01258 837366
Sports Club		
Chairman:	John Sanderson	01258 837049
Bookings:	Alice Harrall	01258 837371
Table-tennis (over 50's)	Sandra Shannon	01258 837253
Tap Dancing for Men and Women		01258 880523
Yoga	Sue Chapman	01305 848053

Village Hall

Dewlish		
Chairman:	Alex Carter	01258 837312
Sec:	Alex Carter	01258 837312
Milborne St. Andrew		
Chairman:	Richard Lock	01258 837929
Booking Secretary	Alice Harrall	01258 837371

The Milborne Players
www.milborneplayers.org.uk
 present
Suddenly at Home
 written by Francis Durbridge
 directed by ~~~ Caroline Nobbs

23rd & 24th September 2011
 @ 7:30 pm Milborne St Andrew Village Hall

tickets £7.00 / £6.00 concessions
 Contact Sid Coe – 01258 837453
 or LONDIS and The ROYAL OAK
 at Milborne St Andrew

Community Events Diary

Add your event to this diary by contacting the **Reporter** – tel: 01258 837921 or email: reporter@milbornestandrew.org.uk

September

- Friday 9th **Friday morning Drop-In**, Coffee, Cake and Computers re-open at the Village Hall committee room 10.00am–12noon.
- Saturday 10th **The Show** Milborne St. Andrew Gardening Club Village Hall from 2.00–4.00pm – see page 9.
Dorset Historic Churches Ride and Stride – see pages 21 and 27.
- Tuesday 13th **Allotments Meeting** Sports Pavilion 7.00pm – see pages 5 and 11.
- Wednesday 14th **Council Surgery** Village Hall 5.50pm–6.50pm
Parish Council Meeting Village Hall 7.00pm.
- Thursday 15th **Moviola** “Mao’s Last Dancer” – see below.
- Thursday 22nd **Gardening Club** talk by Rob Hendley about Dahlias. Village Hall – see page 9.
- Friday 23rd–
Saturday 24th **The Milborne Players** “Suddenly at Home” Village Hall 7.30pm – see opposite.
Village Lunch Village Hall 12.15pm – see page 2.
- Sunday 25th **Harvest Evensong** St. Andrew’s Church 6.00pm.
- Thursday, 29th **Mosaic Pamper Evening** Hamworthy Club, Poole, from 7.00pm – see page 19.
- October**
- Wednesday 5th **Wednesday Club** “Dorset Rescue Dogs” Village Hall from 2.00pm – see page 5.
Ven Paul Taylor will induct and install Rev Sarah Hillman as the Priest-in-Charge. Puddletown Church 7.30pm.
- Thursday 6th **Mosaic Charity Golf Day** Bulbury Woods Golf Club – see page 19.

Regular Bookings at the Village Hall

- Ladybirds Playgroup** Monday–Friday 8.30am–1.00pm MH (term time only)
- Beavers** Monday 6.00–7.15pm MH (term time only)
- Scouts** Monday 6.00–8.00pm CR/MH
- Players** Monday 8.00–10.00pm MH
- ABC Line dancers** Tuesday 7.30–10.00pm MH
- Cub Scouts** Tuesday 5.45–7.15pm MH (term time only)
- MSA Friendly Art Group** second and fourth Wednesday 7.00–9.00pm CR
- Wednesday Club** first Wednesday 2.30–4.30pm MH
- Gardening Club** fourth Thursday 7.30–10.00pm MH
- Healthy Eaters** Thursday 7.00–8.00pm CR
- Karate** Thursday 5.10–6.40pm MH
- Village Hall Committee** third Thursday 8.00–10.00pm
- Women’s Institute** second Thursday 7.30–10.00pm
- Coffee, Cake and Computers** Friday 10.00am–12.00 noon CR
- Youth Club** every other Friday 6.30–8.30pm MH (term time only)
- Sequence Dancing** third Saturday 7.30–10.30pm MH
- Village Lunch** last Saturday of the month 12.15–2.30pm MH/CR
- Milborne Praise!** third Sunday 4.00–5.30pm MH
- Moviola** about every six weeks, look out for the posters, 8.00pm MH
- Artsreach Events** – look out for the posters.

Check Village Hall Notice Board for any other events that are one off for you to join in with.

Other dates at the Village Hall

- Moviola**
Thursday 15th September Mao’s Last Dancer 8.00pm
Wednesday 12th October The Tempest 8.00pm
Wednesday 23rd November Midnight in Paris 8.00pm

ArtsReach

Sunday 4th December we are starting ArtsReach again featuring The Melstock Band with “Hardy Perennials”. Favourite music, songs, stories and poems, from the works of Thomas Hardy and Dorset tradition.

Regular Bookings at the First School

- Pilates** Monday 7.00–8.00pm (term time only)
- Yoga** Tuesday 6.15–7.45pm (term time only)
- Badminton** Wednesday 7.00–9.00pm (term time only)
- Circuit Training** every Thursday 7.00–8.00pm

September at the Sports Pavilion

- The Busy Bees** Under 5 Group from 9.30am to 11.30am on Thursday term time only. Contact Hayley Davis (07919156578)
- Folk Club** at 8.00pm on Friday 16th September. Contact Roger Harrall Tel. 837371 or email roger.harrall@gmail.com
- Table Tennis** from 7.00pm to 9.00pm every Monday evening. Contact Sandra Shannon Tel. 837253
- Hotpot Supper and Quiz** – Saturday 1st October at 7.30pm. Contact Roger Harrall Tel. 837371 or email roger.harrall@gmail.com

Football

- Adult F/B training** – Tuesday evening – contact Matt Hall email mattyoon@hotmail.co.uk
- Adult F/B Matches** – not announced yet
- Under 15 Football** – training – Thursday evenings. Contact Glen 01305 861290 or email adedorset@hotmail.co.uk
- 6–11 year olds** on Wednesday evenings. Contact Bob Mowlem on 01305 751930 or email bobmowlem@btinternet.com

Moviola presents “Mao's Last Dancer” at Milborne St. Andrew Village Hall on Thursday 15th September 2011

“MAO’S LAST DANCER” is the inspiring true story of Li Cunxin and his extraordinary journey from a poor upbringing in rural China to international stardom as a world-class ballet dancer. Based on the best selling autobiography, the film weaves a moving tale about the quest for freedom and the courage it takes to live your own life. The script by Jan Sardi (*Shine*) pirouettes back to China, and back in time to Shandong Province in 1972, where Li lives a humble life, going to school while his parents (Joan Chen and Shuang Bao Wang) labour in the fields. They’re poor as dirt, but rich in love and good humour. Li (played effectively as a child by Wen Bin Huan, and as a teenager by dancer Chengwu Guo) is a scrawny kid, who gets the audition and makes it through until he’s on his way to Beijing to become a dancer. The adult Li is played by Chi Cao, a principle dancer with the Birmingham Royal Ballet, and a graduate of the Beijing Dance Academy. We meet him as he steps off the plane in Houston and is greeted in the airport by Ben Stevenson (Bruce Greenwood), the British Artistic Director of the Houston Ballet. It’s a culture shock from the word go. Li gawks at tall buildings, gazes at kitchen appliances, stares goggle-eyed at cash machines spewing crisp green twenty-dollar bills. Despite a warm welcome, he struggles to feel at home in the ballet company, where he has come for a three month stint of cultural exchange. The director, Bruce Beresford (*famous for Driving Miss Daisy*), and the entire cast cover the proceedings with a light touch and just the right amount of gravitas (given the situation). Also Beresford is free with the dance sequences, and for aficionados of that art, there is plenty of nourishment. “Mao’s Last Dancer” is such a profoundly moving story, it’s hard not to get drawn in as Li must decide how much he’s willing to sacrifice for his American dream.

The village hall is open from 7.45pm and the film starts at 8.00pm. Tickets £5.00.



P J AIKEN LIMITED

INDEPENDENT FINANCIAL ADVISERS

4 Trinity Street, Dorchester, Dorset DT1 1TT

Telephone: Dorchester (01305) 266676

Fax No: (01305) 251569

advice@pjaiken.co.uk

Specialists in:

Financial Planning

Investment Advice

Inheritance Tax Planning

Pensions and Retirement Advice

Life Assurance

Health Protection



Security is Strength

P J Aiken Limited is authorised and regulated by the Financial Services Authority



HEALTHY PETS LTD

Come and see us for full dietary advice
plus friendly service
Full range of foods, treats and toys
for your faithful friends
Specialist in wild bird food

DELIVERIES TO YOUR AREA EVERY FORTNIGHT

website - www.healthypetsblandfordltd.co.uk

Unit One, Milldown Business Centre
Shaftesbury Lane, Blandford, DT11 7TD

e-mail - dave.healthypets@btconnect.com

Tel: 01258 459066



HIGH CHILSEN SILVER GILT
www.queenthorne.co.uk

Purveyors of the Finest Gardens

01935 850848

Extend your home and maximise
your outdoor space

Consultation
Design
Construction
Ground Preparations
Water Features
Turving & Seeding
Planting
Renovations
Wild Flower
Meadows
Lawn Care

As seen on the **BBC**



ROY MORBY
Painter, Decorator



57 Hopsfield
Milborne St Andrew
Blandford Forum
Dorset DT11 0LO

Tel: 01258 837125

Selling a car? Can't face the . . .



hassle?

We buy cars, bikes, campers and vans for cash at a time to suit you. Trading in elsewhere? We can usually offer more . . .

Halcyon Motors, now based in Milborne St. Andrew, is a small, friendly business and we will happily come to you. Impartial advice comes free!

Buying? Visit www.halcyonmotors.co.uk to see "warts and all" descriptions and photos of our current stock. Warranties with all cars. Part exchange welcome. Call **Don MacLeod** 01258 839152 or 07782 189555 (Mon - Sun, 8.00am - 9.00pm)

Mosaic Pamper Evening

Ladies – do you fancy being pampered?

WOULD you like to try something new or maybe just have a well deserved treat at our Pamper Evening? Therapies on offer will include Indian head massage, Reiki, manicures, pedicures, facials, make-up, etc.

There will be a bar area to sit and relax and stands selling goods such as skincare, jewellery, fashion accessories, shoes, handbags, etc.

Ticket price includes one treatment and a glass of wine. You will have the opportunity to purchase further treatments if you wish.

**Thursday, 29th September 2011, Hamworthy Club, Poole
From 7.00pm onwards**

Tickets are £10.00 each and are available from Mosaic, 3 Barnes Croft, Coles Lane, Milborne St. Andrew, Blandford Forum, Dorset, DT11 0LG 01258 837071. Please make cheques payable to 'Mosaic'.

Mosaic is a local charity offering support for bereaved children and young people across Dorset. They provide individual counselling and hold residential weekends where children and young people can share their experiences.

The charity relies on charitable donations and endeavour to raise funds through events as well as donations by groups and individuals katie@familysupport.org www.mosaicfamilysupport.org.uk

The St John Lecture 2011



in aid of the St John of Jerusalem Eye Hospital

AN evening with Julian Fellowes in conversation with his wife Emma Kitchener-Fellowes at Lulworth Castle by kind permission of Mr & Mrs W Weld on Friday 23rd September 2011.

Picnics in the grounds from 6.00pm. Castle open at 7.00pm for drinks and canapés. The evening begins at 7.45pm. A short auction of superb prizes during the interval. Tickets £35. Black tie or lounge suits.

For further information and tickets please phone Judith or Alison at St. John Ambulance on 01305 751167.

CHARITY GOLF DAY

Thursday 6th October 2011

Bulbury Woods Golf Club

Lytchett Minster, Dorset

18 Hole Team Stableford Competition for 4 players

Prizes for

Nearest the Pin Longest Drive

Cost £120 per team

(£30 x 4 players, to include coffee and bacon roll plus lunch)

proceeds to



Dorset wide support for bereaved children

www.mosaicfamilysupport.org.uk

If you or your company would like to take part,
sponsor a hole or donate a prize
please contact us on

01258 837071 or

Email: katie@mosaicfamilysupport.org

Registered Charity 1119498

Hustings Electrical Ltd

Est 1980

Now fitting solar photovoltaic energy

Would you like to produce your own energy?

Help the planet? And get **PAID!**

Call today for introductory prices and more information, fully MCS registered and NICEIC.

All other types of electrical work carried out including industrial, domestic, agricultural, commercial, test and inspection and many more.

Visit www.hustingselectrical.co.uk

or call

01258 837385

07966 403965



Large Beer
Garden

11 En Suite
Letting Rooms



The Fox Inn

Ansty

Private Parties
Welcome

Function Room
Available

Thursday 22nd September

Chinese Night . . . all you can eat just £12.95 per person
Booking advisable

£5 Main Course Lunches
Available every Monday to Friday

Fresh Cream Teas, Daily, 3.00pm - 6.00pm
For reservations please call 01258 880328 or drop in and see us

Ansty Dorchester Dorset DT2 7PN
www.anstyfoxinn.co.uk

Milton Abbas Neighbourcar



*Do you need transport for surgery visits
and other appointments?*

Milton Abbas Neighbourcar is a voluntary transport scheme covering the area served by Milton Abbas surgery. We can take you to medical appointments and social events.

Ring 01258 881709 to register and for more information.

in Arcadia
landscaping...
planting plans • garden designs • gazebos
pergolas • patios • decking • steps • ponds
turfing • paving • stonework • brickwork ...
www.inarcadia-gardendesign.co.uk
inarcadiagardens@gmail.com
t. 01305 853 731
m. 07789 076 991
garden design...


COLIN J. CLOSE FUNERAL SERVICE



*A family run business,
serving the local community of
Blandford and surrounding district*

CHAPEL OF REST
PRE-PAYMENT PLANS

24 HOUR SERVICE
MEMORIAL MASONRY

PEEL CLOSE, SALISBURY ROAD, BLANDFORD

Tel: 01258 453133

Email: info@close-funeral.co.uk



*Also at Cemetery Chapel
Sturminster Newton*

www.grassby-funeral.co.uk



Dear Editor

I wonder if you could find room in your magazine to let your readers know about our bike ride which passes through Milborne St. Andrew.

On 11th September 2011 the fourteenth annual South Dorset Bikeathon will take place, starting as usual from Crossways Village Hall at 10.30 am. The event is held to raise money for Leukaemia and Lymphoma Research. Last year £9,000 was raised by over 200 riders, an increase on the previous year's total. There is a choice of three distances that can be taken, all starting from Crossways. Firstly there is a nine mile route of mostly flat road taking in Woodsford and Moreton. The second route is 20 miles of country roads to Milborne St. Andrew and Dewlish and back to Crossways. Lastly a more testing ride is the 20 mile route extended to 30 miles taking in Cheselbourne and Piddletrenthide.

The entry fee is £3 for adults and £1.50 for under sixteens which will entitle each rider to a free T-shirt, a finisher's medal and refreshments at the village hall. For more information about the ride please contact Paul Buckrell on 01305773950, 07890047244 or spbuckrell@aol.com.

Regards, Paul Buckrell

A Harsh Reality

I read with interest the two articles in the last Reporter concerning the June Parish Council meeting and cannot entirely share the assertions expressed, especially as one article seeks to analyse my thoughts. A particularly dangerous and difficult thing to do in my case and something even I have yet to master!

I was also present and did not see the signals being made to indicate that a game of intellectual "sport" was being played and I was in a better position than most. OK, so some of the comments were expressed quite forcibly, but not threateningly. What I detected verged on passionate convictions tinged with frustration and one is entitled to make such views known to those who take on public responsibilities.

I also think that people are entitled to make comments about MPs expenses, media and newspaper proprietors, or the role of military commanders in the Iraq war the without having to be one, so "Put up" or "Shut up" cannot be used as a blanket philosophy.

Six members of the public present 'repaired to the pub' afterwards (and believe me, you needed to!) and to a person they all said that there was some 'grandstanding' going on along with some urgent leadership and teamwork issues that need to be addressed but we are early days into this new Council. This 'gang of 6' did not include the so called 'vocal gang of two'!

One of the most pertinent points of the whole evening was when the Chairman was asked to explain her vision and objectives for the future of the Council and was unable to do so in a convincing manner. It is pertinent to the fact that none of the Councillors have produced written documentation setting out their vision and core values.

So we don't know what they stand for!

If I apply for a Council Grant I am required to limit the aims and purposes of the organisation to 150 words, write a further 150 words detailing the current activities and finally explain in not more than 200 words the details of the work for which I am seeking a grant. A total of 500 words.

If I want to be a Parish Councillor in Milborne and represent the Community I should also be required to write what is in effect a Personal Manifesto. Members of the community could then judge whether:

- a) I am capable of delivering their aims and aspirations in an impartial way.
- b) I live up to the values outlined in my manifesto and deliver the agreed objectives of the Council set out in the Parish Plan.
- c) My actions and words are consistent both inside and outside of the Council.
- d) I am an effective representative of the Community as a whole.
- e) My actions, performance, stand up to the test of scrutiny found in all areas of public office.

So I say to our Councillors, "Put up" or "Stand Down" and have said so in 499 words.

Richard Lock.

Dear Editor

May I use your magazine to give my warmest thanks to everyone who came to the Strawberry Tea on 23rd July and contributed to a donation to Breast Cancer Care of £259.20. The weather was perfect and it was a great pleasure to see so many people in my garden enjoying themselves.



Special thanks must be given to members of Milborne St Andrew WI who prepared and provided all the refreshments and donated all their costs – they worked tirelessly to make the event a success and their generosity greatly enhanced the size of the donation to charity. My grateful thanks to you all. Shirley Dunkley

Dear Sirs,

I am wondering if you can help me.

My name is John Wright and I was born on 12th January 1951 in Hampstead London although I grew up in Fulham, London.

My father was Jack Sydney Wright and my mother was Ivy Kathleen Thompson. They were never married and I met my father once when I was about three years old. My mother who was about 15 years younger told me that my father was a widower with two teenage daughters and they were opposed to the match.

I have traced my father to the village of Milton St. Andrew where He was married to a Queenie Elsie Wright. My father died at Blandford Hospital on 1st January 1991. I have a copy of the death certificate. I am sure that his wife would have passed away by now as my father would have been 106 years old today.

I am looking to discover my family tree on my fathers side especially as I have two half sisters although they may have passed away by now as they would be in their 70's.

I was wondering if you could help in anyway.

Thanks, John Wright, 9 The Heights, Northolt, Middlesex UB5 4BW Home 0208 723 2506

Dorset Historic Churches Trust

On Saturday 10th September I hope to compete in the Church Ride and Stride Bike Ride (see page 27).

If you would like to accompany me on the ride or would like to sponsor me then call 837700. I would be grateful if someone could take me and my bike to Dorchester so I can start from there. David Payne



COUNTY TREE SERVICES



All aspects of Tree Surgery undertaken by
NPTC Surgeons

Commercial & Domestic

Fully Certified & Insured

- Re-Shaping
- Reductions
- Pruning
- Dismantling
- Section Felling
- Hedge Cutting
- Stump Removal
- Equipment Hire
- Land & Site-Clearance
- 24 Hour Emergency Call Out
- Free Estimates

www.countytreeservices.com

E-mail: info@countytreeservices.com

Quality Seasoned Hardwood Logs

Loads at £65 and £130

Free Delivery throughout the area

Kindling & Wood Chippings Available

Hardwood and Softwood Planking

Tel/Fax: 01258 837377

Mobile: 07971 276980

GRASSBY FUNERAL SERVICE



*Still a family run business,
serving the local community
since 1861*

CHAPEL OF REST

24 HOUR SERVICE

PRE-PAYMENT PLANS

8 PRINCES STREET, DORCHESTER

Tel: 01305 262338

Email: info@grassby-funeral.co.uk

MEMORIAL MASONRY

*Memorial Showroom at
16 Princes Street, Dorchester*



www.grassby-funeral.co.uk

Have you met . . . Jane Cherry

“Our Jane” and her “Positive Steps”

JANE is a nurse, but that description doesn't really do justice to the journey Jane has had to get there. With an Advanced Diploma in Clinical Nursing, she moved to Guys and St. Thomas' Hospital in London, doing extra qualifications in Critical Care, then back to Poole Hospital to Intensive Care becoming a Junior Sister. She passed her BSc in Health Studies (specialising again in Adult Critical Care). Her career turning point was when the then Labour Government focussed on “accountable aid” and encouraged people to be sponsored to work in Africa. Jane got sponsored for one year as a “Nurse Tutor” with the VSO in sub Saharan Africa, based in Malawi, and ended up staying for 16 months, the first trip of many. When she returned she worked in Critical Care, carried out the duties of School Nurse up at Milton Abbey School, worked on the Air Ambulances and has just returned from a second stint as nurse on the cruise ships, having spent a few months around the Caribbean. The cruise ship work allows enough flexibility for Jane to return to Malawi at different times as other opportunities arise.



Some of Jane's friends wanted to give money to help the region, however, as a realist, Jane was unhappy about just handing over money without knowing that it was spent as intended. She knew that there was a desperate need for prosthetics, and with help from other friends, from the village and elsewhere, 'Positive Steps' was born. On the website blog Jane wrote: “In Malawi there is no incapacity benefit, family support, sick leave, critical illness cover or savings for people to fall back on, and the health service does

not have the funds to support specialised medical care and training. It is called 'Positive Steps' following the success of the initial fund raising which assisted in the provision of prosthetic limbs for Mangani, Ellen, Grisella and Loveness”. As she says “If someone gives

me £10, I can account for every half penny”. Visit the webpage positivestepscharity.wordpress.com, for some inspirational stories. They also have a developing website, www.positivestepscharity.org with their mission statement: “Positive Steps is a charity dedicated to providing medical/health care assistance to people in Nkhoma and the surrounding area in Malawi, Africa. Our aim is to provide much needed care in two key ways: directly through financial support for specialist medical care and travel to territory centres in order to receive this, and indirectly by supporting the training of healthcare professionals and provision of resources where identified”.

Let me tell you about Jane Cherry, she was born at Portwey, Weymouth back in 1977. A real village girl, she went to Milborne First School, then Puddletown Middle and finally Castlefield Girls School. Her final years there were spent being bussed between the old Hardy School site and the new Thomas Hardy School site, which many of the now 30 something's agree was not ideal. Jane has lived in the village since she was a bump, Mum Sue works in Occupational Therapy, and Dad Geoff is a landscape worker. Brother Joe spends most of the time in Canada as a snowboard instructor, lucky chap.

Jane continues: The best bit of living in this village is that as a child I felt safe, I knew where I could and can go, and whose door I could knock on. I didn't really appreciate that until I lived in other places, also, it is where my parents are! And the special friends made in the village are kept for ever.

The only downside is having to get in the car to go places, but I live in lovely countryside, and you can't have it all.

I haven't got any one hero or inspiration, I have had a privileged life, and met incredible people at different times, like my lecturer at college,

Jane Reid, and so it has gone on through my life, including Maralise Potgeiter, she is an Afrikaans missionary in Malawi who advises me through our charity.

Jane says “Do I throw caution to the wind? I'm a safe person, maybe I don't like to step out of my comfort zone.” However, Jane drives all over sections of Africa, works for peanuts, and has no pension cover! I think she probably throws caution to the wind every day of her time in

Malawi. She did comment that her next stress is building a wall to complete a burns unit in Malawi. Can't imagine Jane with a trowel in her hand, and a bucket of mortar next to her!

She well remembers one embarrassing time. As an Air Ambulance nurse, repatriating very ill patients, she spent one flight leaning over a very poorly lad on the way back to land in Dublin, Ireland. She continues, “As I backed out of the aircraft, still leaning over this lad, I was unaware that his story had captured the media, and there was a circle of cameras, all focussed on my behind, together with my “spinnaker knickers” and probably “builders bum”, a bit like Bridget Jones! I wanted to pay the camera man not to show my rear view on

breakfast television!”

I've known Jane all of her life and a bit more, and it was lovely to spend an afternoon with her. She has amazed me with her work in Africa, thank you Jane for sharing it with Heather and myself.

Jane then came out with a wonderful thought, just right to end on; “I had a dream when I was 18 of working for a charity in Africa. How lucky am I to have got there . . .”

Sue Gould



Susie Edwards 

Floral Designer

* Cut flowers, bouquets and arrangements
for every occasion *

* Specialist in Wedding flowers *
* Bespoke funeral tributes *

01258 837933 07860 546468

Major cards accepted –
48 hrs. notice appreciated

I can send flowers across the UK

susie@susie-edwards.co.uk
www.susie-edwards.co.uk

Frogmore Cottage, Milton Road
Milborne St. Andrew

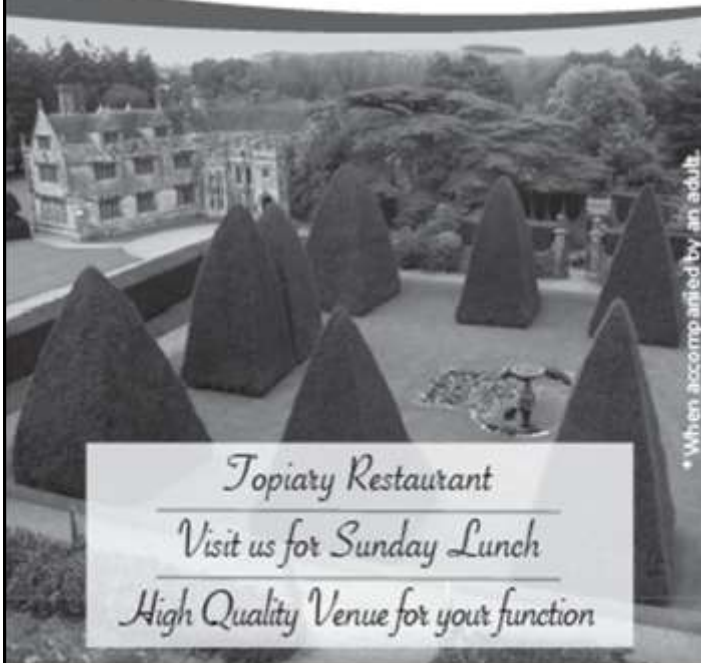
 *Your local florist*

Children
under 16 free entry*



Athelhampton House & Gardens

Visit one of the outstanding historic Manor houses of England

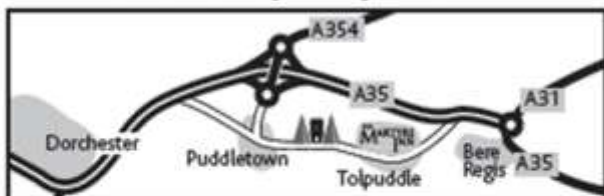


*When accompanied by an adult.

Topiary Restaurant
Visit us for Sunday Lunch
High Quality Venue for your function

Opening Times

March to October Sun to Thur 10.30am to 5.00pm
November – February Sun only 11.00am to dusk



Athelhampton, Dorchester, Dorset DT2 7LG
01305 848363 enquiry@athelhampton.co.uk
www.athelhampton.co.uk

THE MARTYRS INN TOLPUDDLE

Come and visit the Martyrs Inn and enjoy the informal atmosphere, contemporary styling, our outside large south facing patio and enjoy a leisurely drink or meal.

View our great new menu online

01305 848249

www.themartyrsinn.co.uk



Under New Management

Philip Noyes Garden Services

Tel: 07736415357 01258 839129

pbnoyes@yahoo.com

- ◆ Garden maintenance
- ◆ One off tidy ups
- ◆ Overgrown garden clearance
- ◆ Large or small gardens
- ◆ Rotovating
- ◆ Turfing
- ◆ Planting
- ◆ Garden design
- ◆ Fencing
- ◆ Landscaping
- ◆ Weed control



A luxury lawn is just
a phone call away

£5 off 1st treatment
when quoting this advert

- Seasonal treatments providing a lush green weed-free lawn
- Professional care at cheaper than DIY prices
- Safe for children and pets
- Local, friendly family run service backed by national resource and expertise
- Prices from £15

Greensleeves
L·A·W·N·C·A·R·E

Quality Lawn Care at an Affordable Price
For a free quote and lawn health check call:
Freephone 0808 100 1413
Peter / Linda 01258 839255

Your LOCAL lawn care specialists

www.greensleeves-uk.com

KMc Electrical Services

Your local Photovoltaic installer



Call for a no obligation discussion, survey and quotation

Earn income and save on your electricity bills by:

- Receiving 43.3p for every unit that is generated
- Selling unused electricity back to the supplier @ 3.1p per unit
- Save on your electricity bill by using the electricity that you generate
- All types of electrical work undertaken
- Test & Inspection of building wiring
- Extra points to full rewiring
- Professional, Quality service

Tel: 01258 881439

Mob: 07712 646131

Email: km.electrical@btinternet.com





designer Gardens
Professional Garden Designer - designing and creating beautiful gardens and landscapes

Maureen Lock
16 Huntley Down
Milborne St Andrew

www.designergardens.biz

t: 01258 837929 m: 0778 660 8776 e: maureen@designergardens.biz

-  Creative and practical designs to suit all styles of garden
-  Project management from design to completion
-  Construction by experienced quality landscapers
-  Planting schemes and border designs




In your Garden

Seasonal notes and tips from Maureen Lock of *Designer Gardens*

Your Garden in September

AS you read this, we will be moving into September – summer holidays just about over, and the landscape changing to the golden hues of late summer. Asters, sedum and rudbeckia come into their own now giving you a burst of colour that may have been lacking in August. These plants also provide a good source of nectar for insects that are finding it increasingly difficult to survive in the wild.

Dahlias too are blooming their hearts out and will keep going until the first frosts as long as you keep deadheading them to prevent them from damping off.

Dahlias were first discovered in the 16th Century in Mexico by Spanish explorers. Amazingly the dahlia was also used as a source of food and an emergency container of water to the indigenous peoples of Mexico. However, it wasn't until 200 years later that it was shipped across the Atlantic to Europe and in the 19th Century, Dutch botanists started experimenting with different forms, colours and sizes. I can remember rows of pristine dahlias grown for show and cutting in back gardens and allotments and I hated them – they looked so rigid and unnatural. Nowadays they are more often grown as part of the mixed herbaceous border and play a useful part as they flower late in the season and they come in all sizes and colours – a very versatile plant. In fact they are divided into 10 groups and then further subdivided so you should be able to find one that suits you.

If anyone has been to The Old Vicarage at East Ruston in Norfolk or Great Dixter in East Sussex you will see what I mean – a riot of colour. I saw a fabulous colour combination when I went to visit Lady Farm

in Somerset to see the prairie planting – there was a border full of bright red dahlias and planted in amongst them were tall Verbena bonariensis – it was like looking at the red dahlias through purple lace curtains – stunning.

In September the ground retains its warmth and with the addition of

rainwater, makes autumn one of the best planting seasons. The roots of the plants start to establish themselves before winter sets in ensuring a speedy start the following spring. It is a good time now to move or divide any perennials that have finished flowering. Give them a good start by replanting in prepared ground and remember not to plant peonies too deeply as they will not flower for you. Hostas and irises can also be divided now. Keep the tubers of bearded iris on the surface after you have divided them and cut the leaves back by a third to protect from wind rock.

The bulb catalogues have just started to appear and September is a good time to start planning and buying your spring bulbs (I must admit however, that I rarely get round to it until November and then all the really good varieties have sold out – *Note to self: must be better organised this year!*). If your bulbs arrive by post, unpack them and leave in a cool, airy place (out of the reach of mice) until you can plant them. I like to start planning what I'm going to put in pots to give me a bit of colour in the winter – use evergreen grasses and small shrubs as they are very low maintenance but continue to look good in all weathers, and then you can infill with pansies, cyclamen, or polyanthas as they come into season.




CHRIS PERRINS
CHIMNEY SWEEP
www.csweep.co.uk

Also:

- HANDYMAN ▪ INSIDE/OUTSIDE PAINTING
- GARDEN MAINTENANCE ▪ HEDGE TRIMMING/LAWN MOWING

Enquiries welcome, call: 01305 849470 / 07824 698109





THE BENEFICE OF PUDDLETOWN, TOLPUDDLE AND MILBORNE WITH DEWLISH
PART OF THE CHURCH OF ENGLAND IN THE DIOCESE OF SALISBURY

Transitions

As I write this we are nearing the end of July. It is the last day of term and parents have gathered for the Year 8's leavers' assembly at the Middle school. We are celebrating all the achievements and contributions the children have made to school life throughout their time there. We have much to celebrate and I am still waiting for the moment I can give the final blessing when we send the children on to new and exciting opportunities. They will be moving up to the Thomas Hardy School in September. I remember this cohort of children when they started their school career. They are a lovely year group and I suspect the reason this assembly seems to be going on for ever is because the head teacher is so proud of them that he really doesn't want to let them go. However, if they are to grow into the people God wants them to be he must allow them to move on trusting that their experience at the Middle School has given them a sure foundation.

It seems to me that August and September will be times of transition for lots of people. Sixth formers around the country are waiting for their exam results and soon many parents will also be facing the moment when they have to 'let go' trusting that all they have done for their children will prepare them for the next stage of their journey – be it a new job or university.

August and September are also times of transition for our benefice. By now, the Rev Sarah Hillman will have moved into the Vicarage at Puddletown. Please keep Sarah in your prayers and make her welcome in the in-between time as she prepares to start work here as our vicar.

We will be celebrating her new ministry among us at a special service at Puddletown Church on 5th October at 7.30pm when the Ven Paul Taylor will induct and install her as the Priest-in-Charge. It will be good to see folks from across the benefice at this special service. All are welcome.

When faced with uncertainty and those moments of transition in our lives there is one constant and that person is God. Here is an old prayer from the Northumberland community to remind us of that.

Let nothing disturb thee, nothing affright thee;
All things are passing, God never changeth!
Patient endurance attaineth to all things;
who God possesseth in nothing is wanting
alone God sufficeth. Amen.

Sarah Godfrey

MILBORNE ST. ANDREW CHURCH NOTES

Toilet and Kitchenette Project go-ahead

TOWARDS THE END of July we received the good news that we have been granted permission from the diocese to go ahead with this project. We have been fund raising for some time and, thanks to a grant from the Erskine Mutton Trust, we have almost half the money we need. There are other grants that we can apply for but we must do our own share as well and so we will be redoubling our efforts. One event already planned is a concert in late October. Full details will be in the next edition of the *Reporter*. Meanwhile, if you still have a 'Flush Fund' jar (or even if you don't) please keep saving those pennies!

The Milton Abbas Street Fair began with unpromising grey skies and drizzle. As people unloaded vans and cars and set up stalls the mood was subdued. Fortunately the rain stopped, the skies cleared and there was even some sunshine by the end of the afternoon. The weather did not deter the crowds however: an estimated 7,000 people attended. The St. Andrew's stall, selling bric-a-brac and crafts, raised a little over £300 for church funds. (Our treasurer, Andy, found an unexpected talent for persuading people to buy mini-teddy bears!). Altogether it was an enjoyable and worthwhile day. Many thanks to all those who contributed in any way.

The Living Churchyard

Once again we took part in the competition and this year gained Very Highly Commended.

CHURCH SERVICES September 2011

Thursday 1st SEPTEMBER

12.00 Lunch-time Communion Milborne

4th SEPTEMBER – Trinity 11

9.30am Family Communion Milborne
11.00 Holy Communion Puddletown
with Sunday seekers and creche
11.00 1662 Morning Prayer Dewlish
4.00pm. Tolpuddle Praise! Village Hall

11th SEPTEMBER – Trinity 12

8.15am 1662 Said Communion Puddletown
9.30 Methodist Joint Service St. John's
Tolpuddle
9.30 Parish Communion Milborne
11.00 Family Service Puddletown
Village Hall
11.00 Family Communion Dewlish

Thursday 15th SEPTEMBER

12.00 Lunch-time Communion Puddletown

18th SEPTEMBER – Trinity 13

9.30am Harvest Family Communion Tolpuddle
9.30 1662 Said Communion Milborne
11.00 1662 Morning Prayer Puddletown
11.00 Holy Communion Dewlish
4.00pm Milborne Praise Milborne
Church

25th SEPTEMBER – Trinity 14

9.30am Holy Communion and Baptism Tolpuddle
11.00 Family Service Dewlish
11.00 Harvest Festival Puddletown
6.00pm Harvest Evensong Milborne

Flowers – w/e Saturday

3rd and 10th September Eve Richardson
17th September Pat Tribe
24th September HARVEST
All helpers please

Church Cleaning – w/e Saturday

3rd September Carolyn Martin and Elizabeth Walker
10th September Margaret Hurley and Eva Stockley
17th September Geoff and Pat Bull
24th September John and Ann Miller

Church Contacts

Associate Priest
Sarah Godfrey 01258 839067
Church Wardens
Milborne St. Andrew
Eva Stockley 01258 837468
Pat Tribe 01258 837684
Dewlish
Jim Burg 01258 837466
Sue Britton 01258 837218
www.milborneandrewchurch.org.uk

The judges made some very helpful suggestions which can be acted upon if we have another working party. They pointed out that the Irish yews have splayed out and need tying in. This could be done by strong men with long ladders and horticultural wire. They suggested that a rough area behind the church could have a winding path cut through it so that what is growing there can be seen. There is the usual autumn strimming to be done and compost heaps need to be dug out (one needs re-making). The small wild flower meadow is the best it has been this year. Once cleared, the ground needs to be scarified (rakes needed) and more seed scattered. To achieve as much of this as possible a working party is planned for **Saturday 17th September** starting at 10.00am. There will be the usual refreshments and, if you would like to take away some compost, please bring bags.

Don't forget the **Historic Churches Trust sponsored "Ride and Stride"** on **Saturday 10th September**. It is not too late to enter and raise money for the Trust and the church of your choice. Full details from Pat Tribe (Tel: 837684).

Milborne Praise: We open the autumn programme at church on **Sunday 18th September** at 4.00pm. Please see notice board for further details.

Harvest Evensong

This year we have decided to celebrate our Harvest Festival in the evening of **Sunday 25th September** starting at 6.00pm. There will be no 9.30am service. We will be decorating the church on Saturday morning, 24th September. Please bring along your gifts of produce between 10.00am-12noon.

St. Andrew's Church will be running a Tombola stall at "**The Piddle Fair in the Square**" event in The Square in Puddletown on **Saturday 1st October** (11.00am-4.00pm). We would be pleased to receive any bottles, tins or trinkets for prizes. Please contact Pat (837684) or Eva (837468).

At the **Coffee Morning** on 9th July there were lovely home-made cakes to enjoy with coffee, also a good variety of goods to purchase and take home for tea. The 'Nearly New Clothing Stall' was very well equipped, unsold items were taken to a charity shop. A tremendous number of raffle prizes all went to make a profit of £239 for the 'Flush Fund'. Many visitors from the caravans at the Sports Pavilion for Roger's Rant came to join us. We would like to thank everyone who provided cakes, clothing and raffle prizes and helped on the stalls. Very generously, June Maitland, who was the instigator of having a coffee morning, paid for the hire of the Village Hall. The following day Ann Hinchliff and her folk musicians played at the morning Parish Communion Service. In the evening many more very talented musicians entertained just over 70 people at a concert in St. Andrew's Church. The donations at the concert gave the church another £92 towards the 'Flush Fund'. Many thanks to Roger and Alice and their team for organising the music and involving the church in their weekend activities.

Eva Stockley and Pat Tribe (Churchwardens)

DEWLISH CHURCH NOTES

Helping victims of African famine

WE HAVE just had our annual Farm Service, which this year was held at the farm of Wakely and Caroline Cox. We were blessed with glorious weather and there was a good congregation. It all seemed appropriate to be thanking and praising God with harvesting and hay tedding going on around us.

Ever mindful of our good fortune, our collection, amounting to about £200, has been given to help relieve the famine victims in the Horn of Africa.

Many thanks to Wakely and Caroline for allowing us to use their delightful garden once again. Thanks also to Jim for leading the

service, and to Ed and Adam for providing and operating the sound system.

On **Thursday 15th September** Mrs Sue Britton of Parsonage Farm, Dewlish, is holding a **Coffee Morning** (10.30am-12noon) at her home to raise money for church funds. There will be a cakes and produce stall and a raffle. We shall be grateful for your support.

Our **Harvest Festival** this year is on **Sunday 2nd October** at 6.00pm, when we will be pleased to receive the children's harvest gifts. The **Supper and Auction** will be on **Monday 3rd October** at 7.00pm in Dewlish Village Hall. Please reserve your places by contacting Mrs Margaret Groves (Tel: 01258-837617).

Good weather for our fund-raising

We were so lucky to have good weather for both our fund-raising events in June and the annual Parish Picnic on 3rd July.

The Coffee Morning, hosted by Mrs Daphne Berridge, raised £184.50. It was lovely to meet up with so many of our friends and neighbours. Thank you so much, Daphne, and thanks to all the helpers, and for the donations to the raffle and stall.

Three days later Mrs Audrey Penniston opened her delightful garden, which looked wonderful as always. Teas were served, and we thank Audrey and all those who helped on the day. Audrey's daughter, Victoria, has painted another lovely picture of flowers, which is being raffled. The draw will take place at the Harvest Supper in early October. Audrey would be very happy to sell tickets for the painting should you like one.

We all had a good time at the Parish Picnic on the Village Green. Jim led the service, and Ed and Adam operated the sound system for us. Thank you very much! We each brought a plate of food which, once more, was delicious.

Daphne Burg

The following poem was recently unearthed by Jim. He thinks it is rather relevant to our current church situation! – DB

The Old Country Woman

By Barbara Robinson

I've been coming here on Sundays for seventy year or so
'Twas here that I was Christened and 'tis here I'll want to go.
Now I know you all gets vexed about changes in belief.
Well, frills on top don't matter if you're comfy underneath.
I never lets it bother if I'm High or Low or what,
While I've got me Ten Commandments I shan't go wrong a lot.
Now, I likes old-fashioned prayer book and they like A.S.B.,
And they can have what pleases them, and I'll read what suits me,
And half the hymns we sing these days I've never heard before,
But I can stand and listen, and perhaps I'll learn some more.
All these guitars and instruments – it's no more than they had
Afore they put the organ in, when my Granddad was a lad,
And I don't suppose God'll worry, He wouldn't make a fuss,
As long as all the singing's meant for Him and not for us.
We've had clergy coming straight from college, full of summat new,
From incense on the altar to posters in the pew.
And I lets 'em all get on with it, 'cos all these fashions pass,
And you'll still do the flowers, me dears, and I'll still clean the brass.
I got this seat I always have, no draughts and nice and near,
So I can hear the organ and see the vicar clear,
And I tells God what's been happening, and what a week I've had,
And I thanks Him for the good times, and He helps me through the bad,
'Cos all that really matters, as far I can see,
Is that I, down here, remembers Him, and he remembers me.

North Dorset District Council Surgery in Milborne

THERE will be a surgery in the Village Hall before the Parish Council Meeting on 14th September between 5.50pm and 6.50pm. We are attempting to find a more convenient time to meet residents who wish to talk with us.

Jane Somper and Emma Parker

LOGS

£65.00 per load

contact

Mark Revell

Milborne St. Andrew

837 536

Printer, copier, fax?
The place to get it...



• Inkjet & laser toner cartridges, faxfilm, ribbons, paper & memPods

• Cash-Back on empty cartridges & mobile 'phones



The Rural Business Centre, Winterborne Whitechurch, Blandford, Dorset DT11 9AW

Call: 01258 880050 or 01258 880034

e: cashback@thecartridgefamily.co.uk



Member of South Wessex Waste Minimisation Group and committed to Local Agenda 21

Sohani Gonzalez

B.A., M.C.H., R.S.Hom

Registered Homeopathic Practitioner with over 28 years experience in Sussex, London and Dorset

• Nutritional and Dietary advice

• Allergy Testing

Homeopathic medicine is over 200 years old. It is popular worldwide because of its effectiveness, safety and its ability to treat all kinds of physical and emotional problems.

Consultations available in the Blandford Forum and Dorchester areas

Please call for an initial appointment

01258 839043

www.sohani-homeopathy.com

HASKINGS FENCING

Supply - Installation - Repairs
Fencing and Gates

Agricultural - Domestic - Security

Free estimates

01305 267549 / 07870 891118

25 years experience, fully insured

In need of a Window Cleaner?

Darren and Sarah

for a friendly and reliable service

Clear vision

Fully insured for complete peace of mind

For that clearer vision just call:

01929 462273 / 07704 656777

Domestic and Commercial

Gutters Downpipes Facias Soffits

Conservatories Flash Roofs

Milborne 100 Club

1st PRIZE £100 2nd PRIZE £50
3rd PRIZE depends on number of members paid

For information contact:
John Sanderson Football Club 837049
June Maitland Church 837235
Pat Tribe Church 837684
Denise Sanderson Collector 837049

BE IN IT TO WIN IT!

**Old Washing Machines, Cookers,
anything metal
removed free
of charge**



REGISTERED CARRIER

Please call: **01258 837100**



**FISHY FRIDAY
LUNCHTIME
SPECIAL**



Fish, chips and peas
plus
1/2 Pint of Beer, Cup of Tea or Coffee
All for £6.95



**THE OAK
at
Dewlish**

At The Oak at Dewlish, we pride ourselves in serving a regularly-varying range of real ales. We also want you to enjoy every mouthful of our food. This is why we strive to bring you delicious dishes that combine the best of English pub food, with ingredients from the local farms and nearby producers.

We have 4* self catering accommodation and 2 newly furnished ensuite B and B rooms.

Tel: 01258 837352



www.oakpub.co.uk

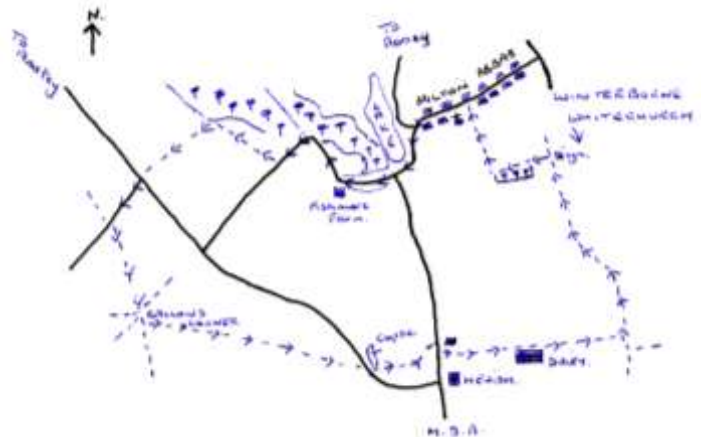
enquiries@oakpub.co.uk

A circular walk from Milton Abbas along lanes and bridleways (5¼ miles)

PARK alongside lake just before you enter village street.

Walk back towards Milborne St. Andrew and take the lane straight ahead where the road bends to the left. The first part of the walk is uphill towards Fishmore Hill Farm, now an equine veterinary centre. When the lane levels out carry on around a left hand bend for about 200 metres. Turn right along a grass and gravel path. After about 500 metres this path bears round to the left. Pass a ruined barn on your right and soon afterward you will come to a crossroads.

Cross over this road and take the lane straight ahead for about 300 metres. Look out for the bridleway fingerposts to your left and right. Turn left here. This bridleway is Bramblecombe Lane and leads to Gallows Corner. After 500 metres you will see one bridleway to your left and two heading off to your right. Ignore these and carry on for a few more metres looking out for a gate on your left. (The metal gate has vertical bars to it.)



Enter the field and continue straight ahead. Continue through a gap in the hedge into the next field and continue to a double gate on either side of a small wooded enclosure. Once in the next field cross it diagonally to your right looking out for a farm gate at the bottom which leads into the road to Ansty Cross.

Cross the road and go through the farm gate opposite. There is a copse ahead of you. Walk uphill to the right of this and carry on bearing slightly to your left through the maize (no path) until you come to a fence with corn on both sides. Keep the fence on your right.

Head for a wicket gate into a horse paddock and on downhill to the Milton Abbas – Milborne road. Turn right then left after a few metres up a tarmac track. The geese are on your right (until Christmas!).

At the top of the hill you will pass Hewish Farm Dairy. Pass through the gates into a field and continue slightly downhill. At the end of the second field turn left over a double stile. Keeping the hedge on your right continue to another stile. Cross this and continue straight ahead, with the hedge now on your left.

When you reach a tarmac road with a pair of cottages straight ahead turn left then immediately right along a gravel path.

After about 400 metres look out for a finger post (on your right) 'to Milton Abbas Church'. Turn left here and follow the hedge to the end of the woodland (on your left).

Turn right along a good path heading for more woodland. Enter the woods and follow the steps downhill to Milton Abbas. Look out for the prize-winning wild life garden on you right. The church is on your left.

Turn left in the village and head back to your car.



Anne and Eric Snape

Greenways Tree Care



and
Garden Services



(fully insured)

Felling
Reductions
Pruning
Stump Grinding
Hedges
Lawn Maintenance
Turfing
Strimming
Garden Fencing
Chippings delivered

Tim Moore

01258 837124

07968 154708

20 years experience
Free estimates and advice
Dewlish, Dorchester

Can you identify where this is in Milborne?



No prize,
just a bit of fun.
Answer in the
October
Reporter.

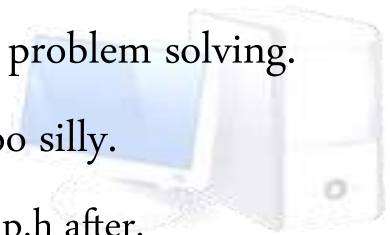
Computer Geek to the rescue!

Professional and courteous computer advice and problem solving.



No problem too small. No question too silly.

£25 for first hour (or part thereof) and £20 p.h after.



Call **Richard Gould** on 07990551477



Will Writing and Estate Planning

For *solutions* to all your estate planning needs:

- ✓ Single and Mirror Wills
- ✓ Planning for Long Term Care
- ✓ Inheritance Tax mitigation
- ✓ Lasting Powers of Attorney
- ✓ Estate Administration (Probate)
- ✓ Executor and Trustee services
- ✓ Pre-paid Funeral Plans
- ✓ Secure Storage of Documents

Call me now to arrange a
free consultation
in your home or at work
to discuss your requirements.

Michael Moorsom

Parkwood, Milton Abbas, Blandford Forum, DT11 0AZ
Telephone: 01258 440480 Mobile: 07730 986155
E: michael.moorsom@collectivelegalsolutions.co.uk

www.collectivelegalsolutions.co.uk

ABBEY SWIMMING CLUB

The Club is based at Milton Abbey School,
Milton Abbas, which has a
25 metre indoor swimming pool.

Membership is open to anyone. Members range in age from less than a year to over 80. This is a social and friendly club. Join us and keep fit.

The pool is hired for 4 sessions a week. Lifeguards supervise all sessions. RLSS National Lifeguard and Bronze Medallion courses are available as well as swimming lessons for adults and children.

Annual Membership

Adults £80. Senior Citizens £60. Juniors (17 and under) £28 as part of a family, £45 individual.

Children (3 and under as part of a family) free.

Club Sessions

Tuesdays: 7.00 pm – 9.00 pm
Fridays: 7.30 pm – 8.30 pm
Saturdays: 10.00 am – 12.00 noon
Sundays: 8.00 am – 9.00 am

Come to the pool during any club session for a free swim and pick up an Application Form or contact Robert (01258 880192) or Pat (01258 880601).

Blistering bowling display by Milton Abbas

MILTON ABBAS visited Bride Vale on a glorious hot Sunday in their latest friendly fixture. Having won the toss and elected to bat they soon discovered the pitch was a bit of a minefield. With good length deliveries either grubbing along the deck or whistling past your nose you could describe batting as tricky!

It was no surprise to find edges a plenty and Bride Vale took full advantage. With good bowling they skittled Milton out for only 74. Colin Chastey top score with 16.

Defend a total of 74. A tough ask. Crowd the batsman, make them go over the top to score and apply tight, full bowling. Sounds easy!

Jacob Holland and Ian Colmer, fresh from his career best figures of 6-13 the previous week set about the task. 12 over's later and Bride Vale were in tatters on 14-6. A mini fight back got them to 40 before losing two more wickets.

And so the last man came to the wicket with nine runs to win. A single, then a four off a poor ball and they were sniffing victory. Jacob was brought back on to bowl in a last throw of the dice for Milton Abbas. He ran in like a train, a super rising ball, a glance off the batsman's glove and the rest is history.

A superb five run win to Milton Abbas with three players in the frame for man of the match. Ian Colmer with 4-13-9. Jacob Holland with the wining wicket to finish on 4-21-11, or Nick Rowe, who took three catches on his debut including a fine one handed diving effort to remove their best batsman. A great game in the sunshine.

Colin Chastey

Squash and Badminton

Squash -If anyone would like to meet at Milton Abbey for a regular game or if a number of people would like to get together and be part of a regular Round Robin type session, please contact Simon Stewart on 839245.

Badminton - Starts again at Milborne First School on Wednesday 7th September, starting at 7.00pm. New members urgently wanted. Adults only, but juniors welcome accompanied by a parent. Contact David Payne on 837700.

PLEASE NOTE

All copy for the October *Reporter* must be received by the **14th September**.

Please send copy via e-mail as a Microsoft Word attachment and photos are best sent as a separate JPG file.

We regret that late submissions will not be included.

Round Robin Ramblers

The local villages walking group

AFTER the summer break, the 2011/2012 season of walks will start on the first Sunday in September and we look forward to exploring more of the surrounding area.

Walks are normally held on the first Sunday and the third Wednesday of each month. Please join us as we enjoy exercise, good company and the wonderful Dorset countryside.

Any questions, please contact Ian Bromilow, 01258-880044.

SUNDAY 4th September – 2.00pm

Kingston Lacy Estate and Badbury Rings

Badbury Rings car park off B3082 Blandford to Wimborne road. Grid reference: ST 960032 on OS Explorer Sheet 118 (approx. 4.5 miles)

WEDNESDAY 21st September – 11.00am

Ashmore Woods

Washers Pit entrance to Ashmore Woods located on road from Fontmell Magna to Ashmore. Grid reference: ST 897167 on OS Explorer Sheet 118 (approx. 5.5 miles)

SUNDAY 2nd October – 2.00pm

Charlton Marshall

St. Mary's Church, Charlton Marshall, on A350 from Blandford Forum. Grid reference: ST 900041 on OS Explorer Sheet 117 (approx. 4.5 miles)

Please note:

- Who** All welcome including well-behaved dogs and their responsible owners. No pre-booking required just turn up.
- Wear** Suitable clothing for conditions and location, walking boots or Wellington boots.
- Bring** Waterproofs and refreshments (packed lunch on Wednesdays).
- Pace** We go at the pace of the slowest.
- Terrain** Expect mud, inclines and stiles.
- Aim** Keep fit, enjoy the Dorset countryside and each other's company.
- Legal** We look after one another but in the end you are responsible for yourself.



SWIMFIT – Ladies! Did you know that female swimmers have been shown to experience significantly less tension, depression and anger after exercising than before? So why not come along to a SWIMFIT session and swim away that tension? SWIMFIT is not an aqua aerobics class and you need to be able to swim at least two lengths to take part. Come along and give it a try! Your first session is FREE. More info contact Maria 880895.

Have you something to share?

Send your stories and pictures to msa.reporter@yahoo.co.uk or give them to a member of the team.

www.dcmtyres.co.uk
info@dcmtyres.co.uk

dcm tyres wessex ltd BATTERIES ALIGNMENT TYRES

Open 7 Days
High Performance - 4 X 4 - Car - Van
Your Local Independent Tyre Dealer
Best Price & Service in Dorset
Next to Homebase
01258 488667

TSW
WHEELS WITH ATTITUDE...

Continental **Firestone** **GOODYEAR** **BFGoodrich** **PIRELLI**
MICHELIN **DUNLOP** **YOKOHAMA** **BRIDGESTONE** **Economy**

DCM Tyres (Wessex) Ltd, Bournemouth Rd, Blandford St.Mary, Dorset,DT11 9LW



The Hambro Arms

Milton Abbas, Dorset

Forthcoming Events

Quiz Night

Sunday 11th September 7.45pm

In aid of the Middleton Players please come and support them

Mediterranean Evening

Friday 23rd September

Mediterranean Evening

Friday 23rd September

Starters

Gazpacho soup - Traditional Spanish cold soup
Roasted red pepper bruschetta (v)
Spanish prawns with sherry and garlic
Halloumi cheese fingers

Main Courses

Spinach and ricotta cannelloni (v)
Pollo al ajillo con - Tomatoes, secos garlic chicken and
sun dried tomatoes - served with chunky fries and side salad
Sardines a la Santanderina - Sardines Santender style
served with new potatoes and side salad and warm baguette
Lamb Moussaka with new potatoes and warm baguette

Desserts

Vanilla Panna Cotto with mixed berry compote
Honey Cheesecake
Empanade De manzana - Spanish apple pie

All three courses only £19.95

By Reservation Only Tel. 01258 880233

Every Friday between
6.00 and 7.00pm

Remember fish and chips take away are available

Every Sunday lunchtime
Traditional Roast Dinner available

Eat, drink and sleep blissfully

The Hambro Arms, Milton Abbas, Blandford Forum, Dorset DT11 0BP

Tel. 01258 880233 www.hambroarms.com