



# Reporter

News and Views from around the area

Volume 3 Issue 9

October 2011

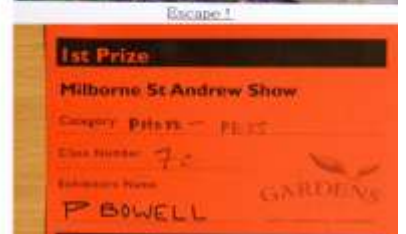
[www.milbornestandrew.org.uk/reporter](http://www.milbornestandrew.org.uk/reporter)



Milborne St. Andrew



## Our Village Show Results page 3



You are all warmly invited to the Milborne St. Andrew

## VILLAGE LUNCH

To be held at the Village Hall on  
**SATURDAY 29TH OCTOBER from 12.15pm**

Main Course : Sweet : Wine/Tea/Coffee : Mints  
£6.00 per head (children £3.00)

**BOOKING ESSENTIAL!**

Tickets available from the Drop-In Centre at the Village Hall  
from Friday 7th October (10.00am to 12 noon)

or call Meiva or Margaret as soon as possible to reserve tickets!  
01258 837453 or 837749

## Gremlins Fixed

AFTER the first month of commercial printing we have managed to iron out the few gremlins that arose. The printers (Weyprint) have looked into the problem of fuzzy pictures and swapped us to another machine which will produce a much better result. Thank you for bearing with us in this transition stage.

## Copy Date

NOW we are having it printed, please make sure all your copy is with us by the 14th of the month.

## Notice of temporary closure of Milborne St. Andrew Youth Club

DUE to circumstances beyond our control, we find ourselves in desperate need of two more volunteer helpers to be able to continue to run the club on a safe and happy basis. Therefore, as of 7th October, we are having to close the club until further notice, but hope to re-open as soon as possible. Please help us to ensure the club survives.

These new volunteers could work either on a rota basis with the other two helpers, or on all club nights if they prefer, and work in partnership with the existing club leader and committee. Aged 18+ and a keen interest in the welfare of the youth in the community are the main requirements – and a sense of humour! Could this be you or someone you know?

For more information, telephone Michelle Scott (Club Leader) 07769 901530 or Sallie Maitland-Gleed (Secretary) 01258 837442.

The views expressed in this magazine are not necessarily those of the **Reporter** team.

### Advertise with the Milborne St Andrew **Reporter**

Distributed to over 500 homes 11 times each year

Full page £175.00 p.a. / £35.00 per issue

Half page £125.00 p.a. / £20.00 per issue

Quarter page £75.00 p.a. / £10.00 per issue

Eighth page £50.00 p.a. / £6.00 per issue

Back page £240.00 per annum

Community events at the Village Hall will be advertised free of charge

Other community events at half the above rates for half page or less

Advertising copy **MUST** be received by the 14th of the month

[msa.reporter@yahoo.co.uk](mailto:msa.reporter@yahoo.co.uk)

Advertisers will also be listed in the Business Directory at  
[www.milbornestandrew.org.uk](http://www.milbornestandrew.org.uk)

## June–August Weather in Milborne St. Andrew

THE summer weather of 2011 in Milborne St. Andrew was unremarkable in all respects.

The total rainfall for June–August period was 245.5mm which was 142% of the average total for those months. After four months of below average rainfall, the above average rainfall of 93.0mm in June was very welcome. July rainfall was 95% of average at 47.5mm and August rainfall was 142% of average at 105.0mm. The wettest day of the summer was 12th June with 45.8mm.

Temperatures over the summer were disappointing with many days failing to get over 20°C. There was a brief warm spell at the end of June when the temperature reached 30°C on the 26th and another warm spell at the beginning of August when the temperature again reached 30°C on the 2nd. The summer of 2011 in Milborne was the coolest since 1988.

It was a windy summer of predominantly moist westerly winds with very few periods of settled weather but there were no damaging summer gales. The thunderstorm that ran along the Dorset coast on 18th August caused flooding in Poole and Bournemouth but Milborne got away with only 25.4mm of rain.

Sunshine levels during the summer were down by around 14% on last year.

The month of August is now regarded as a summer month but that has not always been the case. Back in the days when agriculture was far more important to this country than it is today, August was the first of the harvest months and regarded as part of autumn.

The Festival of Lammastide on 1st August was the first of the Harvest Festivals and marked the transition from summer to autumn. Although it was originally a pagan festival, it was eventually embraced by the church and loaves of bread were baked from the newly harvested wheat to be blessed in church. Tenant farmers would present a loaf of this bread to their landlords to demonstrate the quality of the wheat. I am not aware of any Lammastide traditions that have taken place in recent times and the Festival of Lammastide seems to have faded into history but Lammastide night has become immortalised in a song of Robert Burns:



“It was upon a Lammastide night,  
When corn rigs are bonie,  
Beneath the moon’s unclouded light,  
I held awa to Annie:

Corn rigs, an’ barley rigs,  
An’ corn rigs are bonie,  
I’ll ne’er forget that happy night,  
Among the rigs wi’ Annie.”

*Pluvius*

### Your **Reporter** Team

Janet Allen, Kate Chastey, Sue Gould, Heather V. Hogg,  
David Payne, Jo Perry, Ed Richards  
and Josie Wright

Advertising and General Enquiries: Jo Perry 01258 837957

News and Features: Sue Gould 01258 837575

Finance and Photography: Heather V. Hogg 01258 837392

Copy for the next issue **MUST** be received by the 14th of the month

Enquiries and copy to: [msa.reporter@yahoo.co.uk](mailto:msa.reporter@yahoo.co.uk)

E-copy as .doc or .pub files, pictures as .jpg files please  
Paper copy to Sue Gould at 28 Stileham Bank DT11 0LE

## Bell Ringing – Where next?

AFTER some years of very successful bell ringing in the village church we have unfortunately come to a halt. Over the last few years following a very successful re-activation of ringing in the village it is sad to say that although there have been some twenty people who have learnt to ring many have moved away or the younger ones on to further education away from the village and we now no longer have enough people to ring on a regular basis or to ring when asked, for wedding ceremonies.

The church is lucky in that it has a ring of six bells that were re-hung on a steel frame in 1970 and are enjoyed by many visiting bands who comment on what nice bells they are to ring.

However, the chance to ring or to learn as a complete beginner has not gone as we can still teach and encourage anybody who wishes to start, but we need willing people to come forward to join us on a Tuesday evening.

Full circle ringing is a very English activity and as such is not practised in many other countries. It relies on bells being hung in a particular fashion and then the rope pulled correctly during the bell's swing. Learning is an art acquired by the 'feel' on the rope of what is happening above you in the ringing chamber with the bell. Once the ringer learns to control their bell then it is possible to start to ring in preset or called sequences to make a more interesting sound from the six bells.

It is normal at this time of year to take a summer break and return to regular ringing in the autumn, but if there are no new ringers the bells will be silent for the foreseeable future.

If you are interested in joining, please contact me on 837329 when we can proceed with a teaching session. I intend to start on Tuesday 11th October for anyone who would like to come along to try. Come and see if you are at all curious, there will be no great pressure for a long or detailed commitment.

*Pip Bowell (Tower Captain)*

## MSA Scout Group needs your help

WE are an established group of 20 plus years, we need adults to help us evolve into a very outgoing group. At present there are four full leaders, one leader in training, and two helpers. We are looking for more adults aged 18+ to help to take each section out of the hall when needed, also to help me manage the paperwork side of the group, and fundraising. At the moment we are looking for a secretary to take minutes of meetings, plus all the paperwork from District HQ.

SCOUTS, CUBS AND BEAVERS need you. We do not get any grants from local authorities and run on the fees charged at the door. So any fundraising adds that little extra for our members. All leaders and helpers give their time free, not only on the night, but also training and events. So can you please help this group to grow and prosper? If you can help on any level please ring 01258 839076. Thank you.

*Michael Mullett Chairman*

**ROY MORBY**  
Painter, Decorator



57 Hopsfield  
Milborne St Andrew  
Blandford Forum  
Dorset DT11 0LO

Tel: 01258 837125

## Village show 2011

### List of first prize winners

1a Daisy	Helen Lord
1b Dahlia	Richard MacNair
1c Penstemon	Josie Wright
1d Rose	Linda Harris
2 Bunch of flowers	Margaret Hurley
3a Bowl of fruit	Tony Dyer
3b Mixed fruit	Linda Harris
3c Mixed vegetables	Tony Dyer
3d 3 vegetables	Janet Austen
3e Salad vegetables	Tony Dyer
4 Heaviest potato	Janet Austen
5 Longest bean	Sheila Burton
6b Flower arrangement	Linda Harris
7a Water photo	P Buckley
7b Transport photo	M Chappell
7c Pet photo	Pip Bowell
8a Cup cakes	Angie Nowell
8b Sausage rolls	Angie Nowell
8c Jar of jam	Pip Bowell
8d Jar of jelly	Linda Harris
8e Jar of marmalade	Linda Harris
8f Jar of chutney	Sally Dyer



### Children's Section

Ages 4 and 5	Jamie Sawdy
Ages 6 and 7	Esther Fooks
Ages 8 and 9	Freddie Marsden

### Trophy Winners

President's Shield for Best Vegetables	Janet Austen
Cup for Best Fruit	Tony Dyer
Rose Bowl for Best Flower Arrangement	Linda Harris
Rose Bowl for Best Bunch of Flowers	Margaret Hurley
Haylock Cup for Best Bloom in Show	Linda Harris
D T Brown Cup for Best Photo	Pip Bowell

## Milborne St. Andrew Gardening Club



IN August our Garden Trek had to be cancelled due to the heavy downpours, but we were still able to meet up in the evening to enjoy a shared supper together. We were not that unhappy as at the time our gardens needed the rain, though it was disappointing for those who had been busy weeding, mowing the lawns, etc. for a few days beforehand!

The committee was then busy planning the Village Show on the 10th September, and would like to thank everyone who helped with the organisation and who brought along their entries. The list of first prize winners is published above, and we hope that everyone enjoyed themselves.

Our next talk is by Michael Michaud on Thursday 27th October, entitled Immigrant Vegetables. Quite an unusual title, but I understand it should be really interesting.

Please note in your diaries that there is an extra meeting on Thursday 17th November, starting at 7.30pm, which will be a social evening with curling and supper. There will be more details about this in November's Reporter.

*Linda Harris Secretary*

## Lots and lots of little Ladybirds

IT IS wonderful to be back – seeing last year's little ones now blossoming and growing into being the older members of the group; and welcoming new children some who are just old enough to join and others who were previously at Rainbows. We also welcome Lucy to the staff team. Many of you will already know Lucy from her other employment as a nanny to a Milborne family.

Thank you to everyone who gave us Tesco vouchers last year we have now received our goodies. Along with games and collage and art materials we now have a large den frame (see photo). We hope someone can help with a cover to go over it – perhaps a camouflage net or material sewn together to fit – any suggestions welcome.



Ladybirds have started this year with more children than ever. Last term we took the decision to change our registration with Ofsted increasing our capacity from 20 to 24 children a session. This was hoped to only be a buffer in the last term of the school year due to the 'baby boom' of 2009 becoming old enough to join us. Working with this number of young children in a community hall is difficult, challenging and hard work. We have between 18 and 20 children already each morning!

Ladybirds Committee and staff work hard to make preschool an enjoyable experience and give a great deal of voluntary time to do so. It is sad that Rainbows in Milton Abbas closed during the summer and may well be a reflection of the financial time we live in – preschools have to comply with restricted funding, regulations regarding qualifications, EYFS welfare and assessments, safeguarding issues to name but a few. Ladybirds will be celebrating the 10th anniversary in 2012 – we are proud that the preschool has continued to grow and flourish during this time and hope to do so for many more years.

*Liz Dyer*



## Milborne Ladybirds Playgroup

registered charity no. 1087441

We are a friendly community preschool with highly qualified staff who enthusiastically help children to achieve their potential through fun activities.

"Children are happy and comfortable with staff and choose from a range of activities each day."

*Ofsted report 2009*

Opening times:

Early birds 8:30 to 9:00, Session 9:00 to 12:00, Lunch club 12:00 to 1:00

Contact Details: Liz Dyer 01258 839117  
[www.milborneladybirds.org.uk](http://www.milborneladybirds.org.uk)

# Parish Council Report

## 14th September

THE well attended meeting was opened with a minute's silence for District Cllr Michael Cox whose memorial service had been attended by the Clerk and Councillor Hopper. The first six points were dealt with efficiently as we had no reports from district, county or parish representatives.

So to the application for a full licence at the village hall when, after questions, it was decided that no objection is to be made at this time. It seems that although the Parish Council has the land at the War Memorial and the Parish Pit, no record is kept at the Land registry and it was decided that the recording of the land should happen as soon as possible. It has been decided that another Grit Bin be purchased to add to the four already purchased and Vice Chairman Morgan will follow up and ensure they are on site before the weather changes.

Councillor Hopper reported on the successful allotment meeting and concluded that enough interest was shown to take the project forward. Discussion for ideas for the Queens Diamond Jubilee culminated in the PC deciding to ask the parish what they would like to do. Councillor Hopper also suggested that a working party be formed to reassess the lease at the Sports Club more information will follow. The meeting was then closed.

A question from the floor was raised but then retracted as the meeting had closed. The Parish Council have rightly decided to close the meeting at the end of formal proceedings. This does not mean that members of the public can't ask questions about the agenda as there is the opportunity to do so at the beginning of the meeting and the Parish councillors can be contacted at times other than the PC Meetings. In my opinion it makes for a much more business like meeting and a better forum for the council to get on with matters pertaining to the good of the village.

Jo Perry

# Stunning Scenery in Patagonia

## – WI September

THIS month's speaker, Shirley Critchley, titled her talk '*Mutiny, Mayhem and Murder*', and those of us who had made it to the first meeting of the WI after the summer break seemed more than ready to sit back and listen to a tale of daring exploits – as long as they were by someone else! Shirley did not disappoint: she regularly takes part in expeditions organised by Colonel John Blashford-Snell, the well-known explorer and author, who founded the Scientific Exploration Society. On this occasion her party was headed for Patagonia and the remains of HMS *Wager*, which had been wrecked on the south coast of Chile in 1741. The background to the wreck of this ship and the subsequent fate of the survivors proved to be a chilling tale. Shirley's own team diverted to explore the Patagonia ice fields to the north and south – a journey through bogs, icy water, shingle and enormous glaciers, but with stunning scenery to compensate.

Back on more familiar ground, skittles is ongoing, so please give your name to Jenny Preston if you are interested in joining in. Pub lunches will continue during the winter months, dates to be confirmed.



WI Members enjoying a talk by Lord Digby on their summer outing to Minterne House.

Next month's speaker, Jenny Peet, will reveal secrets of the Tudors under the intriguing title '*No Knickers*'. Keeping to the theme of the evening, on Thursday 13th October, the competition is '*A Pair of Knickers*'. Please come along and join us if you would like to find out more!

Pat Bull

## Dog poo delays Wednesday Club!

THE weather was foul when we set off on our visit to the R.N.L.I and what was that awful smell on the coach?

There was a trail of dog mess along the aisle of the coach. The offending poo was on the grass verge adjacent to Stileham Bank near the kerb side where the coach pulled up. One of our members inadvertently stepped on it and brought it into the coach.

It took the driver and one of our members a good fifteen minutes to get all the offending mess cleaned up from the aisle and the steps of the bus.

The delay meant that members of the club from Bere Regis were kept waiting in the pouring rain!

Would the inconsiderate dog owner please refrain from allowing their dog to foul not only on this grassy area (the schoolchildren collect the coach every morning from this point) but anywhere else in the village for that matter!

**Please be a responsible dog owner and clear up after your animal your antisocial behaviour affects others!**

N. Kirk

**GERRY'S PLANTS**  
Shrubs, Perennials, Climbers,  
Summer and Winter  
Bedding and Baskets  
Soft Fruit and Vegetable Plants  
Come and see them at  
12 The Rings  
Milborne St Andrew  
Tel: 01258 837386

## Outing to the R.N.L.I. College, with lunch and later a visit to Haskins Garden Centre

TUESDAY 6th September turned out to be a wet and windy day but this in no way spoilt our outing although it did make us think of what it would be like to be involved in a rescue at sea on such a day. The coach took us right to the door of the R.N.L.I. Training College in Poole. Once there we were warmly welcomed and enjoyed a delicious two course carvery in the modern dining room.

After lunch we split into three groups and were taken on a tour of the impressive training facilities. We saw the large training pool where there are facilities to recreate extreme weather conditions within a safe environment. Here we watched two dvd's which gave a taste of the process that lifeboat crew members have to go through and visited the inside of a simulator of a lifeboat cockpit. We were also shown the luxurious Riggers Restaurant and Bar which have spectacular views over Holes Bay.

Following a visit to the shop for some retail therapy and a photo call we boarded the coach and made our way to Haskins Garden Centre where we had an hour to browse and have tea and a cake, if we could manage it, before returning home.



This was yet another most enjoyable event for our 35th year celebrations.

Our next meeting will be the first one back in the Village Hall after our Summer outings, on Wednesday 5th October at the new time of 2.00pm. We have Dorset Rescue Dogs with Matt and his search dog Charlie who will show us how the dogs are trained for search and rescue in disaster areas all over the world.

You are all warmly invited to join us, we will be pleased to see you.

Lis Watts

Have you something to share?

Send your stories and pictures to  
msa.reporter@yahoo.co.uk or give them to a member  
of the team by the 14th of the month.

## Individual Yoga Classes

Yoga helps us to live better and more happily at every level of our being, physically, mentally, emotionally.

And when taught in the traditional way, individually, it is much more powerful.

*I have been teaching yoga for over forty years. I am a qualified yoga teacher, teacher trainer and yoga therapist.*

To find out more, ring or email me

Sarah Ryan, KHYF teacher and trainer,

BWY dip., CNHC reg.

Tel: 01258 839230

Email: saryan6630@aol.com

## CHARITY GOLF DAY

Thursday 6th October 2011

Bulbury Woods Golf Club

Lytchett Minster, Dorset

18 Hole Team Stableford Competition for 4 players

Prizes for

Nearest the Pin Longest Drive

Cost £120 per team

(£30 x 4 players, to include coffee and bacon roll plus lunch)

proceeds to



Dorset wide support for bereaved children

[www.mosaicfamilysupport.org.uk](http://www.mosaicfamilysupport.org.uk)

If you or your company would like to take part,  
sponsor a hole or donate a prize  
please contact us on

01258 837071 or

Email: [katie@mosaicfamilysupport.org](mailto:katie@mosaicfamilysupport.org)

Registered Charity 111828



Thursdays 9.30 – 11.30

Sports Pavilion, Milborne St Andrew  
£1.50 per session, drinks and snacks provided

If you have a baby, toddler or  
pre-school child, come and enjoy warm  
friendly company whilst your little one plays  
with toys and interacts with other children.

Website: [www.busy-bees.org.uk](http://www.busy-bees.org.uk)  
Contact: Hayley Davis 07919 156578  
or Jody Moore 07855 168117



# Milborne St. Andrew First School



Learning together, playing together;  
all for one, one for all

## School News

The Autumn term has begun very well with the children looking extremely smart and settling in to their new year with enthusiasm. On Saturday 10th September all the children entered the village Gardening Club Show with their art work and they are proudly displaying their winning entries in the school. Members of the Gardening Club presented the cups during our Assembly and we thank them for involving us.

We have many activities planned for this term including trips to the Nothe Fort and Weymouth Lifeboat Station and our Community Art Project. We would like to invite all in the village to our Harvest Festival at the Church on Friday 14th October at 9.30am then back to the school for refreshments afterwards.

This term we are offering children the opportunity to learn new skills including ukulele lessons, cricket, football, cooking, gardening, basketball and circuit training. Several of these activities are run by parents or members of the community and we are very grateful for their time. If you want to help in school please drop us a line.

If you have not had the opportunity to look around our village school please join us for Harvest and refreshments or ring/e-mail the school to arrange a time to come and meet the children and find out what we are doing.

*Photographs show the children's artwork and, above, Mrs Dyer, Chairman of the Gardening Club who came to school to present cups and certificates to the children who had won prizes.*



### CONTACTS

If you require any information about the school, including admissions details for children please contact the school office.

**Acting Head:** Mrs Audrey Andrews **Secretary, School Office:** Mrs Helen Pugh

**Chair of Governors:** Mr George Legg **FOS Chairman:** Mrs Angelica Cotterell

e-mail: [office@milborne.dorset.sch.uk](mailto:office@milborne.dorset.sch.uk) website: [www.milborne.dorset.sch.uk](http://www.milborne.dorset.sch.uk) Tel: (01258) 837362 Fax: (01258) 837170

BERE REGIS MOT & SERVICE CENTRE

TEL: 01929 472205

**MOTs**  
(No Re-Test Fee within 10 working days)



**BRAKES \* EXHAUSTS**

**COMPUTERISED DIAGNOSTICS**  
LATEST EQUIPMENT FOR  
MOST MAKES AND MODELS

**OVER 30 YEARS' EXPERIENCE**  
IN THE MOTOR TRADE

Proprietor: Bill Greer  
Unit 1 Townsend Business Park  
Bere Regis, BH20 7LA  
(At rear of Shell Service Station)

# ***P.N. GRAY***

***ELECTRICAL CONTRACTORS***

**AGRICULTURAL - DOMESTIC - INDUSTRIAL**  
**ESTABLISHED OVER 50 YEARS**

ALL ELECTRICAL WORK UNDERTAKEN FROM  
INSTALLATIONS TO MINOR WORKS  
INSPECTION AND TESTING - REWIRING AND  
MAINTENANCE

FULLY ENROLLED WITH THE BRITISH STANDARDS  
INSTITUTE FOR SELF CERTIFICATION AND  
BUILDING REGULATION PART "P"

GIVE US A CALL FOR A FREE NO OBLIGATION  
QUOTATION OR JUST SOME FRIENDLY ADVICE

TELEPHONE: 01258-837354/01258-837270  
MOBILE : 07774-838851



E-MAIL : [sharongray@talktalk.net](mailto:sharongray@talktalk.net)

Blandford · Dorchester · Shaftesbury · Sherborne · Weymouth · Wimborne



**Dorsetlettings**  
.co.uk

**Dorset's leading letting agent**

- ▶ specialists in residential lettings since 1984
- ▶ reputation built on reliability and efficiency
- ▶ experienced, ARLA trained and qualified staff
- ▶ professional advice, friendly service



24 Market Place, Blandford, DT11 7EB

[blandford@dorsetlettings.co.uk](mailto:blandford@dorsetlettings.co.uk) 01258 452444

[www.treeguy.co.uk](http://www.treeguy.co.uk)



**Chris Baxter Arborists**

*Caring for Dorset trees*

Pruning & felling carried out to BS3998 standard,  
tree planting and aftercare, hedgework and stump  
grinding, emergency tree work & mobile  
sawmill, tree surveys, arboricultural consultants  
BS5837 standard.

ND Arb. NCH Arb. NPTCs  
First Aider at Work, Aerial Rescue, Fully Insured

01258 453 299 or 01202 779 264  
Office 8.30-12.30 pm Mon-Fri  
[treeguy@btinternet.co.uk](mailto:treeguy@btinternet.co.uk)





## LETTERS TO THE REPORTER

Dear Editor,

### **New Term Trauma!**

We are all dressed in our new School uniforms ready for our first day at Puddletown Middle School. The others waiting for the bus are looking forward to starting in the next year up. However, we are all late as the Damory Coach failed to turn up and our parents had to arrange lifts for us. I heard that a bus eventually came around 9.00am to pick up a few stragglers.

Peter Riddle

**Editors Note:** Damory Coach Company were invited to reply, but have not responded as yet.

Dear Editor,

Mr Lock's letter to the *Reporter*, September edition would appear to have been prompted from the disrupted Parish Council meeting in June. However, the July and August meetings ran smoothly in the absence of hecklers.

A 'manifesto' in the *Reporter* is not appropriate or necessary. Councillors make a written application which contains details of their background and experience when applying to be co-opted to the Council. If there had been more than enough applicants for the Council in May forcing an Election, a manifesto may have been necessary in order that the village could decide for whom to vote.

I was asked to apply for the Parish Council and I was elected to take the Chair.

Please draw a line under this as the Councillors have more pressing things to deal with on behalf of Milborne St. Andrew.

Parish Councillors are available to deal with your enquiries at any time and our contact details are on the Parish noticeboard and the website. You are also welcome to contact our Parish Clerk, Cllr. Janet Allen, Chairman, Milborne St. Andrew Parish Council

Dear MSA Residents,

As a fellow resident of Milborne St. Andrew, it saddens me to have to write a letter on this issue but I am disgusted at the amount of irresponsible dog owners there still seems to be living in this village.

I know the subject has been touched upon in Parish Council meetings and letters have been written to the *Reporter* by other residents but why, oh why does it continue? Not only does your dog poo look and smell disgusting, it is also dangerous. Toxocaracanis is a roundworm found in dogs. Roundworm eggs are found in dog mess, which can easily be picked up by young children. This causes stomach upsets, sore throats, asthma and in rare cases blindness. The eggs can remain active in the soil for many years, long after the dog mess has weathered away.

I am fed up of having to 'watch where I walk' on some routes, instead of enjoying my walk. It's revolting, sickening and it's nauseating when accidentally trodden in. Dog poo needs to be picked up when your dog has done its jobs. I know it's not a nice job to do, but try holding your breath and count to 10 whilst picking it up in a carrier bag. There are ample doggy bins dotted about. You probably just passed one!

I have taken it upon myself to contact the NDDC, asking how I go about reporting re-offending dog owners who fail to pick up their dog waste for I am prepared to give this information in the hope our village cleans its act up.

So, please, dog owners clear up your

dogs mess. There are no excuses! Be mindful that other adults and children use our village and shouldn't have to dodge your dog's poo.

Name and address supplied.

### **Milborne Business Centre**

We have had an ongoing problem and concern about youngsters breaking into our waste water treatment compound, which is situated across the main road from our Business Centre.

**The concern is the lagoon and ponds, which presents a danger to children.** The site is fenced and warning signs are in position but there are continuous break ins through the fence, which is criminal damage. We have had on-going discussions over this matter with the local police (Safer Neighbourhood Team) and have had a recent site visit from them.

They agreed that the village should be warned, and particularly parents with children. We believe that the older children are daring younger ones to enter these dangerous ponds/lagoons.

We have been happy in the past for youngsters to use the redundant car park for cycling, skateboarding, etc. although at times there has been considerable debris and broken glass left. This has improved in recent months.

However, we will not tolerate criminal damage leading to risk of life and limb and we will take no responsibility for any occurrence resulting from trespass.

R S Ferguson

Director, Camelco Ltd

Milborne Business Centre, Blandford Hill.

### **Historic Church Ride**

I would like to thank the many people who sponsored me in my recent cycle ride in aid of the Historic Churches Trust. Thanks to Ian Watts I started my ride in Dorchester and made my way back to Milborne via West Stafford, Tincleton, Puddletown and Bere Regis, visiting 17 churches on route. I hope to collect about £250, half of which will go to our village church.

David Payne



- Tax Returns
- Accountancy
- Book Keeping
- Debt Collection
- Payroll Services
- Debt Management
- Company Formation

## Hamilton Business Solutions

*The perfect solution*

Unit 1a Luccombe Business Centre  
Milton Abbas  
Dorset DT11 0BD

[www.hbsol.co.uk](http://www.hbsol.co.uk)

Tel: 01258 881 331

*With Compliments*

**Need a solicitor to help  
you move house?  
We can help.**

*"I'm glad that I decided to use  
Blanchards Bailey again  
for my conveyancing"*

Call now for  
**"the utmost professionalism"  
in your sale and purchase**

*In the Blandford area, call:*

**Mark Bellman 01258 459361**

*In the Dorchester area, call:*

**Michelle Wilson 01305 217301**

Regular **free advice** sessions at our Shaftesbury office  
also available. Call **01747 440447** for details.

**Blanchards Bailey** LLP

*Professional and Personal Service* Solicitors

**www.blanchardsbailey.co.uk**  
Blandford, Stalbridge, Shaftesbury and Dorchester

Please quote MS1107

**Kemp & Co.**

[www.kempandcoproperty.com](http://www.kempandcoproperty.com)

Contact your local office now for  
a **FREE** Rental Appraisal and  
Expert Advice from  
ARLA Qualified Specialists

Tailored Services to suit your needs  
Fixed Tenant Find Fees  
Free Rent Guarantee Insurance  
Extensive Marketing

*Protecting You,  
Protecting Your Investment*

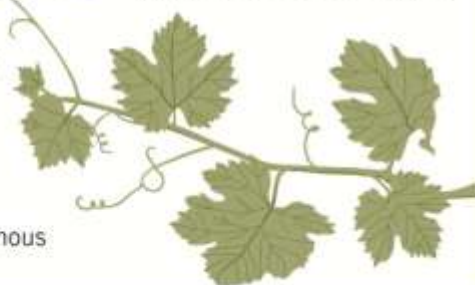
**9 Challacombe Square, Poundbury  
Dorchester, Dorset, DT1 3SX  
01305 251800**

# Heathcote House

GUEST  
ACCOMMODATION  
Tel: **01258 837219**

Heathcote House is a lovely Grade II listed guest house right in the heart of Milborne St Andrew. We offer a warm welcome and friendly service, all rooms have king size beds, en-suite bathrooms and are tastefully refurbished to a very high standard.

- Aga cooked breakfast served in the conservatory under an old grape vine.
- Guests drawing room with big comfy sofas and log fires in the winter.
- A secluded garden with delightful seating areas.
- The perfect place from which to explore Dorset's unspoilt countryside and famous Jurassic coast a few miles away.



Heathcote House, Milborne St Andrew, Dorset DT11 0JG. Website: [www.heathcotehouse.co.uk](http://www.heathcotehouse.co.uk)

**B.S.T.**

**Building Services**

Carpentry - 1st and 2nd fix  
Brick and blockwork  
Kitchens and bathrooms

Milborne St. Andrew

24 HR Callout

Fully insured

07808 360513

01258 837486

Building maintenance  
Windows and doors  
Tiling and flooring

[www.bstbuildingservices.co.uk](http://www.bstbuildingservices.co.uk)



**FIRST CLASS CARPENTRY AND BUILDING WORK**

# Sweet Deceit – Part One

By Janice Parsons

22nd November

As I drove slowly back to Milborne through the howling wind and rain I knew that the two gulps of scotch I had taken from my hip flask would have put me over the limit, so I carefully drove to the speed limit. Even though the most zealous of Dorset's finest wouldn't be out trying to catch speeders on a night like this, I couldn't risk the consequences of drawing attention to myself.

As I drove into the village down Blandford Hill the last of the "wrist slittingly" depressing love songs played out on the Tuesday night love songs programme. I suppose they wouldn't seem so depressing to someone who didn't keep committing emotional suicide, but that's how they sounded to me.

No sign of life in the Village. The good citizens of Milborne St. Andrew were sleeping, or whatever was happening was going on in the privacy of their own homes. Just the lights from The Royal Oak gave a glimpse of life.

As midnight clicked over on the car clock, I turned right into Milton Road as that awful annoying jingle came on before the news, advertising some car sales place in Boscombe. There had been a few times in the past that I could have punched the radio when that came on. Tonight was nearly one of those times, but for the fact that I needed to hear the News. I turned the radio up as the news came on. Nothing . . . nothing giving any details of the situation that would turn my life upside down. Thank God!

Left into Coles Lane and up nearly to the top, finally I was beginning to feel a bit safer as I drove behind Barnes Croft where I have my office. The car was now out of sight. I ran to the office door. I had no coat. That had to go along with the other outer clothes I wore that night. By the time I got to the office door the tracksuit by "George" I had bought from ASDA earlier that evening was sticking to my skin as if I had been stood in the shower.

In the office, more scotch or get out of these clothes first. More scotch. I opened the drawer where I kept the bottle of Teachers. Then I remembered the bottle of Talisker in the other drawer that would be much more suitable for this sort of moment. I poured four fingers of Talisker into my glass, and took a gulp. No water in my Malt whiskey. My old Dad would be turning in his grave. Feeling like Dad was looking over my shoulder with that fierce frown on his face I headed to the sink to drip a tiny bit of water into my glass.

I walked back to my desk and slumped into my tired old leather desk chair that I had rescued from a skip outside when the last company moved out. No wonder they went to the wall buying and worst of all throwing furniture like that away. Another gulp of Talisker and I was starting to warm up from the inside out and again starting to feel a bit safer. How stupid John MacDonald, how stupid can you be, John MacDonald Private Eye, you have really done it this time. How long will it be until they find out? How long before they are at my door? Until that time nobody knows. I could be a time millionaire, but the pounds will be slipping away like the sands of time through an egg timer . . . tick, tick, tick.

Bang bang, the door flew open. Hell! I thought I had locked that. My heart flew from my chest to my throat. How? They can't know where I am, or even who I am.

"Beth, it's you! I thought they had caught up with me already!"

"So when were you going to tell me John? Is it done?"

Beth Gordon was never a woman to stand on ceremony. She stood tall in the doorway, and even in jeans and a baggy jumper seemed to look glamorous, but her gruff Northern Irish accent gave her a whole different image. She wasn't always

gruff. Sometimes she could make that accent seem as soft as if she were from the far south west of Eire, and use words freshly sucked from the blarney stone.

I paused as I thought what I was going to tell her. Then with a deep breath I said, "It's more than done Beth. You can't be near me now."

Beth walked over and perched on the corner of my desk.

"At least give me a glass of that to celebrate." She said, nodding towards my bottle of Malt.

"Celebrate, Beth? I think we will be celebrating the end of my life as I know it."

She leant across and kissed me on the cheek, then leant towards my ear and whispered,

"I'm a woman of my word, John. Trust me."

For just that moment I really believed that it would be OK, such was the power of that woman's words.

*To be continued next month.*

Send your stories and pictures to  
[msa.reporter@yahoo.co.uk](mailto:msa.reporter@yahoo.co.uk)

## Winterborne Whitechurch Cubs and local community pick up 57 kilos of litter!

Winterborne Whitechurch's Cubs rose to the challenge set by Parish Councillor Paul Ritchie and together with a number of local residents filled 17 sacks of litter from around the village. The idea came from a recent Parish Council meeting when complaints were made about the amount of litter that was evident in the Village. This led to a community partnership between a number of attendees of the meeting, other local residents and the Cub pack who decided to do something about it.

Supported by the Parish Council, and newly appointed District Councillors Jane Somper and Emma Parker, who also lives in Winterborne Whitechurch, the equipment to undertake the litter pick such as gloves, litter pickers and high visibility jackets were borrowed from the District Council.

Afterwards Paul Ritchie said: "The Village is free from litter now and all down to our Cubs and local residents. In fact we decided to weigh the rubbish to illustrate how much litter there is, and it came to a staggering 57 kilos. We also made sure we recycled anything suitable such as plastic and cans and plan to make litter picking a regular activity to keep the village looking at its best".



*The Cubs and residents in front of the Village Hall with the litter that was collected.*



# Dorset Carpet Care

cleaning with care

Dorset Carpet Care is a local, family run business specialising in the cleaning and restoration of carpets, rugs soft furnishings and stone or tiled floors, in homes and businesses throughout Dorset.

We use various technologies including the latest truck-mounted hot water extraction system that can clean deeper and more effectively than other methods.

We belong to the NCCA and IICRC, which means we are fully qualified, honestly priced and our services come guaranteed.



- ✓ hot water extraction deep cleans
- ✓ removal of stains and smells
- ✓ stain protector application
- ✓ treatments for allergies and pests



Call Andrew or Joanne  
on 01258 837092

[www.dorsetcarpetcare.co.uk](http://www.dorsetcarpetcare.co.uk)



## Beauty and Massage Therapy

For all of your beauty and massage therapy requirements contact Jo at

# Spoilt Rotten

Treatments for both ladies and gentlemen include Swedish Massage, Waxing, Manicures, Pedicures, Makeup, Facials, Airbrush Tanning and many more procedures.

Fully insured and qualified treatments

**Telephone 01258 837014**

Stag House, The Square,  
Milborne St Andrew, DT11 0JF

# WOODS

(DORCHESTER) LTD

# Funeral Directors

Established in Dorchester since 1878

## Monumental Masons

AVAILABLE 24 HRS A DAY

Paul R. Gawler M.B.I.E. Dip.F.D. M.B.I.F.D.

Pauline J Guy Dip.F.D. M.B.I.F.D.



**DORCHESTER 01305 250425**



# Ask Millie

– your problems solved



## Last month's problem

In reply to the problem of dwindling numbers in societies in our village.

**Millie says** – I have not received a single response to this letter, which tells me what an apathetic bunch we are. Surely if none of the societies in the village are to your taste – start up another which does appeal, or do you just want to collapse in front of the television, alone, every evening?

## Dear Millie

*I don't like the way some people put their rubbish out too early for the rubbish lorry. What can we do about it?*

**Millie says** – This letter was not only curt but also anonymous. If, sir or madam, you would like any suggestions for a solution to this problem, now or in the future, I suggest you are a little more courteous and have the courage to write your name!!

## Dear Millie

*I regularly put out seeds, nuts and fat for the birds in my garden, but instead of*

*the sparrows and finches, my offerings are gobbled up by crows. How can I prevent this happening?*

**Millie says** – You shouldn't be prejudiced about which birds you feed and which you don't. If crows are feeding from your bird table, they must be hungry. Remember all species of birds, insects, fish and mammals depend on each other – we are also part of that chain.

## Dear Millie,

*I am newly single and moved into Milborne St. Andrew to make a fresh start. I have joined several clubs and societies and have invited many of my neighbours and new acquaintances round to my house for a meal. My problem is that not one has ever asked me back to their house for a meal, or to have coffee or anything. I am aware that this makes me sound like 'Billy No Mates' but my friends and neighbours in my last place were so different. Have you any suggestions?*

**Millie says** – This is a common complaint from single people. Married couples have a tendency to only invite other couples to their home. They seem to think they are re-stocking Noah's Ark rather than having a few friends round for a meal. In days of old there were strict 'rules' about repaying hospitality and no-

one would have dreamt of accepting an invitation without planning some sort of return. Single people can be equally thoughtless and give the excuse that it is too much work when they are on their own. Perhaps it would help if everyone remembered that 'there is no such thing as a free lunch'. I suggest that you arrange to meet your new neighbours/friends for a meal in the pub and hope that they will pick up the tab as their way of re-paying your hospitality. Friendships have to be carefully cultivated and nurtured, and no-one is suggesting that you can't ever be generous and offer hospitality with no thought of any return, but I have noticed that one-way relationships rarely prosper.

## Next month's problem

### Dear Millie

*My husband is always out of the house. If it's not the pub it's swimming or badminton or playing cards at his mates. Why doesn't he want to take me out or stay at home? It was so different when we were first married.*

Well, readers, what do you think? Send your comments to [msa.reporter@yahoo.co.uk](mailto:msa.reporter@yahoo.co.uk)

**Send your Questions and Answers to Millie by e-mail to the Reporter at [msa.reporter@yahoo.co.uk](mailto:msa.reporter@yahoo.co.uk)**

## It's that time of year – May Fayre

IT'S that time of year, calling all members of the village. The date has been set, 28th May 2012 at our village hall for the bi-annual MAY FAYRE.

I am looking for groups who are interested in joining me and the Scout Group for a FUN DAY. If you are interested in helping me put this together please ring me on 01258 839076 as soon as possible so we can start putting the fun back into Milborne!

*Mike Mullett Co-ordinator.*



**Did you identify this?**

## Dig for Milborne

A MEETING was held at the Sports Club Pavilion on Tuesday 13th September to see if there was any interest in the village in developing the vacant land near the Sports field into allotments. 16 people attended and expressed an interest in having allotments on this under-developed site. Those who attended were shown the proposed site which at approximately three acres could accommodate about 30 individual allotments.

The enthusiasm shown by those attending has encouraged a steering group to be formed to push the project forward. The Parish Council was pleased to see that the scheme has the backing of some of the community and looks forward to supporting the progression of the "Dig for Milborne" allotments.

## Age Concern Dorchester ... would like your Advice!

**Age Concern Dorchester** has need of volunteers to join its **Information and Advice** team to provide information and advice to older people and their carers.

Information and Advice volunteers interview clients, identify and research information, act on clients' behalf, and help with letter writing; undertaking diagnosis, providing information with options and identifying action.

If you:

- Like to identify problems and solutions in meeting the needs of older people
- Have some spare time to give
- Enjoy volunteering

Please contact Peter Lindsley on 01305 269444, [peter@acdorchester.org](mailto:peter@acdorchester.org)  
Rowan Cottage, 4 Prince of Wales Road, Dorchester DT1 1PW.  
[www.acdorchester.org](http://www.acdorchester.org)



## OLD BARN DENTAL PRACTICE LTD

Mr John Woodward BDS. (Hons.) U. Lond. LDS RCS

**Modern, cosmetic and restorative dentistry in a friendly atmosphere**

Manor Farm Road,  
Bere Regis  
Wareham  
Dorset BH20 7HD

Telephone: 01929 471023  
email: oldbarn@tesco.net

## Rainbow Pre-School

12 The Business Centre



It is with huge regret that we have to announce the closure of Rainbow Pre-School, Milton Abbas. The Committee would like to say a massive thank you to all the staff who all looked after the children so wonderfully and worked so tirelessly to try and keep Rainbow open. We would also like to thank all the parents who have been so supportive and wish all the children lots of luck.

### SALE!

We will be holding a residual sale of toys, games, office equipment and furniture on **Saturday 8th October 10am - 12pm and 2pm - 4pm** Everyone is welcome and all items are cash sales.

**Rainbow Pre-School—01258 880795**

Reg. Charity no. 1027657

Ofsted no. EY363567



**Providing first class care for all your pets**



**Appointments available all day including our new early bird appointments from 8.00am**

South Walks Dorchester DT1 1DU  
Tel: 01305 262913

info@southfieldvet.co.uk www.southfieldvet.co.uk



**24 hour Emergency Service**



## Macarons

- 1 large egg white
- 2 oz ground almonds
- 3 ozs caster sugar
- Few drops almond essence and vanilla essence
- Split almonds

Line baking tray with non-stick parchment.  
Whisk egg white until stiff, add ground almonds, caster sugar and essences. Beat well.  
Using ½ inch nozzle pipe onto baking trays or place small spoonfuls of mixture onto trays.  
Place split almonds on top of each and bake 180°C for 20–25 minutes.



## Rose and Ed's Christmas Puddings

*We are now taking orders for this year's puddings — available in December*

**£8.00 each**

*All profit will be donated to Milborne Scouts  
Return last year's basin ASAP for a £1.00 discount  
Tel: 01258 837921*



A traditional village pub where families are made welcome  
in



## Milborne St. Andrew

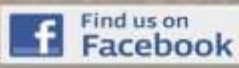
- Lovely garden with a children's play area
- Full menu available 7 days a week
- Exciting and extensive children's menu
- Excellent Sunday Roast 12.00-3.00pm
- Separate Sports Bar
  - Sky Sports and ESPN
  - Pool and Darts
- Function Room and Skittle Alley

**WHAT'S ON IN OCTOBER**

**Tuesday 4th – Bingo at 8.00pm**

**Friday 7th – Live Music with Shooter from 9.00pm**

**Saturday 29th Kids Halloween Party 2.00pm til 4.00pm then Live Music with The Crack from 9.00pm**



Bat friendly

**takeaway menu available**

tel: 01258 837 248

DORCHESTER HILL  
MILBORNE ST. ANDREW  
DORSET DT11 0JG

# Community Contacts

More information about many community organisations can be found on [www.milbornestandrew.org.uk](http://www.milbornestandrew.org.uk)

## Councils

Environment Agency Floodline		0845 9881188
North Dorset District Councillor	Emma Parker	01258 881631
	Jane Somper	01258 471089
Parish Council – Dewlish	Clerk: Pat Gubbins	01258 881348
	Chair: Mike Claydon	01258 837314
Parish Council –	Clerk: Joyce Holman	01202 880512
Milborne St. Andrew	Chair: Janet Allen	01258 837551

## General – Adult

Computer Drop-in Centre	Rose and Ed Frost	01258 837921
Ladies Group – Dewlish	Judith Bridgen	01258 837157
Memory Lane Swing Band	Gilly Pink	01258 837695
M.A. Neighbourcar	Nigel Hodder	01258 881709
Wednesday Social Club	Margaret Evans	01258 450518
Women's Institute	Linda Wright	01258 839255

## General – Youth

Beavers	Mike Mullett	01258 839076
Cub Scouts	Mike Mullett	01258 839076
Hazelnuts out-of-school club	Hazel Barrett	01305 848588
Ladybirds (Playgroup)	Liz Dyer	01258 839117
Scouts	Mike Mullett	01258 839076
Under 5's Group – The Busy Bees	Hayley Davis	07919 156578
Youth Club age 8 – 14 yrs	Sallie Maitland-Gleed	01258 837442

## Police

Police – Non-emergency contact		01202 222222
Community Beat Officer	PC Dave Mullins	01202 223003
		07825 521850
Community Beat Officer (Dorch)	PC Charlie Dale	01305 222222
Community Service Vehicle	CSO Angie Partridge	01202 226000
Safer Neighbourhood Team		
Blandford Rural South	PC Dave Mullins and PCSO Luke Goddard	01202 223003 or 07825 521850

Or email [blandfordruralsouthSNT@dorset.pnn.police.uk](mailto:blandfordruralsouthSNT@dorset.pnn.police.uk)

## School

Milborne 1st School		
Acting Head:	Audrey Andrews	01258 837362
Chair Governors:	George Legg	
Friends of School Chair:	Angelica Cotterell	

## Special Interest

Bellringers	Pip Bowell	01258 837329
Food and Wine Society	Maureen Lock	01258 837929
Healthy Eaters	Heather Gipps	01258 837058
MSA Friendly Art Group	Elaine Anthony	01258 837089
MSA Gardening Club	Sally Dyer	01258 837061
Milborne Players	Roy Sach	01258 837033
Ranters' Folk Session	Roger Harrall	01258 837371
Round Robin Ramblers	Ian Bromilow	01258 880044

## Sport

Abbey Swimming Club	Pat Cowan	01258 880601
Adult Tap Dancing Milton Abbas	Libby Goodchild	01305 268029
Archers – Crossways	Sheila Ryall	01258 837504

Athletics – Junior	David Pearson	01258 837057
Badminton	David Payne	01258 837700
British Horse Society (Dorset)	Carol Shoopman	01258 880318
Circuit Training and Pilates	Claire Barratt	01929 554999
		07946 732769
Cricket – Dewlish	Elaine Kellaway	01258 837696
Cricket Club – Milton Abbas	Andy Smith	01258 880310
Cricket – Junior (U11 – U13)	Andy Smith	01258 880310
Football – Adult	Matt Hall	07846 262717
Football – Reserve Team	Tom Lane	07786 156335
Football – Under 15s	Glenn Chadwick	07766 542600
Football – Under 11s	Bob Mowlem	01350 751930
Modern Sequence Dancing	Grace Davies	01258 837261
Running Group	Anne-Marie Pearson	01258 837057
Skittles – Dewlish	Frank Ross	01258 837366
Sports Club		
Chairman:	Jenny Balcon	01258 837121
Bookings:	Alice Harrall	01258 837371
Table-tennis	Sandra Shannon	01258 837253
Tap Dancing for Men and Women		01258 880523
Yoga	Sue Chapman	01305 848053

## Village Hall

Dewlish		
Chairman:	Alex Carter	01258 837312
Sec:	Alex Carter	01258 837312
Milborne St. Andrew		
Chairman:	Richard Lock	01258 837929
Booking Secretary	Alice Harrall	01258 837371

## Moviola presents "The Tempest"

at Milborne St. Andrew Village Hall

on Wednesday 12th October at 8.00pm

*THE TEMPEST* begins with a shipwreck that sees the members of a royal court washed ashore on a mysterious island. Their fateful arrival, however, is no coincidence. The exiled duchess Prospera (Helen Mirren), the main character, in Julie Taymor's version of "The Tempest", has used her magical powers to guide the ship there to settle the score with these royals who banished her and her daughter (Felicity Jones) from their homeland twelve years ago. The action is set against evocative landscapes, in Hawaii on the black sand beaches and in the forests of Lanai and the Big Island from which Taymor takes many of her visual cues.

In this version of "The Tempest" Prospero becomes Prospera and is magnificently played by Helen Mirren with more ferocity than resignation. Prospera's daughter, Miranda (Felicity Jones), now seems more suited at her side; Prospera empathizes with her as Prospero never did. Indeed, all the relationships on the island curiously seem more natural when the character becomes a woman.

Prospera mixes her potions and casts her spells with the result that Prospera's journey spirals through vengeance to forgiveness as she reigns over a magical island and cares for her young daughter. With Miranda her behaviour is maternal, displaying a level of tenderness that Shakespeare may not have envisaged. It tempers her urge for revenge and broadens her character beyond the Machiavellian. With its thick, heady themes and endless dramaturgical possibilities, the play presents risks and temptations in equal measure.

The village hall is open from 7.45pm and the film starts at 8.00pm. Tickets £5.00 can be obtained from Alice Harrall on 01258 837371 or email [msa.moviola@gmail.com](mailto:msa.moviola@gmail.com) *Alice Harrall*



# Community Events Diary

Add your event to this diary by contacting the **Reporter** – tel: 01258 837957 or email: msa.reporter@yahoo.co.uk

## September

Thursday 29th

**Mosaic Pamper Evening** Hamworthy Club, Poole, from 7.00pm – see September *Reporter* page 19.

## October

Saturday 1st

**St. Andrew's Church Fair in the Square** Puddletown – see page 27.

**Hotpot Supper and Quiz Sports Club** 7.30pm – see below.

Wednesday 5th

**Wednesday Club** "Dorset Rescue Dogs" Village Hall from 2.00pm – see page 3.

**Ven Paul Taylor** will induct and install Rev Sarah Hillman as the Priest-in-Charge. Puddletown St. Mary's Church 7.30pm. All welcome – see page 26.



Thursday 6th

**Mosaic Charity Golf Day** Bulbury Woods Golf Club – see page 6.

Tuesday 11th

**Bell Ringing** for beginners – see page 3.

Wednesday 12th

**Moviola** *The Tempest* Village Hall 8.00pm – see page 16.

Thursday 13th

**WI** Jenny Peet, will reveal secrets of the Tudors under the intriguing title '*No Knickers*' – see page 5.

Friday 14th

**Milborne First School** Harvest Festival at St. Andrew's Church 9.30pm. All welcome – see page 7. **Reporter** final date for copy.

Saturday 15th

**St. Andrew's Church** Coffee Morning at "Rangemore", Chapel Street 10.30am–12noon. – see page 27.

Friday 21st

**Ranters Folk** Sports Club 8.00pm – see below.

Thursday 27th

**Gardening Club** talk by Michael Michaud on Immigrant Vegetables – see page 3.

Saturday 29th

**Concert** St. Andrew's Church, The Purbeck Recorder Consort – see page 27.

## November

Saturday 19th

**Christmas Market** in aid of St. Andrew's Church.

## Regular Bookings at the Village Hall

**Ladybirds Playgroup** Monday–Friday 8.30am–1.00pm MH (term time only)

**Beavers** Monday 6.00–7.15pm MH (term time only)

**Scouts** Monday 6.00–8.00pm CR/MH

**Players** Monday 8.00–10.00pm MH

**ABC Line dancers** Tuesday 7.30–10.00pm MH

**Cub Scouts** Tuesday 5.45–7.15pm MH (term time only)

**MSA Friendly Art Group** second and fourth Wednesday 7.00–9.00pm CR

**Wednesday Club** first Wednesday 2.30–4.30pm MH

**Gardening Club** fourth Thursday 7.30–10.00pm MH

**Healthy Eaters** Thursday 7.00–8.00pm CR

**Karate** Thursday 5.10–6.40pm MH

**Village Hall Committee** third Thursday 8.00–10.00pm

**Women's Institute** second Thursday 7.30–10.00pm

**Coffee, Cake and Computers** Friday 10.00am–12.00 noon CR

**Sequence Dancing** third Saturday 7.30–10.30pm MH

**Village Lunch** last Saturday of the month 12.15–2.30pm MH/CR

**Milborne Praise!** third Sunday 4.00–5.30pm MH

**Moviola** about every six weeks, look out for the posters, 8.00pm MH

**Artsreach Events** – look out for the posters.

Check Village Hall Notice Board for any other events that are one off for you to join in with.

## Other dates at the Village Hall

### Moviola

Wednesday 12th October *The Tempest* 8.00pm

Wednesday 23rd November *Midnight in Paris* 8.00pm

### ArtsReach

Sunday 4th December we are starting ArtsReach again featuring The Melstock Band with "Hardy Perennials". Favourite music, songs, stories and poems, from the works of Thomas Hardy and Dorset tradition.

## Regular Bookings at the First School

**Pilates** Monday 7.00–8.00pm (term time only)

**Yoga** Tuesday 6.15–7.45pm (term time only)

**Badminton** Wednesday 7.00–9.00pm (term time only)

**Circuit Training** every Thursday 7.00–8.00pm

## October at the Sports Pavilion

**The Busy Bees** Under Fives Playgroup from 9.30am to 11.30am on Thursday term time only. Contact Hayley Davis (07919156578)

**Folk Club** at 8.00pm on Friday 21st October. Contact Roger Harrall Tel. 837371 or email roger.harrall@gmail.com

**Table Tennis** from 7.00pm to 9.00pm every Monday evening. Contact Sandra Shannon Tel. 837253

**Hotpot Supper and Quiz** – Saturday 1st October at 7.30pm. Contact Roger Harrall Tel. 837371 or email roger.harrall@gmail.com

### Football

**Adult F/B training** – Tuesday evening – contact Matt Hall email mattyoona@hotmail.co.uk

**Under 15 Football** – training – Thursday evenings. Contact Glen 01305 861290 or email adedorset@hotmail.co.uk

**6–11 year olds** on Wednesday evenings. Contact Bob Mowlem on 01305 751930 or email bobmowlem@btinternet.com



## Ranters' Folk Session

is held at **Milborne St Andrew Sports Club** on the **3rd Friday of the month** at 8.00pm

Dates:

**Friday 21st October 2011**

**Friday 18th November 2011**



Come along and play a tune, sing a song, tell a story, recite a poem or just sit and enjoy the company.

For more details contact Roger or Alice on 01258 837371 or email rogers.rant@googlemail.com



# P J AIKEN LIMITED

INDEPENDENT FINANCIAL ADVISERS

4 Trinity Street, Dorchester, Dorset DT1 1TT

Telephone: Dorchester (01305) 266676

Fax No: (01305) 251569

[advice@pjaiken.co.uk](mailto:advice@pjaiken.co.uk)

## Specialists in:

Financial Planning

Investment Advice

Inheritance Tax Planning

Pensions and Retirement Advice

Life Assurance

Health Protection



*Security is Strength*

P J Aiken Limited is authorised and regulated by the Financial Services Authority



# HEALTHY PETS LTD

Come and see us for full dietary advice  
plus friendly service  
Full range of foods, treats and toys  
for your faithful friends  
Specialist in wild bird food

## DELIVERIES TO YOUR AREA EVERY FORTNIGHT

website - [www.healthypetsblandfordltd.co.uk](http://www.healthypetsblandfordltd.co.uk)

Unit One, Milldown Business Centre  
Shaftesbury Lane, Blandford, DT11 7TD

e-mail - [dave.healthypets@btconnect.com](mailto:dave.healthypets@btconnect.com)

**Tel: 01258 459066**

**Queen Thorne**  
LANDSCAPES  
HIGH CHILSEA SILVER OAK  
[www.queenthorne.co.uk](http://www.queenthorne.co.uk)

**Purveyors of the Finest Gardens**

**01935 850848**

**Extend your home and maximise  
your outdoor space**

Consultation  
Design  
Construction  
Ground Preparations  
Water Features  
Turving & Seeding  
Planting  
Renovations  
Wild Flower  
Meadows  
Lawn Care

As seen on the **BBC**



## PLEASE NOTE

All copy for the November *Reporter* must be received  
by the **14th October**.

Please send copy via e-mail as a Microsoft Word  
attachment and photos are best sent as  
a separate JPG file.

We regret that late submissions will not be included.

**Volunteers occasionally needed to deliver the  
*Reporter* magazine to cover for holidays**

**Selling a car? Can't face the ...**



**hassle?**

We buy cars, bikes, campers and vans for cash at a time to suit  
you. Trading in elsewhere? We can usually offer more ...  
**Halcyon Motors**, now based in Milborne St. Andrew, is a small,  
friendly business and we will happily come to you. Impartial  
advice comes free!

**Buying?** Visit [www.halcyonmotors.co.uk](http://www.halcyonmotors.co.uk) to see "warts and  
all" descriptions and photos of our current stock. Warranties  
with all cars. Part exchange welcome. Call **Don MacLeod**  
01258 839152 or 07782 189555 (Mon - Sun, 8.00am - 9.00pm)

# Distraction burglary – help your community to be safe

THE definition of distraction burglary is when a one burglar distracts the occupant of a house so that the other can quickly gain access and steal items.

What the definition does not do is describe the devastation this can leave behind for those who have become victims. However astute you are, it can happen to anyone of any age. It is the elderly and vulnerable who are particularly targeted and an incident of this kind can leave them with their confidence shattered and afraid to open the door.

As a family member, friend, carer or neighbour, you can really help the potentially vulnerable people you know from becoming a victim of this unpleasant crime.

Houses and gardens that are not cared for often indicate someone who is struggling to maintain their property and it is these places that are being sized up by distraction burglars.

If your friend or family member is in this position, you can help by offering to mow the lawn and tidy their garden or help get the house painted. You really can make a difference in preventing this crime.

Chains on the door are an essential and everyone should use a chain to answer the door if it is not someone they know. So often elderly people have come from a trusting generation where doors were left open and they are lonely and welcome a chat. These burglars are expert at offering a friendly word to distract your attention. Always make sure your back door and windows are shut and locked if you answer the front door.

The Water Board does not exist any more, but the name is often used as a means of entry.

Everyone should have a good quality chain and locks on their door and windows and don't let anyone into the house unless you are sure they are genuine. Always ask for identification and then check the

telephone number from the phone book before allowing anyone in. A genuine official won't mind waiting while you phone to check they are in your area.

Tell your family and friends never to do business on the doorstep or agree to work being done for cash with no documents or time to consider. (You legally have 10 days to reconsider). Cash stored in the house is a bad idea – so encourage the people you know to put money in the bank or building society. If they are distance away – offer to drive them there when they need to withdraw money.

Elderly people are sometimes taken to their bank or building society by distraction burglars to withdraw large sums of money to repair a roof that does not need doing or tarmac a driveway. Most of the time they promise to return to do the work the next day and then take the money and run.

Regular phone calls and visits make all the difference and you can help remind people of these tips, particularly if they forget things easily. A notice by the front door can remind them to use the chain or check an identity.

Finally, Dorset Police is here to help. If you feel that you are being targeted by distraction burglars or feel threatened, dial 999 straight away. We have successfully returned thousands of pounds to victims because we have been notified in time.

If you have been a victim in the past – don't feel foolish – it can happen to anyone. Call us on our non emergency number 01202/01305 22 22 22 and report it and you may save someone else from being a victim.

To download a copy of the notice to place by the door or hand to someone who is vulnerable click on the following link:  
[www.dorset.police.uk/pdf/BeSureBeSafe.pdf](http://www.dorset.police.uk/pdf/BeSureBeSafe.pdf)

## Hustings Electrical Ltd

Est 1980

### Now fitting solar photovoltaic energy

Would you like to produce your own energy?

Help the planet? And get **PAID!**

Call today for introductory prices and more information, fully MCS registered and NICEIC.

All other types of electrical work carried out including industrial, domestic, agricultural, commercial, test and inspection and many more.

Visit [www.hustingselectrical.co.uk](http://www.hustingselectrical.co.uk)

or call

**01258 837385**

**07966 403965**



Large Beer  
Garden

11 En Suite  
Letting Rooms



The Fox Inn

Ansty

Private Parties  
Welcome

Function Room  
Available

Thursday 20th October

Our Ever Popular INDIAN NIGHT!  
All you can eat . . . just £12.95 per person  
Booking advisable

Main Course Lunches from just £5.00  
Available every Monday to Friday

Fresh Cream Teas available daily  
3.00pm - 6.00pm

For reservations please call 01258 880328 or drop in and see us

Ansty Dorchester Dorset DT2 7PN  
[www.anstyfoxinn.co.uk](http://www.anstyfoxinn.co.uk)

## Milton Abbas Neighbourcar



*Do you need transport for surgery visits  
and other appointments?*

Milton Abbas Neighbourcar is a voluntary transport scheme covering the area served by Milton Abbas surgery. We can take you to medical appointments and social events.

Ring 01258 881709 to register and for more information.

landscaping... *in Arcadia*  
planting plans • garden designs • gazebos  
pergolas • patios • decking • steps • ponds  
turfing • paving • stonework • brickwork ...  
[www.inarcadia-gardendesign.co.uk](http://www.inarcadia-gardendesign.co.uk)  
[inarcadiagardens@gmail.com](mailto:inarcadiagardens@gmail.com)  
t. 01305 853 731  
m. 07789 076 991  
garden design...



# COLIN J. CLOSE FUNERAL SERVICE



*A family run business,  
serving the local community of  
Blandford and surrounding district*

CHAPEL OF REST  
PRE-PAYMENT PLANS

24 HOUR SERVICE  
MEMORIAL MASONRY

**PEEL CLOSE, SALISBURY ROAD, BLANDFORD**

Tel: 01258 453133

Email: [info@close-funeral.co.uk](mailto:info@close-funeral.co.uk)



*Also at Cemetery Chapel  
Sturminster Newton*

[www.grassby-funeral.co.uk](http://www.grassby-funeral.co.uk)

## Become a Neighbourcar driver and be a part of the “big society”

MILTON ABBAS Neighbourcar has been in operation since May 2010 during which time we have carried out over 800 journeys covering nearly 12,000 miles. This service is provided for residents within those villages forming the catchment area of the Milton Abbas surgery including Ansty, Cheselbourne, Dewlish, Hilton, Ibberton, Melcombe Bingham, Milborne St. Andrew, Milton Abbas, Winterborne Clenston, Winterborne Houghton, Winterborne Kingston, Winterborne Stickland, Winterborne Whitechurch and Woolland. We now have 120 residents of these villages registered to use our community transport service and 30 volunteer drivers providing the service.

That’s the good news! The bad news is that there are times when we are unable to meet people’s needs because our drivers are not available for a variety of reasons (yes – our volunteers do have a life outside of Neighbourcar!). They may be unwell, on holiday, visiting or receiving friends and family; or they may be working for other voluntary driving organisations – a number of our drivers are now registered with more than one community transport scheme/group.

The voluntary sector is growing rapidly as are the needs of the beneficiaries of that sector. We are now regularly taking our clients to hospitals as far away as Bournemouth, Sherborne or Weymouth for outpatient appointments or for “day operations” and this growing tendency is stretching our resources to the limit.

For this reason I would ask you to consider becoming a volunteer driver with Neighbourcar. You can do as much or as little as you wish but whatever your commitment you will find it very rewarding knowing that you have helped and supported your immediate neighbours and other members of your community. And it just gets better – we will reimburse you at a rate of 45p for every mile you travel providing the Neighbourcar service.

If you would like to learn more about becoming a driver for Neighbourcar please ring Nigel Hodder on 01258 881709 or email nigel2749@tiscali.co.uk

*Nigel Hodder*

## Homewatch Newsletter Blandford South, August 2011

### Local incidents

Date	Village	Incident	Location
12th Aug	Milborne St. Andrew	Burglary – Non dwelling – Aga	Milborne St. Andrew
21st Aug	Milborne St. Andrew	Theft from Motor Vehicle – Sat Nav / GPS	Homefield
23rd Aug	Milborne St. Andrew	Burglary – Non dwelling – Nothing stolen	Blandford Hill Ind Est
23rd Aug	Milborne St. Andrew	Burglary – Non dwelling – Attempt	Blandford Hill Ind Est
31st Aug	Milton Abbas	Criminal Damage – Gate and fence	Milton Abbas

### Car Crime Advice

Don’t leave anything on display – it’s a prime invitation to passers-by. Even an old coat or plastic bag can tempt a thief. If items have to be left in the car, put them out of sight at the start of your journey.

Portable ‘Sat-Nav’ systems are often held in a cradle attached to the windscreen or dashboard in full view, so take it out of the car and place the cradle out of sight in the car boot.

Mark the ‘Sat-Nav’ with your postcode and house name or number. Make a note of the make, model and serial number and register it free of charge on the National Property Register at [www.immobilise.com](http://www.immobilise.com).

# THE RURAL 'G'

## Homewatch Newsletter Blandford Rural September 2011

### Steam Fair Success

The Blandford Safer Neighbourhood Team’s Operation, which runs along the Great Dorset Steam Fair, has been deemed a great triumph by members of the local community and Senior Officers within Dorset Police.

The Operation sees local SNT Officers based at a Temporary Police Station in Tarrant Hinton. They flood the villages surrounding the Great Dorset Steam Fair during a two-week period, providing high-visibility foot, cycle and car patrols. The Officers visit vulnerable addresses and premises, offering reassurance to residents and businesses. They also provide an essential communication link between local people and businesses, gamekeepers, Steam Fair organisers and the temporary traveller’s site security.

During the two-week period, only three crimes were reported to Dorset Police, which occurred within the Operation area. It doesn’t show a significant increase when compared to the same period of time in previous years, which is a positive result. This figure does not include crimes reported within the Steam Fair site itself; these crimes are recorded as a separate location due to nature of hosting a festival of this size.

Further to the SNT Operation, Dorset Police’s traffic department worked alongside local Officers to enforce the speed limits in the area along with a range of other traffic offences. Operation ‘No Excuse’ aims to make Dorset’s roads safer by improving driver behaviour through the enforcement of offences which are likely to increase the risk of collision or which could result in more serious injuries or death.

We would like to thank Tarrant Hinton Village Hall Committee for the use of their facilities during this time. We would welcome any feedback, positive or constructive, regarding the operation. Please communicate this via any of the lines of contact listed below, for the attention of PC 2201 Rich Barnes.

### Rural South Temporary Changes

With effect from 7th September 2011, PC Dave Mullins will be



temporarily posted to Ferndown for a period of three months. Due to staff shortages in other areas within the force, PC Mullins has been requested to help the response section working from Ferndown Police Station. PC Dave Mullins would like it to be known that this temporary posting should not significantly affect the Safer Neighbourhood Team’s

capacity to deal with any local issues in his short-term absence. PC Rich Barnes will be working closely with PCSO’s Luke Goddard and Rich Mullins to help cover the area. Dave would like to thank all local parishioners for their help and support and looks forward to returning to his permanent position of Rural South Community Beat Officer on 12th December 2011.

Anyone wishing to report a crime should call on 01202 222 222. Anyone wishing to report an incident in progress, that requires urgent Police action, for example suspicious circumstances happening now, should call 999.



**All aspects of Tree Surgery undertaken by  
NPTC Surgeons**

**Commercial & Domestic**

**Fully Certified & Insured**

- Re-Shaping
- Reductions
- Pruning
- Dismantling
- Section Felling
- Hedge Cutting
- Stump Removal
- Equipment Hire
- Land & Site-Clearance
- 24 Hour Emergency Call Out
- Free Estimates

**Quality Seasoned Hardwood Logs**

Loads at £70 and £150

Free Delivery throughout the area

Kindling & Wood Chippings Available

Hardwood and Softwood Planking

**Tel/Fax: 01258 837377**

Mobile: 07971 276980

[www.countytreeservices.com](http://www.countytreeservices.com)

E-mail: [info@countytreeservices.com](mailto:info@countytreeservices.com)

# GRASSBY FUNERAL SERVICE



*Still a family run business,  
serving the local community  
since 1861*

CHAPEL OF REST

24 HOUR SERVICE

PRE-PAYMENT PLANS

**8 PRINCES STREET, DORCHESTER**

Tel: 01305 262338

Email: [info@grassby-funeral.co.uk](mailto:info@grassby-funeral.co.uk)

**MEMORIAL MASONRY**

*Memorial Showroom at  
16 Princes Street, Dorchester*



[www.grassby-funeral.co.uk](http://www.grassby-funeral.co.uk)

# Have you met . . . Ian Joyce

## I need a mechanic – now – who shall I ask . . .

IAN is a rare commodity, not only was he born in the village, he has actually managed to work within three miles. Not many of our youngsters have managed it. And – he has got gorgeous twins, a stunning wife Kelly (according to Ian) and a lad to be proud of, and lives just next to the cutting (called The Drawn) through from The Causeway to Chapel Street. Ian and his brother, Neil, were born at the old Dorchester Hospital, in Princes Street, his mum and dad, Helen and John live in the village. He says “My dad is my inspiration, because of his character and his ability to keep going”. His first home in the village was an ex-café right next to where the BT exchange is now, it was an old wooden building with a static van behind. Ian can remember cycling around inside the café! He went to Milborne, Puddletown and Hardye/Thomas Hardye Schools, he liked the social side, didn’t much like the learning, it wasn’t practical enough.



Ian has been playing with bikes, and working on cars for ever; he did his work experience at Volvo in Dorchester and ended up doing an apprenticeship with them. He then went on to work with his Dad, who had a garage in “Alners Yard” now called Crown Court, then Ian joined him in the workshop at the barns up Coles Lane and now at Gorse Hill on the way to Milton Abbas. So he is really experienced – but can still do some daft things, like the time he put a clutch in back to front! You

may have seen him, about seven years ago, riding around the village on ridiculously little bikes, called Monkey Bikes, he says they are now piled up in his garage, along with his Porsche. Life seems to have become a little too busy lately says Ian. “My hobbies are very much linked to my work, making radio controlled models, like helicopters,

cars and planes, and motor cycling, just around on my Harley, I’m saving up for the sidecar! I have never been a ‘club’ person.”

Ian loves living in the village, although Kelly commented that the downside is that Ian never wants to leave it! His pet hates are that the houses in Milborne are so expensive, especially for young marrieds. Oh – and the dog mess and litter in certain places in the village.

Ian says “My claim to fame is that, while down in Weymouth crossing the road by the Alexandria Gardens I heard a screech of brakes, turned round, and the Chuckle Brothers had just tried to shorten my life!”

“I’ve been in the dog house a couple of times, especially when I bought a Porsche, and I already had one in the garage. I have bought loads of impulse mechanical things; the thought is ‘if I don’t buy that now, I’ll never have the chance again’ the excuse is ‘it’s an investment’, I’ll find out in 50 years if that’s true.”

Guess what TV programme I like – Top Gear!

Sue Gould and Heather Hogg

Tel: 01258 837352 enquiries@oakpub.co.uk

**THE OAK**  
at  
**Dewlish**

At The Oak at Dewlish, we pride ourselves in serving a regularly-varying range of real ales. We also want you to enjoy every mouthful of our food. This is why we strive to bring you delicious dishes that combine the best of English pub food, with ingredients from the local farms and nearby producers. We have 4\* self catering accommodation and 2 newly furnished ensuite B and B rooms.

**Due to popular demand, the FRENCH SPECIAL NIGHT is back**

Come on

19 OCTOBER 2011  
from  
6:30 pm onwards  
And enjoy our French Cuisine  
please book in advance

www.oakpub.co.uk

**Susie Edwards**  
**Floral Designer**

\* Cut flowers, bouquets and arrangements  
for every occasion \*

\* Specialist in Wedding flowers \*

\* Bespoke funeral tributes \*

01258 837933 07860 546468

Major cards accepted –  
48 hrs. notice appreciated

I can send flowers across the UK

susie@susie-edwards.co.uk  
www.susie-edwards.co.uk

*Frogmore Cottage, Milton Road*  
*Milborne St. Andrew*

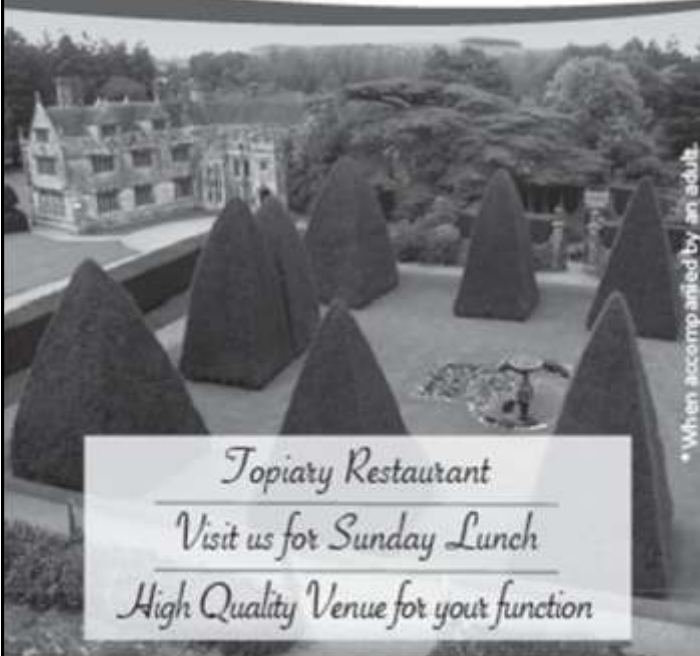
**Your local florist**

Children  
under 16 free entry\*



## Athelhampton *House & Gardens*

*Visit one of the outstanding historic Manor houses of England*

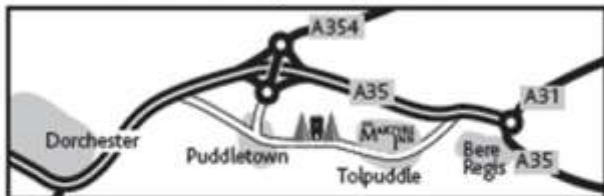


\*When accompanied by an adult

*Topiary Restaurant*  
*Visit us for Sunday Lunch*  
*High Quality Venue for your function*

### *Opening Times*

March to October Sun to Thur 10.30am to 5.00pm  
November - February Sun only 11.00am to dusk



Athelhampton, Dorchester, Dorset DT2 7LG  
01305 848363 enquiry@athelhampton.co.uk  
www.athelhampton.co.uk

## THE MARTYRS INN TOLPUDDLE

Come and visit the Martyrs Inn and enjoy the informal atmosphere, contemporary styling, our outside large south facing patio and enjoy a leisurely drink or meal.

View our great new menu online

01305 848249

www.themartyrsinn.co.uk



**Under New Management**

## Philip Noyes

## Garden Services

Tel: 07736415357 01258 839129

pbnoyes@yahoo.com

- ◆ Garden maintenance
- ◆ One off tidy ups
- ◆ Overgrown garden clearance
- ◆ Large or small gardens
- ◆ Rotovating
- ◆ Turfing
- ◆ Planting
- ◆ Garden design
- ◆ Fencing
- ◆ Landscaping
- ◆ Weed control



# LOGS

£65.00 per load

contact

Mark Revell

Milborne St. Andrew

837 536

## KMc Electrical Services

Your local Photovoltaic installer

Call for a no obligation discussion, survey and quotation

Earn income and save on your electricity bills by:

- Receiving 43.3p for every unit that is generated
- Selling unused electricity back to the supplier @ 3.1p per unit
- Save on your electricity bill by using the electricity that you generate
- All types of electrical work undertaken
- Test & Inspection of building wiring
- Extra points to full rewiring
- Professional, Quality service

Tel: 01258 881439

Mob: 07712 646131

Email: km.electrical@btinternet.com







**designer Gardens**  
Professional Garden Designer - designing and creating beautiful gardens and landscapes

-  Creative and practical designs to suit all styles of garden
-  Project management from design to completion
-  Construction by experienced quality landscapers
-  Planting schemes and border designs

**Maureen Lock**  
16 Huntley Down  
Milborne St Andrew

www.designergardens.biz

t: 01258 837929 m: 0778 660 8776 e: maureen@designergardens.biz




## In your Garden

### Seasonal notes and tips from Maureen Lock of *Designer Gardens*

# Your Garden in October

DON'T be lulled into thinking that now things are starting to die off for the winter there is nothing to do in the garden – in fact it is a really busy time with loads to do.

Collect up fallen leaves, split perennials that have grown too large and protect plants and pots from the impending frost. Wrap up your tender plants in horticultural fleece and wrap the pots in bubble wrap. If the roots freeze in the pot, then the plant is likely to suffer the following year; the bubble wrap will also help stop the pot (if it is terracotta) from cracking. Another way to protect your clay pots is to raise them from the ground with pot feet – this will stop the water freezing around the base and aid good drainage.

If you are going to split large clumps of perennials, wait until the soil is quite moist – this will make the job much easier – and then get two forks, push them into the middle of the clump and pull apart. Job done. Keep the best section and replant. This is a great way to increase your plants for nothing if you have the space!

Climbing and rambling roses should be pruned now to ensure that you get a good all-over flowering next year. If left, they tend to flower on the top only. You can also prune bush/shrub roses lightly now, this will reduce their height and prevent them being damaged by the wind. Some of the shrubs that were pruned hard back in the spring such as Buddleia, Cornus alba and Lavatera can be cut back by half to prevent wind-rock damage and keep them looking neat.

October is an ideal time to attend to your lawn. You need to scarify it

to remove built up layers of dead material and moss (thatch) and then aerate it (spike it) with a garden fork to reduce compaction and aid drainage, top dress with a mixture of loam, sand and compost and finally apply an autumn feed. If toadstools and fairy rings appear in the lawn, it is a good indication that scarification and autumn lawn care is necessary.



#### Shade Loving Plants

As the days get shorter, there are particular areas of the garden that become quite shady and it is often difficult to decide what to grow in these areas as the plants will be lacking two vital ingredients – water and sunlight. You can help improve the soil by mixing in some organic matter – compost or well-rotted manure will do, and this will help increase the soil's water retention. It's a bit like adding a sponge to the soil. Climbers that will grow in

shady areas are *Holboellia latifolia*, and honeysuckle *Lonicera 'Mint Crisp'* – both useful evergreens. For ground cover you can plant many spring flowering plants such as cyclamen, pulmonaria, hellebores, snowdrops and scilla – these will all flower in a shady position.

#### The Wild Flower Meadow

Just an update on the wildflower meadow behind the village hall – it has been establishing really well this summer – they generally take three or four years to establish. I have been lucky enough this year to obtain lots of wild flower seed from a meadow nearby which will be sown soon and should provide a good show next year.



**CHRIS PERRINS**  
CHIMNEY SWEEP  
www.csweep.co.uk



Also:

- HANDYMAN ▪ INSIDE/OUTSIDE PAINTING
- GARDEN MAINTENANCE ▪ HEDGE TRIMMING/LAWN MOWING

Enquiries welcome, call: 01305 849470 / 07824 698109



THE BENEFICE OF PUDDLETOWN, TOLPUDDLE AND MILBORNE WITH DEWLISH  
PART OF THE CHURCH OF ENGLAND IN THE DIOCESE OF SALISBURY

## Raise the song of harvest home!

Harvest brings back vivid sights and sounds from childhood. Kilner jars warming, ready for the bottled fruit; wasps trying out the jam in the saucer placed on the window-sill to test its 'set'; apples being wrapped in newspaper and carefully stored in the dark cellar; shallots drying on old sacking in the mellow autumn sunshine; the smell of vinegar from the pickling. It's such a visual, tactile and olfactory season.

My title comes from the words of the hymn, "Come ye thankful people come", written by Henry Alford (1810-71) when he was vicar of Wymnswood in rural Leicestershire for eighteen years. He picked up the traditional phrase 'Harvest Home!' (he uses it five times in three of the four verses) and then develops this theme of harvest as a metaphor for the Christian life. Alford is making a link between the material of the harvest and what it produces and between life and what we produce. "Bring thy final harvest home: Gather thou thy people in, / Free from sorrow, free from sin; . . ."

Making the link between raw material and finished product is essential, whether in a life well lived or grain well farmed. When I served in a mining parish a (very large) lump of coal occupied centre stage in front of the communion table, reminding all where energy, warmth and wages came from. The harvest loaf filled the same purpose. Years ago Coventry Cathedral had a Massey Ferguson tractor in the building one year and a BMC car another year. Both products came from factories within the parish where I was curate and both tried to make this link between raw material and finished product.

What if we were to extend the visual aid? What if we had a pallet load of £50 notes in Salisbury Cathedral and a banker, mortgage broker or financial adviser on hand to tell us how they use the raw material of money to help create human well being, economic prosperity and housing for young people and first-time buyers. How then might inappropriate loans, mega bonuses and commodity trading appear? Or what about inviting our elected representatives, local, regional and national, to come to harvest festival and tell us how their decisions, their raw material, have improved our lives, for example, decisions about the library service?

Alford tried to make a link between the Christian life well lived and eternal life. The harvest loaf in church, the tractor in the cathedral and my speculative banker and politician make a similar point. How do we use our God given gifts and resources to benefit all humankind?

*Roy D Bennett*

## MILBORNE ST. ANDREW CHURCH NOTES

### Welcoming Sarah to our benefice

WHERE HAS the summer gone? We have had a busy couple of months on organisation and administration and, with lots of projects on-going, life has been fairly hectic for us as churchwardens. We think our summer services went well and would like to thank everyone who officiated at our services for their help. This allowed Sarah Godfrey to have a well-earned holiday.

We now look forward to a new beginning and welcome Sarah Hillman to our Benefice. Her **Licensing Service** will be in Puddletown Church on **Wednesday 5th October** at 7.30pm. There will be refreshments served in Puddletown Village Hall afterwards for everyone to meet her. If you require a lift, please let Eva Stockley (Tel: 837468) or Pat Tribe (837684) know.

### Athelhampton House Five Churches Fete

Once again the weather was very warm and sunny, which brought out the families to enjoy a very interesting afternoon. This is an occasion where we all work together for the benefice in a friendly and good-humoured way. St. Andrew's Church raised £292. We would like to thank everyone who gave us goods for sale and who helped on the stalls. Many thanks to Athelhampton's owner, Mr Patrick Cooke, for allowing us to use such a wonderful venue for this event.

## CHURCH SERVICES October 2011

### 2nd OCTOBER – Trinity 15

9.30am	Family Communion	Milborne
11.00	Holy Communion <i>(with Sunday seekers and crèche)</i>	Puddletown
4.00pm	Tolpuddle Praise	Tolpuddle Village Hall
6.00	Harvest Service	Dewlish

### WEDNESDAY 5th OCTOBER

7.30pm	Induction and Installation of Rev Sarah Hillman	Puddletown
--------	--	------------

### THURSDAY 6th OCTOBER

12.00	Lunch-time Communion	Milborne
-------	----------------------	----------

### 9th OCTOBER – Trinity 16

8.15am	1662 Said Communion	Puddletown
9.30	Methodist Joint Service	Tolpuddle Chapel
9.30	Parish Communion	Milborne
11.00	Family Service	Puddletown
11.00	Family Communion	Dewlish

### 16th OCTOBER – Trinity 17

9.30am	Family Communion	Tolpuddle
9.30	1662 Said Communion	Milborne
11.00	1662 Morning Prayer	Puddletown
11.00	Holy Communion	Dewlish
4.00pm	Milborne Praise!	Milborne Village Hall

### THURSDAY 20th OCTOBER

12.00	Lunch-time Communion	Puddletown
-------	----------------------	------------

### 23rd OCTOBER – Last Sunday after Trinity

9.30am	Holy Communion	Tolpuddle
9.30	1662 Parish Communion	Milborne
11.00	Children's Society Family Communion <i>(with Sunday seekers and creche)</i>	Puddletown
11.00	Family Service and Baptism	Dewlish

### 30th OCTOBER – All Saints Patronal Festival

11.00am	Benefice Holy Communion	Dewlish
---------	-------------------------	---------

### Flowers – w/e Saturday



1st and 8th October	Helen Pugh and Hilary Daffern
15th and 22nd October	Marion Reagan
29th October and 5th November	Lin Chatfield

### Church Cleaning – w/e Saturday

1st October	Victoria Bone and Lin Chatfield
8th October	Ed and Rose Frost
15th October	Sue Lee and Val Hodges
22nd October	Josie Wright and Pat Tribe
29th October	Carolyn Martin and Elizabeth Walker

### Forthcoming fund-raising events

We shall be running a tombola stall at the Puddletown "Fair in the Square" on **Saturday 1st October** followed a fortnight later by a **Coffee Morning** on **Saturday 15th October** at "Rangemore", Chapel Street, Milborne, from 10.30am – 12noon. There will be a bring and buy stall, a raffle and lots of coffee and biscuits. All proceeds will go to the church "Flush Fund".

### Concert of Recorders and Voices

Come to a concert with a difference! It is not often that you get the chance to hear recorders played in consort. A common reaction might be: "What? Recorders? Those little screechy instruments that small children learn at school? No thank you!" But descant recorders (the size on which children usually begin) are not screechy when played well and they are only one size of a large family of instruments. In the concert at **St. Andrew's Church**, Milborne, on **Saturday 29th October** you will hear them played with trebles (a lovely mellow sound), tenors (a little deeper), and basses (think of a gentle bassoon sound). The ten members of the Purbeck Recorder Consort, ably led by David Cook, have been playing together for several years and offer a repertoire that ranges from William Byrd through Bach to The Beatles. To this add the lovely voices of Marion and Nicki (better known as "Celeste") and it will all make for a very enjoyable and entertaining evening. There will be wine, soft drinks and nibbles in the interval. Tickets (£6.00 each) are available from Eva (Tel: 837468) or Pat (837684) or at the door. (Children of middle school age and younger – free).

### Building and works programme moving ahead

At the PCC meeting on 5th September we discussed the building and works programme. Work should soon be commencing on the roof repairs which is part of the quinquennial report. We have applied for a grant from the Dorset Historic Churches Trust to help cover this expense. Tenders have been received for the toilet and kitchenette project; these are being discussed with the architect. We are progressing with applying for grants to help cover some of the cost. The grant of £15,000 has now been received from the Erskin Muton Trust, which is a great help. We will still have to do more fund-raising ourselves and, for that reason, we hope people will

#### Church Contacts

<b>Priest in Charge</b>	Sarah Hillman	01350 848784
(from 6th October)		
<b>Associate Priest</b>	Sarah Godfrey	01258 839067

#### Church Wardens

<b>Milborne St. Andrew</b>		<b>Dewlish</b>	
Eva Stockley	01258 837468	Jim Burg	01258 837466
Pat Tribe	01258 837684	Sue Britton	01258 837218

[www.milborneandrewchurch.org.uk](http://www.milborneandrewchurch.org.uk)

## 100 CLUB WINNERS

Draw Date – Tuesday 13th September 2011

1st prize	£100	John Tissman
2nd prize	£50	Eva Stockley
3rd prize	£8	Andrew Wilson

The next draw is at 8.00pm, in The Royal Oak, on Tuesday 19th October 2011  
Everyone is welcome to attend

New members always welcome. Contact  
June Maitland 837235 or Denise Sanderson 837049

support the many activities we are advertising above. The church Christmas cards are at the printers. Watch the notice boards for their availability. They will be on sale in the church and at all our fund-raising events.

### Notes for your diary

**Sunday 13th November:** Remembrance Service

**Saturday 19th November:** Christmas Market

**Sunday 27th November:** We hope to celebrate St. Andrew's Festival.

Further details will be in the November Reporter.

Eva Stockley and Pat Tribe (Churchwardens)

## DEWLISH CHURCH NOTES

### Produce stall produces best-ever product!

WHAT lovely weather we had for the Five Churches Athelhampton Fete, which was also very well attended, and much enjoyed. We are so grateful to Mr Patrick Cooke for allowing us to use his splendid grounds.

Dewlish ladies ran the jams, marmalades, pickles and produce stall, and I am delighted to report that we raised £302, which was the best we have ever done. A final total for the whole fete will be reported later. A big thank-you to all who helped.

Our **Harvest Festival** will be held on **Sunday 2nd October** at 6.00pm. The **Supper** the following evening will be staged in the Village Hall, starting at 7.00pm. This will be followed by the **Auction of Produce**, the proceeds of which will be donated to charity.

The **Benefice Service**, to be held at Dewlish on **Sunday 30th October**, will celebrate our Patronal Festival. Refreshments will be available in the Village Hall following the service. *Daphne Burg*

# A Concert will be held in St. ANDREW'S CHURCH of RECORDERS *The Purbeck Recorder Consort* and VOICES

*Marion and Nicki, known as Celeste*

## SATURDAY 29th OCTOBER

**7.30pm**                      **Tickets £6**

**Middle School Children and under FREE**

**Interval drinks and nibbles**  
**Further details in Church Notes opposite**

Copy for the November Reporter by 14th  
October to [m.s.a.reporter@yahoo.co.uk](mailto:m.s.a.reporter@yahoo.co.uk)

**A luxury lawn is just a phone call away**

*£5 off 1st treatment when quoting this advert*

- Seasonal treatments providing a lush green weed-free lawn
- Professional care at cheaper than DIY prices
- Safe for children and pets
- Local, friendly family run service backed by national resource and expertise
- Prices from £15

**Greensleeves**  
L·A·W·N·C·A·R·E  
Quality Lawn Care at an Affordable Price  
For a free quote and lawn health check call:  
Freephone 0808 100 1413  
Peter / Linda 01258 839255

Your LOCAL lawn care specialists [www.greensleeves-uk.com](http://www.greensleeves-uk.com)

**Printer, copier, fax?  
The place to get it...**

**Cartridge Family**  
ESTABLISHED IN DORSET SINCE 1998

- Inkjet & laser toner cartridges, faxfilm, ribbons, paper & memPods
- Cash-Back on empty cartridges & mobile 'phones

**recycle**

The Rural Business Centre, Winterborne Whitechurch, Blandford, Dorset DT11 9AW  
Call: 01258 880050 or 01258 880034  
e: [cashback@thecartridgefamily.co.uk](mailto:cashback@thecartridgefamily.co.uk)

Member of South Wessex Waste Minimisation Group and committed to Local Agenda 21

**HASKINGS FENCING**

Supply - Installation - Repairs  
**Fencing and Gates**

Agricultural - Domestic - Security  
Free estimates

01305 267549 / 07870 891118

25 years experience, fully insured

**Sohani Gonzalez**  
B.A., M.C.H., R.S.Hom

Registered Homeopathic Practitioner with over 28 years experience in Sussex, London and Dorset

- Nutritional and Dietary advice
- Allergy Testing

Homeopathic medicine is over 200 years old. It is popular worldwide because of its effectiveness, safety and its ability to treat all kinds of physical and emotional problems.

Consultations available in the Blandford Forum and Dorchester areas

**Please call for an initial appointment**  
**01258 839043**  
[www.sohani-homeopathy.com](http://www.sohani-homeopathy.com)



In need of a Window Cleaner?  
**Darren and Sarah**  
for a friendly and reliable service

**Clear vision**

Fully insured for complete peace of mind  
For that clearer vision just call:  
**01929 462273 / 07704 656777**

Domestic and Commercial  
Gutters Downpipes Facias Soffits  
Conservatories Flash Roofs



## Local small-ads

Small ads of less than 30 words from local, private, advertisers are published **free of charge**

**For Sale – Small computer desk**, good condition, £10.00. Tel 837121.

**Free garden shed**, but you will have to dismantle it and take it away!  
Wooden 6 x 4. Telephone 837337.

**Send your copy to [msa.reporter@yahoo.co.uk](mailto:msa.reporter@yahoo.co.uk) by the 14th of the month please**

## Round Robin Ramblers

*the local villages walking group*

WALKS are normally held on the first Sunday and the third Wednesday of each month. Please join us as we enjoy exercise, good company and the wonderful Dorset countryside.

**Any questions, please feel to contact: Ian Bromilow, 01258 880044.**

**Sunday 2nd October – 2.00pm**

**Charlton Marshall**

Meet at St Mary's Church, Charlton Marshall, on A350 from Blandford Forum.

Grid reference: ST 900041 on OS Explorer Sheet 117 (approx. 4.5 miles)

**Wednesday 19th October – 11.00am**

**Dewlish and Milborne St. Andrew**

Meet at All Saints Church, Dewlish.

Grid reference: SY 775982 on OS Explorer Sheet 117 (approx. 6 miles)

**Sunday 6th November – 2.00pm**

**Child Okeford and Shillingstone**

Meet near the Bakers Arms Pub, Child Okeford.

Grid reference: ST 834126 on OS Explorer Sheet 118 (approx. 4.5 miles)

### Please note:

- WHO** All welcome including well-behaved dogs and their responsible owners. No pre-booking required just turn up.
- WEAR** Suitable clothing for conditions and location, walking boots or Wellington boots.
- BRING** Waterproofs and refreshments (packed lunch on Wednesdays).
- PACE** We go at the pace of the slowest.
- TERRAIN** Expect mud, inclines and stiles.
- AIM** Keep fit, enjoy the Dorset countryside and each other's company.
- LEGAL** We look after one another but in the end you are responsible for yourself.

## Milborne 100 Club

1st PRIZE £100    2nd PRIZE £50  
3rd PRIZE depends on number of members paid

For information contact:

John Sanderson Football Club 837049

June Maitland Church 837235

Pat Tribe Church 837684

Denise Sanderson Collector 837049



## Cheselbourne Theatre Club



A REMINDER that our **AGM** takes place on **Monday 3rd October 7.30pm at Cheselbourne Village Hall**. All are very welcome to attend this meeting, which will be followed by drinks and refreshments.

There may be some availability for **Persuasion** by Jane Austen adapted by Tim Luscombe, on Monday 7th November. Please phone Ann if you are interested.

Advance warning – we need bookings by 2nd November for the Playhouse Christmas Panto, Jack and The Beanstalk, on 4th January 2012 at 2.30pm, when travel will be by car. Tickets cost £15.00.  
Ann Allum 880074; Stephen Terry 881524; Chris Higgs 880073

### Future Blandford and Villages

The DT11 Green Group will present an evening of information and discussion on the challenges of Peak Oil and Climate Change, and how Blandford and its surrounding villages can respond.

**13th October at 7.30pm**

**at the Parish Centre**

**The Plocks, Blandford Forum**

There will be a short film on Transition Towns and a talk by a member of a neighboring transition town.

For more information contact DT11 Forum office at [office@dt11forum.org.uk](mailto:office@dt11forum.org.uk) or call 01258 489998.

**Old Washing Machines, Cookers,  
anything metal  
removed free  
of charge**

**REGISTERED CARRIER**



Please call: **01258 837100**

**A.J. LAKE**  
**Painting & Decorating**

**Interiors & Exteriors**

**FREE quotes**

**25+ years experience**

**References available**

**No job too BIG or SMALL!**

**Tel: 01258 837 687**

**Mob: 07989 817 826**

## Greenways Tree Care

### and Garden Services

(fully insured)



Felling  
Reductions  
Pruning  
Stump Grinding  
Hedges  
Lawn Maintenance  
Turfing  
Strimming  
Garden Fencing  
Chippings delivered

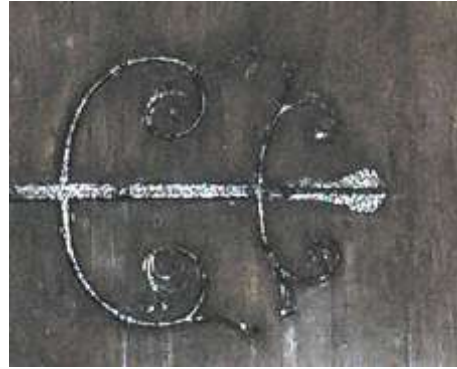
**Tim Moore**

01258 837124

07968 154708

20 years experience  
Free estimates and advice  
Dewlish, Dorchester

## Can you identify where this is in Milborne?



Send your answer to  
msa.reporter@  
yahoo.co.uk

No prize,  
just a bit of fun.  
Answer in the  
November  
Reporter.

[www.dcmtyres.co.uk](http://www.dcmtyres.co.uk)  
[info@dcmtyres.co.uk](mailto:info@dcmtyres.co.uk)

**dcm tyres**  
Wessex Ltd

BATTERIES ALIGNMENT TYRES



High Performance - 4 X 4 - Car - Van  
Your Local Independent Tyre Dealer  
Best Price & Service in Dorset

Next to Homebase

**01258 488667**



**Firestone**

**GOODYEAR**

**BFGoodrich**

**PIRELLI**



**DUNLOP**

**YOKOHAMA**

**BRIDGESTONE**

**Economy**

DCM Tyres (Wessex) Ltd, Bournemouth Rd, Blandford St.Mary, Dorset,DT11 9LW



## Will Writing and Estate Planning

For *solutions* to all your estate planning needs:

- ✓ Single and Mirror Wills
- ✓ Planning for Long Term Care
- ✓ Inheritance Tax mitigation
- ✓ Lasting Powers of Attorney
- ✓ Estate Administration (Probate)
- ✓ Executor and Trustee services
- ✓ Pre-paid Funeral Plans
- ✓ Secure Storage of Documents

Call me now to arrange a  
*free consultation*  
in your home or at work  
to discuss your requirements.

**Michael Moorsom**

Parkwood, Milton Abbas, Blandford Forum, DT11 0AZ  
Telephone: 01258 440480 Mobile: 07730 986155  
E: michael.moorsom@collectivelegalsolutions.co.uk

[www.collectivelegalsolutions.co.uk](http://www.collectivelegalsolutions.co.uk)

## ABBEY SWIMMING CLUB

The Club is based at Milton Abbey School,  
Milton Abbas, which has a  
25 metre indoor swimming pool.

Membership is open to anyone. Members range in age from less than a year to over 80. This is a social and friendly club. Join us and keep fit.

The pool is hired for 4 sessions a week. Lifeguards supervise all sessions. RLSS National Lifeguard and Bronze Medallion courses are available as well as swimming lessons for adults and children.

### Annual Membership

Adults £80. Senior Citizens £60. Juniors (17 and under) £28 as part of a family, £45 individual.

Children (3 and under as part of a family) free.

### Club Sessions

Tuesdays: 7.00 pm – 9.00 pm  
Fridays: 7.30 pm – 8.30 pm  
Saturdays: 10.00 am – 12.00 noon  
Sundays: 8.00 am – 9.00 am

Come to the pool during any club session for a free swim and pick up an Application Form or contact Robert (01258 880192) or Pat (01258 880601).



SPORTS pre season has been encouraging with two matches having been played on the artificial surfaces of Thomas Hardy School and Redlands respectively and resulting in an initial 2-2 draw against Poundbury Sports followed by a resounding 9-2 defeat of promoted Wyke Social. However, the best result to date in the third of their pre season friendlies has been the 2-1 defeat of Blandford Reserves who compete two leagues higher. The score could have been a lot higher if Milborne had not been so profligate in front of goal combined with the fact that manager Paul Hammond made several changes in the second half. The evergreen Paul Aston scored the first with a superb drive into the corner from twenty five yards out and the second came from a penalty coolly slotted home by Sanchez Baker. Mark 'Lambo' Lambert was having an impressive performance at the heart of the back line ably backed up by the consistent Carl Tewkesbury whilst Matt Williams was commanding in midfield, together with a resurgent Carl McClements. Milborne's renowned passing game was again a feature of what was an excellent outing played out on what was a magnificent surface.

With new goalkeepers also having been signed Hammond looks to have all the pieces of the jigsaw fitting well for what should be an exciting season at Lane End. There will also be a reserve side competing again which should mean the possibility of locals being able to watch a live game every week throughout the season without having to contribute to Sky Sports!

Finally, Milborne will again have a youth team, this season at Under 16's level who will compete on Sundays as well as Mini 'Soccer' team through the Youth Academy run by the very capable and well respected Bob Mowlem. In just one year, Bob has gone from a clean sheet to having about fifty young players registered between the ages of six and eleven. The hope is to create another pitch at Lane End and any helpers in this respect or anyone who has an interest in football will be made welcome, whether at junior or senior level.

## Dorset League Two

### Milborne Sports 2 Balti House 0

IN their opening match of the season Milborne were pitted against a strong Balti outfit and for the first frenetic twenty eight minutes the game was fairly even, with Milborne's passing game contrasting with Balti's more direct style. The Laneenders went ahead when the impressive Steve Lambert crossed to see debutant Ollie Stanton's shot deflected on to the post to give Carl McClements the opportunity to thrash the ball in to the top corner of the net from about eight yards out. A couple of minutes later, Balti looked certain to score until Steve Lambert's last ditch expertly timed challenge prevented the industrious Balti House from equalising. The back four of the consistent Carl Tewkesbury, Ross Heaton and the Lambert brothers were equal to any pressure from Balti and the break came with the Laneenders retaining their slender lead.

The second period saw Sports playing some fine entertaining football with Stanton having a great opportunity to extend the lead before the Balti keeper made a point blank save. The visitors replied with a fine attack on the left resulting in a shot that hammered against the inside of the goal post before being cleared. Milborne were not to be denied however, and with the evergreen Paul Aston and McClements a force to be reckoned with in the centre of the park, another home goal looked likely and so it was to be. After Matty Williams had made yet another winning challenge Cris Pavey showed some sumptuous skills before finding Ross Heaton who delivered a perfectly weighted pass in to the path of Ollie Stanton who opened his

account for the club conclusively beating the advancing custodian from the edge of the penalty area to make the final score two nil. This was an excellent team performance by Milborne with new signings, keeper Nick Gregg, 'Jammer' Aldom, Dom Gaillard and Stanton all providing fine supporting contributions, and hopefully this result will be a good omen for the following season.

## Dorset League Five

### Poundbury Sports 1 Milborne Sports Res 1

Milborne came away from this fixture feeling they should have gained more than one point but profligate finishing combined with injuries conspired to ensure this was not the case. Despite going one nil down to a first half penalty, Sports created some great opportunities to equalise. Front runner Charlie Eccleson was guilty of missing a couple of these but made up for this by opening his account for the season. A succession of injuries meant Milborne played much of the second half with ten men but they battled gamely against what was a zealous Poundbury outfit. Young debutant keeper Chris Stones made some good saves to keep the score level whilst new signing, experienced James Connelly, also showed a sure touch and a steady head. Despite only gaining a point, Sports did show signs of some good football and hopefully they can build on this in the coming season.

## Milborne St. Andrew Adults Table Tennis Club

THE club was formed just over three years ago and has a reliable core membership of men and women. We play on Monday evenings from 7.00pm to 9.00pm at the Sports Pavilion in Lane End. It is for adults who want to enjoy playing in a friendly environment, with a nice balance between playing well and having fun - there is even a tea break during the session. We have two tables allowing eight players to play at any one time and we all mix and match to play with and against each other in friendly rivalry.

If you have played table tennis before and would like to spend a couple of hours with people who enjoy the exercise and a "good laugh", please come along and have some fun yourself.

Sandra Shannon 01258 837253 or Pauline Pitfield 01258 839123 would love to hear from you.

We look forward to seeing some new faces.

*Pauline Pitfield*

## Milton Abbas Sports Club – News

**AGM** – The AGM is to be held on Friday 14th October at 7.00pm in the Pavilion at the sports ground. All members are invited to attend.. Anyone who wishes to join the committee or would like to help in any way would be very welcome to make themselves known.. Nominations to the committee or offers of help can be made in advance to the Club Secretary, Maria Timperley metimperley@btinternet.com (01258 880895) or on the night at the AGM.

**Cricket** – With effect from Thursday 6th October cricket training for juniors and seniors will change to **THURSDAY** night and will continue in the Rec Hall at Milton Abbey School through the autumn and winter. Juniors 6.45-7.30pm and Seniors 7.30-8.30pm. Further details from Colin Chastey col.argyle@tiscali.co.uk or 01258 837934.

**Badminton** – Commencing on Friday 7th October in the Rec Hall at Milton Abbey School 6.45-8.30pm. Contact Anita Handley for more details anita.handley@btconnect.com or 01258 882118

**SWIMFIT** – Lane swimming for those that want to get fitter or faster or just to gain more confidence in the water. This is not an exercise class but a great opportunity for anyone who can swim at least two lengths to follow a programme devised by swimming experts the ASA under the watchful eye of qualified coaches on pool side. metimperley@btinternet.com (01258 880895) for more details.



# The Hambro Arms

Milton Abbas, Dorset

## New Autumn Menu Available

Our motto remains: "Quality Food at an affordable price"  
Along with traditional pub classics and a specials board that changes daily.  
Whether it is a lunchtime snack or that special meal, we have the menu to suit.

### Starters

Chef's soup of the day served with a warm crusty baguette (v)  
Smoked salmon and king prawns on a bed of baby mixed leaves and a dill and lime vinaigrette  
Homemade chicken liver pate served with warm wholemeal toast  
Cheesy Nachos with jalapeño peppers, sour cream and tomato salsa (v)  
Duck spring rolls served with a plum sauce  
Mushrooms in a creamy blue vinney sauce on a toasted baguette (v)

### From Our Grill

Rump Steak cooked how you like it and served with mushrooms, tomato, onion rings and chips. Add a peppercorn or blue vinney sauce  
Full Rack of BBQ Ribs served with chips and salad  
Peppered Venison Steak in a raspberry sauce served with new potatoes and seasonal vegetables

### Traditional Pub Classics

Hambro pie of the week served with creamy mashed potatoes and seasonal vegetables or chips and peas  
Beer battered fish and chips, served with peas and homemade tartare sauce  
Homemade beef or vegetarian lasagne with garlic bread and salad (v)  
Five bean chilli served with rice and sour cream (v)  
Breaded whole tail scampi served with chips, salad garnish and homemade tartare sauce  
Home-cooked gammon ham served with two eggs, chips and peas  
Half roasted chicken served with chips and salad  
Mato of Blandford wild boar and apple faggots served with creamy mashed potatoes and garden peas

### Desserts

Local cheese platter  
A selection of ice creams  
For our other homemade desserts please see our board or ask any member of staff

We offer a traditional roast lunch every Sunday

### \*\*\*Friday Fish and Chip Supper and Take-Away\*\*\*

We continue to offer fresh fish and chips to take away on Friday between 6.00-7.00pm. We are also offering the opportunity to come and eat in at The Hambro. From 6.00 to 7.00pm every Friday you can enjoy fresh fish, chips and peas for only £6.90 (normal price £10.90) or two Sausages in batter, chips and peas for only £5.80.

### Christmas at The Hambro

It is never too early to start making plans for the festive season. Whether it is Christmas Day itself, a Christmas party or a smaller lunchtime gathering, we have menus to suit every occasion. Our Christmas Day menu commences with a champagne cocktail and is four courses followed by coffee and mince pies.

*Eat, drink and sleep blissfully*

*The Hambro Arms, Milton Abbas, Blandford Forum, Dorset DT11 0BP*

*Tel. 01258 880233 [www.hambroarms.com](http://www.hambroarms.com)*