

# Reporter

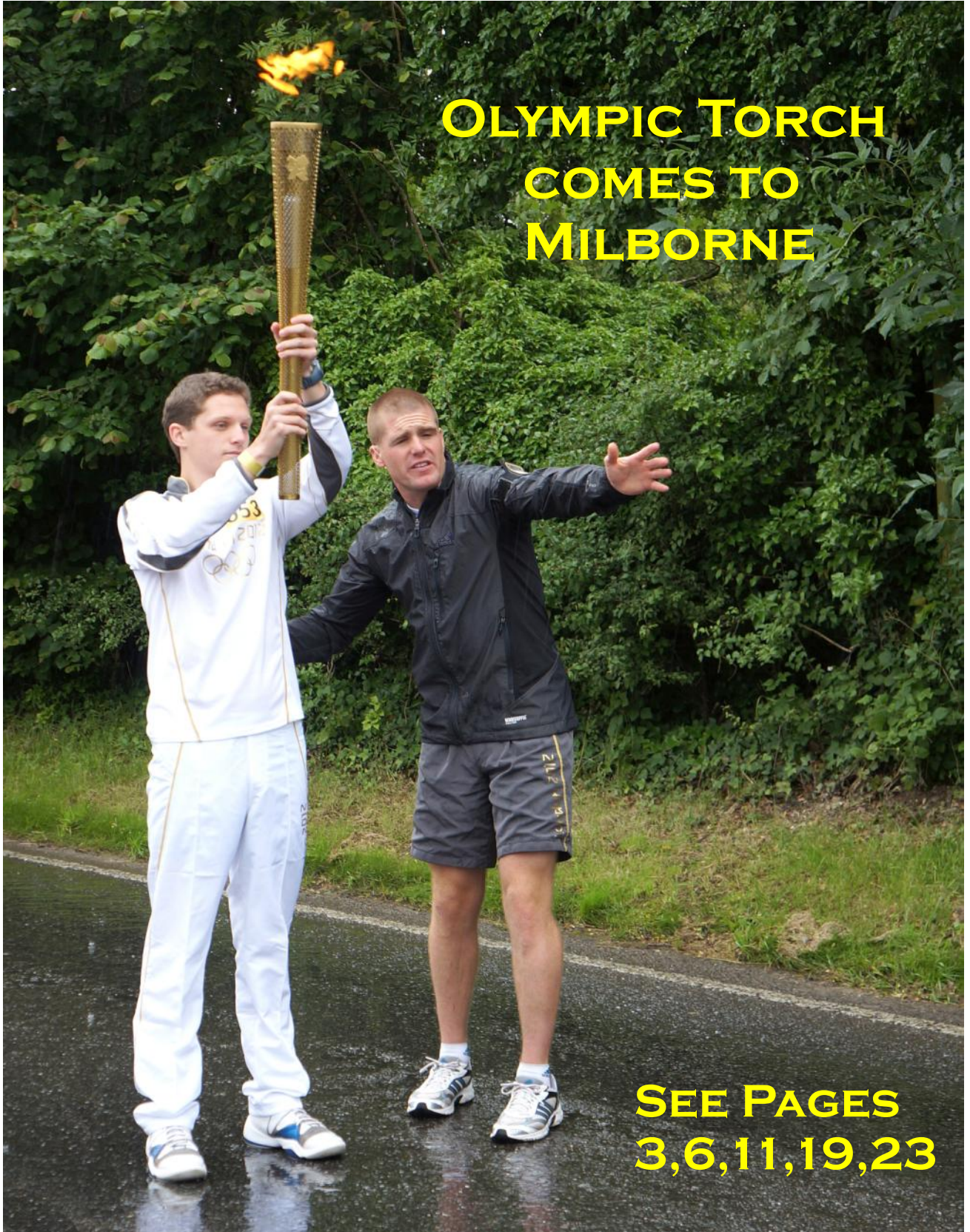
News and Views from around the area

Volume 4 Issue 8 August/September 2012

[www.milbornestandrew.org.uk/reporter](http://www.milbornestandrew.org.uk/reporter)



Milborne St. Andrew



**OLYMPIC TORCH  
COMES TO  
MILBORNE**

**SEE PAGES  
3,6,11,19,23**

## Milborne St. Andrew Gardening Club



MEMBERS had a great day out at the Abbey House Gardens in Malmesbury at the end of June and were extremely lucky to have had a sunny day. The gardens were spectacular, set against the backdrop of the abbey, with hundreds of beautiful roses and other flowers, a riverside walk, unusual statues, topiary, herb gardens and much more. They are well worth a visit and I am sure many of us will return.



Our next meeting is our social event, and will be on Thursday 30th August (please note, the fifth Thursday of the month and not the usual fourth). We are going to try again to have a stroll round a few members' gardens, arriving at our final destination for a Bring and Share Supper. If we have a downpour (as happened last year – and we are not completely hopeful this time), we will just have the planned supper together. Full details are being sent to members.

We are organising a visit to Rob Hendley's Dahlia Nursery during September, sharing cars. At the time of writing the date has not been fixed, so please contact our Chairman, Sally, or myself, if you would like to come along.

At our meeting on 27th September the Speaker will be Jonathan Garratt, who will be talking about the History of Flower Pot Design. It sounds a bit quirky, but should be really interesting, as Jonathan is one of Britain's foremost garden artists and has his own pottery at Cranborne.

So, lots of things to put in your diary. Please come along and bring guests if you wish.  
*Linda Harris, Secretary*

The views expressed in this magazine are not necessarily those of the **Reporter** team.

### Advertise with the Milborne St Andrew **Reporter**

Distributed to over 500 homes 11 times each year

Full page £200.00 p.a. / £40.00 per issue

Half page £140.00 p.a. / £25.00 per issue

Quarter page £75.00 p.a. / £13.00 per issue

Eighth page £50.00 p.a. / £7.00 per issue

Back page £300.00 per annum

Community events at the Village Hall will be advertised free of charge

Other community events at half the above rates for half page or less

Advertising copy **MUST** be received by the 14th of the month

[msa.reporter@yahoo.co.uk](mailto:msa.reporter@yahoo.co.uk)

Advertisers will also be listed in the Business Directory at [www.milbornestandrew.org.uk](http://www.milbornestandrew.org.uk)

## August Village Lunch

To be held at the Village Hall on  
SATURDAY 25th August from 12.15pm

Wine or Fruit Juice/Main Course/Pudding  
Coffee or Tea/Mints  
£6.50 per head

Tickets available from Josie Wright 839090  
or ask any of the committee

AND

## September Village Lunch

To be held at the Village Hall on  
SATURDAY 29th September from 12.15pm

Tickets available from the Computer Drop-In Centre  
at the Village Hall from Friday 7th September  
(10.00am to 12 noon)

or call Josie Wright anytime for more information  
or to reserve tickets on 839090

Vegetarian meals available to order

Please note: These and all lunches are open to anyone

## Village Hall Social Evening for All In Aid of the Village Hall

The Village hall committee would like to host an evening for all villagers, your friends and family on Saturday 6th October 2012 and we would like your opinion on what event would interest you more

A Race Night with either horses or pigs

(Races shown on the village hall large projector screen and you have the opportunity to bet on the winner with the chance to win on the tote style pay out)

Or

A 70's and 80's disco with optional fancy dress

Or

Any other ideas

The village hall is an integral part of the community and we appreciate that many people are unable to commit to regular activities however we feel that it is important that the whole village enjoy the use of the village hall and its fantastic facilities and we hope to achieve this by having this social event for all. Any comments or feedback would be most appreciated please contact Amy on 01258 839110 or e-mail; [leetanswell76@gmail.com](mailto:leetanswell76@gmail.com)

*We look forward to hearing from you.*

### Your **Reporter** Team

Janet Allen, Susan Cawley, Carole Fornachon,  
Sue Gould, Heather V. Hogg,  
David Payne, Ed Richards  
and Josie Wright

Advertising and General Enquiries: 01258 837700

News and Features: Sue Gould 01258 837575

Finance and Photography: Heather V. Hogg 01258 837392

Copy for the next issue **MUST** be received by the 14th of the month

Enquiries and copy to: [msa.reporter@yahoo.co.uk](mailto:msa.reporter@yahoo.co.uk)

E-copy as .doc or .pub files, pictures as .jpg files please  
Paper copy to Sue Gould at 28 Stileham Bank DT11 0LE

# We've Never Seen So Many People in Milborne St. Andrew

THE day started off well with high hopes of fine weather, the forecast was for rain after one o'clock but who can trust that?

We arrived early, about 11.30am; not many spectators about, the organisers had roped off an area for wheelchair and other disabled people near the junction with The Causeway. The view was great and then it started to rain but we're British and we put up the umbrella and waited for the Relay to start.

People arrived slowly at first, but as the allotted time came closer more and more arrived. School children of all ages from local and distant villages trooped along to the various vantage points along the main A354, from the factory to the bottom of Dorchester Hill by The Royal Oak. The limited pavement overflowed into the roadway but this was controlled by the stewards in their bright fluorescent waistcoats. Still the rain kept on falling but the musical group in The Square entertained everyone waiting.

Hilary Cox, our County Councillor, and Jane Somper, who was a steward for the day, joined us along with many friends and neighbours eagerly awaiting the Torch. Motorists passing through the village were cheered as though they were part of the day's events.

The first indication that something was happening was the arrival of police motorcycle outriders. These stopped in the road and encouraged the crowd to wave and cheer. One policeman was invited to do a 'wheelie' but instead offered his motorbike to the heckler to have a go. This needless to say was not taken up.

Next the sponsors' vehicles; some people got freebies. We got a bottle of Coke, others plastic tubes with the sponsor's name, trays and streamers from the Lloyds lorry, no money, pity.

We heard the Torch was running late, but no, it appeared with Ben Hanger holding it aloft. It was good to know one of the Torchbearers. Saw a good piece on BBC South Today later in the

evening. It showed members of the local community including Margo Kirk and Ron Ward welcoming Ben to a cream tea in the village hall recently.

The crowd was by this time huge and when Ben passed us he and the rest of the Torch Relay party were lost as people rushed to see the changeover. Neither Mary nor I saw this because of the crowds and the vehicles in the way, but we had a great time. It will be something to remember and never to be seen again by us in Milborne St. Andrew. The organisers are to be congratulated for a smooth operation. A long time coming but worth it.

*Michael and Mary Hopper*

## Ben's proudest moment

I WOULD like to thank everyone that braved the weather and came to watch the torch come through the village. It was the proudest moment of my life and I was overwhelmed by the support from the crowd that created such an electric atmosphere. I would also like to say a special thank you to Margaret Kirk and the Wednesday Club for giving me such a warm welcome in the months before the torch arrived, it really did make me feel like part of the community. I am still struggling to find the words to describe the emotions from the day but it is something I will never forget and I hope an experience that you also never forget. Milborne St. Andrew will always be a special place to me and I hope I can visit many more times and be involved with the community.

*Ben Hanger*



Front cover photograph by Peter Fornachon  
Photograph below by Official Parish Council Photographer



# **P.N. GRAY**

## **ELECTRICAL CONTRACTORS**

**AGRICULTURAL - DOMESTIC - INDUSTRIAL**

**ESTABLISHED OVER 50 YEARS**

ALL ELECTRICAL WORK UNDERTAKEN FROM  
INSTALLATIONS TO MINOR WORKS

INSPECTION AND TESTING – REWIRING AND  
MAINTENANCE

FULLY ENROLLED WITH THE BRITISH STANDARDS  
INSTITUTE FOR SELF CERTIFICATION AND  
BUILDING REGULATION PART “P”

GIVE US A CALL FOR A FREE NO OBLIGATION  
QUOTATION OR JUST SOME FRIENDLY ADVICE

TELEPHONE: 01258-837354/01258-837270  
MOBILE : 07774-838851



E-MAIL : [sharongray@talktalk.net](mailto:sharongray@talktalk.net)

## **May Fayre 2012**

THE sums have been done, amounts added up and we are pleased to announce increased takings at the 2012 May Fayre. This year we collected £1,255 and have been able to pass on £104 each to the ten local organisations who helped make the event such a success. They are the Allotment Society, the Friday Drop-In, the Food and Wine Society, the Gardening Club, the Parochial Church Council, the Scouts, the Sports Club, the Village Hall, the Wednesday Club and the Women's Institute. We should like to thank everyone who helped with the planning and on the day, especially Ed and Caroline Richards for the Olympian Dog Show, and we are looking forward to an even bigger and more successful event in 2014. If you have any suggestions for the next Fayre or want to get involved in any way (planning has already started!), please contact Margo Kirk ([margoross601@btinternet.com](mailto:margoross601@btinternet.com)), Mike Mullett (839076) or Elizabeth Humphrey ([elhumphrey@hotmail.com](mailto:elhumphrey@hotmail.com)).

**Old Washing Machines, Cookers,  
anything metal  
removed free  
of charge**

**REGISTERED CARRIER**



**Please call: 01258 837100**

## **Sohani Gonzalez**

**B.A., M.C.H., R.S.Hom**

Registered Homeopathic Practitioner with over  
28 years experience in Sussex, London and Dorset

- Nutritional and Dietary advice
- Allergy Testing

Homeopathic medicine is over 200 years old. It is popular world-wide because of its effectiveness, safety and its ability to treat all kinds of physical and emotional problems.



Consultations available in the Blandford Forum  
and Dorchester areas

**Please call for an initial appointment**

**01258 839043**

[www.sohani-homeopathy.com](http://www.sohani-homeopathy.com)

*Susie Edwards*



*Floral Designer*

\* Cut flowers, bouquets and arrangements  
for every occasion \*

- \* Specialist in Wedding flowers \*
- \* Bespoke funeral tributes \*

01258 837933

07860 546468

Major cards accepted –  
48 hrs. notice appreciated

**I can send flowers across the UK**

[susie@susie-edwards.co.uk](mailto:susie@susie-edwards.co.uk)  
[www.susie-edwards.co.uk](http://www.susie-edwards.co.uk)

*Frogmore Cottage, Milton Road*



*Milborne St. Andrew*

**Your local florist**

## Milborne St. Andrew Village Hall Annual Accounts 2011–2012

The accounts for the Village Hall have been audited, agreed at the AGM in April and submitted to the Charity Commission. After several years of investment in the Hall, during which balances (funds held) were used to support grant-funded initiatives, we have now reached the agreed level of reserves (rainy-day money) of approximately six months' spend. I am pleased to report, therefore, that the Hall made a surplus of £785, although a more realistic figure is £1,680 as our new energy provider over-collected in the last few months of the year. Rental income increased by £1,300, covering 95% of our running expenses, with the balance being met by other events and fund raising. Expenditure was higher than last year although we were pleased with a marked reduction in the cost of repairs and maintenance. We received grants totalling £8,500 and spent these on completion of the multi-use games area, grounds maintenance and the screen. We also purchased new projection equipment, which was covered by grants received in the current year. The summary accounts are given below. If you have any queries about the accounts please contact the treasurer, Elizabeth Humphrey on 839263. If you have any other queries about the Village Hall, please contact the chair, Paul Tasker, on 837590 or the secretary, Ed Frost, on 837921.

### MILBORNE ST ANDREW VILLAGE HALL

Registered Charity No. 301153

#### Statement of Assets 2011–2012

	£		£
Building and land at cost	8,955	Building and land at cost	8,955
Cash in hand	87	Cash in hand	160
Nationwide building society	1,586	Nationwide building society	1,586
Santander current a/c	2,817	Santander current a/c	3,529
<b>Total assets @ 31.01.11</b>	<b>13,445</b>	<b>Total assets @ 31.01.12</b>	<b><u>14,230</u></b>
Less excess of income	<u>785</u>		
	<b><u>14,230</u></b>		

Independently verified as a true and fair record of the income and expenditure of Milborne St. Andrew Village Hall for the year ended 31 January 2012 and their financial position at that date.

John Moulson  
17 March 2012

## Faith in God's World

DO you want to learn more about your faith? Would you like to be more confident in talking to others about what you believe? How does your faith relate to daily life in the 21st century? If you are interested in the answers to these questions and others, why not consider the Faith in God's World course which will be starting in October. The first term will look at Faith in Christ – beginning with the evidence for Jesus in the Gospels and history, and then moving on to look at what it means to call Jesus "Christ" (Messiah), before addressing Christ in our world today and what it means to know Christ. The second term concentrates on the scientific world and how faith and science relate to each other. What is a Christian response to Richard Dawkins's challenges to faith? Term 3 brings faith into our life at work and in retirement. How do I live out what I believe?

If the above interests you, then why not come and learn more? Course materials costs £15 per term, and we will meet over a bring-and-share lunch, each Wednesday from 12.30 to 2.30pm, beginning on 3rd October in Puddletown church room. Sarah Hillman has leaflets available with more details.

Sarah Hillman

## Wet June in Milborne St. Andrew

THE total June rainfall in Milborne was 168.1mm which was 296% of the June average and was the wettest June I have recorded in 41 years. There were only six days during the month when I did not record any rain at all. The wettest day during the month was the 7th with 36.8mm of rain. This was accompanied by very strong winds which reached 82 mph at the Needles. The previous wettest June was in 1991 with 143.2mm of rain. The average temperature for the month was 14.48°C which was more than 2°C lower than normal.

The total rainfall for this year so far to the end of June was 99.2mm more than normal and the July rainfall at the time of writing is already at record levels. The drought of last winter now seems a distant memory!

It was a rainy summer over 100 years ago when Alice Meynell wrote;

"There's much afoot in heaven and earth this year;  
The winds hunt up the sun, hunt up the moon,  
Trouble the dubious dawn, hasten the drear  
Height of a threatening noon."

Pluvius

## Little England building 'sight'

### Floodwater out . . .



Will they be sold with a warning to keep a raft in the cellar?

Send your stories and pictures to the Reporter at [msa.reporter@yahoo.com](mailto:msa.reporter@yahoo.com) or give to a member of the Reporter team. See the Reporter each month in colour on [www.milbornestandrew.org.uk/Reporter/index](http://www.milbornestandrew.org.uk/Reporter/index)



# Milborne St. Andrew First School



Learning together, playing together;  
all for one, one for all

## School News

It has been a very busy run down to the end of the school year. Our year 4 children have enjoyed their residential stay at Carey, showing their resilience to our unusually wet summer. Whilst some activities had to be modified to take account of the conditions, the pictures still show what great fun they had. In preparation for their transfer



to the middle school in September they have spent a day at St. Mary's and have enjoyed a science afternoon there. They have also had the benefit this year of learning to play a brass instrument and showed off their talents at a concert for parents earlier this term. In the last week of term they will be going out to follow the course of the river locally from its source to the sea in Wareham, where they will enjoy a boat trip.

Luckily our annual sports morning was scheduled for a day without the rain and the children and parents enjoyed the morning of activities. The sporting theme has been key this term whilst we look forward to the Olympics. The children have been enjoying Olympic based activities in school and we were joined by Cheselbourne School to watch the Torch procession through the village. We were fortunate to have many parent volunteers to help



supervise the children throughout the day and we all enjoyed a Bowlympic performance by Bowjangles in the village hall, for which we are very grateful to the organisers. The day was such a great example of traditional British spirit in poor weather conditions, but also reflected how well the village community works together and for us reinforced how well our school community works together. We would like to give a special thank you to the staff at The Royal



Oak, the village stewards and our local police officers who all helped us safely enjoy the event. It's not only in school based events that we see that community support. Martin Curtis, chair of our parent forum, asked that thanks be passed on from his family for all the



support shown locally following the arrival of a new baby in the family. In school we will look forward to welcoming her to school in a few years time.

Whilst our views of the torch were brief as it passed through the village, we were able to get a closer look when runner Ben Hanger



brought it to school for everyone to see. This was Ben's second visit to school this month as prior to the run he had visited to explain why he was running and what he had to do. We are thankful for all of the time he has given to the school.

Our Friends of School supporters have once again been working hard to provide events for us. Unfortunately it became necessary to cancel a couple of outdoor events due to the weather, however they have improvised well. Having arranged for poet Valerie Bloom to spend the day in school with the children, they also provided an indoor picnic for children and staff to enjoy.

Our art project pictures for August and September are shown



below. Our Owls class produced the board for August, showing the scene of Weymouth as it will be during the sailing events this summer. September comes courtesy of Hazelnuts After School Club, who provide extended school provision from their base in Puddletown. Further details of their activities including holiday clubs can be found through the school office.

In September it will be time to register children who will start school the following year. Please see below for details of our open sessions inviting new parents to tour the school and meet the headteacher.

## Milborne St. Andrew First School

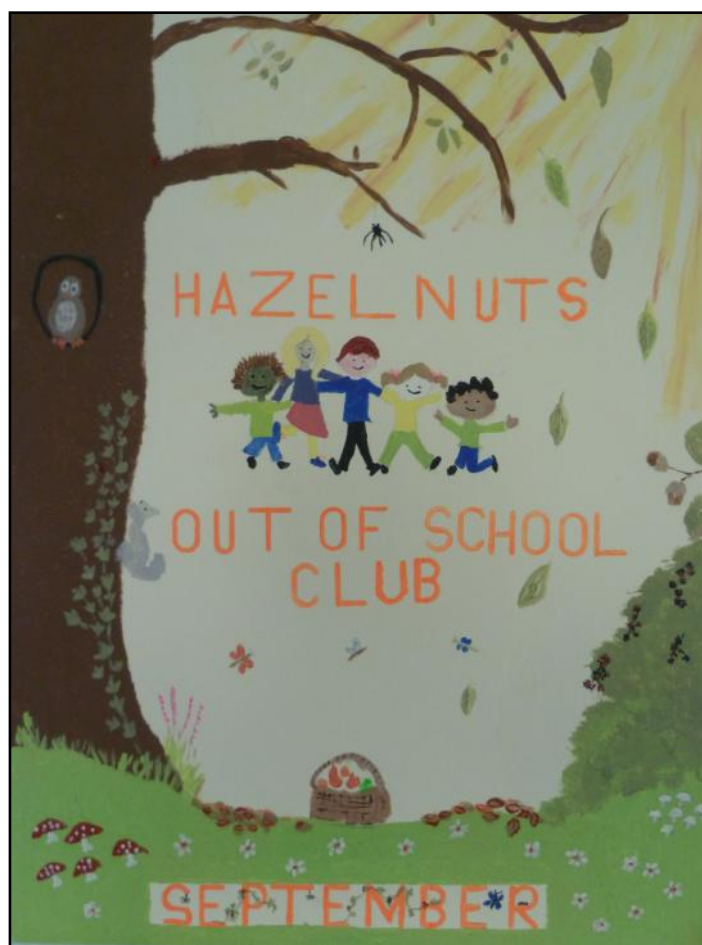
If your child is due to start school in September 2013, please join us at one of our open sessions below.

Thursday 4th October, 9.15–10.00am

Thursday 4th October, 2.00–2.45pm

You will have an opportunity to tour the school and meet with headteacher Mr McDermott.

Please contact the school office for any further details or to make alternative arrangements.



## CONTACTS

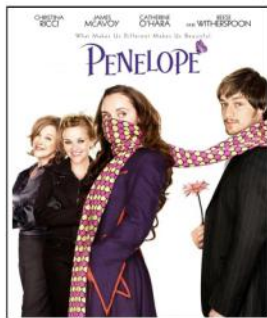
If you require any information about the school, including admission details or would like to arrange a visit please contact Mrs Pugh in the school office

**Headteacher:** Mr Neil McDermott **Secretary, School Office:** Mrs Helen Pugh

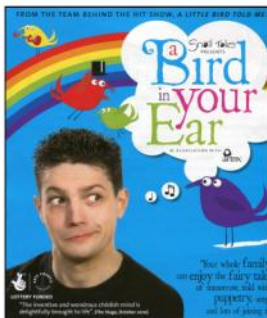
**Chair of Governors:** Mrs Jessica Doodles **FOS Chairman:** Mrs Kate Connolly

e-mail: [office@milborne.dorset.sch.uk](mailto:office@milborne.dorset.sch.uk) website: [www.milborne.dorset.sch.uk](http://www.milborne.dorset.sch.uk) Tel: (01258) 837362 Fax: (01258) 837170

# August and September at the Village Hall



**Milborne Movie Matinee**  
Tuesday 31st July at 2.30pm



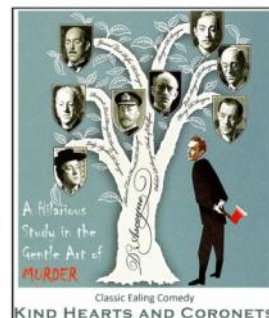
**Artsreach** (for children 3+)  
Thursday 2nd August  
10.30am - 11.30am



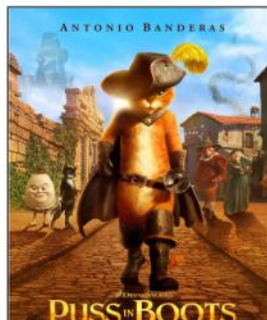
**Artsreach** (for children 6-10y)  
Wednesday 8th August  
10.30am to 4.00pm



**Artsreach** (for children 6+)  
Wednesday 15th August  
10.30am, show at 3.45pm



**Afternoon tea and a movie**  
Wed 22nd August at 2.30pm



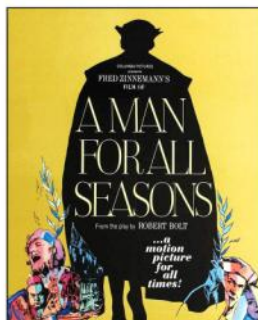
**Milborne Movie Matinee**  
Thursday 30th Aug at 2.30pm



**Milborne Movie**  
Friday 31st Aug at 7.30pm



**Artsreach**  
practical holiday workshops  
for children  
Various ticket prices



**Milborne Movie**  
Wed 19th Sept at 7.30pm



**Milborne Movie**  
Friday 28th Sept at 7.30pm

Look out for posters and flyers nearer the events

## Hustings Electrical Ltd

Est 1980

### Now fitting solar photovoltaic energy

Would you like to produce your own energy?

Help the planet? And get **PAID!**

Call today for introductory prices and more information, fully MCS registered and NICEIC.

All other types of electrical work carried out including industrial, domestic, agricultural, commercial, test and inspection and many more.

Visit [www.hustingselectrical.co.uk](http://www.hustingselectrical.co.uk)

or call

**01258 837385**

**07966 403965**





## SUMMER SCHEDULE



### AUGUST

Friday 10th August

City of Bath

£7.50 return

Saturday 18th August

Alum Chine Beach, Bournemouth

£5.00 return

Wednesday 29th August

Monkey World

Various prices

Please ring Deanna/Ron

Pick-up from 9.00am dep at 4.30pm

Bus2Go cannot be held responsible  
for any loss of goods or personal injury



## End of another year

IN the hectic run up to the end of school year Ladybirds have been busy preparing to watch the torch relay and learning about different sports. The wet weather did not deter our children from standing waving their flags and holding the torches they had made. The following day – Friday 13th! – we anticipated another soaking as we set out for a day in the woods with Whitehorse Training. Luckily the weather was good and we remained dry – except for those who jumped in all the puddles! The children searched for hidden animals, built dens (where they ate their lunch), identified objects that should not be in the woods, completed nature puzzles after finding the pieces, then going on a real bug hunt before leaving for home. Thank you to Rob and his team from tired and happy children and adults.



This month we have had visits from the head of Milborne School Mr McDermott, new Reception teacher Miss Whitman, Jenny Balcon to tell us about the torch, a duckling and a kitten. Also for a bit of fun we demonstrated what happens when you put Mentos into a bottle of Diet Coke. Children were at a safe distance only adults were sprayed and children were told 'don't try this at home!'

We wish all the best for the future to the children moving on to First School and look forward to welcoming returning children and new starters in September (first day of term Tuesday 4th September).  
*Liz Dyer*



## Milborne Ladybirds Playgroup

Registered Charity no. 1087441

We are a friendly community preschool with highly qualified, enthusiastic staff who help children to achieve their potential through fun activities

Opening times;

Early birds 8.30 to 9.00 --- Sessions 9.00 to 12.00 --- Lunch Club 12.00 to 1.00



Contact Details:

Jayne Hamilton (Secretary) 01258 837260

Liz Dyer (Playgroup Manager) 01258 839117

[www.milborneladybirds.org.uk](http://www.milborneladybirds.org.uk)

Ofsted Registered no. 217717



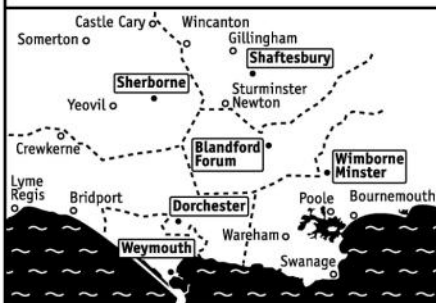
Blandford · Dorchester · Shaftesbury · Sherborne · Weymouth · Wimborne



**Dorsetlettings**  
.co.uk

**Dorset's leading letting agent**

- ▶ specialists in residential lettings since 1984
- ▶ reputation built on reliability and efficiency
- ▶ experienced, ARLA trained and qualified staff
- ▶ professional advice, friendly service



24 Market Place, Blandford, DT11 7EB

blandford@dorsetlettings.co.uk 01258 452444

**ROY MORBY**  
Painter, Decorator



57 Hopsfield  
Milborne St Andrew  
Blandford Forum  
Dorset DT11 0LO

Tel: 01258 837125

## Individual Yoga Classes

Yoga helps us to live better and more happily at every level of our being, physically, mentally, emotionally.  
And when taught in the traditional way, individually, it is much more powerful.

*I have been teaching yoga for over forty years. I am a qualified yoga teacher, teacher trainer and yoga therapist.*

To find out more, ring or email me

**Sarah Ryan**, KHYF teacher and trainer,  
BWY dip., CNHC reg.

Tel: 01258 839230

Email: saryan6630@aol.com

# MMSA CARS LTD

*Fine Used Car Sales in the Heart of Dorset*

*We Sell Cars • We Buy Cars • We Will Find You The Car You Want*

We are based at The Garage, Dorchester Hill, Milborne St. Andrew, DT11 0JG

For details of our current stock, to arrange a test drive or just to ask our advice call **Jon Riddle on 07557 104150 or 01258 837030.**

**www.MSAcars.co.uk**

## The Olympic Torch – A yellow T-shirts point of view

AFTER putting my name on a piece of paper months ago I had an email last week from Jenny. An Olympic meeting in the pub – what a good place to talk about Olympics! A group of about 14 of us gathered, where we were “filled in” on our requirements as Marshalls, or Stewards or whatever we were called! It included the obligatory Health and Safety list (from the Parish Council) and a risk assessment,

*Q:* What to do if we find a hazard in our patch. *A:* Call Jenny.

*Q:* What do we do if we have a problem. *A:* Call Jenny.

*Q:* What do we do if someone feels off-colour. *A:* Assess, response being anything from 999 to shelter in village hall to – yes you guessed it – Call Jenny!

Flippancy aside, we did make real decisions on how to respond.

We met at 8.30am to organise ourselves. Jenny Balcon did a tremendous job of the organising and had begged, borrowed or acquired a quantity of bunting for the day, and yellow T-shirts – we weren't marshalls or stewards, we were “Ambassadors”! I know 'cos it said so on the back of my T-shirt! So we all disappeared to different bits of the village – in the sunshine – and posted, tied, twisted and plonked car park signs and bunting around the centre of the village. Rumour went round that the torch bearers were meeting up at the factory, we arranged to meet there. It was amazing, we were able to hold the torch, take loads of photos, meet all the runners up to Kingston Maurward and chat. It made the whole thing a lot more personal, we now knew them, they weren't just bodies, they were characters. Instead of being 62yrs old I felt like 22!



That is when the first raindrop came, and it came, and it came! First went on the pac-a-mac, with T-shirt pulled over the top, then the waterproof trousers! We stood in our allotted places, had instructions from our local community policeman, Luke, and a bit more from the North Dorset representative, things like, ‘don't let people walk in front of cars!’ and ‘make sure you are watching the crowds, not taking photos!’ So I passed my camera to my family and prepared for the crowds, but I was halfway up the hill – no crowds! They were all amassed at the bottom in the square. All change, the “Ambassadors” hurriedly moved downhill. Actually – it was great for me, I could see the second torch, and the atmosphere was busy and excited. As the water dripped off my nose, my fingers and anything else that stuck out, we cheered the sponsors' vehicles, we cheered the Metropolitan Police bikes, and we cheered a scaffolding lorry that had somehow snuck in – very funny!

What was a horse box coming through for? Ahhh – loads of cameras in the back – I see. And then Ben Hanger – with many people running down the hill with him, his school was there to cheer him on. The “Kiss” of torches happened beyond me, but I was fully occupied trying to stop folks walking all over the road, as the vehicles were all anxious to start moving again.

What a morning – dripping wet, freezing cold, and absolutely shattered but . . . Oh boy – it will never happen again. *Sue Gould*



### Did you identify this?

At the time of publishing nobody had come forward with the answer to this gateway at The Old Rectory in Chapel Street.

Try your luck this month on page 28.

Answer in the October's Reporter.

## Entertainment at the Village Hall in August and September

**Penelope (U)** (Milborne Movie Matinee)

31st July 2012 at 2.30 pm Doors open at 2.00pm. Admission Adults £3.00 and Accompanied Children £2.00.

**'A Little Bird Told Me'** presented by Snail Trail (Artsreach)

2nd August 2012 at 10.30 to 11.30am. Short stories suitable for age 3yrs + Tickets: Adults £5.00, Children £4.00 and Family £15.00.

**Dor-lympics** (Artsreach)

8th August 2012 at 10.30am to 4.00pm. Workshop for children aged 6 years to 10 years. Tickets £10.00.

**'There's No Business Like Show Business'** (Artsreach)

15th August 2012 at 10.30am. Show at 3.45pm. Song and Dance Workshop with Claire Camble Hutchins for 6 years + Tickets £10.00.

**Kind Hearts and Coronets (U)** (Milborne Movie Matinee)

22nd Wednesday August 2012 at 2.30pm Doors open and Tea served from 2.00pm. Admission £3.00.

**Puss in Boots (U)** (Milborne Movie Matinee)

30th August 2012 at 2.30pm. Doors open at 2.00pm. Admission Adults £3.00 and Accompanied Children £2.00.

**The Tempest (PG)** (Milborne Movie)

31st August at 7.30pm. Doors and Bar 7.00pm. Admission £3.00.

**A Man for All Seasons (U)** (Milborne Movie)

19th September at 7.30pm. Doors and Bar 7.00pm. Admission £3.00.

**'Marigold Hotel'** (PG-13) (Milborne Movie)

28th September at 7.30pm. Doors and Bar 7.00pm. Admission £3.00.

If you need any more information on any of the above please contact me on 01258 837371.

*Alice Harrall*

## more\* than a movie at the Village Hall is no more!

THE terms and conditions that apply to our *more\* than a movie* shows have been changed by the licencing authority. This means that the fees we pay out for each film will increase substantially as from the beginning of August and we will no longer be able to afford to provide a free ice cream or soft drink at the performance.

A great selection of Purbeck ices and a range of soft and alcoholic drinks will continue to be available for purchase at the Village Hall and ticket prices will remain unchanged at £3.00 for adults and £2.00 for accompanied children at afternoon matinees. Look at the ads elsewhere in this issue of the *Reporter* to see the great programme of *Milborne Movies* and *Artsreach* activities for adults and children planned for this summer.

*Ed Frost*

All copy for the October Reporter must be received by the  
**14th September**. Please send copy via e-mail to  
msa.reporter@yahoo.co.uk or give to a member of the team.

**Printer, copier, fax?**  
**The place to get it...**



- Inkjet & laser toner cartridges, faxfilm, ribbons, paper & memPods
- Cash-Back on empty cartridges & mobile 'phones



The Rural Business Centre, Winterborne Whitechurch, Blandford, Dorset DT11 9AW

**Call: 01258 880050 or 01258 880034**

e: [cashback@thecartridgefamily.co.uk](mailto:cashback@thecartridgefamily.co.uk)



Member of South Wessex Waste Minimisation Group and committed to Local Agenda 21

# LOGS

**£70.00 per load**

contact

**Mark Revell**

**Milborne St. Andrew**

**837 536**

**Selling a car? Can't face the ...**



## **hassle?**

We buy cars, bikes, campers and vans for cash at a time to suit you. Trading in elsewhere? We can usually offer more ...

**Halcyon Motors**, now based in Milborne St. Andrew, is a small, friendly business and we will happily come to you. Impartial advice comes free!

**Buying?** Visit [www.halcyonmotors.co.uk](http://www.halcyonmotors.co.uk) to see "warts and all" descriptions and photos of our current stock. Warranties with all cars. Part exchange welcome. Call **Don MacLeod** 01258 839152 or 07782 189555 (Mon - Sun, 8.00am - 9.00pm)

**AJV**  
**COMPUTING**

IT Services for the Home & Small Business

Virus and malware removal • E-mail & broadband setup  
PC & Laptop repairs & upgrades • Wireless networking  
Data recovery • Installations • Troubleshooting

*No callout charge • Microsoft certified  
Over 20 yrs experience • Prompt & friendly service*

**Tel: 01929 480529**

**Mobile: 07710 835905**

[www.ajvcomputing.co.uk](http://www.ajvcomputing.co.uk)

**Southfield**  
VETERINARY CENTRE

**Providing First Class Care  
for all your Pets**



**Pet Health Plan Available  
Now Find us on Facebook**

South Walks Dorchester DT1 1DU

Tel: **01305 262913**

[info@southfieldvet.co.uk](mailto:info@southfieldvet.co.uk) [www.southfieldvet.co.uk](http://www.southfieldvet.co.uk)



**24 Hour Emergency  
Service**



## **OLD BARN DENTAL PRACTICE LTD**

Mr John Woodward BDS. (Hons.) U. Lond. LDS RCS

**Modern, cosmetic and  
restorative dentistry  
in a friendly atmosphere**

**Manor Farm Road,  
Bere Regis  
Wareham  
Dorset BH20 7HD**

Telephone: 01929 471023  
email: [oldbarn@tesco.net](mailto:oldbarn@tesco.net)

## LATE SUMMER SCHEDULE



### SEPTEMBER

**Saturday 8th**

**MILKY WAY ADVENTURE PARK**

*See editorial*

**Wednesday 12th**

**DORCHESTER MARKET**

**Pick-up 9am return 1.45pm**

**£5.00 return**

**Saturday 22nd**

**ABBOTSBURY SUB-TROPICAL GARDENS**

**Pick-up 9am return 4pm**

**Wednesday 26th**

**SWANAGE RAILWAY**

**Pick-up 9am return 1.30pm**

**Contacts: Ron 01258839234/Margo 01258 837749**

**Deanna 01258 880559/Don 01258 881719**

**Email: bus2go@btinternet.com**

**Winterborne Stickland**

**and**

**Milborne St Andrew Parish Councils**



**Spectrum**  
signpost

## “Dying for a Drink”

by Ian McCutcheon

On Friday 21st September The Royal Oak in conjunction with The Milborne Players will be hosting a murder mystery evening.

Emma Royde is a wealthy widow whose late husband, Andy, was the victim of a hit-and-run driver.

She has a drink problem, and to make matters worse, she's had an anonymous letter telling her that one of the beneficiaries in her will is going to kill her.

So is it wise of her to invite them all to her home?

The evening will begin at 7.00pm when you will be welcomed and talked through the format of the evening, the cast will then perform act one followed by the serving of the starters.

This will be followed by act two, and serving of the main course, during which the audience will have a chance to hone their Poirot/Marple skills as evidence will be distributed. The accusation sheets will then be collected and the solution and prize giving will occur after dessert.

This will be a fun filled evening of good food and entertainment. Booking is essential. For further information or to book please call the pub 01258 837248. £18 per person, to include the entertainment and four course meal.

### Starter

Killer Leek and Potato Soup with crusty bread

### Main Course

Murderous Coq au Vin served with daupinoise potatoes and seasonal vegetables

### Dessert

Death by Chocolate and cream

### Tea and Coffee

Please contact us for vegetarian option and any other dietary requirements.

## The Hambro Arms

Nailton Abbas, Dorset

Come and join us for Fred Gallo's first

# Gourmet Evening

**Saturday 13<sup>th</sup> October at 7:30pm**

Spaces are limited to 35 so reserve early to avoid disappointment.

### Appetiser

**King prawn and olive croute**

With a glass of Prosecco Corte Alta, Italy

### Starter

**Wild boar liver parfait with a shiraz and mustard syrup and toasted salt ciabatta**

With a glass of Côtes du Rhône 'Les Galets', Rhône Valley, France

**Razor sharp lemon sorbet**

### Fish Course

**Seabass with potato galette, sauté girolles and pistachio foam**

With a glass of Mâcon Villages Blanc "Les Pierres Blanches", Burgundy, France

### Main Course

**Cannon of venison with fondant potato, parmesan wafers and oxtail and chocolate sauce**

With a glass of Vieux Remparts, Lussac St-Emilion, St Emilion, France

### Dessert

**Poached butterscotch figs with vanilla anglaise**

With a glass of Vistamar Late H'Moscatel, Chile

### Coffee and mints

**By Reservation Only**

All five courses and wines only £44.95

**Eat, drink & sleep blissfully**

**Tel 01258 880233 [www.hambroarms.com](http://www.hambroarms.com)**



# Forum

Sales & Lettings



Your local and independent agent....renting and selling properties in your area



**01258 459600**

[www.forumsalesandlettings.co.uk](http://www.forumsalesandlettings.co.uk)



For all your Home and Business Flooring Requirements

- Carpet
- Vinyl
- Karndean
- Amtico
- Safety Flooring
- Commercial Flooring

To arrange a free, no-obligation quote:

Home • 01305 787297

Mobile • 0786 355 4536

Email • [djenkinsflooring@gmail.com](mailto:djenkinsflooring@gmail.com)

Proud members of



# COLIN J. CLOSE

## FUNERAL SERVICE



*A family run business,  
serving the local community of  
Blandford and surrounding district*

CHAPEL OF REST  
PRE-PAYMENT PLANS

24 HOUR SERVICE  
MEMORIAL MASONRY

**PEEL CLOSE, SALISBURY ROAD, BLANDFORD**

Tel: 01258 453133

Email: [info@close-funeral.co.uk](mailto:info@close-funeral.co.uk)



*Also at Cemetery Chapel  
Sturminster Newton*

[www.grassby-funeral.co.uk](http://www.grassby-funeral.co.uk)

## Beauty and Massage Therapy

For all of your beauty and massage therapy requirements  
contact Jo at

# Spoilt Rotten

Treatments for both ladies and gentlemen include Swedish Massage, Waxing, Manicures, Pedicures, Makeup, Facials, Airbrush Tanning and many more procedures.

Fully insured and qualified treatments

**Telephone 01258 837014**

Stag House, The Square,  
Milborne St Andrew, DT11 0JF



**Thursdays 9.30 – 11.30**

**Sports Pavilion, Milborne St Andrew**  
£1.50 per session, drinks and snacks provided

If you have a baby, toddler or pre-school child, come and enjoy warm friendly company whilst your little one plays with toys and interacts with other children.

**Website: [www.busy-bees.org.uk](http://www.busy-bees.org.uk)**  
**Contact: Hayley Davis 07919 156578**  
**or Jody Moore 07855 168117**

## Exciting announcement from the Minis

FOLLOWING the success of our Fun Day the Milborne Mini Soccer team were delighted to receive kind donations from Mr Ferguson of Camelco at the Milborne Business Centre, who also kindly allowed us to use his car-park for the event, and also a very kind donation from Barry Bright and Gary Green of Milborne Properties. We are extremely touched and appreciative of all the continued support from the people and businesses of Milborne St Andrew, thank you.

At the time of publication we will also have held our AGM and sign-on day and are now taking a break for the summer. Training will resume on Wednesday 5th September at 5.00pm for all age groups and we look forward to welcoming all of our dedicated players back on that date along with our two new coaches who will be taking on the older boys!

If you have not yet signed on for the 2012/13 season but would like to, please do not hesitate to get in touch. All abilities welcome. Children aged 4–11 years. Training term time only.

Another exciting announcement from the Milborne Minis is the Fundraiser to be held to commemorate the 100th anniversary of league football in the village. Milborne St. Andrew Football Club was first formed in 1912 with their first league match being played in November of that year. On New Year's Eve an enormously successful fundraiser was held in the school room in Chapel Street raising a sum total of £7 for the newly formed club. It was reported that dancing commenced at 8.00pm and didn't finish until 4.00 in the morning.

To mark the occasion we are going to host what we hope will be an equally successful and exciting event, to be held at the Milborne Sports Club on Saturday 15th September. All proceeds will go towards our committed young footballers here in the village, The Milborne Minis. We will be showing off our new Mini Soccer kit, kindly sponsored by DCM Tyres and officially opening our new mini soccer pitches.

But this certainly isn't just about the youngsters! This is for all those of you who have played for and supported the village teams over the years and we really hope you will join us to do enough eating, drinking, dancing and merry-making to do our original founders proud.

Further details will be announced nearer the time, but if you can put this date in your diary and if any of you are able to donate copies of photos, newspaper cuttings, or anything related to Milborne Football or spare photo frames that we could put up on the walls of the club house ready for the day it would be so very much appreciated. Also if you are able to donate anything for our auction/raffle please get in touch with Marie Hayter (Mini Soccer Club Secretary) on 01258 837241 or email me at [milbornestandrewfcyouth@gmail.com](mailto:milbornestandrewfcyouth@gmail.com).  
*Marie Hayter*

## Dorset Historic Churches Trust 'Ride and Stride'

THIS fundraising event takes place this year on **Saturday 8th September** between 10.00am and 6.00pm. The idea is to be sponsored to visit as many churches as possible, either by walking or riding (bicycle or horse). Apparently one year someone even did it by boat, visiting as many coastal churches as possible! Given reasonable weather it can be a very enjoyable day and one meets some very interesting people. The majority of churches have a steward on hand to offer drinks and biscuits.

Dorset Historic Churches Trust has given St. Andrew's Church a generous grant for roof repairs, so it would be good if we could help them in return. What money you raise is shared equally between the Trust and a church of your choice. It is an ecumenical venture so you don't have to nominate a Church of England building. Further details and sponsor forms can be obtained from Pat Tribe, 14 Blandford Hill. Telephone 837684.  
*Pat Tribe*

# Community Contacts

More information about many community organisations can be found on [www.milbornestandrew.org.uk](http://www.milbornestandrew.org.uk)

## Councils

Environment Agency Floodline	0845 9881188	
North Dorset District Councillor	Emma Parker	01258 881631
	Jane Somper	01258 471089
Parish Council – Dewlish	Clerk: Pat Gubbins	01258 881348
	Chair: Mike Claydon	01258 837314
Parish Council –	Clerk: Joyce Holman	01202 880512
Milborne St. Andrew	Chair: Janet Allen	01258 837551

## General – Adult

Computer Drop-in Centre	Rose and Ed Frost	01258 837921
Ladies Group – Dewlish	Judith Bridgen	01258 837157
Memory Lane Swing Band	Gilly Pink	01258 837695
M.A. Neighbourcar	Nigel Hodder	01258 881709
Wednesday Social Club	Margaret Evans	01258 450518
Women's Institute	June Maitland	01258 837235

## General – Youth

Beavers	Mike Mullett	01258 839076
Cub Scouts	Mike Mullett	01258 839076
Hazelnuts out-of-school club	Hazel Barrett	01305 848588
Ladybirds (Playgroup)	Liz Dyer	01258 839117
Scouts	Mike Mullett	01258 839076
Under 5's Group – The Busy Bees	Hayley Davis	07919 156578
Youth Club age 8 – 14 years	Sharon Moss	01258 839210

## Police

Police – Non-emergency contact		101
Community Beat Officer	PC Dave Mullins	01202 223003
		07825 521850
Community Beat Officer (Dorch)	PC Jeremy Cuff	101
Safer Neighbourhood Team		
Blandford Rural South	PC Dave Mullins and PCSO Luke Goddard	01202 223003 or 07825 521850

## School

Milborne 1st School		
Headteacher:	Neil McDermott	01258 837362
Chair Governors:	Jessica Doodes	
Friends of School Chair:	Kate Connolly	

## Special Interest

Bellringers	Pip Howell	01258 837329
Bridge Group	Laurie Benn	01258 837720
Food and Wine Society	Maureen Lock	01258 837929
MSA Allotment Society Chair:	Jo Lovett	01258 837957
Secretary:	Sue Gould	01258 837575
MSA Friendly Art Group	Elaine Anthony	01258 837089
MSA Gardening Club	Sally Dyer	01258 837061
Milborne Players	Roy Sach	01258 837033
Modern Sequence Dancing	Brian Webber	01935 812347
Ranters' Folk Session	Roger Harrall	01258 837371
Round Robin Ramblers	Ian Bromilow	01258 880044

## Sport

Abbey Swimming Club	Pat Cowan	01258 880601
Adult Tap Dancing Milton Abbas	Libby Goodchild	01305 268029

Archers – Crossways	Sheila Ryall	01258 837504
Athletics – Junior	David Pearson	01258 837057
Badminton	David Payne	01258 837700
Circuit Training and Pilates	Claire Barratt	01929 554999
		07946 732769
Cricket – Dewlish	Elaine Kellaway	01258 837696
Cricket Club – Milton Abbas	Andy Smith	01258 880310
Cricket – Junior (U11 – U13)	Andy Smith	01258 880310
Football – Adult	Matt Hall	07846 262717
Football – Reserve Team	Tom Lane	07786 156335
Football – Under 11s	Marie Hayter	01258 837241
Running Group	Anne-Marie Pearson	01258 837057
Skittles – Dewlish	Frank Ross	01258 837366
Sports Club		
Chairman:	Jenny Balcon	01258 837121
Bookings:	Alice Harrall	01258 837371
Table-tennis	Sandra Shannon	01258 837253
Tap Dancing for Men and Women		01258 880523
Tennis	Dennis Nelson	01258 837734
Tennis (Members Secretary)	John Sanderson	07900837049
Yoga	Sue Chapman	01305 848053

## Village Hall

Dewlish		
Chairman:	Alex Carter	01258 837312
Secretary:	Alex Carter	01258 837312
Milborne St. Andrew		
Chairman:	Paul Tasker	01258 837590
Booking Secretary:	Alice Harrall	01258 837371



## MILBORNE TENNIS CLUB TENNIS ACADEMY

LTA LICENSED COACHES

### 2012 SUMMER SCHOOL JUNIOR COACHING PROGRAMME

#### 6 WEEK COURSES 5 DAY SCHOOL HOLIDAY TENNIS CAMPS

MILBORNE ST ANDREW	PUDDLETOWN	MILTON ABBAS
6 Weekly Sessions Start Mon July 9th 5-8pm Classes 3 - 16 yrs		6 Weekly Sessions Start Wed July 11th 5-8pm Classes 5 - 16 yrs
5 Day Tennis Camps Mon-Fri 30th July-3rd Aug Mon - Fri 6th - 10th Aug	5 Day Tennis Camps Mon-Fri 30th July-3rd Aug Mon - Fri 6th - 10th Aug	5 Day Tennis Camps Mon-Fri 30th July-3rd Aug Mon - Fri 6th - 10th Aug
5 x 1 Hour Sessions per day Classes for 3 - 16 yrs	5 x 1 Hour Sessions per day Classes for 3 - 16 yrs	5 x 1 Hour Sessions per day Classes for 3 - 16 yrs
5 x 3 Hour Sessions per Day Classes for 7 - 16 yrs	5 x 3 Hour Sessions per Day Classes for 7 - 16 yrs	5 x 3 Hour Sessions per Day Classes for 7 - 16 yrs

REGISTER NOW AND BOOK!

Call 07805296535





# Community Events Diary

Add your event to this diary by contacting the **Reporter** – tel: 01258 837700 or email: msa.reporter@yahoo.co.uk

## August

- Wednesday 1st **Wednesday Club** Mystery Tour – see page 25.  
Thursday 2nd **'A Little Bird Told Me'** presented by Snail Trail (Artsreach) Village Hall 10.30 to 11.30am. Short stories suitable for age 3yrs + – see page 11.  
**Coffee and Cakes** St Andrews Church 11.00am – see page 21.
- Wednesday 8th **Dor-lympics** (Artsreach) Village Hall 10.30am to 4.00pm. Workshop for children aged 6 years to 10 years – see page 11.
- Thursday 9th **WI** Outing to Sherborne.
- Wednesday 15th **'There's No Business Like Show Business'** (Artsreach) Village Hall Song and Dance Workshop with Claire Camble Hutchins for 6 years + 10.30am Show 3.45pm – see page 11.  
**Parish Council Meeting** (Plans) Village Hall 7.30pm.
- Saturday 25th **Village Lunch** Village Hall 12.15. Open to anyone – see pages 2 and 25.
- Monday 27th **Athelhampton Benefice Fete** – see page 21.
- ## September
- Wednesday 5th **Wednesday Club** Village Hall 2.00pm – see page 25.  
Thursday 6th **Coffee and Cakes** St Andrews Church 11.00am – see page 21.
- Friday 7th **Friday Drop-In** Coffee, Cake and Computers re-opens 10.00pm.
- Saturday 8th **Dorset Historic Churches Trust 'Ride and Stride'** – see page 15.
- Wednesday 12th **Curry Supper** 24 Stileham Bank – see page 21.  
Thursday 13th **WI** Dorset Coppicing by Terry Heard Village Hall 7.30pm.
- Friday 14th **Reporter** final deadline for copy for the October magazine.
- Saturday 15th **100th Anniversary Fundraiser** Milborne Sports Club – see page 15.
- Wednesday 19th **Parish Council Meeting** Village Hall 7.30pm.  
Friday 21st **"Dying for a Drink"** by Ian McCutcheon The Royal Oak in conjunction with The Milborne Players 7.00pm – see page 15.
- Saturday 29th **Village Lunch** Village Hall 12.15. Open to anyone – see pages 2 and 25.
- Saturday 29th–  
Sunday 30th **Flower Festival** St. Andrew's Church 9.30am to 5.00pm – see page 31.

## Regular Bookings at the Village Hall

- Ladybirds Playgroup** Monday–Friday 8.30am–1.00pm MH (term time only)  
**Beavers** Monday 6.00–7.15pm MH (term time only)  
**Scouts** Monday 6.00–8.00pm CR/MH  
**Players** Monday 8.00–10.00pm MH  
**ABC Line dancers** Tuesday 7.30–10.00pm MH  
**Cub Scouts** Tuesday 5.45–7.15pm MH (term time only)  
**MSA Friendly Art Group** second and fourth Wednesday 7.00–9.00pm CR  
**Wednesday Club** first Wednesday 2.00–4.30pm MH  
**Gardening Club** fourth Thursday 7.30–10.00pm MH  
**Karate** Thursday 5.10–6.40pm MH  
**Village Hall Committee** third Thursday 7.30–10.00pm  
**Women's Institute** second Thursday 7.30–10.00pm  
**Coffee, Cake and Computers** Friday 10.00am–12.00 noon CR  
**Sequence Dancing** third Saturday 7.30–10.30pm MH  
**Village Lunch** last Saturday of the month 12.15–2.30pm MH  
**Milborne Praise!** Plans to be announced.  
**Artsreach Events** – look out for the posters.

Check Village Hall Notice Board for any other events that are one off for you to join in with.

## Regular Bookings at the Village Hall Multi Sports Area

- Social Tennis Adults** Wednesdays 4.00–8.00pm  
**Social Tennis Adults** Sundays 10.00am–1.00pm  
**Tennis Adult Beginners** Sundays 9.00–10.00am

## Regular Bookings at the First School

- Pilates** Monday 7.00–8.00pm (term time only)  
**Yoga** Tuesday 6.15–7.45pm (term time only)  
**Badminton** Wednesday 7.00–9.00pm (term time only)  
**Circuit Training** every Thursday 7.00–8.00pm

## August/September at the Sports Pavilion

**The Busy Bees** Under 5 Group from 9.30am to 11.30am on Thursday term time only. Contact Hayley Davis (07919156578).

**Table Tennis** from 7.00pm to 9.00pm every Monday evening. Contact Sandra Shannon Tel. 837253.

### Milborne Mini Soccer

Training will resume on Wednesday 5th September at 5.00pm.

## 100 CLUB

The next two draws are at 8.00pm in The Royal Oak, on Tuesday 28th August and Tuesday 2nd October  
Results of the July and August draws will be published in the October Reporter

**New members always welcome for just £1 a week!**

Contact:

June Maitland 837235 or Denise Sanderson 837049

## Found

A 29cm white plate left on Bladen View and friend's table at The Royal Oak on the occasion of the Jubilee Party. Tel: 837700.

## KMc Electrical Services

All types of electrical work undertaken for domestic, industrial and commercial properties

- Extra points to full rewiring
- Test & Inspection of building wiring
- Three phase
- Emergency callouts

No job too small

Professional, Quality service

Tel: 01258 881439

Mob: 07712 646131

Email: info@kmcelectrical.co.uk

ELECSA

REGISTERED MEMBER  
ECA

TRUST MARK  
Approved Electricians  
www.trustmark.org.uk



# Kemp & Co.

www.kempandcoproperty.com

Contact your local office now for  
a FREE Rental Appraisal and  
Expert Advice from  
ARLA Qualified Specialists

Tailored Services to suit your needs  
Fixed Tenant Find Fees  
Free Rent Guarantee Insurance  
Extensive Marketing

*Protecting You,  
Protecting Your Investment*

9 Challacombe Square, Poundbury  
Dorchester, Dorset, DT1 3SX  
01305 251800

## Philip Noyes Garden Services

Tel: 07736415357 01258 839129

pbnoyes@yahoo.com

- ◆ Garden maintenance
- ◆ One off tidy ups
- ◆ Overgrown garden clearance
- ◆ Large or small gardens
- ◆ Rotovating
- ◆ Turfing
- ◆ Planting
- ◆ Garden design
- ◆ Fencing
- ◆ Landscaping
- ◆ Weed control



In need of a Window Cleaner?

## Darren and Sarah

for a friendly and reliable service

# Clear Vision

Fully insured for complete peace of mind

For that clearer vision just call:

**01929 462273 / 07704 656777**

or email: clearvision1996@hotmail.co.uk

Domestic and Commercial  
Gutters Downpipes Facias Soffits  
Conservatories Flash Roofs

BERE REGIS MOT & SERVICE CENTRE

TEL: 01929 472205

**MOTs**  
(No Re-Test Fee within 10 working days)

**SERVICING**

**REPAIRS**

**BRAKES \* EXHAUSTS**

**COMPUTERISED DIAGNOSTICS**

**LATEST EQUIPMENT FOR  
MOST MAKES AND MODELS**

**OVER 30 YEARS' EXPERIENCE  
IN THE MOTOR TRADE**

Proprietor: Bill Greer  
Unit 1 Townsend Business Park  
Bere Regis, BH20 7LA  
(At rear of Shell Service Station)

## Children, young people and families in the benefice

OUR churches are looking to improve what we offer for families with children. What would you like to see? Have you had your children baptised and made promises that you will bring them up as part of the church community but are struggling to put that into practice? Is a Sunday a difficult time for you to come to a service? Do you find church too complicated or uninviting? I will be convening two meetings in September for anyone interested in this area of the church's work. We'd love to hear from children as well as adults. These meetings are for anyone who would be interested in attending activities/services aimed at children, young people and families, but also for those who would be willing to be leaders or helpers in any way, behind the scenes or upfront.

So that as many people as possible can share their ideas, we will have one meeting in the daytime after school and one in the evening. The evening meeting will be on Monday 17th September from 7.30-9.00pm at Puddletown and the afternoon session on Wednesday 19th September from 3.30-5.00pm at Milborne St. Andrew First School.  
Sarah Hillman

## Ask Millie – your problems solved



Thank you everyone who wished me well on my holiday. I have returned fit and very tanned and keen to get my teeth into your problems. So having girded up my ancient loins – here we go.

Dear Millie

*What has happened to my vegetables this year? Everything came up alright, but despite feeding and weeding, they're a total washout.*

Millie says – Washout's the word isn't it! Too much rain. It's washed away the feed, made the ground too soggy coupled with no sun and few bees, no veggies and for my garden soggy roses. There's nothing we can do, just hope for a better year next year – sorry.

Dear Millie

*I'm really fed up with the amount of money being spent on this torch relay round the country. Surely money could be better used on the health service or other needful things?*

Millie says – Don't you feel that money used to lift our spirits and remind us of our pride in

this country is well spent? Haven't you seen the news reports of happy people cheering the torch on its way? I remember much harder times than these and I can assure you keeping up morale is equally important.

Dear Millie

*I read we will have wheelie bins in Milborne in the next few years. Where are we supposed to keep these ugly things? How much longer will this take the bin men to collect? At present my family only fill half a bag a week. I hope this means they will only be collected once a month thus saving the Council some money.*

Millie says – These nasty bins are sadly a fact of life and they are coming closer. You can 'disguise' them with transfers, hide them in the garage until emptying day or as a last resort, if you really can't stand them, erect a small enclosure. Although you won't fill your bin each week, some households, even after recycling everything possible, will still fill a bin – so they must be collected frequently. Having wheeled your bin to a convenient place, I don't see it taking any more time for it to be emptied than at the present, you just have to wheel it back. Living alone I have to drag out a black bag every Wednesday. Initially it would seem better to have a bin on wheels, but if living at the top of a hill, I'm doubtful.

Any comments readers?

Large Beer  
Garden

11 En Suite  
Letting Rooms



The Fox Inn

Ansty

Private Parties  
Welcome

Function Room  
Available

Thursday 16th August ~ Italian Night  
Join us for an evening of all you favourite  
Pizzas, Pastas and Salads  
just £12.95 all you can eat!

Bank Holiday Sunday 26th August  
'Devil May Care' PARTY NIGHT!  
'Our Summer has been awful, but the Devil  
may care because we don't!!'

- Music ● Happy Hour 7.00-8.00pm
- Fancy Dress (Devil themed) ● Good Food

For reservations please call 01258 880328 or drop in and see us

Ansty Dorchester Dorset DT2 7PN  
www.anstyfoxinn.co.uk

## Olympic Torch Thanks

I WOULD like to thank everyone who helped make the Olympic Torch journey through the village such a success, including The Royal Oak for looking after the school children, Artsreach who organised Bowjangles who kept them thoroughly entertained, The local farmer who provided and set up the trailer and generator so we could listen to music and singing from the jazz band while we waited for the torch to arrive, and the photographers who took detailed pictures of the day.

Finally a BIG thank you to all the stewards, for their help and organisation, putting up the bunting and signage, and going on to steward the crowds in the pouring rain. They all worked so hard, most of them soaking wet at the end, but never complaining. You all made the event run much easier. Thank you.  
Jenny





THE BENEFICE OF PUDDLETOWN, TOLPUDDLE AND MILBORNE WITH DEWLISH  
PART OF THE CHURCH OF ENGLAND IN THE DIOCESE OF SALISBURY

## The miracle of food

I have just read a very interesting book: *Take This Bread* by Sara Miles. It has left me with all sorts of questions about what the Church should be, if it is to follow truly in the steps of Jesus.

The book is biographical. Sara walks into a church one day as an atheist, receives bread and wine, and her whole life is transformed. Learning more about God as she goes along, Sara is convinced that there is something special about the relationship between faith and food. She sets up a food pantry at the church, to which those without enough food for themselves and their families can come each week and receive bags of groceries and fruit and vegetables as a gift.

One big difference between her pantry and others is that hers is open to all. Unlike other similar projects no one has to fill in any forms or undergo any kind of social security check or other assessment. Food is available to all who wish to receive it. There are clear parallels with Jesus's care for all people, especially the poor and vulnerable.

In that area of San Francisco, even working people were struggling to find enough money for rent and food, quite apart from any other of life's necessities. A food pantry was a practical way of serving others, while reflecting the love of Christ to them.

Church is not primarily about a building where people go once a week to worship God. The true Church is a body of people, seeking to follow Christ in all that they do.

Across our benefice, the church councils are thinking about how we can meet the needs of people in our villages in different ways: offering different kinds of worship, activities for children and young people, service in our communities and so on.

I have one question: how can we, the church communities, be Christ more effectively to the people in our villages?

So, come on, tell us what you think. Are you one of the people who sits at home complaining that "the Church" should be doing this or that and doesn't? Or are you somebody who used to be part of the church community but has drifted away? Are you at home alone needing friendship? What food do you need?

We won't be able to meet every wish or desire, but in order to help us discern where our energies should go, it would be really helpful to have the views of those outside the church as well as inside.

Why not e-mail me ([sarah.c.hillman@tesco.net](mailto:sarah.c.hillman@tesco.net)) with your ideas and let's see what happens?

With love

*Sarah Hillman*

## CHURCH SERVICES August 2012

### THURSDAY 2nd August

12 noon Lunch-time Communion Milborne

### 5th August – Trinity 9

9.30am Parish Communion Tolpuddle  
9.30 Family Communion Milborne  
11.00 Parish Communion Puddletown  
6.00 pm 1662 Evensong Dewlish

### 12th August – Trinity 10

8.15am 1662 Said Communion Puddletown  
9.30 Methodist United Service Tolpuddle  
9.30 Parish Communion Milborne  
11.00 Family Service + baptism Puddletown  
11.00 Family Communion Dewlish

### THURSDAY 16th August

12 noon Lunch-time Communion Puddletown

### 19th August – Trinity 11

9.30am 1662 Said Communion Milborne  
9.30 Family Communion Tolpuddle  
11.00 1662 Morning Prayer Puddletown  
11.00 Parish Communion Dewlish

### 26th August – Trinity 12

9.30am All-Age Worship Tolpuddle  
9.30 1662 Holy Communion Milborne  
11.00 Family Communion Puddletown  
11.00 Family Service Dewlish

## September 2012

### 2nd September – Trinity 13

9.30am Parish Communion Tolpuddle  
9.30 Family Communion +  
thanksgiving Milborne  
11.00 Holy Communion Puddletown  
11.00 1662 Morning Prayer Dewlish

### THURSDAY 6th September

12 noon Lunch-time Communion Milborne

### 9th September – Trinity 14

8.15am 1662 Said Communion Puddletown  
9.30 Methodist United Service Tolpuddle  
9.30 Parish Communion Milborne  
11.00 Family Service Puddletown  
Village Hall  
Dewlish

11.00 Family Communion Dewlish

### 16th September – Trinity 15

9.30am 1662 Said Communion Milborne  
9.30 Family Communion Tolpuddle  
11.00 1662 Morning Prayer Puddletown  
11.00 Holy Communion Dewlish

2.00pm Thanksgiving for a child Milborne

### THURSDAY 20th September

12 noon Lunch-time Communion Puddletown

### 23rd September – Trinity 16/Harvest

9.30am Harvest Festival Tolpuddle  
9.30 1662 Holy Communion Milborne  
11.00 Family Service Dewlish  
6.00pm Harvest Festival Service Puddletown  
and Supper

### 30th September – Trinity 17/Harvest

11.00am United Benefice Harvest Milborne  
Festival Communion

3.00pm Baptism Milborne

### MORNING PRAYERS

(Monday – Thursday 8.15am; Saturday 9.00am)

Monday – Puddletown Tuesday – Tolpuddle

Wednesday – Milborne Thursday – Dewlish

Saturday – Puddletown

## Church Contacts

**Priest in Charge** Sarah Hillman  
01305 848784

E-mail: [sarah.c.hillman@tesco.net](mailto:sarah.c.hillman@tesco.net)

**Associate Priest** Sarah Godfrey  
01258 839067

## Church Wardens

### Milborne St. Andrew

Eva Stockley 01258 837468

John Wright 01258 839090

### Dewlish

Jim Burg 01258 837466

Sue Britton 01258 837218

[www.milbornestandrewchurch.org.uk](http://www.milbornestandrewchurch.org.uk)

### Benefice Office

Marion Bishop 01258 839190

[puddletownadmin@fsmail.net](mailto:puddletownadmin@fsmail.net)

## Church Cleaning – w/e Saturday

4th August Sue Lee and Val Hodges

11th August Josie and John Wright

18th August Carolyn Martin and  
Elizabeth Walker

25th August Margaret Hurley and  
Eva Stockley

1st September Geoff and Pat Bull

8th September John and Anne Miller

15th September Victoria Bone and  
Lin Chatfield

22th September Sue Lee and Val Hodges

29th September Josie and John Wright

## Flowers – w/e Saturday

4th and 11th August Jill Harvey

18th and 25th August Tony Fox

1st and 8th September Eve Richardson

15th and 22nd September Angie Nowell

29th September HARVEST All please

## MILBORNE ST. ANDREW CHURCH NEWS

**Roger's Rant Weekend** – We had plenty of stall holders but a disappointing number of buyers at our Saturday Coffee morning and Table Top Sale. A lot of very good bargains and lovely home-made cakes with a coffee were missed. Everyone enjoyed the occasion and we hope that those who booked a table were not too disappointed.

At the Sunday Family Communion service we very much enjoyed the music of Stephen Earwicker and his musicians. We sang hymns to folk music and listened to their singers during Communion. In the evening over fifty people enjoyed a concert by about ten very talented musicians. Everyone was very interested to see how the building work for our new facilities is progressing. We look forward to welcoming more of these events in the future and making use of the church for the community.

These two events helped us raise another £200 for the Flush Fund. Thank you to everyone who helped and came along to support the church. Special thanks to Roger and Alice for all their hard work for our community.

**Building work in church** – This is progressing slowly, partly due to the weather. We need a dry spell for the contractor to dig and install the drainage so that the road is not closed for a long period of time. We are at the stage of choosing furnishings for the kitchenette within the contract price. There will also be some purchasing of equipment we need for use in the kitchenette. When work has been completed there will have to be a mammoth 'spring clean' of the whole church. Any help will be very much appreciated.

There are some items in church which need replacing such as some curtains and we would like to consider curtaining off the tower area now the font has been removed. We need to cover the unsightly electrical area and generally tidy up the whole church. In time we would like some new tables and chairs for use in the fellowship area.

To do this we need your help in energy or money!!

This is **your** church which we all need from time to time. **Your** church can become much more of a community centred meeting place. **Your** church needs you – **You** need **your** church.

You are welcome to discuss any of the above in more detail with Rev. Sarah Hillman (01305 848784), Rev. Sarah Godfrey (01258 839067) or the churchwardens Eva and John.

### Forthcoming events

On **Thursday 2nd August** we have Coffee and Cakes at 11.00am in church. This is a good opportunity to visit the church and have a chat. You are very welcome to stay for our shortened 12 noon Communion Service.

**Monday 27th August** is the Athelhampton Benefice Fete. We are running the Bric-a-brac stall and the Toy stall. Please let Eva (837468) or John (839090) know if you have any saleable items for any of the stalls. This will be a very good family day out – see notice boards for further details.

On **Thursday 6th September** there will again be Coffee and Cakes at 11.00am followed by Communion at 12 noon.

**Dorset Historic Churches Trust 'Ride and Stride'** – This fundraising event takes place this year on **Saturday 8th September**. As Dorset Historic Churches Trust has given St. Andrew's Church a generous grant for roof repairs it would be good if we could help them in return. (See page 15.)

On **Wednesday 12th September** there will be a **Curry Supper** at 24 Stileham Bank. Two years ago I held a supper in my garden to help raise money for the church and I hope to repeat this very enjoyable evening. Come along any time during the evening, 6.00 to 9.00pm, and choose from a number of different curries, a sweet,

and soft drinks. Bring your own wine or beer if you wish. The cost is £7.00.

For catering purposes I will need to know numbers so tickets will be available from churchwardens Eva (837468) and John (839090), or you can use the tear-off slip at the bottom of this page and put it through my door (24 Stileham Bank) with the money.

*Eva Stockley*

**Flower Festival** – We are planning a flower festival with a harvest theme in St. Andrew's Church for **29th and 30th September**. The church will be open each day from 9.30am to 5.00pm. On Sunday there will be a Benefice Harvest Festival Service at 11.00am. (See page 31.)

## DEWLISH CHURCH NOTES

### Evensongs are proving popular

THE Coffee Morning held at the home of Mrs Daphne Berridge was well attended. Everyone enjoyed meeting up once again. Because of the weather we were only able to admire the garden from inside, but it still looked beautiful. Many thanks to Daphne and her helpers. The sum of £136.61 was raised for church funds.

At the meeting of our Church Council it was decided to have another Evensong as these are proving popular. Therefore we will have **Sung Evensong** on Sunday 5th August at 6.00pm instead of Morning Prayer.

Please do not forget the **Athelhampton Fete** on **Monday 27th August**, 12noon–3.00pm. Dewlish is running the jams, marmalades, pickles and garden produce stall, and we shall be very grateful for any donations. There are also raffle tickets circulated round the villages, which should help to boost our profits this year. All money raised helps towards the running of the benefice office and benefice expenses.

*Daphne Burg*

### Christian Fellowship Group in Milborne

Chris and Angie Nowell host an inter-denominational Bible Study Group in their home every other Thursday morning.

This involves bible readings and informal discussion followed by tea and biscuits.

If this is something you might enjoy joining in, we would be very pleased to see you.

For details telephone 837543  
or email [canowell76@btinternet.com](mailto:canowell76@btinternet.com)

### Do you need a lift to church?



If you have difficulty getting to church or need transport when the Benefice Service is at another church, we can arrange transport for you. Please contact Eva (837468) or John (839090).

### St. Andrew's Church CURRY SUPPER

Wednesday 12th Sept. 6.00 to 9.00pm, 24 Stileham Bank

Please reserve me ..... tickets @ £7.00 each

Name .....

Address .....

Tel: .....



## P J AIKEN LIMITED

INDEPENDENT FINANCIAL ADVISERS

4 Trinity Street, Dorchester, Dorset DT1 1TT

Telephone: Dorchester (01305) 266676

Fax No: (01305) 251569

[advice@pjaiken.co.uk](mailto:advice@pjaiken.co.uk)

### Specialists in:

Financial Planning

Investment Advice

Inheritance Tax Planning

Pensions and Retirement Advice

Life Assurance

Health Protection



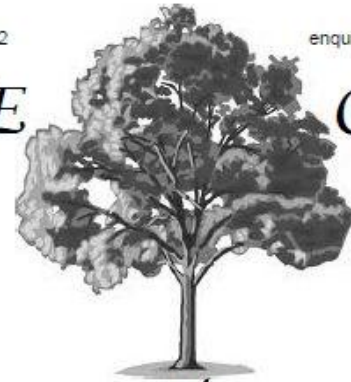
*Security is Strength*

P J Aiken Limited is authorised and regulated by the Financial Services Authority

Tel: 01258 837352

[enquiries@oakpub.co.uk](mailto:enquiries@oakpub.co.uk)

# THE OAK



at  
*Dewlish*

At The Oak at Dewlish, we pride ourselves in serving a regularly-varying range of real ales. We also want you to enjoy every mouthful of our food. This is why we strive to bring you delicious dishes that combine the best of English pub food, with ingredients from the local farms and nearby producers.

We have 4\* self catering accommodation and 2 newly furnished ensuite B and B rooms.

[www.oakpub.co.uk](http://www.oakpub.co.uk)



## B.S.T.

Building Services

Carpentry- 1st and 2nd fix  
Brick and blockwork  
Kitchens and bathrooms

Milborne St. Andrew

24 HR Callout

Fully insured

07808 360513

01258 837486

Building maintenance  
Windows and doors  
Tiling and flooring

[www.bstbuildingservices.co.uk](http://www.bstbuildingservices.co.uk)



**FIRST CLASS CARPENTRY AND BUILDING WORK**

# Heathcote House

GUEST  
ACCOMMODATION  
Tel: 01258 837219

Heathcote House is a lovely Grade II listed guest house right in the heart of Milborne St Andrew. We offer a warm welcome and friendly service, all rooms have king size beds, en-suite bathrooms and are tastefully refurbished to a very high standard.

- Aga cooked breakfast served in the conservatory under an old grape vine.
- Guests drawing room with big comfy sofas and log fires in the winter.
- A secluded garden with delightful seating areas.
- The perfect place from which to explore Dorset's unspoilt countryside and famous Jurassic coast a few miles away.



Heathcote House, Milborne St Andrew, Dorset DT11 0JG. Website: [www.heathcotehouse.co.uk](http://www.heathcotehouse.co.uk)

## Food, Ice-cream and Music – thank you

THANK you to all the businesses and volunteers that helped on Thursday when the torch went through the village.

Not only did the ice cream man turn up (hope he sold some!), the fish and chip van was there, and a brave band played us through.

Many thanks also to the Gumby's Airstream café that opened up on the forecourt of the factory at the top of the village, not only did they serve hot drinks and food to all the wet souls (as did the other businesses) but they are also giving a donation from their takings to the charity Mosaic based in the village.

## Olympic Best House Winner

THE winner of the Best Decorated House in the village for the Olympic Torch Relay was judged to be 2 The Causeway.

Congratulations to Sue and Alan Lanes who won the £30.00 meal voucher kindly donated by Sarah Fox of The Royal Oak.



## Victim Support's vital role at the June WI

DEREK Radley's talk about 'Victim Support' started with the good news – we live in one of the safest counties in the country. He went on to give us a very informative insight into this national charity which gives help to victims of crime, their families and friends.

Victim Support was set up nearly 40 years ago to help the one person most affected, and at that time least supported – the victim – and has grown to be the oldest and largest such organisation in the world. Volunteers offer help to victims and to witnesses who have to attend court.

Derek offered clear advice and practical tips on crime prevention, showing us a range of purse chains, alarms and UV pens and cheerfully answered our many questions. Nelda Oakes, who thanked him, said that it was good to know that such vital support was available.

## Canterbury Tales at the July WI

WE welcomed the Ven. Patrick Evans, lately Archdeacon of Canterbury, who cheerfully offered himself as the only "visual aid"! A solicitor before training for ordination, he was eventually "recycled" to Canterbury as Archdeacon in 2002. As well as his role within the Cathedral and across the diocese, he acted as the "eyes and ears" of the Archbishop, or, as he said amusingly, "the Archbishop's Rottweiler". Balancing the various aspects of the job, he served with Archbishops George Carey and Rowan Williams.

Patrick went on to describe the Archdeacon's residence, which was built in the 11/12th century. Especially splendid, its spacious accommodation is often used by visiting clergy from around the world, and the grounds and gardens for parish fetes and charitable events. It has a stunning setting with a glorious outlook and Patrick clearly felt privileged to have lived there.

This was a fascinating personal account of his time at Canterbury and we certainly wish him well with his imminent move from Tolpuddle to the West Country. In her vote of thanks, Linda Wright said Patrick was in fact far too nice to be a Rottweiler!

There will not be a meeting in August, apart from the Summer outing on Thursday the 9th. On Thursday, 13th September, Terry Heard will talk about 'Dorset Coppicing'.  
*Pat Bull*

## Day out for six WI Ladies



Despite the weather we had a lovely day on Ladies' Day at Royal Ascot. Left to right: Heather, Veronica, Margaret, Jenny, Phil and Nelda.

Timeless Tea  
Vintage China Hire  
www.timelesstea.co.uk



Are you planning a special celebration or event? Your wedding, birthday party, baby shower, christening, diamond jubilee celebration or an afternoon tea party with friends!

Timeless Tea offers a range of specialist services, let us help you to mix and match the services that you require to make your day or event special and unique to you alone!

To discuss any of our services or to request a bespoke quotation for your special day please contact :-

Carla Taylor Mobile: 07881735315  
or please email us on :-

[info@timelesstea.co.uk](mailto:info@timelesstea.co.uk)



**WOODS**  
(DORCHESTER) LTD

# Funeral Directors

Established in Dorchester since 1878

## Monumental Masons

AVAILABLE 24 HRS A DAY

Paul R. Gawler M.B.I.E. Dip.F.D. M.B.I.F.D.

Pauline J Guy Dip.F.D. M.B.I.F.D.



**DORCHESTER 01305 250425**



Find more firms you can trust at  
[www.buywithconfidence.gov.uk](http://www.buywithconfidence.gov.uk)

# FLAMECARE



Reg No 116862

**Nat. Gas & L.P.G. Plumbing & Heating Engineers**

Our services include,

Boiler breakdowns, repairs & replacements.

Regular maintenance, repairs & installation of all gas appliances,

Gas safety certificates and inspections.

Power flushing and system cleansing.

General plumbing, cylinder and immersion replacements.

View our details on the **WHICH** website or contact us anytime on:

**01258 837430 or 07831137313.**





## Oh no! No more cake

THE Friday Coffee, Cake and Computers at the village hall is now closed for the summer and will re-open on Friday 7th September. I will just have to make my own.

## Books Books Books!

WE have a "library" of used books at the pub that, for a small donation, people can take home. This is a good source of income for the numerous charities that we collect for. However, this has been so popular that we are running out! If you have any books you would like to get rid of, hard backs, soft backs, fiction, non fiction, we would like to give them a temporary home, and so keep the donations coming in! Please just drop any that you have into the pub, or give us a call and we will come and collect them! The Royal Oak 01258 837248



## BZZY B'S CHILDMINDING

Over 25 year's professional experience: Susan Buxton and her team offer Ofsted registered, quality assured child-minding care

'Home from Home' and 'Out and About Fun',  
*Flexible by the hour care*



**Play, Explore and Learn with Us!!!**

**For more information**

**Please call Susan on 01258 837560**

**E-mail: susanb5@tiscali.co.uk**

## Milborne St. Andrew Village Lunch

ARE you aware we have a monthly village lunch in the village hall? This is open to everyone, it's a friendly communal time. Our committee makes sure the hall is welcoming with table decorations and waitress or waiter service. We offer a main course and pudding with a glass of wine followed by tea or coffee and mints. Our diners are happy to help afterwards with the tidying up. The food is provided by The Royal Oak, delivered freshly made. If this appeals to you at a cost of £6.50 why not join us on the last Saturday of each month from 12.15 until 2.00pm.

Places must be booked, either from the Drop-In on Friday mornings in the village hall or by contacting me direct on 839090.

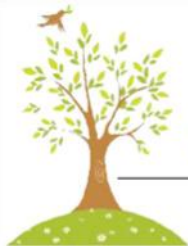
*Josie Wright*

## Wednesday Club goes to the seaside

OUR club, with members from Blandford and Chescombe Court in the next village, Winterbourne Whitchurch, almost filled two small coaches. The buses took us to Norden where we boarded the steam train to Swanage. We had about two hours to have a look around and get a bite to eat and a cheering cuppa as it was raining. The buses brought us home again from Swanage. We all enjoyed it and the sun did come out now and again. We will be using the "Dorset Community Transport" again as it was very comfortable.

Might I remind you our next meeting will be 1st August, and will be a Mystery Tour in the early evening and will include a carvery so it should be a nice trip. One bus will go from Stileham Bank and the second one will pick up en route from Blandford. Let's hope the weather is good. The September meeting will be in the Village Hall on the 5th at 2.00pm.

*E Richardson*



## Dorset Carpet Care

*cleaning with care*

Dorset Carpet Care is a local, family run business specialising in the cleaning and restoration of carpets, rugs soft furnishings and stone or tiled floors, in homes and businesses throughout Dorset.

We use various technologies including the latest truck-mounted hot water extraction system that can clean deeper and more effectively than other methods.

We belong to the NCCA and IICRC, which means we are fully qualified, honestly priced and our services come guaranteed.



- ✓ hot water extraction deep cleans
- ✓ removal of stains and smells
- ✓ stain protector application
- ✓ treatments for allergies and pests



Call Andrew or Joanne  
on 01258 837092

[www.dorsetcarpetcare.co.uk](http://www.dorsetcarpetcare.co.uk)



## GERRY'S PLANTS

Shrubs, Perennials, Climbers,  
Summer and Winter  
Bedding and Baskets  
Soft Fruit and Vegetable Plants

Come and see them at

12 The Rings  
Milborne St Andrew  
Tel: 01258 837386

Enjoy a relaxing  
afternoon out  
at  
**Athelhampton  
House**

**Summer Offer**  
Cream Tea for  
**£1.00**  
when you visit  
Athelhampton\*  
with this ad

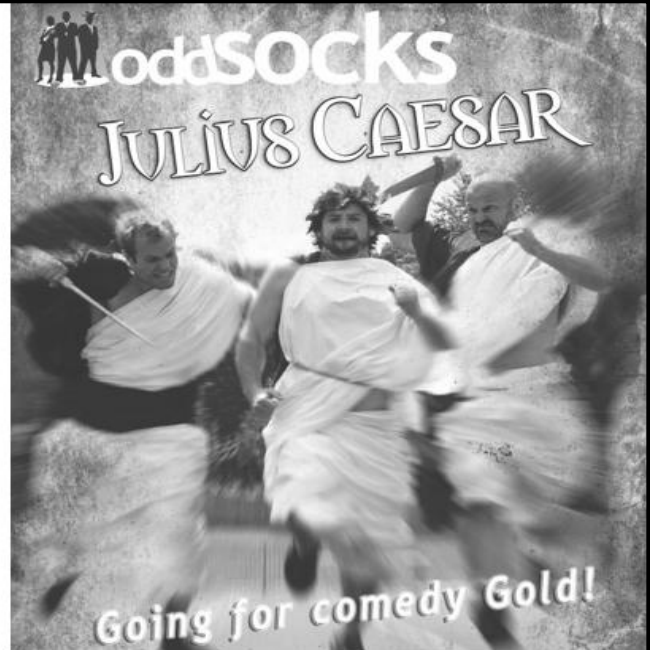


Enjoy this fascinating 15th Century house with stunning interiors and superb grounds. Enjoy the world famous gardens, the boardwalk along the river, then follow the children's trail and visit our gift shop. The Topiary Restaurant serves morning coffees, delicious lunches and afternoon tea and cakes, with a carvery available on Sundays.

**Opening Times**  
March – October  
Sun to Thur 10.30am – 5pm  
**Admission Charges**  
Child £2.00 (free with this advert)  
Senior £10.00  
Adult £12.00

web. [www.athelhampton.co.uk](http://www.athelhampton.co.uk)  
tel. 01305 848363

Cream Tea (pot of tea x 1, scone, jam, clotted cream) for £1.00 when you visit before 1/10/2012 and pay full Senior or Adult Admission.



**Outdoor Theatre at Athelhampton House**

Friday 24th August 7.00pm - Bring a picnic  
Adult £15.00 - Child £5.00

phone 01305 848363 or online [www.athelhampton.co.uk](http://www.athelhampton.co.uk)

**THE ATHELHAMPTON CINEMA**

Autumn Season starts Sunday 16th September

W.E. - The Artist - Carnage - Best Exotic Marigold Hotel

phone 01305 848363 or online [www.dorsetcinema.co.uk](http://www.dorsetcinema.co.uk)

[www.treeguy.co.uk](http://www.treeguy.co.uk)



**Chris Baxter Arborists**

Pruning, felling, stump grinding,  
hedgework and tree planting

ND Arb. NCH Arb. NPTCs Fully Insured

01258 453 299

[treeguy@btinternet.com](mailto:treeguy@btinternet.com)

**A.J. LAKE**  
**Painting & Decorating**

Interiors & Exteriors

**FREE quotes**

**25+ years experience**

**References available**

**No job too BIG or SMALL!**

**Tel: 01258 837 687**

**Mob: 07989 817 826**



**HEALTHY PETS LTD**

Come and see us for full dietary advice  
plus friendly service

Full range of foods, treats and toys  
for your faithful friends  
Specialist in wild bird food

**DELIVERIES TO YOUR  
AREA EVERY FORTNIGHT**

website - [www.healthypetsblandfordltd.co.uk](http://www.healthypetsblandfordltd.co.uk)

Unit One, Milldown Business Centre  
Shaftesbury Lane, Blandford, DT11 7TD

e-mail - [dave.healthypets@btconnect.com](mailto:dave.healthypets@btconnect.com)

**Tel: 01258 459066**



# designer Gardens





Professional Garden Designer - designing and creating beautiful gardens and landscapes

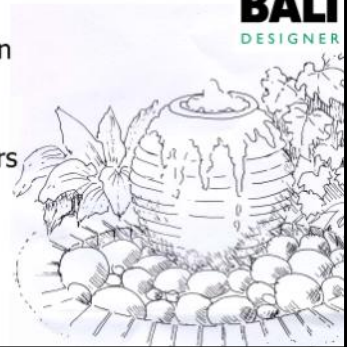


**Maureen Lock**  
16 Huntley Down  
Milborne St Andrew

[www.designergardens.biz](http://www.designergardens.biz)

t: 01258 837929 m: 0778 660 8776 e: [maureen@designergardens.biz](mailto:maureen@designergardens.biz)

-  Creative and practical designs to suit all styles of garden
-  Project management from design to completion
-  Construction by experienced quality landscapers
-  Planting schemes and border designs



## In your Garden

### Seasonal notes and tips from Maureen Lock of *Designer Gardens* **Your Garden in August and September**

I WENT to Hampton Court Flower Show this year for a change, and must give a great deal of credit to all those exhibitors who braved the weather and put on a really good show. It was no mean feat to keep those show gardens looking so good – I did go on the first day however so I don't know what it was like later in the week.

The warm, wet weather has created perfect growing conditions for many of our plants and keeping them under control is quite a challenge! While some things have flourished, others have struggled especially soft fruit and roses which have gone all mushy and mouldy.

There are still some things you can be doing in the garden (it is never ending I know!) – so here are a few suggestions:

Now is a good time to give hedges a good trim to keep them neat and restrict their growth but don't forget to check for any nesting birds before you start cutting.

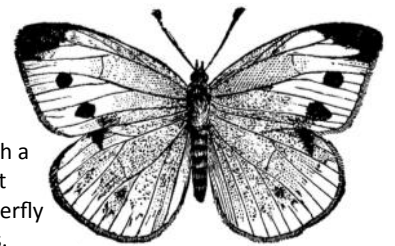
Overgrown shrubs will benefit from a good trim. Over the years they become congested with lots of old stems and dead wood which reduces their flowering capacity. Spring and early summer flowering shrubs produce new stems from the base and now is the time to prune them. You do this by removing one in three of the oldest stems, and also remove any dead, diseased or damaged growth (the three D's). This will open up the middle of the plant allowing it to produce new flowering stems next year. You can do this with deutzia, ribes, philadelphus and weigela.

Prune ornamental trees like flowering cherries and Sorbus as this reduces the risk of diseases such as silver leaf and there are fewer diseases around now to infect any wounds. Pruning them will also allow them to heal properly before winter sets in.

August is also a good time to take cuttings of tender perennials such as Penstemons and fuschia. When collecting cuttings put them in a plastic bag because they can quickly dry out in hot weather and get them into some potting compost as soon as you can. For some late colour plant some autumn flowering bulbs such as colchicum and crocus and they will come back every year.

On the vegetable front – August is a very productive month as many crops are ready to harvest and you are richly rewarded for all your hard work earlier in the year (if they haven't been washed away). There is no need to have an empty bed on the veggie patch because as you harvest your summer vegetables, it is time to plant for winter.

Vegetables such as broccoli, calabrese and winter cauliflowers can be planted, but do remember to cover them with a protective fleece to help prevent the dreaded cabbage white butterfly caterpillars shredding the leaves.



If you get the chance, it is worth having a look at the wildflower meadow behind the village hall. It is coming on a treat, and there are lots of interesting wildflowers in the scree area. I hope to be getting some more seed in August from a donor meadow to add to the existing flowers. The thing I like about wildflower meadows is that they are always changing and are never the same two years in a row. Wild-flower meadows always take a few years to get established and ours is progressing nicely.



## CHRIS PERRINS CHIMNEY SWEEP

FIREPLACE, CHIMNEY, FLUE, WOODBURNER  
INSTALLATION AND MODIFICATION

[www.csweep.co.uk](http://www.csweep.co.uk)

Also:

- HANDYMAN
- INSIDE/OUTSIDE PAINTING
- GARDEN MAINTENANCE
- HEDGE TRIMMING/LAWN MOWING

Enquiries welcome, call: 01305 849470 / 07824 698109



## Greenways Tree Care

### and Garden Services

(fully insured)



Felling  
Reductions  
Pruning  
Stump Grinding  
Hedges  
Lawn Maintenance  
Turfig  
Strimming  
Garden Fencing  
Chippings delivered

Tim Moore

01258 837124

07968 154708

20 years experience  
Free estimates and advice  
Dewlish, Dorchester



Can you  
identify where  
this is in  
Milborne?

Be the first to send your answer to [msa.reporter@yahoo.co.uk](mailto:msa.reporter@yahoo.co.uk)  
or give to any member of the Reporter team  
(Reporter team members can be found on page two).

No prize, just a bit of fun.

Answer in the October Reporter.

Remember you can always see the Reporter in colour  
at [www.milbornestandrew.org.uk/Reporter/index](http://www.milbornestandrew.org.uk/Reporter/index)

Queen Thorne  
LANDSCAPES  
RHS CHELSEA SILVER GILT  
[www.queenthorne.co.uk](http://www.queenthorne.co.uk)

Purveyors of the Finest Gardens

01935 850848

Extend your home and maximise  
your outdoor space

Consultation  
Design  
Construction  
Ground Preparations  
Water Features  
Turfig & Seeding  
Planting  
Renovations  
Wild Flower  
Meadows  
Lawn Care

As seen on the **BBC**



Blanchards Bailey LLP  
Incorporating John Foster-Pegg Solicitors

Do you want a quick  
and painless move...

...try speaking to us before  
you speak to an estate agent

more information @

[www.blanchardsbailey.co.uk](http://www.blanchardsbailey.co.uk)

- experienced legal professionals
- 'legal jargon' explained
- full breakdown of legal costs
- professional & personal

#### Offices in:

Blandford: 01258 459361  
Dorchester: 01305 251222  
Shaftesbury: 01747 440447  
Stalbridge: 01963 363593

## Abbey Swimming Club

at Milton Abbey School 25 metre pool.

Club session times:

Tuesday	6.30pm – 8.30pm
Friday	7.30pm – 8.30pm
Saturday	10am – 12 noon
Sunday	8am - 9am

**Interested?** Come along to the pool  
during any club session to pick up an  
application form or for your  
**FREE INTRODUCTORY SWIM.**

**Great value annual membership  
means you can swim in all sessions  
for around only £1.50 per week.**

**More information?** Call Lynn 880039,  
Pat 880601 or Stephen 881524

#### SWIMMING LESSONS FOR ALL

Juniors, adults, beginners and  
stroke improvers.

Contact Maria 880895 or Richard 837402

RLSS Lifeguard, STA Teacher and  
NaRS training available

[www.abbeyswimmingclub.com](http://www.abbeyswimmingclub.com)

# Martyr Joinery Ltd

## Carpentry & Bespoke Joinery

- All Kitchens
- Furniture
- Windows & Doors
- Timber Buildings
- Timber Flooring
- Fencing
- Vehicle Fit-Outs
- Custom Projects



Each project is undertaken individually, please do not hesitate to contact us for further information

Tel: 07792 640534

[www.martyrjoinery.co.uk](http://www.martyrjoinery.co.uk)

## Milton Abbas Neighbourcar



Do you need transport for surgery and other appointments?

Milton Abbas Neighbourcar is a voluntary transport scheme covering the area served by Milton Abbas surgery. We can take you to medical appointments and certain social events.

**Ring 01258 881709 to register and for more information.  
NEED MORE DRIVERS – PLEASE RING 881709**

All copy for the **October Reporter** must be received by the **14th September**. Please send copy via e-mail to [misa.reporter@yahoo.co.uk](mailto:misa.reporter@yahoo.co.uk) or give to a member of the team.

## Milborne 100 Club

1st PRIZE £100    2nd PRIZE £50

3rd PRIZE depends on number of members paid  
For only £1 a week you can have three chances for a prize in every draw (minimum £5.00)

For information contact:

John Sanderson    Football Club    837049  
June Maitland    Church    837235    Pat Tribe    Church    837684  
Denise Sanderson    Collector    837049

## Bus2Go AUGUST SCHEDULE

Summer Holiday Treats

**Saturday 18th** Bus2Go grabs the beach towels, picnic basket, sun tan lotion and bucket and spade as it heads for the safe golden sands of **Alum Chine, Bournemouth**. This child friendly beach has a children's play area, paddling pool, café and beach patrol plus RNLI Lifeguard.

**Wednesday 29th** Go bananas and visit **Monkey World** with us. \***Adult** £9.75 **Child** (3–15yrs) £6.75 **Senior, Disabled, Carer** £6.75. **Family ticket** £34.00 Single parent (1 Adult, 2 Children) £24.00. \* Prices are based on a party of 10 or more. **Please let us know by August 17th**. Bus fare £5.00 return per person

## SEPTEMBER

Enjoying the late summer weather in glorious Devon

**Saturday 8th** Bus2Go travels cosmic for an action packed day out at the **Milky Way Adventure Park** this all weather theme park is fun for all ages with adult slides, children's shows and much more. \***Adults/Children** £10.00 **Seniors** £7.50 **Under 3's** FREE. \*Prices are based on a party of 10 or more. Bus Fare £15.50 return per person. **Please let us know by 17th August**.

## OCTOBER

Halloween, a spooky adventure in Devon

**Saturday 27th**, Seaton Tramway, ride the spooky tram, children's entertainment, fancy dress optional. Every child receives a 'baddy' bag of treats. \***Adult/Seniors** £9.95 **Child** (3–16yrs) £7.95 **Under 3's** £4.95. \* Prices are based on a party of 10 or more. **Please let us know by 17th August**. Bus fare £15.50 return per person.

## NOVEMBER

Regent Theatre, Christchurch

**Saturday 24th** The Sound of Music, matinee performance. Have a day in Christchurch, enjoy the Christmas Market have lunch in one of the many café's. You may even see Santa as he likes to visit Christchurch for the Christmas Market. In the afternoon enjoy the matinee performance of this ever popular musical. One price ticket £20.00 to include return bus fare. We have a block booking with the theatre and all monies have to be paid to Bus2Go by **17th August**.

**We look forward to welcoming you aboard very soon**

*Margo, Bus2Go Project Leader*

## Burglary Advice

THERE has been a recent increase in burglaries reported in the Blandford area. Please remember the following security advice.

- Always lock and shut doors and windows at night or when leaving the house, even if you only pop out for a few minutes.
- Make sure sheds and garages are locked and secure and all tools are put away. Fitting a strong padlock or alarm will also act as a deterrent to thieves.
- Do not leave bags, purses, keys or valuables on view near doors and windows. Laptops, games and satnavs should also be hidden from view.
- If you live in a shared house or block of flats, never let anyone in that you do not know.
- Mark your property with your postcode and display signs stating that your property is marked. By doing this, you can deter thieves as it makes it harder to sell your property on.
- Be a good neighbour – if you see anyone acting suspiciously in your road, call the police immediately.
- REMEMBER – some insurance companies will not replace stolen items if your home is left insecure at the time of the burglary.

If you see anything suspicious, call Dorset Police on **101** or call the free and anonymous Crimestoppers line on **0800 555 111**. These numbers are for non-emergency calls only.

If a crime is in progress or life is in danger, please dial **999**.



**All aspects of Tree Surgery undertaken by  
NPTC Surgeons**

**Commercial & Domestic  
Fully Certified & Insured**

- Re-Shaping
- Reductions
- Pruning
- Dismantling
- Section Felling
- Hedge Cutting
- Stump Removal
- Equipment Hire
- Land & Site-Clearance
- 24 Hour Emergency Call Out
- Free Estimates

**Quality Seasoned Hardwood Logs**

Loads at £70 and £150

Free Delivery throughout the area

Kindling & Wood Chippings Available

Hardwood and Softwood Planking

www.countytreeservices.com  
E-mail: info@countytreeservices.com

**Tel/Fax: 01258 837377**

Mobile: 07971 276980

# GRASSBY FUNERAL SERVICE



*Still a family run business,  
serving the local community  
since 1861*

CHAPEL OF REST

24 HOUR SERVICE

PRE-PAYMENT PLANS

**8 PRINCES STREET, DORCHESTER**

Tel: 01305 262338

Email: info@grassby-funeral.co.uk

**MEMORIAL MASONRY**

*Memorial Showroom at  
16 Princes Street, Dorchester*



www.grassby-funeral.co.uk

## Milton Abbas Sports U11 Cricket

**MILTON Abbas at home against Bradford Abbas.** Bradford Abbas batted first, they only lost two wickets and ended up with a score of 251. Milton Abbas batted, however they kept losing wickets and ended up on 226. Ben Holland had a great game with the bat and ball, scored 16 and took one wicket, Dudley Dodd was second top scorer on four and did well as wicketkeeper.

**U11 game away to Marnhull.** Well what a game it was, Milton Abbas batted first and got 258 for just three wickets, with Ben Holland top scorer again with 18. When it came to the bowling, Will Jeffery was the star man. In his first over, he took two wickets with his last two balls; the following over, he missed out on his hat trick but managed to get three more wickets in a triple wicket maiden; and his last over, he got 'just' one more wicket and another maiden. He finished with amazing figures of six wickets for just one run in three overs. Everyone else bowled well and we got 11 wickets in total with five maidens bowled, Jake and Oscar Kelly and Ty Stanton with one each, which is very unusual. Marnhull only managed 192, so a great win for the team.

### Monday 9th July 2012

We managed to beat the weather and played a home U11 game against Shillingstone.

Milton Abbas batted first and only lost two wickets and ended up on a score of 257, with Ben Holland top scoring, but everyone contributed.

Shillingstone's run chase started slowly and Milton Abbas bowled well and picked up early wickets, with Oscar Kelly getting two and also a great run out off his own bowling. Shillingstone's best batsmen came in as the last pair and batted well but fell 11 runs short.

A good game, but another great win for the boys, well played.

*Colin Chastey*

## A Darby Building Services Ltd



All Types of Building Work Undertaken;  
New Builds, Extensions,  
Structural Alterations, Kitchens,  
Bathrooms

Trackside Cottage ♦ Milton Abbas  
Blandford Forum  
Dorset DT11 0BQ

Tel: 01258 881506 ♦ Mobile: 0797 4260938

[adbsltd@gmail.com](mailto:adbsltd@gmail.com)

## Hadrian's Wall Walk

Sid Coe, George Legg and I continued our love of walking by doing the 86 mile Hadrian's Wall walk, which crosses England from Wallsend in Newcastle to Bowness-on-Solway. Much of the wall has disappeared, especially in Newcastle and the stretch from Carlisle to Bowness-on-Solway, but there is plenty of it left in the central parts of the walk to get a feel of the massive undertaking the Roman legionaries achieved.

Lots of the missing bits of wall were taken for building many of the houses in the towns and also used in the building of the military road.

We set ourselves seven days to do this, to ensure we had time to visit some of the Roman forts and mile castles on the route, and also some of the pubs on the way. We had a mixture of weather ranging from high winds and torrential rain all the way through to some sunshine at times. Sometimes we had all these in one day! Despite everything that nature put our way we all thoroughly enjoyed the walk, the history and our companionship.

We used B&B's, which had been pre-booked for us by the specialist company we selected to organise the trip and these were extremely good, but all different in their own ways. Many, because of their rural position, catered for evening meals and I must say the food they prepared was excellent.



The photo shows us at the formal end of the walk at Bowness, and the 'T' Shirts are by courtesy of my wife, Elaine, who thought we reminded her of characters from the 'Last of the Summer Wine' having an adventure.

To anyone contemplating a long distance walk in England I can recommend either Hadrian's Wall or the Coast to Coast (192 miles), which I did two years ago. Either will show you the beauty of this wonderful country of ours.

*Peter Anthony*

## Flower Festival at St. Andrew's Milborne

ON the last weekend in September, (29th and 30th), we are planning a flower festival with a harvest theme in St. Andrew's Church. The church will be open (as usual) each day from 9.30am to 5.00pm. On Sunday there will be a Benefice Service at 11.00am when people from the other three churches in the benefice will join us.

Coffee and cake will be available both mornings and cream teas in the afternoon. Entry is of course free but there will be a plate for contributions and anything you feel able to give will be gratefully received for church funds.

It is hoped that all members of the church flower arranging team will be taking part, but if there is anyone else who would like to help with the floral arrangements they would be most welcome. Please contact Pat Tribe on 837684.

*Pat Tribe*

A traditional village pub where families are made welcome

in

## Milborne St. Andrew

Lovely garden with a children's play area

Full menu available 7 days a week

Exciting and extensive children's menu

Excellent Sunday Roast 12.00–3.00pm

Separate Sports Bar

Sky Sports and ESPN

Pool and Darts

Function Room and Skittle Alley



— THE —  
**ROYAL  
OAK**



ROYAL  
OAK

### What's on in August

Saturday 11th – Willow weaving  
workshop from midday

Tuesday 7th – Bingo from 8.00pm

### What's on in September

Tuesday 4th – Bingo from 8.00pm

Friday 21st – Murder Mystery evening

Saturday 29th – Live music  
with Lisa Makk



Dog  
friendly

takeaway  
**menu**  
available

tel: 01258 837 248

DORCHESTER HILL  
MILBORNE ST. ANDREW  
DORSET DT11 0JG