

75P WHERE SOLD

Reporter

News and Views from around the area

Volume 5 Issue 7

July 2013

www.milbornestandrew.org.uk/reporter

Millborne St. Andrew

The Day of the Wheelies

See page 3



Ladies' Netball Update



LADIES of varying ages and abilities continue to meet Saturday mornings. We are doing well, most of us beginning to notice an increase in stamina! We have been busy oiling up rusty skills, brushing up on rules and learning cheeky strategies! We have an enthusiastic umpire whose previous netball experience has been, and will continue to be, beneficial to us.

If you are interested in playing netball, please come along to a training session. We welcome new ladies – come and give it a try! Only £1 a week – to help fund new equipment.

Please note **NEW** time Saturdays 9.30am–10.30am.
For further details contact Jane Williams 01258 839291.

Poppies taken from memorial



ON behalf of the Royal British Legion members in the village, I would like to express our disappointment that three crosses were removed from the war memorial over the Spring Bank Holiday, within 36 hours of them being placed there. The police were informed and, at their suggestion, a notice was placed at the memorial. To date there has been no further vandalism.

We place a cross on the memorial for any service personnel killed in action, or who have died as a result of serving. For every cross placed we make a donation to the Poppy Appeal which, together with other donations from Milborne, adds up to a considerable sum for a village of our size.

In spite of the theft, we were very pleased and heartened to find that someone in the village had found the time to leave flowers and a note at the memorial in memory of Drummer Lee Rigby. We would like to say to that person, many thanks for such a thoughtful gesture.

Peter Dow,
Village rep for the Royal British Legion

The views expressed in this magazine are not necessarily those of the **Reporter** team.

Deadline for the August/September issue is the 14th July

The editor reserves the right to edit or condense contributions

Note of apology

I WOULD like to apologise to **Mr Barry Bright of Milborne Properties** who kindly supported and sponsored last year's race night in the village hall. This company was missed from the list of donors when we gave our vote of thanks in the *Reporter* following the event. This was an administrative error and hope that this note of apology will go some way to show our appreciation of his support at the event.

Amy Tanswell
Milborne St. Andrew Committee Member Youth Club Rep.

Cream Teas at the Wednesday Club

ON Wednesday 5th June we enjoyed our annual cream teas at the Village Hall. The sun shone brightly and the scones, jam and cream were delicious. It was good to get together with friends and catch up. Some of us were lucky enough to win prizes in the raffle organised by Sheila Burton.



Our thanks to all the committee for a good afternoon.

Janet gave us the details for the trip to Exmouth on Tuesday 2nd July, which will be a great day out. Looking ahead to the August meeting, it has been decided to cancel the outing to Sidmouth and instead we will be having a lunch, a carvery and a cold dessert, at The Royal Oak on 7th August, 12noon for 12.30pm.

Looking forward to seeing you at both these events. *Lis Watts*

VILLAGE LUNCH

Open to everyone young and old alike

To be held at the Village Hall on
Saturday 27th July from 12.15 to 2.00pm
Wine or fruit juice

*Sausage and mash with vegetables,
Mixed berry strudel with custard
Coffee or tea and mints*

Vegetarian option available
£6.50 per head

Tickets available from the Computer Drop-In Centre
at the Village Hall from Friday 5th July
(10.00am to 12 noon)
or call Josie Wright any time for more information
or to reserve tickets on 839090

Advertise with the Milborne St Andrew *Reporter*

Distributed to approximately 500 homes 11 times each year

Full page £200.00 p.a. / £40.00 per issue
Half page £140.00 p.a. / £25.00 per issue
Quarter page £75.00 p.a. / £13.00 per issue
Eighth page £50.00 p.a. / £7.00 per issue
Back page £300.00 per annum

Community events at the Village Hall will be advertised free of charge
Other community events at half the above rates for half page or less

Advertising copy **MUST** be received by the 14th of the month

msa.reporter@yahoo.co.uk

Advertisers will also be listed in the Business Directory at
www.milbornestandrew.org.uk

Your *Reporter* Team

Janet Allen, Susan Cawley, Carole Fornachon,
Heather V. Hogg, David Payne, Ed Richards
and Josie Wright

Advertising: Ed Richards 01258 837907

Distribution: Janet Allen 01258 837551

General enquiries, news and features: David Payne 01258 837700

Treasurer and photography: Heather V. Hogg 01258 837392

Copy for the next issue **MUST** be received by the 14th of the month

Enquiries and copy to: msa.reporter@yahoo.co.uk

E-copy as .doc or .pub files, pictures as .jpg files please

Paper copy to David Payne at 7 Bladen View



Above: Bin day on the newly laid Milton Road.

Below: Food waste is deposited in a separate compartment using a hydraulic system on the new lorries.



THIS year's Dorset Historic Churches Trust Cycle Ride takes place on Saturday 14th September from 10.00a.m. until 6.00p.m. If you have not participated before the aim is to get sponsored for every church you visit during the day.

You can go either on a bicycle, walk, or on horseback, going on your own route and at your own speed. Get together with like-minded people and have an enjoyable few hours visiting some of the beautiful churches in Dorset.

Half the money you collect goes to the organisers, the Dorset Historic Churches Trust, and the other half to the church or chapel of your choice.

We are looking for volunteers to sit for an hour or so in our church to welcome visitors, sign their form and to offer them refreshments.

If you would like a sponsor form, to help in church, or for more information, then contact your local organiser, Pam Shults, 26 Stileham Bank or telephone 837203.

New waste collection service is wheeled out, but questions remain

THE new wheelie bin collection service has now been rolled out to include Milborne, with recycled and landfill waste being collected from households on alternate Fridays. Although Dorset Waste Partnership (DWP), the county-wide organisation responsible for the new service, has provided all residents with information booklets on the ins-and-outs of the collections, some debate and confusion still remains. Are the bins chipped with an ID tag? Can rubbish be put in bags inside the bin? Does the green-lidded bin get emptied into landfill like the black one? And so on.

So, do the bins have an ID tag? The answer from Bill Davidson, Head of Strategy at DWP, is a resounding "yes". "The bins do have a radio frequency ID (RFID) tag. We have always been very open with the fact that the bins have a unique ID", he told the *Reporter*. However, it is simply a device much like one in a library book – it contains no data, other than a unique number. This number is then linked to the property address in a database that is being built by the DWP. It's no 'spy-in-the-bin' or an affront to civil liberties as some sections of the Press have made out, he says.

At present, its purpose is to help avoid miscollections or to reunite lost bins with their rightful homes, Mr Davidson says. He gives a likely scenario, "Take garden waste collections – there may be 40 bins per street to be collected, but one may be missed for whatever reason. The driver will be alerted to this and so avoid missing the collection of a bin". Sending vehicles and staff out to specially collect bins cost the council "a fortune" up until now, so the RFIDs will help solve this problem and save money.

But what of their potential future use? Is there any plan to charge for collections? Mr Davidson says, "There are no plans whatsoever to charge per lift or 'pay-per-throw'" linked to weight, or either to incentivise recycling. He concedes that it is theoretically possible but it would be a very complex and expensive exercise, with retrofitting vehicles with hardware and the technology to do so. If, however, it was to happen at some point in the future, "you wouldn't be taken by surprise, there would be lots of debate in the media", he says. It would probably be driven by central Government, and it would be a nationally discussed issue due to its contentious nature.

On the question of cost, will the new service increase residents' Council Tax? "Obviously there is a cost at present", Paul Helms, a DWP spokesman said. "But this is a brand new service and it costs money to invest in infrastructure – new vehicles, the bins and everything else – to serve over 200,000 homes, but there will be long-term savings in things like less landfill." He went on to say that a third of our landfill is food waste, so DWP would rather be sending this to treatment plants than "digging holes in Dorset to throw rubbish into the ground. This underpins the whole system – cost and environmental performance go hand-in-hand." The brown food waste bins are collected every Friday, whether a recycling or black bin week.

After carefully sorting the correct recycled materials into their respective bins, it would be very annoying for a resident to find that the whole lot had been emptied into landfill. You may well have heard this in recent weeks, but Mr Helms says that this is, well, rubbish. "All recycled materials are hand-sorted from a conveyor belt", he says. The contents of the bi-weekly collections are "bulked up" at Blandford, and then transported by road to Shotton in north Wales where it is then sorted. That seems far away? "It does sound a long way, but we don't have the industrial capabilities in Dorset". He goes on to say that all the allied industries that process the recycled materials are in and around Shotton, so it makes sense to send there. The DWP request that food packaging is rinsed before putting in the green bin, but bagging is not necessary. But bags and liners can be used for general rubbish for landfill placed in the black bin.

The DWP advise residents to use the booklet and stickers that arrived with their new bins for information regarding what goes in which bin, or visit www.dorsetforyou.com/recyclefordorset. The team can be contacted on 01305 221040

Ed Richards

GERRY'S PLANTS

Shrubs, Perennials, Climbers,
Summer and Winter
Bedding and Baskets
Soft Fruit and Vegetable Plants

Come and see them at

12 The Rings
Milborne St Andrew
Tel: 01258 837386

A Darby Building Services Ltd



All Types of Building Work Undertaken;
New Builds, Extensions,

Structural Alterations, Kitchen,
Bathrooms

Telephone: 01258 881506

Mobile: 07974 260938

Email: adbsltd@gmail.com



Industrial
Virtual Private Networks
Events
Endpoint and Perimeter Security
Electrical Contracting
Equine Agricultural
Repair Services
Control Systems
Commercial Portable Appliance Testing
Firewall Security
Bespoke Control Systems
Wired and Wireless Networks
Structured Cabling
Intruder Alarms
Maintenance Contracts
Testing and Inspection
Infrastructure
Breakdown Services
Fire Alarms
Virtualisation
Domestic

Hustings Electrical Ltd

Est 1980

Hustings Electrical Ltd

Visit our website for more information www.hustingselectrical.com
Tel: 01258 837385 | Workshop: 01258 839052 | Mob: 07966 403965



GP Commissioning

What does this mean?

What do we spend the money on?

Who decides how the money is spent?

Will it improve services?

Dr Martin Longley will be presenting answers to the above questions on Wednesday 10th July at 5:00pm in the Reading Rooms at Milton Abbas.

This event has been organised by 'Patient Voice' to help patients understand the changing NHS.

Numbers are limited.

Therefore, if you wish to attend please contact Nigel Hodder on 01258 880229 or by email at nigel2749@tiscali.co.uk and register your interest.

Places will be awarded on a first come first served basis. If we are over-subscribed a further presentation may be arranged at a later date.

Summer news in Milborne's new allotments

IT SEEMS a bit dangerous talking about summer. Last year we talked about droughts and had rain for the next nine months or so. But it does seem as though the growing season has finally crept in. With our rabbit fencing doing its task (except when the latch on the gate doesn't catch, and the rabbits discuss whether to risk it or not!).

There is a shiny new trough at the top of the field, with a skilfully dug trench, sky blue piping, and a large gap in the hedge, which had to be inspected and passed; it was like sitting an exam, nerve wracking - but we passed! Wessex Water have now connected us up to the mains water. The next step will be to raise the funds to get a large trough and pipe it down to the fenced area.

The Smartest Scarecrow in Town

The half plot dedicated to community groups and children has now got the smartest scarecrow in Dorset, thank you to Jo Lovett and a gang of local children for its creation. He has a few plants and herbs at his feet, plus a row of hopeful sunflowers along the fence. If you have a burning ambition to let your children plant, but have no space, please let us know, we would love more people to use it.



A Community Digging Evening

A group of us got together one evening, armed with all the tools we needed, and have managed to help the holders that are struggling with digging, strimming and rotavating. It was done with good humour and a lot of laughter! And we enjoyed it so much we plan to do it again!!

Two "Ready to Go" Half Plots available

We still have two "ready to go" half plots available at £20 for the year (plus water costs), please contact us if you are interested (01258837575 or 0125883957). Other plots have been treated and will become available as our little working party manages to clear them.

Sue Gould



The enthusiastic allotmenters working party pictured next to the new trough. They redug the community plot, planted many donated flowers, and the boys sowed some spinach and radish as well as planting the sunflowers, and naming them!



Gardening Club news

The next meeting of the Milborne St. Andrew Gardening Club will be on Thursday 25th July at 7.30pm in the Village Hall. Our speaker is Ian Willis, He will be telling us about 'The Secret Garden at Serles House' - sounds intriguing!! All visitors welcome.

We do not have an August meeting at the Village Hall but members can enjoy our annual supper on 15th August. *Angie Nowell*

LOGON-WOODBURNERS LTD
SALES & INSTALLATIONS

20% DISCOUNT

ON STOVES FOR SUMMER INSTALLATIONS FROM MAY TO SEPTEMBER...BEAT THE WINTER RUSH !!!

WOOD AND MULTI FUEL STOVES

CHIMNEY & ROOF REPAIRS

FREE QUOTATIONS & FULLY INSURED

FLEXIBLE FLUE LINERS & RIGID FLUE SYSTEMS

ALL BUILDING WORK UNDERTAKEN

HETAS

WWW.LOGON-WOODBURNERS.COM

CALL STEVE GUSCOTT
M: 07733 477729 T: 01258 857848



THE BENEFICE OF PUDDLETOWN, TOLPUDDLE AND MILBORNE WITH DEWLISH
PART OF THE CHURCH OF ENGLAND IN THE DIOCESE OF SALISBURY

Look out for . . .

Instead of my usual reflection, I would like to draw your attention to some of the things that are happening in the coming months, and encourage you to take part.

These days most small villages with churches are part of a wider area under the care of one or more clergy. These are called benefices. While the loyalty of most people is to the church in their own village, we can all gain from sharing worship, fun, social activities and friendship with people in other communities. There are some things that we can do much better as part of a larger grouping than if we remain wedded only to our own church.

It is sad to hear people say, when there is a fifth Sunday in the month and we join together in worship, that they see it as a chance for a day off church, if the service is not in the village in which they live. The absence affects the whole community of the church not just the person who has stayed at home.

I would like to remind you about the trip to Lee Abbey in Devon in September (20th–22nd). This is a good opportunity to get to know people from the other village churches better, so that when we worship together at home, we see each other more as friends than strangers. Going away together can help build both faith and community. And let me remind those of you with children in Puddletown schools that we can offer you free child places. There will only be one service in the benefice that Sunday, as we would like to see as many people as possible with us in Devon.

We are also running a holiday club in the week beginning 19th August, which will be open to all children aged 5 to 11 (the current YR to Y6). This is something that the individual churches in our benefice would struggle to organise, since it needs a greater number of volunteers than any one of those churches could provide. It will be at St Mary's Middle School in Puddletown and run from Monday to Friday in the week beginning 19th August from 10am to 12.30pm. At £2.50 per child per day (buy 4 days, get the 5th free) this is an exceptionally good value experience for a week of the summer holidays.

That will be followed by our annual farm service at 10.00am on Sunday 25th August; this year we will be at Warren Hill Farm, courtesy of Wakley and Caroline Cox. And the day after is the Athelhampton Five Churches Fete. Please pray for sun!! We had a washout last year.

I look forward to seeing you at these gatherings. Please get in touch if you wish to know more about any of them.

With best wishes,

Sarah Hillman

Christian Aid Week 2013

THANKS to all who contributed or helped in any way with the collections for Christian Aid Week. Milborne St. Andrew raised a total of £427.74.

The Car Wash raised £95.50 and we are grateful to Don McLeod (Halcyon Motors) for matching the total collected from Wetherby Close.

Last year's total was £286.02.

Eric Austen – St. Andrew's Church co-ordinator for Christian Aid

Church Contacts

Priest in Charge Sarah Hillman 01305 848784
E-mail: sarah.c.hillman@tesco.net
Associate Priest Sarah Godfrey 01258 839067

Church Wardens

Milborne St. Andrew **Dewlish**
John Wright 01258 839090 Jim Burg 01258 837466
Sue Britton 01258 837218

www.milbornestandrewchurch.org.uk

Benefice Office

Marion Bishop 01258 839190 puddletownadmin@fsmail.net

CHURCH SERVICES July 2013

THURSDAY 4TH JULY

12 noon Lunch-time Communion Milborne

7th July – Trinity 6

9.30am Parish Communion Tolpuddle
9.30 Family Communion Milborne
11.00 Holy Communion Puddletown
with Sunday Seekers and Crèche
11.00 1662 Morning Prayer Dewlish
6.00pm Carnival Songs of Praise Puddletown Square

14th July – Trinity 7

8.15am 1662 Said Communion Puddletown
9.30 Parish Communion Tolpuddle
9.30 Parish Communion Milborne
11.00 Family Service Puddletown Church Room
11.00 Family Communion Dewlish
3.00pm Thanksgiving for a child Puddletown

THURSDAY 18th July

12 noon Lunch-time Communion Puddletown

21th July – Trinity 8

9.30am 1662 Said Communion Milborne
10.30 Martyrs' Festival Songs Tolpuddle
of Praise
11.00 1662 Morning Prayer Puddletown
11.00 Holy Communion Dewlish
5.00pm Martyrs' Methodist Service Tolpuddle Chapel

SATURDAY 27th July

3.00pm Holy Matrimony Puddletown

28th July – Trinity 9

9.30am All-Age Worship Tolpuddle
9.30 1662 Holy Communion Milborne
11.00 Family Communion Puddletown
11.00 Family Service and picnic Dewlish

MORNING PRAYERS (Monday–Thursday 8.15am, Saturday 9.00am)

Monday – Puddletown Tuesday – Milborne
Wednesday – Tolpuddle Thursday – Dewlish
Saturday – Puddletown

Flowers – w/e Saturday

29th June and 6th July– Eve Richardson
13th July and 20th July – Helen Pugh
27th July and 3rd August – Elaine Anthony,
Kath Gipps and Hilary Daffern



Do you need a lift to church?

If you have difficulty getting to church or need transport when the Benefice Service is at another church, we can arrange transport for you. Please contact John on 839090

Send your letters, stories and pictures to the **Reporter** at msa.reporter@yahoo.co.uk or give to a member of the team.

See the **Reporter** each month in colour on www.milbornestandrew.org.uk/Reporter/index

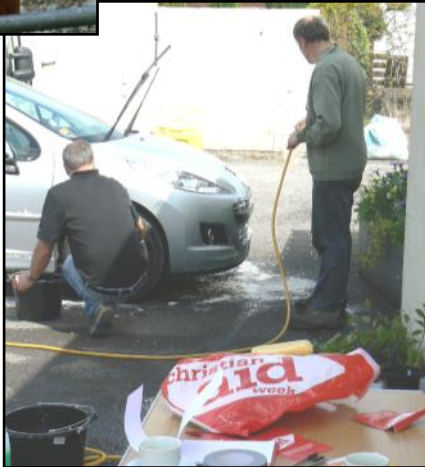
St. Andrew's Notes

JUST when I thought things were settling down for a quiet month, the church had one of the busiest days I have known. Last Thursday morning started with our builders arriving to put the finishing touches to the roof repairs that have taken 14 days rather than



the scheduled five (yes, there was a lot more rot than the architect could see), closely followed by a team of seven from Community Payback who did a considerable amount of clearing up in the churchyard. At noon we welcomed members of the Christian Fellowship Group to coffee followed by our monthly midweek Communion which was a great gathering. At the end of the

afternoon our gallant church cleaners retired home exhausted after dealing with all the dirt from the building work, and we finished the day with a rehearsal for next week's wedding. At one stage I thought we were going to take delivery of our new 'wheelie bins', but we were spared that for a day or so.



We had a successful collection for Christian Aid. Many thanks to Eric Austen for all his hard work organising it, and to all those who contributed.

Our collections of non-perishables for the Dorchester and Blandford Foodbanks have started well and we have sent a box to Dorchester. We should have a boxful for Blandford by the end of June.

If you are reading this before *Roger's Rant* weekend, come and hear them sing at the **benefice service at Milborne at 10.00am on Sunday 30th June** and again that evening at their **concert at 5.30pm**. Everyone will be most welcome - as at all our regular

100 CLUB WINNERS

Draw Date - Tuesday 4th June 2013

1st place	£100	Eva Stockley
2nd place	£50	Sandra Northover
3rd place	£5	Jon Riddle

The next draw is at 8.00pm, in The Royal Oak, on Tuesday 9th July 2013

Everyone is welcome to attend

**New members always welcome. Contact
June Maitland 837235 or
Denise Sanderson 837049**

Payments may be made by a cheque payable to
MSA FC and Church 100 club

*Please speak to Denise Sanderson, Jenny Balcon
or June Maitland for information.*

services. We are also looking forward to helping with the benefice Holiday Club which will be running each morning from August 19th to 23rd at Puddletown Middle School.

John Wright

United Benefice Services

AT the most recent of my regular meetings with the churchwardens and Sarah Godfrey, a discussion was held about the timing of the United Benefice Services, which usually happen on the fifth Sunday of the month. There is a variety of opinions about this across the churches, so we have decided for a trial period to hold all United Benefice Services at 10.00am. Please try it out and make any strong views for or against known to me or the wardens. The general feeling was that on such Sundays, three out of four congregations are already doing something different from usual by attending another church, so that a different time would not be as confusing as it might at first seem.

Write the dates and times in your diaries now. The next two are: 25th August at Warren Hill Farm and 29th September at Tolpuddle at 10.00am.

Thanks.

Sarah

Dewlish Church notes

THE recent Coffee Morning and Sale in Dewlish raised £230 for Christian Aid. We are most grateful to all who helped and supported it, and special thanks go to Mrs Margaret Groves for all her hard work involved in organising it.

On Sunday 28th July we shall be holding our **Annual Picnic Service** on the Village Green in Dewlish, starting at 11.00am. Everyone is welcome. Please bring a plate of food to share. Drinks will be provided.

Comments about church services please!

At our Church Council meeting Sarah H. asked us whether we were happy with the format and content of our services. If anyone has any comments to make, please would they let us know before our next meeting at the end of August.

The annual Bank Holiday fete at Athelhampton House will take place on Monday 28th August, and Dewlish will once again be manning the jams, pickles and produce stall. We shall be most grateful for any donations.

Daphne Burg

Online social justice community

WE are starting a list of people who would be interested in participating in a new group. The aim is to circulate people, probably once a month, with information about a Social Justice issue, from abroad or in this country with possible action people might take such as writing a letter or sending an e-mail to express concern. If you would like to be included in this community please send me your e-mail address. You will be able, of course, to withdraw at any time by e-mailing me.

As an example -

You may have heard recently about PRISM, the information-gathering program that the US government has been using to spy on the internet activities of American and British citizens. If you want to express your concern go to <http://www.thepetitionsite.com/524/115/021/protect-uk-citizens-privacy-from-us-surveillance/> and sign the petition.

Eric Austen - St. Andrews Church Social Justice co-ordinator

The *Reporter* team will be having a short break in August so any copy for the August/September issue should be received no later than **14th July**.

Please send copy via e-mail to msa.reporter@yahoo.co.uk or give to a member of the team.



Milborne St. Andrew First School



Learning together, playing together;
all for one, one for all

School News

THIS year we have been delighted to work with Sandy and Edward Elgar in connection with the Enaikishomi School in Kenya, which was established in memory of their daughter who died in 2005. Following their first visit to our school we arranged a Kenya focused week. Classes learnt about the environment in Kenya, the importance of energy and water conservation and the local habitats.



During the week all the children took part in a Beat the Goalie competition with Mr McDermott in goal to raise money for the school. The donations received were forwarded to the school to enable them to purchase some goalposts to use alongside the footballs donated by the school earlier in the year.

During May our football and netball teams enjoyed taking part in the Prince of Wales School fun day competitions. Our football team was able to show off their new football kit, very kindly arranged and sponsored by DCM Tyres through Mr and Mrs Evans. Thanking Mr and Mrs Evans in writing Charlie and Rowan noted that "not only is the new kit very nice, but that the team are very lucky".

As well as football kits being donated we have also taken delivery of three wooden benches in the playground thanks to a very kind donation of the wood from Lottie Padwicke-Barratt's parents and further generosity from Mr Eddie Butterfield who turned the raw material into the finished product with his steam driven saw mill at his workshop in Bere Regis. Many thanks to them and to the extra labour involved in getting them into place. Helena and Louie have sent thank you letters on behalf of the school council who asked for



new benches noting. *The three benches look really home made and steady, not like the old ones! Everyone is using them at play time to sit down and they are complimenting on them.*



The week of the 10th June was our health week. We encouraged everyone to walk to school and eat plenty of fruit and vegetables, with children collecting reward stickers for their efforts. The Tuesday afternoon was our sports afternoon. With the help of our specialist Action Van coaches and the middle school sports leaders everyone enjoyed the events around the field. On Wednesday the children prepared healthy snacks for the whole school shared indoor picnic in the afternoon and on Thursday local gym instructor Maggie Curtis taught all classes.

After many years working with the school this month we said farewell to Mrs Mary-Ann Featherstone before she starts the next chapter of her family life in an idyllic setting in Scotland. Mary-Ann has worked with the school on many art and wildlife projects and has supported the Trees for Dorset project through the school. She has also run the popular after school wild art club with help from



volunteers including Mrs Clarke. At a special assembly the children presented her with cards, read poems, sung and Mrs Featherstone received a gift from school to remember friends in Dorset.

CONTACTS

If you require any information about the school, including admission details or would like to arrange a visit please contact Mrs Pugh in the school office.

Headteacher: Mr Neil McDermott

Secretary, School Office: Mrs Helen Pugh

Chair of Governors: Mr Kevin Connolly

FOS Chairman: Sarah Clark

e-mail: office@milborne.dorset.sch.uk

website: www.milborne.dorset.sch.uk

Tel: (01258) 837362 Fax: (01258) 837170



HEALTHY PETS LTD

Come and see us for full dietary advice
plus friendly service

Full range of foods, treats and toys
for your faithful friends
Specialist in wild bird food

**DELIVERIES TO YOUR
AREA EVERY FORTNIGHT**

website - www.healthypetsblandfordltd.co.uk

Unit One, Milldown Business Centre
Shaftesbury Lane, Blandford, DT11 7TD

e-mail - dave.healthypets@btconnect.com

Tel: 01258 459066

OLD BARN DENTAL PRACTICE LTD



Mr John Woodward BDS. (Hons.) U. Lond. LDS RCS

GDC No: 42991

**Modern, cosmetic and restorative
dentistry in a friendly atmosphere**

Manor Farm Road Bere Regis

Wareham Dorset BH20 7HD

Telephone: 01929 471023

Email: oldbarn@tesco.net

Beauty and Massage Therapy

For all of your beauty and massage therapy requirements
contact Jo at

Spoilt Rotten

Treatments for both ladies and gentlemen include Swedish Massage, Waxing, Manicures, Pedicures, Makeup, Facials, Airbrush Tanning and many more procedures.

Fully insured and qualified treatments

Telephone 01258 837014

Stag House, The Square,
Milborne St Andrew, DT11 0JF



Onyx Landscaping and Fencing

Landscape Gardening
Fencing

Patios and Drives

Tree and Hedgework

Garden/Scrub Clearance

Garden Maintenance

Tel: 07787 953106 01258 880604

www.onyxlandscapes.co.uk

Call or email anytime for a friendly professional service



P J AIKEN LIMITED

INDEPENDENT FINANCIAL ADVISERS

4 Trinity Street, Dorchester, Dorset DT1 1TT

Telephone: Dorchester (01305) 266676

Fax No: (01305) 251569

advice@pjaiken.co.uk

Specialists in:

Financial Planning

Investment Advice

Inheritance Tax Planning

Pensions and Retirement Advice

Life Assurance

Health Protection



Security is Strength

P J Aiken Limited is authorised and regulated by the Financial Services Authority



Darren Jenkins

Floor Fitter

For all your Home and Business Flooring Requirements

- Carpet
- Vinyl
- Karndean
- Amtico
- Safety Flooring
- Commercial Flooring

To arrange a free, no-obligation quote:

Home • 01305 787297

Mobile • 0786 355 4536

Email • djenkinsflooring@gmail.com

Proud members of

Checkatrade.com
Where reputation matters



Oak motorcycle rally 2013

Malcolm and Helen Carpenter would like to say a huge personal "thank you" to each and every one of you for your support this year. Your hard work, donations of tombola prizes, monies and time are very much appreciated. £827.82 was raised for the Cancer Care Unit of Poole Hospital.

More about the rally will be in the next publication of the *Reporter*.
Once again, thank you. See you all next year.

Malcolm and Helen Carpenter

p.s. Well done Tracy for being so brave! Will you do it again?

Christmas in June – at the WI

IT may well be June and the so-called 'height of summer', but we were delighted to welcome Bonny Sartin to give us a feel for a 'slightly alternative Christmas'. Bonny is a founder member of the well-known Dorset folk-singers, The Yetties. His family have lived in Dorset for over 350 years, and he is passionate about the county. Bonny entertained us royally with songs, poems and stories, covering alternative aspects of our Christmas celebrations, with recitals from the poet, William Barnes, and excerpts from Thomas Hardy novels and the Punch magazines. There were carols exalting the '12 days of turkey', the making of homemade wine from an old WI recipe, as well as a parody on being breathalysed. We were encouraged to join in the chorus where appropriate, and in this were ably assisted by Roger Harrall (*thank you, Roger*).

We then took the opportunity to reminisce and share some of our own Christmas traditions, past and present. A cheesy CD played even now whilst eating Christmas lunch, some very strict mums making the children stretch out their present-opening over days not hours, and one very hard-hearted mum (who shall be nameless) of a Father Christmas 'non-believer', whose tale is much too pitiful to bear repeating. Perhaps best of all the recipient one Christmas of a gift of a lengthy plastic line. "Something in the clothes line" apparently! *You all know who you are!*

Roll on summer, and we look forward to our summer outing to the RNLI College in Poole on Thursday 29th August at 11.00am. A visit to the Spinnaker Tower, Portsmouth, on Friday 26th July. The Literary lunch at Athelhampton House, with guest speaker Jane Robinson, a Social Historian specialising in the study of women pioneers, on Friday 23rd August includes lunch and access to the gardens.

Our summer supper will already have taken place and hopefully has been blessed with good weather. A reminder: all jars for our jarbola stall at the Milton Abbas Street Fair should be with Pat Shipton by 11th July please. They have to be labelled and priced ahead of the event.

At our next meeting on Thursday 11th July, Mrs D Edwards will talk about 'My experience working as a stunt artist'. Please do join us as this will be our last meeting before the summer break. *Pat Bull*

Greenways Tree Care

and
Garden Services

(fully insured)



Felling
Reductions
Pruning
Stump Grinding
Hedges
Lawn Maintenance
Turfing
Strimming
Garden Fencing
Chippings delivered

Tim Moore

01258 837124

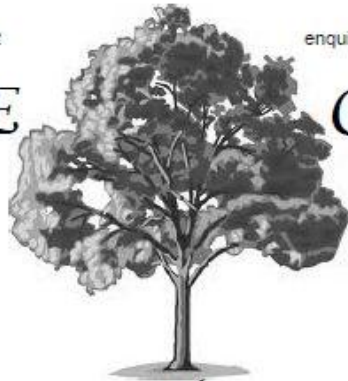
07968 154708

20 years experience
Free estimates and advice
Dewlish, Dorchester

Tel: 01258 837352

enquiries@oakpub.co.uk

THE OAK



at Dewlish

At The Oak at Dewlish, we pride ourselves in serving a regularly-varying range of real ales. We also want you to enjoy every mouthful of our food. This is why we strive to bring you delicious dishes that combine the best of English pub food, with ingredients from the local farms and nearby producers.

We have 4* self catering accommodation and 2 newly furnished ensuite B and B rooms.

www.oakpub.co.uk



Southfield VETERINARY CENTRE

Providing First Class Care
for all your Pets



**Pet Health Plan Available
Now Find us on Facebook**

South Walks Dorchester DT1 1DU

Tel: **01305 262913**

info@southfieldvet.co.uk www.southfieldvet.co.uk



**24 Hour Emergency
Service**



Selling a car? Can't face the ...



hassle?

We buy cars, bikes, campers and vans for cash at a time to suit you. Trading in elsewhere? We can usually offer more ... Halcyon Motors, now based in Milborne St. Andrew, is a small, friendly business and we will happily come to you. Impartial advice comes free!

Buying? Visit www.halcyonmotors.co.uk to see "warts and all" descriptions and photos of our current stock. Warranties with all cars. Part exchange welcome. Call Don MacLeod 01258 839209 or 07782 189555 (Mon - Sun, 8.00am - 9.00pm)

AJV

COMPUTING

IT Services for the Home & Small Business

Virus and malware removal • E-mail & broadband setup
PC & Laptop repairs & upgrades • Wireless networking
Data recovery • Installations • Troubleshooting

*No callout charge • Microsoft certified
Over 20 yrs experience • Prompt & friendly service*

Tel: 01929 480529

Mobile: 07710 835905

www.ajvcomputing.co.uk

Queen Thorne LANDSCAPES



RHS CHELSEA SILVER GILT
www.queenthorne.co.uk

Purveyors of the Finest Gardens

01935 850848

**Extend your home and maximise
your outdoor space**

Consultation
Design
Construction
Ground Preparations
Water Features
Turving & Seeding
Planting
Renovations
Wild Flower
Meadows
Lawn Care

As seen on the **BBC**



JULY 2013



SATURDAY, JULY 6th 2013

**CHRISTCHURCH
TOWN CENTRE**

£11.00 return—bus only

SATURDAY 20th JULY 2013

**SALISBURY MARKET, CATHEDRAL
AND**

WILTON HOUSE

Bus £10.50 return

Contacts:

Margo 01258 837749/ Ron 01258 839234

bus2go@btinternet.com

Grants given by the Parish Councils of
Milborne St Andrew & W.Stickland



A Mother's War by Yvonne Collinson Heath

This book is an autobiographical memoir written by the mother of James Collinson, who died at Deepcut shortly after his 17th birthday. I cannot imagine the pain and grief which the loss of a much-loved son can cause, but I can imagine that being treated with disdain and dishonesty by his employer, by the police, and by successive Governments could only make that pain worse.

Mrs Heath (who has remarried since James's death) tells her dreadful story from the heart, but in a very matter-of-fact way. I can only admire her bravery as she and her former husband fought the system to find out the truth of what happened to her son against a background of incompetence and unpleasantness ('Mrs Collinson, there was one bullet and one body. Draw your own conclusions'.)

The book makes painful but compelling reading, and one cannot ignore the logic of her appeal for a Public Enquiry into what happened to her son, and to Cheryl James, Sean Benton and Geoff Gray, who also died from unexplained gunshot wounds at Deepcut.

She states that she, like the other parents, wants to know the truth about how her child died. I believe that she is a little naive to believe that a Public Enquiry would actually find the truth about anything – we have recently seen both Leveson and Hutton fail to get to the bottom of very serious questions.

The politicians' response, that an enquiry would affect recruitment adversely, surely holds no water given the effect of recent redundancies and outsourcing on applicants to join the Army.

Mrs Heath names people who she feels let her and her family down – Geoff Hoon who announced live on TV that there would be no Public Enquiry, having given the families the opposite impression, Nicholas Blake who wrote 'the Deepcut Review' (much ridiculed in *Private Eye* at the time) which contained errors of fact and of interpretation, Lt. Col. Laden, in loco parentis at the time of James's death, who blamed James and his parents for 'ruining his life' and who read a newspaper throughout the Coroner's Inquest, and a succession of Government ministers who promised support when in opposition, yet executed u-turns when in a position to actually do anything. She also tells how the families fell prey to a conman who claimed to be a ballistics expert who would prove what had happened to their children, whose laboratory was a tatty old caravan, and whose 'knowledge' proved less than helpful.

I hope that none of these individuals suffer the sudden and violent loss of a child, let alone any ensuing hiding of evidence, changing of stories and rank incompetence, which were inflicted on the Collinson family.

I do understand that the training regimes within the British Army have changed now, that the atmosphere of violence and sexual misconduct has disappeared from Deepcut along with it being renamed, and hope that never again will a 17-year-old boy meet a violent, unpleasant and sudden death which no-one wants to explain. If we can believe that, we can believe that Mrs Heath's suffering has not been in vain.

Susan Cawley

**Old Washing Machines, Cookers,
anything metal
removed free
of charge**

REGISTERED CARRIER



Please call: 01258 837100



**CHRIS PERRINS
CHIMNEY SWEEP**

**FIREPLACE, CHIMNEY, FLUE, WOODBURNER
INSTALLATION AND MODIFICATION**

www.csweep.co.uk

Also:

- HANDYMAN ▪ INSIDE/OUTSIDE PAINTING
- GARDEN MAINTENANCE ▪ HEDGE TRIMMING/LAWN MOWING

Enquiries welcome, call: 01305 849470 / 07824 698109





COUNTY TREE SERVICES



All aspects of Tree Surgery undertaken by
NPTC Surgeons

**Commercial & Domestic
Fully Certified & Insured**

- Re-Shaping
- Reductions
- Pruning
- Dismantling
- Section Felling
- Hedge Cutting
- Stump Removal
- Equipment Hire
- Land & Site-Clearance
- 24 Hour Emergency Call Out
- Free Estimates

www.countytreeservices.com

E-mail: info@countytreeservices.com

Quality Seasoned Hardwood Logs

Loads at £70 and £150

Free Delivery throughout the area

Kindling & Wood Chippings Available

Hardwood and Softwood Planking

Tel/Fax: 01258 837377

Mobile: 07971 276980

FISH 'N' CHIP FRIDAYS


INCLUDING: FISH 'N' CHIPS,
A GLASS OF WINE, HALF A BEER OR
SOFT DRINK. 5.30PM-8.00PM

**EIGHT
POUNDS
FIFTY PENCE
PER PERSON**

The Martyrs Inn, Tolpuddle

www.themartyrsinn.co.uk 01305 848249

BAR & RESTAURANT MENUS AVAILABLE




Outdoor Theatre Pride *and* Prejudice

Performed in the Garden

Friday 23rd August 7.30pm by

Chapterhouse Theatre Company.

Gates open 6.30pm, picnics welcome
book online or phone 01305 848363



www.athelhamptonhouse.co.uk

Blanchards Bailey LLP

incorporating John Foster-Pegg

Solicitors

Do you want a quick and painless move?...
try speaking to us before you speak to an agent



FREE MEETINGS IN
Blandford, Dorchester,
Shaftesbury or Stalbridge

Call: 01258 459361
w: blanchardsbailey.co.uk



LOGS

Quality Seasoned Hardwood Logs

Small Load £70 and Large Load £150

Free Delivery throughout the area
Kindling & Coal Household/Smokeless

Tel/Fax: 01258 837377

Mobile: 07971 276980



A.J. LAKE

Painting & Decorating

Interiors & Exteriors

FREE quotes

25+years experience

References available

No job too BIG or SMALL!

Tel: 01258 837 687

Mob: 07989 817 826

Weldmar Sahara Trek

THANK YOU to all that turned out to support us at the Moroccan buffet night on Thursday 13th June at The Royal Oak. The night was a great success with almost 100 people attending over the evening to enjoy the amazing food and to give our fund a welcomed boost; we raised £125 from the raffle alone!

Your support was very much appreciated.

Nicky Dyer and Tim Joslin

Al Fresco Eating

Gazpacho

THIS traditional summer dish makes a brilliant summer soup. You can serve it in individual bowls for lunch (this quantity would do four for a main meal) or in smaller glasses as a tapa. Just remember that it needs to be chilled when you serve it.

Prep time 25minutes, plus chilling

Cook time 5 minutes. (if using ham)

Do ahead The soup can be made up to a day ahead. Cover and chill.

Ingredients

800g (1lb 12oz) ripe tomatoes, halved.

1 yellow pepper, halved, deseeded and roughly chopped.

Half a small red onion, peeled and roughly chopped.

2 cloves of garlic, peeled.

200g (7ozs) blanched almonds.

50g (2ozs) slightly stale white bread, crusts removed, roughly crumbled.

510ml (18fl oz) tomato juice.

Extra virgin oil.

1 tablespoon sherry vinegar.

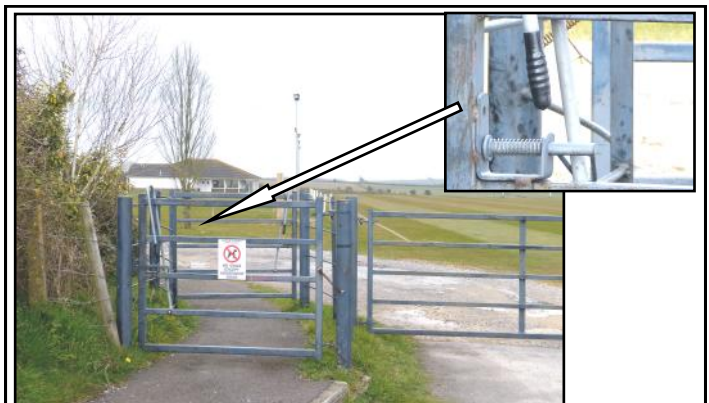
A few thin slices of Serrano Ham or pata negra (optional).

Sea salt/Black pepper.

Method

Put all vegetables, garlic, almonds and bread in a food processor and blitz until as smooth as possible. Pour in the tomato juice, about six tablespoons of the oil, the vinegar, sea salt and pepper and give it another whiz around. Put in the fridge for a couple of hours to chill. When it is lovely and ice cold, give it a taste and adjust the seasoning if needed. If using Serrano ham or pata negra, tear the slices into smaller pieces and fry with a drizzle of olive oil in a hot pan for about a minute until nice and crispy. Scatter these over your gazpacho then finish with a drizzle of extra virgin oil.

Carole Fornachon



Did you identify this?

Last month's photograph was at the entrance to the Sports Field, Lane End.

Congratulations to Maureen Butler for being the first with the correct answer.

Try your luck this month on page 27

Send your pictures, news and articles to the Reporter at msa.reporter.yahoo.co.uk or give to a member of the Team

Community Contacts

Please let the *Reporter* know if any of these details change

More information about many community organisations can be found on www.milbornestandrew.org.uk

Councils

Floods

A354 problems contact the Highways Agency	0300 1235000
ha_info@highways.gsi.gov.uk	
Dorset Direct	01305 221000
dorsetdirect@dorsetcc.gov.uk www.dorsetforyou.com/reportroadproblems	
Environment Agency Floodline	0845 9881188
South West Highways hello@swhitd.co.uk	01404 821500
North Dorset District Councillor	Emma Parker 01258 881631
	Jane Somper 01258 471089
Parish Council – Dewlish	Clerk: Sandra Sims 01258 837132
	Chair: Andrew Booth 01258 837284
Parish Council –	Clerk: Colin Hampton 01258 837011
Milborne St. Andrew	Chair: Jenny Balcon 01258 837121

General – Adult

Computer Drop-in Centre	Rose and Ed Frost	01258 837921
Ladies Group – Dewlish	Judith Bridgen	01258 837157
Memory Lane Swing Band	Gilly Pink	01258 837695
M.A. Neighbourcar	Nigel Hodder	01258 881709
Wednesday Social Club	Margaret Evans	01258 450518
Women's Institute	June Maitland	01258 837235

General – Youth

Hazelnuts out-of-school club	Hazel Barrett	01305 848588
Ladybirds (Playgroup)	Liz Dyer	01258 839117
Scout Group	Mike Mullett	01258 837114
Under 5's Group – The Busy Bees	Hayley Davis	07919 156578
Youth Club age 8 – 14 years	Lianne Summers	01258 839081

Police

Police – Non-emergency contact		101
Community Beat Officer	PC Dave Mullins	101
Safer Neighbourhood Team	PC Dave Mullins and PCSO Luke Goddard	101

School

Milborne 1st School		
Headteacher:	Neil McDermott	01258 837362
Chair Governors:	Kevin Connolly	
Friends of School Chair:	Sarah Clark	

Special Interest

Bellringers	Pip Howell	01258 837329
Bridge Group	Laurie Benn	01258 837720
Food and Wine Society	Julie Johannsen	01258 839004
MSA Allotment Society Chair:	Jo Lovett	01258 837957
Secretary:	Sue Gould	01258 837575
MSA Friendly Art Group	Elaine Anthony	01258 837089
MSA Gardening Club	Richard Lock	01258 837929
Milborne Players	Roy Sach	01258 837033
Modern Sequence Dancing	Brian Webber	01935 812347
Ranters' Folk Session	Roger Harrall	01258 837371
Round Robin Ramblers	Ian Bromilow	01258 880044

Sport

Abbey Swimming Club	Pat Cowan	01258 880601
---------------------	-----------	--------------

Archers – Crossways	Sheila Ryall	01258 837504
Athletics – Junior	David Pearson	01258 837057
Badminton	David Payne	01258 837700
Circuit Training and Pilates	Claire Barratt	01929 554999 or 07946 732769
Cricket – Dewlish	Elaine Kellaway	01258 837696
Cricket Club – Milton Abbas	Andy Smith	01258 880310
Cricket – Junior (U11 – U13)	Andy Smith	01258 880310
Football – Adult	Matt Hall	07846 262717
Football – Reserve Team	Tom Lane	07786 156335
Football – Under 11s	Marie Hayter	01258 837241
Ladies Netball	Jane Williams	01258 839291
Running Group	Anne-Marie Pearson	01258 837057
Skittles – Dewlish	Frank Ross	01258 837366
Sports Club		
Chairman:	Phillip Hayter	07830 125610
Bookings:	Dean Hamilton	01258 837370
Table-tennis	Sandra Shannon	01258 837253
Tap Dancing for Adults	Libby Goodchild	01305 268029
Tennis	Dennis Nelson	01258 837734
Tennis (Members Secretary)	John Sanderson	01258 837049
Yoga	Sue Chapman	01305 848053

Village Hall

Dewlish		
Chairman:	Alex Carter	01258 837312
Secretary:	Alex Carter	01258 837312
Milborne St. Andrew		
Chairman:	Paul Tasker	01258 837590
Booking Secretary:	Sandie Sach	01258 837033

Les Misérables (12)

shown by 'Milborne Movies'
at Milborne St. Andrew Village Hall
on Friday 12th July 2013 at 7.30pm

Les Misérables is a deeply powerful film, that tells an enthralling story of broken dreams and unrequited love, passion, sacrifice and redemption – a timeless testament to the survival of the human spirit. It is rich with raw feeling, the grittiness of life in 19th-century France and the conflict between right, wrong, and the concept of redemption.

The film follows the story of ex-convict Jean Valjean (Hugh Jackman), a proud and decent man imprisoned for stealing bread to save his sister's family from starving. After his release from prison, Valjean breaks his parole, but he is granted a second chance by a kind bishop. He then moves from place to place throughout France, trying to live an honest life, while ruthless policeman Javert (Russell Crowe) hunts him relentlessly. Valjean meets the broken-spirited Fantine (Anne Hathaway) and promises to care for her daughter Cosette (Amanda Seyfried) as Fantine is about to die, and as a result of that promise finds his own life completely changed. The physical strength of this movie is impressive: an awe-inspiring and colossal effort, just like Valjean's as he lifts the mast at the beginning of the film. You can almost see the movie's muscles flexing and the veins standing out like whipcords on its forehead. This film has won three Oscars and four BAFTAs above all else, perhaps, the film is about three things. First, love both sacred and profane, with its ability to transform and transcend. Second, our need to fight for social justice in a cruel world, that too easily undermines and diverts it. Third, it is about holding on to hope in the most desperate conditions.

The village hall and bar is open from 7.00pm and the film starts at 7.30 pm. Tickets £3.00 can be obtained on the door.

Community Events Diary

Add your event to this diary by contacting the **Reporter** – tel: 01258 837700 or email: msa.reporter@yahoo.co.uk

July

- Tuesday 2nd** **Wednesday Club** Outing to Exmouth – see page 2.
Saturday 6th **Ladies Netball Practice** Village Hall MUGA 9.30am.
Bus2Go Christchurch Town Centre – see page 13.
- Tuesday 9th** **100 Club Draw** The Royal Oak, 8.00pm. New members always welcome – see pages 7 and below.
- Wednesday 10th** **GP Commissioning** Dr Martin Longley will be presenting answers at the Reading Rooms at Milton Abbas 5.00pm – see page 5.
- Thursday 11th** **WI** talk by Mrs D Edwards “My experience working as a stunt artist” Village Hall 7.30pm – see page 11.
- Friday 12th** **Les Misérables** Milborne Movies Village Hall 7.00pm – see pages 16 and below.
- Saturday 13th** **Ladies Netball Practice** Village Hall MUGA 9.30am.
Tuesday 14th **Reporter** deadline for copy. Please send your stories and pictures to msa.reporter@yahoo.co.uk or to Millie at millie@milbornestandrew.org.uk
- Wednesday 17th** **Parish Council** Village Hall 7.30pm.
Saturday 20th **Ladies Netball Practice** Village Hall MUGA 9.30am.
Bus2Go Salisbury Market, Cathedral and Wilton House – see page 13.
8th Leigh Food Festival and Classic Car/Bike Display £2 adults children under 15 free 10.00am–4.00pm.
- Thursday 25th** **Gardening Club** “The Secret Garden at Serles House” with Ian Willis Village Hall 7.30pm – see page 5.
- Saturday 27th** **Ladies Netball Practice** Village Hall MUGA 9.30am.
Village Lunch Village Hall 12.15pm. – see page 2.
Milton Abbas Street Fair.

Regular Bookings at the Village Hall

- Ladybirds Playgroup** Monday–Friday 8.30am–1.00pm MH (term time only)
Beavers Monday 6.00–7.15pm MH (term time only)
Scouts Monday 6.00–8.00pm CR/MH
Players Monday 8.00–10.00pm MH
ABC Line Dancers Tuesday 7.30–10.00pm MH
Cub Scouts Tuesday 5.45–7.15pm MH (term time only)
MSA Friendly Art Group second and fourth Wednesday 7.00–9.00pm CR
Wednesday Club first Wednesday 2.00–4.00pm MH
Gardening Club fourth Thursday 7.30–10.00pm MH
Karate Thursday 5.10–6.40pm MH
Village Hall Committee third Thursday every two months 7.30–10.00pm
Women’s Institute second Thursday 7.30–10.00pm
Coffee, Cake and Computers Friday 10.00am–12.00 noon CR
Youth Club 8–14 years every other Friday MH (term time only)
Ladies’ Netball Saturday 9.30–10.30pm MUGA
Village Lunch last Saturday of the month 12.15–2.30pm MH
Sequence Dancing third Saturday 7.30–10.30pm MH
Artsreach Events – look out for the posters.

Check Village Hall Notice Board for any other events that are one off for you to join in with.

Regular Bookings at the First School

- Pilates** Monday 7.00–8.00pm (term time only)
Yoga Tuesday 6.15–7.45pm (term time only)
Badminton Wednesday 7.00–9.00pm (term time only)
Circuit Training every Thursday 7.00–8.00pm

July at the Sports Club

- The Busy Bees** Under 5 Group from 9.30am to 11.30am on Thursday term time only. Contact Hayley Davis (07919156578).
- Table Tennis** from 7.00pm to 9.00pm every Monday evening. Contact Sandra Shannon Tel. 837253.
- Milborne Mini Soccer**
Training on Wednesdays from 5.00–5.45pm for under 6s and 5.00–6.30pm for all other age groups.

Please let the Reporter know if there are any alterations to this list or you would like something added.

Milborne 100 Club

- 1st PRIZE £100 2nd PRIZE £50
3rd PRIZE depends on number of members paid
For only £1 a week you can have three chances for a prize in every draw (minimum £5.00)
Please make cheques payable to
MSA FC and Church 100 Club
For information contact:
John Sanderson Football Club 837049
June Maitland Church 837235
Denise Sanderson Collector 837049

Milborne Movies
Friday 12th July 2013
at 7.30pm
Doors and Bar at 7.00pm
Supported by Viridor CREDITS
HUGH JACKMAN RUSSELL CROWE ANNE HATHAWAY AMANDA SEYFRIED
Milborne St. Andrew Village Hall
Tickets £3.00
FIGHT. DREAM. HOPE. LOVE.
Les Misérables
THE MUSICAL PHENOMENON

Ladybirds get ready for school

WE have entered the final half term of the school year with lots of activities going on. Most importantly for our older children it is the final few weeks with us at Ladybirds.

We have had a few visits to school and reception teacher Miss Wittman and class room assistant Mrs Greening have called in to get to know the children in preschool.

The photo shows some of our children with their buddies from the current reception class making webs outside with Miss Wittman. This followed on from a story about a spider spinning a

web. The Ladybirds children had walked up to school with staff and confidently entered the building and joined the schoolchildren for the story and activity.

We are proud of them and are happy that they are now ready for the next stage of their education.

The younger children had the opportunity to play at Ladybirds without their older friends and it was nice to hear that new pairings of children were happening indicating new friendships for next year.

Other activities this half term include a visit from ZooLab with some of their exotic creatures, a trip to the SeaLife Centre, Weymouth and of course our end of term party.

If you have a child who will be 2½ years old before July 2014 please phone or call in for a registration form soon as we are planning for next year already!

Liz Dyer

Boot sale a success for Ladybirds

The recent table top and car boot sale at the village hall, in aid of Milborne Ladybirds Playgroup, was a great success. The sale on the 8th June was organised by the Ladybirds committee and raised just over £200 for the group's funds. Thank you to everyone who came along and supported us and for all who helped with setting up on the day. We appreciate very much all those that took a car pitch or table in the hall.

A big thank you to all the fabulous bakers who provided delicious goodies for the cake stall and our ice cream seller who worked non-stop for the afternoon!



Milborne Ladybirds Playgroup

Registered Charity no. 1087441

We are a friendly community preschool with highly qualified, enthusiastic staff who help children to achieve their potential through fun activities

Opening times;

Early birds 8.30 to 9.00 --- Sessions 9.00 to 12.00 --- Lunch Club 12.00 to 1.00



Contact Details:

Jayne Hamilton (Secretary) 01258 837260

Liz Dyer (Playgroup Manager) 01258 839117

www.milborneladybirds.org.uk

Ofsted Registered no. 217717





buckingham healthcare

Rollators & mobility equipment



We are a local professional healthcare company that make and sell a range of products from aids to daily living through to medical equipment.

We are managed by Qualified Healthcare Professionals with years of nursing and therapy experience in the NHS.

Buckingham Healthcare also offer occupational therapy consultations with a qualified professional.

For more information & advice on any of our equipment or services please contact us on:

01258 839 122 or via email:

info@buckinghamhealthcare.co.uk

Alternatively visit our website below

We can deliver locally and to surrounding areas.

Commodes & Toileting Equipment



Aids to daily living



chair **raisers**

Specialist Cutlery & dining



knork

Full range of bathroom aids



fold **easy**



buckingham **caddy**



Helping people to help themselves

www.buckinghamhealthcare.co.uk

Chris Buckingham
LLB BSc SROT

P.N. GRAY

ELECTRICAL CONTRACTORS

AGRICULTURAL - DOMESTIC - INDUSTRIAL
ESTABLISHED OVER 50 YEARS

ALL ELECTRICAL WORK UNDERTAKEN FROM
INSTALLATIONS TO MINOR WORKS
INSPECTION AND TESTING - REWIRING AND
MAINTENANCE

FULLY ENROLLED WITH THE BRITISH STANDARDS
INSTITUTE FOR SELF CERTIFICATION AND
BUILDING REGULATION PART "P"

GIVE US A CALL FOR A FREE NO OBLIGATION
QUOTATION OR JUST SOME FRIENDLY ADVICE

TELEPHONE: 01258-837354/01258-837270
MOBILE : 07774-838851



E-MAIL : sharongray@talktalk.net

Sohani Gonzalez

B.A., M.C.H., R.S.Hom

Registered Homeopathic Practitioner with over
28 years experience in Sussex, London and Dorset

- Nutritional and Dietary advice
- Allergy Testing

Homeopathic medicine is over
200 years old. It is popular world-
wide because of its effectiveness,
safety and its ability to treat all
kinds of physical and emotional
problems.



Consultations available in the Blandford Forum
and Dorchester areas

Please call for an initial appointment

01258 839043

www.sohani-homeopathy.com

MMSA CARS LTD

Fine Used Car Sales in the Heart of Dorset
We Sell Cars • We Buy Cars • We Will Find You The Car You Want

The Garage, Dorchester Hill
Milborne St. Andrew, DT11 0JG

NEW! Rear Parking Sensors
Colour Coded to your car
FULLY FITTED for just £129(inc VAT).
Call to book an appointment!

For details of our current sales stock, to arrange a
test drive or just to ask advice

Call Jon on 07557 104150
or 01258 837030

www.MSAcars.co.uk



What a difference a week makes



Cheselbourne Theatre Club



OUR autumn/winter programme is already with current members, who will be anticipating a bill of fare that ranges from a Broadway play, which became an Oscar-winning film, through Restoration comedy to the frothy dessert that is panto. If you are interested in becoming a new member and would like a programme please contact our secretary (Jane Dawson 01258 882154).

We organise tickets and transport to Salisbury Theatre. So, as the nights draw in, enjoy several evenings at the theatre (with several glasses of what you fancy) and no parking problems. We pick up at Cheselbourne – Melcombe Bingham – Ansty – Hilton – Milton Abbas – Winterborne Whitechurch – Blandford – Pimperne. We may be able to make other stops on our route if necessary.

Our first outing is on **Monday 16th September** when we will be going to see *On Golden Pond*. This family drama by Ernest Thompson was adapted to become the award-winning screenplay for the 1981 film starring Jane and Henry Fonda. Their difficult father and daughter relationship off screen was said to have been reflected in the film. Tickets (£23) are available from John Widdowson (01258 837791). Please book and pay as soon as possible but by 15th July at the latest

First impressions

By Josie Wright

THE connecting train in Pisa is not only late but crowded with homecoming workers. When we finally arrive at Santa Maria Novella we have to leave the station womanhandling our luggage down an impressive and steep flight of steps.

Half an hour later we leave our hotel for a stroll. I am still tired and disorientated after the journey, but the heat of the day has been cooled by an earlier cloudburst, so the evening is fresh and pleasantly warm, and I start to relax into the magic that is Florence.

We pass the market where the stallholders are packing away both their leather goods and their stalls, carrying it all on their backs like exotic nomads. Then we wander alongside the Arno for a while, crossing by the Ponte Vecchio, its many jewellers' shops along the bridge defying the laws of gravity as they seem to stretch unsupported over the water. Eventually we arrive at the Piazza della Signoria and sit on some steps in a quiet corner. Even at half past seven in the evening the stone is still pleasantly warm through the seat of my jeans.

We pause to look around that sublime junkyard of statuary. There are lions rubbing shoulders with gods and bronze warriors jostling cheek by jowl with towering granite fountains. The piazza is so large that even at this, the height of the tourist season, it isn't crowded; people stroll along looking around. I had expected to hear Italian, but it sounds like the Tower of Babel as French, Dutch, and Chinese rise up in a multilingual hum.

The daylight starts to fade. The dusty, mellow setting sun washes the surrounding roofs, and their terracotta tiles magnify the fading light in ochres and golds. In the days to come there will be so much more – paintings, frescos and gardens. But the tantalising aromas of mysteriously different cooking from scores of outdoor cafes bring me back down to earth as hunger entices us on towards a comfortable eatery.

The *Reporter* team will be having a short break in August so any copy for the August/September issue should be received no later than **14th July**.

Please send copy via e-mail to msa.reporter@yahoo.co.uk or give to a member of the team.

Parish Council Meeting 19th June

MR ROBERTS (Architect and Town Planner) gave a short talk on the Milton Abbey Project which is looking for funding for repair and conservation work to the Abbey and initiatives to improve awareness of the building's heritage by making it more accessible to local people. In 2016 many events will be held in the UK to celebrate the tercentenary of Capability Brown's birth. Milton Abbey's landscaping is one of the finest examples of his work in the country. The plan is to provide exhibition space with information about the development of the Benedictine Monastery and the Abbey. Toilets and a coffee shop will be included. The goal is to increase understanding and awareness of the Abbey and landscape and to increase the value of the Abbey to local communities and schools as well as other organisations. People with thoughts and ideas should contact Mr Roberts (01258 880313 or mail@tra.uk.com) as he is developing the application which will be submitted shortly to the Heritage Lottery fund.

NDDC Representatives can provide a list of charities licensed to put bags through doors requesting items for sale.

We are encouraged to join a community initiative to reduce speeding at a cost of £300 in addition to the money we pay for policing. It would result in three-time speeders receiving a letter from the police rather than a prosecution.

The Allotment Society has a website to which a link is available on the village website. Water has been installed at the site and more allotment holders are joining.

Village Hall users are asked to ensure that chairs are stacked correctly on the racks after use, to avoid them falling on other people.

BT are due to address the problem of the noisy manhole cover at the bottom of Blandford Hill.

The developer of the land next to Bramble Cottage has applied for a Judicial Review of the decision in the High Court. Neighbours of the site are watching the situation carefully.

The report of the flooding meeting held on 9th May was summarised. Some action is being taken. DCC officials are to be invited to return in the autumn and say what they have done

The report of the condition of the village's public seating and benches was discussed. Funding was approved to make repairs at minimal cost.

Speeding in Milton Road – Council was asked to raise this again with local police due to the likelihood of another fatal accident. Dangerous driving happens particularly in the morning and afternoon 'rush hours'. People are asked to use the 101 number and the police website to report speedy and dangerous driving at these times. Highways Department to be asked to add a number 30 to the road painting when it is reinstated and also to request traffic calming measures along Milton Road.

Susan Cawley

Local small-ads

Small ads of less than 30 words from local, private advertisers are published **free of charge**

For Sale – Flymo electric lawnmower. £30.00. Tel: 837190, evenings only.

For Sale – CABERG flip top m/cycle helmet with inner sunvisor silver size M £60. Chris Nowell 837543.

For Sale – NITRO m/cycle helmet silver size L £30. Chris Nowell 837543

For Sale – SHORT m/cycle boots by AKITO S 7 / 41 £15. Other M/cycle leathers, gloves, etc. Phone Chris Nowell 01258 837543 or e-mail canowell76@btinternet.com

Free – child's metal climbing frame with slide attachment for garden use. It has been very well loved, the material tent canopy needs replacing. Currently disassembled. Tel: 07913266230.

For Sale – Cane conservatory suite (2-seater settee and two chairs in brown). £20 ono. Buyer collects. Tel: 01258 839090.

For Sale – Making a home office? Collection of desk top, drawer and shelf parts. Any offers. Tel: 01258 839090.

Mucky Boots Dorset



Pet care service

Dog walking

Pet feeding/home visits

If you're out working all day or going away for a break, don't worry about the cats, rabbits, dogs...

I can help keep your pets happy in their own home.

Experienced animal lover; most pets welcome.

Fully insured and CRB checked.

Tel: 07816 031280

Email: Julie@MuckyBootsDorset.co.uk

www.MuckyBootsDorset.co.uk

CHRISTIAN FELLOWSHIP GROUP IN MILBORNE

We meet at Swiss Cottage on Thursdays
for

COFFEE AND BISCUITS

EXPLORING THE BIBLE, INFORMAL
DISCUSSION AND PRAYER

Last meeting before summer break – JULY 4th at 10.15am

Please contact Chris and Angie Nowell for details
01258 837543 or canowell76@btinternet.com



designer Gardens

Professional Garden Designer - designing and creating beautiful gardens and landscapes



Creative and practical designs to suit all styles of garden



Project management from design to completion



Construction by experienced quality landscapers



Planting schemes and border designs

Maureen Lock
16 Huntley Down
Milborne St Andrew

www.designergardens.biz

t: 01258 837929 m: 0778 660 8776 e: maureen@designergardens.biz



Blandford · Dorchester · Shaftesbury · Sherborne · Weymouth · Wimborne



Dorsetlettings

.co.uk

Dorset's leading letting agent

Firmly rooted in rural Dorset

Established in Milton Abbas in 1984 and proud to have been letting property in the surrounding area for over 28 years

at the heart of the community

01258 452444



4 West Street, Blandford, DT11 7AJ
blandford@dorsetlettings.co.uk

In need of a Window Cleaner?

Darren and Sarah

for a friendly and reliable service

Clear Vision

Fully insured for complete peace of mind

For that clearer vision just call:

01929 462273 / 07704 656777

or email: clearvision1996@hotmail.co.uk

Domestic and Commercial

Gutters Downpipes Facias Soffits

Conservatories Flash Roofs



Dorset Carpet Care

cleaning with care

Dorset Carpet Care is a local, family run business specialising in the cleaning and restoration of carpets, rugs soft furnishings and stone or tiled floors, in homes and businesses throughout Dorset.

We use various technologies including the latest truck-mounted hot water extraction system that can clean deeper and more effectively than other methods.

We belong to the NCCA and IICRC, which means we are fully qualified, honestly priced and our services come guaranteed.



- ✓ hot water extraction deep cleans
- ✓ removal of stains and smells
- ✓ stain protector application
- ✓ treatments for allergies and pests



Call Andrew or Joanne
on 01258 837092

www.dorsetcarpetcare.co.uk



Bus2Go motors into summer

SCHOOLS OUT – Intergenerational outings. Thursday 25th July. Lions Youth Brass Concert, 2.00–4.00pm Free entry – Corn Exchange, Blandford

Bus2Go will be operating a service through the villages of Milborne St. Andrew, Winterborne Whitechurch and Winterborne Stickland and Blandford £6.50 return. We have reserved 30 tickets for the concert on a first come first served basis.

Perhaps you would like to go to the market in the morning, have lunch and attend the concert in the afternoon. Please contact Margo 01258837749 or Ron 01258839234 for further information

Saturday 27th July We have a stall at the Milton Abbas Street Fair. Come and say hello and join the ‘charabanc outing’ taking you on a journey to villages in the stunning county of Dorset.

Wednesday 15th August visit to Sidmouth Donkey Sanctuary

Wednesday 28th August visit The New Forest

More details next month

Following the AGM, we should like to give grateful thanks to Michael Hopper for kindly auditing our first year accounts.

Margaret Kirk

Advertise in the *Reporter* and get results

This publication relies on advertisers to pay for all production costs. If you reply to one of our advertisements, please mention that you saw it in the Milborne St. Andrew *Reporter*

GRASSBY FUNERAL SERVICE

David Grassby ~ Peter Grassby ~ Andrew Fooks

Still a family run business,

-serving the local community since 1861

Office and Chapel of Rest
8 PRINCES ST,
DORCHESTER

Tel. 01305 262338 (24 Hours)

email: info@grassby-funeral.co.uk



MEMORIAL MASONRY

*Memorial showroom at
16 Princes St, Dorchester*

Golden Charter
Funeral Plans 

www.grassby-funeral.co.uk



The Hambro Arms Milton Abbas

Milton Abbas Street Fair Weekend

26th – 28th July 2013

Beer Festival

From the Friday evening at 6pm our beer festival will begin. 8 different ales to try. The Festival will run all day on the Saturday and Sunday lunch

(If there is any left!!!)

Live Music

On the Friday night we will have Hambro favourites Alto Duo, one of the most popular bands in Dorset. They play an extensive range of live music that caters for all

Curry Night

On the Saturday night, after the Street Fair, come and relax. We will be offering a choice of curries with all the traditional compliments.

All you can eat for only £13.95.

Sample Menu

Starters

Broccoli and stilton soup with micro shoots and crusty bread
Peppered smoked mackerel pate, dressed mixed leaves and toast
Pork, apricot and pistachio terrine with real ale chutney and toast
Crab rilletes wrapped in cold smoked trout with a baked lemon dressing, toast and micro shoot salad
Pan fried scallops with pea and black pudding purees and a Parma ham crisp

Salads

All salads are available as either a starter or a main course

Hambro Caesar salad of romaine lettuce, herb croutons, parmesan, and anchovies (add chicken)
Prosciutto ham salad with olives, tomato and caper berries
Goats cheese with a walnut crumble, baby mixed leaves, pickled beetroot, pear and toasted pumpkin seeds (v)
Pan seared tuna loin with boiled egg, green beans, new potatoes, sun blushed tomato and salad leaves

Mains

Braised and rolled leg of hogget with butternut puree, dauphinoise, asparagus tips and red currant jus
Rump steak with confit tomato, field mushroom, hand cut chips, red watercress and pink peppercorn sauce
Dressed Portland crab with shaved fennel, samphire and sun blushed tomato salad, buttered new potatoes and roasted garlic aioli
Pan roasted corn fed chicken supreme, with linguini carbonara
Mushroom, tarragon, onion and garlic risotto with morelle essence

Pub Classics

Trio of sausages with black pepper mash and red onion gravy
Breaded plaice with hand cut chips, peas, tartare sauce and lemon
The Hambro spicy beef burger with smoked cheddar cheese, pickles, tomato chutney, hand cut chips and dressed salad leaves

There is also a lunchtime lighter bites menu and a selection of homemade desserts. There is always a traditional lunch available each Sunday

Tel 01258 880233 www.hambroarms.com

WOODS

(DORCHESTER) LTD

Funeral Directors

Established in Dorchester since 1878

Monumental Masons

AVAILABLE 24 HRS A DAY

Paul R. Gawler M.B.I.E. Dip.F.D. M.B.I.F.D.

Pauline J Guy Dip.F.D. M.B.I.F.D.



DORCHESTER 01305 250425



Your local Safer Neighbourhood Team



PCSO 5389
Luke Goddard



PC 2186
Dave Mullins



PS 0581
Matt Chutter



PC 2201
Rich Barnes



PCSO 5412
Rich Mullins

How to contact your team Telephone: 101 If a crime is in progress or life in danger dial 999

Email: blandfordruralnorth@dorset.pnn.police.uk blandfordruralsouth@dorset.pnn.police.uk

Follow us on Twitter: @BlandfordSNT Find us on Facebook: Blandford Safer Neighbourhood Go to: www.dorset.police.uk

Save the date!

BACK by popular demand Milborne St. Andrew Village Hall would like to announce that there will be another Race Night held in the village hall on the 12th October 2013 so please pop a note on your calendar or in your diary as I know a number of people missed out on coming last year as we notified you all too late!

We look forward to seeing you there! The evening will take the same format as last year with all races and prizes being kindly sponsored and donated by our local and loyal businesses.

Amy Tanswell

Tried Windows 8 yet?

TRICKY, different? Of course you don't actually need help but if you are experiencing a few teething problems then why not come down to Coffee, Cake and Computers on Friday mornings. We don't pretend to know all the answers but often so many computer problems can be helped by sharing experiences and knowledge. 10.00am-12 noon at the Village Hall Committee Room. No charge for help given and delicious home-made cake and coffee/tea available as well!

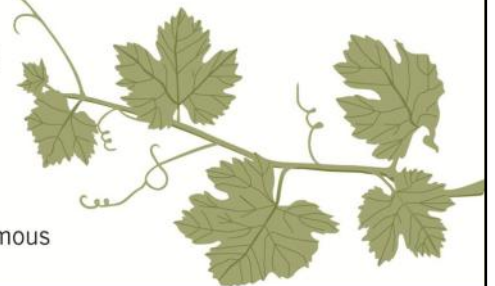
Rose and Ed Frost

Heathcote House

GUEST
ACCOMMODATION
Tel: 01258 837219

Heathcote House is a lovely Grade II listed guest house right in the heart of Milborne St Andrew. We offer a warm welcome and friendly service, all rooms have king size beds, en-suite bathrooms and are tastefully refurbished to a very high standard.

- Aga cooked breakfast served in the conservatory under an old grape vine.
- Guests drawing room with big comfy sofas and log fires in the winter.
- A secluded garden with delightful seating areas.
- The perfect place from which to explore Dorset's unspoilt countryside and famous Jurassic coast a few miles away.



Heathcote House, Milborne St Andrew, Dorset DT11 0JG. Website: www.heathcotehouse.co.uk



TOWN AND
COUNTRY
ECO

- Domestic Plumbing & Bathroom Installation
- Solar PV & Solar Thermal Installation, Servicing & Repairs
- Wood Burner & Flue Installation
- Biomass

For a friendly & professional service please call Matt Andrews

01258 839250 • 07966 963183
DEWLISH, DORCHESTER



Large
Beer
Garden

Eleven
En Suite
Letting
Rooms



The Fox Inn Ansty

Private Parties Welcome

Function Room Available

Ansty Dorchester Dorset DT2 7PN

www.anstyfoxinn.co.uk
E-Mail: fox@anstyfoxinn.com



Forum Sales & Lettings



Your local and independent agent...
renting and selling properties in your
area - Call now for a free valuation.



01258 459600

www.forumsalesandlettings.co.uk



Find more firms you can trust at
www.buywithconfidence.gov.uk

FLAMECARE

Nat. Gas & L.P.G. Plumbing & Heating Engineers

Our services include.

Boiler breakdowns, repairs & replacements.

Regular maintenance, repairs & installation of all gas appliances,

Gas safety certificates and inspections.

Power flushing and system cleansing.

General plumbing, cylinder and immersion replacements.

View our details on the **WHICH** website or contact us anytime on:

01258 837430 or 07831137313.



Reg No 116862



Flame Care



Flame Care

Ask Millie

– your problems solved



In response to last month's problem of the hard working and early rising couple with a dog barking late at night in next door's garden.

Millie says –

I've sought advice from a local vet and a dog trainer who both agree that the dogs should easily adapt to being trained to go out slightly earlier in the evening. Adult dogs with no health problems can be let out at 9.00pm and will be fine until the next morning. Also they suggest letting the dogs out individually as this will minimise barking. Now all the couple has to do is mention this to their neighbours. Perhaps the neighbours read the *Reporter* and the problem is already solved?

Dear Millie

What will happen about the people who continue to put all their household waste in one bin after the new recycling system starts? Will the bins be checked? Will

there be any sanctions for people who don't bother recycling? At the moment my neighbour puts out four black bin bags every Wednesday and never puts out anything for recycling.

Millie says –

Many people, in the past, have taken all their recycling, including bottles and cardboard, to the most convenient recycling centre and therefore haven't needed to use the roadside service. You can't assume that your neighbours aren't doing their bit. I emailed NDDC and received this response-

If people do not wish to recycle they can put all their rubbish into the one household bin, however, the crew will only take one bin's load a fortnight, and will not take any side rubbish. The lid on the bin has to be fully closed, if there is rubbish placed on top meaning the bin cannot close, that bag will be taken out and left behind.

Dear Millie

With the new wheelie bins coming soon and not wanting to throw anything away, is there anybody locally or an

organisation that will take such things as: silver paper, bottle tops, the packages you get your pills in, tetra packs, green bottle tops, polythene?

Millie says –

Any suggestions anyone?

Next month's problem

Hi Millie

It's summer time again and every year we have the same annoying problem, we light the barbecue and look forward to a peaceful relaxing time in the back garden but within seconds our neighbour starts using his electric hedge trimmer, his garden strimmer or his lawn mower and we have no peace at all. What do you suggest?

Questions for Millie and further responses can be dropped through the letterboxes of any of the *Reporter* team or emailed to millie@milbornestandrew.org.uk

View the *Reporter* each month in colour at www.milbornestandrew.org.uk/Reporter/index

Weather report from Pluvius data

THE figures show that with 64mm we had average rainfall in April, though last year we had more than three times as much in the month. This May rainfall was 60.5mm which was 13% higher than last year and 9% higher than average. So far this year we have had 448mm of rain which is 21% more than last year. The average temperature in April was 8.22°C, about the same as last year, but May was 11.98°C, 1.4 degrees cooler than last year. *Glacialis*

A Good Read by Shirley Dunkley Rescue by Anita Shreve

THE American novelist Ann Tyler and Anita Shreve have much in common. Both set their books in identifiable familiar territory; Tyler in Baltimore, Shreve in New England. Both explore the lives of ordinary citizens coping with the problems and tragedies of daily life. Family relationships loom large as do the changes wrought by the passage of time; both hold our interest and keep us turning the pages with considerable narrative skill. Yet, while Tyler seems universally loved Shreve seems more divisive, maybe because she can sometimes use an 'unreliable' narrator, so all is not as it seems.

Rescue is the story of a good man (never as fascinating as one who is flawed!) called Peter Webster who works as a paramedic in an Emergency Rescue Team in a small town in Vermont. Whilst still on probation in the job, he responds to a road accident involving a young woman, Sheila, and falls in love with her. Peter and Sheila marry and have a daughter, Rowan, but Sheila is an alcoholic. When Rowan is only two years old, Peter sends Sheila away to protect their daughter. With his parents' help he brings her up on his own. Fifteen years later, and now a senior paramedic, Peter is having problems with Rowan who threatens to follow in her mother's footsteps. When Rowan has an accident, Peter seeks out Sheila to try to help their child.

The title poses the question 'Who rescues whom?' who is the victim and who the perpetrator? Peter is a straightforward, good man but he deprives his daughter of her mother when he banishes her. Sheila is the one in need of rescue but ultimately her daughter's rescuer. If you have been put off Anita Shreve in the past, do try this book – there are no tricks, I promise.

Macular Degeneration

THE DAY I realised I needed more light to read, I thought that old age was here along with the stiff knees. But after eye tests I was told I had macular degeneration – this is very common apparently. The macular is the central area at the back of the eye and it starts to deteriorate in some of us as we get older. Eventually central vision is lost. There is, at the moment, no cure, but its progress is usually very slow and I have lost no vision as yet. In my case it is genetic; my mother was diagnosed several years ago and her sight is now severely affected. It is being realised what a widespread condition this is going to be as we are an aging population and research is on-going for a possible cure. I have found attending Macular Society meetings with my mother has been very informative and helpful. We have talks on the condition and progress on research. There are also all sorts of aids and help, financial and advisory. Some people feel very vulnerable at the thought of going blind, especially if they are alone – our sight is so precious.

I'm sure you all have regular eye tests – they're free after a certain age. If you have any fears about your eyesight and would like to know more about the Macular Society please contact Carole on 01258 837908 or me on 01258 839090.

Josie Wright



Can you identify where this is in Milborne?

Be the first to send your answer to msa.reporter@yahoo.co.uk or give to any member of the *Reporter* team (*Reporter* team members can be found on page two).

No prize, just a bit of fun.

Answer in the August/September *Reporter*.

Remember you can always see the *Reporter* in colour at www.milbornestandrew.org.uk/Reporter/index

Have you met . . . Maureen Lock

YOU may well have met Maureen Lock – it could have been out walking her three Belgian Shepherds or it may have been when she redesigned your garden. You may even have witnessed her during an impromptu stage performance of wine tasting notes, in song. More of that later. As a *Reporter* reader, you will of course have read her horticultural musings and advice in her monthly feature, *In Your Garden*.

Maureen lives in Huntley Down with Richard, having moved there in August 1999. She runs the successful garden design business, *designer-Gardens*, fittingly from her own garden, in an office nestled in its verdant borders. From here she tackles projects, from



Maureen grew up in Cambridge with her parents and younger brother and went to school in the city, then college. The river played a big part in her life growing up – she part-owned a punt on the River Granta and would often spend leisurely afternoons

small-scale courtyard designs to acres of garden with a host of challenging landscaping issues. It was the latter, surprisingly, that was to get her garden design career under way.

Almost immediately after completing the last of four years' of study, Maureen landed the "massive contract". The owners of a country house in Dorset had entrusted her with redesigning nine acres of garden. "It was fantastic for my first project to get that. I project managed the whole thing – the ground workers, the landscapers, building the tennis court, walled gardens and huge greenhouses, all the irrigation work, a three acre wild flower meadow. We brought in massive mature trees, installed a 100m ha-ha with dry-stone wall and even had to have an archaeological dig by experts." The project took over three years and the breadth of experience it gave Maureen was invaluable. "So this started me off on my gardening – though I'm not a gardener as such, as many people think; I'm a designer," she says.

This is a long way from her previous working life, both geographically and metaphorically. Before life in Milborne, Maureen had worked initially for Philips Mobile Radio, based in Cambridge but involved European travel every other week. As international sales account manager, her territory was Spain and Portugal, with some of Scandinavia thrown in too. A normal working week could mean a flight to Madrid for meetings, on to Barcelona the next day, Lisbon the next, and then home to Ipswich ready for a commute to Cambridge the following day.

Her department was responsible for police, fire, military and ambulance radios and "meant meeting very senior officials", she says, "staying in the best hotels imaginable and eating in the best restaurants". Being a woman in a male-dominated industry – and in very macho countries – was unusual for the time. She remembers well an important demonstration of radio communications and meeting with the Lisbon bus company, a contract worth over £1m to her company. The equipment was designed to keep tabs on the buses as well as providing passenger information. At the meeting to seal the deal, Maureen was the only woman present – and the Portuguese company had about 14 representatives there. When she gave the price Philips sought for the contract, she was met with outrage of Mediterranean proportions. "'Get out! Get out!', they screamed" she said. Her contingent left and flew back home, only to be summoned by the bus company's chief executive the next day. The theatrics of the

day before were forgotten and a deal was forged, albeit only slightly lower. It was quite a coup for Philips and it transpired that the client's board had been most impressed with Maureen, so much so, that she was presented with two paintings. She says of her Iberian counterparts, "At first they thought they could walk all over me, but got to know that they couldn't."

and evenings with a bottle bobbing behind the boat and a picnic aboard. Her punting prowess would come in handy years later when, representing Philips, she hosted some high ranking US military and RAF officials in Cambridge. Wanting the full city experience, a punt was hired and off they set. However, it became apparent that none of the visitors had the faintest idea how to actually punt, so Maureen finally said, "Give it to me, I'll show you how to do it!" Which she did – and surprised and impressed the generals.

Life continued to be centred on the city until she left Philips after 15 years there. She was then living in Ipswich with Richard, having met him at a trade show in Glasgow in 1987. But the long commute and days persuaded her to seek local work to even up her work-life balance. She started work at Eastern Electricity, working at first with one of the directors, until he asked her to set up a marketing and communications department – within a year she had 13 people working for her. Again, travelling regularly, she was flying to Houston and Boston for work on the company's new energy trading department. After four years at Eastern, she was poached by a web design company, working on their marketing and communications.

It was around then that Maureen and Richard decided to move on. They both loved Dorset, passing through regularly on visits to friends in Crewkerne. They just happened upon Milborne when they started looking for a home, loved the village and bought their house off-plan. Then she decided to embark on a new direction, but one which had been a passion since a child – horticulture. Two years at Kingston Maurward were followed by a year at the Arts Institute in Bournemouth and one final year at the Garden Design School in Painshill Park, Surrey. That she had made the right choice was confirmed early on, when working part time at a nursery. She says, "I thought I was in heaven; I wasn't travelling anywhere, I didn't have to wear a suit – I could turn up in jeans and wellies and I could get dirty. I used to think – 'if my old work colleagues could see me now' – it was so different, so different."

Maureen's mum, Pauline, then moved to Milborne a few years later to be closer to her daughter – you may well have met her too, walking her terrier, Ruby.

What's the best thing about Milborne? Everybody's friendly. When you meet people you can pass the time of day, everyone seems like your neighbour, even if you don't really know them, you stop and have a chat. *What's the worst thing about the village?* If there's anything, it's

probably some people's attitudes. I'm used to being around people from different nationalities and faiths and I don't like prejudice. Also, the resistance to change – you have to go forward to survive.

Who would be your fantasy dinner date? Colin Firth (*without hesitation!*), coming out of the water in his wet shirt – and he'd have to sit there throughout dinner in it!

What is your proudest moment? Probably getting second place at Crufts with Chloe last year. I've been showing at Crufts over the last 15 years – and I haven't missed a year for the last five – and I've never been placed, so that was wonderful. Also, I'm very proud of getting a distinction in my RHS horticulture certificate – I was the only one in the class to do so.

What's your most embarrassing moment? Oh, there are a few! Well, being thrown out of that meeting in Lisbon is definitely one. *And one when you weren't sober, perhaps?!* Well, one that has gone down in the annals of the Food and Wine Society history was a wine tasting

evening I'd organised. I've been with the group since it started – a founder member really – and we used to meet in each other's houses, but it became popular so we decided to meet in the village hall instead. This particular meeting I was presenting notes on the wines, but with every bottle that was opened, the general hubbub of the members grew. I took it upon myself to get on stage and sing the presentation to make myself heard!

Do you have any other hobbies? I sing in a choir – Weatherbury Singers – which I've done for the last eight years. But dog agility training is one of my great loves – every Monday evening I spend three hours with a professional trainer. I'd love to compete, but don't really have the time at the moment. I have been to several competitions with Merlin and Chloe (*two of her Belgian Shepherds*) but without much luck. Merlin is very fast – he's mad – I can't keep up with him! Chloe is still young, but she's doing well – she's just learnt the seesaw. Both dogs absolutely love it.

Ed Richards

In your Garden

Seasonal notes and tips from Maureen Lock of *designerGardens*

Lavenders in the Garden

Lavender has been enjoyed for its flowers and its scent for thousands of years. It is well known for its essential oils and for many of us it is an essential plant in the summer border. As we all know, lavender comes from the Mediterranean and so thrives on well-drained soils with plenty of sunshine. The thing that usually kills off lavender (apart from cutting back too hard) is the wet, soggy winter soil – it **must** have good drainage.

To get the best from your lavenders – plant in a sunny position and water well after planting until they are established. Trim back the shoots by around 2.5cm to encourage bushy growth just after you have planted them. The crucial thing is how much to prune them and when. So – prune after they have flowered. Cut back the top growth but **DO NOT** cut into the old wood as it will not regenerate. Complete your pruning by the end of August so that any new growth can mature before the first frost. I then generally prune mine again in about March/April to keep them bushy.

There several types of lavender:

Lavandula angustifolia – Very hardy down to -15°C. It flowers in June and July and the flowers are short and sweet. It is the most popular lavender grown in England and its oil is used in expensive perfumes and aromatherapy as well as in dried flower arrangements and pot pourri.



As lavender is edible it can be used to flavour desserts or salads.

The most common lavender is *Lavandula angustifolia* 'Hidcote' – and deservedly so. Its flowers are deep purple, the leaves grey/green and it flowers for about seven weeks from June to August. Nowadays we don't have to stick to the purple blue varieties – there are white, pink and all shades of blue lavenders to choose from. *Lavandula* 'Miss Katherine' or *Hidcote Pink* are pretty pale pinks; *Lavandula* 'Blue Mountain White' and *L. Nana Alba* have white flowers.

Lavandula x intermedia is another type of lavender. It is also very hardy and is tall and fragrant. *Lavandula x intermedia* 'Grosso' is a very tall lavender, very fragrant with deep purple blue flowers. It is the main lavender used in French oil production. You do need a bit of space to grow it, but well worth it.

Lavandula stoechas – commonly known as French lavender – these are the ones with the 'ears'. They are less hardy than the English varieties and will survive down to -5°C so you may want to treat them as annuals and replace them each year. They require a bit more care and need deadheading regularly for which they will reward you by flowering from May to September.



They look better planted in small groups rather than as a hedge. You can use the flowers and the 'ears' to flavour salads and desserts. *Lavandula stoechas* 'Fathead', 'Kew Red' and 'Papillon' are all easy to find.

Plant Partners

Lavenders go well with roses. A border edged with lavender with roses in the centre makes a stunning display. They also look lovely with *Cistus x purpureus* and oriental poppies or as a centrepiece surrounded by a low box hedge.

BERE REGIS MOT & SERVICE CENTRE

TEL: 01929 472205



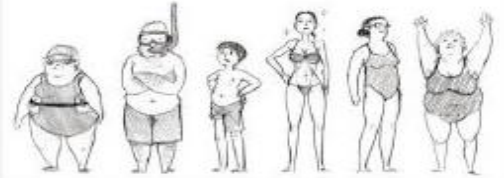
BRAKES * EXHAUSTS

**COMPUTERISED DIAGNOSTICS
LATEST EQUIPMENT FOR
MOST MAKES AND MODELS**

**OVER 30 YEARS' EXPERIENCE
IN THE MOTOR TRADE**

Proprietor: Bill Greer
Unit 1 Townsend Business Park
Bere Regis, BH20 7LA
(At rear of Shell Service Station)

Abbey Swimming Club



**JUMP IN AND JOIN
OUR CLUB**

Great value swimming
right on your doorstep –
less than £2 per week.
Swimming for the whole
family!

SWIMMING LESSONS FOR ALL
Juniors, adults, beginners and
stroke improvers.

**Bookings now for beginners (4 +)
and improvers.**

Contact Maria 880895 or Richard 837402

abbeyswimmingclub@gmail.com



Find us on Facebook
Abbey Swimming Club

Tel: 881443 / 880601 / 881524

**COLIN J. CLOSE
FUNERAL SERVICE**



*A family run business,
serving the local community of
Blandford and surrounding district*

CHAPEL OF REST
PRE-PAYMENT PLANS

24 HOUR SERVICE
MEMORIAL MASONRY

PEEL CLOSE, SALISBURY ROAD, BLANDFORD

Tel: 01258 453133

Email: info@close-funeral.co.uk

*Also at Cemetery Chapel
Sturminster Newton*



www.grassby-funeral.co.uk

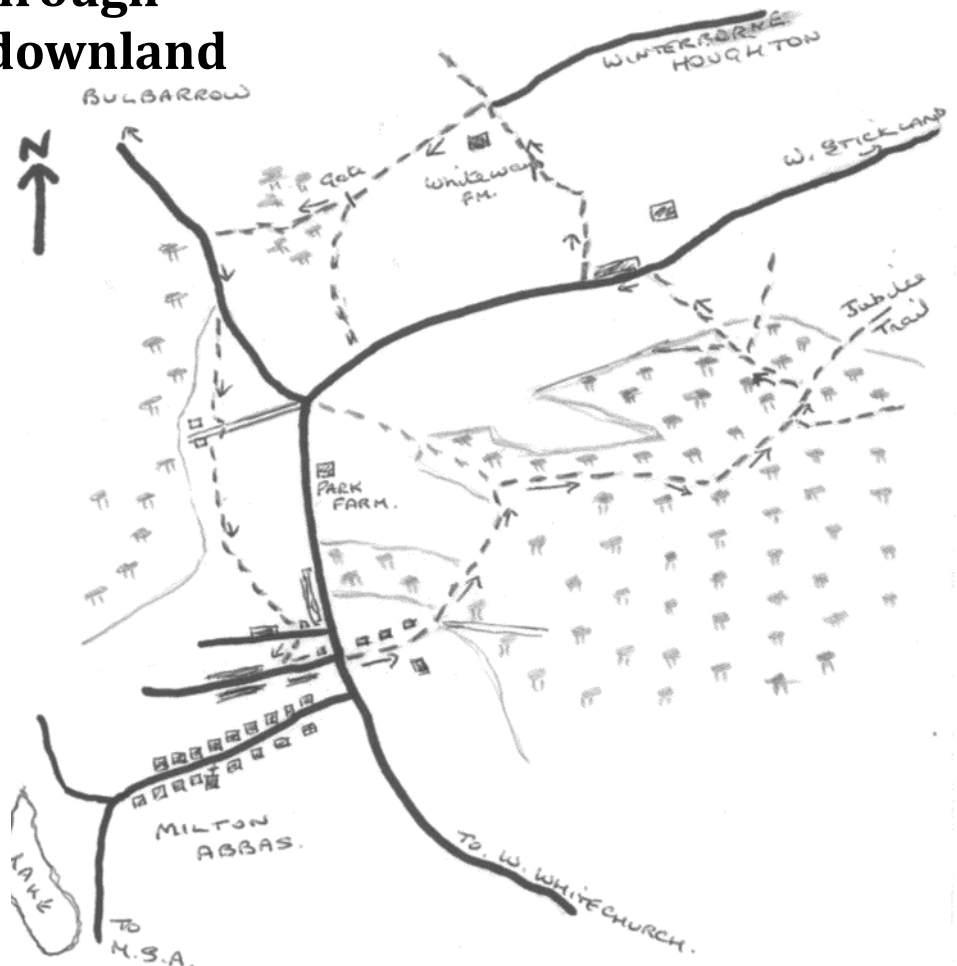
A 4½ mile walk through woodland and over downland

Starting place – Catherine’s Well,

Milton Abbas

PLEASE park considerately in Catherine’s Well. Cross the road near the bus shelter and take the bridleway opposite. This is the Jubilee Trail and you will follow it for most of the way through the woods, so look out for the signs.

Pass several bungalows on the left and stabling on the right. The track continues downhill until you come to a forestry barrier. Turn left here, uphill on a narrow, stony path. Eventually the path goes downhill to meet a forest track. Turn left and after 20 yards turn right onto a path, keeping to the Jubilee Trail.



Printer, copier, fax?
The place to get it...

Cartridge Family
ESTABLISHED IN DORSET SINCE 1998

- Inkjet & laser toner cartridges, faxfilm, ribbons, paper & memPods
- Cash-Back on empty cartridges & mobile 'phones

MAIL-ORDER SERVICE

recycle

The Rural Business Centre, Winterborne Whitechurch, Blandford, Dorset DT11 9AW
Call: 01258 880050 or 01258 880034

e: cashback@thecartridgefamily.co.uk

Member of South Wessex Waste Minimisation Group and committed to Local Agenda 21

KMc Electrical Services

All types of electrical work undertaken for domestic, industrial and commercial properties

- Extra points to full rewiring
- Test & Inspection of building wiring
- Three phase
- Emergency callouts

No job too small

Professional, Quality service

Tel: 01258 881439 Mob: 07712 646131
Email: info@kmcelectrical.co.uk

ELECSA REGISTERED MEMBER ECA TRUST MARK

You will soon come to another forestry track, turn right along this track, keep going on this track. You are now in Charity Wood. You will soon come to some magnificent beech trees, and then a bridleway off to the left. This is where you leave the Jubilee Trail, which goes on ahead. Take the left hand turn and after about 300–400 yards you come to a bridleway sign off to the right. Ignore this one, but 15 yards further on take a path off to the right. It is an indistinct path to start with, but you will soon see a wicket gate into a field ahead.

Enter the field and walk straight ahead keeping the hedge on your right. Head for a gate, onto the road and walk on past Southdown Farm and Dunbury Heights Cottages. Immediately after the cottages, turn right down a tarmac track. Pass through two gates then turn slightly left to head for a wire fence. Follow the fence downhill until you come to a wicket gate. Pass through here and continue downhill with the fence now on your right. At the bottom of the field go through the wicket gate to your left, and continue down a fairly steep, narrow path to Whiteways Farm.

Leave the farm and turn left along a track which climbs steadily uphill to Bully Plantation. Near the top you pass through a gate. The path divides here. Take the right-hand path up a slight slope and head between two clumps of trees. Keep to the well defined path onto the Bulbarrow road, passing two waymarkers on the way.

At the road, turn left for 200 yards and take the bridleway just off the road, to the left of the green forestry barrier. Follow the path alongside a fence, passing some tumbledown sheds on the way. When you come to a garden, bear left alongside a post and rail fence and onto a driveway. Turn right along the driveway for about 100 yards looking out for the bridleway sign on your left.

Take this path which goes straight ahead along the field boundary. You will pass some very old remnants of a stone wall on your right. Soon you will see the houses in Catherine’s Well. Bear left towards the Doctors’ Surgery and across the road to the Millennium Green, and onto where you parked your car.

Anne Snape

A traditional village pub where families are made welcome

in

Milborne St. Andrew




— THE —
**ROYAL
OAK**

Sunday Carvery
Available every Sunday
from midday
Adults £8.95 Children £5.95

Separate Sports Bar
Sky Sports and ESPN
Pool and Darts
Function Room and Skittle Alley



**ROYAL
OAK**



BAR SNACKS
LUNCHES
EVENING MEALS



Find us on
Facebook

follow us on
twitter

What's on in July

Thursday 4th
American food theme night
£8.95 all you can eat!

Thursday 25th
Pie night
£7.95 all you can eat!



Dog
friendly

**takeaway
menu
available**

tel: 01258 837 248

DORCHESTER HILL
MILBORNE ST. ANDREW
DORSET DT11 0JG