

80P WHERE SOLD

# Reporter

News and Views from around the area

Volume 7 Issue 3

March 2015

[www.milbornestandrew.org.uk/reporter](http://www.milbornestandrew.org.uk/reporter)

Milborne St. Andrew



ANOTHER SUCCESSFUL PANTO

## Beauty and Massage Therapy

For all of your beauty and massage therapy requirements contact Jo at

# Spoilt Rotten

Treatments for both ladies and gentlemen include Swedish Massage, Waxing, Manicures, Pedicures, Makeup, Facials, Airbrush Tanning and many more procedures.

Fully insured and qualified treatments

**Telephone 01258 837014**

Stag House, The Square,  
Milborne St Andrew, DT11 0JF

## Another good year for the Reporter

THE Milborne St. Andrew Reporter finished 2014 with a small loss, this reflects the fact we have not so far received as many advanced bookings for 2015. The Reporter team were able to acknowledge the help of our distributors for the year again, this time with an amaryllis bulb, all now producing magnificent flowers. We also sponsored the dog show at the May Fayre.

The team would particularly like to thank Jenny Balcon who examined the books for us this year.

### Reporter Balance Sheet Year ending 31st January 2015

	Receipts	Payments	
Advertising	£3,780.50	Printing	£3,918.03
Donations	£5.00	Expenses	£11.00
Bank Interest	£11.14	Dog Show	£100.00
Copies sold	£26.70	Thank you gifts	£81.43
<b>Total</b>	<b>£3,823.34</b>	<b>Total</b>	<b>£4,110.46</b>
<b>Receipts</b>	<b>£3,823.34</b>	<b>Payments</b>	<b>£4,110.46</b>
<b>B/F Cash</b>	<b>£5.84</b>	<b>C/F Cash</b>	<b>£34.11</b>
<b>B/F Bank</b>	<b>£7,486.64</b>	<b>C/F Bank</b>	<b>£7,171.25</b>
<b>Total</b>	<b>£11,315.82</b>	<b>Total</b>	<b>£11,315.82</b>

Cash in Bank £7,171.25

Cash in Hand £34.11

**TOTAL IN HAND at 31st January 2015** **£7,205.36**

**Loss for year ending 31st Jan 2015** **£287.12**

This Loss reflects not as many advance payments for 2015.

## Disclaimer

THE views expressed in the *Reporter* are not necessarily those of the editorial team. Also, please be aware that articles and photographs printed in the *Reporter* will be posted on our website and so are available for anyone to access.

## Advertise in the *Reporter* and get results

This publication relies on advertisers to pay for all production costs. If you reply to one of our advertisements, please mention that you saw it in the Milborne St. Andrew *Reporter*

### Advertise with the Milborne St Andrew *Reporter*

Distributed to approximately 500 homes 11 times each year

Full page £200.00 p.a. / £40.00 per issue

Half page £140.00 p.a. / £25.00 per issue

Quarter page £75.00 p.a. / £13.00 per issue

Eighth page £50.00 p.a. / £7.00 per issue

Back page £300.00 per annum

Community events at the village hall, half page or less free of charge, other community events at half the above rates for half page or less, all subject to availability.

Advertising copy **MUST** be received by the 14th of the month

[msa.reporter@yahoo.co.uk](mailto:msa.reporter@yahoo.co.uk)

Advertisers will also be listed in the Business Directory at

[www.milbornestandrew.org.uk](http://www.milbornestandrew.org.uk)

## VILLAGE LUNCH

To be held at the Village Hall on  
**Saturday 28th March from 12.15 to 2.00pm**

Wine or fruit juice/Turkey and mushroom pie

Rice pudding and jam

Coffee or tea/mints

Vegetarian option available

£6.50 per head

**Everyone welcome young and old alike**

Tickets or more information available from  
Josie Wright on 839090 or Chris Nowell 837543

### Your *Reporter* Team

Janet Allen, Susan Cawley, Linda Constant, Pete Constant, Carole Fornachon, Heather V. Hogg, David Payne, Ed Richards and Josie Wright

Advertising: Ed Richards 01258 837907

Advertising renewals: Linda Constant 01258 839246 (daytime)

Distribution: Janet Allen 01258 837551

General enquiries, news and features: David Payne 01258 837700

Treasurer and photography: Heather V. Hogg 01258 837392

Copy for the next issue **MUST** be received by the 14th March

Enquiries and copy to: [msa.reporter@yahoo.co.uk](mailto:msa.reporter@yahoo.co.uk)

E-copy as .doc or .pub files, pictures as .jpg files please

Paper copy to David Payne at 7 Bladen View

## Friday Coffee and Sharing

ST. Andrews Church PCC has decided to see if the coffee, cake and computers group run by Ed and Rose for some seven years can be re-started. We plan to meet every Friday from the 6th March (for three months as a trial to see if it is viable and if it meets a need) from 8.45 to 11.45am and continue at £2 per person to include coffee and cake.

We hope it will be supported by many people from the community and provide a meeting point for a wide range of ages.

We are starting earlier than the previous group as it might be a useful meeting point for parents after they have taken their children to school. We hope that it will follow the same format as the previous Friday group. We are open to suggestions about how it should develop. To start with, we hope people will come along and enjoy chatting together, and perhaps bring their computers and share their skills and knowledge with others.

We would like to develop a database of people's skills that they can share with others in the village so that a wider sharing of skills can take place beyond computers.

From time to time we will invite people with particular interests and experiences to be at the Friday group NOT to give a talk but just to be available to chat to people.

We are forming contacts with the Dorset Credit Union and local mum's support groups. (Let us have your ideas for other groups.)

We hope that some people will sign up to a rota: to open up; collect the money; make tea and coffee on the Friday; make a cake (perhaps once a month.)

For more information, to offer help or with ideas, please contact.

*Eric Austen 01258 837213 austeneric@yahoo.co.uk*

## Pa55w0rd pr0tect10n

FRAUDSTERS regularly hack into personal online accounts to obtain details which will allow them to defraud you. To prevent fraudsters, it's very important to use strong passwords when setting up and accessing online accounts and online banking.

Passwords should be memorable enough not to have to write them down and long enough to be unique and hard to guess, which will ensure they are less vulnerable to being stolen. If it is not possible to remember password a password manager could be used to store them securely.

### Protect yourself:

- Make sure password are memorable so that you don't have to write them down. Make sure they are unique.
- Th!nk abOut how you could change the l3tters in your n0rmal passw0rds to make them more difficult to gue55!
- Use long, non-dictionary words and use different ones for each of your personal accounts and online banking. Make sure you change them regularly.
- Make sure password are not stored on devices that have shared access by other people, for example in internet cafes and when using other public Wi-Fi.
- If you believe you have become a victim of account hacking, change your password immediately and report to Action Fraud: [www.actionfraud.police.uk/report\\_fraud](http://www.actionfraud.police.uk/report_fraud)

## Notice of the Village Hall's Annual General Meeting

THE Village Hall will be holding its Annual General Meeting on Wednesday the 22nd April at 7.00pm to which all are invited. This meeting will enable all to have a say in the future of the hall, the play park and surrounding grounds; you may also wish to be involved in the election of trustees for 2015-2016.

**Deadline for the April Reporter is 14th March**

## Robin Hood is much more than Men in Tights!

THE curtains opened and the expectant audience were welcomed to Sherwood Forest with a rendition of "Happy", with the peasant chorus being led by the strumming minstrel Alan-a Dale, confidently played by William "Pharrell" Bishop. And Happy set the tone for the evening, which saw the traditional story creatively staged for pantoland.

The dashing Robin Hood, played by Marie Hayter had just the right amount of thigh slapping and the Merry men brought more merriment, with things being made much better by Much (Jo Coetzee). Whilst Robin was robbing, he was also looking for love, so thankfully the beautiful Maid Marion (Freya Pugh) was in the right place at the right time. The lecherous Sheriff (Roy Sach) of course had other ideas and had plans to marry Marion himself, in between relieving everyone else of their money through theft and rising taxes. And we all got to relive his dreams thanks to some clever filming beforehand. Every panto villain needs their assistants and in this case Nickit (Gren Elphinstone Davis) was hindered throughout by Scarper (Jon "Nice but dim" Riddle). When wanting to know what lay ahead the Sheriff could always rely on his Soothsayer (Adrienne Rogers), although her crystal ball was often a little hazy. Thankfully the Enchantress (Caroline Nobbs) kept the story on track, reassuring us that true love would win through.

And of course every panto needs a Dame, so welcome Nanny Nora Tittle Tattle to the role. As nanny to Marion, school teacher and Brown Owl, this role had very big boots to fill and at six foot plus Larry Lagrue filled them in glittery style.



Modern pantos weave old traditions with current events. Scarlet (Livvy Wise) finds herself alongside Cher Wood (Julie Lye) and the local gang of hoodies (Lily Fox, Willow Barnes, Zach Hayter) in training to join Robin's group. As the fairytale dictates Friar Tuck (Bill Preston) was ready to lend a hand when not eating, but he is now assisted not by Little John but by Little Joan (Rhianna Webb). And whoever would have thought of Robin competing in Nottingham's Got Talent to win the hand of Marion – only in pantoland.

With four shows in three days village panto needs stamina, so well done to all the younger cast members who filled so many varied roles – Hannah Kirkman, David and George Townsend, Barnaby and Betty Rogers. And Peter Riddle who must have had a sore head after being on the receiving end of the Sheriff's medieval "Simon Cowell" buzzer.

It was a great script, brought to life by the talented players, accompanied by music from Sam Ryall. Ballads and rock guitars, shouts of "he's behind you" and a good dose of slapstick, all completing a great evening's entertainment. Well done to Jess Elphinstone Davis for keeping it on track as director and to all those backstage (including fabulous costume makers) and front of house who completed the package.

If only the story of rising taxes were limited to fairytales – oh yes it is, oh no it's not!!!

*Helen Pugh*

*Thank you Helen for another year's account of the pantomime for the Reporter, you now have a job for life. Ed*

# **P.N.GRAY**

## **ELECTRICAL LIMITED**

**AGRICULTURAL - DOMESTIC - INDUSTRIAL INSTALLATIONS**

**ESTABLISHED OVER 50 YEARS**

ALL ELECTRICAL WORK UNDERTAKEN FROM  
INSTALLATIONS TO MINOR WORKS  
INSPECTION AND TESTING  
REWIRING AND MAINTENANCE

FULLY ENROLLED WITH THE BRITISH STANDARDS  
INSTITUTE FOR SELF CERTIFICATION AND  
BUILDING REGULATION PART "P"

GIVE US A CALL FOR A FREE  
NO OBLIGATION  
QUOTATION OR JUST SOME FRIENDLY ADVICE

Contact us: 01258 837354

Mobile: 07774 838851

Paddock View, Dewlish DT2 7LR

E-mail:

[pngrayelectrical@btinternet.com](mailto:pngrayelectrical@btinternet.com)



ELECTRICAL CONTRACTOR  
KM 91166



**MARCH 2015**

**Lunch Extra on all outings**

Saturday March 7th 2015

Lunch at Trumpet Major Dorchester

Tea at Sandringham Court

Fundraiser for Dementia Friends

Return Fare £5.00

\*\*\*\*\*

Saturday 14th March Haskins Garden Centre and Hobbycraft

Longham

Return Fare £8.50

\*\*\*\*\*

Wednesday March 25th 2015

BRIDPORT

Shopping at Morrisons or the town

Return fare £8.50

Contact: Margo 01258 837749



Dorset  
Community Foundation



**Barry Bright** (trading as)

# **Milborne Properties (Dorset) Ltd**



*Local builder for last 30 years*

All building works undertaken

Extensions, All carpentry and roofing

Repairs, Maintenance

Hard landscape, Fencing, Brick Pavior Drives

Kitchens, Bathrooms

Double Glazing, Conservatories, Carports

and all plastic cladding

Also decoration work undertaken

**Telephone: 01258 837042 Mobile: 07787551256**

**Greenacres, Dorchester Hill, Milborne St. Andrew**

**Blandford Forum, Dorset DT11 0JQ**

# Round Robin Ramblers

*The local villages walking group*

WALKS are normally held on the first Sunday and the third Wednesday of each month. Please join us as we enjoy exercise, good company and the wonderful Dorset countryside.

**Any questions, please feel free to contact Ian Bromilow, 01258 880044.**

**Sunday 1st March – 2.00pm**

**Winterborne Houghton**

Meet outside the church in Winterborne Houghton.

Grid reference: ST 820045 on OS Explorer Sheet 117 (approx. 4.5 miles)

**Wednesday 18th March – 11.00am**

**Milton Abbas and surroundings**

Meet near St James Church, Milton Abbas

Grid reference: ST 806018 on OS Explorer Sheet 117 (approx. 6 miles)

Bring a packed lunch.

**Sunday 29th March – 2.00pm**

**Stour Valley, Sturminster Newton**

Meet at the car park at the rear of the Lower School, Sturminster Newton.

Grid reference: ST 785142 on OS Explorer Sheet 129 (approx. 4.5 miles)

## **Please note:**

**Who** All welcome including well-behaved dogs and their responsible owners. No pre-booking required just turn up.

**Wear** Suitable clothing for wet conditions and location, walking boots or Wellington boots.

**Bring** Waterproofs and refreshments (packed lunch on Wednesdays).

**Pace** We go at the pace of the slowest.

**Terrain** Expect mud, inclines and stiles.

**Aim** Keep fit, enjoy the Dorset countryside and each other's company.

**Legal** We look after one another but in the end you are responsible for yourself.

---

## What is known about the history of Milborne?

ON Saturday 7th March Maria Gayton will give an illustrated talk in St Andrew's church to explain what sources of historical information are available and how the County Record Office can help. The talk will start at 2.30pm and be followed by tea and cakes, and we would be pleased to hear from anyone who has any information or experiences to add to the talk. Tickets at £5.00 are available from Pam Shults, Eva Stockley or on the door.

*Eva Stockley*



# LOGS

## £75.00 per load

contact

**Mark Revell**

**Milborne St. Andrew**

**837 536**

# When the lights went out in Milborne . . .

DORSET County Council (DCC) made the decision to reduce the total energy budget for our street lighting by 20% (along with other service area reductions) in order to fill the gap left when central government funding was reduced.

Some night owls may have noticed that they have now gone out in some streets, sometime between 12.30 and 6.30am. DCC believes that, initially, this will save £300,000 per year rising to £10 million in the next 25 years. It is not, they tell us, a statutory duty but say it will be kept on in CCTV and high crime areas, town centres, designated traffic routes, roundabouts, high speed roads and those with vertical speed humps. The lights will still operate from dusk until midnight and back on again from 5.30am until dawn-if it is still dark. In summer time the lights still operate on GMT so will go off at 1.00am (BST) and back on again at 6.30am. This is termed 'Part-night lighting' and has been rolled out across Dorset since 2011. They stress that these times are only approximate, individual lights will operate earlier or later.

They explain that it is not possible simply to dim these lights, leave some on, reduce the time lights are switched off or turn them back on unless the situation clearly meets their policy criteria. Each light is fitted with an individual sensor which contains a solar calendar. Each sensor is 'factory set' with the switch off timings and no communication with, or adjustment of, the sensor is possible. This was all communicated to Parish Councils and the Police at the beginning of last year with the promise that work would start and changes made towards the end of April 2014 with an estimated four month duration. I understand from Cllr Jenny Balcon, Chair of MSA Parish Council, that all town and parish councils and Dorset Police were invited to comment on the change. This consultation began two years ago and they were asked to advise of and identify any significant local safety concerns and operational requirements. An assessment was made of each road before it was deemed to be included in the policy.

A further email sent at the end of January this year stated that conversion work failed to start on time and a 'protracted delay, due to lack of resources at (their) service provider' meant that work would commence 'very shortly'. Hence the, apparently, piecemeal effect currently being experienced in this village. However, Mark Green of the Dorset Highways County Lighting Engineer's Office assures me that he has sought confirmation from their service provider (SSE Contracting) that, currently, 'all Dorset County Council's street lights in Milborne St Andrew have been converted to part night lighting'.

Currently, Dorset Lighting Ltd (a subsidiary of Scottish and Southern Electric (SSE)) provides all our front line street lighting service. More information about the part-night lighting scheme is available at [www.dorsetforyou.com/partnightlighting](http://www.dorsetforyou.com/partnightlighting)

For Street Lighting Faults – Tel: 24Hr Freephone 0800 0684145 or Online: <http://lightonindorset.co.uk/Public/Default.aspx>

*Carole Fornachon*

---

## “Patient Voice”

“PATIENT VOICE” is the Patient Reference Group for patients of Milton Abbas and Milborne St. Andrew Surgery. We meet as a group on a quarterly basis to discuss topics of interest with the surgery. The next meeting is scheduled for Thursday 12th March at 6:30pm and will be held in the Milborne St. Andrew surgery waiting room. It is open to all patients of the surgery to attend but it would be appreciated if you wish to do so that you let the secretary, Nigel Hodder, know a few days in advance. If numbers look like exceeding the capacity of the surgery a more suitable venue will be found and communicated to those who have provided contact details. You can contact Nigel on 881709 or by emailing [nigel2749@tiscali.co.uk](mailto:nigel2749@tiscali.co.uk).



THE BENEFICE OF PUDDLETOWN, TOLPUDDLE AND MILBORNE WITH DEWLISH  
PART OF THE CHURCH OF ENGLAND IN THE DIOCESE OF SALISBURY

## The missing pieces

I have recently resurrected a pastime which I have enjoyed from time to time in my life – doing jigsaws. The most recent phase of this began when I was grounded by a written-off car and as a result could not go away as planned in January. Instead I had a week at home, trying to do anything but work. A trip to the library in Puddletown and I was all set up, with 1000 pieces to sort and join together.

Since then it has struck me that our life can seem somewhat like a jigsaw, without a clear picture to follow. The final and complete picture is one that only God has, and which we will not see until his kingdom finally comes.

I'm quite traditional in my way of approach, always beginning with the outside pieces to make a frame before I attempt to fill in the middle of a puzzle. We all have frameworks in life, into which we fit everything else. They might be family life, work, our faith and belief systems, our friends, the Bible, the law: the things that are important and clear to us.

But most of us also have areas of our lives that seem a bit jumbled, where we can't make the pieces join together to form a coherent design. It takes time to work out which piece goes where and sometimes we have to unpick parts of the puzzle that don't seem to fit quite properly and start that bit again.

Each year Lent gives us an opportunity to get a few more pieces in place. It is a chance to look at our lives in an objective way and try, with God's help, to get the pieces sorted out in the best way we can so that more of the picture makes sense.

It's a time to look at our lives and ask ourselves: what do we need to change in order to make ourselves more Christ-like? I wonder if any of you took up the challenge I offered last month in the form of the 40 acts. How is it going? The more generous we are and the more our lives look outwards to other people and to God, the more complete our jigsaw.

Sometimes we discover a missing piece or two in our jigsaw. I like to think of these as the questions for which we are searching for answers but not receiving one we understand. Questions like why do innocent children suffer? Why does God allow illness and disease to affect people?

Perhaps one day all will become clear and we will see the whole picture revealed by the individual pieces of the jigsaw.

Until then we'll just have to learn to live with an unfinished puzzle, with some parts beautifully joined together and complete, but others remaining messy or unconnected.

But let us do this always remembering that God has the whole picture, all the pieces and us in his very large hands.

With best wishes

*Sarah Hillman*

## St. Andrew's Church notes

JANUARY always seems to be a quiet month after all the excitement of Christmas but there has been quite a lot going on behind the scenes. About 30 people enjoyed the benefice **Candlemas Party** in February and there are now reports to write for the PCC's Annual Report for the **annual church meeting which will be on Sunday 22nd March** after morning service. The whole village is invited to the first part of this meeting when the churchwardens are elected, and all those on the church electoral roll are encouraged to come to the meeting that follows when members are elected to the Parochial Church Council and various other posts, and receive reports from the church officers.

Our **'Open the Book'** team are back again every two weeks or so at Milborne's First School to deliver short playlets. This term we have continued with Old Testament bible



"Let my people go!"

## CHURCH SERVICES March 2015

### 1st March – Lent 2

9.30am	Parish Communion	Tolpuddle
9.30	Celebrate . . .	Milborne
11.00	Parish Communion	Puddletown
11.00	1662 Morning Prayer	Dewlish
6.00 pm	United Benefice Lent Evening Service	Milborne

### 8th March – Lent 3

8.15am	1662 Said Communion	Puddletown
9.30	Methodist United Service	Tolpuddle
9.30	Holy Communion + Baptism	Milborne
11.00	Puddletown Praise	Puddletown
11.00	Parish Communion	Dewlish
6.00pm	United Benefice Lent Evening Service	Dewlish

### 15th March – Mothering Sunday

9.30am	Mothering Sunday Communion	Tolpuddle
9.30	Mothering Sunday Service	Milborne
11.00	Mothering Sunday Communion	Puddletown
11.00	Mothering Sunday Service	Dewlish

### THURSDAY 19th March

1 noon	Lunch-time Communion	Puddletown Church Room
--------	----------------------	------------------------

### 22nd March – Passion Sunday

9.30am	Coffee, Pastries + All-Age Worship (10am)	Tolpuddle
9.30	Parish Communion + APCM	Milborne
11.00	1662 Morning Prayer	Puddletown
11.00	Family Communion	Dewlish
6.00pm	United Benefice Lent Evening Service	Tolpuddle

### 29th March – Palm Sunday

10.00am	United Benefice Holy Communion	Tolpuddle
6.00pm	United Benefice Lent Evening Service	Puddletown

### MORNING PRAYERS (Monday – Thursday 8.15am Saturday 9.00am)

Monday – Puddletown	Tuesday – Milborne
Wednesday – Dewlish	Thursday – Tolpuddle
Saturday – Puddletown	

### LENT

During Lent there will also be:  
Compline in Milborne at 6.00pm on Thursdays  
Evening Prayer in Dewlish at 6.30pm on Thursday 5th March, then Tuesdays.

### Do you need a lift to church?



If you have difficulty getting to church or need transport when the Benefice Service is at another church, we can arrange transport for you.

Please contact Pam on 837203 or John on 839090.

stories. The children enjoyed being the Red Sea and dividing down the middle to let Moses and his followers flee from Egypt, and on another occasion stood as the walls of Jericho before falling down at the sound of paper trumpets!

We are now well into Lent and have extra services. There is an **evening benefice service each Sunday at 6.00pm**, which will be at **Milborne on 1st March**, and we have the quiet half-hour evening service of **Compline every Thursday at 6.00pm** up to 26th March. Everyone is very welcome to join us.

Plans are being made for our special **Mothering Sunday service on 15th March at 9.30am**. This will be less formal than before and be led by the team who organised last year's Harvest Festival and Christingle service, and the Celebrate services that we hold on the first Sunday of each month. All newcomers are especially welcome at these services which are designed for all the family.

At our meeting to discuss ideas for the annual benefice fundraising event we decided that this year we would stay with the **Athelhampton Fete on 31st August** but introduce more activities and consider a different date and location for next year. Let's hope that the weather is kind to us this time!

The Events Committee continue to run social events which raise funds to support the church. This year we are planning another varied programme which includes during the next few weeks:

**7th March** A talk by a member of the Dorset Archive Service about the **history of Milborne**, and a **'card making party'**.



**Easter Experience Holiday Club**

Good Friday 2.00–4.00pm in village hall and church

There will be hot cross buns, Easter biscuits, chocolate Easter nests and a trail round the church for 0–12 year olds. Contact one of the churchwardens for full details and to book a place for £2 (£1 for second sibling) before Monday 30th March.

In May there will be a craft day, and an Open Gardens event in June coupled with the Gardening Club.


These and further events will be advertised nearer the time so look out for further details.

John Wright 01258 839090 john@jjwright.force9.co.uk

Pam Shults 01258 837203 pamshults@btinternet.com

*John Wright and Pam Shults (Churchwardens)*

## Church Easter Flowers for Remembrance



IF anyone would like loved ones to be remembered this Easter, please give your donation and the name(s) to be remembered, to Helen Pugh, 2 Huntley Down (837080) by Friday 27th March.

Every name received will be displayed in the book of remembrance in St. Andrew's church during the Easter period, with the donations being used to fill the church with flowers.

## Church Contacts

Vicar Sarah Hillman

01305 848784 E-mail: sarah.c.hillman@tesco.net

### Church Wardens

**Milborne St. Andrew**

John Wright 01258 839090 Pam Shults 01258 837203

www.milbornestandrewchurch.org.uk

**Dewlish**

Jim Burg 01258 837466 Sue Britton 01258 837218

### Benefice Office

Marion Bishop puddletownbenefice@outlook.com

or by telephone on 07812 687266

## Dewlish Church Notes

### Candles light the way towards Lent

WE were so pleased to have an Evening Service for Candlemas. The church looked beautiful with the windows adorned with greenery and the many candles burning brightly. All in all, a very fitting end to the Christmas period.

And now we look forward to Lent. In Dewlish we shall be holding a short **Evening Prayer** commencing on Thursday 5th March at 6.30pm in All Saints, and thereafter on each Tuesday up until Holy Week.

We are also holding **Lent Lunches** on five successive Thursdays in aid of Water Aid (suggested donation of £4). The following dates and venues are provisional at the time of writing, so please confirm details with members of the Church Council.

26th February	Mrs Audrey Penniston	12.30pm
5th March	Mrs Sue Britton	12.30pm
12th March	Mrs Margaret Groves	12.30pm
19th March	Mrs Daphne Burg	12.30pm
26th March	Mrs Judith Bridgen	12.30pm

Our **Spring Sale and Coffee Morning** will be held in Dewlish Village Hall on Saturday 21st March, 10.30am – 12noon. We plan to include the following: new stall, cakes and produce, bric-a-brac, toys, plants and flowers, a raffle and, of course, refreshments. Donations, especially cakes, would be most welcome.

Our **Mothering Sunday Service** is on 15th March at 11.00am when we shall once again present all Mums with a posy of spring flowers. Please come and join us!

*Daphne Burg*

## Do you know about . . . The Village Lunch

OVER the past few years there has been a lunch served in the village hall on the last Saturday of each month for anyone who would like to come. The cost is £6.50 and for that a hot lunch and dessert is provided with wine or a soft drink, tea or coffee to follow and a mint. The meals are brought across, freshly cooked, from The Royal Oak.

Diners gather from 12 o'clock and the food is served to the table by willing helpers.

It is a time to meet people and enjoy good food together.

There are posters around the village detailing the menu for the coming meal.

If this is something you would like to try either phone Chris on 837543 or Josie on 839090 for a ticket – booking is essential at least a week before the meal.

## Village Quiz: Saturday 9th May in the Village Hall

*First Question: 7.30pm. Cost: £6 for each team of four to be paid at the door. This number must not be exceeded per team. Other teams can be made up with 'spare' competitors. This is a sociable 'fun' evening for a good cause . . . the Village Hall. Bring your own nibbles, the bar will be open. Winning team runs next year's Quiz. Come in good time. See you there!*

BERE REGIS MOT & SERVICE CENTRE

TEL: 01929 472205



**BRAKES \* EXHAUSTS**

**COMPUTERISED DIAGNOSTICS  
LATEST EQUIPMENT FOR  
MOST MAKES AND MODELS**

**OVER 30 YEARS' EXPERIENCE  
IN THE MOTOR TRADE**

Proprietor: Bill Greer  
Unit 1 Townsend Business Park  
Bere Regis, BH20 7LA  
(At rear of Shell Service Station)

**Old Washing Machines, Cookers,  
anything metal  
removed free  
of charge**



**REGISTERED CARRIER**

**Please call: 01258 837100**

**Greenways Tree Care**

**and  
Garden Services**

(fully insured)



Felling  
Reductions  
Pruning  
Stump Grinding  
Hedges  
Lawn Maintenance  
Turving  
Strimming  
Garden Fencing  
Chippings delivered

**Tim Moore**

01258 837124

07968 154708

20 years experience  
Free estimates and advice  
Dewlish, Dorchester



[www.hustingselectrical.com](http://www.hustingselectrical.com)  
[office@hustingselectrical.com](mailto:office@hustingselectrical.com)  
Office: (01258) 837385 Workshop: 839052  
Mobile: 07973 574 215 or 07549 380 217  
New Services / Traditional Values  
Call or Email us with your requirements.

# Hustings Electrical Ltd.

**Electrical Contractor Since 1980 - New Technical Services Division**

Agricultural - Commercial - Industrial - Bespoke Panel Building & Controls  
Domestic - Equestrian - Fire & Intruder - SMS & Programmable Logic Automation  
Alarms - Emergency Lighting - Test & - Computing Infrastructure Services  
Inspection - Control Systems & Panels - Data Recovery - Firewall Security  
CCTV - Data Cabling and Computing - Custom Builds & Repairs - Malware Rescue  
Security & Access Control Systems - Website & WebApplications - IP-CCTV

10 The Rings, Milborne St Andrew, Blandford Forum, Dorset, DT11 OHY



## Keep warm and save Money

SIMON THOMPSON from Dorset Community Action came to the Wednesday Club and gave an informative and entertaining talk advising us how to keep warm and save money this winter.

The Big Energy Saving Network is a project designed to help vulnerable people get the right information and help them to understand their options for saving money on energy bills. The project is being delivered by Dorset Community Action across the county until March 2015. As part of the project they are offering free advice and information sessions to help people make the best choices about energy suppliers and to understand more about saving energy.

One of the prime pieces of advice is that we should all research the market to find the best and cheapest provider and then either switch providers or advise our current supplier that we have found a better deal and they will most likely offer us a reduction in costs rather than lose us as a customer.

Simon gave us a short quiz to see how much we knew about energy saving and many of us found out that we knew very little!

We then enjoyed coffee or tea and cakes and a raffle while Simon answered our individual queries. He also gave away three power saving devices each worth £25 to three lucky winners whose names were drawn at random.

Our next meeting is on 4th March at 2.00pm in the Village Hall when we will be playing bingo and enjoying meeting up with friends for tea and cake and a chat. In May we are once again at the Village Hall when Roger Lamb will give a talk "Nature or Nocturne".

Visitors will be welcome at both these events.

*Lis Watts*

## Royal British Legion Flag



FOR many years the flag of the Milborne St. Andrew Branch of the British Legion has been displayed in the northwest corner of St. Andrew's church, but we have had to move it now that the area has been made into a children's corner. We could find a place to display it but the church is not an ideal environment as the cold damp conditions in church are not good for its preservation. An alternative is to take it to the Dorset headquarters of the Royal British Legion in Bovington where it

would be on permanent display with the other flags they hold. What do you think? If you have a view please let the *Reporter* or one of the churchwardens know. We must do something soon and we need to hear your views before we do it and not afterwards!

*John Wright*

## News from Milton Abbas Surgery

ONCE again I am writing to keep you up to date with events at Milton Abbas Surgery and impart important health messages. If there are any other matters you would like us to address, please let us know by ringing to speak to Carol Taylor, Practice Manager, on 01305 848333 or e-mailing [carol.taylor@dorset.nhs.uk](mailto:carol.taylor@dorset.nhs.uk).

### Opening Hours for Easter

**Over the Easter period the surgery will be closed on Good Friday 3rd April, and Easter Monday 6th April.**

**Please note that the surgery WILL BE OPEN on Easter Saturday, 4th April.**

### Have you visited our website recently? ([www.masurgery.co.uk](http://www.masurgery.co.uk))

We were surprised to find that only 775 patients (22%) have set up secure access to the area of our website where they can order repeat medication, book appointments online and see a restricted view of their medical records. So, I'm writing to encourage you to visit the website and login to access these functions. And, you may be pleased to know that you don't HAVE to request login information from the practice in order to access these secure services; you can simply go onto the website and register there: <https://patient.emisaccess.co.uk/Account/Login>.

If you find you need help in navigating your way through the login process, please don't hesitate to telephone us, as we will always be pleased to help you.

For those who have a smartphone or a tablet PC, Patient Access is also available as an App, so, as the saying goes, you can access us "on the move" should you wish to.

However, you don't need any passwords or logins to see the information posted on our website; you can find there:

- When we are open: opening times, including arrangements for the Easter holidays
- What services we provide: information about the routine services we offer and about special clinics we provide
- Feedback from patients: latest minutes from the Patient Voice Group, as well as date of the next meeting, current results of the Friends and Family Test and the Patient Survey Group feedback.
- Health Information: on every subject under the sun, including video content and links to specialist websites.

### Surgery Opening Times

<b>Monday</b>	8.15am – 1.00, 2.00 – 6.30pm
<b>Tuesday</b>	8.15am – 1.00, 2.00 – 6.30pm
<b>Wednesday</b>	8.15am – 6.30pm
<b>Thursday</b>	8.15am – 6.30pm
<b>Friday</b>	8.15am – 6.30pm
<b>Saturday</b>	8.30am – 10.30pm

Any changes to our opening hours are advertised on our website and in the surgery.

The dispensary is closed every day between 1.00 and 2.30pm.

*Carol Taylor Practice Manager*



For all your fencing and timber building  
– Over 20 year's local experience –

Fencing – Decking – Summer Houses – Sheds –  
Gates – Pergolas – Trellis and Archways –

In association with Mintern Building and Landscaping

For a free, no obligation, quotation please call:

07904 000863

or 01963 363535

Email: [Carl.Mintern@gmail.com](mailto:Carl.Mintern@gmail.com)

## Yoga

### Yoga classes in the village hall

1.30 – 2.45pm on Thursday afternoons

Please bring a mat and wear comfortable clothes.

Individual classes tailored for you also available.

For information ring

**Sarah Ryan on 01258 839230**

or email [saryan6630@aol.com](mailto:saryan6630@aol.com)

*Yoga teacher, trainer, therapist*

## **THE MILBORNE PLAYERS**

**Thank You to everyone who came  
and saw our production of**

### **"Robin Hood"**

**and made it such a great success!**

**Our next production (in  
September) will be announced  
next Month.**

*If you are interested in being  
involved please come and see us 8pm  
Mondays at the Village Hall!*



Find us on:  
**facebook**

*"The Official Milborne Players"*

Or drop us an email to  
[info@MilbornePlayers.org.uk](mailto:info@MilbornePlayers.org.uk)

[www.MilbornePlayers.org.uk](http://www.MilbornePlayers.org.uk)



## **HEALTHY PETS LTD**

Come and see us for full dietary advice  
plus friendly service

Full range of foods, treats and toys  
for your faithful friends  
Specialist in wild bird food

**DELIVERIES TO YOUR  
AREA EVERY FORTNIGHT**

website - [www.healthypetsblandfordltd.co.uk](http://www.healthypetsblandfordltd.co.uk)

Unit One, Milldown Business Centre  
Shaftesbury Lane, Blandford, DT11 7TD

e-mail - [dave.healthypets@btconnect.com](mailto:dave.healthypets@btconnect.com)

**Tel: 01258 459066**

## **COUNTY TREE SERVICES**

**All aspects of Tree Surgery undertaken by  
NPTC Surgeons**

**Commercial and Domestic  
Fully Certified and Insured**

- Re-Shaping
- Reductions
- Pruning
- Dismantling
- Section Felling
- Hedge Cutting
- Stump Removal
- Equipment Hire
- Land and Site-Clearance
- 24 Hour Emergency Call Out
- Free Estimates

[www.countytreeservices.com](http://www.countytreeservices.com)

E-mail: [info@countytreeservices.com](mailto:info@countytreeservices.com)



**Quality Seasoned Hardwood Logs**

Loads at £75 and £160

Free Delivery throughout the area

Kindling and Wood Chippings Available

Hardwood and Softwood Planking

**Tel/Fax: 01258 837377**

Mobile: 07971 276980

## The Village Hall subgroup plans to develop the top field

FOLLOWING extensive consultation last year, the Village Hall Committee tasked a sub group to move forward the plans to develop the top field and meadow with the help of the Gardening Club, who have been involved for a long while.

It was agreed that more trees will be planted at the north end of the top field and on the slope there; the First School children will be involved in doing some planting as well. The group are exploring how to create pathways through new meadows and how to create a BMX type cycle track. Some representatives will be visiting a BMX track in Wyke Regis for ideas. Plans to manage the areas of brambles are seen as very important in providing a barrier and in being of ecological value. They hope to provide safe seated resting areas as well.

Once the background research has been done and the group are ready to start changing the top field then there will be a call for volunteers. If you can help please leave your name and contact details in The Royal Oak, email the Village Hall address or speak to one of the committee.

## Choral Classics for Easter

THERE will be a concert by the Briantspuddle Singers on 28th March at 7.30pm in St. Christopher's Church, Winfrith Newburgh, conducted by Robert Dishington. The choir, formed over 60 years ago, has had only three conductors, perhaps due to the warmth, friendliness and enthusiasm of the singers who welcome new members of all ages and musical experience. The organist will be Sam Hanson, organist at St. Peter's Bournemouth.

The music to be performed will be Mozart's "Sparrow Mass" and Sancta Maria Mater Dei, Haydn's Te Deum in C and Schubert's Mass No. 3 in B flat. The three composers are historically linked during the transition in European music from 'classical' to 'romantic'. Mozart and Haydn were musical and personal friends until Mozart's death in 1791, and Schubert is thought to have been influenced by having sung Haydn's masses in his youth.

The exuberant and Spring-like Mozart Missa Brevis may have been written for an Easter celebration; listen carefully for the musical clues to its nickname of 'Sparrow'!

Haydn's Te Deum was performed in 1800 to celebrate Lord Nelson and Lady Hamilton's arrival at the Esterhazy country palace (where Haydn was employed as Court Musician). The rich flavour of meditative Gregorian plainchant is embedded within the lighter, festive mood of the piece.

The Mass in B flat major is thought to be one of the most beautiful and lyrical of Schubert's Masses.

Tickets are £10 – available at the door or in advance from the Box Office 01929 554055 or email: mail@briantspuddlesingers.co.uk

Angela Goodman (BPS Publicity).

# A.J. LAKE

## Painting & Decorating

**Interiors & Exteriors**

**FREE quotes**

**25+ years experience**

**References available**

**No job too BIG or SMALL!**

**Tel: 01258 837 687**

**Mob: 07989 817 826**



## LETTERS to the reporter

Dear Reporter

*I should like to thank the Milborne Players for a wonderful evening. I am not usually a great fan of pantomime, but Robin Hood was excellent. It worked at all levels and there were no weak points. It had a dashing hero who slapped his thigh with gusto; a very pretty heroine who was also feisty; great comics; children who really added to the production, and a perfect villain (with fantastic leather trousers - I hope we shall see them in future productions). I laughed and boomed and hissed and sang along. Thank you!*

Sarah Ryan

*I also would like to record my thanks to The Players for a great pantomime. Ed*

Dear Editor

*When Mr Hopper was serving as Parish Councillor surely he should have listened to the villagers comments rather than worry about his feelings that they were just jibing or abusing him. Had he listened to their comments he would have understood what they were trying to tell him.*

*Anyone attending the meetings were feeling that one or two committee members were taking over the entire meeting. A number of village people have stopped attending, because they did not like listening to a councillor who kept burbling.*

*It should be noted that the first Parish Council Meeting after Mr Hopper resigned even though it included a long discussion about budget matters, allowed members of the audience to be home by 21.00hrs and not at least 22.00hrs as was usual when Mr Hopper was in attendance.*

Yours faithfully

Robin Keller

Conifers.

## Local small-ads

Small ads of less than 30 words from local, private, advertisers are published **free of charge**

**Free – 10 x Demijohn** 1 gallon glass containers for making home-made wine. Telephone 01258 837921 for more information.

**For sale – 2 x 400l modular composting bins.** £10.00 each. Telephone 01258 837921 for more information.

**For sale – Pair of Mission 732 loudspeakers** plus stands and cables. Black, 50x30x20cm, 100w, 2-way reflex, £35.00 for the pair. Telephone 01258 837921 for more information.

## Professional Arboriculture



All aspects of tree and hedge work undertaken

24 hour emergency call out

Free quotes

Fully Qualified & Insured

Proud members of

**Checkatrade.com**  
Where reputation matters

**Tel: 01929 472294**

**Mob: 07782109433**

[www.purbeckarborists.co.uk](http://www.purbeckarborists.co.uk)

## PURBECK AERIALS

SKY - SMART TV - WALL MOUNTED TV

FREESAT - EXTRA POINTS

**RICHARD HARVEY**

**07976 222887 / 01929 553705**

**SAME DAY SERVICE**

**FREE QUOTES - OAP DISCOUNT**

[www.purbeckaerials.com](http://www.purbeckaerials.com)

**"I am local"**

*Selling a car? Can't face the . . .*



***hassle?***

We buy cars, bikes, campers and vans for cash at a time to suit you. Trading in elsewhere? We can usually offer more . . .

Halcyon Motors, now based in Milborne St. Andrew, is a small, friendly business and we will happily come to you. Impartial advice comes free!

Buying? Visit [www.halcyonmotors.co.uk](http://www.halcyonmotors.co.uk) to see "warts and all" descriptions and photos of our current stock. Warranties with all cars. Part exchange welcome. Call Don MacLeod 01258 839209 or 07782 189555 (Mon - Sun, 8.00am - 9.00pm)

## D & J'S COLLECTABLES AND BRIC A BRAC

15A Milborne Business Centre  
Blandford Road, Milborne St. Andrew

Open 10.00am to 4.00pm Thursday,  
Friday and Saturday

ONE MAN'S TRASH IS ANOTHER  
MAN'S TREASURE

Come in and have a look around.  
You never know what you might find

Phone 01258 839211

## GERRY'S PLANTS

**Shrubs – Perennials – Rockery**

**Herbs – Vegetable – Soft-fruit**

**Basket – Bedding plants**

**12 The Rings**

**Milborne St. Andrew**

**Blandford, Dorset DT11 0HY**

**Tel: 01258 837386**

# Heathcote House

GUEST  
ACCOMMODATION  
Tel: 01258 837219

Heathcote House is a lovely Grade II listed guest house right in the heart of Milborne St Andrew. We offer a warm welcome and friendly service, all rooms have king size beds, en-suite bathrooms and are tastefully refurbished to a very high standard.

- Aga cooked breakfast served in the conservatory under an old grape vine.
- Guests drawing room with big comfy sofas and log fires in the winter.
- A secluded garden with delightful seating areas.
- The perfect place from which to explore Dorset's unspoilt countryside and famous Jurassic coast a few miles away.



Heathcote House, Milborne St Andrew, Dorset DT11 0JG. Website: [www.heathcotehouse.co.uk](http://www.heathcotehouse.co.uk)

## Focus on Small Businesses in MSA

### MSA Cars, The Garage, Dorchester Hill

JON RIDDLE, for three years proprietor of MSA Cars, left a lucrative position in the defence industry as a business development manager having reached the point at which he decided to become his own boss. It took 18 months, after opening the doors, to get ship-shape and have the office looking as it does now. This was, as he says, in the depth of the recession starting from scratch with a liking for and knowledge of, cars and an extensive grounding in sales. February has been a good month with three cars sold in the first two weeks despite the recession and the fact that November to March is a quiet time across the motor industry. All of his savings were ploughed into the business and, although only some of this money has been recouped, he does not owe any to anyone. A man with a positive outlook, he says it is 'good to be himself'. It is the time of year when people only buy cars out of necessity. Many families still affected by the downturn are holding onto cars longer than before. He buys direct from trade and from individuals. Jon emphasises that he is always willing to do part exchange and to source particular models that his customers want.

He comments that he has to be 'canny' in what he buys and that the whole enterprise has been a huge learning curve. One of the most important lessons he has learnt is not to be afraid to ask for the purchase money. Most customers accept that he has a family and mortgage to support and will pay promptly. But he will always understand and be flexible to help those who are cash strapped. The most important skill in his job he believes is to be a 'people person' as most customers, although using the Internet, prefer to deal direct with a human being. Whilst he sells used products with a level of liability on the warranty side, he never lets anything out that is not safe and reliable. He states that he does his best to be fair, always putting himself in the customer's position. His favourite marque is Jaguar but his own is currently for sale on the forecourt as he has been too busy to drive it!

He, his wife and 13 year old son have lived in the village for nine years and are well known due to his long involvement with Milborne Players pantomime performances. Jon does not underestimate what a big step this has been for himself and his family. In hindsight he feels he could, perhaps, have planned the change better allowing more time for work and adjustment. He is aware that there are still improvements to be done, such as resurfacing the forecourt, but these things are for the future when trade becomes more profitable. Since opening the business, he has sold 200 cars. Passing trade accounts for 25 per cent of sales but the majority are to villagers from Milborne and the surrounding area. He prepares cars for sale but passes over the servicing to other local businesses whose speciality this is. This is a one-man business, he is a sole trader. He cleans, tidies up and sells cars, hunts for a 'good smattering of small low mileage vehicles; family diesels and estate cars'; attends auctions and manages his office alone. Among his most useful sources at present are ex-motability cars. They are the second biggest fleet business, all clean, low mileage stock, 700 vehicles available a week.

He describes his daily activities as a 'balancing act' with time, money and customers on one side, his family commitments and responsibilities on the other. As he wryly comments, 'it's not all champagne and flowers'. Although he enjoys it and is currently experiencing a tough time, knowing he will not see ten cars on the forecourt for at least six months, that he has to pay 20 per cent VAT on every car he buys or sells his message to all readers is, 'I am open, come and see me - don't assume that what you see on the forecourt is all I have'. Motability have 1,000 cars available; only one, two or three years old with low mileage and a good service history. He doesn't, yet, offer finance but in his words 'You can't eat a whole elephant at once'.

Carole Fornachon

View the Reporter each month in colour at  
[www.milbornestandrew.org.uk/Reporter/index](http://www.milbornestandrew.org.uk/Reporter/index)

## Alert: "We are holding a parcel in your name" scam postcards delivered to resident's homes

SCAM postcards are being delivered to UK residents' homes claiming that a parcel containing "jewellery" is waiting for the homeowner.

### The personally addressed postcards say:

"The office is attempting to reach you. To claim this parcel and accept this offer, you must telephone the number below immediately and arrange for a delivery. The item is prepaid, but a processing and delivery free of £10 must be remitted. This fee can be paid only by telephone and only with a credit card (VISA or MasterCard). This is your only notification"

If you call the 020 number you are asked to pay £10 by credit card. Victims who have reported this to Action Fraud have said that the automated service told them the package would be delivered the same day, but did not receive anything.

Action Fraud has received several reports of this recently occurring fraud and this information has been assessed by National Fraud Intelligence Bureau (NFIB) resulting in disruption of the fraudster's phone number.

Also be on the lookout for slight variations of this scam - which use different phone numbers and delivery items.



### Protection and reporting advice

If you receive one of these postcards:

- Do not call the number provided.
- Do not give your card details.
- If you receive a delivery card through your letterbox which you do not believe is genuine and which asks you to dial a premium rate number, you can contact PhonepayPlus on 0800 500212 (Monday-Friday, 8.00am-6.00pm) for further guidance.

If you receive one of these delivery cards, do not pay any money and report it to Action Fraud by calling 0300 1232040.

## Dorset's wildlife needs your help

Are you good with people?

Enthusiastic about local wildlife? Looking for work that is flexible and with a great rate of pay? If so



South West Wildlife Fundraising Limited (SWWFL) is looking for self-motivated people to recruit members for Dorset Wildlife Trust at pre-booked retail stores and shows within the County. Hours negotiable. We welcome applicants of all ages. Sales experience an advantage. Access to a car essential. For a Job Description or more information go to:  
[www.dorsetwildlifetrust.org.uk/memrec](http://www.dorsetwildlifetrust.org.uk/memrec)

# A Darby Building Services Ltd



All Types of Building Work Undertaken;  
New Builds, Extensions,  
Structural Alterations, Kitchen,  
Bathrooms

Telephone: 01258 470151  
01305 757162

Mobile: 07974 260938

Email: adbsltd@gmail.com



## Dorset Carpet Care

cleaning with care

Dorset Carpet Care is a local, family run business specialising in the cleaning and restoration of carpets, rugs soft furnishings and stone or tiled floors, in homes and businesses throughout Dorset.

We use various technologies including the latest truck-mounted hot water extraction system that can clean deeper and more effectively than other methods.

We belong to the NCCA and ICRC, which means we are fully qualified, honestly priced and our services come guaranteed.



- ✓ hot water extraction deep cleans
- ✓ removal of stains and smells
- ✓ stain protector application
- ✓ treatments for allergies and pests

Call Andrew or Joanne  
on 01258 837092

[www.dorsetcarpetcare.co.uk](http://www.dorsetcarpetcare.co.uk)



# WOODS

(DORCHESTER) LTD

# Funeral Directors

Established in Dorchester since 1878

## Monumental Masons

AVAILABLE 24 HRS A DAY

Paul R. Gawler M.B.I.E. Dip.F.D. M.B.I.F.D.

Pauline J Guy Dip.F.D. M.B.I.F.D.



**DORCHESTER 01305 250425**



# The Causeway Flood Relief Works

MOST Milborne residents will have noticed the closure of The Causeway just down from the village hall. Whilst this is an inconvenience, in particular for those who live alongside the works being carried out, it is in fact good news! The disruption is being caused by the installation of a new type of drain to help alleviate the flooding that the village is prone to suffer.



Regular readers may remember the articles written by Steve Lord, the village flood warden that were published in the March and May 2014 editions<sup>1</sup> explaining the causes of the flooding. Essentially, the location of the village will result in water flowing through the village. However neglect of the drainage system over the years has seen drains being allowed to silt up or being blocked off altogether. Combine this with groundwater from new housing developments feeding into the old drains and the system on the Milton Road can't cope.

The works carried out in the Milton Road last autumn should alleviate that problem. New larger drains have been installed to increase capacity, along with watertight manhole covers to prevent floodwater entering and back filling sewer pipes. The sewer pipes themselves are planned to be fitted with monitors. If the monitors detect that the sewers are overfull, tankers will be used to pump out and remove the excess. But in the mean time, residents affected must phone the flood line. The village has also been given the option to call for a high capacity pump if and when needed to remove water from the Milton Road as was done in the 2014 floods.

But the problems don't end there. The water in the Milton Road needs to cross the main A354 into a culvert and flow away from the village via the Bere which runs alongside The Causeway. For some strange reason there was only one small pipe crossing the main road and feeding the culvert. This would not have enough capacity, essentially damming the water in Milton Road in. It was discovered by the our now retired parish councillor Mike Hopper that there are in fact three major drains across the A354, but for reasons unknown they were unconnected but this was rectified!

That just left the need to increase the capacity of the Bere along The Causeway to prevent the water backing up and causing flooding. Keeping the Bere free of obstructions helps, but is not enough on its own. This is why the work along The Causeway has been undertaken.

So what is being done along The Causeway? Well, a large channel is being dug along it's length. This channel is then lined with preformed concrete sections and covered over with concrete slabs which have integrated drain holes. The road surface will be lowest in the middle as opposed to the normal highest in the middle. There are also pipes connecting from the bank of the Bere through to the new channel. The channel then reconnects to the Bere some metres past the junction with Church Hill. Thus, when the Bere along The Causeway starts to rise, water will be diverted into the new channel. Likewise any excess surface water will enter the channel via the drain holes in the road. Using this solution, the rate at which water can be removed from The Causeway will be greatly increased. The

excess water will then re-enter the Bere, spilling over to the flood plain to the west of the village if necessary. Thanks to additional work by Mark Frampton of Manor Farm to clear obstructions in the Bere as it crosses his land, this flooding should be kept to its minimum.

How was this solution arrived at? It was acknowledged during investigations in the summer 2014 that The Causeway should have a drain to alleviate not only surface water, but also to encourage river/flood water through the village quicker. The solution arrived at was proposed entirely by all the agencies involved. The decision to proceed was taken jointly by the professional engineers. This project has been designed, financed and initiated by a Memorandum of Agreement between the Environment Agency, Highways and Flood Risk Group DCC as a result of the Flood risk Report 2014/15 that highlighted Milborne ONLY as having a major problem of SURFACE water (not ground water). The funds have come from DEFRA, central Government grants and discretionary grants in DCC. It is innovative and combined with the drains on Milton Road form a contiguous drainage system for the whole valley. Its implication on wildlife such as the water voles and fish plus any impact on the local environment have all been approved by the Environment Agency and no work has impinged on any wild life in the village. Its costs and specification are confidential. However, it has attracted the attention of national TV (ITN), as well as Radio Solent keeping a 'watchful eye' and could provide a role model for the other 30 communities who did not 'kick up a fuss!'



It should be noted that all this does not mean an end to the risk of flooding in Milborne, and the need for the village to pull together and help each other as we have done in the past. What it does mean is that when flooding does occur it should not be as severe and any flood waters should disappear far quicker than they have in the past.

We are fortunate that Martin Hill from Dorset Highways has gone above and beyond his legal remit to champion this solution and that we have a flood warden who has chased the various agencies to get the project moving. However because of its engineering difficulties there **WILL BE SNAGS**, but Martin Hill's team are confident that the desired result can be achieved. It is natural that in the present time of mud, wet and inconvenience there will be local disturbance but as it will help everyone it is hoped there will be patience and understanding with the workforce who are doing everything in their power to minimise inconvenience.

## Definitions

**Groundwater flooding** – can occur when water levels underneath the ground rise above ground level.

**Surface water flooding** – is caused when heavy rain directly hits the ground surface.

**River flooding** – where a river bursts or overtops its banks and floods the areas around it.

<sup>1</sup>Available online at <http://www.milbornestandrew.org.uk/Reporter/>

Linda and Pete Constant

# Community Contacts

Please let the *Reporter* know if any of these details change

More information about many community organisations can be found on [www.milbornestandrew.org.uk](http://www.milbornestandrew.org.uk)

## COUNCILS

North Dorset District Councillor	Emma Parker	01258 881631
	Jane Somper	01258 471089
Parish Council – Dewlish	Clerk: Sandra Sims	01258 837132
	Chair: Andrew Booth	01258 837284
Parish Council – Milborne St. Andrew	Clerk: Colin Hampton	01258 837011
	Chair: Jenny Balcon	01258 837121
<b>Floods</b> A354 problems contact the Highways Agency		0300 1235000
Dorset Direct		01305 221000
dorsetdirect@dorsetcc.gov.uk <a href="http://www.dorsetforyou.com/reportroadproblems">www.dorsetforyou.com/reportroadproblems</a>		
Environment Agency Floodline		0845 9881188
South West Highways hello@swhitd.co.uk		01404 821500
Wessex Water Sewerage Floodline		0345 8505959

## GENERAL – ADULT

Ladies Group – Dewlish	Judith Bridgen	01258 837157
Moonlight Swing Band	Gillian Pink	01305 260731
M.A. Neighbourcar	Nigel Hodder	01258 881709
Wednesday Social Club	Margaret Evans	01258 450518
Women's Institute	June Maitland	01258 837235

## GENERAL – YOUTH

Hazelnuts out-of-school club	Hazel Barrett	01305 848588
Ladybirds (Playgroup)	Liz Dyer	01258 839117
Scout Group	Mike Mullett	01258 837114
Secretary:	Brian Burton	01258 839033
Under 5's Group – The Busy Bees	Wendy Britton	07867 720283
Youth Club age 8 – 14 years	Lianne Summers	01258 839081

## POLICE

Police – Non-emergency contact		101
Community Beat Officer	PC Dave Mullins	101
Safer Neighbourhood Team	PC Dave Mullins and PCSO Luke Goddard	101

## SCHOOL

Milborne First School		
Headteacher:	Sharon Hunt	01258 837362
Chair Governors:	Kevin Connolly	
Friends of School Chair:	Becky Hunter	

## SPECIAL INTEREST

Cribbage	Peter Anthony	01258 837089
Bellringers	Pip Howell	01258 837329
Bridge Group	Laurie Benn	01258 837720
Food and Wine Society	Julie Johannsen	01258 839004
MSA Allotment Society Chair:	Jo Lovett	07960 854155
Secretary:	Sue Gould	01258 837575
MSA Friendly Art Group	Elaine Anthony	01258 837089
MSA Gardening Club	Richard Lock	01258 837929
Milborne Players	Roy Sach	01258 837033
Modern Sequence Dancing	Brian Webber	01935 812347
Ranters' Folk Session	Roger Harrall	01258 837371
Round Robin Ramblers	Ian Bromilow	01258 880044

## SPORT

Abbey Swimming Club	Pat Cowan	01258 880601
Archers – Crossways	Sheila Ryall	01258 837504
Athletics – Junior	David Pearson	01258 837057
Badminton	David Payne	01258 837700
Circuit Training		01258 837700
Cricket – Dewlish	Elaine Kellaway	01258 837696
Cricket Club – Milton Abbas	Colin Chastey	01258 882162


Football – Adult	Matt Hall	07846 262717
Football – Reserve Team	Tom Lane	07786 156335
Football – Minis	Nicola Malone	07788 217579
Pilates	Claire Barratt	07540626174
Running Group	Anne-Marie Pearson	01258 837057
Skittles – Dewlish	Frank Ross	01258 837366
Sports Club Chairman:	John Sanderson	01258 837049
Bookings:	Dean Hamilton	01258 837370
Table Tennis	Pauline Pitfield	01258 839123
Tap Dancing for Adults	Libby Goodchild	01305 268029
Tennis	Dennis Nelson	01258 837734
Tennis (Members Secretary)	John Sanderson	01258 837049
Yoga (at school)	Sue Chapman	01305 848053
Yoga (at village hall)	Sarah Ryan	01258 839230

## VILLAGE HALL

Dewlish		
Chairman/Secretary:	Alex Carter	01258 837312
Milborne St. Andrew		
Chairman:	Paul Tasker	07801 714619
Booking Secretary:	Sandie Sach	01258 837033

## HEALTH

Bere Regis Surgery		01929 471268
Milborne St. Andrew Surgery		01258 837383
Milton Abbas Surgery		01258 880210
Puddletown Surgery		01305 848333
NHS for emergencies		111
Patient Voice Secretary	Nigel Hodder	01258 881709




### Milborne Movies


Friday 20th March 2015  
at 7.30pm

Doors and Bar at 7.00pm

Supported by




Eileen Atkins   Colin Firth   Marcia Gay Harden   Hamish Linklater   Simon McBurney   Emma Stone   Jacki Weaver



## Magic

## In The Moonlight

A Film by Woody Allen



Tickets £3.00

Milborne St. Andrew Village Hall



# Community Events Diary

Add your event to this diary by contacting the **Reporter** – tel: 01258 837700 or email: msa.reporter@yahoo.co.uk

<b>March</b>	
<b>Wednesday 4th</b>	<b>Wednesday Club</b> Bingo Village Hall 2.00pm – see page 9.
<b>Friday 6th</b>	<b>Friday Coffee and Share</b> Village Hall Committee Room 9.15 to 11.45pm – see page 3
<b>Saturday 7th</b>	<b>Maria Gayton</b> will give an illustrated talk in St Andrew's church to explain what sources of historical information are available – see page 5.
<b>Thursday 12th</b>	<b>WI Anita Law</b> will talk about 'Watercolour Painting'. Village Hall 7.30pm – see page 29.
<b>Saturday 14th</b>	<b>Reporter</b> latest date for the April issue. Send your items to msa.reporter@yahoo.co.uk or give to a member of the Reporter team.
<b>Sunday 15th</b>	<b>Mothering Sunday Service</b> Milborne St Andrew's church 9.30am – see page 7.
<b>Wednesday 18th</b>	<b>Parish Council</b> Village Hall Committee Room 7.30pm – see page 23 for notes on February's meeting.
<b>Thursday 19th</b>	<b>Gardening Club</b> Wildlife of Hants and Dorset by Brian Pettit Village Hall 7.30pm.
<b>Friday 20th</b>	<b>Magic in the Moonlight</b> Village Hall 7.30pm – see page 16 and below
<b>Saturday 21st</b>	<b>The Mystery of the Rose Bouquet</b> Village Hall 7.30pm – see pages 22 and 23.
<b>Saturday 28th</b>	<b>Village Lunch</b> Village Hall 12.15pm. Everyone welcome. Tickets and information from 839090 or 837543 – see page 2 for menu.
<b>Tuesday 31st</b>	<b>100 Club Draw</b> The Royal Oak everyone welcome to attend.

## Magic in the Moonlight (PG-13)

shown by 'Milborne Movies'  
on Friday 20th March at 7.30pm  
in Milborne St. Andrew Village Hall

MAGIC IN THE MOONLIGHT, written and directed by Woody Allen, is set in Southern France in 1927. Colin Firth plays the cantankerous Stanley, a super rational British magician working disguised as the Chinaman, Wei Ling Soo. He is also an expert at debunking all kinds of psychic. His friend and fellow illusionist, Howard (Simon McBurney), pops backstage after a show in Berlin to persuade Stanley to travel to the French Riviera and investigate an attractive female American clairvoyant called Sophie (Emma Stone). Sophie is promising to put an elderly rich widow, Grace (Jacki Weaver), in touch with her late husband at a séance at her south of France mansion. Grace is so enchanted with her guest that she's promising to fund her institute of psychic study. No one has ever got one up on Stanley before, but he simply can't work out how Sophie seems to know things she couldn't possibly know. Her powers continue to draw him in until he starts to question his sceptical beliefs, reassesses his life and begins to wonder whether magic could be real after all. Is she a fraud or genuine? As he investigates her extraordinary talents, he falls in love.

The film was lovely, crisp and concise, every line of dialogue delivered as if to a theatre audience. The plot is wonderfully and succinctly woven and the casting of the female characters is excellent. The soundtrack is taken from jaunty jazz staples of the era and the cinematography by Darius Khondji is stunning, along with attention to detail in the costume, music and mannerisms of the era. *Magic in the Moonlight* certainly captures the elegance of the time, making it one of the most beautifully shot films of 2014.

The village hall and bar is open from 7.00pm and the film starts at 7.30pm. Tickets £3.00 can be obtained on the door.

## Regular Bookings at the Village Hall

**Ladybirds Playgroup** Monday–Friday 8.30am–1.00pm MH (term time only)  
**Beavers** Monday 5.00–6.30pm MH (term time only)  
**Scouts** Monday 6.00–8.00pm CR/MH  
**Players** Monday 8.00–10.00pm MH  
**ABC Line Dancers** Tuesday 7.30–10.00pm MH  
**Cub Scouts** Tuesday 5.45–7.15pm MH (term time only)  
**MSA Friendly Art Group** second and fourth Wednesday 7.00–9.00pm CR  
**Wednesday Club** first Wednesday 2.00–4.00pm MH  
**Yoga** Thursday 1.30–2.45pm MH  
**Gardening Club** third Thursday 7.30–10.00pm MH  
**Karate** Thursday 5.10–6.40pm MH  
**Village Hall Committee** third Thursday every two months 7.30–10.00pm  
**Women's Institute** second Thursday 7.30–10.00pm  
**Cake and Coffee** Fridays 8.45–11.45pm CR  
**Youth Club 8–14 years** every other Friday MH (term time only)  
**Village Lunch** last Saturday of the month 12.15–2.30pm MH  
**Sequence Dancing** third Saturday 7.30–10.30pm MH  
**Artsreach Events** – look out for the posters.

Check Village Hall Notice Board for any other events that are one off for you to join in with.

## Regular Bookings at the First School

**Pilates** Monday 7.00–8.00pm (term time only)  
**Yoga** Tuesday 6.15–7.45pm (term time only)  
**Badminton** Wednesday 7.00–8.30pm (term time only)  
**Circuit Training** every Thursday 7.00–8.00pm

## March at the Sports Club

**Table Tennis** Monday 7.00–9.00pm. Information from Pauline Pitfield 01258 839123

**The Busy Bees** Under 5 Group from 9.30am to 11.30am on Thursday term time only. Contact Wendy Britton on 07867 720283.

### Milborne Mini Soccer

Our training sessions will be altering slightly with all training sessions on a Wednesday night, and additional training for next year's under 11's on a Saturday morning. Matches will be played on Sunday morning and afternoons.

Under 11s Stuart Joyce 01258 456594.

Under 8s Nicky 01258 837919.

Under 7s Nicky 01258 837919.



*Please let the Reporter know if there are any alterations to this list or you would like something added.*

## Milborne 100 Club

1st PRIZE £100      2nd PRIZE £50

3rd PRIZE depends on number of members paid

For only £1 a week you can have three chances for a prize in every draw (minimum £5.00)

*Please make cheques payable to*  
MSA FC and Church 100 Club

For information contact:

John Sanderson    Football Club    837049

June Maitland    Church    837235

Denise Sanderson    Collector    837049

# Kens Kabs

Lady Driver & 6 Seaters Available  
Local and Long Distance Travel  
Airports are our Speciality

**01258 456136**  
**www.kenskabs.co.uk**

**TRAVEL SAFELY IN OUR HANDS**

In need of a Window Cleaner?

**Darren and Sarah**

for a friendly and reliable service

**Clear Vision**



Fully insured for complete peace of mind

For that clearer vision just call:

**01929 462273 / 07704 656777**

or email: [clearvision1996@hotmail.co.uk](mailto:clearvision1996@hotmail.co.uk)

Domestic and Commercial  
Gutters Downpipes Facias Soffits  
Conservatories Flash Roofs

# JURASSIC — COMPUTERS —



*The incredibly friendly  
computer people*

Call Darrell Hounsome or Lee Thompson for  
jargon free, patient, friendly computer help  
for home and business users.

*Whatever your computer problem, call us... we can help!*

**01305 755668**

Repairs • Servicing • Sales • Training • Virus Removal

Email: [info@jurassic-computers.co.uk](mailto:info@jurassic-computers.co.uk)

Web: [www.jurassic-computers.co.uk](http://www.jurassic-computers.co.uk)

*Are you ready for a new PC or Laptop? If so, come and see us.  
We offer a complete service and will guide you through the whole  
process. We can supply, update, set-up and then transfer your  
documents/emails from your old system. We will give you the  
benefit of our combined 37 years experience gained whilst  
working for Kingston Maurward College in Dorchester.*

PROSPECT HOUSE, PEVERELL AVE EAST, POUNDBURY, DORCHESTER DT1 3WE

*Fine Used Car Sales in the Heart of Dorset*

*We Sell Cars • We Buy Cars • We Can Source Your Next Car*

The Garage, Dorchester Hill, Millborne St. Andrew, DT11 0JG

**MSA  
CARS**

For details of our current sales stock, to arrange a  
test drive or just to ask advice, call Jon

**01258 837096 / 07557 104150**

**Open Tuesday —Friday 10am—6pm**

**Saturday 10am—5pm**

**Rear Parking Sensors**  
**Colour Coded to your car**  
**FITTED for just £130 (plus VAT).**  
**Call to book an appointment!**



[www.MSAcars.co.uk](http://www.MSAcars.co.uk)

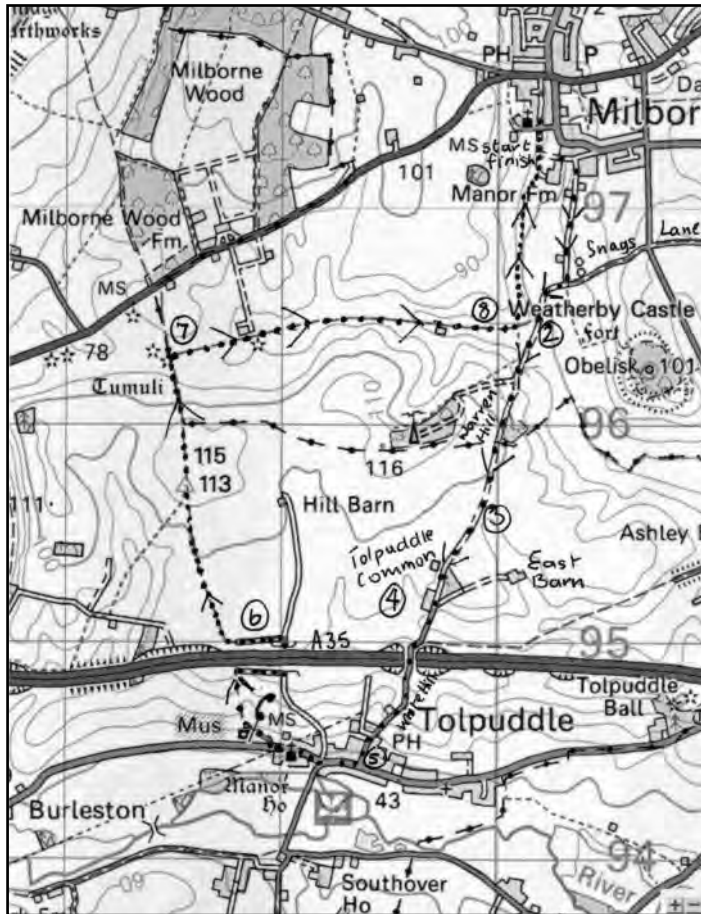
# Circular Walk—Milborne St. Andrew to Tolpuddle and back

**Level:** Easy walking with two short but steep hills, one up to the road bridge and one up the lane from Tolpuddle.

**Length:** 8.720km: 5.4miles

**Time:** Approximately 2-3hrs depending on walking speed, without stops.

This description is best supplemented with OS Landranger map, Dorchester and Weymouth no.194 or OS Explorer/Active Map, Cerne Abbas and Bere Regis no.177 or mobile phone App. View Ranger. Tolpuddle village is believed to have taken its name from a female



benefactor to the Abbey at Abbotsbury to which the village belonged in Edward the Confessor's time. She was known as Tole or Tola. It is famous for the fate of The Martyrs, farm workers who formed a Union when their wages were docked by two shillings. This in itself was not illegal, but they were prosecuted under The Mutiny Act 1797 which forbade the administration of 'unlawful oaths' and were transported to Australia.

**1.** Take the gate at the intersection of Church Hill with Chapel Street. Turn left at the remains of the old Manor Farm gate pillars past the cottages on the right and a small river bridge on your left. Take a right at the large barn in front of you through a new metal gate. Continue down Manor Farm lane bearing right at the intersection with Snags Lane on your left and through the waymarked wooden pedestrian gate. (1.1km)

**2.** It is often very muddy here even in dry weather. Cross a miniature ford (which comes and goes) and continue straight ahead up Warren Hill in front of you keeping to the left of the telegraph poles with a belt of trees (and the way back) immediately to your right and a lovely view of Weatherby Castle on your left across fields. There is a waymark on a post to your right and unfolding views on the left with a glimpse of the bending river below. Turn back to look at Milborne village. Motorbike scramblers regularly use Warren Hill. (1.317km)

**3.** You will pass among a small area of trees through a waymarked metal gate leaving through empty gateposts. The panoramic view when emerging from the trees to level ground is worth stopping to admire with just a glimpse of traffic on the A35. There will be a hedge to your

right. Go through the open gate in front of you. (1.690km)

**4.** Continue across Tolpuddle Common with a hedge and fence changing to conifers on the left when the path will begin to take a downhill turn with, firstly two large new barns on the right and East Barn to your left and right. This is often extremely muddy and sometimes populated with mud-caked cows. Continue uphill on a metalled surface and over the road bridge spanning the A35 Tolpuddle Bypass. It is a salutary lesson to stop awhile and contemplate the excessive speed everyone seems to be doing beneath your feet! Often deer and horses can be seen grazing on the top fields. (2.510km)

**5.** Walk down Whitehill, which is very steep and long to the main road, which runs through the village. There is an interesting view from the top directly ahead, of Southover House on the opposite hill. Spring flowers are abundant on the verges. Once on the main road, to your left is the Tolpuddle Martyrs Inn, which could afford a stop for refreshments. Otherwise turn right and walk for a short way past both old and new build cottages onto a narrow pavement close to very old cottages with the church across the road on your left. *It is worth taking time to cross the road to see the Martyrs tree and TUC cottages, a millrace and Manor House by the river.* You will come to a narrow opening to a footpath on your right signed 'Bridleway to Dewlish' on an old faded wooden post. If you reach the Tolpuddle Martyrs Museum you have gone too far. You will pass back gardens on your left with cultivated open fields to the front and right. The lane bears right through trees. It is quite overgrown, high sided and dark in the summertime. Beware; this is a favourite place for dog-walkers, watch where you place your feet! It goes up hill to a waymarked gate where you bear right alongside the main A35 on your left the other side of a hedge and good views to your right. (4.130km)

**6.** This necessitates a left turn after a farm gate underneath the A35 and then left again. Follow the, new, bridleway signs. Open, cultivated fields will be on your right and the main road on your left (again the other side of a hedge) for a short while. Then right following the, 'Dewlish' sign, to take a diagonal path initially across open fields towards a gap in the hedge ahead. There is a copse of trees to your left on a hill, where, often, shooting parties are hunting pheasants. So take care! There will be a hedge on your right. The path goes uphill to a waymarked open gate level with the copse and a view of the Dorset Gap. It then descends into a sunken lane known as Lord's Down, between old trees with large badger sets. (5.640)

**7.** Continue on until a waymarked post on the left and an opening on the right into a field. Turn into the field. It is quite hidden so take care not to bypass it. Again deer can often be seen in large numbers on your right upon the hill. There is a hedge on your left the entire time. You will pass some ruined farm buildings and a collapsing rusty corrugated iron barn over the hedge. This is West End Barn. When the hedge stops you take a left down a bank at the end and through a gate immediately on your right. Continue straight ahead with open fields on your left, individual trees and fences on your right. (6.570km)

**8.** You will see on your right as you come to a new wooden waymarked gate, a collapsed corrugated barn. Go through the gate. The path continues next to the left hand hedge until another wooden gate brings you to the belt of trees passed earlier at 2. Instead of joining the original path take a left turn around the tree to a stile. Pass through and follow the, initially elevated, footpath by the stream to your right until you reach the gateposts into the lane next to the old Manor Farm house with your starting point gate ahead of you. This is the end of your walk. (8.720km)

**Footnote:** If you wish to visit the Tolpuddle Martyrs Museum the opening hours are: Closed Mondays April to October; Open 10.00–5.00 Tuesday to Saturday; Sunday and Bank Holiday 11.00–5.00. Winter: November to March: closed Monday, Tuesday and Wednesday. Opens at 10.00–4.00. Sunday 11.00–4.00. Closed between Christmas and the New Year.  
Carole Fornachon

Tel: 01258 837352

enquiries@oakpub.co.uk

THE OAK



at  
Dewlish

At The Oak at Dewlish, we pride ourselves in serving a regularly-varying range of real ales. We also want you to enjoy every mouthful of our food. This is why we strive to bring you delicious dishes that combine the best of English pub food, with ingredients from the local farms and nearby producers.

We have 4\* self catering accommodation and 2 newly furnished ensuite B and B rooms.

www.oakpub.co.uk

## Pancakes at Ladybirds

IT'S that time of year again – pancake day. So as not to miss out, with pancake day falling in half term this year, Ladybirds enjoyed the annual treat a week early. As you can see some use all their strength and height to toss the pancake as high as they can – luckily none got stuck to the ceiling. All children had an opportunity to toss the pancake – this was a small slightly thicker one used just for tossing.



We enjoyed some much cleaner ones at snack time.

This month has seen lots of action around and about the Hall with what seems like never ending roadworks that some of the children enjoyed watching. Then additional stage and props for the annual village pantomime followed by a very large hall without any staging led us to adapt our play activities to suit the situation. We were able to do our own performances on the large stage and have larger physical activities in the bigger room. The children liked having the big den frame and the wooden climbing frame house with slide inside for a change. Outside the children have searched for birds marking them off on charts. Although some improvised music being played on flowerpots and old saucepans was enough to frighten any wildlife away.

Advance notice we will be closed on Thursday 7th May – General Election day – when the hall is used as the polling station.  
*Liz Dyer*



Milborne Ladybirds Playgroup

Ofsted registered no.217717

Registered Charity no. 1087441

We offer a high quality preschool experience for children aged 2 years to school age for Milborne St Andrew and the surrounding area

All Children are treated as individuals with exciting activities based on their interests.

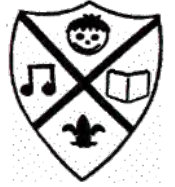
Highly qualified staff aim to challenge children to achieve their potential

Opening times  
Early Birds 8.30-9.00  
Session 9.00-12.00  
Lunch Club 12.00-13.00

To find out more please contact  
Liz Dyer (Leader) 01258 839117 or 07771 512427  
Lucy Bishop (secretary) 07866 267044  
[www.milborneladybirds.org.uk](http://www.milborneladybirds.org.uk)



# Milborne St. Andrew First School



Learning together, playing together;  
all for one, one for all

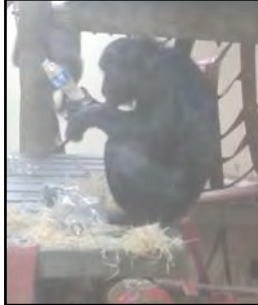
## School News

### Scientists take over First School!

If you visited Milborne First School week commencing 2nd February, you would have noticed that most of the children had been replaced by young scientists! White 'lab coats' had covered school uniform in most classes and there was an excited buzz of investigation around the school.

During the week children answered a huge variety of questions; for example, 'How can I make the blue tack float?' 'What happens to a jelly baby when it's left in water?' 'How can you make the cornflake fly further?' or 'How will the height a meteor falls from affect its impact?' Apart from the many exciting investigations that were happening in the classrooms we also had a few visitors.

On Tuesday morning, Rebecca, a



solving as much as we do and so we all made a bottle or sock 'toy' in which nuts, fruit and seeds were hidden amongst straw. We have already seen photographs showing how interested they are in these.

We also had a visit from Mr Daley, our sports coach, showing us how our bones, joints and muscles work and how we use them when we are active.

One of the most hair-raising visits was from Chemical Cress and her Van der Graff generator! She will be starting an exciting science club after half term.



representative from Monkey World, visited each class and talked about the important work they do there. We discovered that monkeys like problem

We rounded off the week with a science fair in the hall, organised by Key Stage 2. Reception and Key Stage 1 were invited in to predict, try out and watch an amazing selection of investigations.

Thank you to all of the parents who helped or demonstrated during the week, we really appreciate your involvement. Thank you to Milton Abbey School for the loan of microscopes, your support is much appreciated.

Our aim of the week was to raise the children's understanding of an investigative approach to scientific discovery and deepen their scientific knowledge and skills . . . and have a lot of fun!!

I think we achieved that!!



## CONTACTS

If you require any information about the school, including admission details or would like to arrange a visit please ring Mrs Pearcey in the school office

**Headteacher:** Mrs Sharon Hunt      **Secretary, School Office:** Mrs Lynn Pearcey

**Chair of Governors:** Mr Kevin Connolly      **FOS Chairman:** Mrs Becky Hunter

e-mail: office@milborne.dorset.sch.uk      website: www.milborne.dorset.sch.uk      Tel: (01258) 837362      Fax: (01258) 837170



## Chris Perrins Chimney Sweep

Solid fuel stove installer

Flue relining  
Fire place alterations  
Chimney repairs  
Cowls fitted



01305 849470

07824 698109

csweep.co.uk

cfperrins@tiscali.co.uk

OLD BARN  
DENTAL PRACTICE LTD



Mr John Woodward BDS. (Hons.) U. Lond. LDS RCS  
GDC No: 42991

**Modern, cosmetic and restorative  
dentistry in a friendly atmosphere**

Manor Farm Road Bere Regis  
Wareham Dorset BH20 7HD  
Telephone: 01929 471023  
Email: oldbarn@tesco.net

**SMALL WORLD  
THEATRE**  *plays on your doorstep*

presents a play by Manuel Puig

*The  
Mystery  
of  
the  
Rose  
Bouquet*

by Manuel Puig  
translated by Allan J. Baker

Bourton Village Hall - 14 February	Lifton Cheney The Latch - 28 March
Charmouth St Andrews Hall - 28 February	Langton Matravers Hall - 25 April
Powderstock Hut - 7 March	
Whitchurch Canoncorum Hall - 14 March	All at 7.30pm
Milborne St Andrew Hall - 21 March	Tickets £8 from 01297 488978 or on door

# COLIN J. CLOSE FUNERAL SERVICE

*A family run business, serving the local  
community of Blandford  
and surrounding villages*



[www.close-funeral.co.uk](http://www.close-funeral.co.uk)



Office and Chapel of Rest  
Peel Close, **BLANDFORD FORUM**, DT11 7JU  
email: [info@close-funeral.co.uk](mailto:info@close-funeral.co.uk)

**Golden Charter**  
Funeral Plans 

**Tel.**  
**01258 453133**  
**(24 Hours)**

# Clever Sleuths Wanted

## Solve the Mystery of the Rose Bouquet!

PROFESSIONAL theatre company SMALLWORLD THEATRE challenge audiences to answer some simple riddles during their tour of The Mystery of the Rose Bouquet by Manuel Puig to Dorset villages early in 2015.

Puig, the famous Argentinian playwright writes in the tradition of South American realism and intrigues his audiences with his blend of dream, illusion and reality. But beneath it all lies the truth! But whose truth? What is the Mystery of the Rose Bouquet?

Audience members can give their own solution to the mystery at the end of the show. These will be judged by an impartial judge and a prize awarded for the best answer at the end of the tour.

Test your detective skills at Milborne village hall on 21st March and also Charmouth (28th February), Powerstock Hut (7th March), Whitchurch Canonorum (14th March) and Litton Cheney (28th March). All performances commence at 7.30pm.

# Notes from the Parish Council

Wednesday 18th February

MS Joy Robinson of Neighbourhood Watch was co-opted onto the Parish Council following apologies and the acceptance of last meeting's Minutes. The NDDC Cllr Ms Sumpter reported 'mischievous' complaints on two Planning Enforcement notices relating to listed building within a Conservation Area. These were anonymous as is allowed for confidential reasons but caused 'upset' and had a knock on effect. Mr Hopper mentioned the next two *Open Days* to discuss the *Neighbourhood Plan*. These are *Saturday 21st March* and *Friday 17th April 10am-3pm*. The Parish Clerk reported on the follow up to *Public Sessions* by recounting a journey down Lane End with Cllr Cox (DCC) on 28th January. They considered the condition of the road was good except for the crumbled edges in 'lay-bys'. It was suggested that representation be made online to the CC by the complainant. Ms Maitland had inspected *Parish Pit* and discovered that the WI tree had not been felled as previously suggested. It was felt that if the Arborist considered it to be healthy then no further action needed to be taken. *Work in the Causeway continues to cause concern*. A meeting was held with closely affected residents, Martin Hill and Cllr Cox. There was an agreement that the way the drainage was being implemented would be changed, particularly the level and underground services. An email had been received by the Clerk concerned with drainage further down at March Bridge. This had been passed to Mr Hill. It was pointed out that this work was outside the jurisdiction of the Parish Council but the feeling expressed was that representation should be made to the CC to support the residents who were otherwise battling alone. Photographs are taken daily and notes kept. It was commented that at least the water will now be flowing *down* to its proper level, instead of uphill. The gullies are still there but higher than they should be, four inches higher than the current road level. The sides will be built up more than is required. When finished it is estimated it will be 10 inches higher than the previous tarmac surface so that residents will be going *down* into their driveways. Any flood water in future will be deeper and unable to drain back into the road as it has done previously. Outlets are above the highest inlet. A chamber has been built at the Memorial end with 3x300 metre pipes. Lids have been taken off 'the wrong bits'. . . pipes have been installed *not as agreed*'. Ms Hogg had to quickly take photographs to send to Martin Hill within four hours of this occurring. She had asked for the Engineer's drawings and was shown a piece of graph paper with a line on it. Rudeness of the previous Site Manager was attested to by several present. The workers' general conduct and lack of Health and Safety concerns were 'appalling'. It was felt that the slabs will be slippery when wet and particularly when iced over in the frost. In cold weather these will be the first to freeze. This will prove especially dangerous to pedestrians and cyclists. The opinion was expressed that 'It will be worse when it is finished'. Whatever action is taken will not change what is done. (Apparently there will be a programme on this 'experiment' on Channel 5 in April.) Two redundant sewers have been opened up. *All of this without Highways Agency approval*. Stagnant water will persist when water levels are high. The gullies are not sealed, the tops 'wobble'. Comments were made that the work 'should never have gone into the water table'. The high costs and waste of money was highlighted. Ms Hogg is to have a structural survey prepared on the effect this has had on her house and will reclaim its cost from the CC.

The Clerk spoke of a letter received on the *anti-social and speeding behaviour of social tenants* in Fox View. The writer had been advised to write to the Police, her Councillor, the Environmental Officer and to Broadway Housing, Ashley Road, Parkstone. The latter have responsibility for the behaviour of their tenants. Following another letter concerning the *Best Kept Village competition* it was decided not to enter the shop this year as previously.

*Planning Applications agreed were:* a) at Grays Store; six parking spaces, a single storey straw bale dwelling with cedar shingled roof and access from Milton Close. All work to be made good. b) at Laracore, Chapel Street; a three bedroomed 'coach house' with integral garage, a double garage to serve Home Farm House and single storey rear extensions to the existing house, raise the roof and install front and rear dormers. Concerns were however expressed about increased traffic, pressure on the sewer system and design to be in keeping with the conservation area. The new *Fingerpost* to be erected at the junction with Homefield and Lane End was funded by generous donations from four people present of £20 each. *Electronic Banking* was discussed and approved. This will be more convenient for the Clerk than the present system of cheques. This still requires further, Government approval. It will still be possible to have double signatories by alerting the second person to press a button. So two levels of authorisation will persist but Standing Orders will be re-written.

The meeting closed at 9.00pm and the next will be **18th March 2015**.

Carole Fornachon

## Physiotherapist led Pilates class

Starting Friday 16th January  
at Milborne St. Andrew village hall  
5.00-6.00pm, £6 per session

*1:1 sessions also available in the comfort of your own home, contact Sam for more details*

Samantha Buxton (Chartered Physiotherapist  
and APPI trained)

Call Sam on 07500208265 or email  
samp96@hotmail.co.uk to book a place

**Southfield**  
Veterinary Centre

Providing First Class Care for all your Pets

Surgery Dermatology Behaviour Problems Acupuncture  
Homeopathy Pet Passports Physiotherapy



01305 262913  
24hr emergency cover  
www.southfieldvet.co.uk

## 100 CLUB WINNERS

Draw Date – Tuesday 24th February 2015  
Results in the next Reporter

**We are in desperate need for more people  
to join the 100 Club.**

The next draw is at 8.00pm in The Royal Oak,  
Tuesday 31st March 2015

*Everyone is welcome to attend*

**New members always welcome. Contact**

June Maitland 837235 or  
Denise Sanderson 837049

Payments may be made by a cheque payable to  
MSA FC and Church 100 club

*Please speak to Denise Sanderson, Jenny Balcon  
or June Maitland for information.*



# LOGS

Quality Seasoned Hardwood Logs

Small Load £75 and Large Load £160

Kindling and Coal Household/Smokeless

10kg Household £4.50

25kg Household £10.50

20kg Smokeless £13.50



**Tel/Fax: 01258 837377**

Mobile: 07971 276980

## AJV COMPUTING

IT Services for the Home & Small Business

Virus and malware removal • E-mail & broadband setup  
PC & Laptop repairs & upgrades • Wireless networking  
Data recovery • Installations • Troubleshooting

*No callout charge • Microsoft certified*

*Over 20 yrs experience • Prompt & friendly service*

**Tel: 01929 480529**

**Mobile: 07710 835905**

[www.ajvcomputing.co.uk](http://www.ajvcomputing.co.uk)



**Purveyors of the Finest Gardens**

**01935 850848**

**Extend your home and maximise  
your outdoor space**

Consultation  
Design  
Construction  
Ground Preparations  
Water Features  
Turfing & Seeding  
Planting  
Renovations  
Wild Flower  
Meadows  
Lawn Care

As seen on the **BBC**



# The Hambro Arms Milton Abbas

## Sample Menu

### Starters

Homemade soup of the day served with crusty baguette  
Scottish smoked salmon terrine with beetroot crème fraiche and  
dressed mixed leaves

Twice-cooked Blue Vinny and rocket soufflé with a red watercress garnish

### Eggs Benedict

Poached egg with hollandaise sauce served on a toasted muffin with  
crisp prosciutto

Pan-fried king prawns and chorizo with a sun-dried tomato  
and rocket salad

Dorset snails, creamy garlic linguine and crispy Parma ham

### Mains

8oz Hereford Red rump steak with twice-cooked chips, oven-roasted  
flat mushroom and confit plum tomato  
(Add either béarnaise or peppercorn sauce)

Confit duck leg, lentil & smoked bacon stew, roasted baby beets  
and red wine jus

Pan-fried sea bass fillet with saffron turned potatoes,  
crispy kale and a beurre blanc sauce

Pork medallions with a creamy mustard sauce, colcannon potato  
and celeriac puree

Sweet potato and chick pea curry in a rich tomato sauce, with yellow  
basmati rice, garlic & fresh coriander naan bread and mint yoghurt

Chicken ballotine with a sweet tomato & basil sauce, pancetta crisp  
and seasonal vegetables

Doom Bar battered cod with chips, pea puree and homemade tartare sauce

Risotto of the day served with garlic bread

### Desserts

British cheese selection

Blue Vinny, black wax cheddar, Somerset brie and rosary goats cheese  
served with mixed rustic crackers, apple and celery

Treacle tart served with Madagascan vanilla ice-cream and brandy snap  
Bailey's and salted caramel cheese cake on a shortbread base  
served with a berry compote

Hambro crumble with home-made vanilla pod custard

Assiette of Chocolate (to share)

Dark chocolate torte, white chocolate mousse and a chocolate choux bun  
served with Madagascan vanilla ice cream

Banana parfait with toffee sauce

## Hambro Jazz Weekend

June 20<sup>th</sup> and 21st

Following the fabulous weekend that we had last  
year, our second annual Hambro Jazz weekend is  
now confirmed.

The band will be playing on the Saturday evening  
and Sunday lunchtime

Telephone 01258 880233

E-mail : [info@hambroarms.com](mailto:info@hambroarms.com)

[www.hambroarms.com](http://www.hambroarms.com)



## This Month in History: March

### Births

**6th March 1475** – Renaissance genius Michelangelo was born in Caprese, Italy. He was a painter, sculptor, architect, poet, and visionary best known for his fresco on the ceiling of the Sistine Chapel and his sculptures *David* and *The Pieta*.

**14th March 1879** – Albert Einstein was born in Ulm, Germany. His theory of relativity led to new ways of thinking about time, space, matter and energy. He received a Nobel Prize in 1921 and emigrated to the U.S. in 1933 where he was an outspoken critic of Nazi Germany. Believing the Nazis might develop an atomic bomb, he warned President Roosevelt and urged the development of the U.S. Atomic bomb.

**31st March 1878** – Boxing champion Jack Johnson (1878-1946) was born in Galveston, Texas. He was the first African American to win the heavyweight boxing title and was for many a symbol for African-American civil rights. For 13 years he was the most infamous African-American on the planet.

### Deaths

**2nd March 1939** – Howard Carter, British archaeologist/Egyptologist and the discoverer of the tomb of King Tutankhamen, dies at 65.

**5th March 1953** – Joseph Stalin, Premier of the Soviet Union and former ally of Adolf Hitler during WWII, dies at 73.

**27th March 1977** – The worst accident in the history of civil aviation occurred as two Boeing 747 jets collided on the ground in the Canary Islands, resulting in 570 deaths.

**31st March 1855** – Charlotte Bronte, the reclusive Yorkshire novelist and author of *Jane Eyre*, died at the age of 38 with her unborn child. The exact cause remains unknown but there was evidence for tuberculosis and typhus.

### Events

**4th March 1824** – Royal National Lifeboat Institution founded.

**6th March 1869** – Dmitri Mendeleev presents the first periodic table

**10th March 1801** – First Census taken in England.

**12th March 1994** – The Church of England ordained 32 women as its first female priests. In protest, 700 male clergy members and thousands of church members left the church and joined the Roman Catholic Church which does not allow women priests.

**14th March 1885** – First production of Gilbert and Sullivan's "Mikado" at the Savoy.

**22nd March 1963** – The Beatles' first album, "Please Please Me", is released in England.

**25th March 1807** – The British Parliament abolished the slave trade following a long campaign against it led by the Quakers.

**29th March 1871** – Albert Hall opened.

**29th March 1912** – Last entry in Captain Scott's diary. *Mark Ferguson*

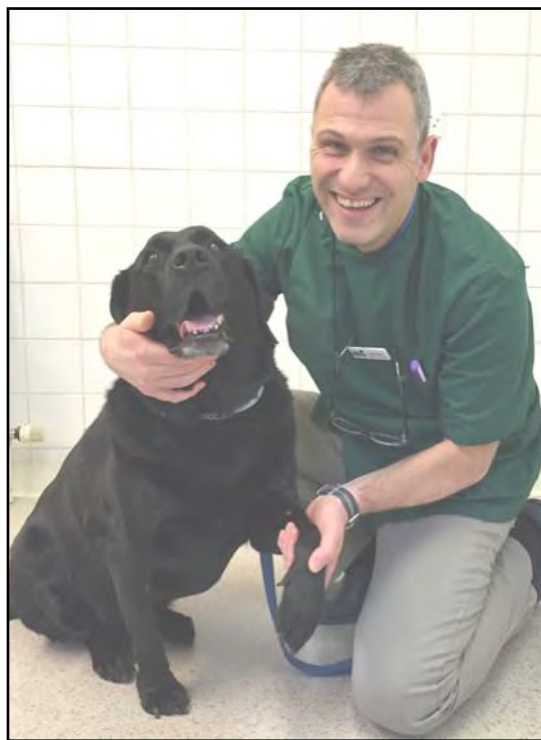
## Vet Cesar's talk at the village hall

VETERINARY surgeon Cesar Sastre will be giving a free talk at the village hall on pet arthritis in March. The presentation, entitled *How I treat arthritis in dogs and cats*, follows a successful talk on the subject last November at The Crown Hotel in Blandford that attracted over 100 people.

Cesar, partner at Damory Veterinary Clinic in Blandford, says that because of that interest he decided to take it "on tour" for pet owners in villages, including Milborne on 11th March.

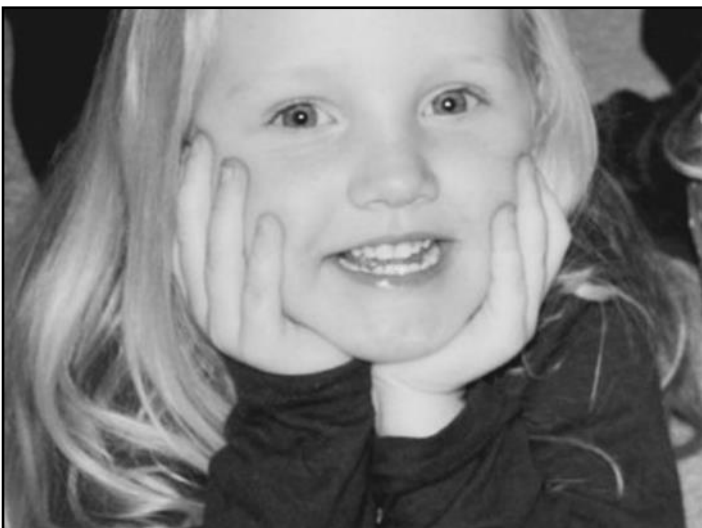
Arthritis is an unfortunately common and painful disease that cats and dogs can suffer from the age of two years, though it is more prevalent in older pets. However, the problems that lead to the disease often occur in younger life but will not be apparent since the joints are relatively resilient. Although there is not a cure, there are ways to avoid and alleviate the problems pets encounter with the disease, and Cesar will illuminate these in his talk, informing owners how to best avoid the disease. Arthritis is on the rise too, due partly to an increase in pet obesity, that puts unnecessary strain on the animal's joints.

The presentation covers everything from prevention of the disease to different forms of treatment, including surgery, and ongoing joint maintenance.



**Cesar will be presenting the talk on Wednesday 11th March at the village hall, starting at 7.30pm.**

You can also catch the presentation at the following locations: Sturminster Marshall village hall (25th February) and Pimperne village hall (25th March). *Ed Richards*



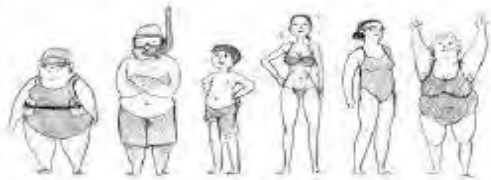
## 32 mile walk? That'll be a doddle!

MILBORNE man, Martin Curtis, aims to walk the portion of the South West Coast Path known as the 'Dorset Duddle' later this month in aid of a very poorly, seven year old girl from Wool. Tragically, Lexi Hopkin has an inoperable brain tumour, and her family and friends hope to raise money so that she can enjoy the time she has left and build as many good memories for her family. Martin is aiming to raise £500 by completing the sponsored walk.

The Dorset Duddle is a 32 mile walk along the Purbeck coast, which starts at Weymouth clock tower and ends at the clock tower in Swanage. The walk is a staple of the Long Distance Walkers Association and involves a total of 3,000m of ascent and descent. Martin hopes to complete the walk in nine hours – should be a doddle.

If you'd like to donate or know more about Lexi, please visit the following page:<http://www.youcaring.com/other/-walk-for-lexi-/301524> *Ed Richards*

# Abbey Swimming Club



## JUMP IN AND JOIN OUR CLUB

Great value swimming right on your doorstep – less than £2 per week. Swimming for the whole family!

**SWIMMING LESSONS FOR ALL**  
Juniors, adults, beginners and stroke improvers.

**Bookings now for beginners (4+) and improvers.**

Contact Maria 880895 or Richard 837402

[abbeyswimmingclub@gmail.com](mailto:abbeyswimmingclub@gmail.com)



Find us on Facebook  
Abbey Swimming Club

Tel: 881443 / 880601 / 881524

## Do you need help in your garden

*Regular gardening maintenance including*  
Pruning, weeding and mowing  
One off projects such as planting  
Hedge cutting and general tidying

**Call Rob 01258837342 – 07435128520**  
Or Email [Rob55garden@gmail.com](mailto:Rob55garden@gmail.com)



**Do you need transport for surgery and other medical appointments? If so, we can help.**

Milton Abbas Neighbourcar is an established voluntary transport scheme covering the area served by Milton Abbas surgery. We can take you to medical appointments and certain social events.

**WE ALSO NEED MORE DRIVERS – you can commit whatever time suits your circumstances.**

**Ring 01258 881709 to register or to obtain more information.**

**Local villages covered:**  
**Milborne, Cheselbourne and Dewlish**

Blandford · Dorchester · Shaftesbury · Sherborne · Weymouth · Wimborne



**Dorsetlettings**  
.co.uk

Dorset's leading letting agent

## Firmly rooted in rural Dorset

Established in Milton Abbas in 1984 and proud to have been letting property in the surrounding area for over 28 years

at the heart of the community

01258 452444



4 West Street, Blandford, DT11 7AJ  
[blandford@dorsetlettings.co.uk](mailto:blandford@dorsetlettings.co.uk)

## Can you identify where this is in Milborne?

Be the first to send your answer to [msa.reporter@yahoo.co.uk](mailto:msa.reporter@yahoo.co.uk) or give to any member of the Reporter team

Reporter team members can be found on page two.

No prize, just a bit of fun.

Answer in the April Reporter.



# Why not become a Local Parish Councillor?

## Have a voice – Stand for elections NOW

Many people wish to become involved in local governance but do not know how to begin.

Local Elections will be taking place on Thursday 7th May 2015. If you are interested in becoming a Parish Councillor you can find out all you need to know at various events being held in the district.

Events are being held at:

NDDC Offices Blandford Forum 18th February 2015 between 4.00 and 7.00pm

Sturminster Newton Town Council Offices 3rd March 2015 between 7.00 and 8.00pm

Alternatively please feel free to contact the Chairman, Cllr Jenny Balcon (01258 837121), or Clerk, Colin Hampton (01258 837011) to find out what being a Parish Councillor is all about.

## What is a Parish Council?

*A Parish Council is the collective voice of its community.*

The Parish Council represents the concerns and aspirations of our local community. It does not receive any Government funding or income from business rates but is primarily funded at present from a small percentage of the Council Tax charge made by District authorities to local householders.

## What does a Councillor do?

A Parish Councillor signs a Declaration of Acceptance of Office and thereby undertakes to observe an ethical Code of Conduct when dealing with matters on behalf of the community. A Councillor also completes a register of interests.

One of the most important tasks of a Parish Councillor is listening to and understanding the views of people in their community. Many public bodies or organisations acknowledge this is the hardest information for them to capture and they in turn use the skills and local knowledge of the Parish Council for advice to assist and inform their services.

Milborne St. Andrew Parish Council holds a meeting once a month in the Village Hall, which Councillors are expected to attend. Councillors act as ambassadors for their community keeping everyone aware of local needs and concerns and reporting back on District, County and regional changes.

## Extra skills and training

No individual councillor is responsible for any single decision. This is democracy at its best. Training is available for Councillors from the Dorset Association of Parish and Town Councils.

## Applying to become a Councillor

Parish Councillors are elected by the public and serve a four year term in office.

If you wish to stand as a councillor you must satisfy these requirements:

- You need to be over 18 years of age.
- A British citizen, a qualifying Commonwealth citizen, or a citizen of any other member state of the European Union.
- On the Electoral Register for the council area for which you wish to stand.
- A local government elector of the parish; or a person who during the whole of the twelve months before nomination as a candidate occupied land or other premises as owner or tenant in the parish; or has, during the same period, resided in that area or within three miles thereof; or has during the same period, had a principal or only place of work in that area.

## You cannot stand for election if you:

- Are bankrupt and an Order or Interim Restriction Order has been imposed.
- Have, within five years before the day of the election, been convicted in the United Kingdom of any offence and have had a sentence of imprisonment (whether suspended or not) for a period of over three months without the option of a fine.
- Work for the council where you are intending to stand for election (but you can work for other local authorities, including the principal authorities that represent the same area).
- Have been convicted or reported guilty of a corrupt or illegal practice by an election court, or have been disqualified from standing for election to a local authority.

## Procedure for applying:

Nomination forms can be obtained from the Parish Clerk or North Dorset District Council Offices in Blandford Forum, online at [www.dorsetforyou.com/elections](http://www.dorsetforyou.com/elections) or [www.electoralcommission.org.uk](http://www.electoralcommission.org.uk).

**Notice of Election – Monday 16th March 2015** – This will be displayed locally and on the Internet by this date.

**Close of Nominations – 4.00pm on Thursday 9th April 2015.** Elections' Offices will let you know who is standing in your area and if the election is contested.

**Close of Withdrawals – 4.00pm on Thursday 9th April 2015** The deadline for withdrawing a nomination.

**Publication of Statement of Persons Nominated – 4pm on Friday 10th April 2015.** However in some areas this may be available online earlier. This will be displayed on the Internet only.

**Notice of Poll – Tuesday 28th April 2015** – This is usually displayed on the Internet before this date.

**Deadline for the April Reporter is 14th March**

**ajc plumbing & gas**

Boiler changes   Bathrooms   Gas safety certificate  
Central Heating   Unvented cylinder  
Boiler Service   24 Hour call out   ...and more

Professional and reliable service in all plumbing and gas needs, please contact Andy Cozens on

**Tel: 07917 878505**  
**Email: cozens858@btinternet.com**

Hearing Aids, Loop Systems

**rita's ears**

Invisible hearing aids that let you catch every word. Free home tests - aids to suit every budget. Servicing & Repairs

Nearly new and ex-demonstration instruments available from our extensive stocks

Tel: 01258 860975 or 07967 567349  
[speechclarity@hotmail.com](mailto:speechclarity@hotmail.com)  
[www.ritasears.blogspot.co.uk](http://www.ritasears.blogspot.co.uk)

# GRASSBY FUNERAL SERVICE

*David Grassby ~ Peter Grassby ~ Andrew Fooks*

*Still a family run business,  
serving the local community since 1861*

Office and Chapel of Rest

8 PRINCES ST,

DORCHESTER

Tel. 01305 262338 (24 Hours)

email: [info@grassby-funeral.co.uk](mailto:info@grassby-funeral.co.uk)



**MEMORIAL MASONRY**

*Memorial showroom at  
16 Princes St, Dorchester*

**Golden Charter**  
Funeral Plans 

[www.grassby-funeral.co.uk](http://www.grassby-funeral.co.uk)

**G**raham  
**K**ing  
**E**lectrician

**07900 900 380**  
**01258 470189**

**[www.GKEdorset.co.uk](http://www.GKEdorset.co.uk)**  
**[Graham@GKEdorset.co.uk](mailto:Graham@GKEdorset.co.uk)**

- ◆ Outdoor power/lighting
  - ◆ Landlord/Homeowner Inspection Report
  - ◆ Electrical installation Condition Report
  - ◆ Additional sockets
  - ◆ Consumer Unit
  - ◆ Fuse box upgrades
- No Job too small**  
**Free Quote**  
**Fully insured**

Proud members of  
**Checkatrade.com**  
Where reputation matters

**City & Guilds**  
Qualified

**FSB**  
MEMBER

**NICEIC**  
DOMESTIC  
INSTALLER 

**NICEIC**  
APPROVED  
CONTRACTOR

# 70 years on, and still going strong! – at the February WI

FOR this auspicious occasion, the 70th birthday of Milborne WI, we were joined for our celebratory meeting by one of our earliest members, Grace Davis, a long-time resident of the village, as well as guests representing neighbouring WIs.

Jenny thanked Ann Mepham for making our new pennant which shows a St. Andrew's Cross and a Dorset button and will be displayed at Council offices with others from across the County. Josie is collecting books etc for our stall at Milton Abbas Street Fair on 25th July. Nominations for a new committee are requested.

Shirley reported that 'Bookends' has had a full month, meeting at Josie's to view a recording of a previously read book, the *Secret Life of Bees*, everyone moved to tears by the end! Our latest book, by Jhumpa Lahiri, which gave us a fascinating insight into the lives of immigrant Bengalis, proved to be a popular and enjoyable read and comes well recommended. We move on to Deborah Moggach's *In the Dark* set in the First World War.

Shirley has invited everyone to a 'girls' tea party' on Saturday 7th March – another chance to wear our party frocks and let our hair down perhaps!

Expressing her delight to be joining us at our birthday party, our guest speaker, Valerie Stevens, had opted to walk on the safe side, sporting a hat, necklace and amulet bag from her latest Siberian visit, which she claimed warded off evil spirits.

Valerie is European President of Associated Country Women of the World (ACWW), responsible for women's groups in countries as diverse as Siberia and Spain. With a consultative status at the United Nations, ACWW gives women a voice at international level through its links with UN agencies. It funds small-scale development projects requested by quite often impoverished local women to suit their needs. Listing its main objectives as an international voice, a helping hand, and an arm of friendship, Valerie felt privileged to be part of it. It needs voluntary contributions to fund women's attendance at

conferences which they would not otherwise be able to attend.

Valerie, who clearly cares passionately about the women she meets and the need for their voices to be heard, was off to Tbilisi in Georgia the following day and Romania in April. Incredibly energetic, she retired from a teaching career in her 50s, studied for further degrees in her 60s, joined the WI in her 70s and discovered ACWW in her 80s. Like the Milborne WI itself, Valerie is still going strong! She hopes to continue offering the arm of friendship to all of these 'wonderful, bright, intelligent women'. For our part, we were completely enthralled.

Valerie and Grace 'cut the anniversary cake' – which we then enjoyed with bubbly and much chatter.

At our meeting on **Thursday 12th March**, Anita Law will talk about '*Watercolour Painting*'. We look forward to seeing you there.

*Pat Bull*

## LOOKING BACK... how it all started

AT a Formation Meeting on **Thursday 18th January 1945**, after Mrs Troyte-Bullock had explained the working history and organisation of the WI, a motion "that a Women's Institute be formed in Milborne St. Andrew" was passed unanimously. Thirty names were enrolled and 30 subscriptions were immediately paid. Interestingly, it was also agreed that girls of 14 and over should be admitted to membership. Regular meetings would be held on the second Thursday of every month – as remains to this day.

At the first monthly meeting proper, on **February 8th 1945**, business included the election of Mrs Grace Kellaway as President, and Mrs Howse and Miss Frampton as Vice-presidents. The newly-formed committee then appointed Mrs Biles and Miss Haylock as joint Secretaries and Mrs W Davis as Treasurer. Members were divided into four groups to discuss the forthcoming programme of events. "Everyone entered into this with enthusiasm and the resulting lengthy lists of suggestions were both helpful and hopeful," minutes record.

Over the coming months Milborne WI got into full swing, with donations to Dorchester County Hospital of monies, nine dozen eggs and several bags of potatoes; a highly successful "Gay Nineties" event attended by 70 dancers who processed to music supplied by radiogram (!); links being established with WIs at Dewlish, Milton Abbas

and Briantspuddle; a fancy dress parade which featured individual members dressed variously as a bathing girl, Farmer Giles and a "Ghost of War"; supporting "Salute the Soldier Week"; and the usual fascinating monthly guest spot, such as the cooking of meat pie and hot scones which were avidly consumed; and social half-hours, one of which, hilariously, was dressmaking with newspapers and "putting the baby to bed".

*GB*





CARPENTRY & JOINERY SERVICES LTD

*We are a well established and respected company, offering carpentry and joinery services to commercial and domestic customers since 1995.*

**CARPENTRY • JOINERY  
WINDOWS & DOORS  
KITCHENS • BESPOKE WORKS**

*Your project is as important to us as it is to you!*

Telephone: 01305 849377  
Steve Brown: 07789 821408  
Neil Barrett: 07789 907398  
[www.brownanbarrett.co.uk](http://www.brownanbarrett.co.uk)

## A Good Read by Shirley Dunkley 'The Miniaturist' by Jessie Burton



TO all lovers of historical fiction I say, 'Seek this book out and immerse yourself in it now!' Set in late seventeenth century Amsterdam, it tells the story of Nella, and 18 year old from the country, newly married to a rich merchant, Johannes Brandt, and entering his strange household. There she meets his powerful sister, Marin, and the two servants, Cornelia, an orphan, and Otto, an African freed from slavery by Johannes, and a great source of curiosity in the city. The new husband buys Nella a great dolls' house, an exact replica of the one they live in, and she contacts a miniaturist who supplies her with the tiny treasures, perfect copies in every way, for her new toy. These even include a set of dolls representing in detail everyone who lives in the house, and Johannes' greyhounds, carefully covered in moleskin. Nella becomes obsessed by the miniaturist who seems to know so much and the mystery surrounding the gifts which appear without her ordering. Meanwhile she is trying to understand the rich household into which she has come. The book is steeped in the sights, smells and tastes of Amsterdam at the height of its fortune and power. It is impossible not to recall the interiors of Vermeer and de Hooch but the novel creates so much more than just the visual impressions – what the characters eat is described mouthwateringly and the mixed smells of the canal city. The story is told of intrigues and secrets beneath the rich detail of merchant life, but ultimately it reveals the unexpected strength of the three women, Nella, Marin and Cornelia, forced by circumstances to take charge of their own destiny.

The narrative is a powerful one, full of mysteries, and ends before all have been revealed, but the power of the book is in its creation of another world which surrounds the reader so thoroughly that at the end one is reluctant to leave its richness and colour and return to more prosaic and pastel times.



Family Law Advice for a fixed fee of £100\*

### What Family Law advice will I receive?

One hour's advice with a family law solicitor.  
Summary letter of the advice and recommendations going forward.

Arrange a meeting today

01258 459361  
[www.blanchardsbailey.co.uk](http://www.blanchardsbailey.co.uk)

\*exc. VAT. Terms & conditions apply

## Did you identify this?

February's picture was taken of the gate to Cottage Green in Milton Road

Congratulations to Robin Keller who was the first person to send in the correct answer.

Try your luck this month on page 26.



## Have you something to share?

Send your stories and pictures to [msa.reporter@yahoo.co.uk](mailto:msa.reporter@yahoo.co.uk)



# designer Gardens

Professional Garden Designer - designing and creating beautiful gardens and landscapes



**Maureen Lock**  
16 Huntley Down  
Milborne St Andrew

www.designergardens.biz

t: 01258 837929 m: 0778 660 8776 e: maureen@designergardens.biz

- Creative and practical designs to suit all styles of garden
- Project management from design to completion
- Construction by experienced quality landscapers
- Planting schemes and border designs



## In your Garden

Seasonal notes and tips from Maureen Lock of *designerGardens*



## Berry Good Fruit

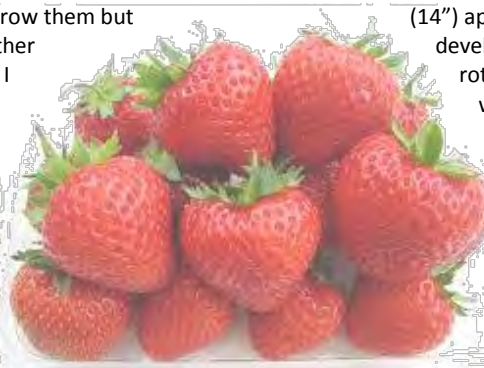
I LOVE strawberries and I've always wanted to grow them but haven't had enough space – what with all the other vegetables I grow. But all that has changed now I have an allotment – I now have the space.

There are several types of strawberry plants: early croppers such as 'Honeoye', mid-season such as 'Cambridge Favourite' and 'Elsanta', late season such as 'Florence' and perpetual fruiting which fruit all summer long.

So, true to type, I did a bit of research and discovered that strawberries do not thrive on alkaline soils, and you can see bits of chalk in the soil round here when you dig it over. Oh yes, you can grow them and you will get some fruit, but some of the nutrients will not be available to the roots, in particular iron and manganese. All is not lost though as you can add these elements to the soil by applying flowers of sulphur (FOS) or yellow sulphur at a rate of 70g/m<sup>2</sup> (that's roughly 2 handfuls). Fork it into the soil and it will be just right to plant your strawberries.

The best time to plant your strawberries is when the ground is workable in the spring; March or April are the best times. If you get your plants during the winter months, pot them up and keep in a frost free place and don't be tempted to plant them in cold, wet soil as they may well rot or be killed by frost.

Strawberries need sun and good drainage, that's why you often see them in raised beds. You need to incorporate lots of compost or well-rotted manure and give them space to spread out. Plant about 35cm



(14") apart and 75cm (30") between rows. As the fruits develop, put some straw underneath to prevent them rotting on the soil. AND most importantly – cover with netting so that the birds don't eat them before you do.

The plants should give you a good crop for about three years before you need to replace them. If you've been organised you would have grown on the runners produced by the established plants each year and these can now take the place of the spent strawberry plants. Always dispose of the old plants.

Strawberries picked on a warm day are the most tasty and should be eaten as soon as possible as they do not keep well. It is always such a disappointment when you buy strawberries in a supermarket, they look good but more often than not, are completely tasteless or hard. The answer is simple – grow your own.

And just a final note – March is the latest time in the year when you can plant bare root trees and shrubs so you will need to order them very quickly. Bare root trees and shrubs (and fruit bushes) are much less expensive to buy than container grown plants.



### KMc Electrical Services

All types of electrical work undertaken for domestic, industrial and commercial properties

- Extra points to full rewiring
- Test & Inspection of building wiring
- Three phase
- Emergency callouts

No job too small

Professional, Quality service



Tel: 01258 881439 Mob: 07712 646131

Email: info@kmcelectrical.co.uk



### MINTERN

BUILDING & LANDSCAPING LTD

For all your Garden and Home Improvements

– over 20 years local experience –

Extensions, patios, landscaping, stonework, brickwork, fencing and plastering

All aspects of Garden and Home Improvements

For a free, no obligation, quotation please call:

07977 070703 or 01963 363535

Carl.mintern@gmail.com

A traditional village pub where families are made welcome  
in **Milborne St. Andrew**



**Carvery**  
Available Friday  
12 noon—2.30pm £7.50  
Friday from 6.00pm  
and all day Sunday £8.95

Separate Sports Bar  
Sky Sports and ESPN  
Pool and Darts  
Function Room and Skittle Alley



BAR SNACKS  
LUNCHES



**What's on in March**  
*Thursday 12th Celtic Night  
all you can eat for £8.95*  
*Sunday 15th March  
Mothering Sunday – all  
mothers on pre-booked  
tables receive a gift.*  
*Thursday 26th Pie Night  
all you can eat £8.95*

**takeaway  
menu  
available**



**Dog  
friendly**

tel: 01258 837 248

DORCHESTER HILL MILBORNE ST. ANDREW  
DORSET DT11 0JG