

80P WHERE SOLD


# Reporter

News and Views from around the area

Volume 8 Issue 2

February 2016

[www.milbornestandrew.org.uk/reporter](http://www.milbornestandrew.org.uk/reporter)

 [facebook.com/MilborneReporter](https://facebook.com/MilborneReporter)

Milborne St. Andrew



## Notes from the Editor

Good news and sad news. First the good news. I am pleased to announce that James Young answered our appeal and has come forward to deliver the Reporter around Hopsfield starting with this issue. Ed Frost also volunteered and he has agreed to be on call to deliver when one of our regular distributors cannot make it. Thank you James and Ed.

The sad news comes from Helen Pugh on page 5 who says that two small cottages were taken from one of the Christmas tree displays in church between Christmas and the New Year. If you are guilty then may I suggest you return them.

Christmas tree festival at the church, pictures can be found on page 9.

The front cover this month is of some Long-tailed tits.

Read about Milborne given the green light on fracking on page 13.

See how Milborne went blue on page 14.

The mystery on St Andrew's View is explained by Louise on page 27.

The Reporter team is still in need of someone to gather news from around the village and to write articles and stories. If you would like to help in any way then please contact any of the Reporter team. We prefer your copy to be submitted in MS Word with any pictures sent as separate .jpg files. It is really helpful if you do not use any formatting, underlining or UPPER CASE or include any tables.

Further information from me on 837700.

David Payne Editor

## Disclaimer

THE views expressed in the Reporter are not necessarily those of the editorial team. Also, please be aware that articles and photographs printed in the Reporter will be posted on our website and so are available for anyone to access.

## VILLAGE LUNCH

To be held at the Village Hall on  
**Saturday 27th February from 12.15 to 2.00pm**

Wine or fruit juice

Beef Stew and dumplings

Apple pie and custard/Coffee or tea/mints

Vegetarian option available

£6.50 per head

**Everyone welcome young and old alike**

Tickets and more information available from  
Josie Wright on 839090 or Chris Nowell 837543

## Advertise with the Milborne St Andrew Reporter

Distributed to approximately 500 homes 11 times each year

Full page £200.00 p.a. / £40.00 per issue

Half page £140.00 p.a. / £25.00 per issue

Quarter page £75.00 p.a. / £13.00 per issue

Eighth page £50.00 p.a. / £7.00 per issue

Back page £300.00 per annum

Community events at the village hall, half page or less free of charge, other community events at half the above rates for half page or less, all subject to availability.

Advertising copy MUST be received by the 14th of the month

[msa.reporter@yahoo.co.uk](mailto:msa.reporter@yahoo.co.uk)

Advertisers will also be listed in the Business Directory at

[www.milbornestandrew.org.uk](http://www.milbornestandrew.org.uk)

## Hi Ho, Hi Ho, it's off to the panto we go

SPECTRUM residents living in Blandford St. Mary were invited to join the Bus2Go outing to see Snow White and the Seven Dwarfs at Weymouth Pavilion on the Saturday before Christmas.

A fleet of five Dorset Community Transport buses headed for Weymouth with more than 70 residents on board, including 16 children. Many family groups enjoyed the day out, including Linda James who shared the experience with her granddaughter Amy and her four-year-old great granddaughter Matilda.

There was time for a bite to eat, some last minute Christmas shopping and, for some, a walk along the beach before heading for the matinee performance.



Pantomime Dame, Lee Redwood, with just a few of our passengers.

The pantomime was enjoyed by everyone and afterwards they got to meet one of the stars of the show, pantomime Dame, Lee Redwood.

The trip was organised by Bus2Go's Margo Kirk and Spectrum's Resident Involvement Officer, Liz Maxwell. Bus2Go organises regular trips throughout the year and serves Blandford and the DT11 villages. The buses are equipped for those with mobility difficulties and the project is a real life-line for those living in rural areas. For further information about the service please phone 07917 298 321 or go to [www.bus2godorset.org](http://www.bus2godorset.org).

## Have you something to share?

Send your stories and pictures to  
[msa.reporter@yahoo.co.uk](mailto:msa.reporter@yahoo.co.uk)

## Your Reporter Team

Janet Allen, Linda Constant, Pete Constant,  
Carole Fornachon, Heather V. Hogg, David Payne, Ed Richards,  
Susan Wilson and Josie Wright

Advertising: Ed Richards 01258 837907

Advertising renewals: Linda Constant 01258 839246 (daytime)

Distribution: Janet Allen 01258 837551

General enquiries, news and features: David Payne 01258 837700

Treasurer and photography: Heather V. Hogg 01258 837392

Copy for the next issue MUST be received by the 14th February

Enquiries and copy to: [msa.reporter@yahoo.co.uk](mailto:msa.reporter@yahoo.co.uk)

E-copy as .doc or .pub files, pictures as .jpg files please

Paper copy to David Payne at 7 Bladen View

## New Year get-together at the Wednesday Club

THE Wednesday Club enjoyed a New Year get-together on Wednesday 6th January in the Village Hall. Jenny Balcon had put together three quizzes beginning with a "silly" one which got us off to a good start with lots of laughter! There were sandwiches, scones, cakes and biscuits washed down with tea and coffee – no alcohol to



be seen in a "dry" January! Sadly our chairman Ann Guy was unwell so unable to join in the fun.

Our next meeting is on Wednesday 3rd February at 2.00pm in the village hall when we are holding a Beetle Drive so do come and join us.

On March 2nd we will be visiting Blandford Fashion Museum. If you are interested in coming please call Ann Guy on 01258 837959.

*Lis Watts*

## Food and Wine festivities

THE Food and Wine Club's AGM and Christmas Dinner was, once again, held at Athelhampton. The rain held off just enough for us to scurry from the coach to partake of mulled wine in the house itself and to walk back up to the Great Hall for our meeting and food. Formalities were brief and to the point so that we could get down to the main event!



The food was as delicious as ever and was devoured eagerly by the 47 of us who attended. We had our culinary knowledge challenged by a very clever and cunning quiz set by Helen Pugh, which we chewed through during the meal! The cryptic clues defeated many of us, but the winning table was enthusiastically applauded by the lesser astute of us! Funny how when you know the answers they are so obvious!

The committee has too many recommended venues on the list for next year and will be putting their heads together early in the New Year . . . once the Christmas indulgences have faded . . . to select the best for a 'tasty' and interesting 2016 programme for our members.

Our main aim is to enjoy good food in good company and we would encourage new members to join us in 2016. Please get in touch with our chairman Julie Johannsen (jjohannsen51@hotmail.com 01258 839004) for more information or to become a member.

# **P.N. GRAY**

## **ELECTRICAL LIMITED**

**AGRICULTURAL - DOMESTIC – INDUSTRIAL INSTALLATIONS**

**ESTABLISHED OVER 50 YEARS**

ALL ELECTRICAL WORK UNDERTAKEN FROM  
INSTALLATIONS TO MINOR WORKS  
INSPECTION AND TESTING  
REWIRING AND MAINTENANCE

FULLY ENROLLED WITH THE BRITISH STANDARDS  
INSTITUTE FOR SELF CERTIFICATION AND  
BUILDING REGULATION PART "P"

GIVE US A CALL FOR A FREE  
NO OBLIGATION  
QUOTATION OR JUST SOME FRIENDLY ADVICE

**Contact us: 01258 837354**

**Mobile: 07774 838851**

**Paddock View, Dewlish DT2 7LR**

**E-mail:**

**pngrayelectrical@btinternet.com**



### **Dorset Underground map competition**

Thanks to everyone who took part in our Dorset Underground map competition and all the answers we've had on our Facebook page. The competition runs until the end of January, so the lucky winners will be announced on our Facebook page soon after, and also in March's issue.

## **Yoga**

**Yoga classes in the village hall**

1.30 - 2.45pm on Thursday afternoons

Please bring a mat and wear comfortable clothes.

Individual classes tailored for you also available.

For information ring

**Sarah Ryan on 01258 839230**

or email saryan6630@aol.com

*Yoga teacher, trainer, therapist*

The Garage, Dorchester Hill, Milborne St. Andrew, DT11 0JG

# MSA CARS

**As many of you will have noticed, MSA Cars left the Garage in Milborne St. Andrew at the end of December and CLOSED due to the dreadful economic climate during 2015 after four years trading in the village.**

**Thanks to all our past customers, & Wishing you all Good Luck in 2016.**



## Dorset Carpet Care

cleaning with care

Dorset Carpet Care is a local, family run business specialising in the cleaning and restoration of carpets, rugs soft furnishings and stone or tiled floors, in homes and businesses throughout Dorset.

We use various technologies including the latest truck-mounted hot water extraction system that can clean deeper and more effectively than other methods.

We belong to the NCCA and IICRC, which means we are fully qualified, honestly priced and our services come guaranteed.



- ✓ hot water extraction deep cleans
- ✓ removal of stains and smells
- ✓ stain protector application
- ✓ treatments for allergies and pests

Call Andrew or Joanne  
on 01258 837092

[www.dorsetcarpetcare.co.uk](http://www.dorsetcarpetcare.co.uk)



## COUNTY TREE SERVICES

All aspects of Tree Surgery undertaken by  
NPTC Surgeons

**Commercial and Domestic  
Fully Certified and Insured  
Hardwood Logs**

- Re-Shaping
- Reductions
- Pruning
- Dismantling
- Section Felling
- Hedge Cutting
- Stump Removal
- Equipment Hire
- Land and Site-Clearance
- 24 Hour Emergency Call Out
- Free Estimates

[www.countytreeservices.com](http://www.countytreeservices.com)  
E-mail: [info@countytreeservices.com](mailto:info@countytreeservices.com)

**Quality Seasoned**

Loads at £80 and £175

Free Delivery throughout the area

Kindling and Wood Chippings Available

Hardwood and Softwood Planking

**Tel/Fax: 01258 837377**

Mobile: 07971 276980



## Village cottages disappear!

THE Christmas Tree Festival in St. Andrew's Church over the festive period was a chance for all different groups to decorate a tree depicting something they are looking forward to. When all the trees were lit at the carol service, the church twinkled for the congregation to enjoy and afterwards the displays remained for visitors to enjoy until the New Year.

The church flower arrangers chose to look forward to a white Christmas, producing a snowy country scene, including an icy landscape with warmly lit cottages in the hamlet. A beautiful display that we hope people enjoyed.

Well we didn't get the White Christmas, but what we did get is a mystery to solve. The two small battery powered cottages, no more than four inches high, that brought our winter scene to life, disappeared from the display sometime between Christmas and the New Year weekend. They were lent to the display by one of the flower arrangers, so they are not only missing from the church, but also from a resident of the village.



It angers me to think that there may have been a theft from the church at what should have been a peaceful time, with goodwill to all men. I would like to think instead that they are temporarily misplaced rather than stolen.

If you know where these personal belongings have gone to, please encourage them to be returned to the church so that they can be returned to the owner. They may not be the most valuable items to go missing in recent years from the village, but WE WOULD LIKE THEM BACK!!

*Helen Pugh*

## Invitation to Pancakes

MILBORNE, Dewlish, Tolpuddle and Puddletown churches are holding a Benefice Pancake Party at Tolpuddle Village Hall between 6.00 and 8.00pm on **Saturday 6th February**. All you need to bring is a filling to share for the pancakes. See you there! More information from John or Pam on 01258 839090 / 837203

*John Wright*



## GERRY'S PLANTS

**Shrubs – Perennials – Rockery  
Herbs – Vegetable – Soft-fruit  
Basket – Bedding plants**

**12 The Rings  
Milborne St. Andrew  
Blandford, Dorset DT11 0HY  
Tel: 01258 837386**

## Two Milborne Bus services under threat

SOME Dorset rural bus services are under review as Dorset County Council (DCC) seek to reduce subsidies by £500,000.

Two services that currently stop at Milborne St Andrew are under review. These are...

1. The 340 that runs between Wyke and Higher Whatcombe on Wednesdays
2. The X12 that currently runs between Weymouth and Woodyates daily excluding Sundays.

The idea would be to stop the 340 completely whilst the X12 would only run between Dorchester and Blandford.

DCC would like the gaps in service to be filled by community volunteer services.

A four week consultation started earlier in January and runs until 8th February. If you would like to have your say then you can complete the survey at <https://www.dorsetforyou.com/travel-dorset/2016-bus-review> or pick up a paper copy from any Dorset library, town or parish council offices.

*Pete Constant*

## Dorset Trading Standards – Pension Scams

LAST April, the Government introduced new pension rules enabling greater access to and freedom around, how people spend their pensions. However, there is growing concern that the new rules will increase the risk of investment and other types of fraud. Indeed, it has already been reported that one in seven over 55's have been targeted by pension fraudsters, and it's been estimated that the amount of money lost to pension scammers between April and August 2015 was just over £9 million, which is around twice as much as the same period in 2014. The most common way used by potential scammers to contact over-55s is by email, followed by phone and then by post.

### Be very wary if you get:

- A cold call offer of a free pension review
- A cold call offer of a one off investment opportunity (for example, in land development, fine wines, precious stones, etc)
- An offer of an investment described as 'unique', 'overseas', 'environmentally friendly', 'ethical' or in a 'new' industry;
- An offer of exploiting a legal loop hole
- A proposal to put all your funds into one investment
- A convincing marketing offer that promises returns of over 8%
- An offer involving transferring your money quickly, and sending documents to you by courier

Do not rush into apparently attractive financial offers and make sure you seek advice and guidance before agreeing to anything. Dorset Trading Standards Buy With Confidence scheme has a list of approved financial advisors. Impartial guidance is available through the Government's Pension Wise guidance service. Visit [www.pensionwise.gov.uk](http://www.pensionwise.gov.uk) or phone The Pensions Advisory Service on 0300 1231047. Finally, beware of copycat websites – some websites can look like they're official government services like Pension Wise when they're not.



If you think you've been the victim of a pension scam or would like details of a Buy With Confidence approved financial advisor, call Citizens Advice Consumer helpline on 03454 040506 and report it to Action Fraud on 0300 1232040.



## CHURCH SERVICES February 2016

### 7th February – Next before Lent

9.30am	Parish Communion	Tolpuddle
9.30am	Celebrate . . .	Milborne
11.00am	Parish Communion + Baptisms	Puddletown
11.00am	1662 Morning Prayer	Dewlish

### 10th February – Ash Wednesday

7.30pm	United Benefice Holy Communion	Puddletown Church Room
--------	--------------------------------	------------------------

### 14th February – Lent 1

8.15am	1662 Said Communion	Puddletown Church Room
9.30am	Methodist United Service	Tolpuddle
9.30am	Parish Communion	Milborne
11.00am	Puddletown Praise	Puddletown Church Room
11.00am	Parish Communion	Dewlish
6.00pm	United Benefice Lent Talk	Tolpuddle

### THURSDAY 18th February

12 noon	Lunch-time Communion	Puddletown Church Room
---------	----------------------	---------------------------

### 21st February – Lent 2

9.30am	Family Communion	Tolpuddle
9.30am	1662 Morning Prayer	Milborne
11.00am	Parish Communion	Puddletown Church Room
11.00am	Family Service	Dewlish
6.00pm	United Benefice Lent Talk	Puddletown Church Room

### 28th February – Lent 3

9.30am	Parish Communion	Milborne
11.00am	1662 Morning Prayer	Puddletown
11.00am	Family Communion	Dewlish
6.00pm	United Benefice Lent Talk	Milborne

### LENT

During Lent there will also be:

**Compline** in Milborne at 6.00pm on Thursdays.

**Evening Prayer** in Dewlish at 6.30pm on Thursdays  
(from 18th February).

### MORNING PRAYERS (Monday – Thursday 8.15am Saturday 8.45am)

Monday – Puddletown	Tuesday – Milborne
Wednesday – Dewlish	Thursday – Tolpuddle
Saturday – Puddletown	

## Lent 2016 – A positive approach to dying

Lent starts early this year with Ash Wednesday on 10th February.

Over the past few years, as well as our usual services in the benefice, we have additionally held a benefice gathering on Sunday evenings during Lent, which has provided an opportunity for people across the four churches to join together for worship, prayer and reflection.

One thing we can be sure of is that everyone will face death at some point. It is an inescapable fact of human life. Most people put off thinking about it until they are suddenly faced with a change in circumstances – perhaps a diagnosis of a terminal illness, the death of someone they love or a realisation as they grow older that the days of their life are numbered.

In spite of the fact that we will all die, most people are remarkably unprepared for this. They find talking about dying difficult, painful and uncomfortable. As a result, many people end up being unable to express their wishes about their own death, for instance, where they would like to be when they die, how they would like their body to be treated after death or ideas for their funeral and how they would like to be remembered.

Research has shown that those who are able to express their views about death and dying in a supportive atmosphere are much more likely to have a “good death” than those for whom it is a taboo subject. Talking about death can be painful, but like many fears it has also been shown that they become easier to cope with once they are faced.

Not talking about death can lead to many unintended consequences. Friends and relatives may not know what is required or desired. They may make decisions that go against what the person they love wanted in regards to end-of-life care because of ignorance. Those nearing death can feel isolated and distressed because they and others struggle to talk about what is happening to them. I still hear of people crossing the road when they meet someone who has been recently bereaved because they don't know what to say.

In years past, death was much more part of everyday life, but in our modern society most people now die away from home, although the majority who express a preference would rather be there than anywhere else. People, of course, still face death and bereavement, but it has become a much more private affair, with many unsure how to find the support they need.

Even for Christians, who see death not as the end of life but as the beginning of something new, these subjects are hard to talk about.

For this reason, our Lent gatherings this year are going to focus on a range of subjects related to dying and death. The aim is not that this is something negative and depressing, but a hopeful and positive step as we encourage and support one another to open up and share our hopes, fears and stories.

As the magazine goes to press early, some of the dates have yet to be confirmed. Four of the evenings will be led by visitors, who will talk on different related topics. We will be hearing from a hospital chaplain on living with a terminal illness (28th February), a palliative-care nurse about her work, a funeral director on the practical steps that need to be taken when someone dies, and a hospice chaplain on the spiritual resources available (20th March). Each will speak for 30-40 minutes, after which refreshments will be served, followed by an opportunity to ask questions. The fifth evening will be a wider discussion based on the Church of England's Grave Talk initiative – an opportunity to ask questions as well as to reflect on these matters in a safe space.

These evenings are open to all, regardless of whether you attend church or not. There will be a (very) short act of worship at the end of each evening. Please look out for more details nearer the start of Lent – by the time you read this, there will be leaflets in each church with more details.

Dates are as follows: 14th February: Tolpuddle Church; 21st February: Puddletown Church Room; 28th February: Milborne church; 13th March: Dewlish; 20th March: Puddletown Church Room. All start at 6.00p.m. and will finish at around 7.30/7.45 p.m.

I look forward to seeing you there.

With best wishes,

*Sarah Hillman*

### Church Contacts

Vicar Sarah Hillman 01305 848784

E-mail: sarah.c.hillman@tesco.net

### Churchwardens

#### Milborne St. Andrew

John Wright 839090 Pam Shults 837203

#### Dewlish

Jim Burg 837466 Sue Britton 837218

### Benefice Office

Marion Bishop

puddletownbenefice@outlook.com

or by telephone on 07812 687266

## News from St Andrew's church

### Christmas started with Christingles

THE 31 children who came to the service on Sunday afternoon, and the grownups that they brought with them, enjoyed crafting and making their own Christingles. A Christingle is a symbolic object, used in the Advent services of many Christian denominations. Christingle means 'Christ Light'. The central orange represents the world, the red ribbon round its centre represents the love and blood of Jesus, and the dried fruits and sweets are symbols of God's creations (for many people, they also represent the four seasons). The lit candle symbolises Jesus, the light of the world, who brings hope to people living in darkness.



The Children's Society, which promotes the use of Christingles, benefited by just over £100 from the collection after the service. During the service a short video of Ben Hartman's animated Christmas Poem was played, according to which our Advent and Christmas

services gave us the opportunity to thank God for sending his Son to change things from 'sad' to 'glad'. Each family was given a copy of the Bible Society's book to take home with them.

### Milborne School sings in church

Milborne First School held their Carol Service on the last day of term. The church was packed full of children and their parents. Talented pupils wrote passages which they read out, a few played carols on their recorders, and the school choir, led by Mrs Macnair, sang harmoniously. There were very few dry eyes among the adults!

### Good Attendance at Christmas Services

The Carol Service attracted adults and children alike. Six lessons were read by the congregation and the seventh by Sarah Hillman; these were interspersed with familiar carols. A small choir sang two carols accompanied by Sam our organist. At the end of the service the lights were turned off whilst the beautifully decorated Christmas trees had their lights turned on and everyone sang 'Oh Christmas Tree' (see page 9). Mulled wine and mince pies were served to all who wanted to stay on.

St. Andrew's was lucky to have a Midnight Mass and a Christmas morning service, both of which were led by Sarah. The Christmas morning service attracted children who were eager to tell us about their new favourite presents; some of course were too shy to come to the front but did get to show theirs during refreshments at the end of the service.

### We can't do it without you!

A big thank you from us to all who have helped over the last year in keeping the church and churchyard clean, well maintained and decorated with beautiful flower arrangements as well as those who help with the delivery of the services.

### Quiz Night at the Pub

The Royal Oak has very kindly offered to put on a Quiz night and raffle on **Sunday 7th February at 7.00pm** in aid of the church building fund. Teams of four should book in advance at the pub so that they know how many to expect. They are asking for donations rather than an entrance fee, and have promised that the questions will not be too obscure! Everyone will be welcome so book your table now for a really fun evening. *John Wright and Pam Shults*

**Deadline for the March issue is 14th February**

## Dewlish Church Notes

### The holly and the Tardis . . .

WHAT an eventful December we had in Dewlish! The church began with the Christmas Bazaar, from which the final total raised was £395.95.

We then sang carols around the village in aid of Shelter, the charity for the homeless, and received £198 in donations. We were lucky to have it dry (at least from the sky!), and it was very mild. A big thank-you to Dianne and John at The Oak for supplying us with very welcome mulled wine and mince pies at the end of the evening.

The Carol Service was an absolute delight. Our little ones were superb in their depiction of the Nativity, and our young people read and acted beautifully. I have to say we loved the Tardis effect, Ed. You and Adam did a great job with the sound and lights. Thank you all very much. We also loved our very professional musicians, who always perform so well.

Not least, but most importantly, we should thank Jim who wrote the script and organised it all. We had a wonderful congregation and collected £235 which has been donated to the Children's Society.

Our church looked wonderful for Christmas Day. All the windows were filled with holly and candles, our Christmas tree looked beautiful thanks to Coral, and our Crib scenes (two of them!) get bigger and better each year, so thank you for those as well.

*Daphne Burg*

### Do you need a lift to church?

If you have difficulty getting to church or need transport when the Benefice Service is at another church, we can arrange transport for you. Please contact Pam on 837203 or John on 839090.



# Let us transform the quality of your lawn!

**From as little as £15!**



Our specially tailored treatment programme will ensure your lawn is in excellent condition all year round

**Weed Free ■ Lush Green ■ Moss Controlled**

**Greensleeves**  
Lawn Treatment Experts

**FREE Lawn Analysis & No Obligation Quote**

**Call us NOW on: 01258 839255**

**FREephone 0808 100 1413 • www.greensleeves-uk.com**

# Southfield Veterinary Centre

*Providing First Class Care for all your Pets*

Surgery Dermatology Behaviour Problems Acupuncture  
Homeopathy Pet Passports Physiotherapy



01305 262913

24hr emergency cover

[www.southfieldvet.co.uk](http://www.southfieldvet.co.uk)



## Tree & Hedge Services Covering Dorset

Tree felling, reduction and pruning.

Hedges trimmed or removed. Lawn mowing service.

Professional service, fully qualified and insured.

Free no obligation quotes. No job too small.

Telephone: 07760 157087

Email: [info@nrptreeandhedgeservices.co.uk](mailto:info@nrptreeandhedgeservices.co.uk)

# WOODS FUNERAL SERVICES

Providing a caring service since 1878

## Independent Funeral Directors

Memorial Specialist

24 Hour Personal Service

Prepaid Funeral Plans

Pauline J Guy Dip FD MBIFD

Allan Quartermaine Dip FD LMBIFD



Visit us at: 11A Icen Way, Dorchester, Dorset, DT1 1EW

Call us on: 01305 250425 Fax: 01305 250625

Email: [enquiries@woodsfuneralservices.co.uk](mailto:enquiries@woodsfuneralservices.co.uk)

Website: [www.woodsfuneralservices.co.uk](http://www.woodsfuneralservices.co.uk)





# Christmas Tree Festival at St. Andrew's



MILBORNE hosted the benefice Christmas Tree Festival this year which was a great success and brought many people to church over the holiday period. The festival was opened at the end of the Carol Service when the church was put into darkness, each tree was lit up and we sang 'O Christmas Tree, O Christmas Tree'. Afterwards we celebrated with mulled wine and mince pies.

The theme was 'We are looking forward to . . .'. Sixteen trees were decorated with inspiring themes such as the Olympics, carol singing, wellie boots, presents, thoughts, bell ringing, snow, looking forward, the Nativity, the Night before Christmas, Traditional Christmas, summer, baptism and White Christmas. We would like to thank everyone who decorated a tree and all the members of the community who supported the event as well as those who offered to serve refreshment each afternoon.

*Eva Stockley*



Treat a member of your f  mily.....




To book an appointment, call

Emma Whittington  
Staddlestones  
Milton Road  
Milborne St Andrew  
Dorset, DT11 0JZ

Tel: 07824 392813  
01258 839171

emmawhittington@btinternet.com

Follow us on 



# A Darby Building Services Ltd



All Types of Building Work Undertaken;  
New Builds, Extensions,  
Structural Alterations, Kitchen,  
Bathrooms

Telephone: 01258 470151  
01305 757162

Mobile: 07974 260938

Email: adbsltd@gmail.com

## The Hambro Arms Milton Abbas

Tel. 01258 880233

### Valentine Menu

Saturday 13<sup>th</sup> February

#### Starters

Six Portland oysters to share served on a bed of ice with lemon. (to share) \*

Smoked pigeon with sweet potato crisp and mustard pickled carrots

Roasted goats cheese served on a rocket, pear and walnut salad. (v)

Creamy tarragon, white wine and mushroom bruschetta. (v)

#### Fillet Course

Passion fruit sorbet

#### Main Course

'Jurassic Coast' fillet steak with homemade chunky chips, roasted tomatoes, béarnaise sauce and red watercress (£3 supplement)

Oven-roasted quail served with a chestnut and vegetable sauce, dauphinoise potato and mixed roasted vegetables

Whole roasted mackerel served with charred asparagus, roasted vine cherry tomatoes and beetroot foam.

Spinach and ricotta gnocchi served with a mixed leaf and tomato salad. (v)

#### Desserts

Chocolate fondant with caramel sauce homemade honey comb and Cornish ice-cream (to share)

Strawberry and lime cheesecake served with chocolate chip crumb and a mixed berry foam

Homemade treacle tart served with toffee apples and Madagascan vanilla ice-cream

#### Local Cheeseboard

Blue Vinny, black wax cheddar and Somerset brie served with mixed rustic crackers and celery

All four courses

£25.00

(\*Oysters by pre-order only)

E-Mail: [info@hambroarms.com](mailto:info@hambroarms.com)

### Gourmet Evening

Saturday March 12<sup>th</sup> 2016

#### To Begin

A glass of Prosecco, Italy

#### Amuse Bouche

Jellied tomato consomme with basil oil and vine cherry tomatoes

#### Starter

Warm ham hock & quails egg terrine served with a pickled carrot & cucumber salad and lightly scented truffle hollandaise

A glass of Torre Cerone Montepulciano d'Abruzzo 2013, Italy\*\*

#### Fish Course

Pan-fried sablefish with a caramelized shallot & spiced red wine sauce, seared asparagus, pomme puree and chanterelle mushrooms.

A glass of Nicon-Villages Blanc Les Pierres Blanches, France\*\*

#### 'Gin and Tonic' sorbet

#### Main Course

#### 'Trio of spring lamb'

Herb and parmesan crusted lamb cutlet pan-fried lamb rump and red wine and rosemary braised shoulder served with minted pea pure and sautéed sweet potato

A glass of Copilla de Barro, Malbec, Argentina\*\*

#### Dessert

#### 'Bakewell Alaska'

Almond sponge caramelized Morello cherries marzipan ice-cream and a light meringue served with toasted almond praline

A glass of Vistamar Late Harvest Moscato, Chile\*\*

#### Coffee or a selection of teas

All six courses with a glass of Prosecco

£39.95

\*\*Optional Wine Flight £17.95

Website: [www.hambroarms.com](http://www.hambroarms.com)

## 2015 Weather in Milborne St. Andrew

There is an old saying from Weather Lore;

“Whether it be dry or whether it be wet,  
The weather will always pay its debt”

The weather in 2015 demonstrated this quite well. From May to September the average temperature for those months was more than a degree below the long term average so we were ‘owed’ some months with above average temperature and that is what we got.

The temperature from October to December was above the long term average with December being 5.34°C above the long term average for that month. I only recorded one air frost in December. The average temperature for the year ended up at 10.86°C which was below the 11.57°C for 2014 (The average temperature for 2014 was the highest for any year that I have recorded). Because of those higher temperatures at the end of the year there were snowdrops and daffodils out in bloom and the grass was still growing at the end of December.

The total rainfall for the year was 958.8mm which was 96% of the long term average. May and August were quite wet months. The middle two weeks of October were rain free but the wettest day of the year occurred on 29th October with 33.8mm of rain. The rainfall in December was 123.7mm which is around the long term average for that month in Milborne. Fortunately we did not suffer from the exceptionally high levels of rain in December which occurred in the north west of the country.

There are considerable variations in the weather from year to year so to measure any changes that might be taking place in the climate it is necessary to take a long term view to iron out those variations. I keep a rolling 30 year average of rainfall and temperature and the results of this are quite interesting.

Average Annual Rainfall for the 30 years from 1971 to 2000  
= 967.9mm

Average Annual Rainfall for the 30 years from 1986 to 2015  
= 1042.0mm

Average Annual Temperature for the 30 years from 1971 to 2000  
= 9.98°C

Average Annual Temperature for the 30 years from 1986 to 2015  
= 10.49°C

The 7.65% increase in annual rainfall and the 5.11% increase in annual temperature over those 15 years may not be particularly significant and it would require data over a much longer period of time to come to any definite conclusions.

Perhaps I will update this in 30 year’s time!!

*Pluvius.*



*The overflow in The Causeway seems to be working.*

## Restoration and Resurgence Milton Abbey and St Catherine’s Chapel

It cannot have passed many visitors notice that in the last few months there has been considerable activity in Milton Abbey. Holes have been dug in the floor; workers have been seen clearing gutters and vegetation from the walls; surveyors have been seen measuring the building with laser measuring devices and much has been spoken of “The Great Stare” Project.

All this activity has culminated in an application for faculty and grant of planning permission for the restoration of Milton Abbey and of some of the great landscape created by Lancelot “Capability” Brown who called his project at Milton, “The Great Stare”. Associated with all this planning has been a fund raising effort in applications to Heritage Lottery Fund and Viridor Credits as well as the start of raising match funding from supporters of the project. There will of course be more of that to do. However, work has started to repair the roofs, clear the drains and then to repair the floors and vaulting.

What has not been so apparent has been the quiet background resurgence of the spiritual life of the Abbey. The church is used by the school as its chapel and regular sessions are held there for the students and staff both on weekdays and Sundays in term time. But this is not all. A regular cycle of prayer has been re-established with Morning Prayer daily in the Abbey at 8.45am and a session of quiet prayer and meditation in St. Catherine’s Chapel every Wednesday from 10.00 to 11.00am. It is through this growing resurgence in the spiritual life of the two buildings that we seek to underpin the fund raising and physical restoration of Milton Abbey and its surroundings. These sessions of prayer and meditation are open to all and we hope that more and more people will come and join in so that this resurgence of the spiritual life will grow and grow, revitalising the Abbey and all associated with it.

This is but a start and we hope to establish a community of prayer to support the Abbey in its mission of education and hospitality. It is early days and there is much to be done as we seek to restore and reinvigorate this wonderful place in the depths of rural Dorset.

### Ladybirds Jumble Sale . . . and cakes too!

Head to the Sports Pavilion this Sunday (31st January) for lots of quality items at the Milborne Ladybirds jumble sale. There will be plenty to choose from, including books, bags, clothes, shoes, toys and much more. Refreshments will be on sale; tea, coffee and, of course, delicious homemade cakes. All proceeds will go to the good cause of the Ladybirds playgroup. The sale opens at 11.00am and runs until 2.00pm – so hope to see you there!

*Dione Andrews*

## Dorchester Foodbank

YOU may well ask why there is an article on Dorchester’s Foodbank in the Reporter?

The reasons are quite simple, it is to give a special thanks to the people of Milborne who have so generously given to this cause.

Food has been donated throughout 2015 via the village church and in addition Christmas gifts have been donated by both the Gardening Club and by Gray’s Stores. This has enabled us to not only give food parcels but to bring a little Christmas cheer to those in need.

During 2015 we have been able to help some 177 single individuals, 78 couples and 102 families giving out over 800 bags of food

So, well done everyone and thank you.

*Chris Nowell* for Dorchester’s Foodbank



For all your fencing and timber building  
– Over 20 year’s local experience –

Fencing – Decking – Summer Houses – Sheds –  
Gates – Pergolas – Trellis and Archways –

In association with Mintern Building and Landscaping

For a free, no obligation, quotation please call:

07904 000863

or 01963 363535

Email: Carl.Mintern@gmail.com

## Greenways Tree Care



and  
Garden Services



(fully insured)

Felling  
Reductions  
Pruning  
Stump Grinding  
Hedges  
Lawn Maintenance  
Turving  
Strimming  
Garden Fencing  
Chippings delivered

**Tim Moore**

01258 837124

07968 154708

20 years experience  
Free estimates and advice  
Dewlish, Dorchester

# Heathcote House

GUEST  
ACCOMMODATION  
Tel: 01258 837219

Heathcote House is a lovely Grade II listed guest house right in the heart of Milborne St Andrew. We offer a warm welcome and friendly service, all rooms have king size beds, en-suite bathrooms and are tastefully refurbished to a very high standard.

- Aga cooked breakfast served in the conservatory under an old grape vine.
- Guests drawing room with big comfy sofas and log fires in the winter.
- A secluded garden with delightful seating areas.
- The perfect place from which to explore Dorset’s unspoilt countryside and famous Jurassic coast a few miles away.



Heathcote House, Milborne St Andrew, Dorset DT11 0JG. Website: [www.heathcotehouse.co.uk](http://www.heathcotehouse.co.uk)

## Beauty and Massage Therapy

For all of your beauty and massage therapy requirements  
contact Jo at

# Spoilt Rotten

Treatments for both ladies and gentlemen include Swedish Massage, Waxing, Manicures, Pedicures, Makeup, Facials, Airbrush Tanning and many more procedures.

Fully insured and qualified treatments

**Telephone 01258 837014**

Stag House, The Square,  
Milborne St Andrew, DT11 0JF

## Can you identify where this is in Milborne?

Be the first to send your answer to [msa.reporter@yahoo.co.uk](mailto:msa.reporter@yahoo.co.uk)  
or give to any member of the Reporter team.

Reporter team members can be found on page two.

No prize, just a bit of fun. Answer in the March Reporter.



## Dorset's best village competition 2016 launched for 30th year

*Choice of more categories to enter this year including Environment, "best village shop", people's project and neighbourliness*

The search has begun for Dorset's Best Village with the launch of the 2016 competition this week. The competition has been organised by Dorset Community Action (DCA) for the past 29 years. Entry details are being sent to the county's villages inviting them to enter either through the parish council, village hall committee or other active community group.

Magna Housing has been the major sponsor for the competition since 2010 and has renewed its support again this year. Additional sponsorship comes from Dorset County Council, The Dorset Echo, Dorset Magazine, Blackmore Vale Magazine, along with local food producers Clipper Tea, Fudges Biscuits, Honeybuns, Craig's Dairies and Helen Furness Catering.

DCA's Competition Organiser Rita Burden says: "Last year we had 72 entries into the different categories of 'Best Village', so our aim again for this special 30th year is to encourage communities which have never taken part in this rewarding competition, to enter for the first time. Any organisation can enter its village – the village hall committee, school, youth club, scout or guide group, or any other active community group, besides the parish council. Even Dorset's smallest hamlets can enter."

David Aldwinckle, Magna Housing Association director, said, "We are particularly proud to be sponsoring the Best Village Awards again in this special 30th anniversary year. We've seen the awards go from strength to strength and they really help to promote community spirit in Dorset villages, making them great places to live in."

Besides the main "Best Village" competition, there are four other entry sections: --

- "The People's Project" – the village judged to have entered the best project involving local active people;
- "Environmental Champions" – the village judged to be doing the best 'Green' initiative.
- "Best Village Shop" – the sponsors, Dorset branch of the Campaign to Protect Rural England (CPRE) is supporting this category for a third year. Communities are asked to nominate the village shop which serves them best.
- Last year Magna introduced a new category – "Neighbourliness" which is all about what the community is doing to look after its most vulnerable and needy people. Any Dorset village can enter.

*"We want villages to demonstrate that they work together, taking a pride in their local surroundings and amenities, while promoting great community spirit"* Rita Burden added.

The deadline for entries in the Best Village category only is 5.00pm on Monday 11th April 2016. For all other categories the deadline is 5.00pm on Monday 25th July 2016.

DCA is encouraging groups to save paper and postage by entering the competition online if possible.

Entry details can be downloaded from [www.dorsetcommunityaction.org.uk](http://www.dorsetcommunityaction.org.uk) or by telephoning DCA on 01305 250921 to be sent a copy by email or on paper.

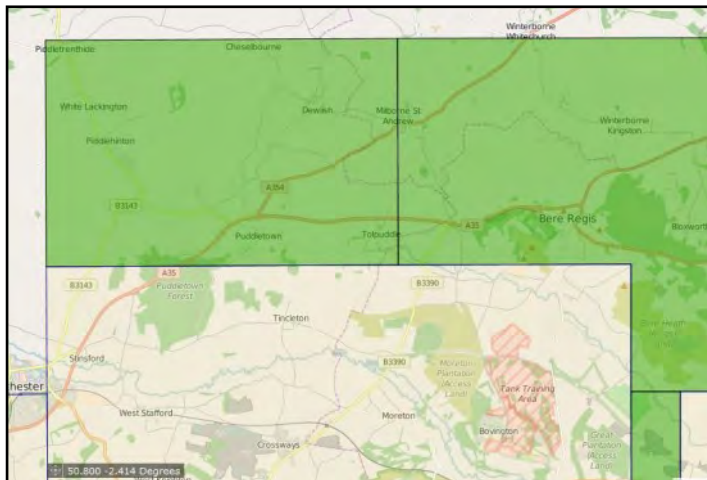
### Advertise in the *Reporter* and get results

This publication relies on advertisers to pay for all production costs. If you reply to one of our advertisements, please mention that you saw it in the Milborne St. Andrew *Reporter*

## Milborne's on the 'frack map'

MILBORNE and a large surrounding area have recently been given the go-ahead for licensing for 'fracking'. A week before Christmas, Milborne received the less than festive gift of being involved in the Oil and Gas Authority's (OGA) latest round of licensing awards which could ultimately lead to 'hydraulic fracturing' (fracking) for shale oil or gas in the county.

This latest announcement – the '14th Onshore Oil and Gas Licensing Round' – details the location of 159 blocks of land up for grabs around the country. A large swathe of mid-Dorset is included, from Piddletrenthide on the western edge to Wimborne and Bournemouth in the east, with Poole and Wareham Forest also being on the map. A large chunk of the Purbecks is also listed, with Corfe to Swanage and Worth Matravers being subject to a licence. Shale gas exploration in much of these areas would have been illegal, since fracking in Areas of Outstanding Natural Beauty, National Parks and Sites of Special Scientific Interest was outlawed until the Government performed a U-turn on the issue recently and allowed these types of land to be considered for licensing.



Map section showing licence blocks (shaded area)

The OGA's chief executive, Andy Samuels, said that the latest round of licensing "attracted strong interest". He went on, "This round enables a significant amount of the UK's shale prospects to be taken forward". Mr Samuels said that the latest awards would enable the licencees to plan their strategies further but any exploration is subject to planning, environmental and safety authorisations. A Bridgend-based energy company, South Western Energy Limited, has been awarded the licence for the block that Milborne lies in, as well as four other neighbouring blocks.

The issues of safety and ecological damage will be foremost in most local people's minds. Campaign groups have sprung to Dorset's defence against what they see as a dangerous activity, suggesting that water supplies could be contaminated and instability caused deep underground. Green MEP for the South West, Molly Scott Cato, warns the Government's support in the region could be lost if the "hugely unpopular fracking goes ahead in our beautiful region". She urged the Government to "rethink its support for fracking and invest in safe, clean, renewable energy instead".

However, Energy Minister, Andrea Leadsom, said that this latest nationwide licence award will help secure the country's energy production and the role that shale gas will play in "the UK's transition to a low-carbon future. The licences move us a step closer – driving forwards this industry which will provide secure, home grown energy – for decades to come". She went on to quote from the "Task Force for Shale Gas" report published recently that "with the right standards in place, fracking can take place safely".

More on this on our Facebook page.

*Ed Richards*

**The deadline for the March Reporter is 14th February. Get your copy and pictures in early to avoid disappointment.**

## Zoe Schwarz shows 'Milborne's got the Blues'

WELL, if anyone who came to the first Blues Night at the village hall did indeed have the blues on arrival, then they certainly would have soon found them dispelled by the amazing atmosphere of a sold-out, standing room only event. Zoe Schwarz and the fine musicians of Blue



Commotion opened the evening by showcasing their own original material which features the song-writing talents of Zoe and husband Rob Koral. Zoe has a truly exceptional voice, full of depth, vibrancy and power, and within minutes of the opening bars, we all felt the thrill of being entertained by exceptionally talented artists.

Following the short break, Rob and Zoe treated us to three numbers as an acoustic duo, an intimate interlude of classic jazz-blues standards which were ecstatically received. Back to the full band for the final hour and it was dance time – a quick shuffle of tables to create more dancing space did the trick, and we rocked until the 11.00pm curfew! Clive's fervent pleas for "just one more" gave us a couple of encores before a really happy crowd spilled out into the chill of the night, thoroughly

warmed through by a brilliant evening.

Huge thanks to the amazing Village Hall team, Sandie and Roy, Gren, Amy, for help planning and running the gig, also of course Sue and Angela for the sterling bar service. I write this the morning after the night before and we have had so many emails and phone calls praising the night that it looks as though the first "Milborne's got the Blues" event will not be the last. Milton Abbas Riding for the Disabled Group and the Village Hall fund for the play park will both receive generous funds from the proceeds.

Barbara Rawlings



## GRASSBY FUNERAL SERVICE

*David Grassby ~ Peter Grassby ~ Andrew Fooks*

*Still a family run business,  
serving the local community since 1861*

**Office and Chapel of Rest  
8 PRINCES ST,  
DORCHESTER**

**Tel. 01305 262338 (24 Hours)  
email: [info@grassby-funeral.co.uk](mailto:info@grassby-funeral.co.uk)**

**Golden Charter**  
Funeral Plans 



**MEMORIAL MASONRY**  
*Memorial showroom at  
16 Princes St, Dorchester*

[www.grassby-funeral.co.uk](http://www.grassby-funeral.co.uk)

## A Little Chaos (12)

To be shown by 'Milborne Movies'  
at Milborne St. Andrew Village Hall (DT11 0JX)  
on Friday 19th February 2016 at 7.30pm

THIS story takes place in the 17th century at the Palace of Versailles, where King Louis XIV (Alan Rickman) is looking to develop the now-famous gardens. Given the importance of the job, his chief designer, André Le Nôtre (Matthias Schoenaerts), recruits strong-willed widow Sabine De Barra (Kate Winslet) to assist him. While building this garden at Versailles, these two talented landscape artists become romantically entangled. While pushing herself and her workers to complete the Rockwork Grove as an outdoor ballroom, Sabine negotiates the perilous rivalries and intricate etiquette of the court. As she gradually comes to terms with a tragedy in her past, Sabine's professional and personal interactions with André bring out honesty, compassion, and creativity in both of them.

A Little Chaos explores the tension between nature and artifice, passion and restraint, and, as the title suggests, order and chaos. Contrasts abound: between the humanity the wigless Louis displays in bed with his children and the distant king in full regalia; the empty formality of Le Nôtre's marriage and the organic intimacy of his relationship with de Barra; the sparkling facades of the court ladies and the personal tragedies they conceal. Kate Winslet's portrayal of Sabine is brilliant, with Alan Rickman playing the quietly subdued monarch. The scene between the king and Madame de Barra, when she mistakes him for the royal gardener, is the pivot point on which the film turns and it is beautifully done. The production was filmed in England at nine locations, including Hampton Court. The costumes, scenery and sets are quite stunning. A Little Chaos shines with its unique perspectives on beauty, flowers, grief, work, and impermanence.

The village hall and bar is open from 7.00pm and the film starts at 7.30pm. Tickets £3.50 can be obtained on the door.

View the Reporter each month in colour at  
[www.milbornestandrew.org.uk/Reporter/index](http://www.milbornestandrew.org.uk/Reporter/index)

### 100 CLUB WINNERS

Draw Date - Wednesday 6th January 2016

1st £100	Jon Riddle
2nd £50.00	John Sanderson
3rd £10	Shirley Dunkley

The next draw is on Tuesday 9th February 2016  
at 8.00pm in The Royal Oak

*Everyone is welcome to attend.*

**New members always welcome.** Contact  
June Maitland 837235 or  
Denise Sanderson 837049

Payments may be made by a cheque payable to  
MSA FC and Church 100 Club

*Please speak to Denise Sanderson, Jenny Balcon  
or June Maitland for information.*

## Milborne Village History Group

### Daisy Cooper tells her story

THIS subject of this month's meeting was enthralling and very informative. June Jenkins read out the transcript of an interview her daughter had several years ago with Daisy Cooper, an old resident of Milborne who lived in Chapel Street. It was fascinating to hear how things have changed over just a few decades and how villagers lived in the early part of the last century.

Dorset History Centre provides advice and training for those who are interested in recording oral histories. If this is something that one of the group, or any individual, is interested in they can find out more by contacting the centre on email at [archives@dorsetcc.gov.uk](mailto:archives@dorsetcc.gov.uk) or by phone 01305 250550.

The next meeting which was advertised on the 10th February has been changed to the **17th February** and the subject will be 'growing up on a farm', June Maitland's experiences.

There will be a meeting in March; Linda was to do a presentation but this has now been deferred to April. We will know what the subject is to be by the February meeting.

As this group continues to grow we plan to keep meeting on the second Wednesday of the month, calling on local people to share their knowledge of history or their own research with the group. The meeting dates for April to July are as follows:

13th April; 11th May; 8th June; 13th July

Unless notified in advance the meetings will continue to be held in The Royal Oak starting at 7.30pm  
*Pam Shults*

**HER MAJESTY THE QUEEN WILL BE 90 ON THE 21ST  
APRIL. ARE YOU CELEBRATING IN ANY WAY? A STREET  
PARTY? ADVERTISE YOUR EVENT IN THE REPORTER.**



### FEBRUARY SCHEDULE 2016

Lunch extra on all outings  
Margo 01258 837749 / 07917298321 [www.buszgodorset.org](http://www.buszgodorset.org)

**SATURDAY February 13th**  
**DUNELME, THE RANGE**  
Fish n Chips, Lakeside  
Poole  
Return Bus Fare: £10.00  
\*\*\*\*\*

**SATURDAY February 20th**  
**Dorchester Trumpet Major 2 for 1**  
Tea and live music at Sandringham Court  
Plus craft sale  
Return Bus Fare: 10.00  
\*\*\*\*\*

**Wednesday 24th**  
**Mystery Lunch £7.50 return**



# Community Contacts

Please let the *Reporter* know if any of these details change

More information about many community organisations can be found on [www.milbornestandrew.org.uk](http://www.milbornestandrew.org.uk)

## COUNCILS

North Dorset District Councillor	Emma Parker	01258 881631
	Jane Somper	01258 471089
Parish Council – Dewlish	Clerk: Sandra Sims	01258 837132
	Chair: Andrew Booth	01258 837284
Parish Council – Milborne St. Andrew	Clerk: Colin Hampton	01258 837011
	Chair: Jenny Balcon	01258 837121
<b>Floods</b> A354 problems contact the Highways Agency		0300 1235000
Dorset Direct		01305 221000
<a href="mailto:dorsetdirect@dorsetcc.gov.uk">dorsetdirect@dorsetcc.gov.uk</a> <a href="http://www.dorsetforyou.com/reportroadproblems">www.dorsetforyou.com/reportroadproblems</a>		
Environment Agency Floodline		0845 9881188
South West Highways <a href="mailto:hello@swhitd.co.uk">hello@swhitd.co.uk</a>		01404 821500
Wessex Water Sewerage Floodline		0345 8505959

## GENERAL – ADULT

Ladies Group – Dewlish	Judith Bridgen	01258 837157
Moonlight Swing Band	Gillian Pink	01305 260731
M.A. Neighbourcar	Nigel Hodder	01258 881709
Wednesday Social Club	Margaret Evans	01258 450518
Women's Institute	Josie Wright	01258 839090

## GENERAL – YOUTH

Ladybirds (Playgroup)	Liz Dyer	01258 839117
Scout Group	Mike Mullett	01258 837114
Secretary:	Brian Burton	01258 839033
Under 5's Group – The Busy Bees	Leanne Brown	07899 808185
	Lianne Hall	07846 256694
Youth Club age 8 – 14 years	Lianne Summers	01258 839081

## POLICE

Police – Non-emergency contact		101
Community Beat Officer	PC Dave Mullins	101
Safer Neighbourhood Team	PC Dave Mullins and PCSO Luke Goddard	101
Home watch Co-ordinator	Joy Robinson	01258 837661

## SCHOOL

Milborne First School		
Headteacher:	Sharon Hunt	01258 837362
Chair Governors:	Miss Jane Pope	
Friends of School Chair:	Becky Hunter	

## SPECIAL INTEREST

Cribbage	Peter Anthony	01258 837089
Bellringers	Pip Howell	01258 837329
Bridge Group	Laurie Benn	01258 837720
Food and Wine Society	Julie Johannsen	01258 839004
MSA Allotment Society Chair:	Joy Robinson	01258 837661
Secretary:	John Maddell	01258 837954
MSA Gardening Club	Richard Lock	01258 837929
Milborne Players	Roy Sach	01258 837033
Ranters' Folk Session	Roger Harrall	01258 837371
Round Robin Ramblers	Ian Bromilow	01258 880044

## SPORT

Abbey Swimming Club	Pat Cowan	01258 880601
Archers – Crossways	Sheila Ryall	01258 837504
Athletics – Junior	David Pearson	01258 837057
Badminton	David Payne	01258 837700
Circuit training	Grace Martin	01305 213885
Cricket – Dewlish	Elaine Kellaway	01258 837696
Cricket Club – Milton Abbas	Colin Chastey	01258 882162
Football – Adult	Jamie Haylock	07894 685893

Football – Treasurer	John Sanderson	01258 837049
Football – Minis	Nicola Malone	07788 217579
Pilates (school)	Claire Barratt	07540626174
Running Group	Anne-Marie Pearson	01258 837057
Skittles – Dewlish	Frank Ross	01258 837366
Sports Club Chairman	John Sanderson	01258 837049
Bookings:	John Sanderson	01258 837049
Table Tennis	Pauline Pitfield	01258 839123
Tap Dancing for Adults	Libby Goodchild	01305 268029
Tennis	Dennis Nelson	01258 837734
Tennis (Members Secretary)	John Sanderson	01258 837049
Yoga (at school)	Sue Chapman	01305 848053
Yoga (at village hall)	Sarah Ryan	01258 839230

## VILLAGE HALL

Dewlish		
Chairman/Secretary:	Alex Carter	01258 837312
Milborne St. Andrew		
Chairman:	Paul Tasker	07801 714619
Booking Secretary:	Sandie Sach	01258 837033

## HEALTH

Bere Regis Surgery		01929 471268
Milborne St. Andrew Surgery		01258 837383
Milton Abbas Surgery		01258 880210
Puddletown Surgery		01305 848333
NHS for emergencies		111
Patient Voice Secretary	Nigel Hodder	01258 881709



## Milborne Movies

Friday 19th February  
at 7.30pm

Doors and Bar at 7.00pm

Supported by 



WOMAN POSTIVELY BLOOMING THE DAILY MAIL BRADA

ACADEMY AWARD WINNER  
KATE WINSLET MATTHIAS SCHOENAERTS ALAN RICKMAN AND STANLEY TUCCI

# A LITTLE CHAOS

A FILM BY ALAN RICKMAN



Tickets £3.50

Milborne St. Andrew Village Hall



# Community Events Diary

Add your event to this diary by contacting the **Reporter** – tel: 01258 837700 or email: msa.reporter@yahoo.co.uk

## January

**Sunday 31st**

**Ladybirds Jumble Sale . . . and cakes too!** Sports Pavilion from 11.00pm – see page 11.

## February

**Wednesday 3rd**

**Wednesday Club** holding a Beetle Drive Village Hall 2.00pm – see page 3.

**Thursday 4th**

**Milborne Players** presents *Sinbad in Space* Village Hall 7.30pm. Saturday matinee 2.30pm Tickets

**Friday 5th**

£7.00 from 01258 839056 – see below.

**Saturday 6th**

**Sunday 7th**

**Quiz** The Royal Oak – see page 7 and back page advert.

**Tuesday 9th**

**100 Club** draw The Royal Oak 8.00pm – see page 15 for latest winners.

**Thursday 11th**

**WI** Chris Shaw talks about 'Amazon to Galapagos' Village Hall – see page 27.

**Sunday 14th**

**Reporter** latest date for the March issue. Copy and pictures to msa.reporter@yahoo.co.uk or any member of the Reporter team.

**Wednesday 17th**

**Village History Group** *Growing up on a farm*, June Maitland's experiences. The Royal Oak 7.30pm all welcome – see page 15.

**Parish Council Meeting** Village Hall Committee Room 7.30pm.

**Thursday 18th**

**Gardening Club** Growing in Community Spaces – *Andrew Hunt* Village Hall 7.30pm.

**Friday 19th**

**A Little Chaos** (PG-12) shown by 'Milborne Movies' Village Hall 7.30pm – see pages 15 and 16.

**Saturday 27th**

**Village Lunch** Village Hall. 12.15pm – see page 2 for menu.

## Regular Bookings at the Village Hall

**Ladybirds Playgroup** Monday–Friday 8.30am–1.00pm MH (term time only)

**Beavers** Monday 5.00–6.30pm MH (term time only)

**Scouts** Monday 6.00–8.00pm CR/MH

**Players** Monday 8.00–10.00pm MH

**ABC Line Dancers** Tuesday 7.30–10.00pm MH

**Cub Scouts** Tuesday 5.45–7.15pm MH (term time only)

**Wednesday Club** first Wednesday 2.00–4.00pm MH

**Yoga** Thursday 1.30–2.45pm MH

**Gardening Club** third Thursday 7.30–10.00pm MH

**Karate** Thursday 5.10–6.40pm MH

**Village Hall Committee** third Thursday every two months 7.30–10.00pm

**Women's Institute** second Thursday 7.30–10.00pm

**Youth Club 8–14 years** every other Friday MH (term time only)

**Village Lunch** last Saturday of the month 12.15–2.30pm MH

**Artsreach Events** – look out for the posters.

Check Village Hall Notice Board for any other events that are one off for you to join in with.

## Regular Bookings at the First School

**Pilates** Monday 7.00–8.00pm (term time only)

**Yoga** Tuesday 6.30–8.00pm (term time only)

**Badminton** Wednesday 7.00–8.30pm (term time only)

**Circuit training** Thursday 6.30–7.30pm (term time only)

## February at the Sports Club

**Every Saturday football** Milborne or Corfe Mullen 2.30pm.

**Table Tennis** Monday 7.00–9.00pm. Information from Pauline Pitfield 01258 839123

**The Busy Bees** Under 5 Group from 9.30am to 11.30am on Thursday term time only. Contact Wendy Britton on 07867 720283.

### Milborne Mini Soccer

Our training sessions will be altering slightly with all training sessions on a Wednesday night, and additional training for under 11's on a Saturday morning. Matches will be played on Sunday morning and afternoons.

Under 11s Stuart Joyce 01258 456594.

Under 8s Nicky 01258 837919.

Under 7s Nicky 01258 837919.

*Please let the Reporter know if there are any alterations to this list or you would like something added.*



The MILBORNE PLAYERS present

# SINBAD IN SPACE

written & directed by RON KARLEY

February 4th, 5th, & 6th . . .  
7.30pm (2.30 Sat Mat.) . . .  
Milborne St. Andrew . . .  
Village Hall . . .

Tickets £7

www.milborneplayers.org.uk ★ Box Office 012 5883 9056

## Milborne 100 Club

1st PRIZE £100    2nd PRIZE £50

3rd PRIZE depends on number of members paid

For only £1 a week you can have three chances for a prize in every draw (minimum £5.00)

*Please make cheques payable to*  
MSA FC and Church 100 Club

For information contact:

John Sanderson    Football Club    837049

June Maitland    Church    837235

Denise Sanderson    Collector    837049

## May Fayre planning begins

IT may be cold and damp outside, but our thoughts have already turned to the summer and the May Fayre, which will be on the 21st this year. We do hope that you will want to join us to enjoy the excellent weather we always have, buy goodies from the stalls, eat a cream tea, play games and put your dog through its paces. You will also help support many of the clubs and organisations that are based around the village as all profits are distributed to those taking part.

We have already invited all those who have taken part in the past, but if you want to be involved by having a stall or helping out in some other way, do let any of the committee know. We are Elizabeth Humphrey (elhumphrey@hotmail.com or 839263), Ed Richards (edr.etc@gmail.com) and Mike Mullett (837114).

## A Happy New Year from Ladybirds

AT the time of writing this we have only been back at Ladybirds a few days from the Christmas break. It has been lovely talking to the children telling how Father Christmas left presents, drank his milk, ate his mince pies and Rudolph ate his carrot. Some things never change! I was told by one young boy that he shook his present and it made a ringing noise. I asked if it was a bell only to be told "no it was a motor bike" and his other presents only made quiet noise.

This month we will be talking about time – a hard concept for young children. Some of the children are interested in clocks and are identifying the time of changes of activities during our sessions. We wondered if anyone has any old alarm clocks or similar that wind up or we can open up to show the mechanics. If you have some that you no longer need please drop them into the Village Hall on a weekday morning.



With all the toys and activities to choose from some of our boys found an Argos catalogue which had been brought in to cut up. They sat on the floor discussing transformers and other boy toys for a considerable time. I wonder how many of you used to do this?

*Liz Dyer*



Milborne Ladybirds Playgroup

Ofsted registered no.217717

Registered Charity no. 1087441

We offer a high quality preschool experience for children aged 2 years to school age for Milborne St Andrew and the surrounding area

All Children are treated as individuals with exciting activities based on their interests.

Now open  
Monday and Tuesday until 14.30

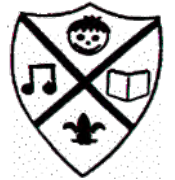
Highly qualified staff aim to challenge children to achieve their potential

Opening times  
Early Birds 8.30-9.00  
Session 9.00-12.00  
Lunch Club 12.00-13.00

To find out more please contact  
Liz Dyer (Leader) 01258 839117 or 07771 512427  
Lucy Bishop (secretary) 07866 267044  
[www.milborneladybirds.org.uk](http://www.milborneladybirds.org.uk)



# Milborne St. Andrew First School



Learning together, playing together;  
all for one, one for all  
**School News**



WE are all back to school and excited to see what 2016 has for us at the First School. Since our last update we have of course had Christmas which saw some wonderful performances from the children of their class productions. Each one was enthralling and the children excelled themselves, there were many proud parents in the room!

The children will be having Outdoor Education lessons every week where they will be building structures. We would like to ask if anyone has any of the following they could donate to us;

- Long ropes (approx. 5m lengths)
- Tarpaulin sheets (approx. 3sqm)
- Pallets/crates
- Bricks/weighted objects
- Scaffold planks
- Buckets
- String/small rope (approx. 50m)

Our after school club continues to be a success, we run a before school club from 7.45-8.45am and also after school 3.00-5.30pm. The children take part in a range of indoor and outdoor activities, matched

to their interests; these include craft, art, sports with Milton Abbey school and the very popular Friday night cooking!



## CONTACTS

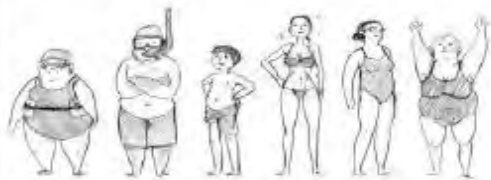
If you require any information about the school, including admission details, or would like to arrange a visit please ring Mrs Pearcey in the school office

**Headteacher:** Mrs Sharon Hunt      **Secretary, School Office:** Mrs Lynn Pearcey

**Chair of Governors:** Miss Jane Pope      **FOS Chairman:** Mrs Becky Hunter

e-mail: [office@milborne.dorset.sch.uk](mailto:office@milborne.dorset.sch.uk)    website: [www.milborne.dorset.sch.uk](http://www.milborne.dorset.sch.uk)    Tel: (01258) 837362    Fax: (01258) 837170

# Abbey Swimming Club



## JUMP IN AND JOIN OUR CLUB

Great value swimming  
right on your doorstep –  
less than £2 per week.  
Swimming for the whole  
family!

**SWIMMING LESSONS FOR ALL**  
Juniors, adults, beginners and  
stroke improvers.

**Bookings now for beginners (4 +)  
and improvers.**

Contact Maria 880895 or Richard 837402

[abbeyswimmingclub@gmail.com](mailto:abbeyswimmingclub@gmail.com)



Find us on Facebook  
Abbey Swimming Club

Tel: 881443 / 880601 / 881524

## PURBECK AERIALS

SKY - SMART TV - WALL MOUNTED TV

FREESAT - EXTRA POINTS

**RICHARD HARVEY**

07976 222887 / 01929 553705

**SAME DAY SERVICE**

**FREE QUOTES - OAP DISCOUNT**

[www.purbeckaerials.com](http://www.purbeckaerials.com)

"I am local"



## LOGS

Quality Seasoned Hardwood Logs

Small Load £80 and Large Load £175

Kindling and Coal Household/Smokeless

20kg Household £10.50

20kg Smokeless £13.00



**Tel/Fax: 01258 837377**

Mobile: 07971 276980

# COLIN J. CLOSE FUNERAL SERVICE

*A family run business, serving the local  
community of Blandford  
and surrounding villages*



[www.close-funeral.co.uk](http://www.close-funeral.co.uk)



Office and Chapel of Rest

Peel Close, BLANDFORD FORUM, DT11 7JU

email: [info@close-funeral.co.uk](mailto:info@close-funeral.co.uk)





**Golden Charter**  
Funeral Plans 

**Tel.**  
**01258 453133**  
**(24 Hours)**



# designer Gardens

Professional Garden Designer - designing and creating beautiful gardens and landscapes

-  Creative and practical designs to suit all styles of garden
-  Project management from design to completion
-  Construction by experienced quality landscapers
-  Planting schemes and border designs

**Maureen Lock**  
16 Huntley Down  
Milborne St Andrew

www.designergardens.biz

t: 01258 837929 m: 0778 660 8776 e: maureen@designergardens.biz



## In your Garden

Seasonal notes and tips from Maureen Lock of *designerGardens*

### Stars of the winter garden

YOU don't have to wait until spring and summer to enjoy clematis. There is a huge choice of early flowering clematis. Early flowering clematis have small, individual flowers but they are produced in such numbers they create one of the best winter displays in the garden. At the very start of winter, *Clematis cirrhosa v balearica* starts to flower and by January is a mass of creamy bells that are also slightly scented.

Early flowering clematis are very hardy and can generally be grown on any aspect – ie in the shade or in sun; they will also tolerate any type of soil (except very sandy soil – but we don't have to worry about that here). They like plenty of water during the growing season and will

benefit from a good splodge of well-rotted manure around the base in autumn or spring. Early flowering clematis need very little maintenance or none at all if you can cope with the mass of tangled



Left: *Clematis Montana white*

Above right: *Clematis armandii*



stems in the garden. They flower on the previous year's growth so it is best to prune them immediately after flowering (if at all).

*Clematis montana* is the latest of the early flowering clematis – it is very vigorous and needs to be clipped back rigorously every June as it will quickly outgrow its situation.

*Clematis armandii* is an evergreen clematis and is wonderfully scented. Choose from *C. armandii* 'Apple Blossom' which has pinkish flowers and a vanilla scent, or *C. armandii* 'Snowdrift' with hundreds of large pure white flowers and a strong almond scent. It does need a bit of pruning after flowering – remove some of the older stems and tie in new growth. Don't cut into thick, woody stems as they will die back but instead trace the growth back and prune just in front of a new shoot.

*Clematis alpina* and *C. macropetala* are other types of early flowering clematis to try.

#### Jobs for February

Windy weather may cause damage. Cut back summer shrubs that do not set buds.

Cut back the foliage of deciduous ornamental grasses before new growth begins.

Remove the blotchy leaves of hellebores to enjoy the flowers which can often get hidden by the foliage.

Keep the borders clear of fallen leaves and other debris to allow the bulbs to peep through.

Check out the seed catalogues and order in good time for the coming season.

Seed potatoes will start to appear in the shops – so once you have chosen the varieties you want, you will need to chit them (allow shoots to form) by putting them in a light, cool and frost-free place.

Cut autumn-fruiting raspberry canes to the ground to stimulate new canes, which will fruit in the autumn. Cut the tips of summer-fruiting raspberry canes just above a bud.

**A.J. LAKE**  
**Painting & Decorating**  
 Interiors & Exteriors  
**FREE quotes**  
 25+ years experience  
 References available  
 No job too BIG or SMALL!  
 Tel: 01258 837 687  
 Mob: 07989 817 826

# Kens Kabs

Lady Driver & 6 Seaters Available

Airports are our Speciality

New Wheelchair Accessible Service

**01258 456136**  
**www.kenskabs.co.uk**

**TRAVEL SAFELY IN OUR HANDS**

## **BERE REGIS MOT & SERVICE CENTRE**

TEL: 01929 472205

**MOTs**

(No Re-test fee within 10 working days)

**SERVICING  
REPAIRS**

BRAKES

EXHAUSTS

COMPUTERISED DIAGNOSTICS

LATEST EQUIPMENT FOR MOST MAKES

AND MODELS

OVER 30 YEARS' EXPERIENCE

IN THE MOTOR TRADE

COURTESY CAR AVAILABLE

Proprietor: Bill Greer  
Unit 1 Townsend Business Park  
Bere Regis, BH20 7LA  
(At rear of Shell Service Station)

**LOGON-WOODBURNERS LTD**  
**SALES & INSTALLATIONS**

**20% DISCOUNT**

ON STOVES FOR SUMMER INSTALLATIONS FROM  
MAY TO SEPTEMBER...BEAT THE WINTER RUSH !!!

WOOD  
AND MULTI FUEL  
STOVES

CHIMNEY & ROOF  
REPAIRS

FREE QUOTATIONS  
& FULLY INSURED

FLEXIBLE FLUE  
LINERS & RIGID  
FLUE SYSTEMS

ALL BUILDING WORK  
UNDERTAKEN



Checkatrade.com

**WWW.LOGON-WOODBURNERS.COM**

**CALL STEVE GUSCOTT**  
M: 07733 477729 T: 01258 858537

## OLD BARN DENTAL PRACTICE LTD



Mr John Woodward BDS. (Hons.) U. Lond. LDS RCS

GDC No: 42991

**Modern, cosmetic and restorative  
dentistry in a friendly atmosphere**

Manor Farm Road Bere Regis

Wareham Dorset BH20 7HD

Telephone: 01929 471023

Email: oldbarn@tesco.net

# Milborne St Andrew Neighbourhood Plan Work in Progress!

Supported by



Feb 2016



See us on  
on facebook

Pop a  
note to

the secretary:

28 Stileham Bank

or the chair:

Hurdles, The Causeway

[NPG@Milbornestandrew.org.uk](mailto:NPG@Milbornestandrew.org.uk)

## WE WILL BE NEEDING YOU.... FOR JUST ONE DAY!

We will be having a one-day workshop on a Saturday at the beginning of March. An expert will lead us through the Planning, Landscape, Architecture, Conservation and Engineering (roads). This will cover most of the areas of research that are left, meaning a shorter questionnaire!

## Proposals for land near Little England/Homefield

Mr Michael Miller, together with sons Quenton and Justin, asked for the opportunity to come and talk about overall plans for the family owned land. Asked why they wished to see us, they said they wished to talk about this "embryo plan", and felt it would be useful to gain feedback about nature/style etc.

The primary site of interest abuts Fox View, the ½ acre piece of land is "unsustainable" commercially for the farm business; an architect has drawn up a rough plan of potential buildings, although nothing has gone to the planning authorities. It is approximately 10 feet above the flood plain.

There are 2 barns left, they are not big enough for tractors, so house calves. There is very little space between the barn and the fence of Fox View House (about 4 feet). 2 years ago "kids" were found in the barn, used for storing straw. There was a den at the top of a stack, and they were smoking.

7 units are planned, around 71/72 m<sup>2</sup>, and having 1 to 2½ beds. They wish to try and retain the young people of the village. The buildings include terraced, semi-detached, and a flat above a group of garages, access will be through Fox View. The original site (Fox View) had permission for 10 units when sold, but the developer resubmitted plans for 13. This land has not been developed in the way they wished.

Regarding the larger plot of land behind Homefield and reaching the A354. The "Miller" land has been left as a trust, split amongst the family. There is an amount of land not in Michael's and his sons' control, as it has been left to another family member including land below Homefield, and behind Hurdles and Orchard Villa. Therefore any development would be back from the boundaries of existing buildings. There are no concrete plans, but a long-term wish to progress this development. This larger plot is 20 acres, and access would probably be off Lane End. Any development would be phased, with the family maintaining control of type and amount of development.

The other land identified is once again not in control of Michael and his sons, behind the Garage and abutting land leading to Dewlish.

We put forward our concerns about the use of grey water systems, permeable surfaces, sympathetic design, requesting they consider flood mitigating systems be built in. Michael Miller feels that with more dwellings, Wessex Water could use the revenue to upgrade the sewage system to alleviate the problem in the village. The plans are not at the same stage as the D Wyatt land, so some questions could not be addressed.

The Miller family were thanked for attending.

## IMPORTANT – CALL FOR SITES FOR HOUSING, PLAY OR WORK – REPLY NOW!

Our work on the neighbourhood plan not only has to establish what type of housing or employment (or even play areas and other things) the village, as a community, want to see develop over the next 15 years, but also where this could or should happen. So as well as asking everyone questions about what sort of development and how much we might need, we also need landowners to tell us whether they may want to have some development on their land. This way, we can make sure that the ideas we put into our plan are likely to happen.

So if you own some land in the parish, whether it is a green field site or buildings which could be converted or redeveloped, and would like the neighbourhood plan to allow some sort of development to take place, you should tell us now. How do you tell us? The easiest way on the village website is to click on this link <https://www.surveymonkey.co.uk/r/JQRFVJB> or visit our Facebook page <https://www.facebook.com/Milborne-St-Andrew-Neighbourhood-Plan-798102700248126/>, which will take you to an online form. Or let us know if you prefer an emailed link or a posted paper form – by contacting Sue on [NPG@milbornestandrew.org.uk](mailto:NPG@milbornestandrew.org.uk) or write to her at 28 Stileham Bank. This 'call for sites' will close on **Friday 26 February**, so please get in touch before that deadline. If the community as a whole agrees that your land is the best option for the development we need, we can put the right planning policies in place that would allow that development to happen.

There is now a **Terms of Reference** on the PC Website. We also hold a **Register of Interest** of all members of the working group.

# JURASSIC

— C O M P U T E R S —



*The incredibly friendly  
computer people*

Call Darrell Hounsome or Lee Thompson for  
jargon free, patient, friendly computer help  
for home and business users.

*Whatever your computer problem, call us... we can help!*

**01305 755668**

Repairs • Servicing • Sales • Training • Virus Removal

Email: [info@jurassic-computers.co.uk](mailto:info@jurassic-computers.co.uk)

Web: [www.jurassic-computers.co.uk](http://www.jurassic-computers.co.uk)

*Are you ready for a new PC or Laptop? If so, come and see us.  
We offer a complete service and will guide you through the whole  
process. We can supply, update, set-up and then transfer your  
documents/emails from your old system. We will give you the  
benefit of our combined 37 years experience gained whilst  
working for Kingston Maurward College in Dorchester.*

PROSPECT HOUSE, PEVERELL AVE EAST, POUNDBURY, DORCHESTER DT1 3WE



***Do you need transport for surgery and other  
medical appointments? If so, we can help.***

Milton Abbas Neighbourcar is an established  
voluntary transport scheme covering the area  
served by Milton Abbas surgery. We can take  
you to medical appointments and certain  
social events.

**WE ALSO NEED MORE DRIVERS – you can commit  
whatever time suits your circumstances.**

***Ring 01258 881709 to register  
or to obtain more information.***

***Local villages covered:  
Milborne, Cheselbourne and Dewlish***



[www.hustingselectrical.com](http://www.hustingselectrical.com)  
[office@hustingselectrical.com](mailto:office@hustingselectrical.com)  
Office: (01258) 837385 Workshop: 839052  
Mobile: 07973 574 215 or 07549 380 217  
New Services / Traditional Values  
Call or Email us with your requirements.

# Hustings Electrical Ltd.

**Electrical Contractor Since 1980 - New Technical Services Division**

Agricultural - Commercial - Industrial - Bespoke Panel Building & Controls  
Domestic - Equestrian - Fire & Intruder - SMS & Programmable Logic Automation  
Alarms - Emergency Lighting - Test & - Computing Infrastructure Services  
Inspection - Control Systems & Panels - Data Recovery - Firewall Security  
CCTV - Data Cabling and Computing - Custom Builds & Repairs - Malware Rescue  
Security & Access Control Systems - Website & WebApplications - IP-CCTV

10 The Rings, Milborne St Andrew, Blandford Forum, Dorset, DT11 0HY



# This Month in History: February

## Births

**February 4th, 1902:** Charles A Lindbergh, born in Detroit, Michigan. Charles rose from complete obscurity as a US Air Mail pilot and Army Air Corps Reserve to overnight fame for making the first ever trans-Atlantic flight non-stop from New York to Paris. The flight took 33 hours and he was awarded the Medal of Honour for his exploit.

**February 19th, 1473:** Nicolaus Copernicus, born in Royal Prussia, was a Polish mathematician and astronomer who formulated a model of the universe that placed the Sun at the centre of the universe instead of the Earth.

**February 26th, 1802:** Victor Hugo was a French poet, novelist, and dramatist of the Romantic movement. He is considered one of the greatest and best-known French writers, and penned *Les Miserables* and *The Hunchback of Notre Dame*.

## Deaths

**February 1st, 1851:** Mary Shelley, the author of *Frankenstein*, dies of a brain tumour at 53. Shelley wrote *Frankenstein* when she was 21, and throughout her life helped promote and even edited the works of her husband Percy Shelley.

**February 2nd, 1979:** Sid Vicious, bassist/vocals for the Sex Pistols, dies of a heroin overdose at 21. Known for his hard-punk attitude and abusive comments to audience members, Sid helped promote the Sex Pistols before being central to their break up in 1977, and then beginning a short solo career.

**February 18th, 1587:** Mary Queen of Scots, cousin to Queen Elizabeth I of England, is beheaded aged 44 on her cousin's orders. She was executed because of her strong claim to the English throne, and her being a Catholic.

**February 25th, 1723:** Christopher Wren, astronomer/architect, died aged 90 of natural causes. He is one of the most highly acclaimed English architects in history, rebuilding 52 churches in London after the Great Fire in 1666, including his masterpiece, St. Paul's Cathedral. Ironically he never actually studied architecture, having graduated from Oxford University with a degree in Latin and Aristotelian Physics.

## Events

**February 1st, 1901:** The royal yacht *Alberta* brings the body of Queen Victoria into Portsmouth harbour en-route to her funeral in London tomorrow. The Queen, aged 82, died on January 22, at Osborne on the Isle of Wight.

**February 11th, 1975:** *Iron Lady* Margaret Thatcher, becomes the first woman leader of the British Conservative Party. She served three terms in office as PM from 1979–1990, however following a series of small strokes in 2002, she was advised to withdraw from public speaking, and in 2013 she died of another stroke in London at the age of 87.

**February 15th, 1971:** Pennies, bobs and half-crowns all disappear as Britain goes decimal. The decision for decimalisation was finalised by Chancellor James Callaghan and PM Harold Wilson, and according to folklore, the decision took merely seconds to make.

**February 22nd, 1797:** Around 1,400 French troops attempted to invade Britain, landing on the Welsh coast at Fishguard. However, the brave ladies of Fishguard saved the day, and the French surrendered two days later.

Mark Ferguson

# Small Businesses in MSA No: 3 The Dog Groomer

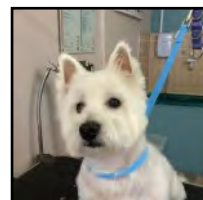
EMMA Whittington, aka The Dog Groomer, moved from Tarrant Keyneston to Milborne St. Andrew in December 2014 to live in Staddlestones on Milton Road.

Those of you who pass by may have seen the milk churn which proclaims her business. She was brought up in the New Forest, Gaunts Common and Branksome, Dorset, the middle of three sisters and educated at Talbot Heath School. Her childhood home was shared with dogs, horses, ponies and cats. Emma initially worked for an office plant hire company.

Her duties were to tend to the displays, feeding, changing and generally caring for them.

Whilst completing a Hospitality degree at Bournemouth University and on placement in Burford, Oxfordshire, she met her future husband, a gamekeeper. They lived for 17 years in Oxfordshire between Burford and Stow where she bred and trained working dogs; Labradors, flat coat retrievers, cocker and springer spaniels. She and they went out on shoots to pick up pheasants. One of those Labradors, who she describes as a 'failed work dog' called Purdey still lives with her together with a border terrier and a beautifully marked Bengal cat. Her 14 year old Irish sports horse, Kenny, undid the healing process on a damaged foot by attempting to follow the Hunt and had to be put down. Following a two year City and Guilds Level 3 course in Dog Grooming she began a gardening business to support her new venture which has now been up and running for two years. Having damaged the anterior cruciate ligament in her knee and also causing painful back problems she regretfully gave up gardening. Her clients were devastated.

Emma has three sons, 19 years, 17 years and 12 years. Her partner of four years, Andy, a farmer, has an eight year old daughter and seven year old son. The latter spend their holidays with them. She speaks fondly of her first flat coat retriever, Sam, who died 13 years ago. The



only time she has been bitten was as a child of 10 years on her lip and then at 12 years on her eyebrow having disobeyed her mother's warning not to bend down whilst petting a dog. These experiences did not put her off dogs. In her words she rarely gets a 'bad' dog only if it is attacked by another. In her business she offers

wash, dry and brush, clipping, nail trimming and ear cleaning. Emma is keen to stress that she gives one to one attention and will only take one dog at a time. Currently her clients come from MSA, Blandford, Tarrant Keyneston, Milton Abbas, Ansty and Dewlish. She showed me her business premises where the dogs are washed and groomed. There is a deep bath with steps up to it, a large 'blaster', clipper blades, a huge pink hair dryer and a rail for restraints. I am told that it is crucial to never leave a dog unattended on a table or in a bath as, whilst they are restrained, it is possible to jump and strangle themselves. She believes that she can 'read' dogs well and is good with nervous dogs having an aptitude for calming, stating that they should be handled with confidence in a positive way as they can easily pick up the handler's nervousness and moods. There appears to be no inspection of dog groomers' premises or their methods and Emma says that there are some operating without qualifications. She has always groomed her own animals, dogs and horses. In the past she competed in horse trials, rode with the Hunt, belonged to Pony Clubs and Riding Clubs. She has led a life surrounded by and caring for animals clearly loving her work offering a very personal service.

If dog owners wish to contact Emma her details are as follows: to view her website at [dorsetdoggroomer.co.uk](http://dorsetdoggroomer.co.uk)

Email [emmawhittington@btinternet.com](mailto:emmawhittington@btinternet.com). Telephone numbers, mobile: 07824 392813 landline: 01258 839171. Carole Fornachon



**Deadline for the March Reporter is 14th February**



Family Law Advice for a fixed fee of £100\*

**What Family Law advice will I receive?**

One hour's advice with a family law solicitor.  
Summary letter of the advice and recommendations going forward.

Arrange a meeting today

01258 459361

www.blanchardsbailey.co.uk

\*exc. VAT. Terms & conditions apply

In need of a Window Cleaner?

**Darren**

for a friendly and reliable service



Fully insured for complete peace of mind

For that clearer vision just call:

**01747 825167 / 07704 656777**

or email: clearvision1996@hotmail.co.uk

Domestic and Commercial

Gutters Downpipes Facias Soffits

Conservatories Flash Roofs



**Chris Perrins  
Chimney Sweep**

Solid fuel stove installer

Flue relining

Fire place alterations

Chimney repairs

Cowls fitted



01305 849470

07824 698109

cswEEP.co.uk

cfperrins@tiscali.co.uk



**Queen Thorne**  
LANDSCAPES



RHS CHELSEA SILVER GILT  
www.queenthorne.co.uk

Purveyors of the Finest Gardens

**01935 850848**

Extend your home and maximise  
your outdoor space

- Consultation
- Design
- Construction
- Ground Preparations
- Water Features
- Turfing & Seeding
- Planting
- Renovations
- Wild Flower Meadows
- Lawn Care

As seen on the **BBC**



## A Taste of the East at the January WI

IT was good to see so many visitors for our first meeting of the new year. Being an open meeting, we welcomed members from other WIs as well as from the village. Teruko Chagrin from the Dorset-based White Pepper Cookery School was with us to give a demonstration of Japanese cookery, in particular a Udon noodle salad. Noodles are a staple part of this cuisine, often served chilled with dipping sauces, or in soups or hot dishes.



Stressing the simplicity of the one-pot dish, Teruko showed how to prepare a basic stock, using boiling water with the addition of some interesting looking dried fish, which she grated, although instant stock sachets can be bought if the fish is not easily available. Udon is the thickest of the noodles,

white and wheat based. The dish seemed to be ready in record time and was served in large bowls with salad, seasoning and dipping sauces. Needless to say, everything was sampled and enjoyed!



Our social time included refreshments with delicious homemade cakes and a raffle with a range of prizes provided by our committee. An understandably brief business meeting followed. Our Christmas lunch at The Royal Oak had been much enjoyed, so much so there was mention of a 'doggy bag' for someone's Christmas pudding . . . We are reminded that the next Pub lunch is on Monday 22nd February at The Royal Oak, always an enjoyable monthly get-together.

Our next meeting on Thursday 11th February, takes us to warmer climes when Chris Shaw will talk about 'Amazon to Galapagos'. The exhibition will be for a holiday souvenir. Please do join us, we would love to see you there.

Pat Bull

## Pane in the glass!

IF there's something strange going on in your neighbourhood, who are you going to call? Definitely the Police or maybe Ghostbusters! However there has been no sonic boom reported and the Ouija board has already been removed!

*Really*, I hear myself saying, how very bizarre, as Milborne St. Andrew residents Simon and Chris Buckingham explains about a very weird phenomenon occurring at No. 18.

Thirteen (*unlucky for some and certainly in this case*) out of 23 windows at their humble abode have all cracked within 36 hour duration. Even more bizarrely all of the damaged windows are on the first and second floors with the remaining unaffected ones all on the ground floor.

Surely this wouldn't be down to vibrations from the bell ringers on a Tuesday night is my immediate thought as their house is situated right next door to the church?! But it appears not as this unusual turn of events began on a Sunday!

Simon and Chris's unaccountable experience appeared to occur soon after having their windows varnished in late November. Was this a significant trigger? Was the weather also a contributing factor in that it rained over some of the duration and then it was clear, dry and cold the next which then instigated the central heating coming on?

Apparently and interestingly enough spontaneous glass breakage *IS* a phenomenon by which toughened glass (or tempered) may spontaneously break without any apparent reason. The most common causes are minor damage during installation such as nicked or chipped edges later developing into larger breaks normally radiating from point of defect, binding of the glass in the frame causing stresses to develop as the glass expands and contracts due to thermal changes or damage due to wind, internal defects within the glass such as nickel sulphide inclusions, thermal stresses in the glass or inadequate glass thickness to resist wind load.

However, it appears that in this particular case and in the manufacturer's opinion that the space bars in the glass should have a difference of 2mm between the outside space bar and the inner one to allow for contraction. Subsequently if the space bar is identical in size all the way round and the glass contracts it will cause a fracture.

Luckily for Simon and Chris no sonic boom occurred as this would not have been covered by their insurance, thankfully phenomena are!!

Every day's a school day!!

Louise Richardson



# Barry Bright

Carpenter and General Builder

*FREE ESTIMATES*

Local builder for last 30 years

All building works undertaken

Extensions, All carpentry and roofing

Repairs, Maintenance

Hard landscape, Fencing, Brick Pavior Drives

Kitchens, Bathrooms

Double Glazing, Conservatories, Carports  
and all plastic cladding

Also decoration work undertaken

Telephone: 01258 837042 Mobile: 07787551256

Greenacres, Dorchester Hill, Milborne St. Andrew

Blandford Forum, Dorset DT11 0JQ

***Philip Trim***  
***Contractors***

**ULTIMATE LIQUID & SLURRY SOLUTIONS**

## *Septic Tanks / Liquid Waste Management*

- \* *Domestic & Business Septic Tanks*
- \* *Liquid Waste Disposal*
- \* *Local Professional Service*
- \* *Event Hire*

***RING NOW FOR DETAILS***

**01929 472192**

**07971 005579**

**Chamberlaynes Farm Workshop**

**Bere Regis Wareham BH20 7LS**



National Association of  
Agricultural Contractors



Environment

Agency Reg.

Wessex Water

Organic Waste

[www.philiptrimcontractors.com](http://www.philiptrimcontractors.com)

Email [steve@philiptrimcontractors.com](mailto:steve@philiptrimcontractors.com)



# LETTERS to the reporter

Milborne St. Andrew Scout Post

I would like to thank all those who supported the Scout Post this year, particularly those who helped with the collection, sorting and delivery of the cards.

As a point of interest, the Scout Group handled over three and a half thousand cards, with many being sent to Dorchester and as far as Bridport. The Group has made in excess of £500, the final figure depends on what other Groups handled.

This all would not have been possible without teams of deliverers and of course grateful thanks must go to the Londis shops in Milborne and Puddletown, and The Oak at Dewlish, for allowing us to put our yellow boxes in their establishments, without which, we would not be able to collect your cards.

Kind regards

Brian Burton

Group Scout Leader, Milborne St. Andrew Scout Group

## Are you housebound but would like someone to chat with?

A NEW service is being launched in Milborne St. Andrew to link volunteer visitors with people who have difficulties getting out and meeting others. This could be because they have mobility problems, or they have to care for someone at home who cannot be left alone, or they have difficulties leaving the house, or they have a short or long term condition which makes it difficult to go out.

If you think you would like to find out more call to the co-ordinator on 07947 929074 or send an email to msafriendlyvisitors@gmail.com. If you decide it is what you want you could be put on the list to be visited by a trained volunteer or to become a volunteer visitor.

Pam Shults

### Local small-ads

Small ads of less than 30 words from local, private, advertisers are published **free of charge**. Also featured on our Facebook page.

**For Sale – Two thee foot sprung divan bed bases** (190cm x 90cm). Nine inches high plus castors. Nearly one year old. £20.00 each. Telephone 01258 837700.

**Free – Plastic knives, forks and spoons**, approximately 50 of each. Telephone 01258 837700.

## WALKING FOOTBALL! LOVE Football? Want to stay Active?

*Walking Football, a slower version of the beautiful game!*

The game is small sided, with no running on or off the ball, very little contact and kick-ins instead of throw-ins. With less stress on the body and no real sudden change of direction or cutting movements, the game allows participants to play in a safe environment.

Walking football has become increasingly popular and is designed to help people live an active lifestyle, as well as to support getting people back into football who have stopped playing due to age or injury. Long term benefits can include reduced heart rate and blood pressure and better mobility.

As well as offering health benefits walking football offers social benefits – the opportunity for participants to meet new people, prevent isolation and create interaction for individuals and small groups. Many sessions are increasing in numbers simply due to word of mouth within local communities and players sharing their positive experiences from taking part in the game.

Sessions are taking place across Dorset for men and women keen to come back to playing or brand new and wanting to stay healthy, make friends and socialise. We are always keen to support new sessions where there is demand and for those who want competition we are also developing a Walking Football League across the county.

For details on how to join sessions or to enter a team into the league please contact at justine.mosley@dorsetfa.com or 01202 688277.



## Round Robin Ramblers

*The local villages walking group*

WALKS are normally held on the first Sunday and the third Wednesday of each month. Please join us as we enjoy exercise, good company and the wonderful Dorset countryside. **Any questions, please feel free to contact: Ian Bromilow, 01258 880044.**

**Sunday 7th February – 1.30pm** (note the earlier time)

**Gussage All Saints**

Meet near the church in Gussage All Saints, off A354 at Cashmoor.

Grid reference: SU 998108 on OS Explorer Sheet 118 (approx. 4.5 miles)

**Wednesday 17th February – 11.00am**

**Sherborne, Haydon and Folke**

Meet outside the church in Haydon, 2 miles SE of Sherborne

Grid reference: ST 670157 on OS Explorer Sheet 129 (approx. 6 miles)

Bring a packed lunch.

**Sunday 6th March – 2.00pm**

**Charlton Marshall**

Meet near St Mary's Church, Charlton Marshall

Grid reference: ST 900041 on OS Explorer Sheet 117 (approx. 4.5 miles)

**Please note:**

**Who** All welcome including well-behaved dogs and their responsible owners. No pre-booking required just turn up.

**Wear** Suitable clothing for wet conditions and location, walking boots or Wellington boots.

**Bring** Waterproofs and refreshments (packed lunch on Wednesdays).

**Pace** We go at the pace of the slowest.

**Terrain** Expect mud, inclines and stiles.

**Aim** Keep fit, enjoy the Dorset countryside and each other's company.

**Legal** We look after one another but in the end you are responsible for yourself.

**Selling a car? Can't face the . . .**



**hassle?**

We buy cars, bikes, campers and vans for cash at a time to suit you. Trading in elsewhere? We can usually offer more . . . Halcyon Motors, now based in Milborne St. Andrew, is a small, friendly business and we will happily come to you. Impartial advice comes free!

Buying? Visit [www.halcyonmotors.co.uk](http://www.halcyonmotors.co.uk) to see "warts and all" descriptions and photos of our current stock. Warranties with all cars. Part exchange welcome. Call Don MacLeod 01258 839209 or 07782 189555 (Mon - Sun, 8.00am - 9.00pm)

## Did you identify this?

The photograph in the January *Reporter* was taken outside the White Cottage Manor Farm.

Congratulations to Robin Keller who was the only person to send in the correct answer.

Try your luck this month on page 12.



**Deadline for the March issue is 14th February.**

## KMc Electrical Services

**All types of electrical work undertaken for domestic, industrial and commercial properties**

- Extra points to full rewiring
- Test & Inspection of building wiring
- Three phase
- Emergency callouts

**No job too small**

**Professional, Quality service**

Tel: 01258 881439

Mob: 07712 646131

Email: [info@kmcelectrical.co.uk](mailto:info@kmcelectrical.co.uk)

ELECSA

REGISTERED MEMBER  
ECA

TRUST  
MARK  
Approved Contractor



## HEALTHY PETS LTD

Come and see us for full dietary advice plus friendly service

Full range of foods, treats and toys for your faithful friends  
Specialist in wild bird food

**DELIVERIES TO YOUR AREA EVERY FORTNIGHT**

website - [www.healthypetsblandfordltd.co.uk](http://www.healthypetsblandfordltd.co.uk)

Unit One, Milldown Business Centre  
Shaftesbury Lane, Blandford, DT11 7TD

e-mail - [dave.healthypets@btconnect.com](mailto:dave.healthypets@btconnect.com)

**Tel: 01258 459066**

  
**MINTERN**

**BUILDING & LANDSCAPING LTD**

For all your Garden and Home Improvements

– over 20 years local experience –

Extensions, patios, landscaping, stonework, brickwork, fencing and plastering

All aspects of Garden and Home Improvements

For a free, no obligation, quotation please call:

07977 070703 or 01963 363535

[Carl.mintern@gmail.com](mailto:Carl.mintern@gmail.com)

**“Hold a Fish and Chip Supper to help spinal cord injured people rebuild lives after injury”**



## **Great British Fish and Chip Supper – Friday 20th May 2016**

WANT to eat Fish and Chips, while raising money for charity? Hold a fish and chip supper on Friday 20th May 2016 whilst raising awareness of spinal cord injury and supporting SIA’s vital services.

You can hold a fish and chip supper in your own home, at work or hold a larger supper at your local community centre.

SIA will provide a fundraising pack containing hints and tips, recipes, invitations and donation envelopes. By inviting eight friends and asking them to donate an additional £5.00 means you will raise at least £40.00 from your supper but we will also give you additional fundraising ideas to raise even more money for SIA.

Just £50 could contribute towards the support from our Peer Support Service for one hour, in a district general hospital or Major Trauma Centre.

In 2016 we want to make the batter matter and raise £40,000 from everyone holding suppers. Last year we raised £12,000 from the suppers.

The money raised from the suppers will help the Spinal Injuries Association offer support to individuals who become paralysed and their families, from the moment a spinal injury occurs, and for the rest of their lives by providing services and publications which enable and encourage paralysed people to rebuild lives after spinal cord injury.

Every year in the UK over 1,000 people experience a spinal cord injury and there are an estimated 40,000 spinal cord injured people in the UK alone.

Community Fundraising Manager, Elizabeth Wright, says, “The Fish and Chip Supper is a wonderful opportunity for a great evening with friends and family. We are also encouraging people who work to hold a Fish and Chip Lunch in their work places to raise even more funds. You may be even a local community group wanting to run a fun evening with your group.

For more information or request a fundraising pack call Elizabeth Wright on 0845 071 4350 or email [fundraising@siafishandchips.co.uk](mailto:fundraising@siafishandchips.co.uk) or visit [www.siafishandchips.co.uk](http://www.siafishandchips.co.uk)

---

## **All Change in the Village Hall Committee**

AFTER many years the committee will be saying ‘goodbye’ to two key management team members at the next AGM. Elizabeth has been the treasurer for many years and feels that it is time to hand over to someone else and Paul, our current Chairperson, whose job requires him to work away from home, is unable to continue in this role.

New members will be needed and those who are interested should speak to one of the committee in the first instance. If they want to apply they can do so in writing to the secretary so that their applications can be considered. The next AGM is in April, details will be posted in advance.

The film nights are now well established and are very popular; many thanks to Alice and Roger who organise these nights. If you haven’t been yet you will be surprised to know that tickets are only £3.50 each, which is very good value. Alcoholic and soft drinks are available at low prices and ice creams are sold during the interval. If anyone has a particular film in mind let Alice or Roger know.

After the disappointment of not being granted Big Lottery funding for new play park equipment, committee have been in touch with Julie Witt, Community Resource Worker from the DT11 Forum Community Partnership. She has offered to help us apply for grants and is very positive that we can get the funding from different sources. Meanwhile the Village Hall Committee continue to do their own fundraising.

*Pam Shults*

## **Big slim for Julie is a game-changer**

TO many struggling to keep to New Year’s resolutions of shedding the Christmas pounds and more, Milborne’s Julie Hatt is something of an inspiration. In a year and a half, she has gone from a size 26 to a size 14/16, losing seven and a half stone. She was invited onto Radio Solent recently to tell the Big Dorset Brunch programme all about her big achievement and how it has changed her life.

Julie says, “The day at Radio Solent was fab!” where she was interviewed by presenter Zoe Kleinman. Before this, the story of her big slim had appeared in the Dorset Echo. Julie had tried to lose



weight in the past with little effect, but the difference was joining a slimming group, in Broadmayne. She says, “It was a friendly group and there wasn’t any judgement – it felt like the rest of the group were friends right from the start”. She continued to attend weekly and results started to show.

“Joining the group was just what I needed, I got support from people in the same situation as me – we all wanted to lose weight”. Julie says, “You just have to remember it’s not a race, but a journey”. She eventually reached her target weight in November last year.

The difference it made to her life was immense – not only is she fitter, healthier and has bags more energy but, she says, what she has lost in weight she has gained in confidence. And it has transformed her life in another way. She says, “It has changed my life completely but I never imagined it would lead to a new career that I love!” Julie has started her own Slimming World group, which meets in Puddletown on Monday evenings and has plans that it won’t stop there.

“My aim is to open more groups in the future so I can help more people to achieve their dream weight – and keep it off”, she says.

*Ed Richards*

A traditional village pub where families are made welcome  
in **Milborne St. Andrew**

— THE —  
**ROYAL  
OAK**

**Carvery**

**Available Friday**

**12 noon—2.30pm £7.50**

**Friday from 6.00pm**

**and all day Sunday £8.95**

**New Family Friendly  
Dining Area now available**

**ROYAL  
OAK**



**f** Find us on  
**Facebook**

follow us on  
**twitter**

### **What's on in February**

*Sunday 7th at 7.30pm*

*World's biggest pub quiz —  
teams of four please register your  
interest before the event,  
all donations to St. Andrews Church*

*Thursday 11th — Curry Night*

*£9.95 all you can eat*

*Thursday 25th — Pie Night*

*£9.95 all you can eat*

### **Date for the Diary!**

*Mother's Day Sunday 6th March*

*A gift for all mums on pre-booked tables.*

**takeaway  
menu  
available**



**Dog  
friendly**

tel: 01258 837 248

DORCHESTER HILL MILBORNE ST. ANDREW  
DORSET DT11 0JG