

BACKGROUND

The Village Plan process was initiated by the Parish Council in the Spring of 2005. The process has been carried out quite independently from the Parish Council in order to ensure that it reflects the true wishes of the residents of Milborne St Andrew. Once it has been adopted by the Residents it will be used by the Parish Council to draw up their Business Plan and forwarded to North Dorset District Council for use during the compilation of their New Core Structure Plan.

In March 2009, 882 Questionnaires were issued to Adults and 172 to Young People. At the end of the month 456 Adults and 43 Young People returned their Questionnaires. Officials of Dorset Community Action have advised that the return rates of 52% and 25% are more than sufficient to validate the survey and resulting proposals.

Unfortunately it has taken an excessively long time to reach this stage due to a long running problem with funding and the unfortunate illness of some of those leading the project.

This information has been painstakingly extracted from the survey papers by Peter Anthony, Sid Coe, Richard Lock, Hilary Baumberger and Peter Dunkley. The resulting data was correlated and converted into its current form by Tony Dyer with the valuable assistance of Peter Dunkley, Richard Lock, Michael Hopper and John Kane. From this a discussion document will be produced and published in The Reporter for discussion at the Annual Parish Meeting in early May.

When the Village Plan has completed passing through the democratic process in the Village, it will be placed on the Village Website as a living document to be updated as required.

Printed copies of the Village Plan will be made for use by Local Government Authorities but this source data will only be published on the Website.

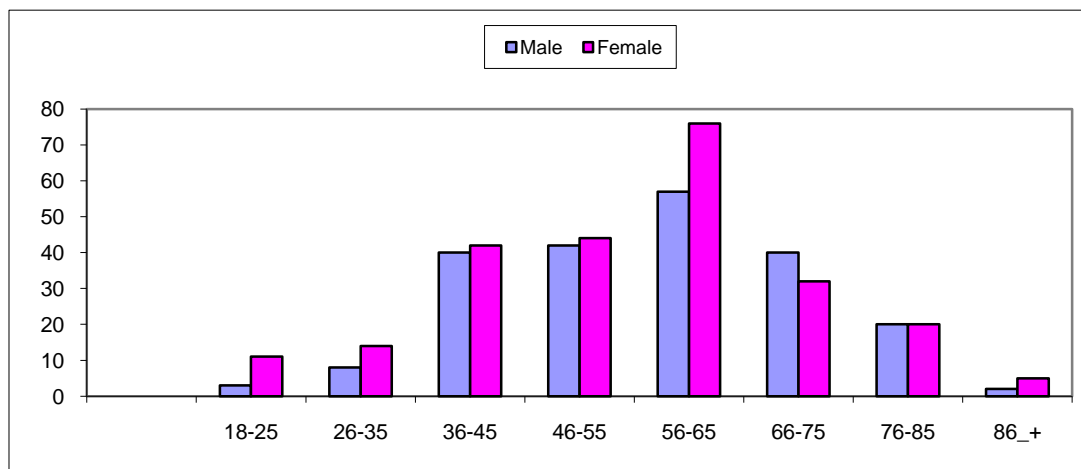
This document is set out in the following Sections:

Section 1	Demographics: Age, Gender, Origins
Section 1A	Young People
Section 2	Village Facilities and Shopping
Section 3	Health, Social Care, Security and Housing
Section 4	Social Activities, Amenities and Environment
Section 5	Employment, Business and Education
Section 6	Sport and Recreation
Section 7	Travel, Transport, Roads and Pavements

SECTION 1 - DEMOGRAPHICS

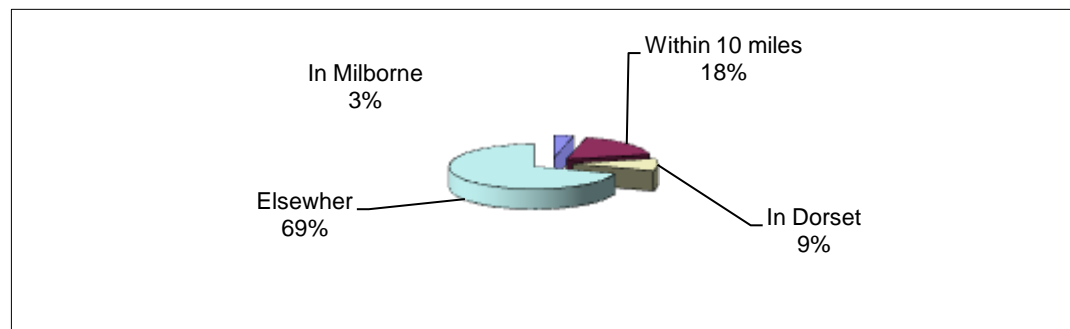
1.1/1.2 Age range and gender

Age range	Male	Female
18-25	3	11
26-35	8	14
36-45	40	42
46-55	42	44
56-65	57	76
66-75	40	32
76-85	20	20
86_+	2	5
Respondents	212	244



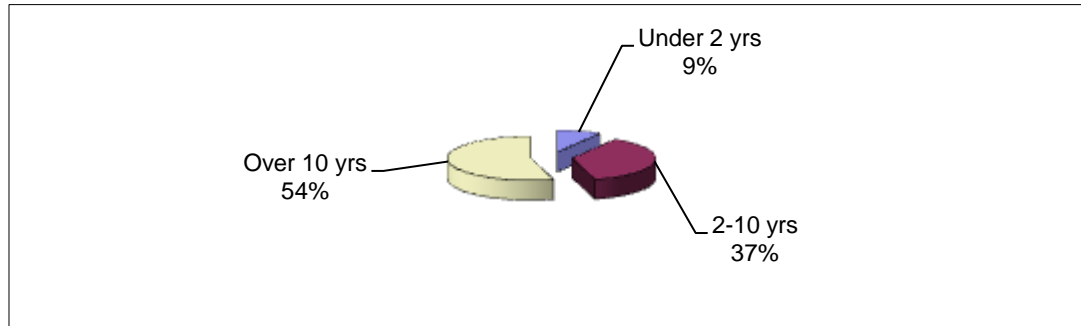
1.3 Place of Birth

In Milborne	17
Within 10 miles	81
In Dorset	40
Elsewhere	318
Respondents	456



1.4 Length of Residence In Milborne

Under 2 yrs	39
2-10 yrs	168
Over 10 yrs	247
Respondents	454



1.5 Reason for Moving to Milborne

Affordable Housing	52
Retirement	82
Work	115
Other	185
Respondents	434

