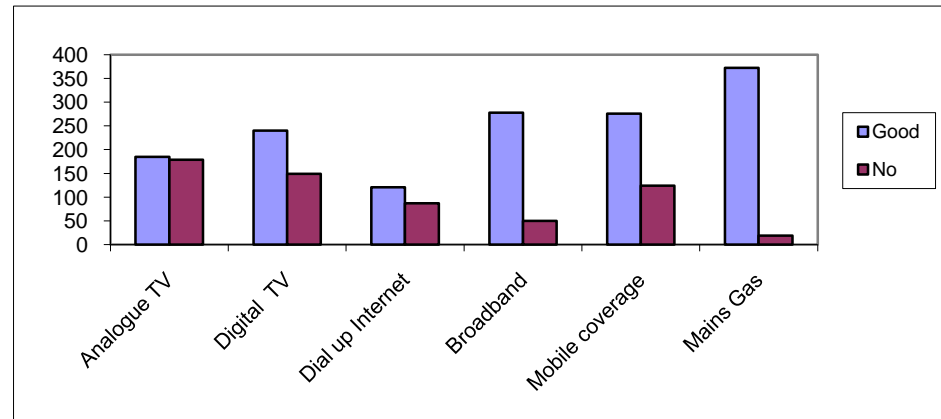


## **SECTION 2 - VILLAGE FACILITIES AND SHOPPING**

### **2.1 Quality of Services**

#### **2.1 Quality of Services**

Service	Good	No	Responses
Analogue TV	185	179	364
Digital TV	240	149	389
Dial up Internet	121	87	208
Broadband	278	50	328
Mobile coverage	276	124	400
Mains Gas	372	19	391



### **2.2 Use and Speed of Broadband.**

Respondents

128 A full spectrum of uses from email and entertainment to shopping banking, work and research.

Speeds

22 use it for work, 3 used internet banking, 13 for shopping. Mainly used for emails, general search and entertainment.  
1 to 8mb depending upon provider. The BT Exchange is ISDN compatible.

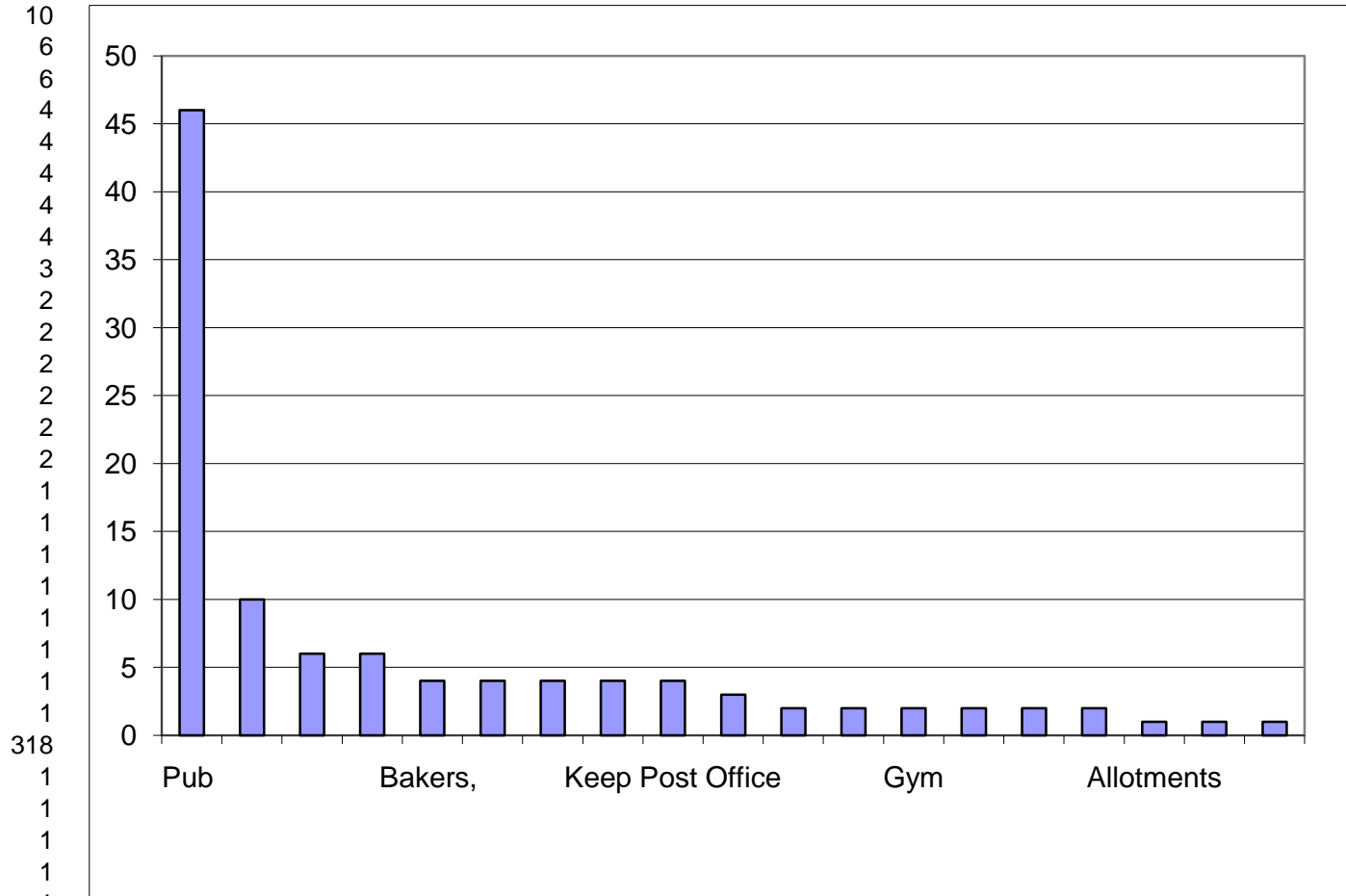
Section 1

Demographics

Section 1A

**2.2 - What additional Utilities would you have in the Village?**

Pub	46
Garage/Petrol Station	10
Cable Available & unbundled tel ser	6
Takeaway	6
Bakers,	4
Butcher	4
Café/restaurant	4
Have all we need	4
Keep Post Office	4
Larger/Better Londis & opening time	3
Foot paths from boundaries to Squa	2
Freeview	2
Gym	2
Mains gas in all areas	2
Pub with accommodation	2
Swimming pool	2
Allotments	1
Bottle bank	1
Cycle paths to other villages	1
Dentist	1
District heating	1
Doo poo bins	1
Farm shop	1
Fish & chip shop	1
Free broadband	1
Free Cashpoint	1
Hardware shop	1
Launderette	1
Lawn mowing service	1
Library	1
more buses	1
more reliable electricity supply	1



318

**2.3 (continued ) What additional Utilities would you like to see in the Village?**

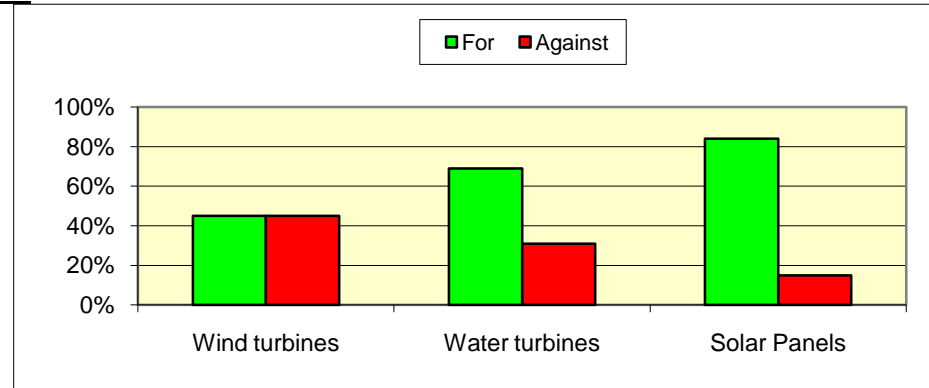
More public transport	
Pharmacy	1
Public toilet	1
Public wifi	1
Taxi	1
Telephone providers other than BT	1
Tennis courts	1
Wheelie bins	1
Serviceable telephone kiosk	1
Youth club	1
	1

**2.4 would you like to see sustainable energy sources produced in the Village?**

	For	Against
Wind turbines	45%	45%
Water turbines	69%	31%
Solar Panels	84%	15%

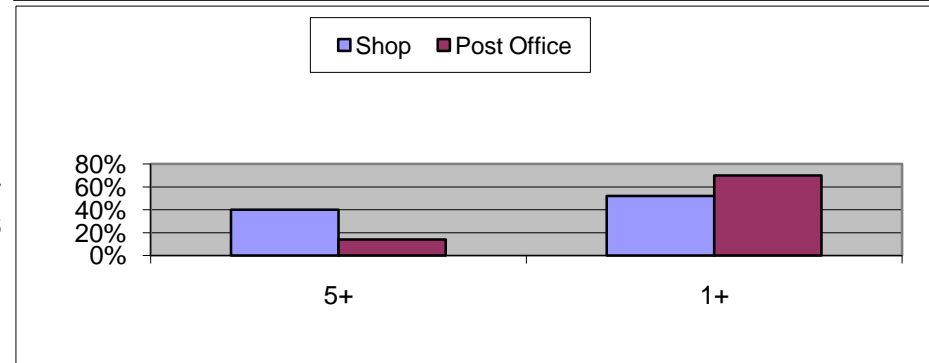
Several mentions were made of bio and geothermal energy and provisions .  
for harvesting rain water.

Respondents 353



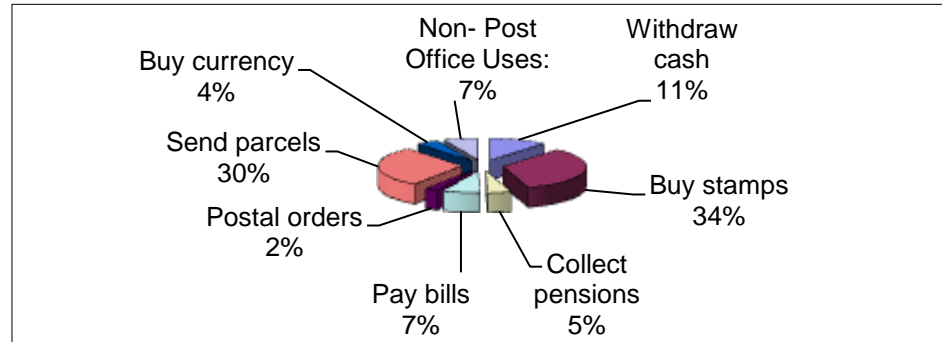
**2.5 Average weekly use of Shop and Post Office**

	5+	1+	0	Respond.
Shop	40%	52%	8%	447
Post Office	14%	70%	16%	446



**2.6 Post Office transactions.**

Withdraw cash	121
Buy stamps	365
Collect pensions	50
Pay bills	77
Postal orders	27
Send parcels	319
Buy currency	47
Non- Post Office Uses:	72
Shop	56
Collect prescriptions	10
Banking	6



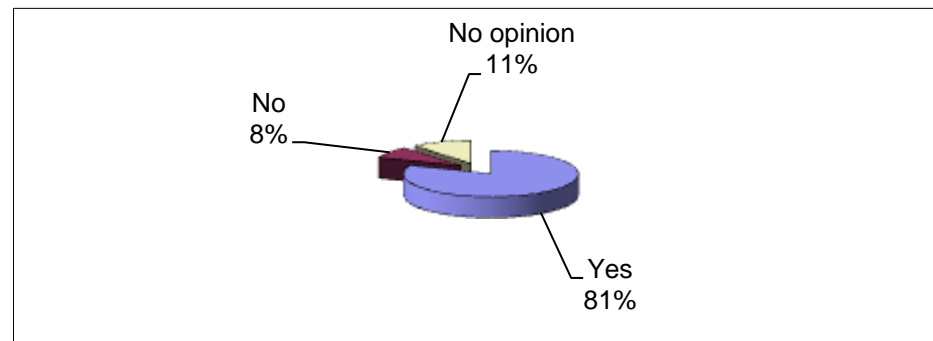
**2.8 Shopping in the Village**

This did not lend itself to a graph or pie chart

	Applies	Not Apply
Buys most groceries in Village	254	205
Buy most groceries out of village	299	160
Only buys last minute items	411	48
Village shop too expensive	263	196
Shop in village convenient	208	251
Shop near work	339	120
Use village as no transport	136	323
<b>Responses</b>	<b>1910</b>	<b>1303</b>

**2.9 - Overall are you satisfied with the Village Shops?**

Yes	350
No	35
No opinion	48
<b>Responses</b>	<b>433</b>

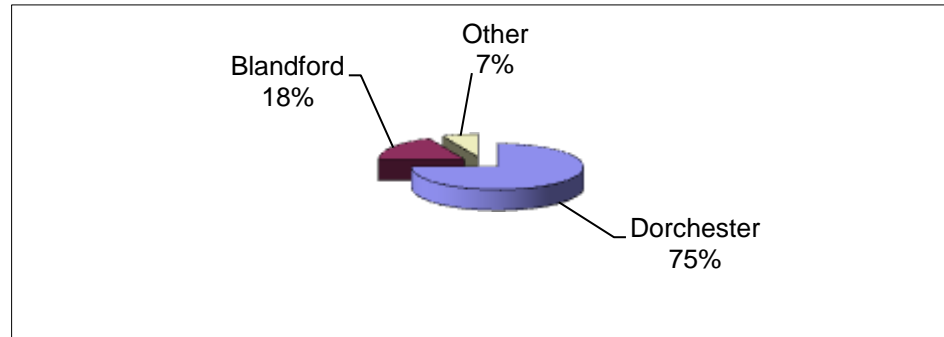


**2.10 Those who were dissatisfied would like to see:**

Baker	13
Staff training	12
Larger range, more competitive price	10
Local produce	9
Larger shop with larger range of goods	9
Better quality/range of fruit & veg	9
Butchery	5
Farm Shop	4
Organic produce	3
Post Office should be able to offer wider PO services	2

**2.11 Majority of Shopping carried out in:**

Dorchester	334
Blandford	81
Other	30
<b>Respondents</b>	<b>445</b>



**2.12 Response to concept of paying Additional Parish tax to fund facilities etc in Blandford?**

For	40
Against	338
Don't Know	60
<b>Respondents</b>	<b>438</b>

