

See page 5



Reporter

News and Views from around the area

Volume 16 Issue 1

January 2024

www.milbornestandrew.org.uk/reporter

facebook.com/MilborneReporter

Milborne St. Andrew



WE WISH ALL OUR READERS
A VERY HAPPY NEW YEAR



FOND FAREWELL VETS

We offer a gentle and dignified home visit euthanasia service for dogs and cats in and around Dorset.

From the initial telephone consultation, to the home visit and following aftercare, we will do all that we can to support you throughout this difficult time.

If we can help, please contact us on
01300 320 332 or 07442 27 27 28
info@fondfarewellvets.co.uk

www.fondfarewellvets.co.uk

MSA Community Café

@ the Village Hall



Saturday 13th January

10.00am until Midday

Come along for bacon butties, coffee and cake
or a soft drink whilst you meet up with friends.
Books and puzzles 50p min donation.
Cash or card payment accepted.

Afternoon Yoga in MSA Village Hall

- Improve your strength, flexibility and balance
- Relax your mind
- Thursdays in term time
- 3.30pm to 4.30pm
- £7.00 per class
- Mixed ability
- Suitable for all ages

Please contact Angela Johnson – BWY trained teacher
manda.johnson@outlook.com / 01258 839060

Disclaimer

THE views expressed in the *Reporter* are not necessarily those of the editorial team. Also, please be aware that articles and photographs printed in the *Reporter* will be posted on our website and so are available for anyone to access. The *Reporter* is not responsible for the content of any advertisement or material on websites advertised within this magazine.

Please note

Please ensure that your anti-virus software is up to date before e-mailing. Copy should be sent as a Word (or other) text file and do not embed pictures, logos, etc. into the document. Photos should be sent as separate .jpg files. Do not send articles as .pdf. Do not send anything as .html as it will be deleted on arrival. All these things may seem small to you but it does make all the difference in time saved later.

Advertise with the Milborne St. Andrew *Reporter*

Distributed to approximately 525 homes 11 times each year

Full page £300.00 p.a. / £55.00 per issue

Half page £195.00 p.a. / £35.00 per issue

Quarter page 105.00 p.a. / 20.00 per issue

Eighth page £70.00 p.a. / £11.00 per issue

Back page £500.00 per annum

Community events at the Milborne St. Andrew Village Hall, half page or less free of charge, other community events in Milborne St. Andrew at half the above rates for half page or less, all subject to availability.

Advertising copy MUST be received by the 14th of the month

msa.reporter@yahoo.co.uk

Your *Reporter* Team

Linda Constant, Pete Constant, Rich Hawker,
Heather V. Hogg, David Payne, Ed Richards, Jo Whitfield,
John and Josie Wright

Advertising: Ed Richards 01258 837907 (07843 018007)

Advertising renewals: Pete Constant 01258 839246 (daytime)

Distribution: Rich Hawker 07393 309037

Editor: David Payne 01258 837700. Assistant Editor: Jo Whitfield

Treasurer and photography: Heather V. Hogg 01258 837392

Copy for the next issue MUST be received by mid-day 14th January

Enquiries and copy to: msa.reporter@yahoo.co.uk

E-copy as .docx or .pub files, pictures as .jpg files please.

Paper copy to any of the team.

The Reporter needs a hand (or two)!

WOULD you be able to help in getting the *Reporter* out every month? Our volunteer-based magazine is delivered, as you know, to every house in the village. Before it comes through your door and thwacks on your mat, it needs to be sorted into the delivery rounds. Our distribution organiser receives the 500 or so magazines from the printer near the end of each month – they arrive in boxes of 100 and need to be shared out into the numbers required for each individual round. When each month's batch has been divided into the sixteen rounds, these are then delivered by the distribution organiser to each volunteer's home in the village ready for them to set about pounding Milborne's streets, pushing them through letterboxes. It's generally a slick operation with the *Reporter* ending up in readers' hands within a day or two of being printed. Rich Hawker's work commitments have changed meaning that it's difficult for him to continue as our distribution organiser, but he will gladly go through the process with anyone interested. It takes around thirty minutes to sort into rounds and under an hour to get them delivered around the village. So, could you fill this key role for our much-valued, free, local magazine, powered entirely by people? Please get in touch with the editor, David Payne, or email msa.reporter@yahoo.co.uk for more details.

The *Reporter* also needs more deliverers, so if you'd like a little bit of exercise once a month, get in touch as above.

Drama in the hall . . .

WITH exactly one month to go (eek!) until we perform our pantomime for you in the Village Hall in February, things on and off stage are, well, pretty relaxed actually. I may be a tad biased, but this year's extravaganza of Mother Goose is stuffed to the brim with gags, song, rhyme, naughty people and fairy glamour. Well, perhaps a bit less of the latter, as you will see: although you might argue otherwise. Our fairy may well be your idea of gorgeousness personified if you've a slightly radical or broad perspective of the term!

Anyway, we are looking forward to delighting a full audience in the Village Hall, rounding off your long post festive January with lots of ooohs, ahhhhs, boos and any other noises you care to make as you bask in the madcap antics of Mother Goose and her menagerie of animals, the awful trio of baddies and the rest of the madcap crew. And make sure you're prepared for our proper 'tough nut' Goose; a hybrid of James Bond and Grant Mitchell. Sort of. With feathers.

See you next month: Thursday 1st, Friday 2nd and Saturday 3rd February.

Kate Hawker

Milborne St. Andrew Gardening Club – our next meeting



OUR club will meet again at the village hall on Thursday 18th January at 7.30pm. Owen Davies will be talking to us about the work and changes to the house and gardens at Athelhampton during the last few years.

All are welcome, so do come along. Entrance is just £2 to non members and includes light refreshments.

Mark Johnson

Front cover picture was taken at the Dewlish firework display.

Eyes down

THE Village Hall was alive with excitement on Saturday, December 2nd, as the community came together for a fantastic Bingo Night organised by the dynamic duo, Amy and Sandie. The event, which drew in 50 enthusiastic adults and children, was a resounding success, leaving attendees with smiles and unforgettable memories.



A special mention goes to the dynamic Roy, the bingo caller extraordinaire, and his glamorous assistant, Giles. Their lively banter and infectious energy added an extra layer of fun to the evening, keeping everyone engaged and entertained throughout the games.

The highlight of the night was undoubtedly the array of amazing prizes generously donated by local businesses. The prizes created an atmosphere of anticipation and excitement, with lucky winners celebrating their victories.

The marvellous village hall bar was in full swing, serving up refreshing beverages and adding to the overall jovial atmosphere. The combination of good company, thrilling games, and the occasional cheer from the bar made for a perfect social setting.

The success of the Bingo Night wouldn't have been possible without the hard work and dedication of organisers Amy and Sandie. Their meticulous planning and attention to detail ensured a seamless and enjoyable event for everyone involved.



As the evening unfolded, laughter echoed through the hall, creating a sense of camaraderie among villagers. It was evident that this Bingo Night had successfully brought the community together for a night of fun and shared joy.

In conclusion, the Bingo Night at the Village Hall on December 2nd was a resounding success, thanks to the team and the generosity of local businesses. The event showcased the strong community spirit within the village and left attendees eagerly anticipating the next gathering.

Linsey O'Neill

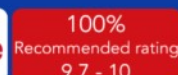


- Local & nationwide removals
- Part load & shared load removals
- Long & Short term storage



Removals & Container Storage

01258 858564
www.pitmansremovals.co.uk



COLIN J. CLOSE FUNERAL SERVICE

*A family run business, serving the local
community of Blandford
and surrounding villages*



www.close-funeral.co.uk



Office and Chapel of Rest
Peel Close, BLANDFORD FORUM, DT11 7JU
email: info@close-funeral.co.uk

Golden Charter
Funeral Plans

Tel.
01258 453133
(24 Hours)

Wednesday Club Christmas Lunch

WE had our Christmas lunch on the first Wednesday of December at The Crown Hotel in Blandford. It was our first foray to this venue, we had a little contretemps with some cold sprouts, but by and large we had a great time. Much chat and Christmas hats with a QR code to scan for treats to claim at The



Crown in January. (John and I both got a bottle of Prosecco!)

It was a very good start to Christmas celebrations.

In January we are having our New Year party in the village hall. It will be bring and share food with plenty of party games, fun and a raffle.

Particular thanks to Jenny Balcon our chairperson and José Thomas our treasurer and all other committee members who have made our 2023 gatherings and outings so enjoyable. *Josie Wright*



Update on items in the December Reporter

1). Mention was made of a fire in the bakehouse of Mr Baker in 1890. Benjamin, "Ben" Baker was the local baker and provisions merchant who lived with his wife Marie in a house called "Benmarie"

where Milton Terrace now stands. The Bakers were staunch Methodists and gave generously to the building fund for the Wesleyan chapel, which opened in 1867. The Baker family are often mentioned in documents

relating to the Chapel. Several members of the Baker family are buried in Milborne Churchyard.

The photograph shows the view looking from the Square to The Royal Oak, with Benmarie in the middle distance and a thatched building on the corner of Milton Road. One of Ben Baker's vehicles is in the photo, as well.



2). Regarding Longmead. The Sacred Dancers mentioned were the Sacred Dance Group of Boulder, Colorado. Founded by Bill and Paula Douthett, they teamed with Pinky and Dennis Ball and four other dancers to form the Community. They were very involved in the Parish, especially during the time of the Reverend Peter Matthews – they left Longmead in c1995. Bill died in 2014, and Paula a year later. Dennis Ball was killed in a tragic car accident while still at Longmead; he and Pinky are buried in Milborne Churchyard.

They did indeed take part in the Service to Commemorate the late Queen's Silver Jubilee in 1977. The photo, taken at the



Service in the Playing Field, shows them dancing. Daisy Cooper is seated at the piano. The "officials" are from left to right. Canon Wilfred Burne, the Methodist Circuit Minister, Canon

Albert "Tubby" Eaton, Reverend John Spruyt, yours truly, and Timothy Spruyt. I was living in London at the time. We held our Service at St. Thomas's, Oakwood N14 (remember that, Andy?) on a Sunday afternoon, and I then caught a train back to Dorset for Milborne's Service on the Bank Holiday Monday.

Mr and Mrs Keith used to farm at Longmead; Mrs Keith was a founding member of Milborne W.I., and she appeared in a photo posted by Josie Wright in a past edition of the *Reporter*. She was great friends with my grandmother, and I have two "Indian Brass" vases Mrs Keith gave to my Gran as a token of their friendship.

Tony Fox

**Let us transform
the quality of
your lawn!**

**From as
little as £15!**



Our specially tailored treatment programme will ensure
your lawn is in excellent condition all year round

Weed Free ■ Lush Green ■ Moss Controlled



FREE Lawn Analysis & No Obligation Quote

Call us NOW on: 01258 839255

FREephone 0808 100 1413 • www.greensleeves-uk.com

P.N. Gray Electrical *Limited*

**AGRICULTURAL - DOMESTIC - INDUSTRIAL -
COMMERCIAL INSTALLATIONS**

ESTABLISHED OVER 60 YEARS!

ALL ELECTRICAL WORK UNDERTAKEN FROM MINOR WORKS TO
INSTALLATIONS.
THIS INCLUDES INSPECTING AND TESTING PROPERTIES, UNDERTAKE
REWIRES AND
ANY GENERAL MAINTENANCE.

PLEASE CONTACT US ON THE PHONE OR EMAIL FOR A FREE QUOTATION
OR SOME FRIENDLY ADVICE:

TEL: 01258-837354

MOB: 07774-838851

EMAIL: pngrayelectrical@btinternet.com

www.pngrayelectrical.co.uk

RELIABLE, AFFORDABLE AND A FAST RESPONSE
ELECTRICAL SERVICE,
IN DORSET AND SURROUNDING COUNTIES.



In need of a Window Cleaner?

Call Darren

for a friendly and reliable service

Clear Vision

Fully insured for complete peace of mind

For that clearer vision just call:

07704 656777

Or email: clearvision312@gmail.com

Domestic and Commercial

Gutters Downpipes Facias Soffits

Conservatories Flash Roofs



***Do you need transport for surgery and other
medical appointments? If so, we can help.***

Milton Abbas NeighbourCar is an established
voluntary transport scheme covering the area
served by Milton Abbas surgery. We can take you
to medical appointments and certain social
events.

**WE ALSO NEED MORE DRIVERS – you can
commit whatever time suits your
circumstances.**

***Ring 01258 470333 to register
or to obtain more information.***

***Local villages covered:
Milborne, Cheselbourne and Dewlish***

The Great Escaper

Friday 19th January 2024 at
7.30pm

Village Hall, The Causeway,
Milborne St. Andrew

Doors and bar open 7.00pm

Tickets cost £6, which includes a
drink or an ice-cream

Based on a true story

IN the summer of 2014, Bernard Jordan (Michael Caine) made global headlines. He had staged a "great escape" from his care home to join fellow war veterans on a beach in Normandy, commemorating their fallen comrades at the D-Day Landings 70th anniversary. It was a story that captured the imagination of the world as Bernie embodied the defiant, "can-do" spirit of a generation that was fast disappearing. But of course, it wasn't the whole story. It was an inspirational but sanitised retelling of one man's need to come to terms with the lasting trauma of war. Bernie's adventure, spanning a mere 48 hours, also marked the culmination of his 60-year marriage to Rene (Glenda Jackson) – *The Great Escaper* celebrates their enduring love but always with an eye to the lessons we might learn from the Greatest Generation.

Reviewers say it's a fabulous film and I for one can't wait as I didn't get to see it when it was released.

Anyone for Bridge

HAPPY New Year to all Bridge enthusiasts.

The MSA Bridge Group is entering our 11th year playing social bridge every Friday afternoon in The Royal Oak in Milborne St. Andrew. There is no charge to join or play in our 'blame-free' environment where everyone, regardless of past experience, is welcome and new players can be provided with instruction if required.

Through the winter we meet at the pub and play from 2.30pm to 4.30pm every Friday afternoon. Anyone interested in trying something new should contact Laurie Benn on 01258 837720 or email laurie@benn.me.uk.

Best wishes for a prosperous 2024.

I look forward to hearing from you.

**Deadline for the next
issue 14th January**

Dorothy Bessie Paul (née Bailey) 1930–2023

DOROTHY was born on the 17th of February 1930 and was one of seven children. She had four brothers, Richard, George, Albert (Pop) and Colin and two sisters, Joan and Laura. Only two of the seven are still alive; her two brothers, Dick, and Colin, survive Dorothy. Dick is now 90, and Colin is 83.

Dorothy's father, Albert, was a farmer and local dealer. He was originally from Dorchester, but the family moved to Milborne St. Andrew during WWII. Albert thought Milborne St. Andrew might be safer than Dorchester. However, the day they moved to Milborne, the Milk Factory was bombed.

Dorothy attended the village school but could not go to school until she had completed her "chores", which included feeding the pigs, amongst other things!

On leaving school, Dorothy did various jobs, including driving Coaches for the local garage.

In 1951, aged 21, Dorothy joined the Women's Auxiliary Airforce known as the WAAFS. She was stationed at Stafford; her title was Leading Airwoman Bailey. Duties were driving and vehicle maintenance. Dorothy recalled how she was always asked to drive the officers, the command "Send Bailey" was often heard. Recently, before her death, Dorothy would fondly recount tales of her time with WAAFs; it was clearly a time she enjoyed and was proud of. She left the WAAF in 1955.

In October 1956, Dorothy married Eric John Paul from Bridport and went on to have two children, Mark and Alison. Eric worked in retail, and in 1960, Eric and Dorothy rented and ran the village shop in Portesham; they ran the shop until 1966 when they moved back to Dorchester.

Dorothy then worked for the local bakers, Buglers, who also had an outside catering company; Dorothy was the head waitress and was very much "in charge".

Dorothy retired in 1990 and moved to Milborne to look after her mother, Laura, until her death in 1993.

Dorothy has always had a passion for gardening and could name and grow any plant she wanted, it seems. Her garden was always beautiful and even in her later years, Dorothy would often be found in her garden. When her dementia made her very anxious, her garden was a great comfort to her; she loved spring and summer and was less keen on winter when she couldn't get outside so much.

In her retirement, Dorothy also volunteered for the village doctors' surgery. She would drive patients to and from appointments as well as deliver medication. She was nominated for recognition by HRH Queen Elizabeth for her work at the surgery, and she attended a garden party with Alison at Buckingham Palace to mark this occasion.

Dorothy continued to live in the bungalow she had shared with her mother up until her hospital admission in July 2023. Her son Mark had come to live with her in recent years, and she was very grateful for his support.

Dorothy had two grandchildren, Rebecca and Nicholas and two great-granddaughters, Chloe and Lucy.

Dorothy remained fiercely independent, and despite various health issues, she carried on driving and carrying out many tasks that should have defied her at her age.

She eventually agreed to have some care at home following breaking her upper arm, and most recently, her dementia meant that she would have needed to have full-time care and a residential placement was sought for her. This was something she would have never wanted, and so, in true Dorothy style, she had the final word, passing away just weeks before she would have moved from the hospital to the residential home.

Thank you Alison Gates and her daughter for the information contained in the piece.



BURROW

Wastewater Treatment Plant Installations for Owners of Septic Tanks

Unsure about the new laws
that affect you?

Call us for a no-nonsense chat so
we can assess if you need a system
upgrade, to stay legal and avoid
pollution.



burrow-environmental.com
01935 507 508

KickBox-FIT GROUP FITNESS CLASSES

Our fun, no contact KickBox-Fit classes will help get you fitter, build confidence,
& reduce stress, whilst teaching you core kickboxing and self defence skills.

With expert black belt instruction and friendly, supportive classes, you'll soon be
on your way to a stronger, fitter, more confident you! All fitness levels welcome.

We offer FREE trial sessions - so simply come along and give it a go. Get ready
to kick, punch, and sweat your way to a healthier, fitter, body and mind.

Ansty
Old Brewery Hall
Tuesdays 7-8pm

Milborne St Andrew
First School
Thursdays 7-8pm

Please call 07742 015 121 for more info
Or visit: www.KickBox-FIT.com

Painting and Decorating

Interior and Exterior

Repairs to Walls / Plaster / Render

Doors / Windows / Skirting / Woodwork

Furniture Painting/ Re Finishing

Fully Insured



Richard Andrews Decor

07736 283397 Milborne St Andrew
richardandrewsdecor@gmail.com

PURBECKAERIALS.COM

**SAME DAY
SERVICE**

**SKY
WIFI**

OAP
DISCOUNT

TV- AERIALS

SATELLITE

FREESAT

Call
Josh

07568456962

01929553705

Family Business

Dorset Roofing & Property Maintenance

New Roofs & Repairs, Flat Roofs, Chimney Work, Pointing
UPVC Fascias & Guttering, Roofs & Guttering Cleaned
Leadwork, Brick Work

All work Guaranteed • Free Estimates & Advice

Tel: 01202 640481 • Mobile: 07810 472347

Yoga for You

Practising yoga for a very short time each day has
amazing benefits.... but you need help deciding
what it's best to do. I teach individually, whether
your prime interest is maintaining your health,
healing, or spiritual development.

For information, ring Sarah Ryan 01258 839230

or email: saryan6630@gmail.com

www.sarahryanyoga.co.uk



live happy!
with
Slimming World

Now at

Puddletown Village Hall, DT2 8RX

On Thursdays at 7.30pm

Call Julie 07871 821928 for more details

for this delicious curry recipe visit
slimmingworld.co.uk
0344 897 8000



touching hearts, changing lives



THE BENEFICE OF PUDDLETOWN, TOLPUDDLE AND
MILBORNE WITH DEWLISH
PART OF THE CHURCH OF ENGLAND IN THE DIOCESE OF SALISBURY



Making the most of our moments

Every morning I receive a short email with a thought for the day from an organisation called Grateful Living. Today's thought, as I write, is this: "The only way we can make the most of our lives is to make the most of our moments." It struck me that this is a very good thought for the beginning of a new year.

It is so easy to get tied up in plans for the future or anxieties about it that we forget to live each moment as if it were precious and valuable.

For some, time flies all too fast; for others, often alone and lonely or suffering in some way, it seems to drag. For those who are too busy, sometimes the need is just to stop and savour the moment, to be grateful for all we have. For those for whom time passes slowly, just take it one step at a time, one moment at a time. Find something enjoyable to do with that moment: be thankful, read a book, watch television, listen to the radio, ring a friend, do some knitting, go outside and so on.

Living in the present moment can make us more contented as we learn to be grateful for what we have.

We can't get back a moment once it's passed. For those who pray there is an additional awareness of God's presence when we learn to live more in the moment. Brother Lawrence wrote a book in the 17th-century, *The Practice of the Presence of God*, in which there is much wisdom about using time well. Lawrence suffered greatly after a war injury and ended up in a monastic setting in the kitchen, a task he did not naturally adjust to. So he found a way of making every moment of his life about God. He started his work acknowledging God's presence, he continued his work in conversation with God and he ended his work aware of God with him. "That his prayer was nothing else but a sense of the presence of God, his soul being at that time insensible to everything but Divine love: and that when the appointed times of prayer were past, he found no difference, because he still continued with God, praising and blessing Him with all his might, so that he passed his life in continual joy." Even though he suffered, he Lawrence was able to appreciate each moment of his life.

When we find our moments either flying too fast or dragging too slowly, a sense that God is with us in them can really help us to value them more deeply.

What better resolution could there be than to appreciate every moment we have as a gift?

With best wishes

Sarah

News from St. Andrew's Church

AS I sit at my computer to write this article it feels strange not being able to comment on the services that are planned to celebrate the coming Christmas season. However, I am sure that there will be lots to write about in the next magazine.

One Christmas event, that we have already run, was our Christmas Fair. It proved to be a very successful event. The weather, although cold, was kind to us and we had a good number of visitors. As usual the raffle raised the most money but all the stalls, including those hired by individual crafters, did remarkably well. Thanks to all who helped and attended.

The not so good news is that unless a new group of willing volunteers offer to organise a Christmas Fair and run it next year, it may be the last one held as a fund-raising event for St. Andrew's church. This is due to the fact that all members of our current Events Committee have decided to step down after more than 10 years of planning and executing social events, which also were designed to bring extra income to our church.

St. Andrew's Parochial Church Council are very grateful to previous members of the

Continued on page 13

Services in the Benefice of Puddletown, Tolpuddle, Milborne with Dewlish

January 2024

7th January – Epiphany

9.30am	Parish Communion	Tolpuddle
9.30	Milborne Praise	Milborne
11.00	Parish Communion	Puddletown Church Room
11.00	BCP Morning Prayer (traditional language)	Dewlish

14th January – Epiphany 2

9.30am	Parish Communion	Milborne
11.00	Puddletown Praise	Puddletown Church Room
11.00	Parish Communion	Dewlish
4.00pm	Bubble Church NEW	Puddletown Village Hall
5.30pm	Sunday Reflections	Tolpuddle

21st January – Epiphany 3

9.30am	Parish Communion	Tolpuddle
9.30	Worship in Stillness	Milborne
11.00	Parish Communion	Puddletown Church Room
11.00	Family Service	Dewlish

28th January – Presentation of Christ

9.30am	Go Fourth	Tolpuddle
9.30	Parish Communion	Milborne
11.00	1662 Morning Prayer (traditional language)	Puddletown Church Room
11.00	Parish Communion	Dewlish

MORNING PRAYERS

Monday – Thursday 8.30am; Saturday. 9.00am

On Zoom, please contact Sarah Hillman

(sarah.c.hillman@outlook.com) for the link

Church Contacts

Vicar Sarah Hillman 01305 848784

E-mail: sarah.c.hillman@outlook.com

Churchwardens

Milborne St. Andrew

Pam Shults 01258 837203

Tony Fox 01258 837651

Dewlish

Jim Burg 01258 837466

Sue Britton 01258 837218

Benefice Office

Emma Hughes

puddletownbenefice@outlook.com

or by telephone on 01305 849039

Parish Council notes

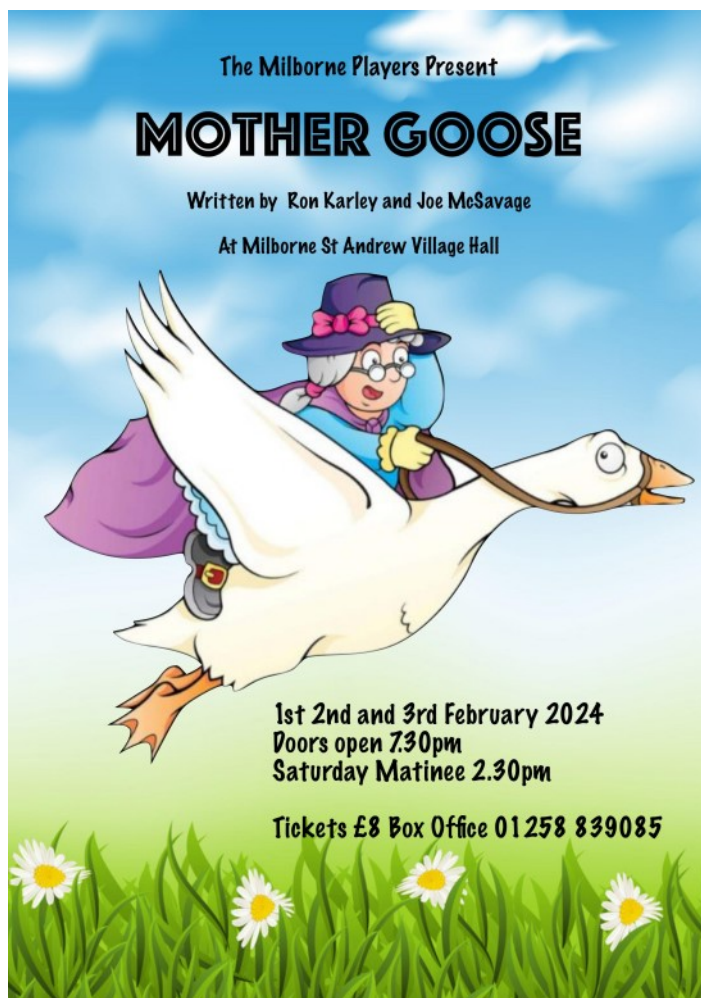
THE Household Support Fund (HSF) will be open for applications for low-income households in the Dorset Council area on Wednesday 3rd January 2024. The support will be in the form of supermarket vouchers. Vouchers will be issued to residents who meet the eligibility criteria within eight weeks. Residents should apply online. Find out all you need to know at www.dorsetcouncil.gov.uk/household-support-fund.

Sandbags are now available for use by the village. They are stored in a shed at the village hall – the shed next to the concrete shed. It was agreed that the shed should not be locked, as it will need to be accessible in an emergency. There will be signage indicating the sandbag store, but it's not there at time of writing. There will be information on what to do with soiled sandbags, as they can't be returned to the store.

Rob Greening (Cllr Greening without his Cllr hat on) presented a proposal for Milborne Spring into Action. He requested £100 to purchase a tool for planting bulbs as well as the cost of daffodil bulbs and fertiliser, which was supported by Parish Council (PC). The bulbs will be planted at the Memorial stone, the Queen's Jubilee tree and at the PC notice board on Milton Road. He hopes that next year he could look at planting bluebells and snowdrops. He will be looking to form a working party, so watch out for further information on how to get involved.

The new village sign has been approved, to replace the one that was stolen on Dewlish Road. It will be placed just down from Parish Pit, on the left coming from Dewlish.

The next meeting will be on Wednesday 3rd January 2024 Milborne St. Andrew Village Hall at 7.00pm. *Jo Whitfield*



Milborne Ladybirds

Learning through play to help children achieve their potential

Located in Milborne First School

Rated **GOOD** again by
Ofsted

"Children enjoy learning"
"Staff are knowledgeable about child development and know when to stand back and let children problem solve"

Opening times
Term time 9.00 –15.00

With friendly knowledgeable staff, we offer a high quality preschool experience for children aged 2 years to school age in Milborne St Andrew and the surrounding area

Minimum attendance 3 hours per day starting at 9am

To find out more:
Call in to see us at the Milborne First School
Phone **07767 450967** during opening hours
Email secretary@milborneladybirds.com

Ofsted registered no.217717

www.milborneladybirds.com

Registered Charity no. 1087441

Join Dorset's 4000 Friends Against Scams

TODAY, just over one in every 100 people living in Dorset are a Friend Against Scams.

Friends learn how to spot the signs of a scam, so can stop themselves from falling for one. Also, because Friends know the signs of a scam, they can also use that learning to help to spot other people who are potentially affected by this type of fraud. By having simple everyday conversations Friends can help to keep others safe, whether family, friends, work colleagues; anyone a Friend might meet.

Friends often encourage other people to become a Friend too, helping to grow the scheme in Dorset. Friends also know where to report a scam and where to go to get help.

It's very easy to become a Friend. Anyone can. Just visit www.friendsagainstscams.org.uk and take the 20-minute online training at a time to suit you. If you don't have a computer, then ask at your local library how to access the training from a public access computer.

If you are part of a group and would like face to face training for a larger number of people, then please contact Trading Standards on the email below.

Some people ask us about opportunities to volunteer with Trading Standards as a Dorset Council Trading Standards Community Volunteer. Volunteers become SCAMchampions who encourage others to become Friends in a more structured way. Examples include attending partnership events with Trading Standards staff, having face to face conversations with people in libraries, getting involved with informal group discussions, and for some who are confident in doing it, then presentations.

We are always happy to hear from people who would like to talk about what they can offer. We are led by you in terms of how much you'd like to be involved. To find out more about our Trading Standards volunteering opportunities, then please get in touch with us at tradingstandards@dorsetcouncil.gov.uk.



Dorset Police introduce metal detecting wands to help tackle knife crime

FRONTLINE police officers will be equipped with metal detecting wands to target knife carriers and seize concealed weapons, as part of a national crackdown on knife crime.

Handheld metal detectors have been distributed to teams across Dorset and will be used to support stop and search powers as part of Operation Sceptre.

Operation Sceptre was a national initiative to tackle knife crime and ran from Monday 13 November to Sunday 19 November 2023.

The wands will not replace the requirement for a physical search but be used as a screening device available to officers already conducting a lawful and justified physical search of a person following their arrest.

View full article here: <https://news.dorset.police.uk/news-article/60cf031d-3f82-ee11-9d5c-6045bdd24049>

Throughout the week of action for Operation Sceptre, all 43 police forces took part in intensified efforts to crack down on knife crime.

Dorset Police provided knife surrender bins at Bournemouth, Poole and Weymouth Police Stations for those wishing to get rid of unwanted knives.

The theme for the week was around online knife retailers and raising awareness of what packages are being sent to young people at home.

Knives can be too easily available online. Dorset Police is encouraging retailers to be aware of who they are selling to and to ensure they are following the appropriate safety guidelines for legal selling and distribution.

The Dorset Police Safer Schools and Communities Teams also delivered education in local schools to raise awareness around the consequences and dangers of carrying a knife. The Force was asking parents and care givers to ask 'what's in the package?' so they know what their young people are receiving through the post.

If you have any information or concerns about someone carrying a knife, please report it to Dorset Police online via the website dorset.police.uk, or CrimeStoppers UK on 0800 555111. Your information could help save a life.

For details of Bournemouth, Poole and Weymouth Police Stations visit: Dorset.Police.UK/PEO

Parents can seek advice about their child's welfare at: Parent Talk – Support for Parents from Action For Children

Retailers can visit this website for guidance on selling knives: nbcc.police.uk/knifeguidance.



No Self Control

By Jan Beaumont ©

Easter is looming and I have been trying
To make folks feel welcome so I've been out buying
Wee chocolate eggs and scorched almonds as well
To have on my table but it sure is hell.

For I cannot bear to just look at them there
And sadly I'm now in a state of despair
For my good intentions have gone up in smoke
And my chocolate consumption is really no joke.

The wee Easter eggs have been vanishing fast
And the days of my diet are now truly past
The almonds have gone so what I've had to do
Is go back to the shop and buy box number two!

The dinky wee eggs in their colourful foil
Just had to be eaten in case they should spoil
So tomorrow, first thing, I'll be right out the door
To return to the shop and stock up on some more!

Unfortunately Easter is still some way off
And who knows – given time – just how many I'll scoff
It seems very clear I cannot trust myself
So tomorrow they're going up high on the shelf.

So far I've resisted, and stuck to my guns
And I haven't yet bought any sweet hot cross buns
But even though I'm full of such good intent
I really don't know where my self-control went!

PRICELESS PROPERTY MAINTENANCE

Do it right, do it once!

- *Painting
- *Decorating
- *Plastering
- *Rendering
- *K Rend
- *Tiling
- *Bathrooms
- *Kitchens
- *Gardening

Email: pricelessplastering@yahoo.co.uk
Phone: 07943626082

LOGON-WOODBURNERS LTD SALES & INSTALLATIONS

20% DISCOUNT

ON STOVES FOR SUMMER INSTALLATIONS FROM MAY TO SEPTEMBER...BEAT THE WINTER RUSH !!!



WOOD AND MULTI FUEL STOVES

CHIMNEY & ROOF REPAIRS

FREE QUOTATIONS & FULLY INSURED

FLEXIBLE FLUE LINERS & RIGID FLUE SYSTEMS

ALL BUILDING WORK UNDERTAKEN

HETAS  

Checkatrade.com

WWW.LOGON-WOODBURNERS.COM

CALL STEVE GUSCOTT
M: 07733 477729 T: 01258 858537

Thinking of selling or letting your property?



Contact us to arrange a valuation.



01258 459600
www.forumsalesandlettings.co.uk
15 Salisbury Street, Blandford Forum, Dorset, DT11 7AU

Greenways Tree Care

and
Garden Services
(fully insured)



Felling
Reductions
Pruning
Stump Grinding
Hedges
Lawn Maintenance
Turfing
Strimming
Garden Fencing
Chippings delivered

Tim Moore

01258 837124




07968 154708

20 years experience
Free estimates and advice
Dewlish, Dorchester

Outward Hounds Pet Care & Walking Services

Companions for your friend. Peace of mind for their people.



-  Your local professional dog walker, 60 minute walks
-  Comfort and Companion visits for Dogs, Cats and Small Animals
-  Pet sitting, tailored Pet Care

Fully Insured - Pet First Aid - DBS - Member of PDWA

PHONE: 07900 207796

EMAIL: outwardhoundspetcare@gmail.com

FACEBOOK: Outward Hounds Pet Care & Walking Services, MSA.

Continued from page 9

Events Committee who have not only worked hard but invested their time and their own money in supplying or making goods that were sold or used at events.

Our Open the Book team, who regularly read and 'perform' Bible stories, suitable for children, were invited to join the school in their annual Christmas lunch. And it was very tasty. Open the Book is a clever selection of Bible stories written for the Bible Society by various authors, including Bob Hartman. These stories are very child friendly and created to 'present the Bible in primary schools in an accessible and enjoyable way' which 'enable the children to engage imaginatively with the text'. If anyone is interested in finding out more or joining our small group of 'performers', please get in touch.

I can only say how much we are looking forward to all the church services which will be held over Christmas and in the last few weeks of 2023.

Tony and Pam Churchwardens

Milborne Praise

ADVENT Sunday saw a good gathering on a cold, damp Sunday morning. One of the hymns certainly gave our lungs a good workout. Perhaps we should advertise "Oxygen available in the Vestry after the Service"? At least those present now know what a "Bum freezer" is!

Our Service on January 7th will celebrate the Feast of the Epiphany. Come along and offer Gold, Frankincense and Myrrh. It has been said that if the Wise Men had been female, they would have asked directions, arrived on time, helped deliver the baby, cleaned the stable, made a casserole, and brought nappies. But, as we sing, "Solemn gifts of mystic meaning" were brought by the Magi. Come, and hear what those gifts signify.

Tony Fox

Dewlish Church Notes

THE VILLAGE Remembrance Day Service was well-attended, by a congregation of all ages. It was good to see so many children, including Scouts and Cubs. John organised the laying of the wreaths, one from the village and one laid by the soldiers of Bovington Camp. Many thanks, John; you did the village proud!

Jim led the service in the church, which was also well-attended. Afterwards, refreshments were served in the Village Hall. Thank you to all who helped by way of providing the refreshments, and washing up afterwards.

Truly a time to be thankful and to remember all those who lost their lives in war.

Our Christmas Bazaar was a great success, raising £525 for church funds. We are most grateful for everyone's support, not just from Dewlish but surrounding villages. People were most generous, and joined in generating a true community spirit – fitting for this time of the year. Many thanks particularly to all those who worked so hard at the stalls, provided refreshments and donated some wonderful gifts.

We wish you all a happy and peaceful New Year – our wish for all the peoples of the world!

Daphne Burg



... from 1897 – A nasty accident on the way to market

Gardens), Crouter (Langton Gardens), and C. Gray (market gardener, Iwerne Minster).

MILBORNE ST. ANDREW

A BROKEN LEG.—Arthur Legg, employed by Mr. Drake, farmer, was taking a waggon load of corn to Blandford market on Monday when his foot caught in a rut in the road and he fell down. One of the wheels passed over his leg and broke it. He was taken to the County Hospital.

WAREHAM

AN ARTILLERYMAN ARRESTED.—Richard Steward, of the Field Artillery, stationed at Dorchester, was on Tuesday arrested

POOR, poor Arthur. Published in the *Western Gazette* in August 1897, this sorry vignette that took place on a Milborne by-way maybe would not have received column inches other than the fact that the chap that broke his leg was named Legg, giving the Gazette staff licence to title it in the way they had. We're glad they did though, as it evokes a picture of late 19th century village life; a farmhand on his way to the big town market with the just-harvested corn in late summer; a rutted road, perhaps making a not so comfortable journey – and definitely this time, a very uncomfortable one. It sounds a very painful accident, a "waggon load of corn" is not something you'd want rolling over your leg.

Milborne St. Andrew Gardening Club – donation to Longmead

IN November, members of the gardening club committee visited Longmead to make a charitable donation on behalf of club members. Longmead is part of The Luccombe Hub, an independent specialist school offering an alternative approach to education for children who find it hard to engage in mainstream schooling. We were given a guided tour of Longmead's facilities and met the dedicated team of staff who were there on the day. The donated money will be used to enhance the sensory garden, one of the facilities offered to children to encourage learning.

Want to know more about The Luccombe Hub? Do you think you'd like to support the work being done at Longmead? Volunteers are always welcome, so visit the website at luccombehub.com to find out more.

Mark Johnson

Looking for Mortgage Advice?



At Eurofinance Mortgage Solutions we are a local, family run business based in the heart of Milborne St Andrew and committed to helping you understand your options.

There are many types of mortgages available on the market - we can help you to find the one that's right for you. With access to different mortgage products, we can help you to find the most suitable mortgage solution personalised to your requirements.

To seek further advice from our qualified mortgage adviser, contact us today!

Call: 07850 538273 or

Email andy@eurofinancemortgages.com

The Village Hall

Milborne St Andrew



TREASURER WANTED

The Treasurer has a particular responsibility for the effective administration of the Hall's finances and will join a team of 10 volunteer trustees who manage the well-being of the Hall and surrounding recreation field, MUGA and Playpark.

As Treasurer you will, in particular:

- Maintain accurate and up-to-date records of income and expenditure and report back to the Hall's Management Committee at regular intervals.
- Deal with day-to-day banking, mainly on-line but also managing cash and cheque deposits from fund-raising activities etc.
- Prepare the Annual Financial Statement for the Charity Commission.
- Prepare an annual budget and advise on future expenditure.

As a trustee and member of the Management Committee we will encourage you to be actively and practically involved in the Hall's management, maintenance and future development.

In return you will be rewarded with the satisfaction of having made a tangible contribution to the well-being of our community and of the people who live within it.

INTERESTED? Find out more at www.milbornestandrew.org.uk/villagehall or contact Linsey at chair.msavh@gmail.com or phone 07798 720812.

Milborne St Andrew Village Hall is an independent charity - number 1176828

WORKING HARD TO MAKE A DIFFERENCE IN OUR COMMUNITY AND BEYOND

Friends of Milborne St Andrew First School
Charity Number 1084154

MAY FAIR

Saturday 25th May
12PM - 4PM

**@ MILBORNE ST ANDREW
FIRST SCHOOL**

- bouncy castles •
- childrens entertainment •
- exhibitors •
- performances •
- stalls •
- fully licensed bar •
- BBQ •

For more information please visit
<https://facebook.com/events/s/friends-of-milborne-first-scho/831436368733557/>



***Enjoy an ICE CREAM or a
DRINK and the MOVIE
for an all-in ticket price of
just £6.00**

Cash / Card accepted

MORE* THAN A MOVIE PRESENTS

**MICHAEL CAINE
GLENDA JACKSON**



Friday 19th January at 7.30pm
Doors and Bar at 7.00pm

The Village Hall - Milborne St Andrew - DT11 0JX

Dorchester Arts Festival: “Anne Boleyn: Wolf at the Door”

ONCE again Dorchester Arts have enabled a creative and enjoyable experience for those of us fortunate enough to be able to attend in the 16th century Dorset manor house of Athelhampton. “Anne Boleyn: Wolf at the Door” was a remarkable collaboration between two musicians both talented and innovative who fleshed out characters from history to a gentle illuminating effect. Not only did Bob Whitley and Lee MacKenzie write and perform the words and music but they made their own costumes. Sarah Shorrocks and her family were also in the audience and found it an entrancing evening enhanced by the “fabulous” atmospheric setting.

We all may believe we know the substance of this tragic story of a young, talented sophisticated woman who kept a sovereign at bay until he married and then murdered her, but this deadly performance, wooing us with sweet sounds and powerful words revealed not only the capricious nature of Henry VIII and his ability to use and abuse others but brought home the terrible plight of his second wife. She held the King at bay whilst he sought an annulment of his marriage to Katherine of Aragon and fretted that at the age of 31 years her childbearing years were being wasted. Five months pregnant at her coronation banquet, Anne went on to give birth to a girl, Elizabeth. The two musicians sang a Lullaby for Elizabeth “You are not a disappointment, though you’re not a boy with your red hair and your laughter you will bring us joy . . . You may be a future leader, who are we to say”. After the miscarriage of a boy she became aware that Henry’s interest was waning and became desperate to conceive and win him back. The sad refrain followed “She Must Not Fail”. “The price of failure will be dear, she must not fail to please or else her race is run” sing the minstrels under the beautiful hammer roof of Athelhampton summoning up the ghosts of its own past. Henry is stung by comments on his inability to father a son and his words are echoed in “Am I Not a Man” “I am a man of great self doubt and fearing of my God”. His eye has already lighted upon Jane Seymour and believes she is the answer to his need for an heir. At this point Thomas Cromwell begins his “Dangerous Game” to rid the King of Anne Boleyn who is already his sworn enemy. So he “keep(s) one eye open in his sleep, prepared to repel the daggers from his back...keep(ing) one step ahead of the pack”. Henry’s disenchantment leads him to “Wolf Hall” the home of the Seymour family to begin his courtship. Of Anne the singers comment “the wolf is scratching humbly at the door. She’ll be swept out like last night’s rushes from the floor”. At the age of 34 years Anne conceives again but miscarries on the day of Katherine of Aragon’s funeral. “Some say that that Katherine’s ghost ripped the child from Anne’s womb”. Cromwell uses his spies amongst Anne’s ladies. The “malicious tongues he hears . . . matter(e’d) little if it’s truth or lies”. Anne pleads for her life holding her daughter in her arms. However Cromwell had held and tortured Mark Smeton, Anne’s musician, who confessed adultery with the Queen. Meek, mild and modest Jane now has

The two musicians Bob Whitley and Lee MacKenzie.



the King in thrall whilst his wife is held in the Tower. He spends time with her whilst Anne’s execution takes place. In the final song Anne says “I have loved you truly, been a loyal wife. Still with hope while I have breath In God’s grace I face my death. I praise my King accept my pain and hope one day our daughter reigns”. This was a rare and moving experience by two extremely talented men.

Carole Fornachon

This performance is coming to the Village Hall on Wednesday

20th March (see page 23).

*If any of you are interested in purchasing their music. Bob Whitley’s email address is: bobwhitleymusic@googlemail.com
His website: bobwhitleymusic.co.uk

The Hammer roof at Athelhampton Manor



Where was the bakehouse fire (in 1890)?

LAST month’s archive newspaper article that told of a devastating fire in a Milborne bakehouse in 1890 drew some discussion on our Facebook page, with a few theories about where Mr Baker the baker’s premises could have been. The Blandford Weekly News’ report of the thatched building which was gutted told of it having slated cottages nearby which helped to stop the fire spreading. Some wondered whether it could have been in a bakehouse behind the village shop whilst others pointed to the cottage called The Old Bakery on Dorchester Hill, a thatched building that adjoins slate roofed cottages. The owner has researched some history of the house and found that it was a long-standing bakery and believes that there was a fire around that time, but the family name was Parsons, not Baker. However, Tony Fox seemed to hit the nail on the head with his suggestion, even providing photographic evidence! See page 5.

New Beginnings for Ladybirds

LADYBIRDS have finally moved into the First School. For those of you who know the First School we are in Mrs Andrew's old classroom.

Having waited so long for the go ahead we had a busy weekend of moving our toys and equipment – thank you to Carly and Luke Perry and others who 'lifted and shifted'; outside work by Gren and Iain clearing the area, building fences and reutilising pallets; Ladybird staff particularly Jess and friends for sorting and cleaning equipment.

At the time of writing this we have only been in school for two weeks, which seems crazy as it feels like we have been there for ever. Much of this is due to the fantastic Head Mrs Cheeseman and her school staff who have been so welcoming and very accommodating.

We are so proud of the Ladybird children who have settled quickly despite a few initial issues where some were expecting to be with their friends, siblings or cousins' classrooms. With the Reception class one side of our outside area there are chats over the fence and peeping into their house window to see if anyone is in there. On the other side is the school playground and many of the older children have popped over to say hello. It's great to have a bigger outside area – flat and no puddle! – where the children can ride their vehicles, stopping to fill up with fuel; mix and create in the kitchen area; play in the house and generally get plenty of exercise.

Inside we have a cosy area for carpet time where the children can look at books, listen to stories and have quiet time when needed to recharge their batteries. Thanks to Liz H for washing the dressing up clothes and arranging the home area – a popular area with all the children. We have tiny toilets accessed directly from our room supporting independence and great for those toilet training. We can also see the wash basins – helpful for keeping an eye on those who like to play with water – hopefully we will have less flood episodes.

And finally I say farewell, this is my last *Reporter* article on behalf of Ladybirds. I thank all my staff, committee and friends of Ladybirds – past and present. There are too many to name, but you know who you are. They say it takes a village to raise a child – this is so true – I have been so lucky to have been part of the Ladybirds family. Now it is time for me to bow out and hand over to a new Leader whom I'm sure will ably move Ladybirds forward.

Liz Dyer

Past endings

Ladybirds' move into a dedicated setting marks a long-awaited milestone. Ladybirds' trustees past and present have been looking to achieve this for at least the last 14 years – and we've now made it! This has only been possible now with the understanding and support of Wessex Multi-Academy Trust, school staff and governors, and my fellow trustees, but above all the drive and determination of the school Head, Mrs Cheeseman. With Liz Dyer retiring our move does indeed represent the end of an era.

Liz Dyer has been the driving force behind Ladybirds since its inception more than twenty years ago. Since co-founding the playgroup she has been prominent in creating a pre-school consistently rated good by Ofsted: our village, and past and present trustees have much to thank her for. We are fortunate that Liz has been prepared to delay her retirement in order to see-in our move to the First School.

Staff are delighted to be free of the daily grind of set-up and

pack-away at the Village Hall although, having been there for some 20 plus years, it does feel a little like leaving home. We thank Village Hall committees present and past for their support over the years and hope their ideas for finding new revenues are realized.

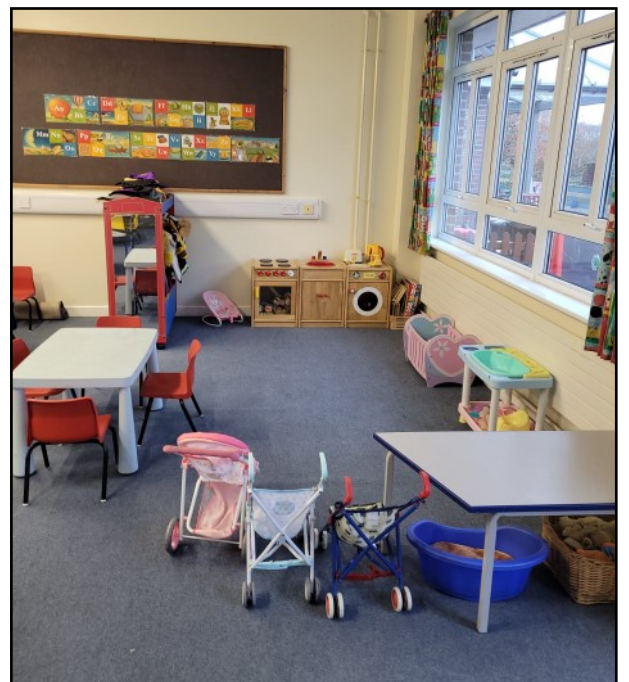
Ladybirds has funded from reserves the alterations we needed to make to the school – mainly the new tiny toilets and wash basins. We will also need to continue to invest in updating equipment and facilities to support development in the school setting.

We hope our move to our own space within the school, continuing under independent governance, will attract more children to attend Ladybirds Pre-School. Both Ladybirds' trustees and school governors believe our co-location will significantly enhance the provision of early-years education for the village and surrounding areas.

New trustees and volunteers will be welcome. Whether or not you have children or grandchildren at Ladybirds, do please get in touch if you'd like to consider helping or steering the next phase of development: paul@milborneladybirds.com.

Paul Tasker – Chair of Ladybirds Trustees







MILBORNE ST. ANDREW FIRST SCHOOL

At Milborne we nurture and celebrate every unique child



SCHOOL NEWS

Christmas message from Mrs Cheeseman

As this year comes towards a close, we would like to share with you wishes from our children for you, our village . . .

From Buttercup Class . . . We wish for people to have a happy time.

From Bluebell Class . . . We wish you all a white Christmas and a Happy New Year.

From Honeysuckle Class . . . We wish everyone a peaceful Christmas time.

We have to congratulate the Ladybirds team on an immense effort from all involved on getting the preschool up to the school site. So much work has gone into laying strong foundations followed by a huge push to prepare the room and ensure a smooth transition for their families. Well done and welcome! We are delighted to have you closer.

There are many people to thank as we cherish so many strong connections throughout our community and appreciate every bit of thought and time that is offered in support of our fabulous village school. Earlier this year, Ofsted judged our school to be a 'good' school. We know that there is always learning to do and we love learning. We also know that our school is a special and happy place to belong. I would like to mention special thanks to Tony Fox, who always makes us feel so welcome at the church, Chris and Sarah Hynes who donated our beautiful Christmas tree, Yvonne Watson, who gives time every week to work with readers in our school and Jo Mullet our Tesco Ambassador who organises food for our Milborne breakfast events where we come together as a community once a half term to share food and a cuppa.

At Milborne St. Andrew First School, we love collecting words; discovering new ones and celebrating wondrous ones we read, hear and write. We love learning about, in and from nature through our developing Harmony Curriculum and we have rediscovered some wondrous words that have fallen out of use that we would like to share with you. **Brumation** – the process of slowing down for winter, conserving energy and curling up cosy. **Apricity** – the feeling of the sun warming your face. **Ammil** – the layer of frost that decorates our landscapes and makes everything glisten at this time of year (from an old Devonshire word for enamel).

From me, I wish that you are able to embrace **brumation**, feel recharged by **apricity** again and again and enjoy the beauty of **ammil** to brighten up your winter months and bring you one of life's free joys.

Merry Christmas to you all Milborne St. Andrew and a huge thank you for your support. As Liz Dyer reminds us as we say farewell and thanks to her as she leaves her role as leader of

Ladybirds 'it takes a village to raise a child'.

We are stronger together.

Warmest regards, Mrs Cheeseman

"Rocking Around The Christmas Tree" . . . Ruby, Evelyn, Holly, Ariya and Brody had lots of fun decorating our school Christmas tree. They did a fab job and it looked absolutely beautiful. Even Tony the turtle and the Christmas elf got involved! Great job everyone.



Father Christmas Came to visit!



A very special thank you to Waitrose in Poundbury for donating us with these wonderful 'Snapper' toys and books. They are adorable and very much appreciated.

CONTACTS

If you require any information about the school, including admission details, or would like to arrange a visit please contact the school office

Head of School: Michelle Cheeseman

School Receptionist/Admin Assistant: Holly Latham-Winning

Chair of Governors: Caleb Brown

FOS Chairman: Kate O'Kelly

e-mail: office@milborne.dorset.sch.uk

website: www.milborne.dorset.sch.uk

Tel: (01258) 837362

Fax: (01258) 837170

Bookends' Good Reads: "A Thousand Splendid Suns" by Khaled Hosseini

FOR their last meeting of 2023 the Bookends' Group met to discuss this totally mesmerising tale of two women from totally disparate backgrounds living under various regimes in Kabul, Afghanistan. Their story covered 45 years and began with Mariam's social ostracism as a "harima" (a bastard) a product of a brief affair between her epileptic mother, Nana and her, then, employer, Jalil. They were living on the fringes of a community visited regularly by Jalil and by Mullah Faizullah. These visits brought joy and a kind of love to Mariam which came to an abrupt end when her mother committed suicide and she was forced into marriage with Rasheed a man 35 years her senior.

Following a 650k journey she arrived in Kabul and several miscarriages later was being beaten and abused by her despotic husband portrayed as a reprehensible villain, patriarchal and tribal. Members of the group were unanimous in finding this a story with incredible emotional impact. The author was felt to be empathetic, able to write from a woman's perspective and to illustrate the two women's intimate and tender journey towards a love which not only connected them but strengthened and contributed towards their mutual survival. Laila, the younger woman was injured in a blast which killed her family and was taken in and married to Rasheed in the hope of begetting a son. Their first child was in fact the product of Laila's relationship with Tariq, a childhood love. The second, the longed for boy, was a breach delivery performed without anaesthetic during a bombardment.

Rasheed's abuse reached appalling levels of cruelty and almost killed Laila. If readers wish to follow up by reading this book I will leave the rest of the story there. The author's portrayal of patriarchal despotism both in and out of the house is a harrowing depiction of enduring the unendurable. The two women were united in the face of this bleak painful existence. For women it seemed that only by the bearing of male children could they tread the path of social status. The group found it a potent mix of the personal and the political which gave profound insights into that beleaguered society dispelling common prejudices. Injustice was the overriding theme: people suffering under an intolerable regime. A bitter sweet tale which painted pictures of beautiful countryside through exquisite penmanship.

The author has a simple, straightforward writing style. His character development is flawless, the plot realistic, the pace and flow of events, the handling of emotions impactful, tragic and beautiful. Readers will find this a contemporary social document, absorbing and shocking. Women in that state are dispossessed of their greatest needs, for whom society offers no protection, no voice. They are totally authentic and believable. Nana's words echo throughout this tale of survival and self-sacrifice, "learn this and learn it well, like a compass needle that points north a man's accusing finger always finds a woman. Always".

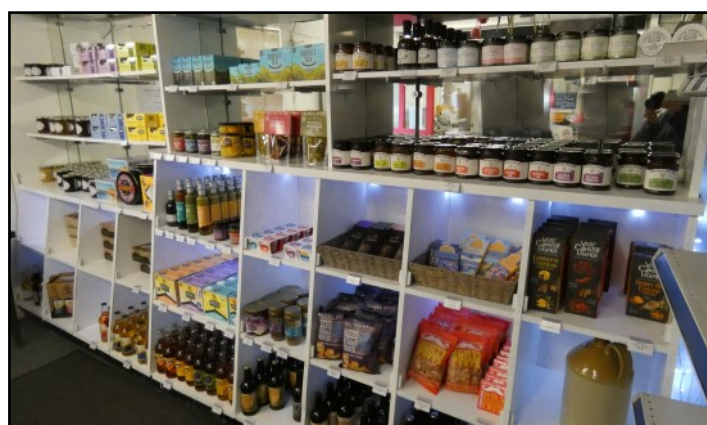
Carole Fornachon

New Old Post Office shop



WE have a new enterprise in our little village, a shop that sells sweets in jars, cards made from photographs taken by the owner, specialist jams, chocolate, beers, wine, cheeses – so many different temptations that are being added to week by week. Why don't you come and look around The Old Post Office?

Josie Wright



Have you something to share?

Send your stories and pictures to
msa.reporter@yahoo.co.uk

The Big Dorset Apple Cake

AS promised, here are the Slimmer's recipes for Dorset Apple Cake.

I've noticed that with most recipes for food pertaining to be lower in calories it is just the same food served in a smaller quantity than normal. So, a cake aims to serve 10 or 12 portions rather than 8.

I think one of the secrets to success when attempting to lose weight is to not go to extremes and set yourself up for failure. You can't survive long term on steamed fish and cabbage or cottage cheese and crisp bread. So, when choosing a regime to follow make sure it's one which is both enjoyable and sustainable over a long period, with a few treats and indulgences.

Some people who take the fast route, the motorway to losing weight, losing several pounds each week, can end up so exhausted at the end of their journey that when they reach their target weight they quickly relapse. Those who take the scenic route and lose weight slowly and gradually, allowing themselves a few treats along the way, still reach their destination. It may be a little later, but they've had a much more pleasant journey and are in great spirits to continue.

Recipe for Weight Watchers Apple Cake

Makes 10 slices, 212 calories per slice, approximately 7 WW points.

Ingredients

2 cooking apples cored and sliced into wedges about 5mm thick
125 g light margarine
3 eggs
75 ml fat free Greek yogurt
100 g golden caster sugar
225 g plain flour
2 tsp baking powder
0.5 tsp salt
2 tbsp demerara sugar
1 tsp cinnamon powder

Method

Preheat the oven to 340°F / 180°C / 150°C Fan. Line and grease a 23 cm cake tin.

Core and slice the apples and set aside.

In a large bowl, whisk together the low fat spread and the caster sugar until it is smooth and pale.

Add the eggs

Sieve the flour, baking powder, and salt into the mix and mix gently until smooth.

Add the yogurt and mix to incorporate.

Scrape the mixture into your prepared cake tin and smooth down the top with a spatula.

Place the apple slices in a spiral on the top of the cake and sprinkle over the demerara sugar and cinnamon.

Bake in the preheated oven for 40–45 minutes until golden brown and a skewer inserted in the middle of the cake comes out clean.

Remove from the oven and leave to cool for 10 minutes before turning out onto a cooling rack.

Slimming World Spicy Apple Cake Makes – 8 portions, approximately 5 Syns per serving

Ingredients

3 medium eating apples
2 tbsp lemon juice, plus zest of 1 unwaxed lemon
3 large eggs, separated
60g caster sugar
110g self-raising flour
2 tsp ground cinnamon
2 level tbsp reduced-sugar apricot jam

Method

Preheat your oven to 180°C/fan 160°C/gas 4. Line an 18cm round springform cake tin with non-stick baking paper. Halve the apples, remove the cores and thinly slice. Put in a bowl along with the lemon juice and zest and toss together. Set aside.

Whisk the egg whites until stiff. Add the sugar and egg yolks and whisk until thick and creamy. Sift in the flour and cinnamon and gently fold in using a large metal spoon, taking care to retain as much air as possible.

Spoon half of the cake mixture into the tin and gently press in half of the apple slices, add the remaining mixture and then the remaining apple, arranging a few slices on the top.

Bake for 45–50 minutes or until golden brown, risen and firm (a skewer inserted into the centre should come out clean). Cool, then release and place on a serving plate.

Mash down the apricot jam using a fork, brush over the top of the cake, cut into 8 portions and serve.

It's just five months now until our village hall hosts "The Big Dorset Apple Cake" event on Saturday 1st June. We are hoping to assemble a huge Dorset Apple Cake from lots of individual home-made cakes made by volunteers in and around our village, and then sell portions of the cake with the proceeds going to the village hall.

If you would like to join in this fun event then please email milborneapplecake@yahoo.com and join our growing list of volunteer bakers and buyers of cake. Even if you can't bake us a cake you can volunteer to buy a portion on the day. Just to remind you that any Dorset Apple Cake recipe is fine, they don't have to be identical as long as they are square in shape,





appropriately 7–8” (18–20cm) in size. Tins are available to borrow. Or sign the list of volunteer bakers at our next Community Cafe at the Village Hall on Saturday 13th January.

Our new webpage on the Village Hall website features all the recipes you have so generously sent in. Please continue to send in all your recipes and also any photos you have taken. The photos of the cakes don't have to be up to the standard of "The Great British Bake Off". One of my favourite TV programmes is "TGBB – an extra slice" where viewers send in photos of their culinary disasters. I've had plenty of those in my time . . .

Someone has promised to let me have a photo of a cake shaped like the county of Dorset, please do send it to our email address: milborneapplecake@yahoo.com.

To complete this month's article, I'm using part of one of my early childhood's favourite poems. I know I've mentioned this before but I really appreciate being able to type into a search engine a very few words of something that is at the very back of my memory and the magic of the internet will somehow seem to read my mind and come up with a long-forgotten poem. In this case I merely typed in the words 'a bear however . . .' and it came up with the A A Milne poem I had half remembered.

On reading the poem, I was instantly transported back to my 1950's bedroom complete with eiderdown and candlewick bedspread on the bed, as well as 4 thick woollen blankets in the winter time. Our only form of heating for the entire house was an open coal fire in the sitting room and another in the dining room. Upstairs was freezing for most of the year, but my bedroom was the only place where I could read in peace without being coerced into household chores by my mother.

We were dressed for the arctic temperature, woollen vest, then fleecy liberty bodice, then petticoat, then long-sleeved blouse finished off with a woollen jumper. I wore either a woollen kilt or pinafore dress with knee length woollen socks, not tights. Never trousers for girls. Strangely enough both boys and girls had bare legs as boys didn't go into long trousers until they were more than 14 years old.

I can't remember anyone at my primary or secondary school being overweight. But this poem addresses being overweight, self-esteem and the way celebrities can influence how we feel about ourselves. The poem is very long, so I'm just using a small part of it. Edward Bear, otherwise known as Winnie the Pooh is,

of course, the tubby bear. In this poem the bear, not yet named, made his debut on 13th February 1924 in an edition of 'Punch' magazine, and was published in "When we were very Young" later that year.

I wonder what happened to my much loved and rather dog-eared copy of the book?

A bear, however hard he tries,
Grows tubby without exercise.
Our Teddy Bear is short and fat,
Which is not to be wondered at;
He gets what exercise he can
By falling off the ottoman,
But generally seems to lack
The energy to clamber back.



Now tubbiness is just the thing
Which gets a fellow wondering;
And Teddy worried lots about
The fact that he was rather stout.
He thought: "If only I were thin!
But how does anyone begin?"
He thought: "It really isn't fair
To grudge one exercise and air."

The poem then describes how he meets the king of France who also happens to be stout (and handsome) and this meeting helps our bear to come to terms with his size and shape. Ending with –

A bear, however hard he tries,
Grows tubby without exercise.
Our Teddy Bear is short and fat,
Which is not to be wondered at.
But do you think it worries him
To know that he is far from slim?
No, just the other way about –
He's proud of being short and stout.

Rose Frost

WOODS FUNERAL SERVICES

Providing a caring service since 1878

Independent Funeral Directors

Memorial Specialist

24 Hour Personal Service

Prepaid Funeral Plans

Pauline J Guy Dip FD MBIFD

Allan Quartermaine Dip FD LMBIFD



Visit us at: 11A Icen Way, Dorchester, Dorset, DT1 1EW
Call us on: 01305 250425 Fax: 01305 250625
Email: enquiries@woodsfuneralservices.co.uk
Website www.woodsfuneralservices.co.uk



***For all your electrical requirements
Domestic, Commercial, Industrial***

**Tel: (01305) 780124 / 470055
E-mail: sales@sf-electrical.co.uk**

www.sf-electrical.co.uk



I J Motors

We are a local, family-run business

Established for over 40 years

Servicing, repairs and MOT work

All makes and models

Air conditioning specialists

Full Diagnostic and Wheel Alignment facilities

Free local collection and return



Contact: Ian and Kelly Joyce
01258 881173 – 07789 724082
ijmotorsdorset@gmail.com
Gorse Hill Unit, DT11 0LH

Milton Abbas Surgery

New Year's Resolutions

Lifestyle change doesn't have to be huge and overwhelming. Sometimes the smallest changes add up to the biggest impact. Why not take it easy this January and ease your way into a healthier you with some simple and achievable bite-sized wellbeing boosts. Download the LiveWell Dorset Small Change calendar, and get ready for 31 days and 31 ways to improve your health and wellbeing: <https://www.livewelldorset.co.uk/articles/small-change-campaign/>

If trying something different, increasing your activity, or joining a group is one of your small changes, why not look at our Wellbeing groups run by our volunteer health champions? Further details can be found on the surgery website.

If you don't have internet or would like a paper copy of either the LiveWell Calendar or our Wellbeing Group activities please contact Kelly, our Social Prescriber at the surgery on 01258 880210 and she will be happy to help you out.

GP Exercise Referral Scheme

The Exercise Referral Scheme is aimed at inactive adults 16 years and over with a long-term health condition such as asthma, arthritis, high blood pressure, diabetes, obesity, depression, anxiety, osteoporosis, and plenty of other conditions, including rehabilitation from Covid-19.

The scheme is designed to help individuals self-manage their condition more effectively and with more confidence. The membership costs less than the usual cost and includes access to the gym, classes, and the pool. For more details, please contact the surgery and ask to speak with Kelly (our Social Prescriber) or send an email to miltonabbassurgery@nhs.net for her attention.

Keeping Warm

As the colder weather arrives, here are a few reminders for keeping warm and safe:

- Dress in layers to keep warm. Several thin layers work better than one thick layer of clothing.
- Use hot water bottles, electric blankets and wheat bags. Do not use both a water bottle and electric blanket at the same time though!
- Heating your home. If you are not very mobile, are 65 or over, or have a health condition heat your home to at least 18°C. Draw curtains at dusk and keep doors closed to block out draughts
- Eat the right foods. Make sure you are eating well, with at least one hot meal a day. Try to eat a balanced diet with lots of fruit and veg to get nutrients.
- Keep as active as possible. This is a great way to keep warm.
- Be prepared if you are heading out. Wear warm footwear with non-slip soles, and keep hands, heads and faces warm.
- Check on older neighbours and relatives. Make sure that they are safe and well, are warm enough (especially at night) and have enough food and medicines so that they do not need to go out during the very cold weather. If you are worried about a relative or elderly neighbour, please contact your local council or call the Age UK helpline on 0800 678 1602.

If you are struggling with heating costs, you may be able to claim financial and practical help with heating your home. Please speak with the Citizens Advice Energy Advice Team by calling 01929 775500 or email energyadvice@cabnet.org.uk.

Understanding Menopause

An Understanding Menopause booklet has been produced with British Menopause Society Accredited Menopause specialists and contains everything we all need to know about Perimenopause and Menopause.

To download your own free copy, please go to www.menopausesupport.co.uk and click on the resources tab. We also have paper copies of the booklet at the surgery in Reception.

New Year's Message to all our patients

May the New Year bring you happiness and peace and be filled with new adventures. Wishing you a joyous 2024 from all of us here at Milton Abbas Surgery!

Artsreach Unveils Spectacular Lineup for our Village Hall in the New Year!

WE are thrilled to announce an array of captivating Artsreach events coming to our village hall in the upcoming year. Thanks to Artsreach, the heart of the arts is beating strong in Dorset, bringing cultural richness to our rural community.

As the school gates close for half-term, on Wednesday 14th February the village hall will transform into a haven of creativity for our little ones. We have a really special event tailored to capture the imaginations of our community's children. Head to the bottom of the sea with Coppice Theatre's "Science Adventures: Deep Sea" for a dramatic aquatic adventure!

With an interactive performance and a hands-on puppet-making workshop, this promises to be a half-term highlight for families.

Then on Wednesday 20th March we have A Musical Evening to Remember when Bob Whitley (guitar/mandola) and Lee MacKenzie (cello) take us back to the 16th Century and the story of the triumph and tragedy of Anne Boleyn, with "Anne Boleyn – Wolf at the Door" (*see also page 15.*)

Anne Boleyn holds King Henry VIII in thrall for six years and supplants Katherine of Aragon as Queen of England, on the promise that she will bear the King a son and royal heir. In a Tudor court of scheming courtiers, religious fervour and feuding families are all fighting for the King's favour in a deadly battle of destinies and dynasties.

Expect a musical tale of love and Tudor tragedy from these Dorset-based performers.

We are truly fortunate to have Artsreach gracing our corner of Dorset. In an era where the arts can sometimes feel distant, Artsreach plays a pivotal role in ensuring that cultural experiences are not confined to urban landscapes. Through their dedication, they bring the magic of the arts to our doorstep, fostering a sense of community and shared appreciation for creativity.

Join us in welcoming Artsreach to our village hall as they continue to enrich our lives through the power of the arts. Stay tuned for further details, ticket information, and get ready to embark on a journey of artistic discovery right here on our doorstep.

JURASSIC

— C O M P U T E R S —



*The incredibly friendly
computer people*

Call Darrell Hounscome or Lee Thompson for
jargon free, patient, friendly computer help
for home and business users.

Whatever your computer problem, call us... we can help!

01305 755668

Repairs • Servicing • Sales • Training • Virus Removal

Email: info@jurassic-computers.co.uk

Web: www.jurassic-computers.co.uk

*Are you ready for a new PC or Laptop? If so, come and see us.
We offer a complete service and will guide you through the whole
process. We can supply, update, set-up and then transfer your
documents/emails from your old system. We will give you the
benefit of our combined 37 years experience gained whilst
working for Kingston Maurward College in Dorchester.*

PROSPECT HOUSE, PEVERELL AVE EAST, POUNDBURY, DORCHESTER DT1 3WE

A Darby

Building Services Ltd



All Types of Building Work Undertaken;
New Builds, Extensions,
Structural Alterations, Kitchen,
Bathrooms

Telephone: 01258 470151

01305 757162

Mobile: 07974 260938

Email: adbsltd@gmail.com



Milborne St. Andrew

Village Website

www.milbornestandrew.org.uk

(search for Milborne St. Andrew)

Information about our village + quick links to:



Village Community



The Reporter (in colour)



Village Hall



Parish Council



Sports Club



First School



Royal Oak



Ladybirds Playgroup

And more . . .

The Village Hall

in Milborne St Andrew DT11 0JX

An attractive and cost-effective venue for your event, easily accessible
and in the heart of Dorset

Now available to hire weekdays and weekends

We offer flexible accommodation configurations inside for
Presentations, Workshops, Celebrations, Exhibitions etc.

(We are licenced for all entertainment and the serving of alcohol)

PLUS extensive facilities outside for
Relaxation, Recreation and Team-Building activities.

SMART AV facilities, WiFi and fast-fibre internet

**Tailored arrangements with our Award-Winning Village Pub
for Lunch and other refreshments**

Further information and availability at:
www.milbornestandrew.org.uk/villagehall

Enquiries to:
msavillagehall@gmail.com
07866 313999



WORKING HARD TO MAKE A DIFFERENCE
IN OUR COMMUNITY AND BEYOND



Hustings Electrical Ltd

New Services - Traditional Values

www.hustingselectrical.com
office@hustingselectrical.com
Office: 01258 837385
Mobile: 07966 403 965 or 07549 380 217
Call or email us with your requirements

Electrical Contractors Since 1980

Agricultural – Commercial – Industrial - Bespoke Panel Building & Controls
Domestic – Equestrian – Intruder - SMS & Programmable Logic Automation
Alarms – Emergency Lighting – Testing - Computer Infrastructure Services
Inspection – Control Systems & Panels - Data Recovery – Firewall Security
CCTV – Data Cabling and Computing - Custom Builds & Repairs
Malware Rescue – Security & Access Control Systems
Website & Web Applications - IP – CCTV

No job too small, Friendly, Reliable & Trustworthy Team.
Call our Office for a Free No Obligation Quote
Watercress Cottage, Tindleton, Dorchester DT2 8QP

The complete garden service from MP Gardening!

OUR SERVICES INCLUDE:

Lawn Cutting & Edging
Garden Clearance
Tree Pruning • Turfing • Hedge Cutting
Hard Landscaping • Paths & Patios
Fencing & Gates • Decking
Pressure Washing



Paul David: **07841 506839**

email: mandpgardening@aol.com

8 The Rings • Milborne St. Andrew • Blandford • DT11 0HY



DORSET FOOT HEALTH CARE

DANIEL BELT SAC DIP RFHP

Mobile Foot Care in the
comfort of your own home

- Nail Cutting (including Diabetics)
- Corns
- Calluses
- Verrucas
- Hard Skin
- Ingrown Nails
- Thick Nails
- Fungal Nails
- Cracked Heels
- Athletes Foot



Book an appointment today

☎ 07917 683569

✉ danbelt@outlook.com



Computer Problems?



BLACKCAP COMPUTING LTD

A friendly personal service.
Ring and have a chat.

Telephone : 01258 881008

Mobile : 07979 853683

Email: steve@blackcap.net



Proud members of

Checkatrade.com
Where reputation matters



Tree & Hedge Services

Covering Dorset

FULLY QUALIFIED
AND INSURED

- All aspects of Tree Work undertaken

- Tree Felling
- Reduction
- Pruning and Stump Grinding
- Hedge Cutting and Garden Clearance
- Decking, Patios & Landscaping

- All types of Garden Fencing

FREE NO OBLIGATION QUOTES

☎ 07760 157087 | 01305 542033

✉ nrptreeandhedgeservices@gmail.com

Philip Trim Contractors

ULTIMATE LIQUID & SLURRY SOLUTIONS

*Do you need your septic tank or water
treatment plant emptied?*

Our range of liquid waste collection and disposal
services for homes and businesses include septic tank
and cesspit emptying, drains and gullies, grease traps,
catchment pits, high pressure jetting and more...!

01929 472192

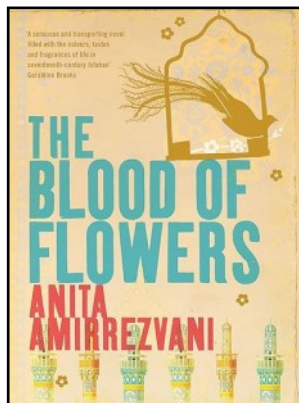
Call our friendly team to find out more about
our competitive services and rates!

www.philiptrimcontractors.com
info@philiptrimcontractors.com

Chamberlaynes Farm Workshop, Bere Regis, Wareham BH20 7LS
UPPER TIER WASTE CARRIER REGISTRATION NO: CDBU125281



Bookends' Good Read: The Blood of Flowers by Anita Amirrezvani



THIS was an amazingly sumptuous read much of which was consumed by our members with great gusto. It was a powerful and haunting evocation of an adolescent girl's struggles in 17th century Iran within a luminous portrait of a fabled city, Isfahan. It was agreed that it had emotional intensity, dazzling set pieces, opulence and squalor, an exercise in contrasts. There was also compelling sex and an irresistible plotline which pulled most of us along. Some felt that the, unnamed, protagonist began as a naïve child and was still one by the end although she had picked up considerable strength and purpose along the way. We all learnt a lot about "knotting", the method of making beautiful Persian carpets, and so called "pleasure marriages". The

latter, known as "sigheh" (pronounced sir-hah) was usually a marriage lasting initially three months which could be renewed if the 'bridegroom' was satisfied with his choice. Money changed hands and there was always the possibility that it could become a permanent contract. If children were conceived then they would be cared for financially for the rest of their lives. In all respects it was licensed prostitution and left a young, often, poverty stricken girl without her virtue or a settled future. There were, however, many other things that were inherently troubling about the story. The sacrificial nature of so many women, their destinies in the hands of others, determined by those others, mostly men.

Many were the comments that things have not changed so much now, referencing the treatment of women in present day Iran after the murder of the young woman for not wearing her headscarf correctly. This is characterised in the line about the main character's mother, "She poured out the cup of her life for me". Meekness and acceptance of fate were valued. Of the knotters, the twisting of their limbs, the enlargement of their heads, the death of the worms and beetles and many flowers despoiled. It is also a transformative tale of both people and craft. The way in which narrative strands were woven, spiced with risk, made for compelling reading. The narrator and her mother were forced to leave their rural village for the city to be taken in by a rich relative when her father died suddenly. Not only did they lose their breadwinner and protector, but the possibility of an arranged marriage. Treated as servants in their "uncle's" house she was tutored by him in rug making. Her skills blossomed and he was constantly bemoaning the fact that she was not a boy. There were many interspersed stories, "fables" which some enjoyed and others found irritating, interrupting the narrative flow. However they gave depth and atmosphere to the story set in the time of the legendary Sha-Abbas. He increased his country's wealth by trading with Europe and imprinted a visual style on his empire. To this end he employed calligraphers, painters, bookbinders and illuminators to produce scripts, designs and paintings for buildings, carpets of silk and gold. Isfahan became a cultural crossroads. Luxury Iranian silk in exchange for gold and silver.

However we all agreed that there was a fine line drawn between "chick-lit" and romance. There were Cinderella elements together with handsome princes and spells. Our rug making child we meet at the age of 15 years and what a sad life she had. She comments "Tenderness had been an emotion for others to enjoy", that young girls like herself were like "princess(es) frozen in a painting . . . a surprise to be unwrapped layer by layer". In the tale men always had to find the answer and pay the money. She could not have survived without help. Customs and practices were fascinating told from her point of view, dressing and ornamenting, feasting and fasting. True to its title it vibrated with colour, perfume and beautiful things. The overwhelming bounty of her "bridegroom's" household compared with ghastly boiled rubbish of bones and onions. The terrible emptiness of so many women's lives even the so called 'privileged' like Maryam in the Sha's harem was illuminating. It is an interesting and arresting study of feminism at a time when it was considered a "golden age".

Interesting also that the Shia religion was known as one of the alleviation of grief and suffering, of empowerment. Knowing this it is clear why the author decided to set her lively tale during this reign.

Carole Fornachon



Unlock Marketing Excellence with Event Sponsorship Opportunities!

Are you a business owner looking to enhance your brand visibility while contributing to a great cause?

Our upcoming May Fair 2024 offers three budget friendly ways to do just this.

Platinum level: a pledge of £250

- Prominent logo placement on all marketing materials (banners, posters, tickets)
- Full-page advertisement in the event programme
- Featured in all social media advertising for the event

Gold level: a pledge of £100

- Half-page ad in the event programme
- Your business name printed on event tickets
- Multiple social media shout-outs

Silver level: a pledge of £50

- Quarter-page ad in the event programme
- A personalised social media shout-out

Why Sponsor Us?

By supporting our event, you not only align your business with a meaningful cause but also enjoy exposure to a diverse and engaged audience.

Make a lasting impact and elevate your brand's presence!

Secure your sponsorship today and help us to create a memorable event.

Find us on Facebook, send an email (msa_fos_chair@outlook.com) or call Natalie on 07740 040548 to discuss this exciting opportunity.

Deadline for the next issue 14th January

Send your articles to the Reporter by e-mail at

msa.reporter@yahoo.co.uk or give to a member of the team.

Team members can be found on page 2.

WESSEX AERIALS LTD

Email: sales@wessexairals.co.uk
 Phone: (01305) 813010
www.wessexairals.co.uk



Televes **cai** **IPAF**

Suppliers and Installers of:
Aerial - Satellite - CCTV

Network points for domestic and commercial situations.

Treat a member of your family.....



To book an appointment, call
 Emma Whittington
 Staddlestones
 Milton Road
 Milborne St Andrew
 Dorset, DT11 0JZ

Tel: 07824 392813
 01258 839171

emmawhittington@btinternet.com

Follow us on 

the DORSET GROOMER 

Queen Thorne LANDSCAPES



RHS CHELSEA SILVER GILT
www.queenthorne.co.uk

Purveyors of the Finest Gardens

01935 850848

Extend your home and maximise your outdoor space

Consultation
 Design
 Construction
 Ground Preparations
 Water Features
 Turfing & Seeding
 Planting
 Renovations
 Wild Flower Meadows
 Lawn Care

As seen on the **BBC**



Chris Perrins Chimney Sweep

Solid fuel stove installer




Flue relining
 Fire place alterations
 Chimney repairs
 Cows fitted

GUILD OF MASTER SWEEPS 

01258 837449
 07824 698109
csweep.co.uk
cfperrins@gmail.com

Parking Problems Persist at the Village Hall

HIRERS of the Village Hall are often unable to park at the Hall because all of the spaces are occupied. Hirers complain that many of the spaces are already filled by the cars and vans of village residents or village visitors who are not actually using the Hall.

A lack of off-street parking around the Village Hall is at the root of the problem. The Causeway is particularly narrow, car and van ownership is high and many domestic garages which could be used are used for storage rather than housing cars.

The Hall car park is private property and is managed and maintained by the Village Hall. It is not a public car park and signs at its entrance make this clear but Trustees have generally been happy to accept other parking on the site at times when the Hall is not in use.

The parking problem is particularly acute in the evening when the Hall is being used by clubs and for other events which attract a lot of people. At this time a number of “illegally parked” cars and vans have already been abandoned overnight by their owners, apparently with little thought for the legitimate users of the Hall.

Trustees explain that many strategies have been tried over the years to manage this problem, none of them particularly successful over time. A recent plan to extend the car park had to be abandoned at the very last minute because of environmental concerns and, other less-constructive approaches, such as locking the entrance, have proved impractical.

Currently, the Village Hall provides local residents with a printed calendar which shows when the Hall will be in use. The calendar is also viewable online. Residents are asked not to use the Village Hall car park at these times but, sadly, a minority choose to ignore the request, even when the additional “No Parking” sign is placed at the entrance! That said, most people do take notice and their cooperation is appreciated.

The Village Hall and its surrounding site was gifted to the village community for the benefit of the community more than 80 years ago. It is an independent charity and is managed by a committee of voluntary trustees. If you would like to help with running the Hall or would like more information about its activities (and difficulties) please see the Hall’s web pages at www.milbornestandrew.org.uk/villagehall or contact one of the current trustees.

Ed Frost

Congratulations

I would like to offer my thanks and congratulations to the entire Ladybirds Team. It has been a pleasure to work together to facilitate this exciting development, the product of years of work long before I had the privilege of being involved. Paul, Liz and the team have been professional and kind throughout what must have been such a busy time for them preparing for this. I am especially pleased that Liz can retire feeling like she helped to set up preschool for a successful future and to wish all involved in the future leadership of the preschool the very best as we help you settle into your new home.

Michelle Cheeseman

What’s on in January

Wednesday 3rd	Wednesday Club New Year Party Village Hall 2.00pm.
Wednesday 3rd	Parish Council Meeting Village Hall 7.00pm everyone welcome.
Wednesday 3rd	Badminton restarts Milborne First School 6.30pm. Newcomers welcome.
Friday 5th	Bridge The Royal Oak 2.30pm.
Thursday 11th	WI Village Hall 7.30pm.
Friday 12th	Bridge The Royal Oak 2.30pm.
Saturday 13th	Community Café Village Hall 10.00am.
Sunday 14th	Mid-day deadline for copy for the January Reporter Send copy, photographs to msa.reporter@yahoo.co.uk or give to a member of the team. Team members can be found on page 2.
Thursday 18th	Gardening Club talk on Athelhampton Gardens by Owen Davies.
Friday 19th	Bridge The Royal Oak 2.30pm.
February	
Thursday 1st	Mother Goose pantomime
Friday 2nd	Village Hall
Saturday 3rd	See pages 3 and 10.

Regular Bookings at the Village Hall

Players Monday 7.00pm weekly.
Line Dancing Tuesday 7.30pm weekly.
Wednesday Club 2.00pm 1st Wednesday monthly.
Yoga Thursday 3.30pm weekly (term time only)
Karate Thursday 5.10pm weekly.
Women’s Institute 7.30pm 2nd Thursday monthly.
Gardening Club 7.30pm 3rd Thursday monthly.
Artsreach Events – look out for the posters.
Check the Village Hall Notice Board for any other events that are one off for you to join in with.

Regular Bookings at the Sports & Social Club

Stitchcraft (kids) Wednesday 4.15–5.15pm and 5.30–6.30pm, Thursday 4.00–5.00pm
Sewcial Crafters (adults) Thursday 1.00–3.00pm and 5.30–7.30pm
Busy Bees Under 5 Group from 9.30–11.30am on Thursday term time only. Contact Claire Tudge on 07970 734162.
Yoga (Mellulah) Thursday (evening): Friday (mornings).
Beavers Friday 5.30–6.45pm.
Football Saturdays and Sundays.
Private parties, birthdays, wedding receptions check online calendar.
Check the Sports & Social online calendar on the village website for any other events you might be able to join in with.

Regular Bookings at the First School

Ladybirds Playgroup Monday–Friday 8.30am.
Pilates Monday 6.30–7.30pm (term time only).
Yoga Tuesday 6.15–7.45pm (term time only).
Badminton Wednesday 6.30–8.00pm (term time only).
Kickboxercise Thursday 7.00–8.00pm.

Winterborne Whitechurch Village Hall January Events

BINGO – 27th January at 6.30pm

CRAFT NATTER – 12th and 26th – 11.00am–1.00pm

KURLING – every Thursday at 10.00am

For hall bookings or to see our full activities calendar, please visit our website www.wvillagehall.com

Selling a car? Can't face the ... ***hassle?***



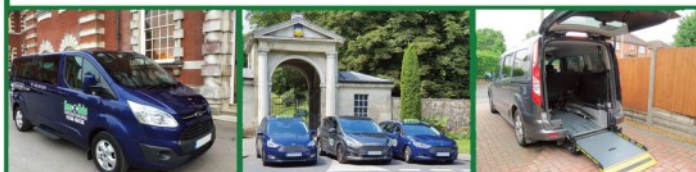
We buy cars, bikes, campers and vans for cash at a time to suit you. Trading in elsewhere? We can usually offer more ... Halcyon Motors, now based in Milborne St. Andrew, is a small, friendly business and we will happily come to you. Impartial advice comes free!

Buying? Visit www.halcyonmotors.co.uk to see "warts and all" descriptions and photos of our current stock. Warranties with all cars. Part exchange welcome. Call Don MacLeod

07782 189555 (Mon - Sun, 8.00am - 9.00pm)

Kens Kabs

TRAVEL SAFELY IN OUR HANDS



Our Services Include

- Airport and Cruise Terminal Transfer Specialists
- 4, 6 and 8 Seater Vehicles Available
- Corporate, Sporting Events
- Female Driver (on request)
- Wedding Guest Transport
- Wheelchair Accessible Vehicle
- School Transport
- Transport for Doctor, Dentist, Hospital Appointments and Shopping Trips

Quote "MR21" to be Entered into our Free Prize Draw



01258 456136

Email: admin@kenskabs.co.uk

www.kenskabs.co.uk

GRASSBY FUNERAL SERVICE

*Still a family run business,
serving the local community since 1861*

Office and Chapel of Rest
8 PRINCES ST,
DORCHESTER

Tel. 01305 262338 (24 Hours)



MEMORIAL MASONRY
Memorial showroom at
9 Princes St, Dorchester

www.grassby-funeral.co.uk

Community Contacts

More information about many community organisations can be found on www.milbornestandrew.org.uk

Please let the *Reporter* know if any of these details change

COMMUNITY CENTRES

Dewlish Village Hall		
Chairman:	Andrew Barnett	07551 839296
Booking Secretary:	Margaret Groves	01258 837617
Milborne St. Andrew Village Hall		
Chairman:	Linsey O'Neill	07798 720812
Booking Secretary:	Susan Poet	07866 313999
MSA Sports & Social Club	Chairman: Richard Lock	01258 837929
	Bookings: Richard Lock	01258 837929

COUNCILS

Dorset Councillor	Emma Parker	07411 149997
Parish Council Dewlish	Clerk: Amanda Crocker	
	dewlish@dorset-aptc.gov.uk	
	Chair: Chris Uden	07973 167117
Parish Council	Clerk: Wayne Lewin	07419 136735
Milborne St. Andrew	Chair: Richard Macnair	07774 081551
	milbornestandrew@dorset-aptc.gov.uk	

Dorset Council Services: For matters relating to roads repairs, bins, litter, environmental health, planning, footpaths and parking, www.dorsetcouncil.gov.uk or call 01305 221000

Flooding: Environment Agency Floodline 03459 881188

Environmental Incident: Environment Agency Hotline 0800 80 70 60

www.gov.uk/government/organisations/environment-agency

South West Highways hello@swhitd.co.uk 01404 821500

Wessex Water Sewerage Floodline 03458 505959

MSA Flood Warden, Non-emergency only: Mark Johnson 01258 839060

GENERAL — ADULT

Moonlight Swing Band	Gillian Pink	01305 260731
M.A. Neighbourcar	Nigel Hodder	01258 470333
Wednesday Social Club	Sheila Burton	01258 839033
Women's Institute	Lesley Clarke	01929 471732

GENERAL — YOUTH

Scouts, Cubs and Beavers	Sam Elliott	07873 762035
Busy Bees	Claire Tudge	07970 734162
Milborne Ladybirds	Sam	07767 450967

POLICE

Police – Non-emergency contact (North Rural team)	101
---	-----

SCHOOL

Milborne First School		
Head of School	Michelle Cheeseman	01258 837362
Chair Governors:	Caleb Brown	
Friends of School Chair:	Kate O'Kelly	

SPECIAL INTEREST

Bridge Group	Laurie Benn	01258 837720
Cribbage	Peter Anthony	01258 837089
Dog Training Behaviour	Natasja Lewis	07896 275357
Food and Wine Club	Steve O'Neill	07490 691121
MSA Allotment Society	Joy Robinson	01258 837661
MSA Gardening Club	Bill Love	01258 837677
Milborne Players	Gren Davis	07876 793319
Village History Group	Pam Shults	01258 837203

SPORT

Hardy Country Bowmen	Mike Healy	01300 342134
Badminton	Bruce Dyer	01258 839117
Circuit training	Grace Martin	01305 213885
Cricket – Dewlish	Elaine Kellaway	01258 837696
Kickboxercise	Jon Dodd	07742 015121
Pilates (school)	Claire Barratt	07703 648869
Football – Milborne Sports	Kelvin Dormer-Woolley	07544 725855
Football – Veterans	Paul David	07841 506839
Skittles – Dewlish	Simon Ross	01258 837606
Tap Dancing for Adults	Kevin Selby	01305 250386
Tennis	Rich Hawker	07393 309037
Yoga (at school)	Sue Chapman	01305 848053
Yoga (at Sports & Social Club)	Saira Francis	01258 880505
Yoga (at Village Hall)	Angela Johnson	01258 839060

HEALTH

Bere Regis Surgery	01929 471268
Milborne St. Andrew Surgery	01258 880210
Milton Abbas Surgery	01258 880210
Puddletown Surgery	01305 848333
NHS for non-emergencies	111
Patient Voice Secretary	Nigel Hodder 07983 013781



Thank YOU

for supporting these and many other community events in 2023 at the

Village Hall

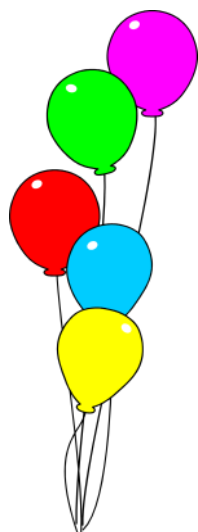
WANT TO GIVE SOMETHING BACK?

Become a Trustee of the hall and help create, plan and run activities and events for everyone in our lovely village to enjoy.

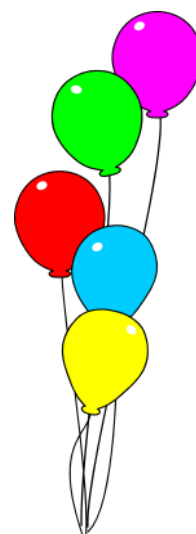


A FAMILY FRIENDLY TRADITIONAL VILLAGE PUB IN MILBORNE ST. ANDREW

January 2024



*Wishing all our customers
a very Happy New Year*



Pie Night Thursday 25th

Dorchester Hill, Milborne St. Andrew, Dorset DT11 0JG
Visit www.theroyaloakmilborne.co.uk
or for enquiries email hello@theroyaloakmilborne.co.uk

TO BOOK CALL
01258 837248